

4.3-10 PREMIUM RF SURGE PROTECTION

TSX Series

The TSX-4310FF and TSX-4310FM are the latest addition to the PolyPhaser TSX family of ultra-low PIM DC short surge protectors. Using patented SX™ filter design combined with a 4.3-10 connector the bidirectional PolyPhaser TSX-4310 delivers to 4G and LTE networks significant advantages in both PIM performance and surge capacity, while occupying 40 percent less space than traditional designs.



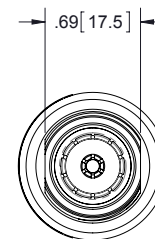
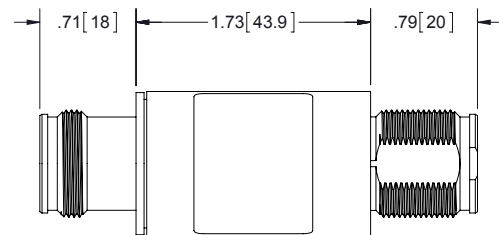
TSX-4310FM

FEATURES

- 40 kA lightning surge rating
- Low let through energy (<300 nJ) for the ultimate protection of equipment
- Ultra low PIM typical -120 dBm
- Ideal for 4G LTE and cell bands from 698 MHz to 2.7 GHz
- Fully weatherized housing
- Multi-strike capability
- Bulkhead mounting
- 4.3-10 connector female-female and female-male

STANDARDS

- IEC 60529 IP67
- RoHS and CE compliant
- Surge performance – IEC 61000 - 4.58/20 μ s waveform



TSX-4310FF

SPECIFICATIONS

Description	TSX-4310FF	TSX-4310FM
Connector	Female / Female	Female / Male
Connector Type	4.3-10 @ 50 Ω	
Frequency Range	698 MHz to 2.7 GHz	
Insertion Loss	\leq 0.1 dB	
Return Loss	$>$ 24 dB	
PIM	$<$ -155 dBc (-112 dBm); 2 x 20 W Input (Typical -120 dBm)	
Power	750 W	
Surge	40 kA (Max) 20 kA (Multiple)	
Throughput Energy	\leq 300 nJ for 3 kA 8/20 μ s Waveform	
Let Through Voltage	\leq 5 V for 3 kA 8/20 μ s Waveform	