

Dragon cut software direction for use

1.Installing Dragon Cut and Extras

install Dragon Cut with the Program DVD and Product Serial Number (PSN)

Install Dragon Cut

1.Insert the Dragon Cut DVD into your computer's DVD drive and wait for it to Auto-run.

If it fails to initiate, click on the Start button and go to Computer/My Computer and select the DVD drive with the Dragon Cut DVD and double-click on it to initiate Auto-run or right-click on the DVD icon and click Open/Explore and then click on Install_Dragon Cut.

2. Follow the Installation Instructions and click Next as required and Dragon Cut will be installed onto your computer;

If required, you can install Dragon Cut to another drive on your system. However, and to avoid potential problems we recommend you install Dragon Cut onto C:\ Drive or the same drive that you have Windows installed on.

2.Licensing & Product Activation

Open the Gateway and click License to activate Dragon Cut using the Internet

1.Click on the Help menu in Dragon Cut and then Activate Product.

2.Follow the instructions in the window that opens.

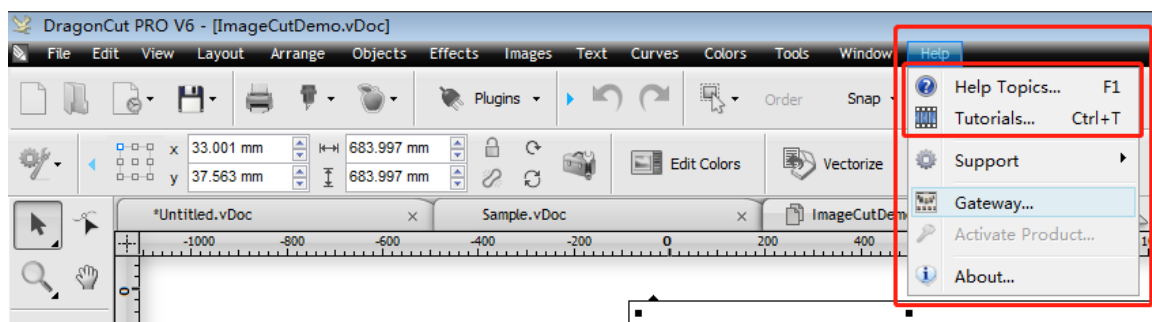
3.Close Dragon Cut and when the software is reopened it will be activated and ready to output.

3.Learning Resources

Dragon Cut comes with a suite of specialist help tools and features to greatly assist you in learning where to find and how to use all Dragon Cut tools and features, as follows:

Built-in Manual : A complete user-guide (manual) of Dragon Cut i.e. the manual that you are reading at the moment.

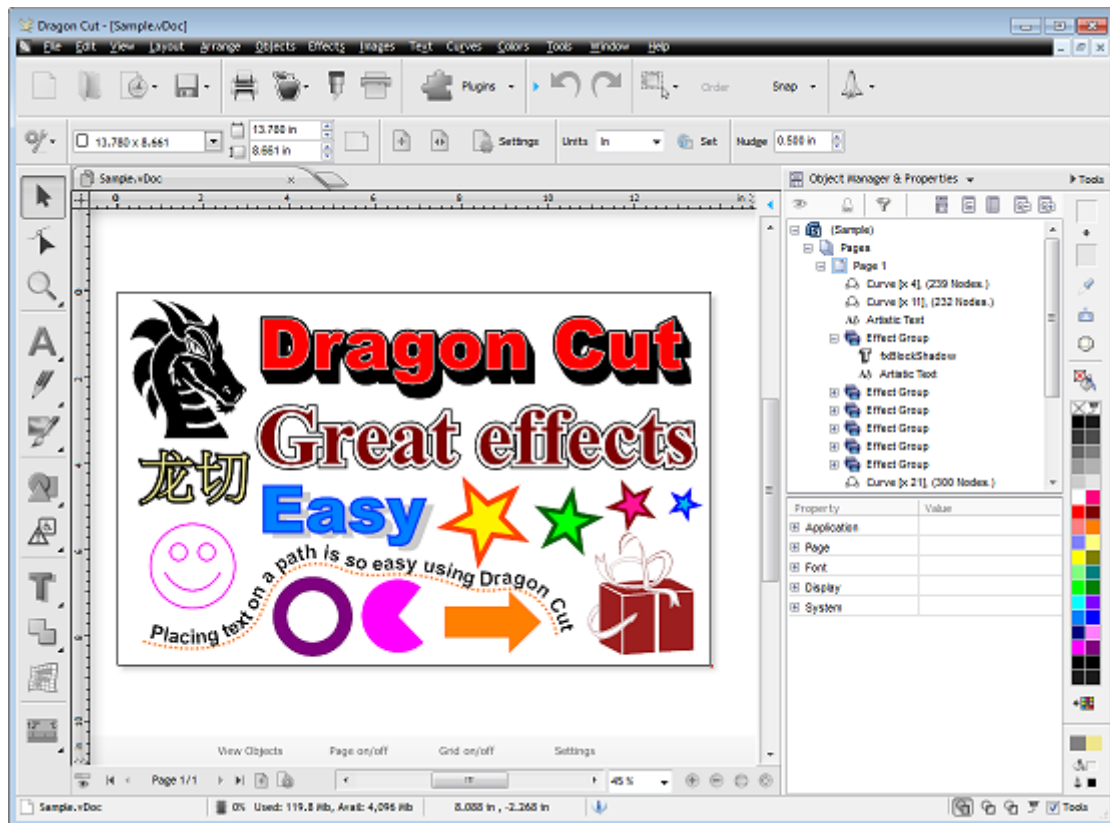
Lessons and Tutorials :A suite of videos that discuss in detail how to do a wide range of tasks in the program. These lessons are available Online (requires an Internet connection)



4.The Dragon Cut Workspace

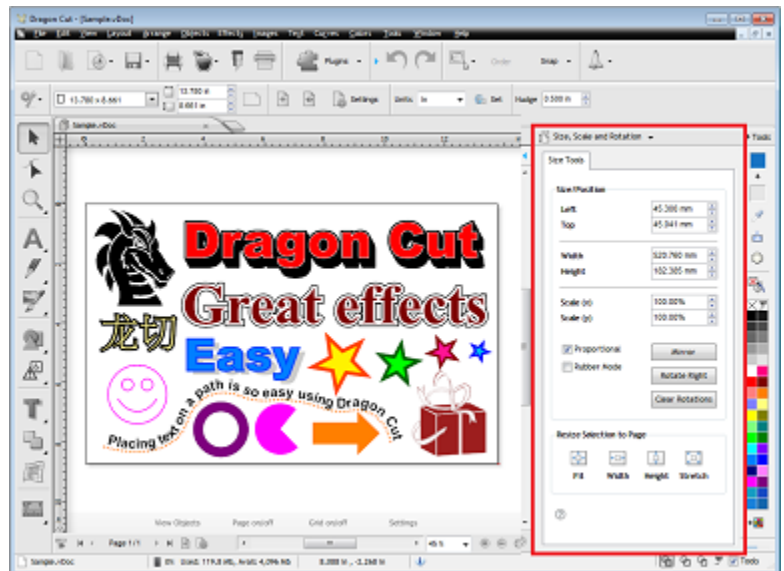
Workspace & Settings

- The Dragon Cut - Application Window
- When you open Dragon Cut or a Document, the application window opens containing a Drawing area, a DesignCenter, Page Thumbnails and a suite of Dynamic Tools.



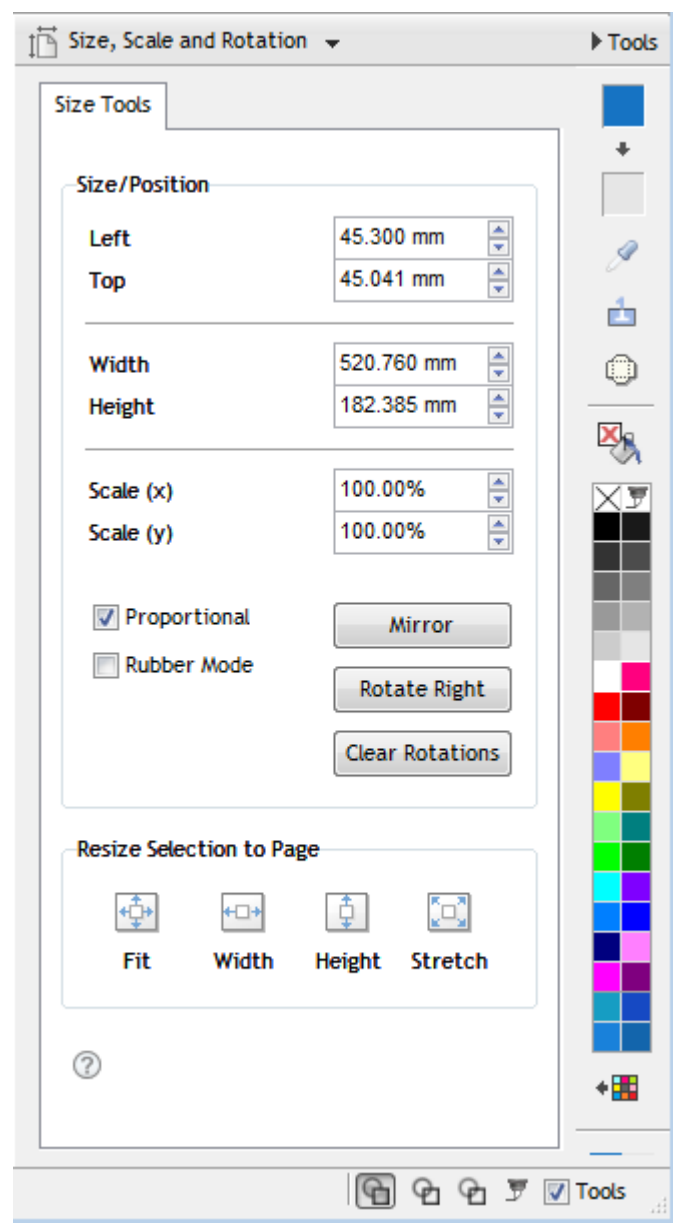
- The Dragon Cut DesignCenter™

The DesignCenter is a central repository of all the major tools and features of the program which can be selected and displayed from a drop down list. The DesignCenter also accesses the Object

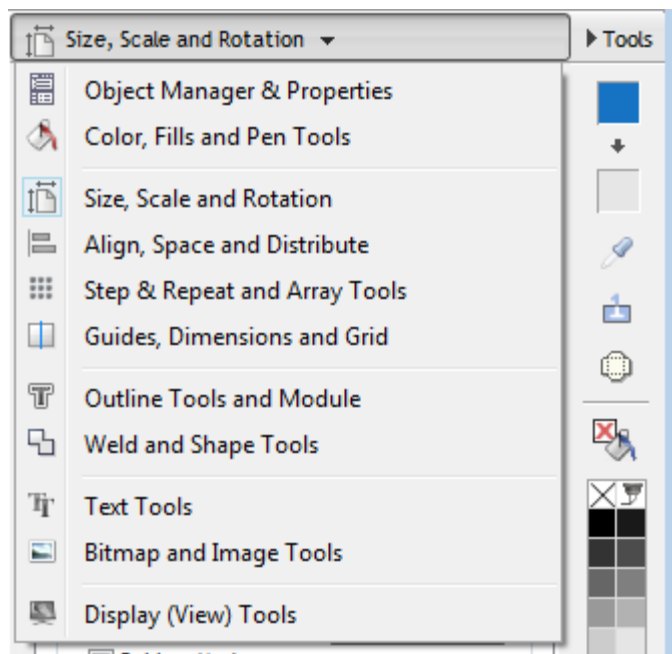


Manager, and Property Inspector.

Location of the DesignCenter



The Dragon Cut DesignCenter™



To access the DesignCenter click on **Tools** (also shown above) and the DesignCenter will pop-out. To select a specific category of tools click on the dropdown list (as shown above) and click on the category of interest.

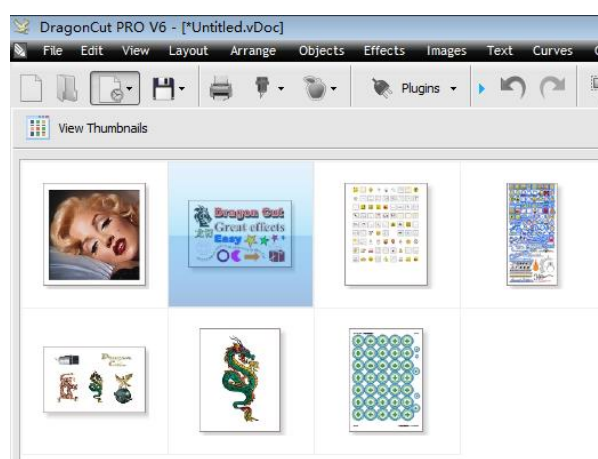
Note: The example used above is Dragon Cut Pro.

Dragon Cut Documents, Worksheets and Pages

Dragon Cut works with multiple-page documents and each page can be the same or a different size. There is no limit on the number of pages any one document can have* plus the program comes with a comprehensive suite of useful page tools and controls.

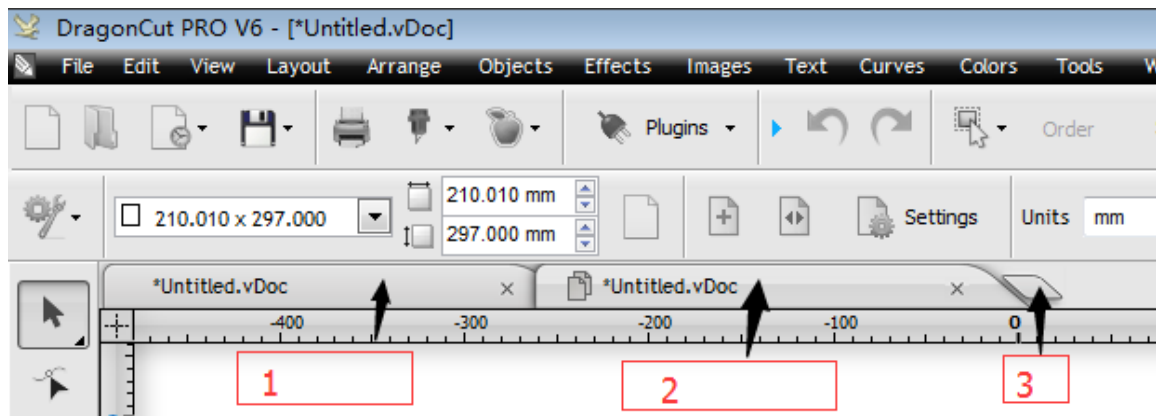
- Opening, Saving and Working with Documents

Open Recent Document



Document Tabs

Dragon Cut has document tabs for easier navigation between multiple and different types of documents, as follows:



File Formats

Dragon Cut opens and saves in the following native file formats:

Dragon Cut Document (.vDoc)

Includes all the elements of a Document (Objects, Text, Images, Curves, Symbols, Pages etc.)

Dragon Cut Backup Document (.~vDoc)

The Document as it was the moment before it was last saved (Includes all the elements of a Document)



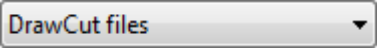





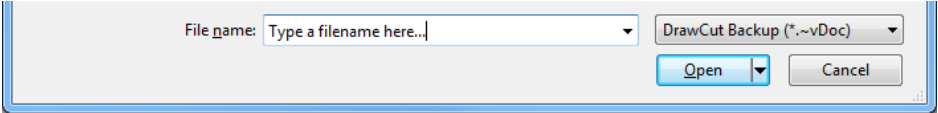

Vector Cutfile (.vCut)

Includes vector cutfiles for Cut Documents within Dragon Cut

Vector Logo File (.vLogo)

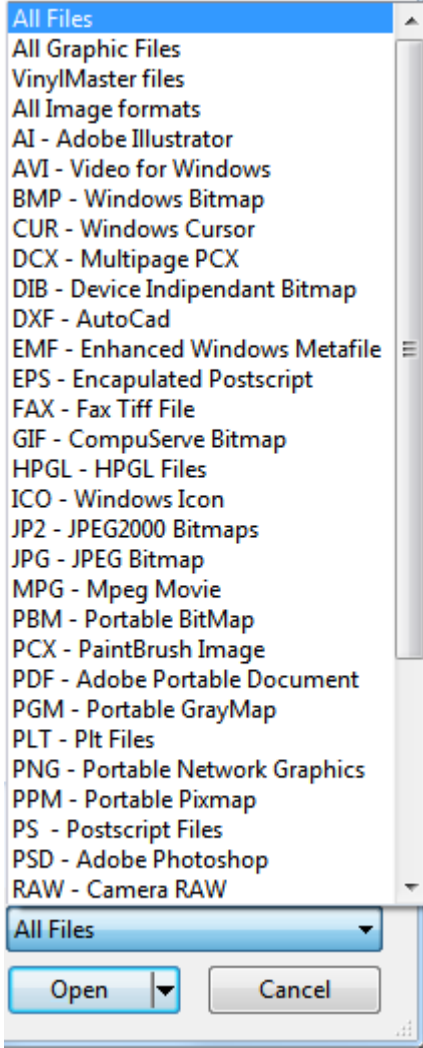
Includes Objects and Text but no page information

Working with the Documents

To	Do the following	Shortcut Keys
Open a Document	1. Click on Open  or click on the File menu → Open and the Select File to Open window will open as shown above;	Ctrl+O
	2. Navigate to where the File you wish to open is located, select the file and click Open.	
	 You can filter the types of files displayed in the Open window by selecting the format in Files of Type dropdown 	
	 If you don't see a thumbnail preview of your Document files press F5 until the thumbnails appear (as shown at top).	F5
Open a Recent Document	1. Click on Open Recent  or click on the File menu → Open Recent and the Thumbnail Selector will open as shown at top;	
	2. Click on the File you wish to open.	
	 As you navigate through the files you will see a larger thumbnail on the right side with file information.	
Open Backup	1. Go to the File menu → Backups → Open Backup  and the Select Backup File to Load window similar to the window as shown above;	
	2. Navigate to where the Backup File you wish to open is located, select the file and click Open;	
	 Backup files are saved as .~vDoc 	
Save a Document	1. With a Document open, click on Save  or on the File menu → Save and the Save File As window will open;	Ctrl+S
	2. Navigate to where you wish to save the file on your computer;	
	3. Type in a name for the File under File name (as shown directly above) and click on Save.	
Save As	1. With a previously saved Document open, go to the File menu → Save As and the Save File As window will open;	
	2. Navigate to where you wish to save the file on your computer;	
	3. Type in a name for the File under File name (as shown directly above) and click on Save.	

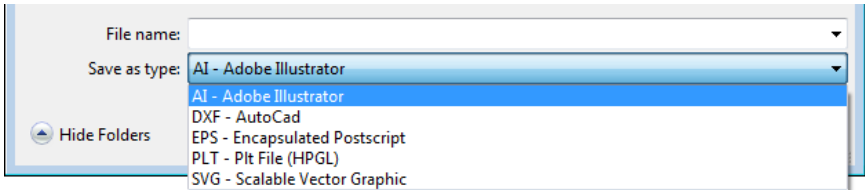
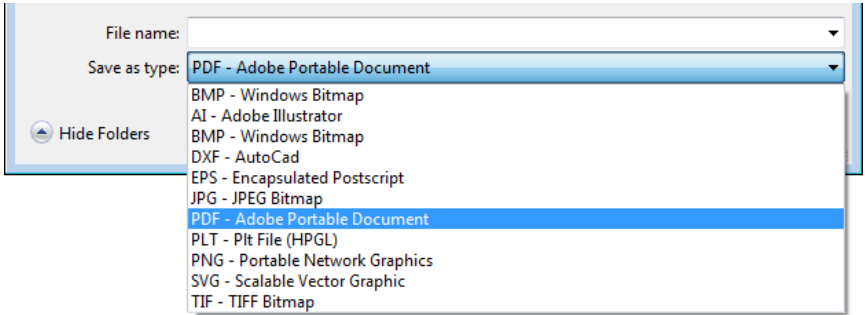
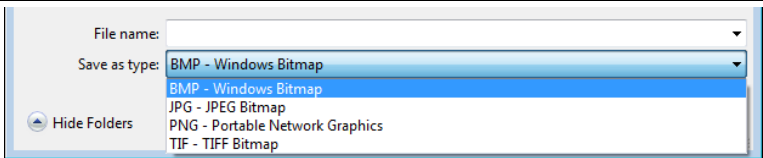
- Importing Files

How to Import Files

To	Do the following
Import any File Format	Click File menu → Import and the Import window will open (as shown above);
	Navigate to where the File is located and click on the required File to highlight it, then click on the Import button. The Import Window will then disappear and a Paste cursor will appear;
	Place the Paste cursor and click once to paste the File, or click and hold down the mouse button and drag out the required size of the imported File (object) into the document.
Select File Type	 <p>Click the Files of Type dropdown/up to Select the type of file you wish to import (as shown directly above).</p>

- Exporting Files

How to Export Vector and Raster Files

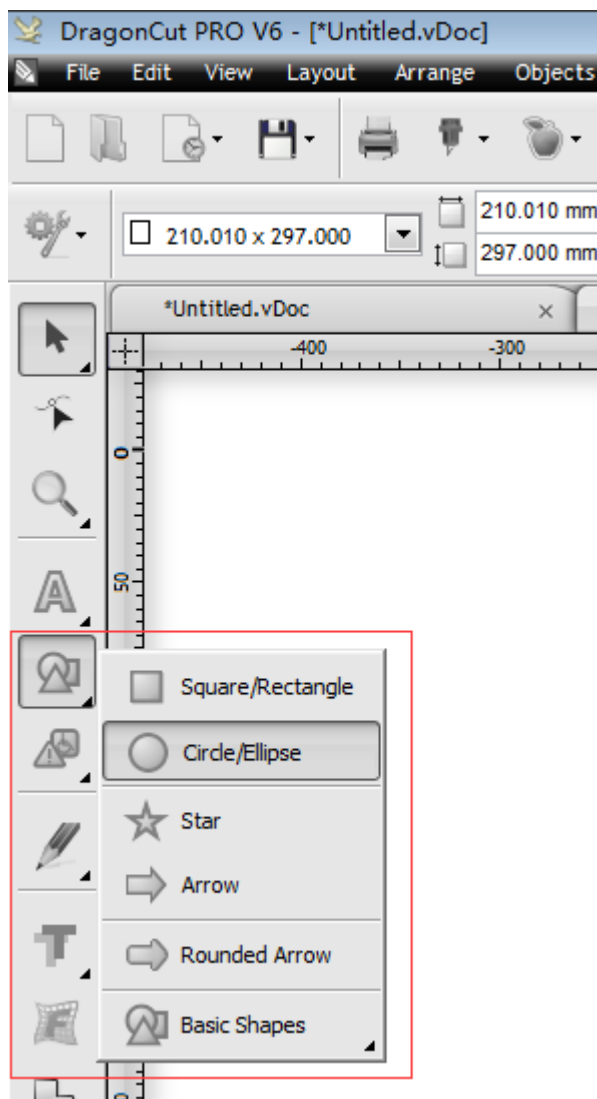
To	Do the following
Export Vector Files (.ai .dxf .eps .plt .svg)	Select the Object(s) you wish to Export. Note: selecting an object is required;
	Click the File menu → Export → as Vector... and the Export window will open (as shown at top);
	Navigate to the Folder where you wish to save the File;
	
	Select the File Format that you wish to save the selected object(s) in, from the Save as type drop down (as shown directly above);
Export PDF	Type a File Name in the File name list box;
	Click Save and the file will be exported.
	Select the Object(s) you wish to Export. Note: selecting an object is required;
	Click the File menu → Export → File... and the Export window will open (as shown at top);
	Navigate to the Folder where you wish to save the File;
	
	Select PDF - Adobe Portable Document from the Save as type drop down (as shown directly above);
	Type a File Name in the File name list box;
	Click Save and the file will be exported.
Export Raster (Image) Files (.bmp .jpg .png .tif)	Select the Object(s) you wish to Export. Note: selecting an object is required;
	Click the File menu → Export → as Image... and the Export window will open (as shown at top);
	Navigate to the Folder where you wish to save the File;
	
	Select the File Format that you wish to save the selected object(s) in, from the Save as type drop down (as shown directly above);
	Type a File Name in the File name list box;
	Click Save and the Export Image module will open. Because each file format has different options each is explained in-turn as follows:

Power Shapes and Basic Shapes

Dragon Cut comes with Power Shapes that come with interactive nodes which alter the shape and position of the Power Shape. Basic shapes are simple curve objects that are provided for your convenience. These shapes can be filled, have a pen style and have their nodes edited the same as any other curve object.

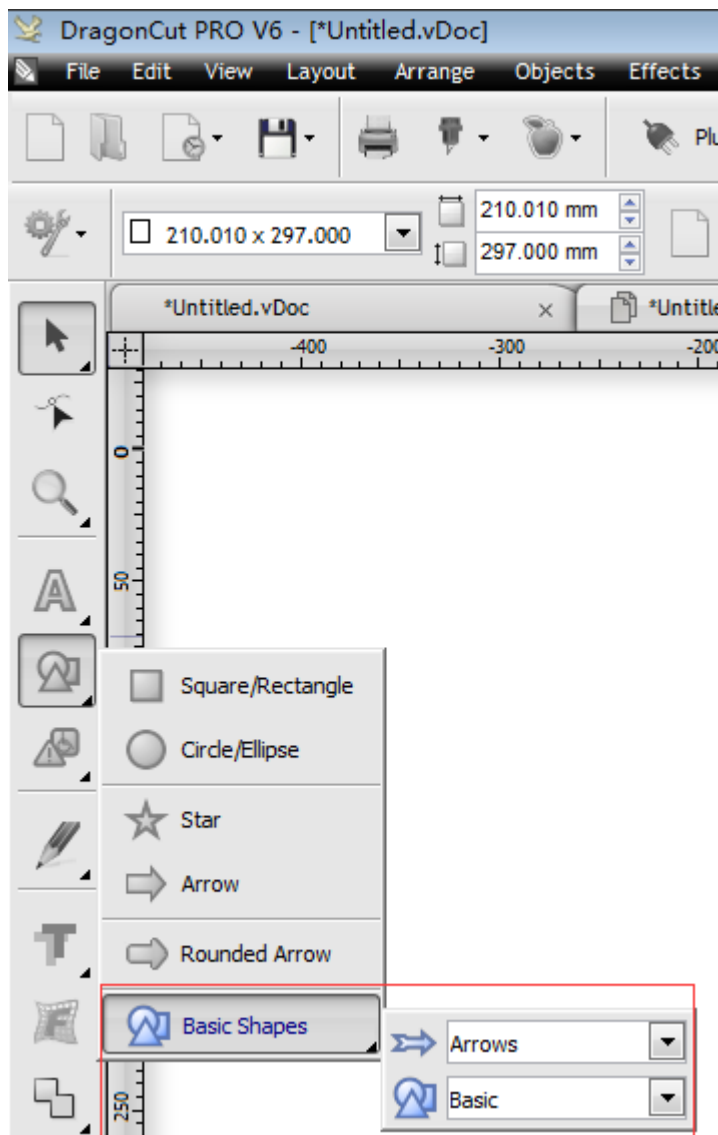
Working with Power Shapes

- Arrow
- Star
- Square
- Circle/Ellipse

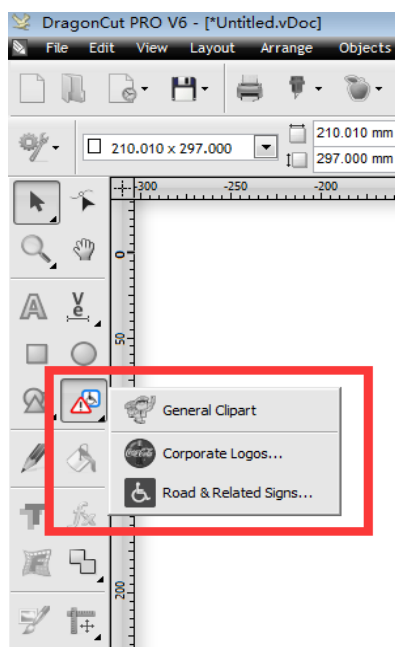


Basic shapes are simple curve objects that are provided for your convenience. These shapes can be filled, have a pen style and have their nodes edited the same as any other curve object.

- Basic Shapes



- General Clipart, Corporate Logos ,Road and Related Signs

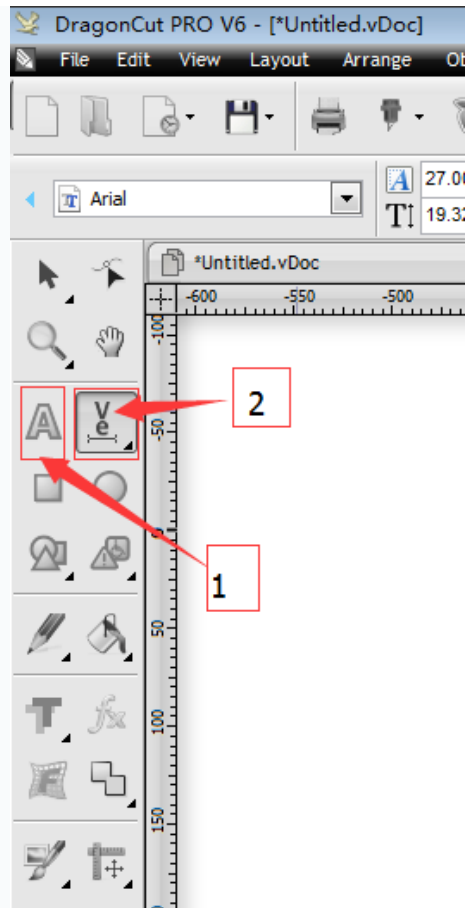


All the above are the simple explanation of the tools .

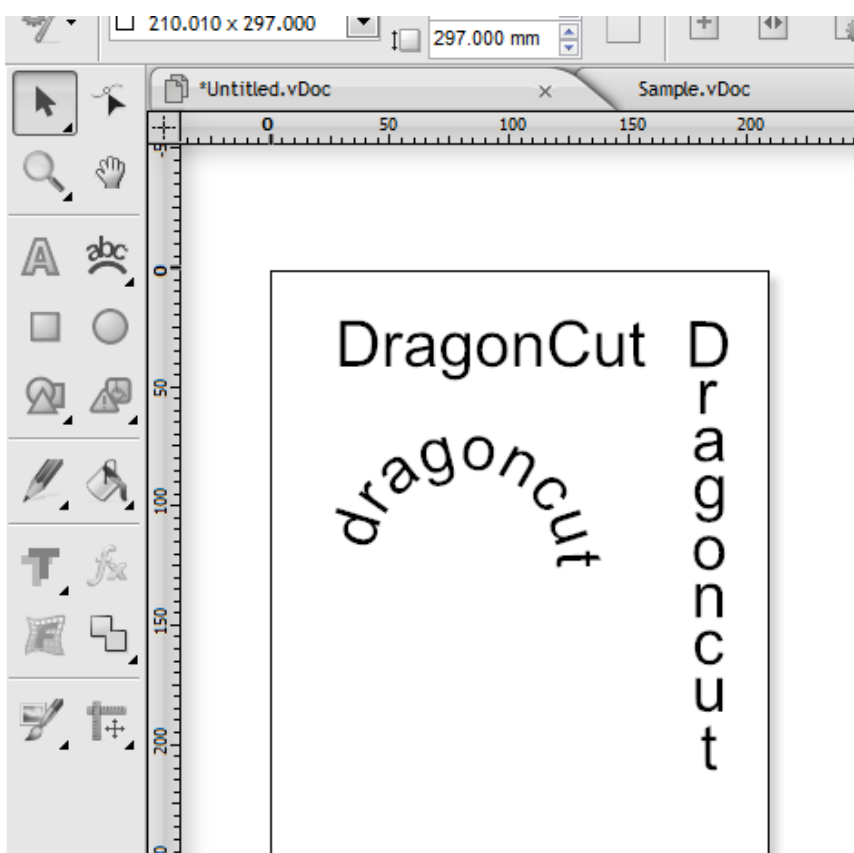
Example use

➤ Words --- just for cutter

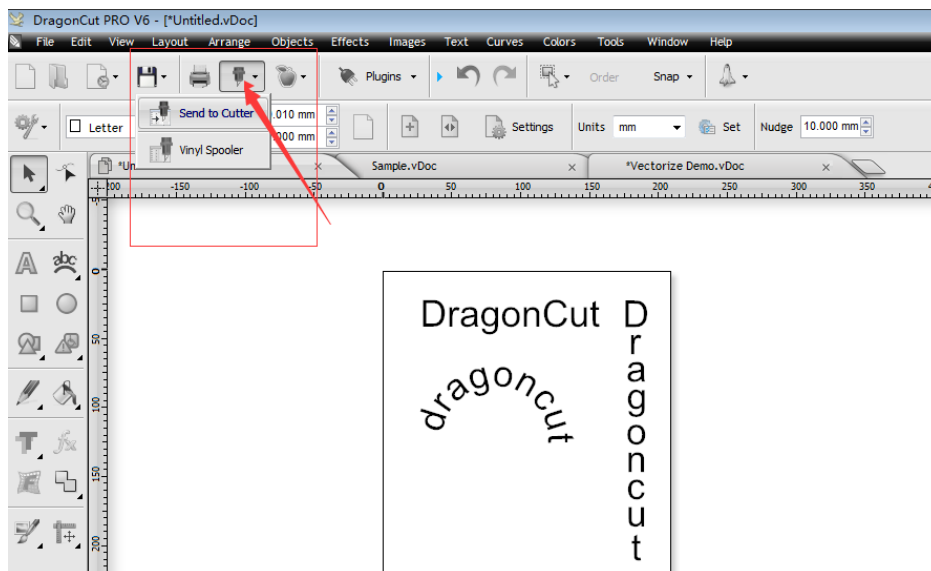
1、 Create file

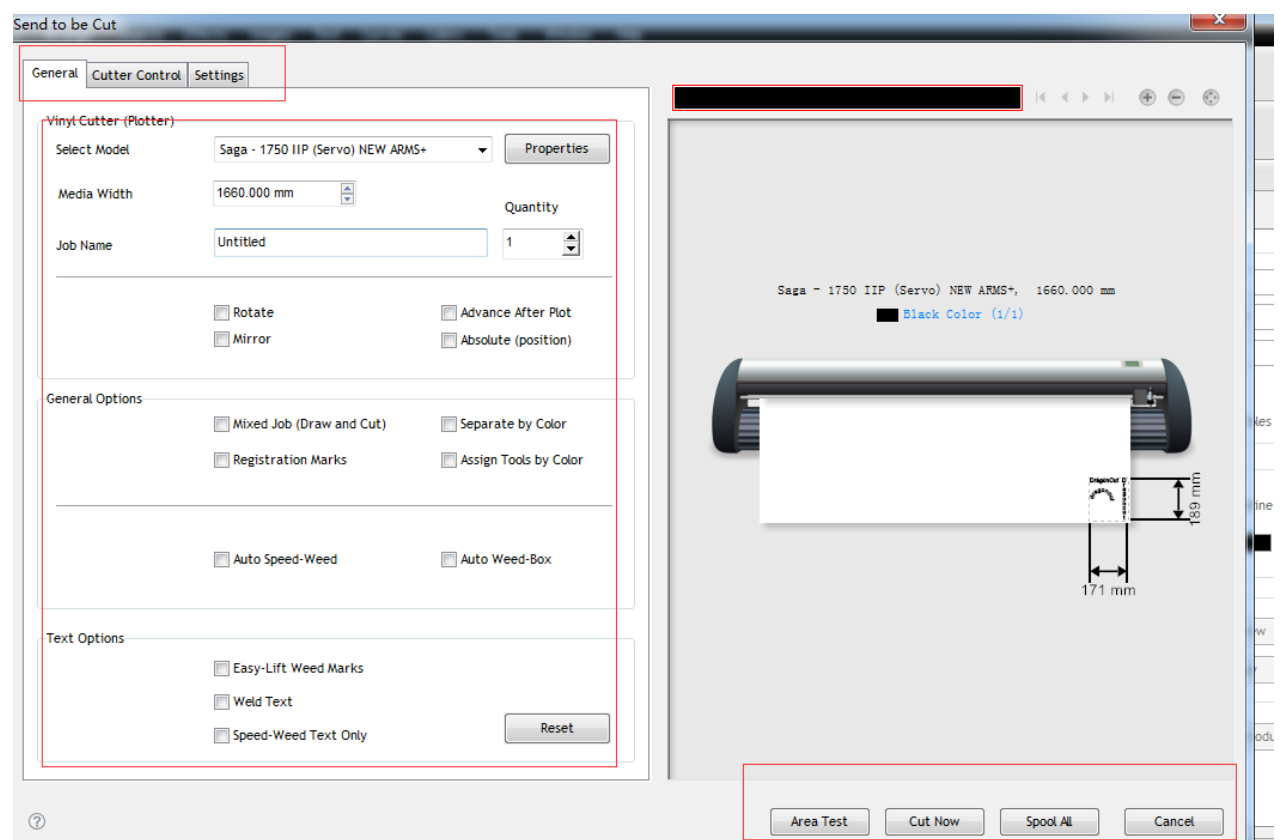


1 the general words , 2 the WordArt-text



2、 send to cutter

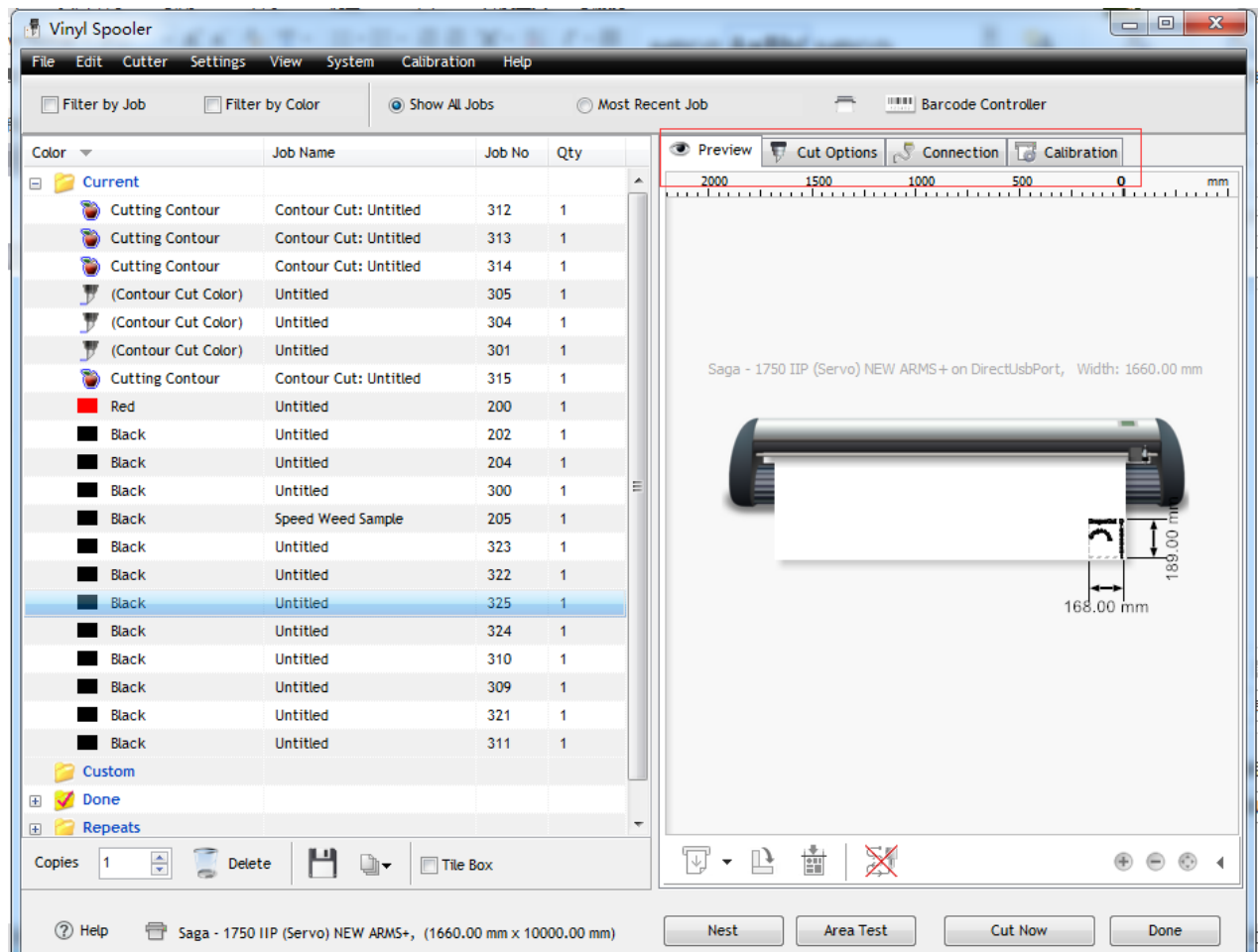




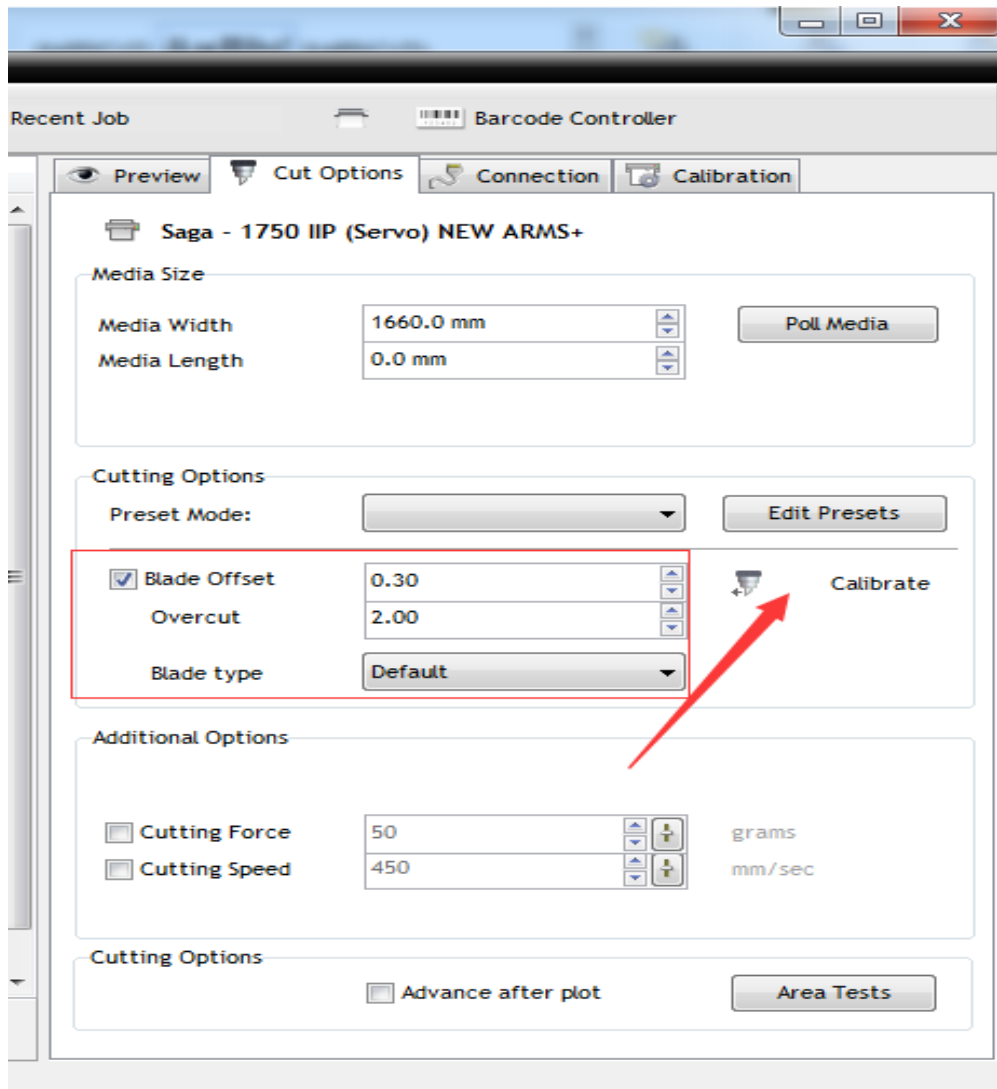
like the above picture , adjustment the parameter of the software ,then chose “Cut Now” ,or “Spool All” .

3、 Then the cutter will start to work

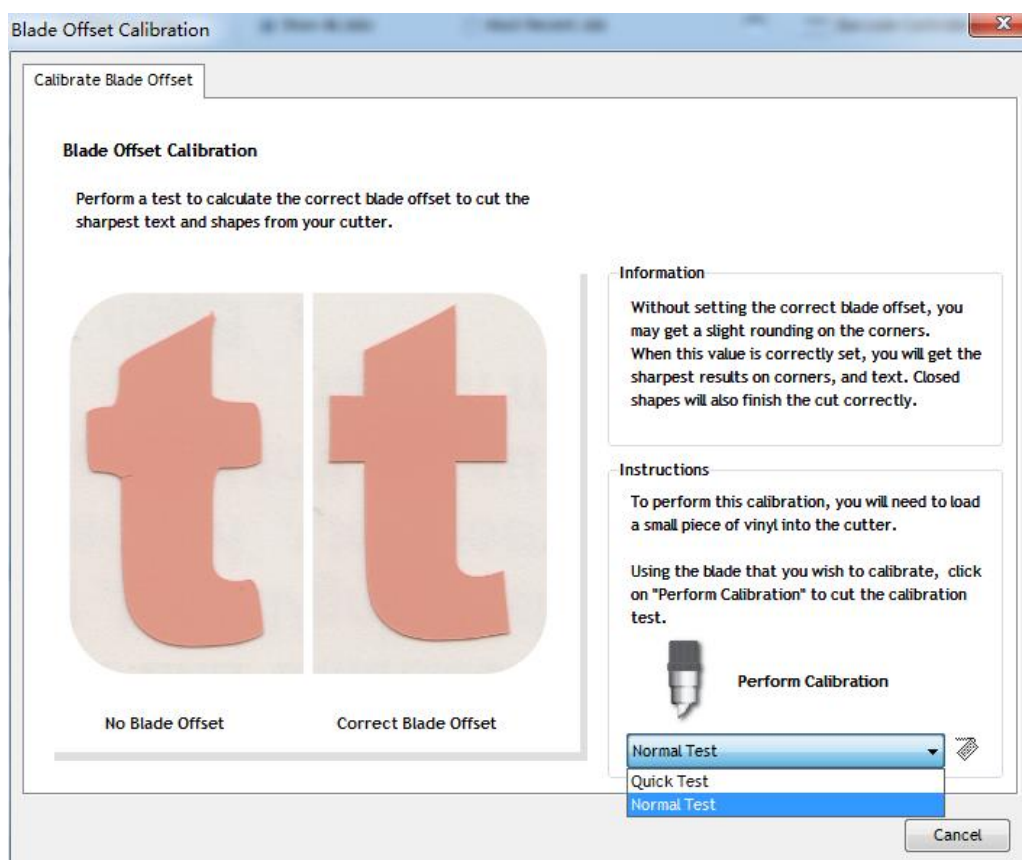
Before cut ,we need set some option



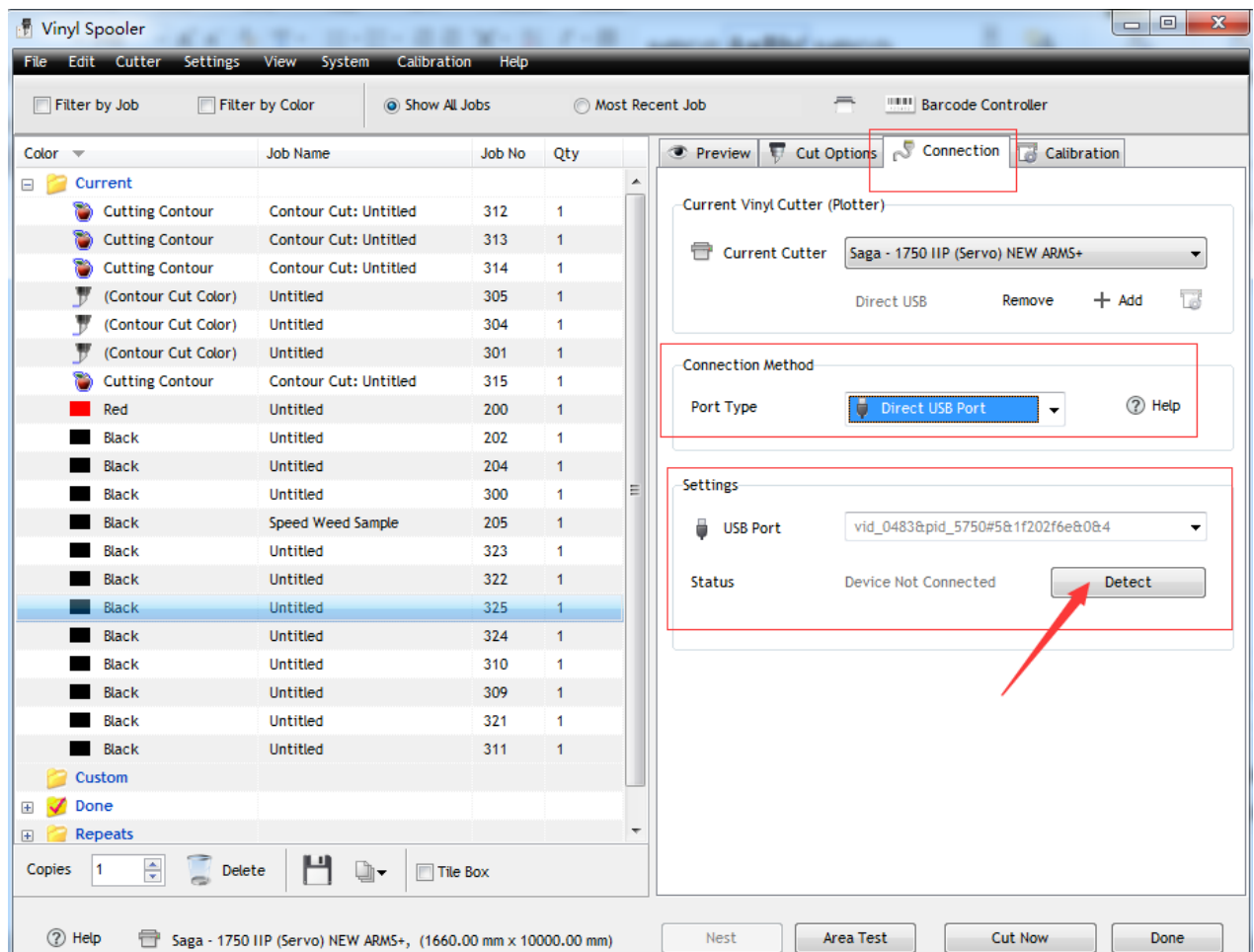
Cut options



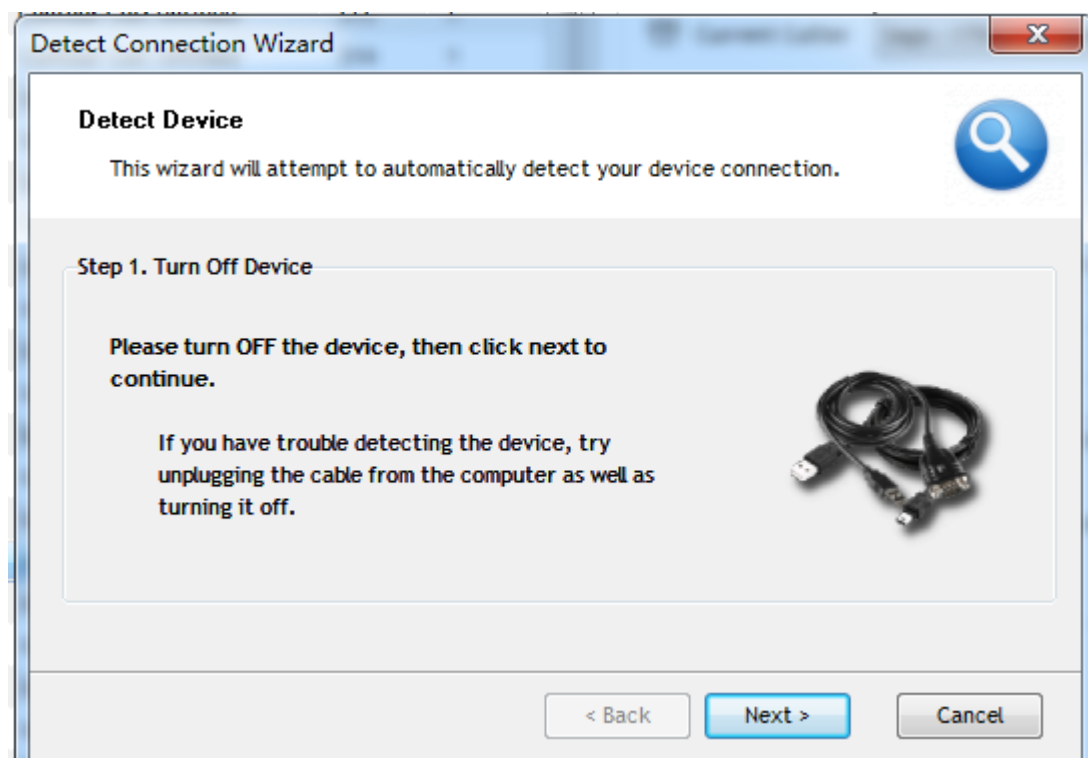
for different materials , need different Blade Offset , click the the button to set the Blade Offset



Connection

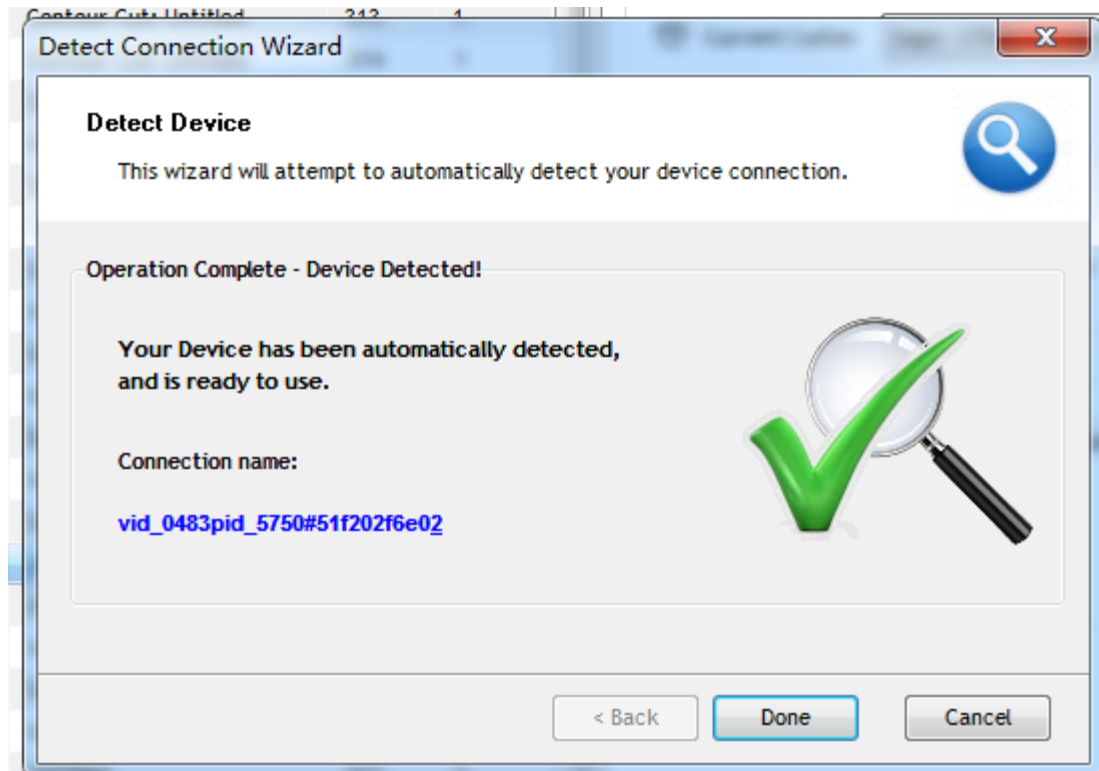


For the connection , the software connect the computer with USB , click the “Detect”

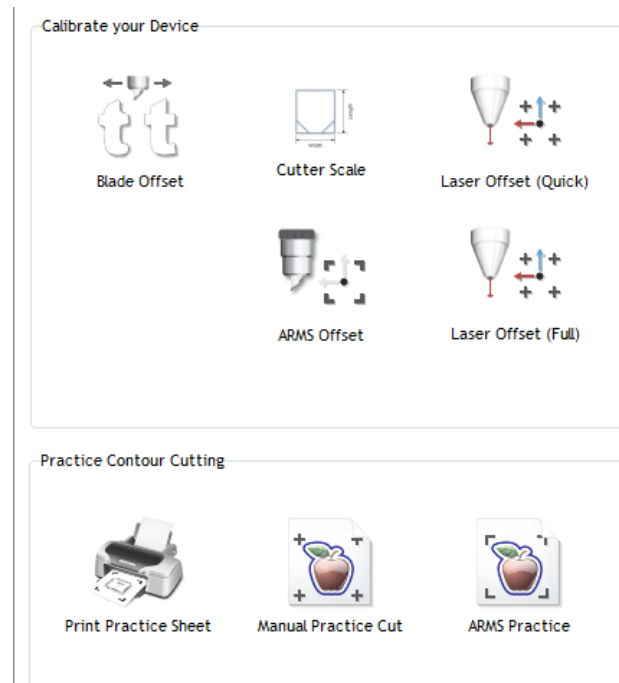


According to the hint .

Another ,open the cutter ,click the “Detect” , “reset” the cutter



Calibration



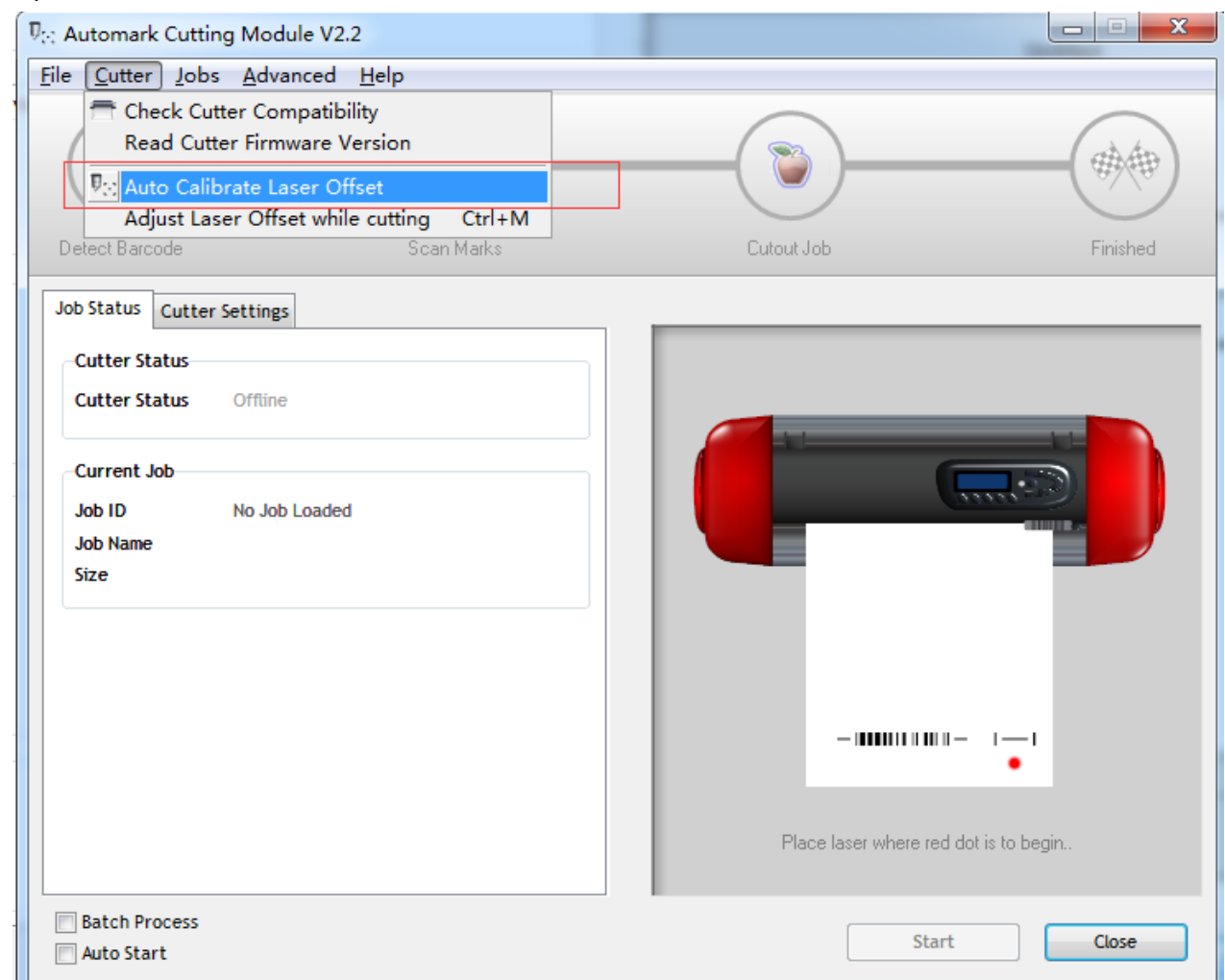
Blade Offset : the same as the cut options

Cutter Scale : set the scaling of the file

Laser offset: set the offset of the laser (two ways ,quick and full)

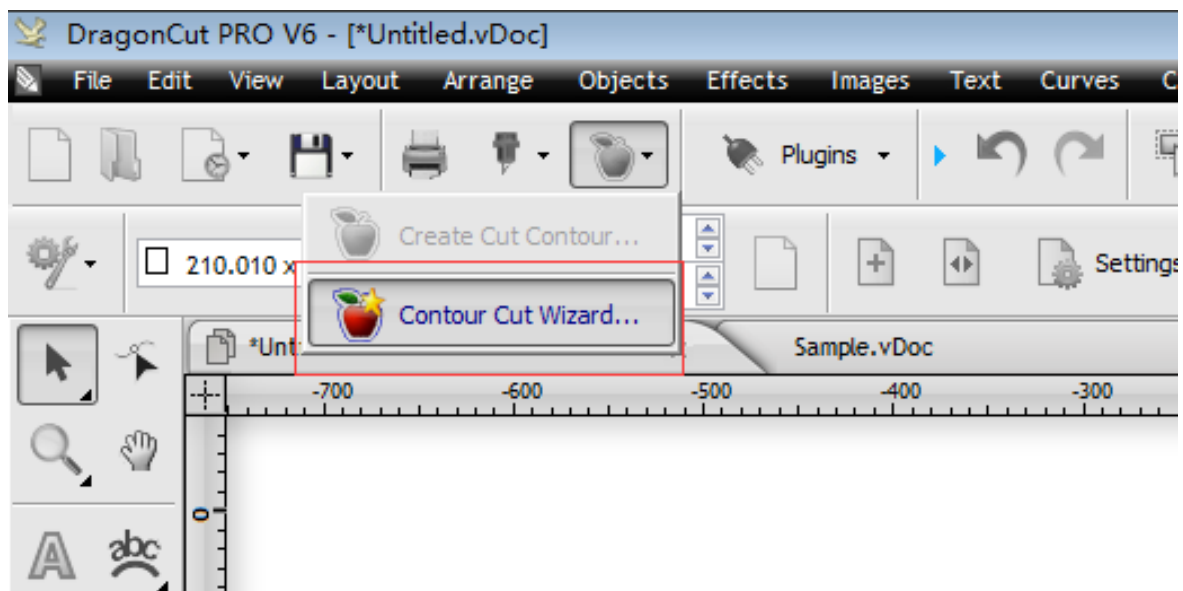
ARMS offset : After the version 5 , upgrade the method

Open the barcode controller

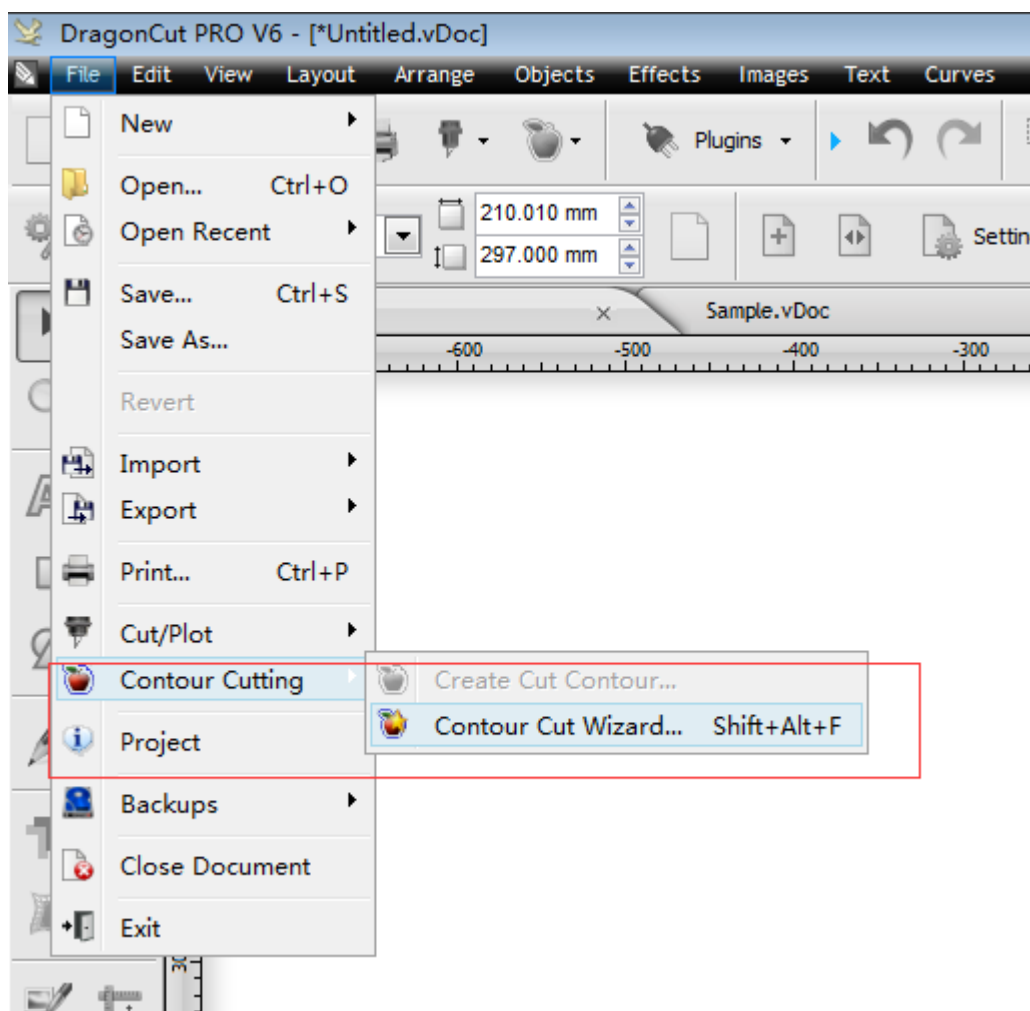


The only thing you need do is , put a white paper in the cutter ,and install the pen holder in the cutter , move the carriage to the middle of the paper , click the button like the above picture ,then according to the hint to set the laser offset.

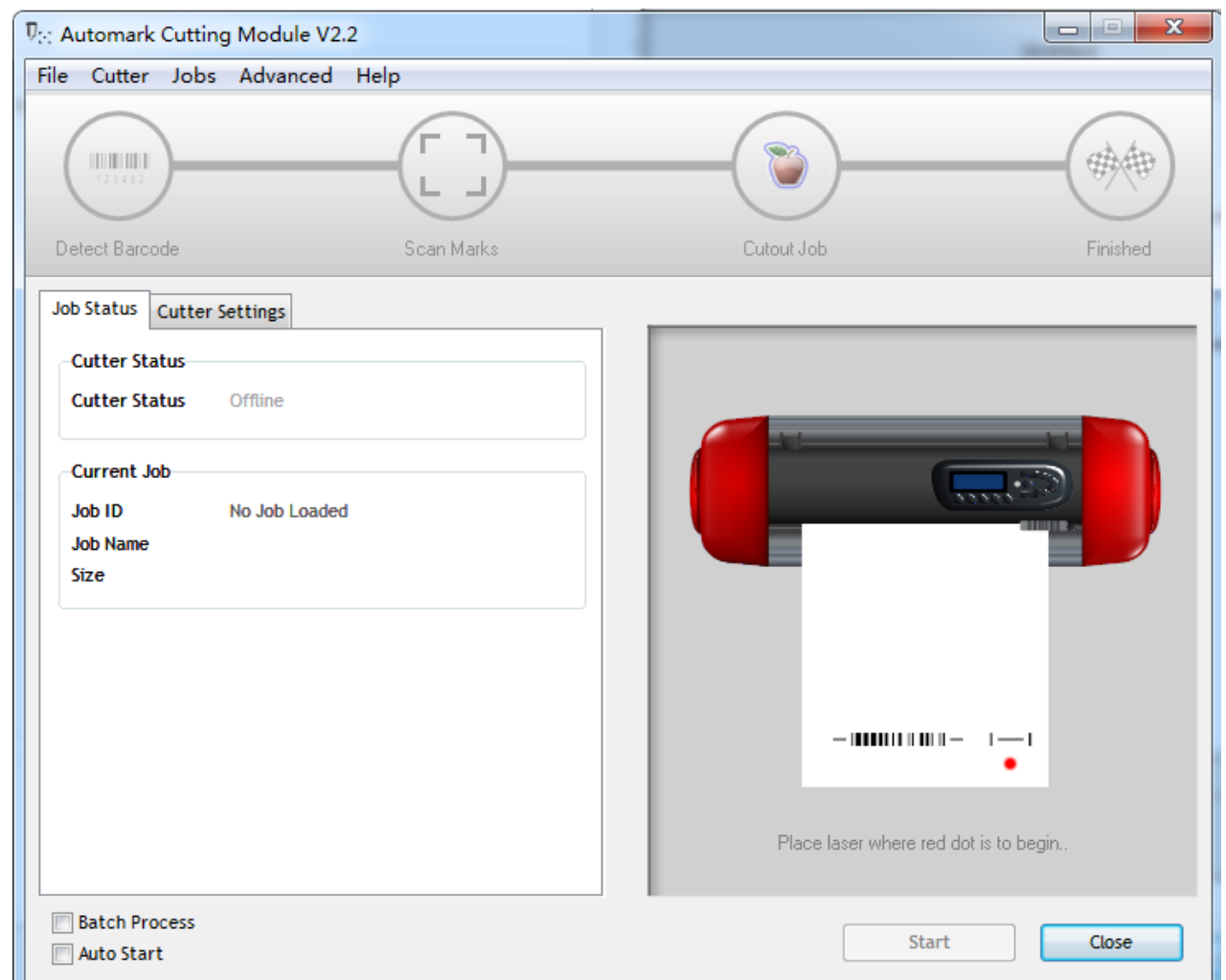
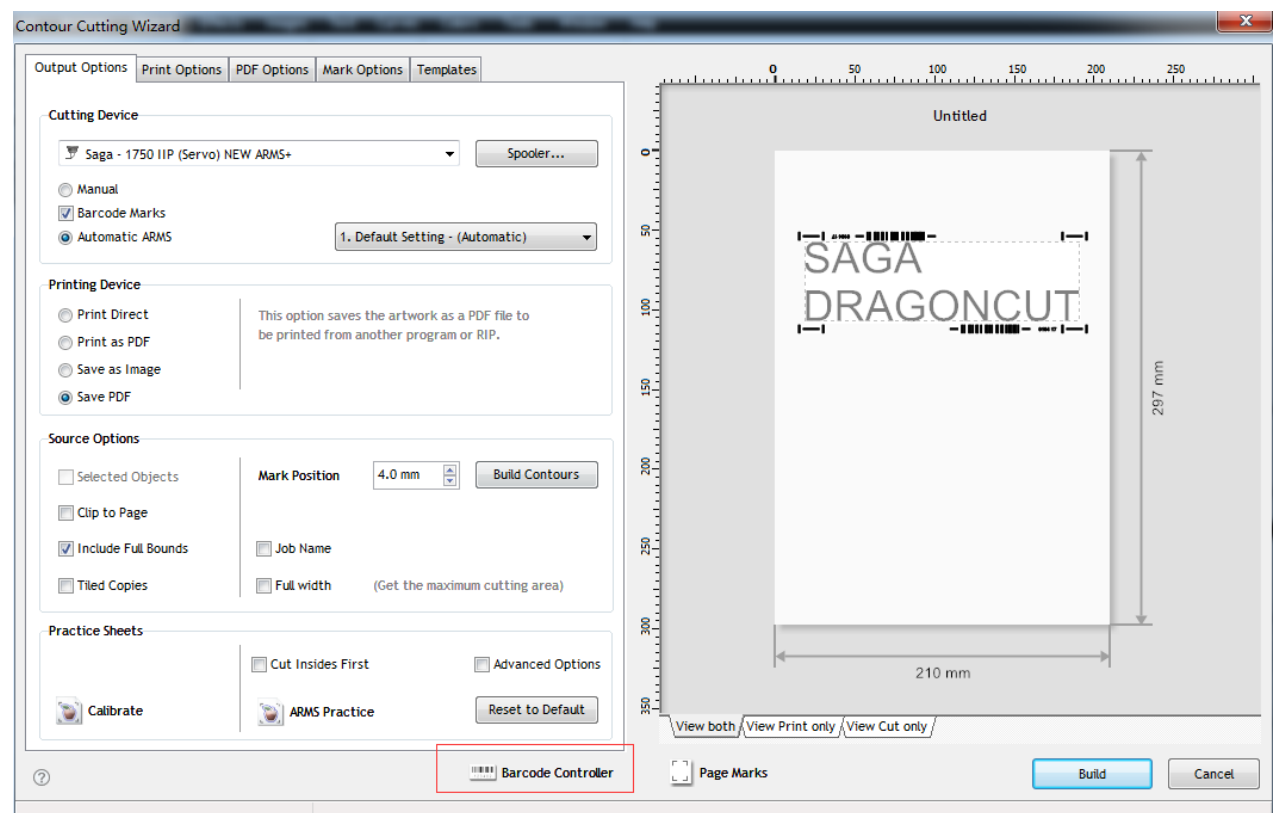
The way to open the barcode controller



Or

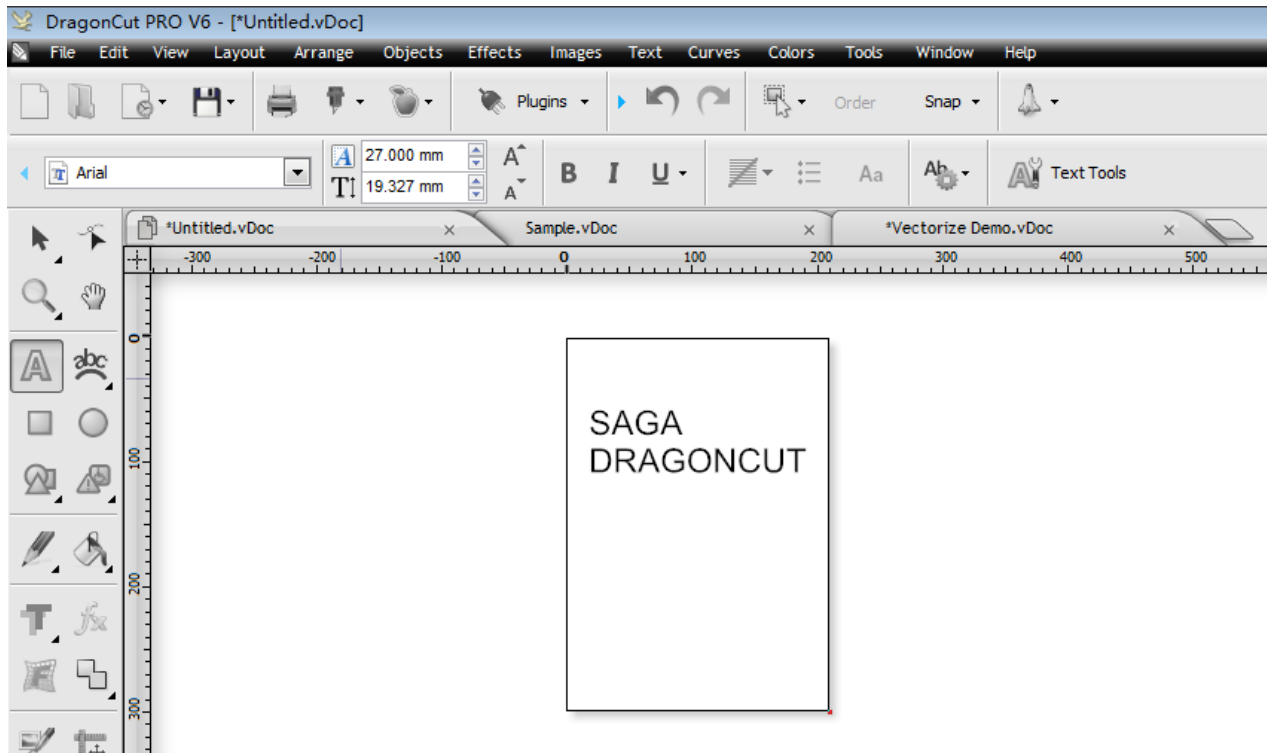


Then click the "Barcode controller"

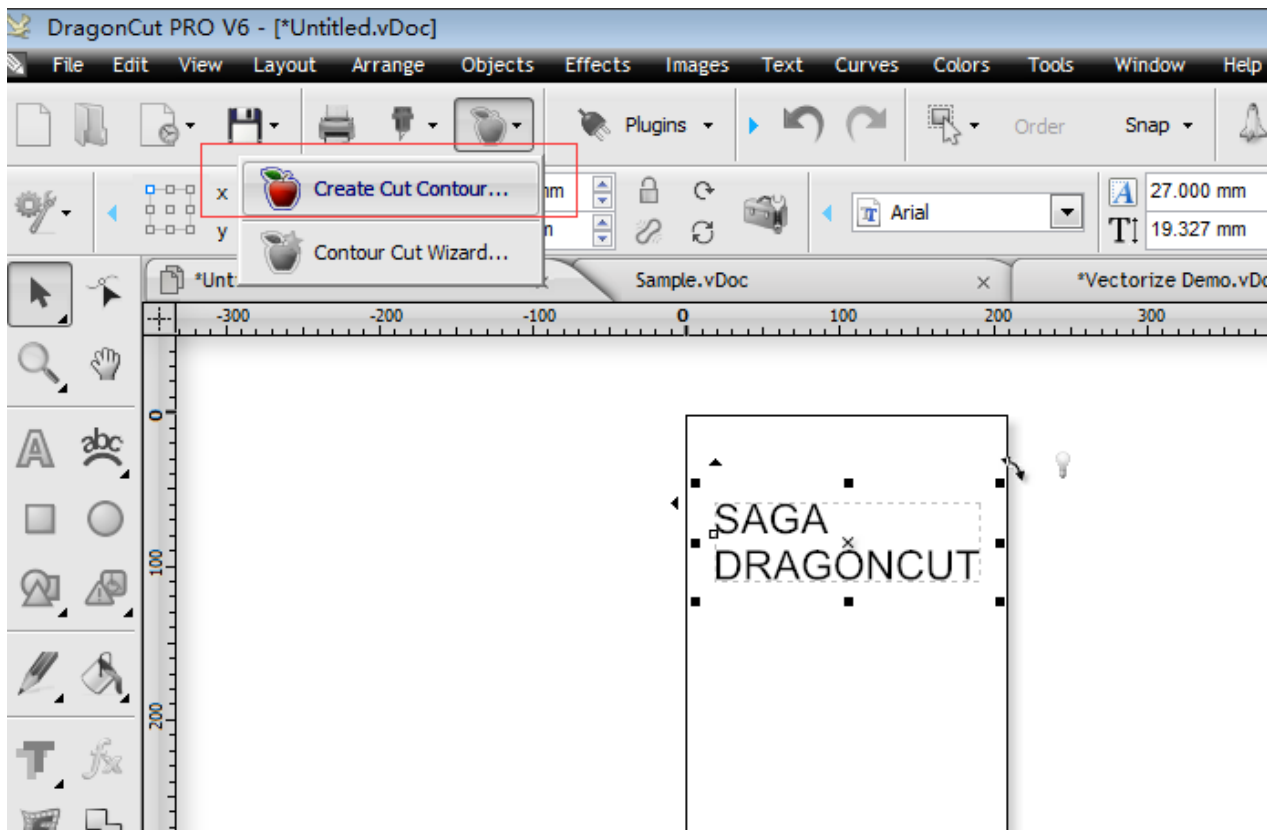


➤ Words ---contour cutting (for ARMS cutter)

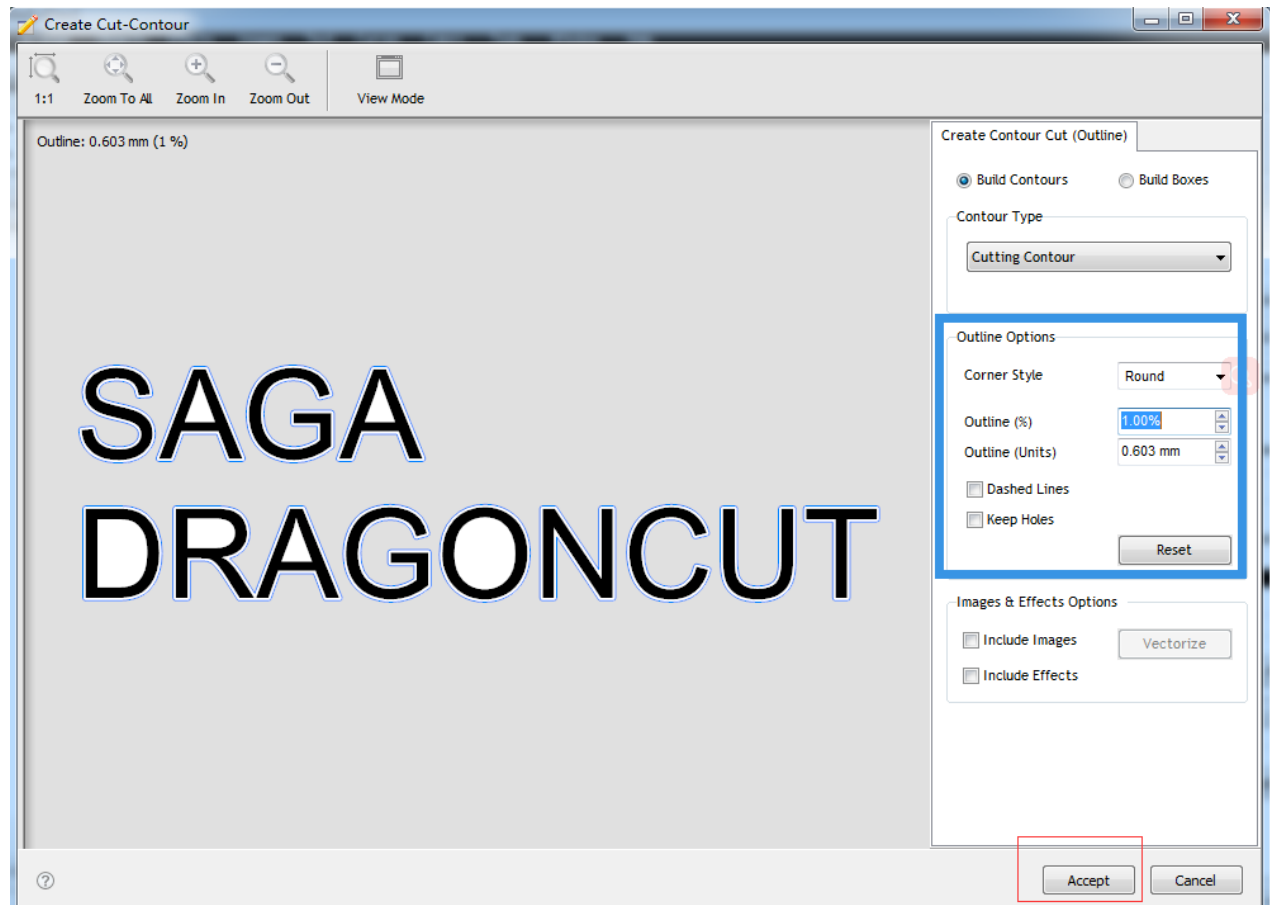
1、 Create file



2、 Create Cut-Contour



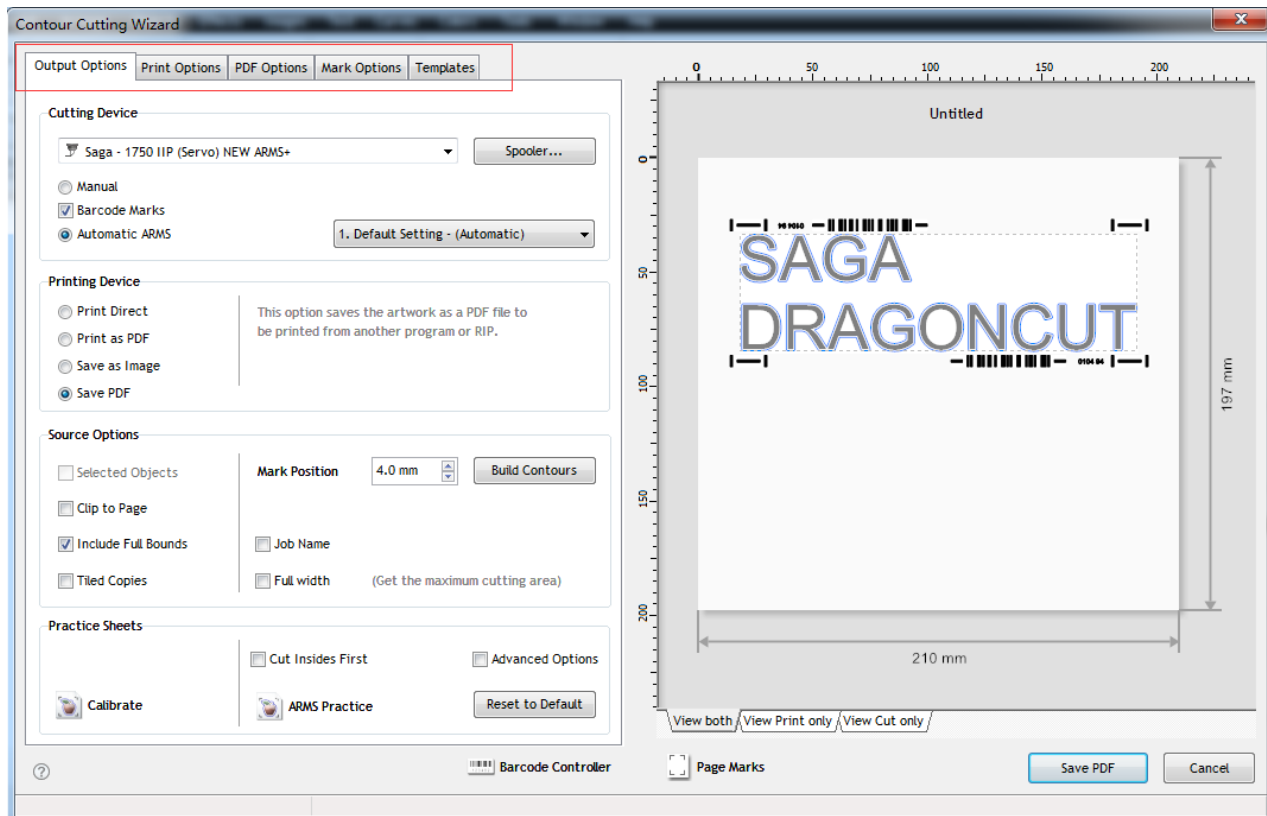
Set the contour options ,then “Accept”



The file will have the contour

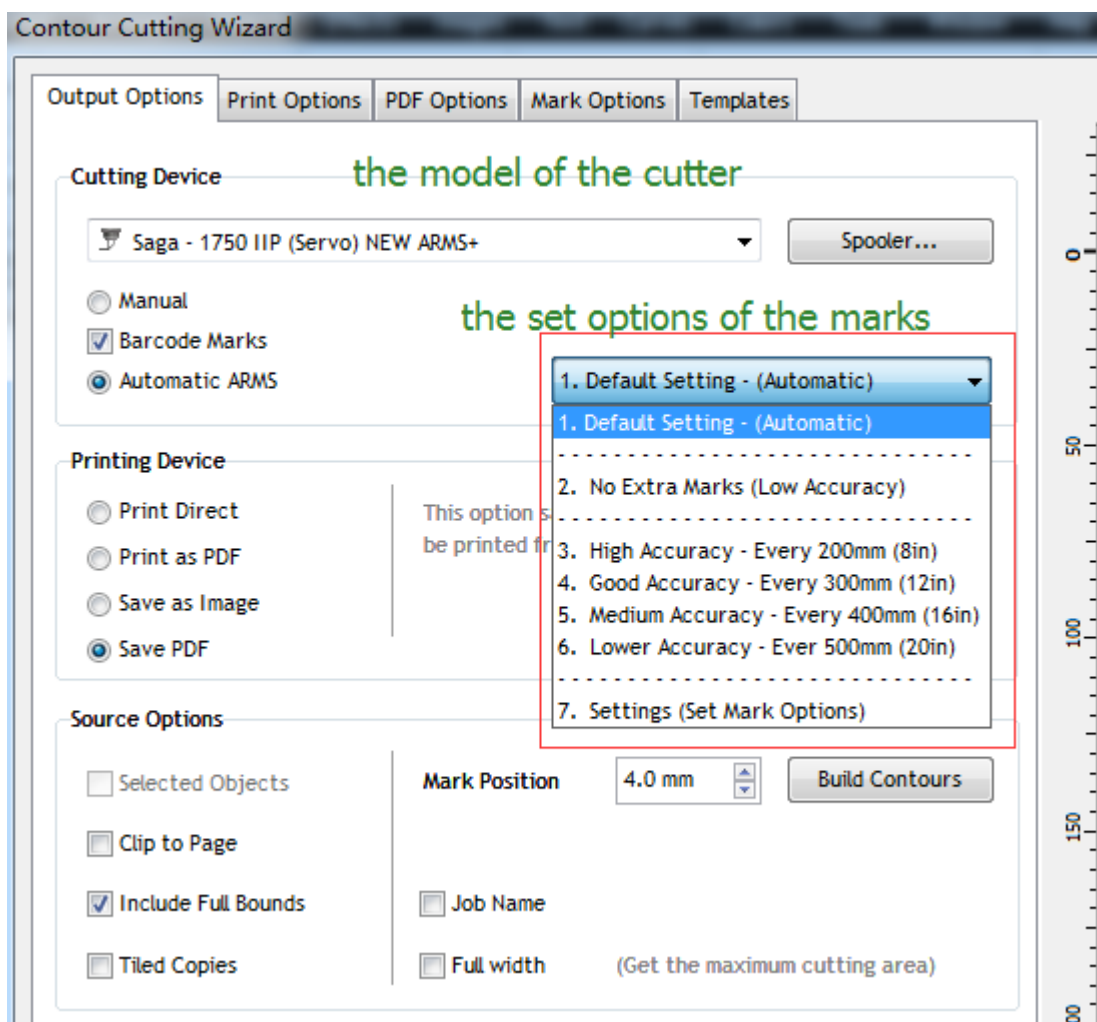


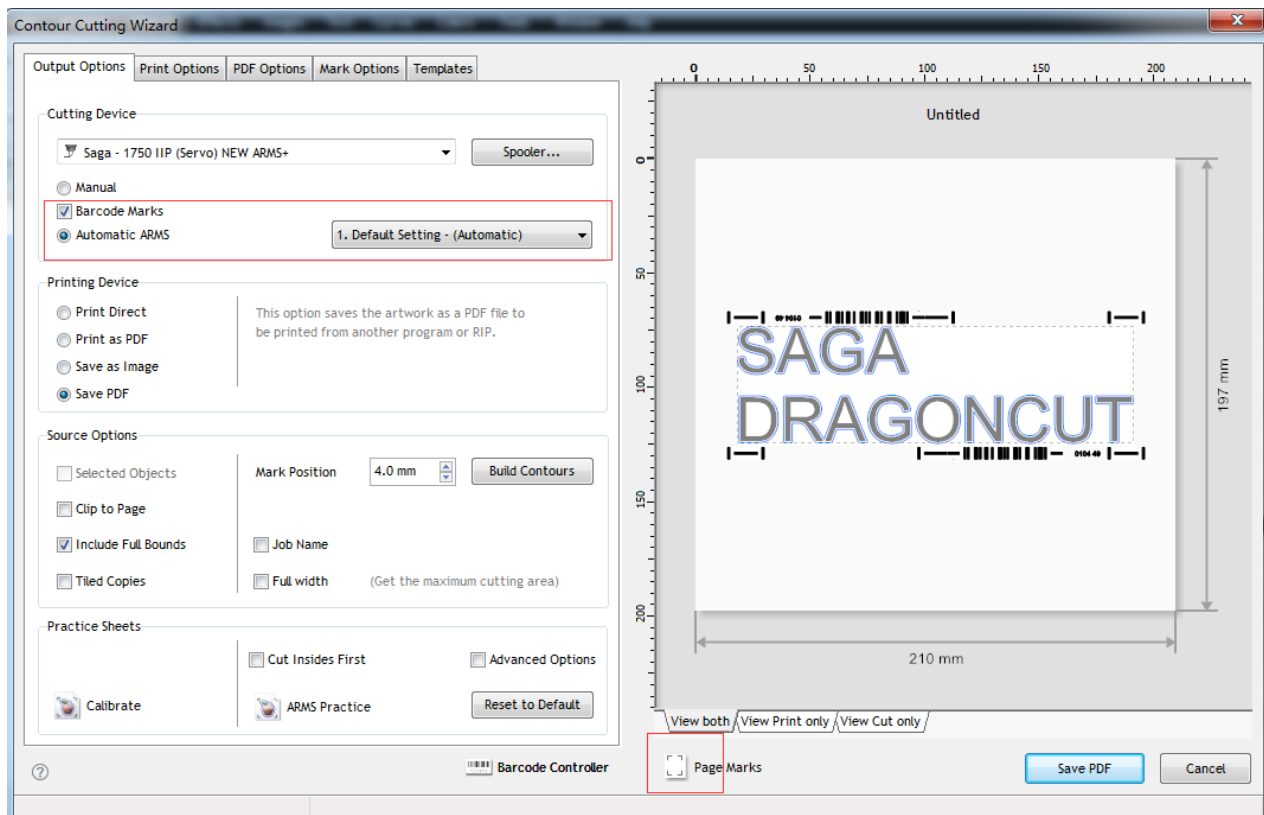
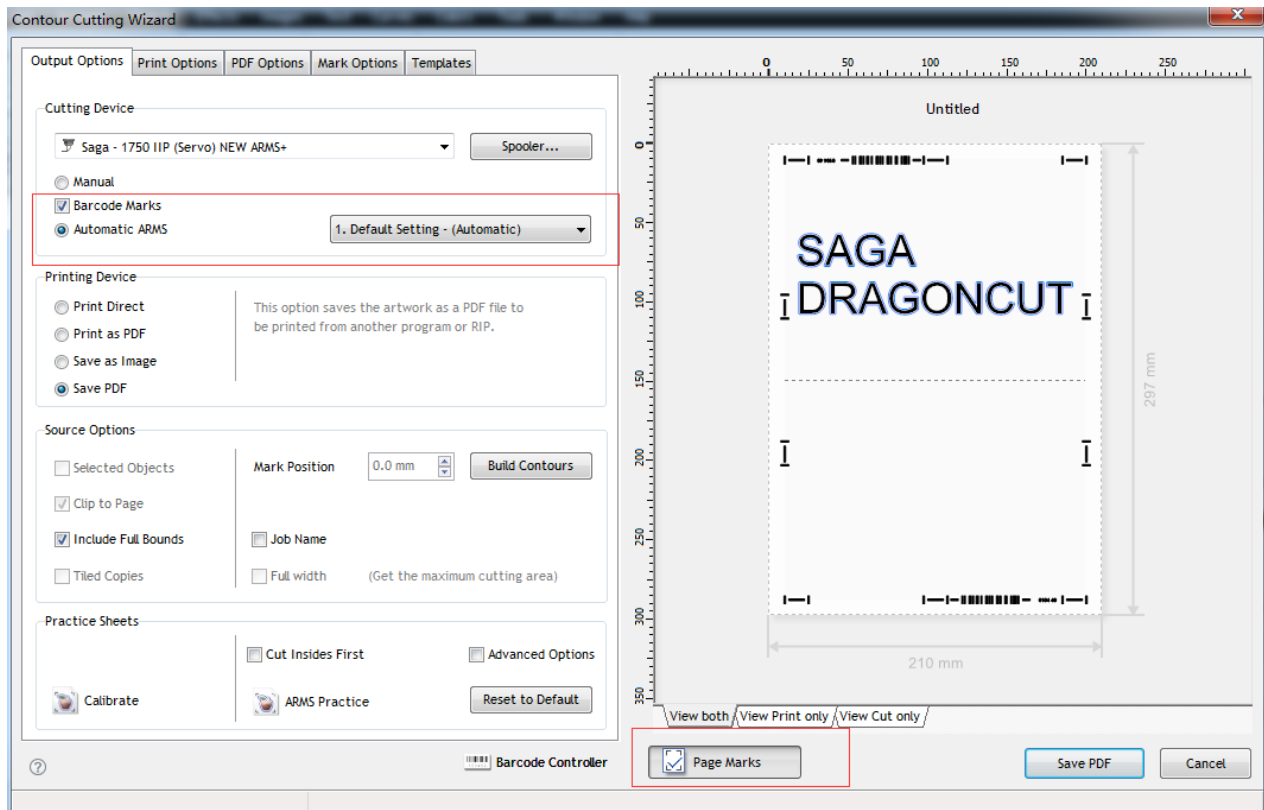
3、 Create the contour cutting wizard



For the [Amrs cutter](#) ,we recommend use the barcode marks ,like the above picture.

Output Options ,





Chose the appropriate marks, the above 2 pictures show you the difference between use the Page Marks and doesn't use the Page Marks (the Marks fit the page or not)

Chose the appropriate device for printing

Output Options | **Print Options** | PDF Options | Mark Options | Templates

Cutting Device

☒ Saga - 1750 IIP (Servo) NEW ARMS+ Spooler...

☐ Manual

☒ Barcode Marks

☒ Automatic ARMS 1. Default Setting - (Automatic)

Printing Device

☐ Print Direct

☐ Print as PDF

☐ Save as Image

☒ Save PDF

This option saves the artwork as a PDF file to be printed from another program or RIP.

Source Options

Chose the appropriate compose type to your materials

Source Options

☐ Selected Objects

☒ Clip to Page

☒ Include Full Bounds

☒ Tiled Copies

Mark Position 4.0 mm Build Contours

☒ Job Name Untitled

☐ Full width (Get the maximum cutting area)

Quantity

Horizontal 2 Spacing 10.0 mm 430 mm

Vertical 3 6 copies 10.0 mm 911 mm

Print options

Output Options | **Print Options** | PDF Options | Mark Options | Templates

Printing Position

☐ Use design size and position ☐ Auto center small jobs (A4 size)

☐ Use Page Marks

Advanced Position

Left Position 0.0 mm

Top Position 0.0 mm

Reset Center

Cutting Tool Presets

Contour Type	Cutting Preset	Blade Type	Blade Preset
<input checked="" type="checkbox"/> Cut Contour	(Default)		

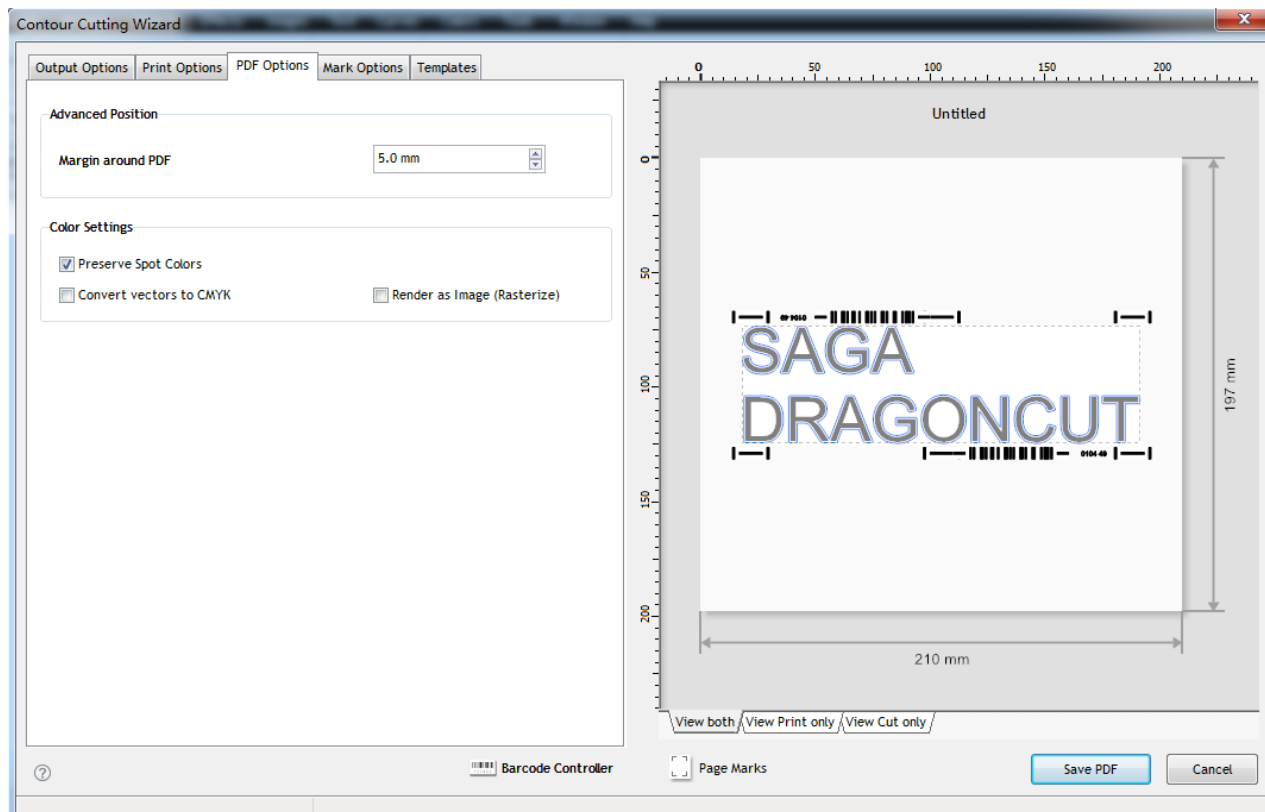
Untitled

194 mm

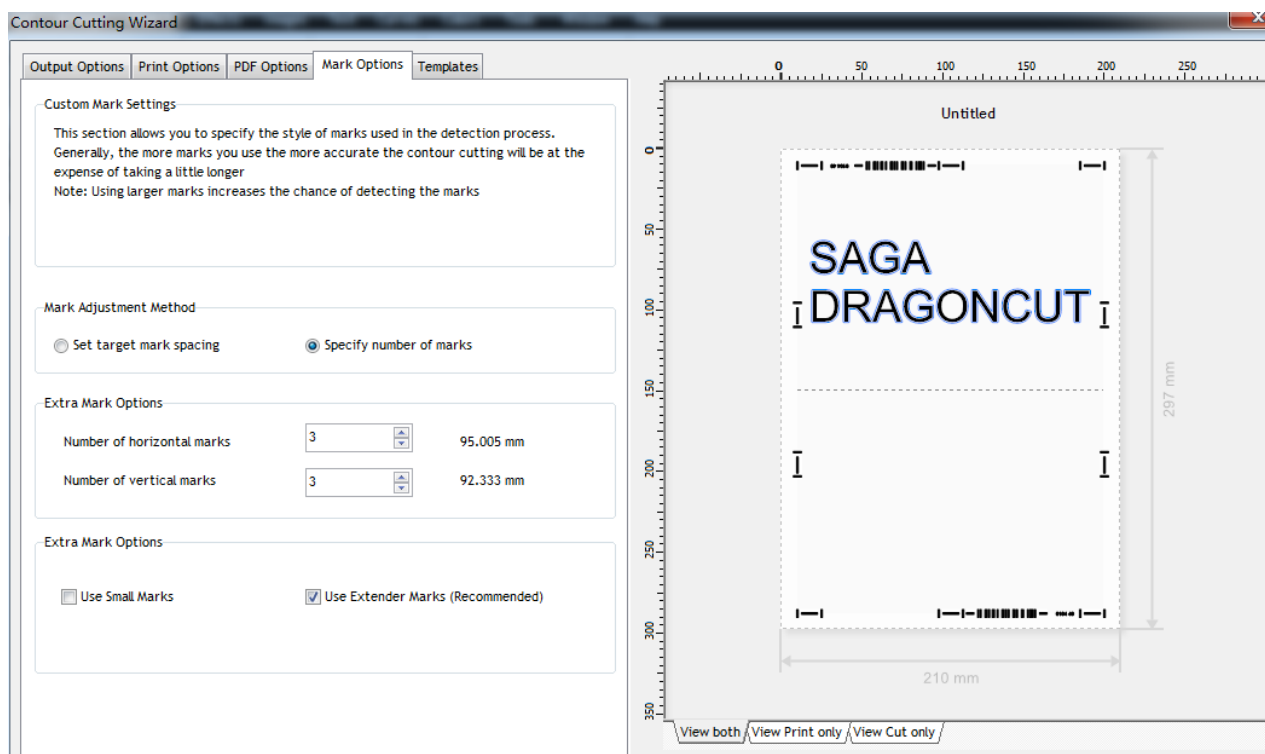
74 mm

Chose the appropriate set options to your materials

PDF Options

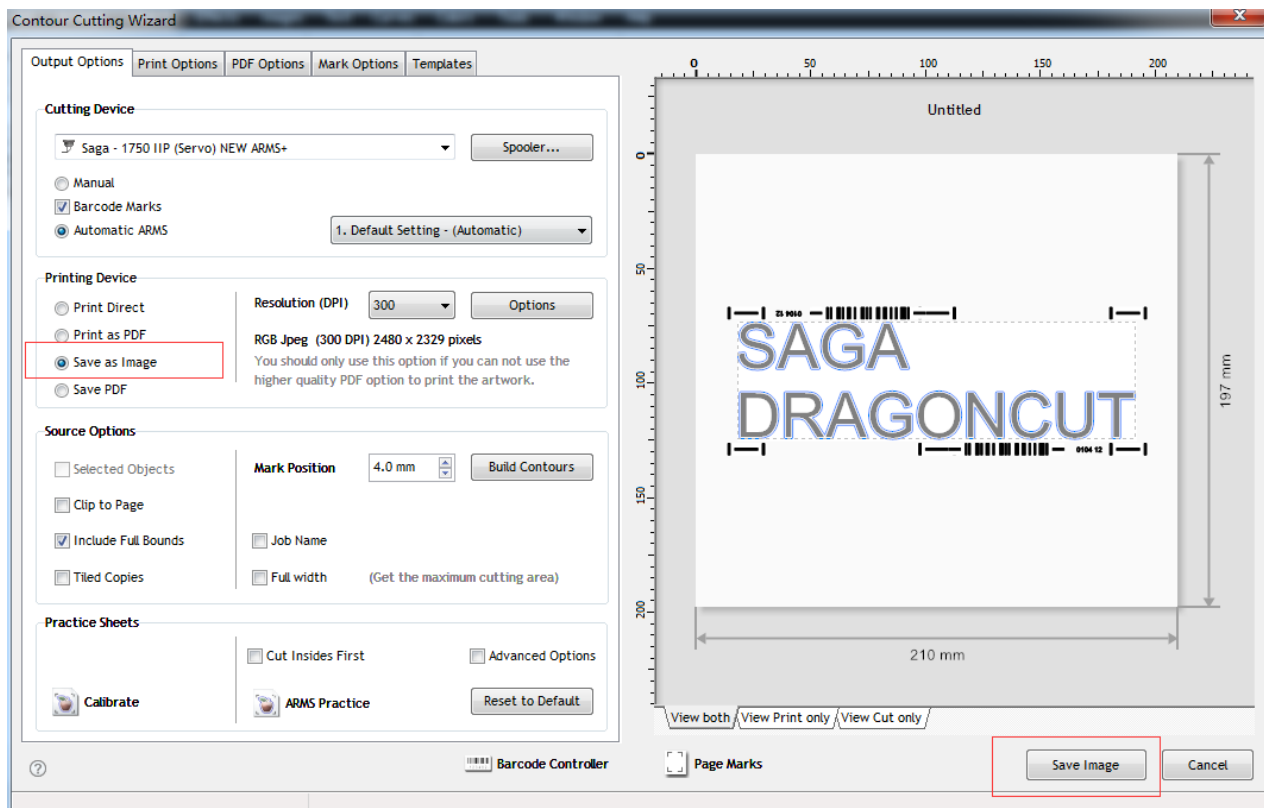
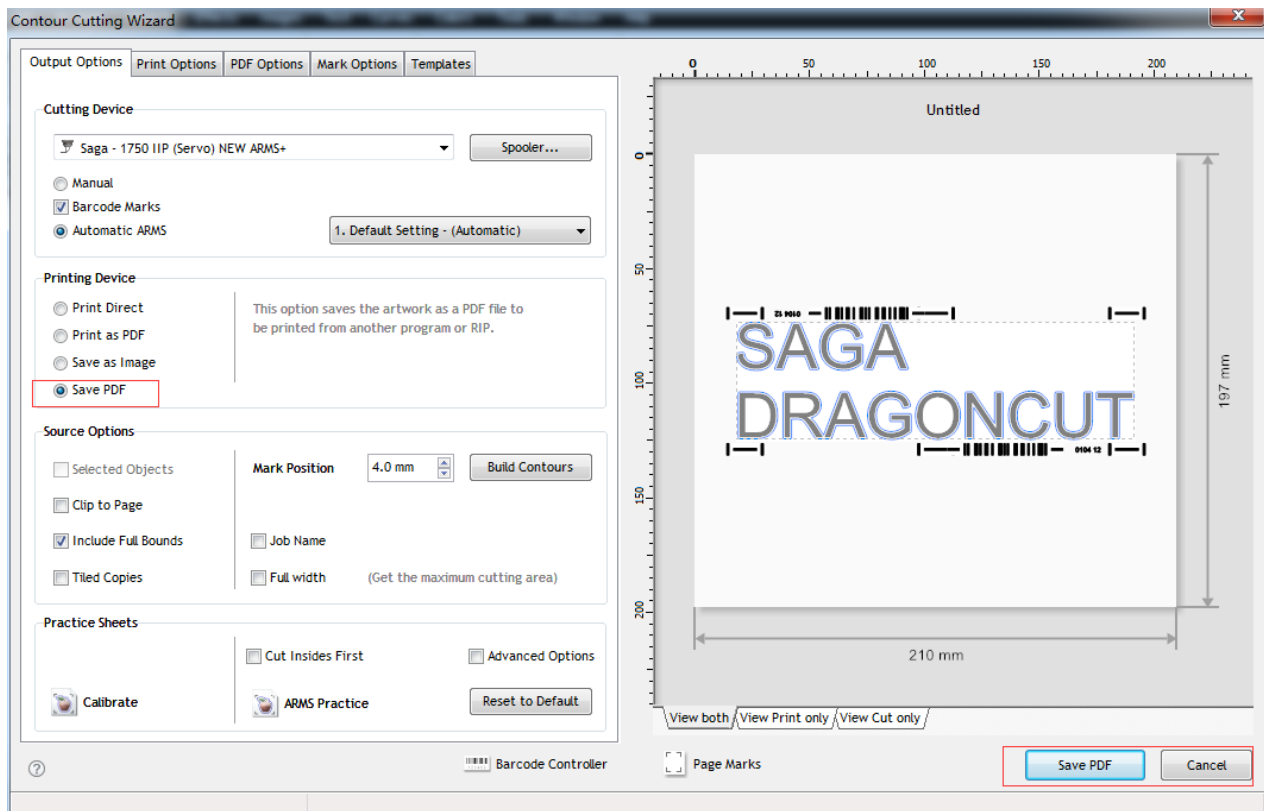


Marks options



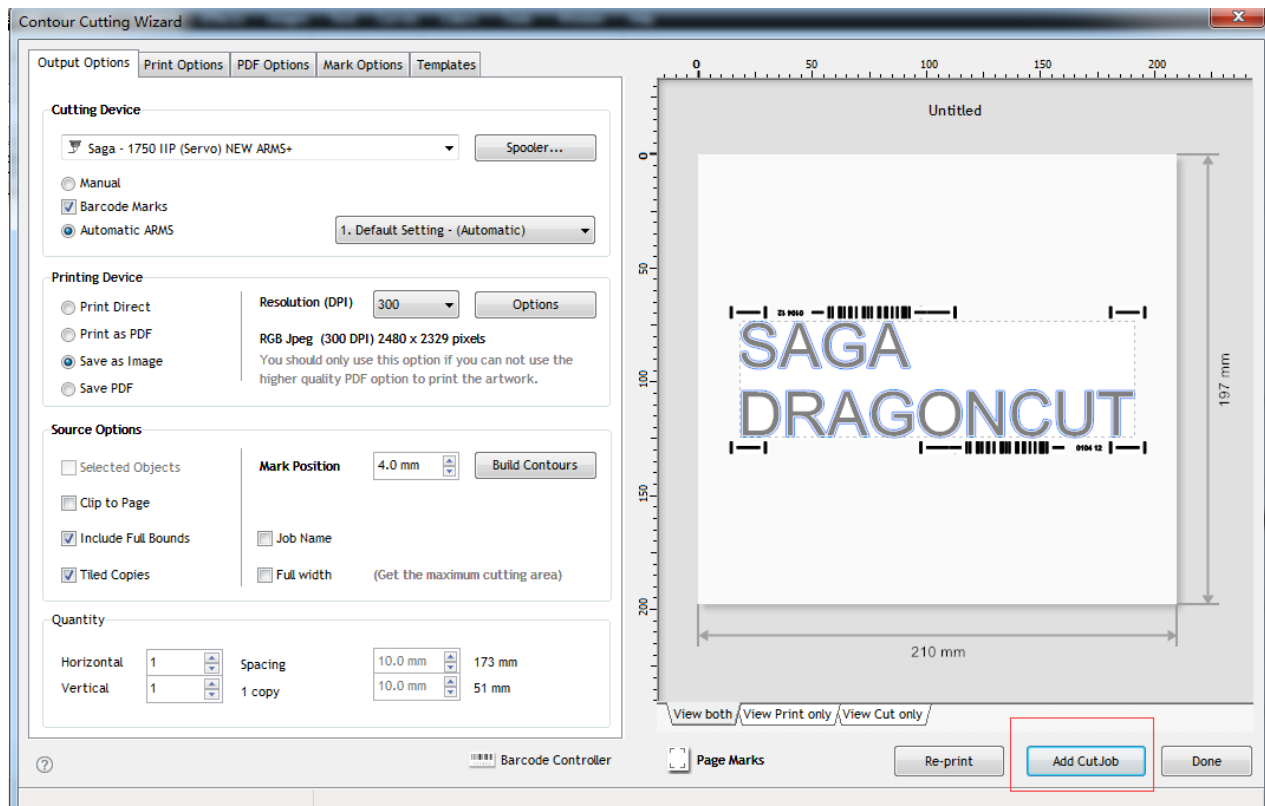
Chose the appropriate set options to your materials

4、 save the file



Save the file as the device you chose

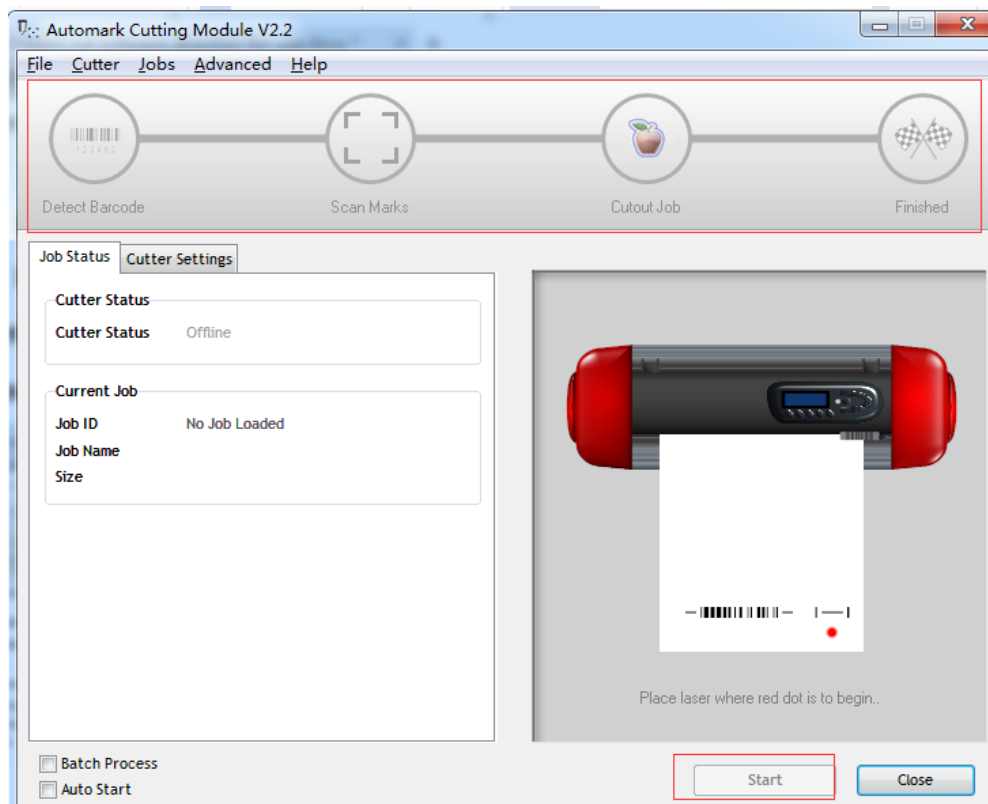
5、 Add the cut jobs



The most important thing is you need remember add the cut jobs ,otherwise the software can't detect the barcode.

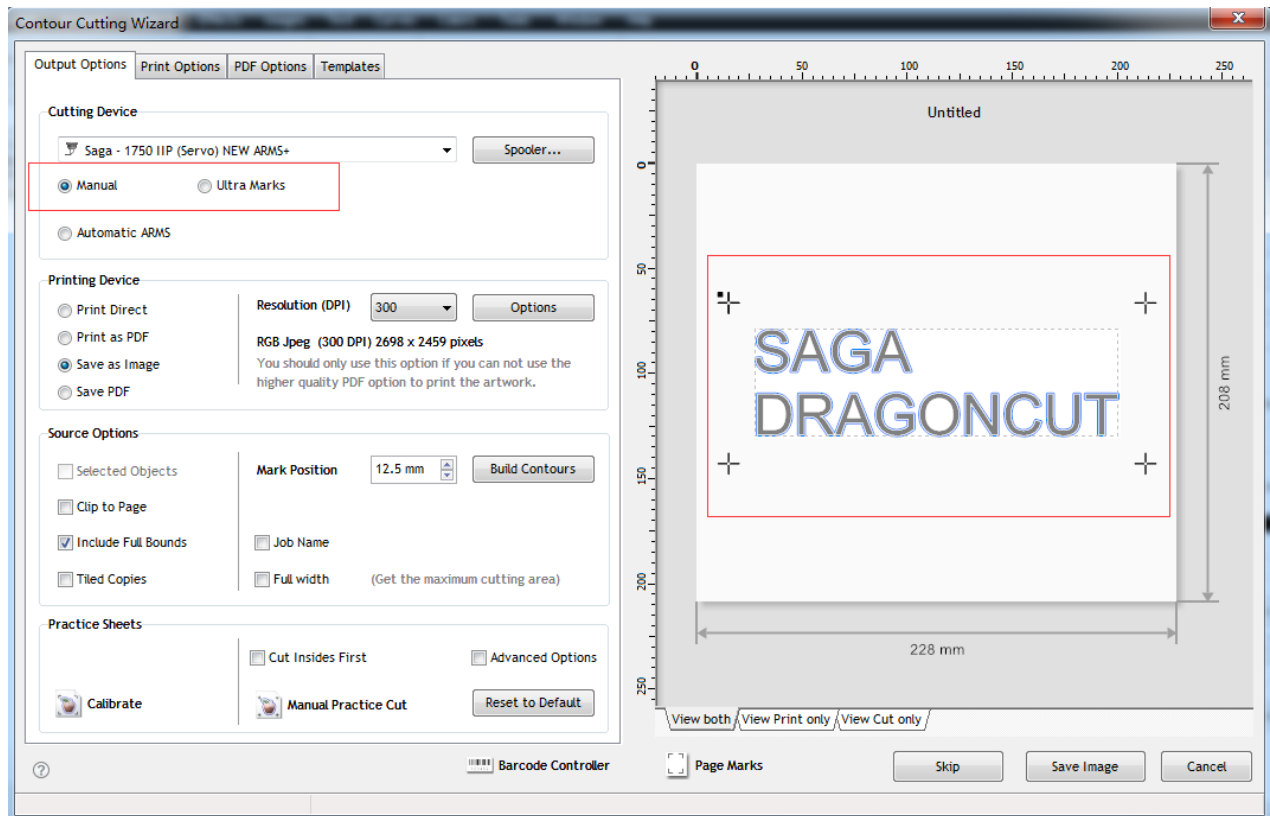
6、 print the file you have saved

7、 Put the materials you have printed and move the carriage ,make the laser at the place where the picture show, then click the “start” , start the contour cutting.



➤ Words ---contour cutting (for servo/stepper cutter)

- 1、 Create the file （the same as the ARMS cutter）
- 2、 Create Cut-Contour （the same as the ARMS cutter）
- 3、 Create the contour cutting wizard



The difference is the Marks , the servo/stepper cutter should use the manual Marks. The other options set the same as the ARMS .

Dragoncut can be installed on as many computers as you want, but, ONLY one computer can be activated. If you want to activate the software on another computer to cut, please deactivate the previous device first. It will be locked if you try to activate on different computers the same time. Note: Deactivation requires internet as well. Please follow the instructions appears on the desktop if you don't have internet on the computer you want to deactivate.