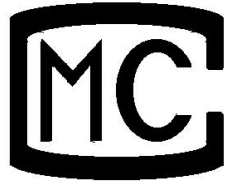


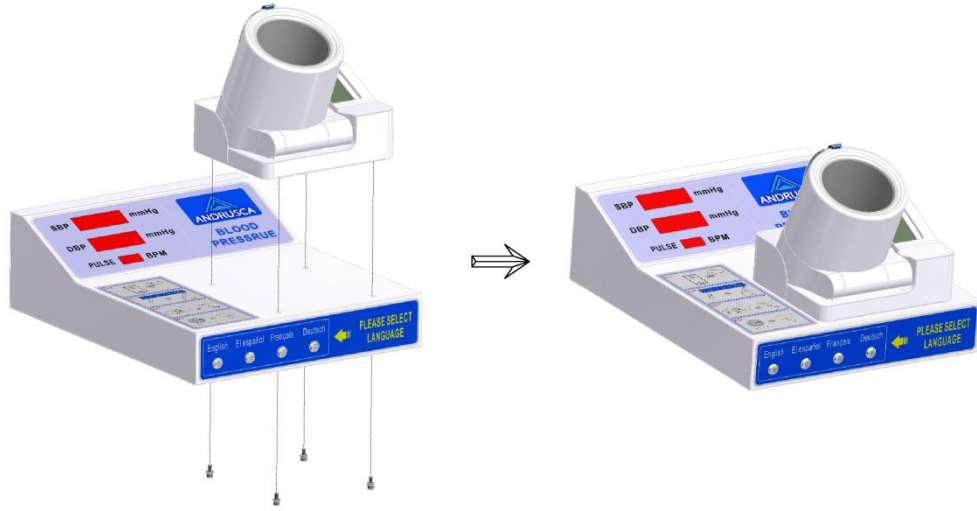
DHM-10BP



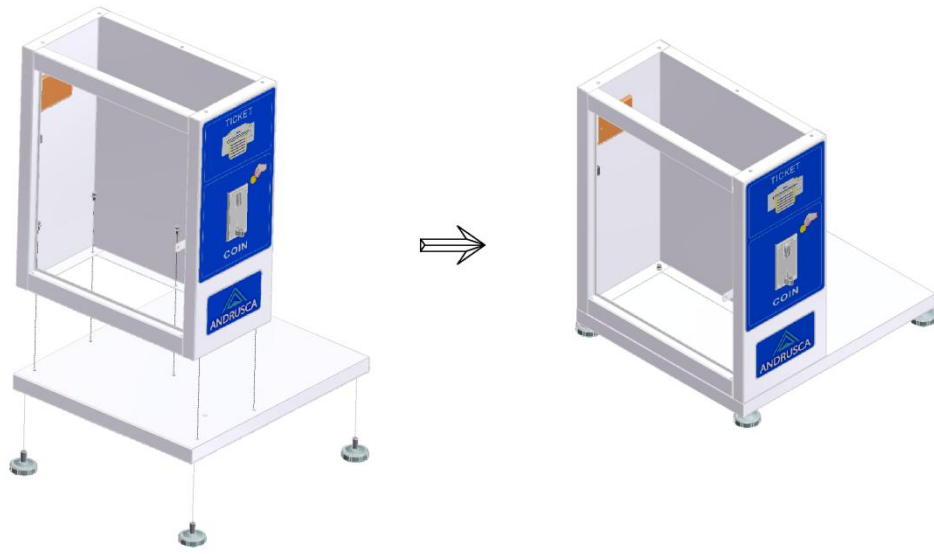
MANUAL

Installation Drawing

Step 1



Step 2



Step 3

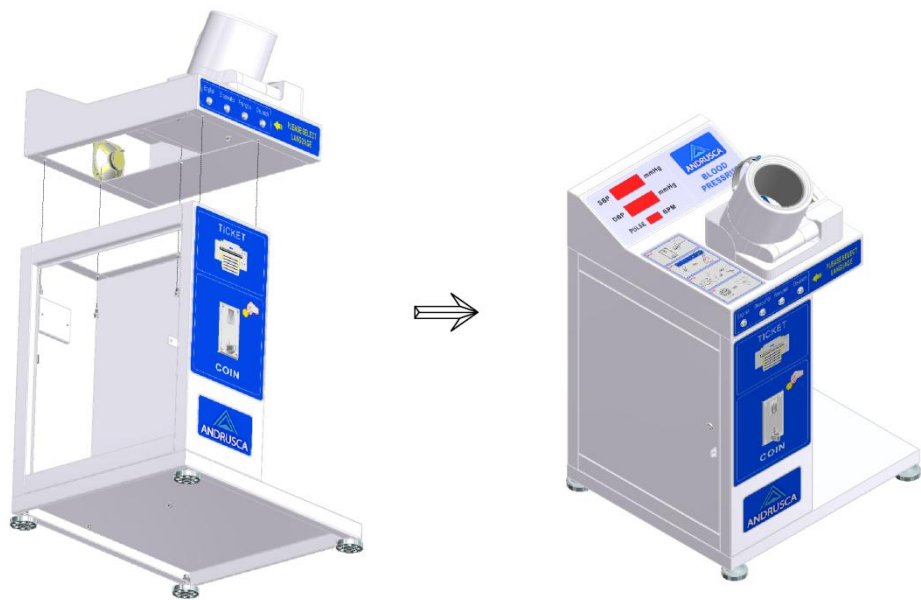
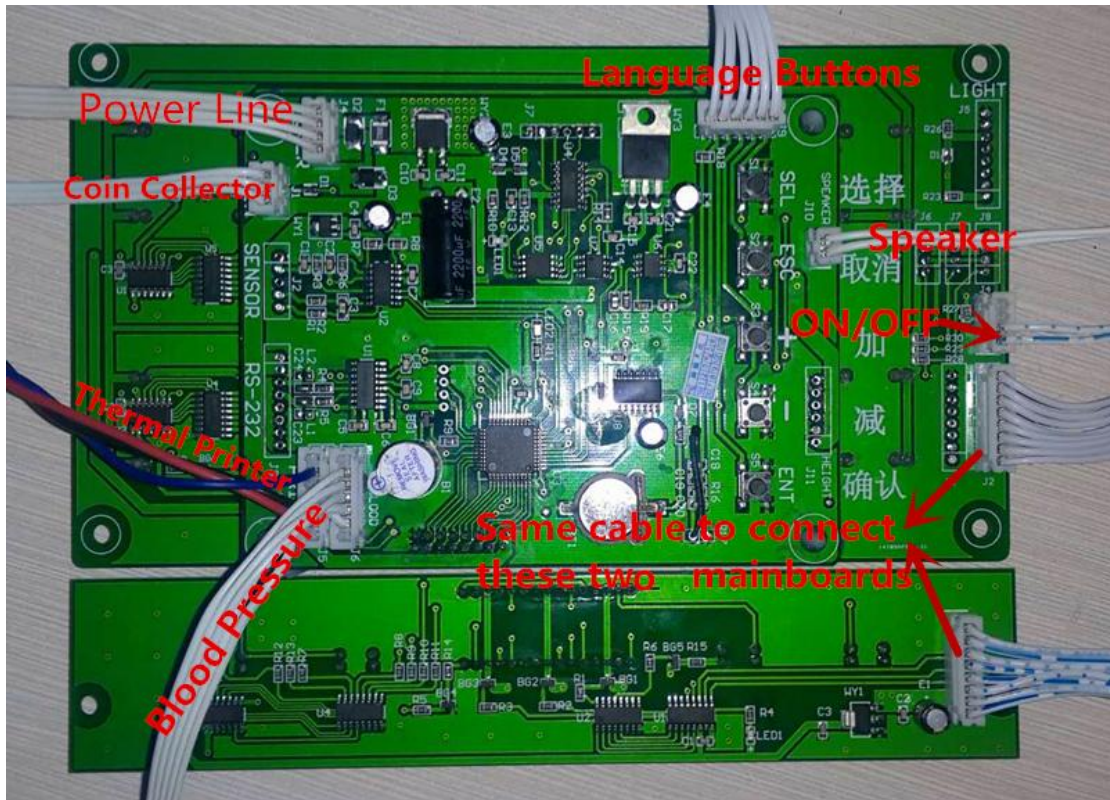


Diagram of the Main Board:



Operation

Startup: Connect the power line and switch on the machine, the screen will display the initial information.(Normally, the first line will display 5-02,5-03,5-06 in order.If there is E-02 on the second display, the machine is malfunction.Please contact manufacture and do not inspect by yourself.)After initialization, the machine will go to standby code.(The first line displays the date,like ; the second line displays time,like ; The third line shows temperature,like).

Attention: Make sure the output voltage is DC 12V before startup.

Pronunciation: The machine can voice broadcast the measuring result automatically(also can be set without pronunciation).During standby code,the machine will speak out Welcome recurrently.Please read the function setting (and) to set time interval and Volume.

Printing: The machine will print the measuring result automatically.(the function setting should be 1.)

Measurement Procedure

Step 1: Please put the coin

Step 2: Please choose the language

Step 3: Please insert the upper arm into the gauge arm and Press ON/OFF button when you are ready.

Step 4: Get the ticket.(The machine will print the measuring result automatically after measurement.)

Attention

1.Please press ON/OFF to stop measuring when you feel uncomfortable during the measuring process. When measurement failes , people can measure blood pressure once again through pressing ON/Off. When people give up the measurement ,

please press ON/Off for 3 seconds.

2. There is limiting time between every step. The machine will return into standby code automatically, if users don't measure correctly within the limiting time. Please read the function setting **1-03** to set the limiting time.

Function Setting

All function settings are operated through the buttons on the main board (**UP** **DOWN** **SEL** **ENT** **ESC**). Please look at the diagram of the main board. There are 13 items in the menu. Users can enter into the menu through **ENT** and press **UP** or **DOWN** to choose the item, when the machine is at standby code.

1. Date Adjustment

Choose menu code **1-01** and press **ENT**; The first line displays the present date. The flickering date means the date can be adjusted; Adjust the displaying date to consist with actual date by pressing **+** or **-**; Press **SEL** to set year, month and day recurrently; Press **ENT** to save the setting and exit and press **ESC** to cancel the setting and exit.

2. Time Adjustment

Choose menu code **1-02** and press **ENT**; The first line displays the present date. The flickering date means the date can be adjusted; Adjust the displaying time to consist with actual time by pressing **+** or **-**; Press **SEL** to set minute and hour recurrently; Press **ENT** to save the setting and exit and press **ESC** to cancel the setting and exit.

3. Displaying Time of Measuring Result

Choose menu code **1-03** and press **ENT**; The second line shows 20, which means the displaying time is 20 seconds now; Adjust the displaying time by pressing **+** or **-** (The range of displaying time is from 0 to 250 seconds.); Press **ENT** to save the setting and exit and press **ESC** to cancel the setting and exit.

4. Default Language

Choose menu code **1-04** and press **ENT**; Choose the language by pressing **+** or **-**; Press **ENT** to save the setting and exit and press **ESC** to cancel the setting and exit.

Code	Language
0	English
3	Russian
4	German
5	Spanish
8	French

5. Time Interval

Choose menu code **1-05** and press **ENT** ;The second line displays **3** (range is 0-50), which means the time interval of welcome is 15 seconds; Press **ENT** to save the setting and Exit and press **ESC** to cancel the setting and exit.

6.Pronunciation

Choose menu code **1-06** and press **ENT** ;The second line displays **1** or **0**.

1: voice broadcast the measuring result after measurement ;

0: do not voice broadcast the measuring result after measurement .

Press **+** or **-** to adjust ;Press **ENT** to save the setting and Exit and press **ESC** to cancel the setting and exit.

7.Total Measuring Quantities

Choose menu code **1-07** and press **ENT** ; The second line is the total measuring quantities(the number will clear once beyond 9999); Press **SEL** to print the result and clear;Press **ENT** to save the setting and exit and press **ESC** to cancel the setting and exit.

8.Printing Setting

Choose menu code **1-09** and press **ENT** ;The second line displays **1** or **0**.

1: Print the measuring result

0: Do not print the measuring result

Press **+** or **-** to adjust ; Press **ENT** to save the setting and exit and press **ESC** to cancel the setting and exit.

9. Coin Setting

Choose menu code **1-10** and press **ENT**; The second line displays **1**, which means the machine needs 1 coin. Press **+** or **-** to adjust the present value (0-100). Press **ENT** to save the setting and exit and press **ESC** to cancel the setting and exit.

10. Parameter Setting

Choose menu code **1-11** and press **ENT** to save the setting and exit.

11. Restore Factory Settings

Choose menu code **1-12** and press **ENT**, then the first and second line will display **8888**; press **ENT** to restore factory settings and exit.

12. Volume Adjustment

Choose menu code **1-13** and press **ENT**, then the first line will display **----**. Press **+** or **-** to adjust the volume; Press **ENT** to save the setting and exit and press **ESC** to cancel the setting and exit.