



Professional manufacturer of diamond & CBN tools

JR (Guangdong) New Material Incorporated Company

Web: www.jrdiamondtools.com

Tel: 86-02031105688

Add: Building C28, Huachuang industrial park, Jinshan Avenue, Shiji Town, Panyu, Guangzhou-511450, China

Contents

```
graph LR; A[Contents] --- B[Company profile]; A --- C[Certifications]; A --- D[Products & service]
```

Company profile

Certifications

Products & service

Company profile



For more than 29 years, JR(Guangdong) New Material Incorporated Company—is the only diamond&CBN grinding wheels manufacturer in Guangzhou, has become one of best choices in super hard material industry for South China and International market.

JR's electroplated, resin bond and vitrified bond wheels are sold to over 30 countries including America, Germany, Austria, Japan, Mexico, Russia and so on. With strong R&D team, strict quality control systems, powerful domestic and foreign sales network, our products have covered stone, ceramic, glass, precious stone, diamond, hard metal, and constantly expanded to the photoelectric high-tech fields such as automotive components, precision mechanical parts, electronic and optical glass.

JR has got ISO9001 and BSCI certificate. We take pride in developing and producing high-quality, high-performance products to meet the technological challenges of grinding conventional metals and today's sophisticated alloys.

Development History

1992
Henan Runfa Superhard Abrasives Factory was founded in Shangqiu City of Henan Province, which is already a famous brand amid China's superhard materials industry.

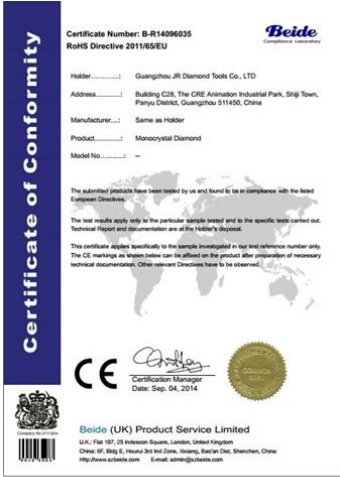
2005
Guangzhou JR Diamond Tools Co., LTD. was established in Guangzhou City. We moved our factory to Guangdong province.

2014
Moved to this new industrial park. This park is a national project, which all the enterprises in this park meet the environmental standards.

2015
Established sister company "NEWDERMO", JR mainly supply diamond tips.

2019
Due to the development of the company, the company name was changed from ". Guangzhou JR Diamond Tools Co., LTD ". to "JR(Guangdong) New Material Incorporated Company."

Certifications



ROHS



REACH



MSDS

Patents, CE, ROHS, REACH, MSDS etc



Producer :	Guangzhou JR Diamond Tools Co., Ltd.
CERD : 368600 and Audit Id : 125689	Audit Date : 11/06/2018
Audit Type :	Follow-up Audit
Auditee :	Guangzhou JR Diamond Tools Co., Ltd.
Audit Date From :	11/06/2018
Audit Date To :	11/06/2018
Expiry Date of the Audit :	Please refer to the producer profile in the amfori BSCI platform
Auditing Company :	TUEV NORD GROUP
Auditor's Name(s) :	Johnson Liu(Lead)
Auditing Branch (if applicable) :	



This is an extract of the on line Audit Report. The complete report is available in the amfori BSCI Platform. Access www.bsciplatform.org, for entitled users only.

All rights reserved. No part of the publication may be reproduced, translated, stored in a retrieval system, or transmitted, in any form or by any means electronic, mechanical, photocopying, recording or otherwise, be lent, hired, sold or otherwise circulated without the written consent.

This is an extract of the amfori BSCI Audit Report, which is available in the amfori BSCI Platform. © amfori, 2018 - The English version is the legally binding One.



www.bsciplatform.org

Page 1/17

Documented on 11/06/2018



ISO9001, BSCI, FDA

OUR PRODUCTS



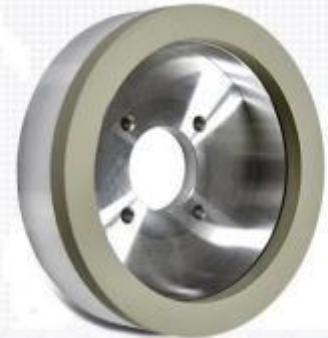
Metal bond



Resin bond



Electroplated



Vitrified bond

Advantaged of Diamond Grinding Tools

Longer life time

Lower temperate in grinding than abrasive tools

Fast removal

Fast grinding or cutting or polishing

Which Bonds?

Resin Bond Diamond&CBN grinding tools

Resin bonds are based on phenolic or polyimide resins, mixed with abrasive grains and other fillers, glued to the steel

or aluminum body. Due to their fast and cool grinding behavior, resin bonds are used in a wide range of application.

Metal(Sintered) Bond Diamond&CBN grinding tools

Metal bonds are based on bronze, which are relatively much more wear resistant. Metal bonds act harder than resin bonds and vitrified bonds, which grip the abrasive grains more strongly, leading to a long lifetime. Metal bonded grinding wheels normally work slower than resin bonded, harder but generate more heat during grinding compare

with resin bonded. Metal bonds are specialist on grinding sharp edge profiles and on machining abrasive materials. Metal bonds are mostly used in wet grinding, which generate heat but also readily dissipate heat during the processing.

Electroplated Bond Diamond&CBN grinding tools

Electroplated bonds are based on nickel coating on a supporting metal or aluminum body. The cutting and grinding of electroplated bonds is fast but not durable. The cost is lower and the shape is not limited, electroplated wheels are widely used in silicon, semiconductor materials, glass, ceramics and so on.

Vitrified Bond Diamond&CBN grinding tools

Vitrified bonds are based on fusible glasses and fillers and the abrasive grains. Vitrified bonds are available in different hardness levels by controlling its density.

Characteristics:

- Good dress ability and profile ability
- Self sharpening
- High cutting speeds
- High removal productivity

Cubic Boron Nitride(CBN) or Diamond?

CBN has the zinc-blende crystal structure equivalent to diamond, the hardness is a little below diamond. CBN has technological and economic advantages compare to diamond. The hardness of CBN work pieces is as low as 50 HRC but not brittle.

Diamond is the hardest material know now, with a Moh's harness of 10. Compare with CBN, diamond is used for grinding hard but brittle and short-chipping materials, such as tungsten carbide, glass, ceramics, quartz, graphite and so on.

- CBN grinding wheel for woodturning tools/bandsaw (P11-P16)
- Diamond tools for gemstone/lapidary (P17-P27)
- Vitrified bond diamond grinding wheel for PCD&PCBN tools (P28-P32)
- Resin bond Diamond and CBN grinding wheels (P33-P50)
- Dental diamond milling burs (P51-P64)
- Diamond microdermabrasion tips&wands (P65-P70)

CBN

CBN grinding wheels
for woodturning tools



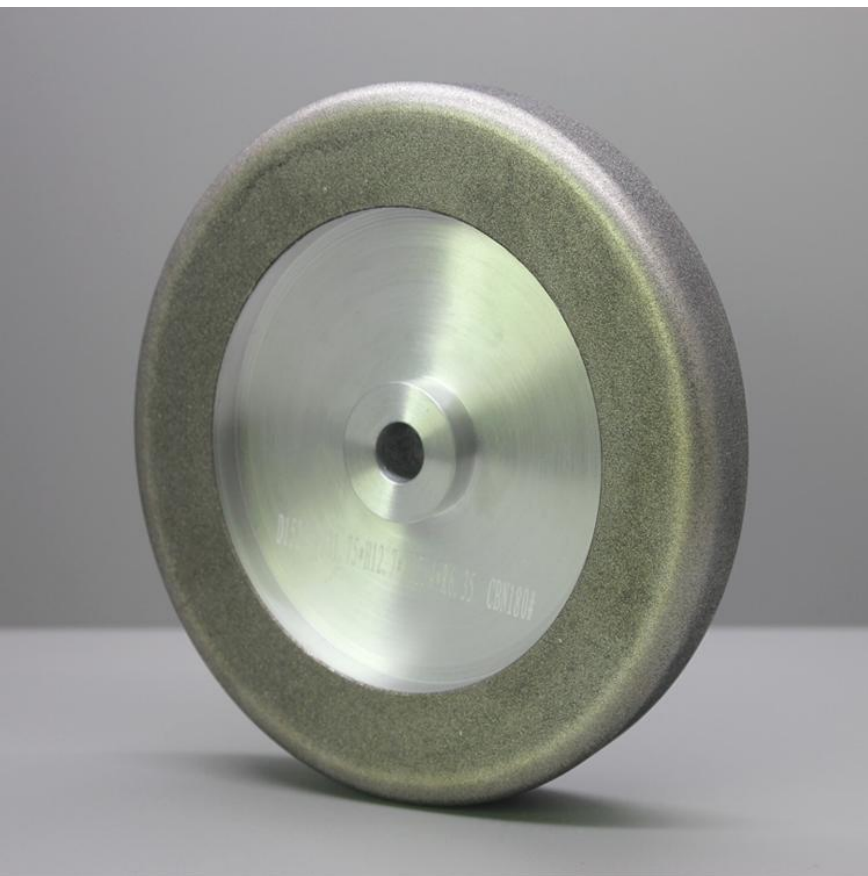
Used for high vanadium steel, ball-bearing steel (SUJ), heat-resisting steels(SUH),titanium alloy, nickel-chromium-iron alloy, cast iron(FC), SCM, SNCM, SCr, magnetic material etc.

Features:

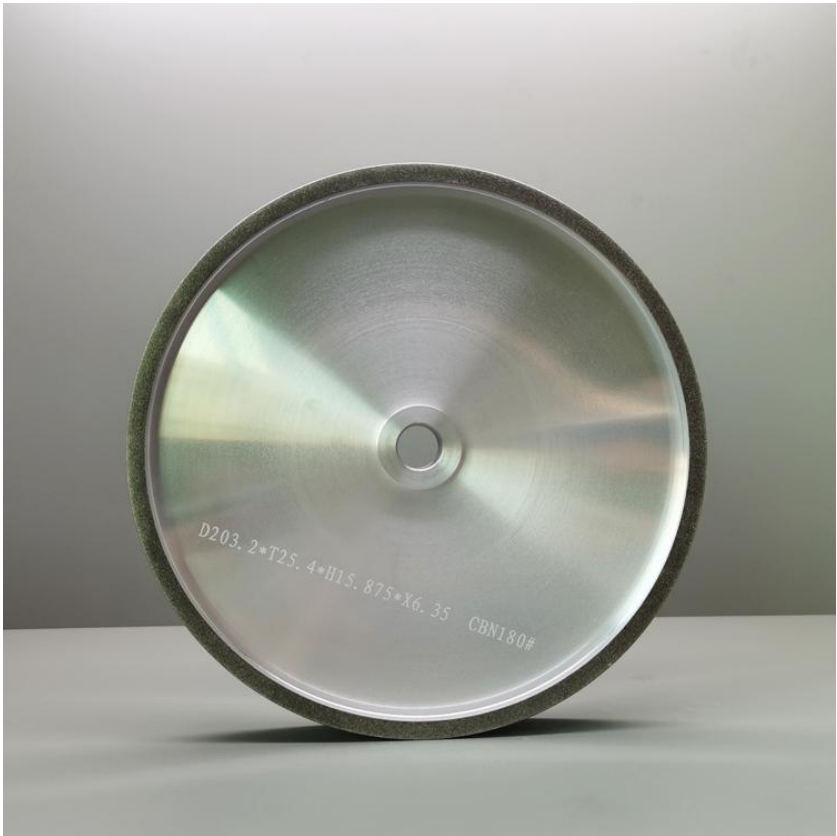
1. These wheels are designed for use with bench-type grinders. 1800 rpm or 3600 rpm.
2. Produces a superbly sharp cutting edge
3. Fine finish on tool bevel
4. Fast, cool cutting action without coolant
4. Side surface for flat grinds on skews, scraper cutters and tool bits
6. No dressing or shaping required
7. Wheel stays flat, never changes shape
8. Steel and 6061 aluminum for choice



D	T	H	X	R
6 inch	1 inch	1/2inch, 5/8inch, 3/4inch	1/4inch	1/4inch
6 inch	1 1/2inch		1/4inch	1/4inch
7 inch	1 1/2inch		1/4inch	1/4inch
8 inch	1 1/2inch		1/4inch	1/4inch
Regular grit	60 grit, 80 grit, 180 grit, 220 grit, 350 grit, 600 grit, 800 grit, 1000 grit, 1200 grit			



D	T	H	X	R
6 inch	1 1/4inch	1/2inch, 5/8inch, 3/4inch 12mm	1 inch	1/4inch
7inch	1 1/4inch			
8inch	1 1/4inch			
Regular grit	60 grit, 80 grit, 180 grit, 220 grit, 350 grit, 600 grit, 800 grit, 1000 grit, 1200 grit			



D	T	H	X
6 inch	1 inch	5/8 inch	1/4 inch
8 inch	1 inch	5/8 inch	1/4 inch
8 inch	1 1/2 inch	5/8 inch	1/4 inch
Regular grit	60 grit, 80 grit, 180 grit, 220 grit, 350 grit, 600 grit, 800 grit, 1000 grit, 1200 grit		



D	T	H	
8 inch	1 1/2 inch	5/8 inch	Mega square
10 inch	2 inch	12 mm 12.04mm	
Regular grit	60 grit, 80 grit, 180 grit, 220 grit, 350 grit, 600 grit, 800 grit, 1000 grit, 1200 grit		



D	T	H	X	
8 inch	1 1/2 inch	5/8 inch	1 inch	Mega square
10 inch	2 inch	12 mm	1 inch	
Regular grit	60 grit, 80 grit, 180 grit, 220 grit, 350 grit, 600 grit, 800 grit, 1000 grit, 1200 grit			

CBN grinding wheel for bandsaw blade



Type	Machine type	D	H	T
CBN grinding wheel	Fenes, Ro-Ma	127	12.7	22.2
		150	20	22.2
		203	32	22.2
	Sword	127	12.7	9
	Wood-Mizer 10/30	127	12.7	22.2
		150	20	22.2
		203	25.4	22.2
		203	32	22.2
	Wood-Mizer 9/29	127	12.7	22.2
		203	25.4	22.2
		203	32	22.2
Other model	WM 10/30, WM 13/29, WM 12/28, WM 9/29, WM 6/30, WM 7/39.5, Lenox 10/30			

DIAMOND — GEMSTONE

**Diamond grinding wheel
for natural diamond/gemstone**



Lapidary/gemstone polishing and grinding

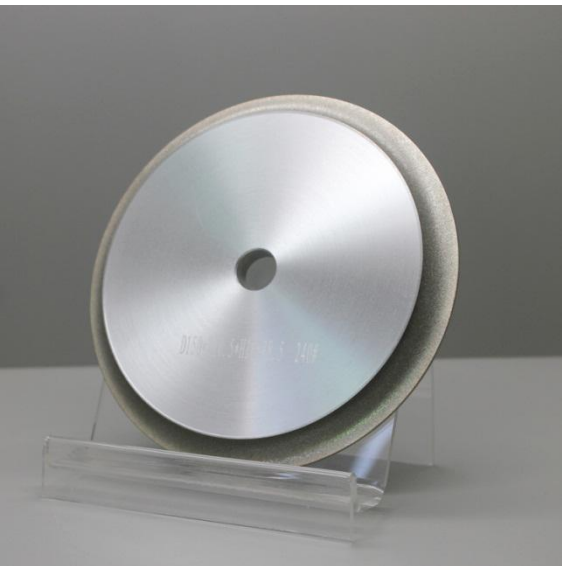
Feature:

1. Sharp. Fast grinding and fast sharpening your tools
2. Long life. Much longer life than traditional abrasive wheels
3. Well balanced each wheels.

Electroplated diamond grinding wheel



D(mm)	T(mm)	H(mm)
150	25.4	25.4
150	31.75	25.4
150	38.1	25.4
150	50.8	25.4
200	25.4	25.4
200	31.75	25.4
200	38.1	25.4
200	50.8	25.4
Grit: 60# to 1200#		
Other size can be customized		



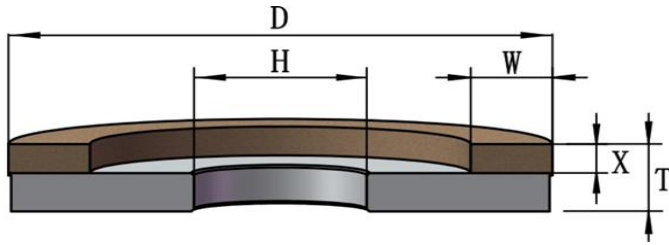
D(mm)	T(mm)	H(mm)	R
150	3.8	16	2
150	4.3	16	2.5
150	4.8	16	3
150	5.3	16	3.5
150	6	16	4
150	6.5	16	4.5
150	7	16	5
150	8	16	6
150	8.5	16	6.5
150	9	16	7
150	10	16	8
150	11	16	9
Other size can be customized			

Electroplated diamond grinding disc



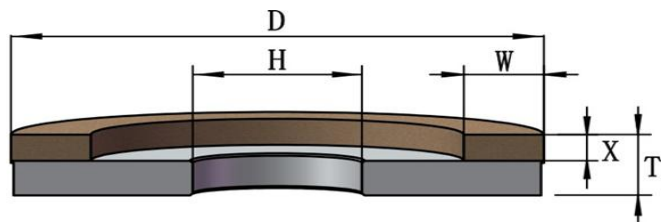
D(mm)	T(mm)	H(mm)
150	1.0	12.7
200	1.0	12.7
250	1.0	12.7
300	1.0	12.7
350	1.0	12.7
400	1.0	12.7
450	1.0	12.7
Grit: 60# to 1200#		
Other size can be customized		

Resin bond diamond grinding wheel



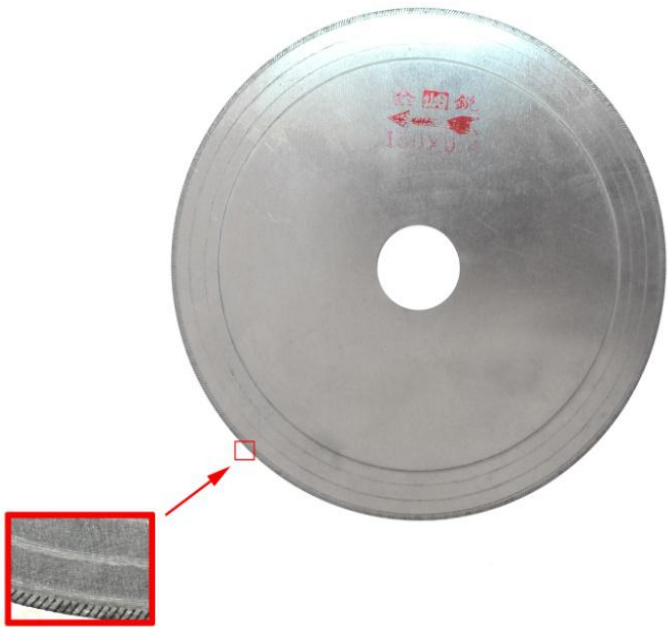
D(mm)	T(mm)	H(mm)	W(mm)	X(mm)
150	10/12	12.7	25.5	7
150	14/17	12.7, 27, 30	50	5
200	17, 21	12.7, 27	40	5, 6
200	27	27, 30	50	5, 6
200	17, 21	27, 30	65	5, 6
200	17, 21	27	75	6
250	35	15	110	6
328	25	50	82	5.5
600	46	35	230	6, 8
Grit: 60 mesh to 2 um				
Other size can be customized				

Metal bond diamond grinding wheel



D(mm)	T(mm)	H(mm)	W(mm)	X(mm)
150	20	12.7	50.8	5
200	22	32	40	3
200	27	27, 30	50	5, 6
Grit: 60 mesh to 2 um				
Other size can be customized				

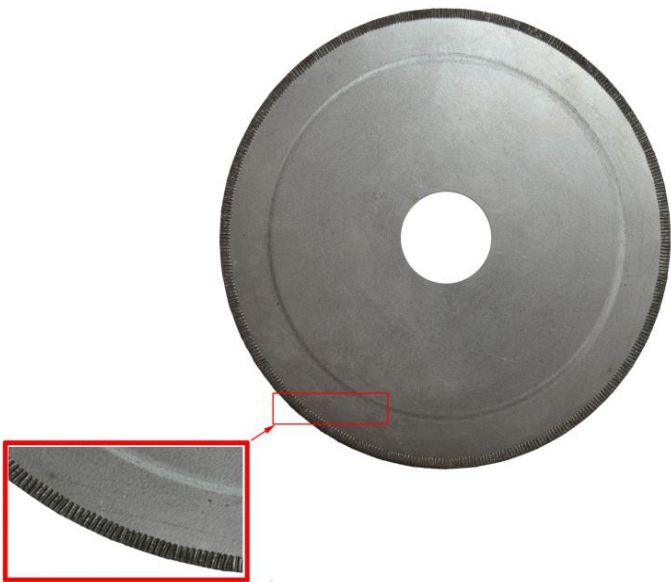
Oblique tooth saw blade



D(mm)	T(mm)	H(mm)
80	0.3	20
100	0.3, 0.4, 0.5	20
110	0.4, 0.5	20
120	0.3, 0.5	20
150	0.3, 0.4, 0.5	20, 25
200	0.3, 0.5	25
250	0.3, 0.5	25

Other size can be customized

Straight tooth saw blade



D(mm)	T(mm)	H(mm)
150	0.5, 0.8	25
200	0.8, 1.0	25
250	0.8, 1.0, 1.2, 1.5	25
300	1.0, 1.2, 1.5	25
350	1.2, 1.5	25
400	1.2, 1.5	32
450	1.2, 1.5	32
500	1.2, 1.5	32
550	1.5	32
600	1.5, 2.0	32
Other size can be customized		

Toothless saw blade



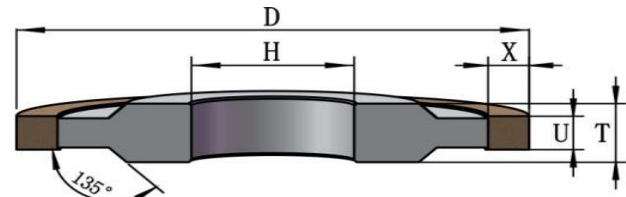
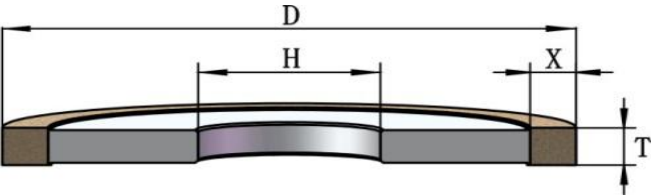
D(mm)	T(mm)	H(mm)
150	0.3, 0.5	25
160	0.8	25
200	0.8, 0.9, 1.0	25, 25.4
250	1.0, 1.2	25, 25.4
300	1.2	25
350	1.2	25
Other size can be customized		

Super thin electroplated diamond saw blade



D(mm)	T(mm)	H(mm)
100	0.1	20
Other size can be customized		

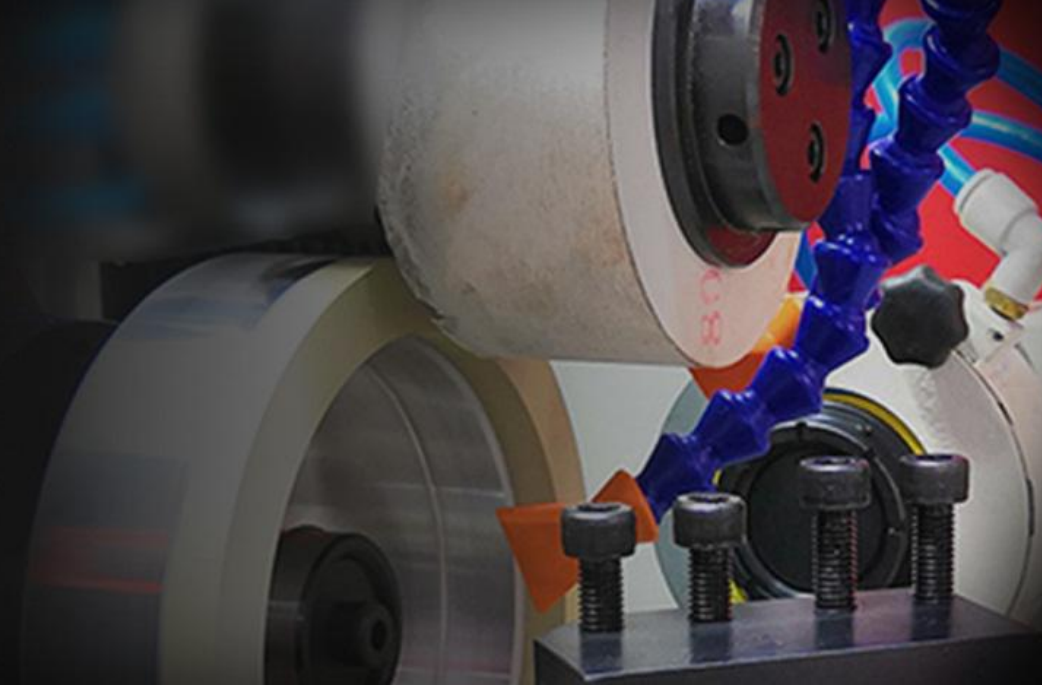
Vitrified bond diamond grinding wheel for diamonds



Size(D)*(T)*(H)*(X)	Concentration	Grit Size			Bond Materials
170*8*32*14	75%, 100%, 125%, 150%	MD20	MD40/60	MD80	Vitrified bond
170*10/12*32*14/15					
175*5*32*10					
175*5*32*15					
175*10*32*10					
175*10*32*15					
220*10*32*20					
As per your size					

PCD

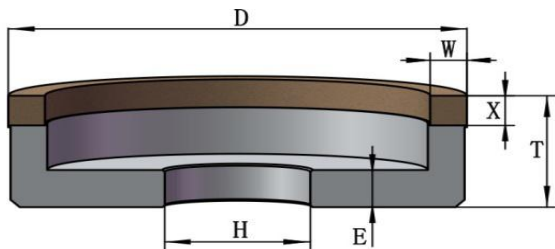
Vitrified bond diamond grinding wheel
for PCD & PCBN



Vitrified bond grinding wheels for PCD and PCBN tools

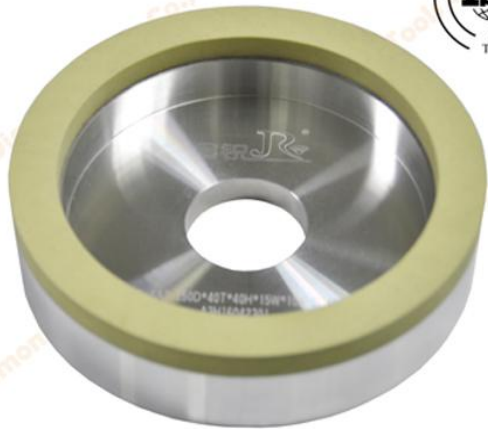
Feature:

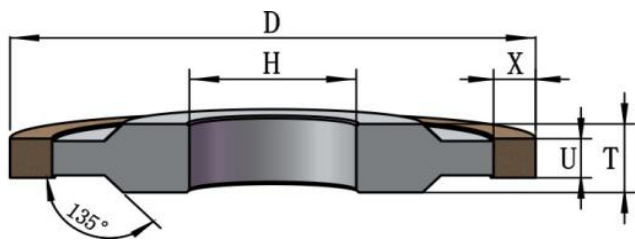
1. High durability and good shape retention: its durability is 2-3 times to the resin grinding wheel under the same grinding conditions. It has strong bonding force and uniform wear, and the shape of grinding wheels is not easy to change;
2. Good sharpness: its grinding efficiency is about 2 times that of the resin grinding wheel;
3. Good trimming property: the same trimming property as conventional ceramic corundum and silicon carbide grinding wheel;
4. It is superior to the grinding wheel with a particle size of 0-5 μ m for superfine grinding;
5. The comprehensive cost can be reduced by 20%-30% compared with resin grinding wheel.



Shape	D	T	H	W	X
6A2	100	40	20/32/40	3/5/10/15	10
	125	40	40	5/8/10/15	10
	150	40	40	3/5/10/15/ 20	10

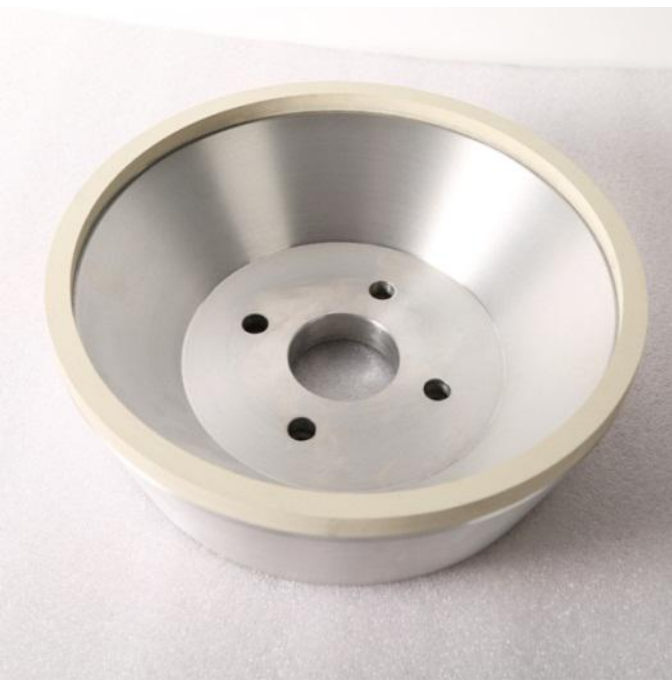
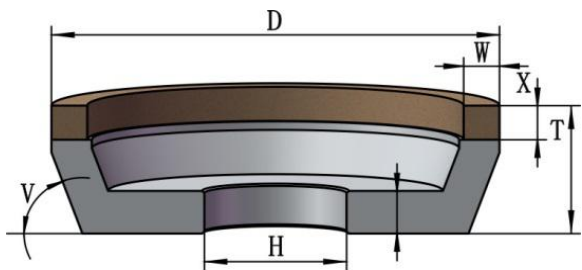
Regular grit
SD3000,W3.5 W5 W10 W20 W28 W40 325/400. Other size
can be customized.





Shape	D	T	H	U	X
14A1	75	6-15	20, 31.75	0.5-10	6
	100	6-15	20, 31.75	0.5-10	6
	125	6-15	20, 31.75	0.5-10	6
	150	6-15	20, 31.75	0.5-10	6, 10
	350	20	127	10	10
	350	22	127	10	10

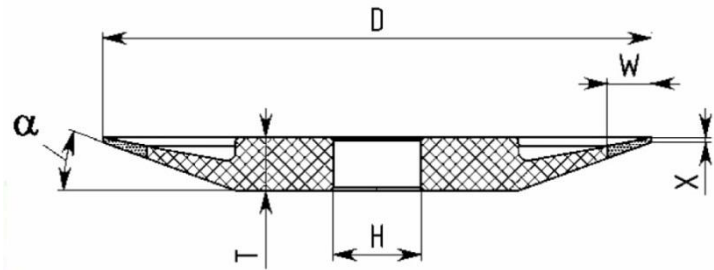
Grit: D10, D20, Other size can be customized.



Shape	D	T	H	W	X
11A2	250	70	50	10	10

Other size can be customized.

Grit :D10, D20, Other size can be customized.



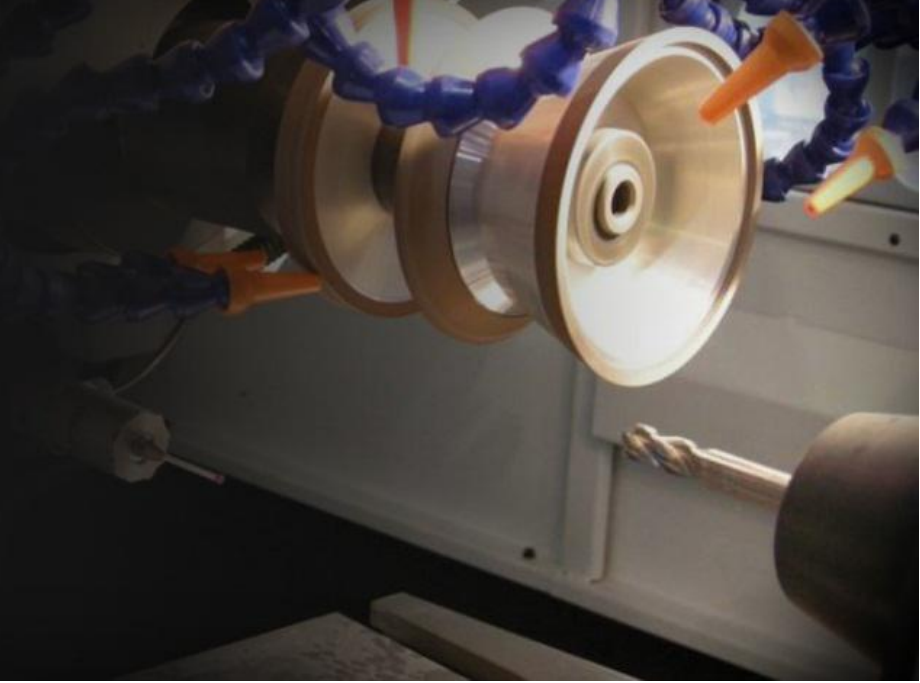
Shape	D	T	H	W	X
B4BT9	200	25	32	10	7.28

Other size can be customized.

Grit :D10, D20, Other size can be customized.

CNC

CNC grinding wheel for the manufacture of drills
reamers and endmills

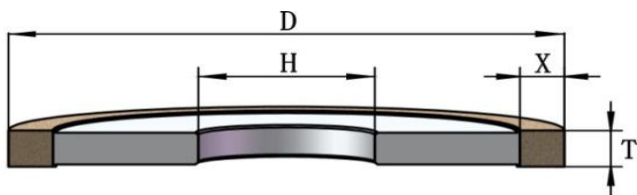


Resin bond Diamond and CBN grinding wheels:

Used for PCD, PCBN inserts, carbide inserts, CNC tools such as solid carbide, high speed steel, stainless steel drills, milling cutters and reamers etc.

Feature:

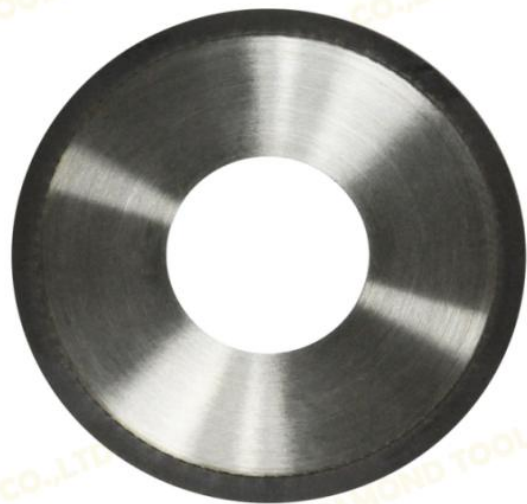
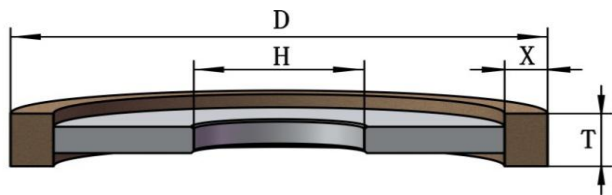
1. Good profile precision and perfect processing quality;
2. High-efficiency grinding for rapid feed and high material removal efficiency;
3. Good wear resistance and shape retention, long dressing cycle and good cutting edge quality of workpieces.



Type	D	T	H	X
1A1	50	5-20	10	6
1A1	60	5-10	10,16	6.5
1A1	75	3, 10	20, 31.75	5
1A1	100	10, 12, 15	20,31.75	5
1A1	125	5, 6, 8, 10, 12	20,31.75	10, 15
1A1	150/200/250	3, 6, 12	20, 32	6, 10
1A1	300/400/500/600/700	10, 20, 25, 30, 40, 50	76/127/203.2/304.8	10

Grit: D10, D15, D20, D25, D30, D35, D40, D46, D54, D64, D76, D91.

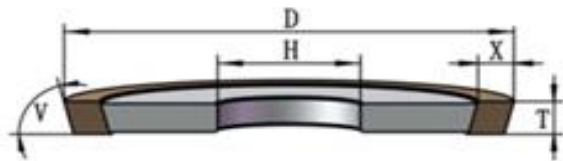
Other size can be customized.



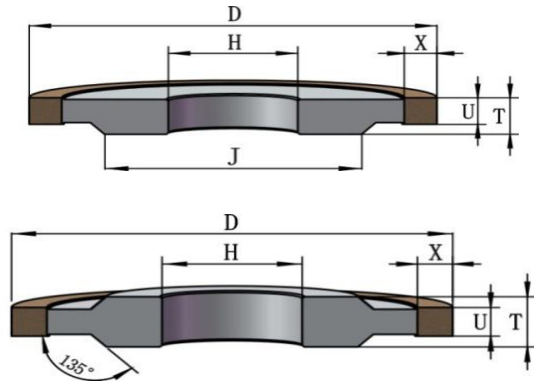
Type	D	T	H	X
1A1R	100	1.0	20/32	6
1A1R	125	1.0,1.5	20/32	6
1A1R	150	1.0,1.5	19.05/20 /32	6,10, 15
1A1R	200	1.0/1.2	20/ 32	6, 10

Grit: D46, D54, D64, D76, D91.

Other size can be customized.



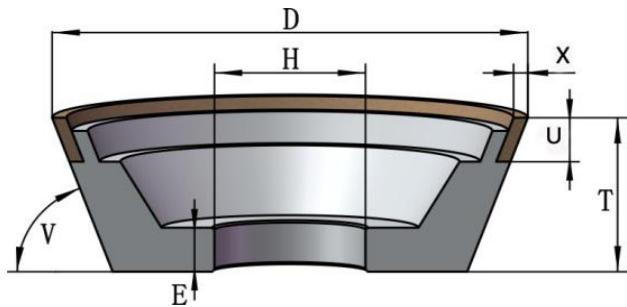
Type	D	T	H	X
1V1	75	10	20	5
1V1	100	10, 15	20,31.75	5
1V1	125	6, 10, 15	20,31.75	5, 10
1V1	150	12	20, 32	6, 10
Grit: D10, D15, D20, D25, D30, D35, D40, D46, D54, D64, D76, D91.				
Other size can be customized.				



Type	D	T	H	U	X
3A1, 14A1	75	6-10	20,31.75	1.5, 2, 3,4, 6	6
3A1, 14A1	100	6-15	20,31.75	1.5, 2, 3,4, 6	6
3A1, 14A1	125	6-15	20,31.75	1.5, 2, 3,4, 6	6
3A1, 14A1	150	6-20	20, 32	1.5, 2, 3,4, 6	6, 10

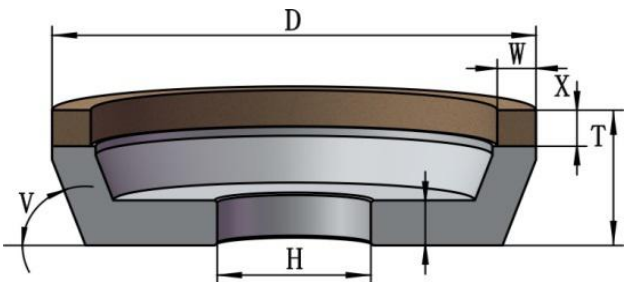
Grit: D10, D15, D20, D25, D30, D35, D40, D46, D54, D64, D76, D91.

Other size can be customized.

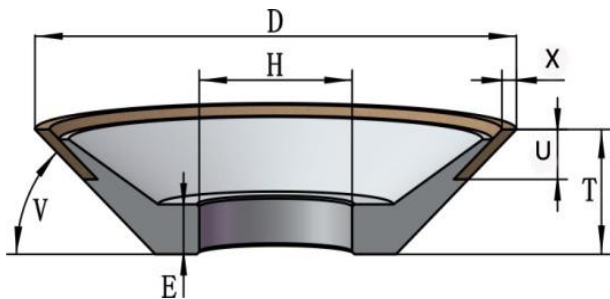


Type	D	T	H	U	X
11V9	75	30	20,31.7 5	3,6	3
11V9	100	35	20,31.7 5	6,10	3
11V9	125	35	20,31.7 5	6,10	3
11V9	150	35,40	20,31.7 5	6,10	3

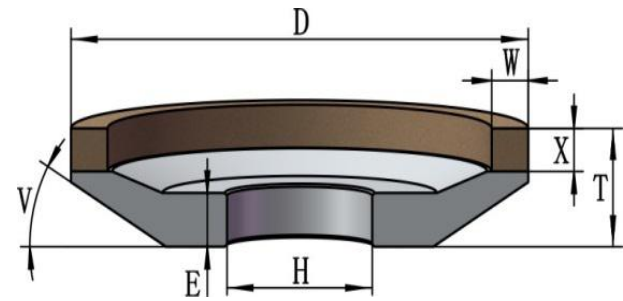
Grit: D10, D15, D20, D25, D30, D35, D40, D46, D54, D64, D76, D91.



Type	D(mm)	T(mm)	H(mm)	W(mm)	X(mm)
11A2	50	10-15	14/15/ 16	6	6
	60	10-15	16/17	6	6
	125	10-15	31.75	6/10	6
	150	10-15	31.75	6/10	6
	200	10-20	31.75	6/10	6
	Grit: 80 mesh to 300mesh				
	Other size can be customized				

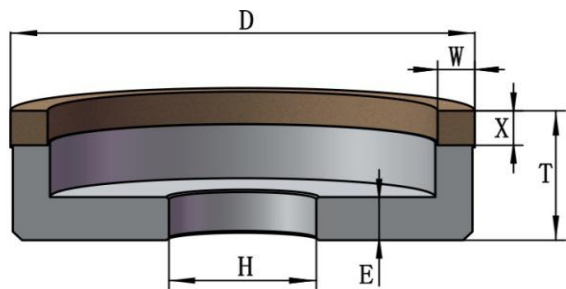


Type	D	T	H	U	X	V
12V9	75	25	20,31.7 5	3,6,10	6,10	45 degree
12V9	100	20, 25	20,31.7 5	3,6,10	6,10 10	45 degree
12V9	125	25,40	20,31.7 5	3,6,10	6,10	45 degree
12V9	150	13,25, 30	31.75	3,6,10	6,10	20/45 degree
Grit: D10, D15, D20, D25, D30, D35, D40, D46, D54, D64, D76, D91						

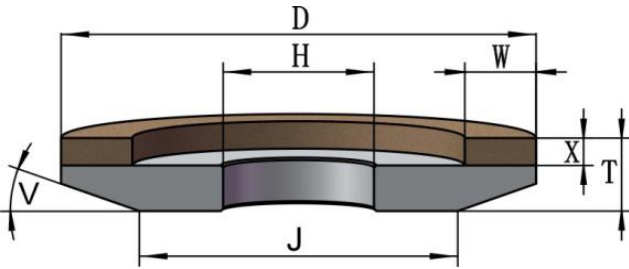


Type	D	T	H	W	X
12A2	75	20-25	20,31.75	3/6/10	5-10
12A2	100	15-35	20,31.75	3/6/10	5-10
12A2	125	20-35	20,31.75	3/6/10	10
12A2	250	20-35	31.75	3/6/10	10

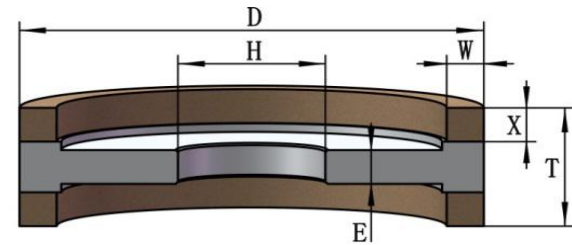
Grit: D10, D15, D20, D25, D30, D35, D40, D46, D54, D64, D76, D91



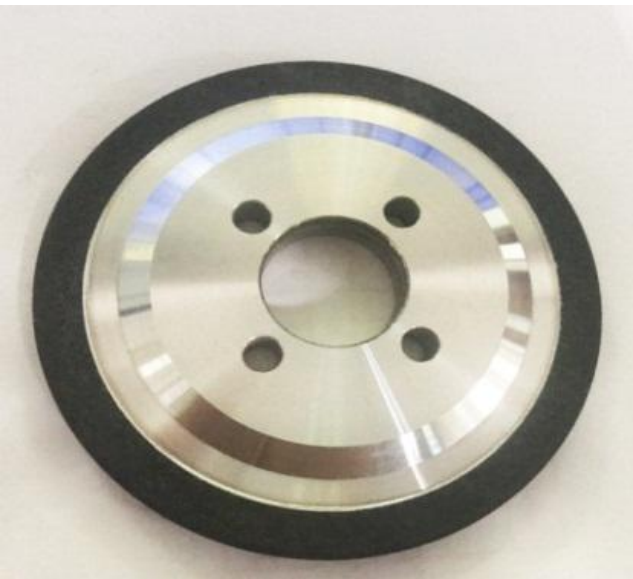
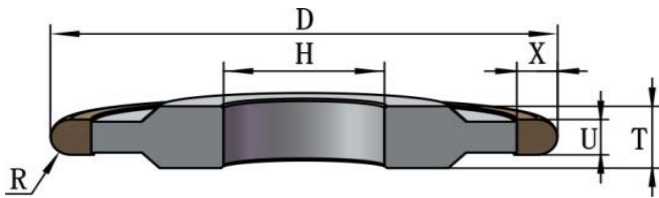
Type	D	T	H	W	X
6A2	60	20	20	6.5	6/10
	75	25	20	3//5/6/1 0	3/5/10
	80	25	20,31.75	6/10	3/5/10
	100	30	20,31.75	6/10	5/10
	125	32	20,31.75	3/6/10	5/10
	150	35	20,31.75	3/6/10	5/10
	200	35	20,31.75	3/6/10/1 5	5/10
Grit: D10, D15, D20, D25, D30, D35, D40, D46, D54, D64, D76, D91 Other size can be customized.					



Type	D	T	H	W	X
4A2	50	11	16	6	2/3/4/5/6
	100	10	20,31.75	6/10	2/3/4/5/6
	125	10	20,31.75	3/6/10	2/3/4/5/6
	150	10	20,31.75	3/6/10	2/3/4/5/6
	200		20,31.75	3/6/10/15	2/3/4/5/6
Grit: D10, D15, D20, D25, D30, D35, D40, D46, D54, D64, D76, D91 Other size can be customized.					

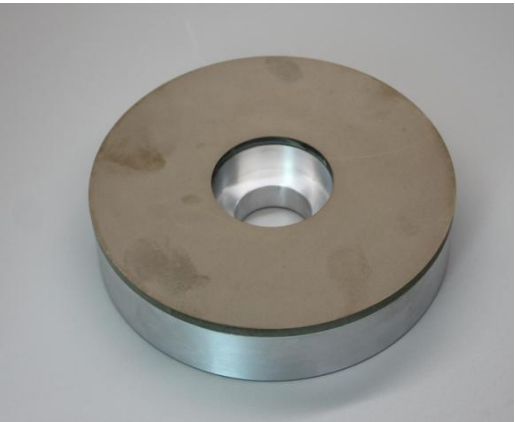
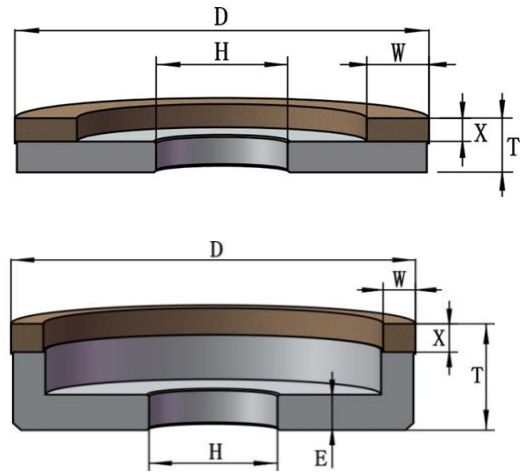


Type	D(mm)	T(mm)	H(mm)	W(mm)	X(mm)
9A3	50	10-15	14/15/ 16	6	2-4
	60	10-15	16/17	6	2-4
	125	10-15	31.75	6,10	2-4
	150	10-15	31.75	6,10	2-4
	175	10-15	31.75	10	2-4
	200	10-20	31.75	6/10	2-4
Grit: 80 mesh to 300mesh					
Other size can be customized					

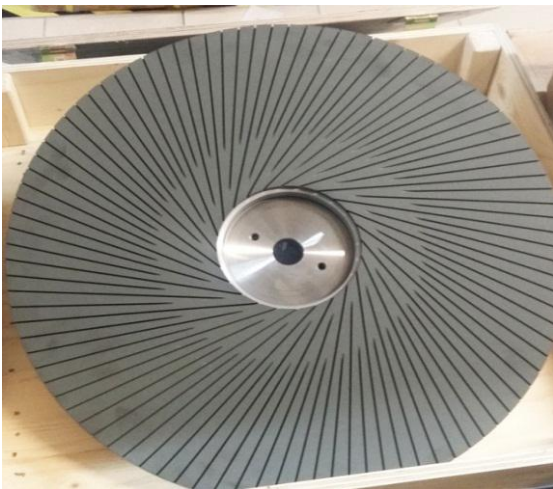
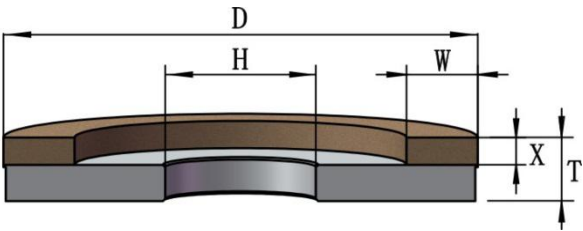


Type	D(mm)	T(mm)	H(mm)	U(mm)	X(mm)
14F1	50	8-15	14/15/ 16	4	6
	60	10-15	16/17	4	6
	100	10-15	20	4	6,10
	125	10-15	31.75	6/10	6,10
	150	10-15	31.75	6/10	6,10
	200	10-20	31.75	6/10	6,10
Grit: 80 mesh to 300mesh					
Other size can be customized					

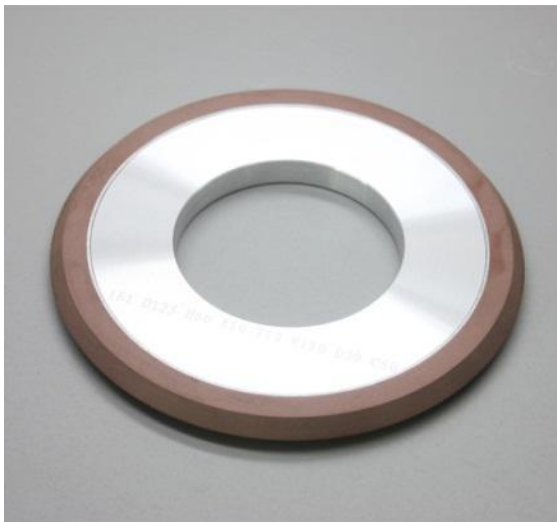
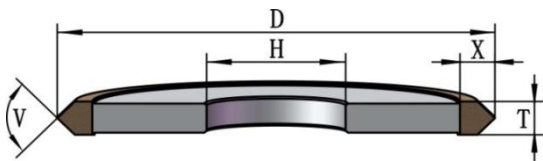
Grinding wheel for sharpening scissors



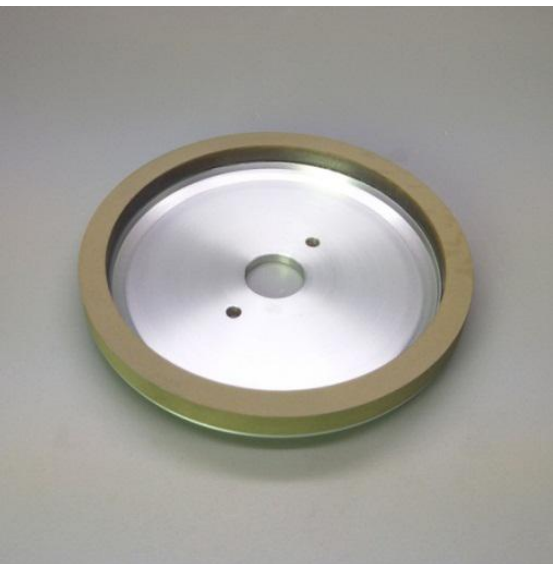
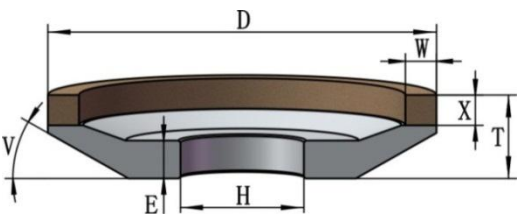
Type	D	T	H	W	X
1A2/6A2	150	35	32	50	5
1A2/6A2	200	35	32	50	5
1A2/6A2	200	35	32	75	5
Grit: D10, D15, D20, D25, D30, D35, D40, D46, D54, D64, D76, D91 etc					



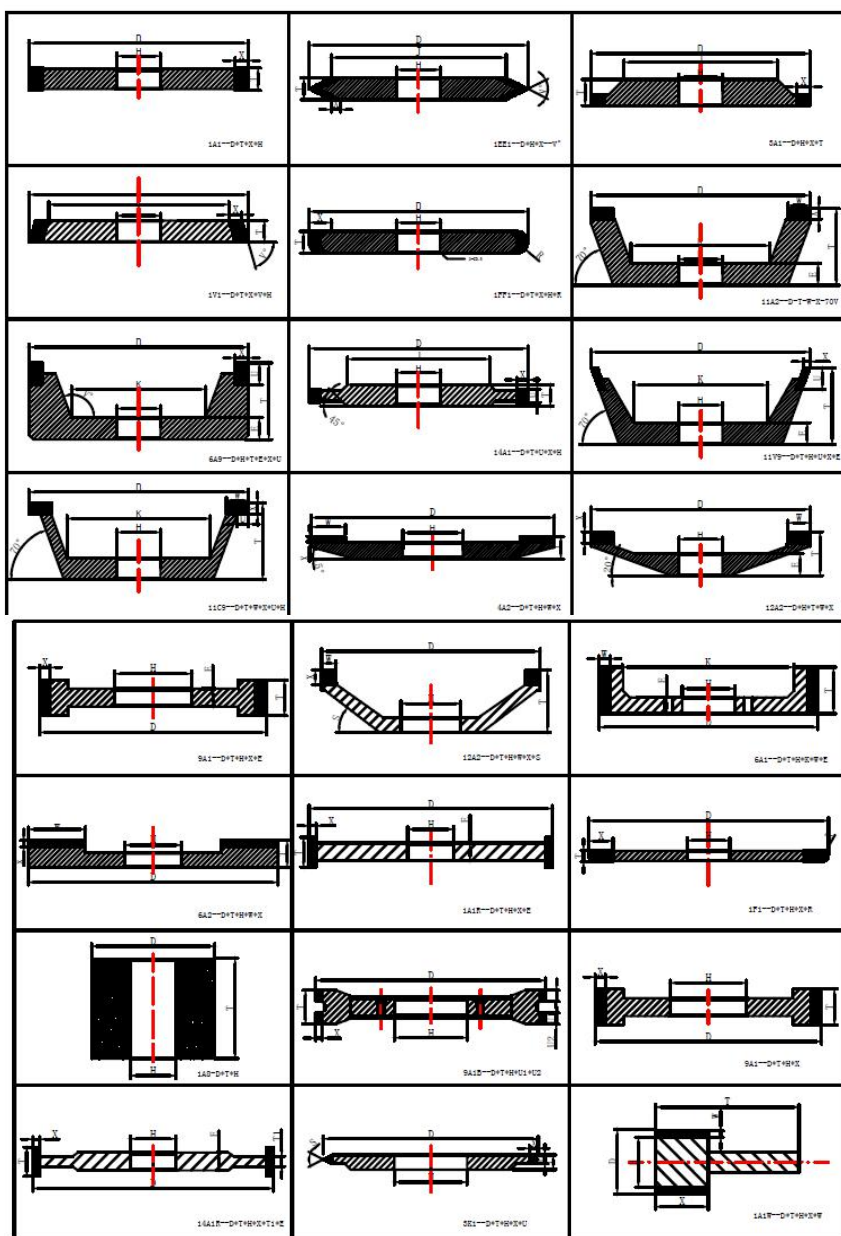
Shape	D	T	H	W	X
1A2	600	48	35	230	6/8
Grti: D15, D39 etc					



Shape	D	T	H	X	V
1E1	120	10	60	10	110
Grti: D15, D39 etc					

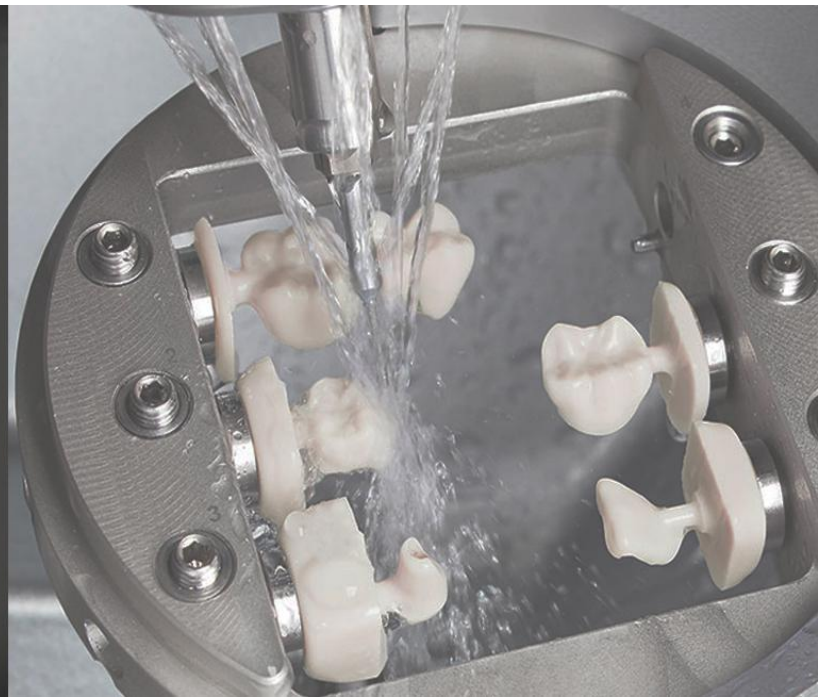


Shape	D	T	H	W	X	V
12A2	150	20	24	5	5	26
	150	20	24	10	10	26
	120	25	24	10	10	26
Grti: D252, D181, D151 , D64, D54, D46, D39 , D15/30 etc						



Diamond

Diamond burs for dental instruments



Features:

1. High-grade tungsten steel shank, high strength, no rusty. (more easily transferred out the grinding heat, and reduce the wear of the burs.)
2. Grinding head is made of synthetic diamond powder. high hardness and wear resistance.
3. Excellent for fine detail work, cutting, engraving, carving, touch-up and finishing, engraving, and shaping with precision and detail.

Dental diamond milling burs



	Coating diameter(mm)	Coating length(mm)	Shank diameter (mm)	Overall length(mm)
ARUM	2.5	13.75	4	45
	1.5	10	4	45
	1.0	10	4	45
	0.6	8.5	4	45
	Other size can be customized.			



	Coating diameter(mm)	Coating length(mm)	Shank diameter (mm)	Overall length(mm)
Roland	2.5	15	3	40
	1.5/0.6	9.3	3	40
	1.0	6	3	40
	Other size can be customized.			



	Coating diameter(mm)	Coating length(mm)	Shank diameter (mm)	Overall length(mm)
VHF	0.6	8.6	3	35
	1.0	8.6	3	35
	2.0	15.9	3	35
	Other size can be customized.			



	Coating diameter(mm)	Coating length(mm)	Shank diameter (mm)	Overall length(mm)
Sirona-MCX5	2.2	15.46	3	37.4
	1.2	12.5	3	36.4
	1.4	14.43	3	35.4
	Other size can be customized.			



	Coating diameter(mm)	Coating length(mm)	Shank diameter (mm)	Overall length(mm)
Imes-icoer 250i	2.5	14.4	3	42
	1.0	10.13	3	43
	0.6	9.93	3	43
	Other size can be customized.			



	Coating diameter(mm)	Coating length(mm)	Shank diameter (mm)	Overall length(mm)
Imes-icoer 350i	2.5	14.8	6	40
	1.0	10.2	6	40
	0.6	10	6	40
	Other size can be customized.			



Amann Girrbach	Coating diameter(mm)	Coating length(mm)	Shank diameter (mm)	Overall length(mm)
	1.8	14	3	43
	1.4	14	3	43
	1.0	13.65	3	43
	0.4	6.3	3	43
	Other size can be customized.			



XTCERA 300/400	Coating diameter(mm)	Coating length(mm)	Shank diameter (mm)	Overall length(mm)
	2.5	16	3	45
	1.0	10	3	45
	0.6	12	3	45
	Other size can be customized.			



AIM	Coating diameter(mm)	Coating length(mm)	Shank diameter (mm)	Overall length(mm)
	2.0	14.71	4	38
	1.0	10	4	34
	0.5	2.37	4	36
	Other size can be customized.			



Dentium	Coating diameter(mm)	Coating length(mm)	Shank diameter (mm)	Overall length(mm)
	0.6	19.8	6	50
	1.0	19.8	6	50
	2.0	19.8	6	50
	Other size can be customized.			



	Coating diameter(mm)	Coating length(mm)	Shank diameter (mm)	Overall length(mm)
Linggong	0.6	10	4	45
	1.0	10	4	45
	2.5	16	4	45
	Other size can be customized.			



Jiansan	Coating diameter(mm)	Coating length(mm)	Shank diameter (mm)	Overall length(mm)
	2.5	16.93	6	50
	2.0	16.93	6	50
	1.0	12.92	6	50
	Other size can be customized.			



Specification	Cutting Effect Length	Shank diameter	Overall length
Cylinder Point 12S	13.7	M3.5	38
Step Bur 12S	13.7	M3.5	38
Step Bur 12	13.23	M3.5	38
Trapezoid Step 20	21.54	M3.5	46
Cylinder Step 20	22	M3.5	46.3

Microdermabrasion

Diamond tips and wands



Standard/customized diamond microdermabrasion tips unit

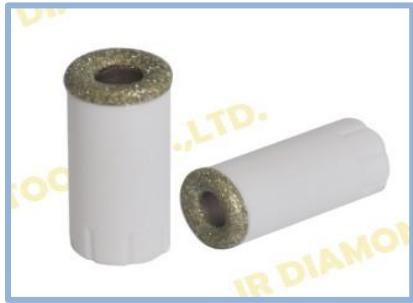
Diamond microdermabrasion tips and wands

JR Item No.	Diameter of working area	Diamond Grit	Working Area	Product Photo	Unit	Net Weight (gram)
WD001	6 MM	D-200	For nasal area		piece	7.00
WD002	8MM	D-150	For eyes, oil tablets, blackheads and acne		piece	7.50
WD00301	14.5 MM	D-100	For scars, fine lines and imperfections		piece	8.10
WD00302	14.5MM	D-150			piece	8.10
WD00303	14.5MM	D-200			piece	8.10
WD00401	18.5MM	D-75	For heavy dead skin build-up on a larger area		piece	13.20
WD00402	18.5MM	D-150			piece	13.20
WD00501	23MM	D-75	For larger facial area or body areas like elbows, knees		piece	16.20
WD00502	23MM	D-150			piece	16.20

JR Item No.	Product	Material	Product Photo	Unit	Net Weight (gram)
WD006	Diamond dermabrasion wand	Aluminum		piece	23.10
WD007	Diamond dermabrasion wand	Stainless steel		piece	66.00
WD008	Diamond dermabrasion wand	Stainless steel		piece	80.00
WD00701	Diamond dermabrasion wand with diamond	Stainless steel		piece	75.00

JR Item No.	Specification	Product Photo	Unit	Net Weight (gram)	Packing Size(mm)
WD017	Including 9 tips 10pcs free filters for each set		set	184.60	160*100*40
WD009	Including 9 tips and 3 aluminum wands 10pcs free filters for each set		set	331.50	160*100*40 2 boxes
WD010	Including 9 tips and 3 stainless steel wands 10pcs free filters for each set		set	452.00	160*100*40 2 boxes
WD016	Including 9 tips and 1 aluminum wand 10pcs free filters for each set		set	215.00	160*100*40
WD018	Including 9 tips and 1 stainless steel wand 10pcs free filters for each set		set	255.00	160*100*40

JR Item No.	Specification	Product Photo	Unit	Net Weight (gram)	Packing Size(mm)
WD011	Including 9 tips and 3 aluminum steel wands 10pcs free filters for each set		set	452.00	201*143*36
WD012	Including 9 tips and 3 stainless steel wands 10pcs free filters for each set		set	468.50	201*143*36
WD013	Including 9 tips and 2 aluminum wands 10pcs free filters for each set		set	400.00	243*105*35
WD014	Including 9 tips and 2 stainless steel wands 10pcs free filters for each set		set	40.00	243*105*35
WD019	Including 3 aluminum wands		set	200.00	160*100*40
WD020	Including 3 stainless steel wands		set	320.00	160*100*40



Special - shaped Tips

R&D team

Director--- Mr. Song: specializing in diamond tools industry over 40 years, has professional experience of technology and management.



Members:

Mr. Li: an expert to advise on new technology, helping us improve and provide solutions for clients' cases. He worked at a company(that is a famous brand of diamond tools industry in the world) before over many years.

Mr. Tang: 25 years' experience in resin, 10 years' experience in vitrified bond diamond and CBN grinding wheels.

Mr. Wang: 20 years' experience in electroplated diamond and CBN grinding wheels.

Mr. Luo: 10years' experience in CNC and general lathes machines.

Mr. Lin: CAD draftsman

Product process



CNC workshop: producing the bases of grinding wheel.

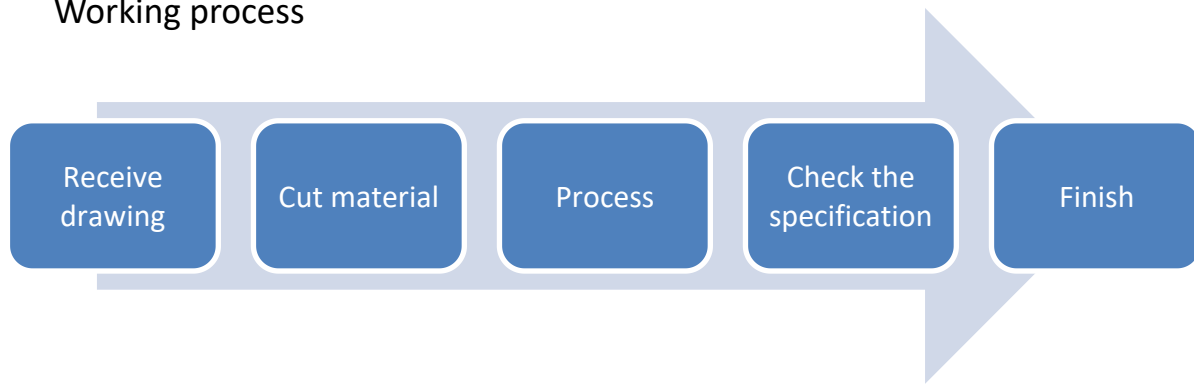
More than 30 professional engineers to ensure stable delivery time.

Continuous training programs keep our engineers in tune with new technology and the current demand.

For each step, our scrupulous engineers execute with precision.
(the base size, diamond /CBN working layer size and a whole size of grinding wheel after dressing.)



Working process





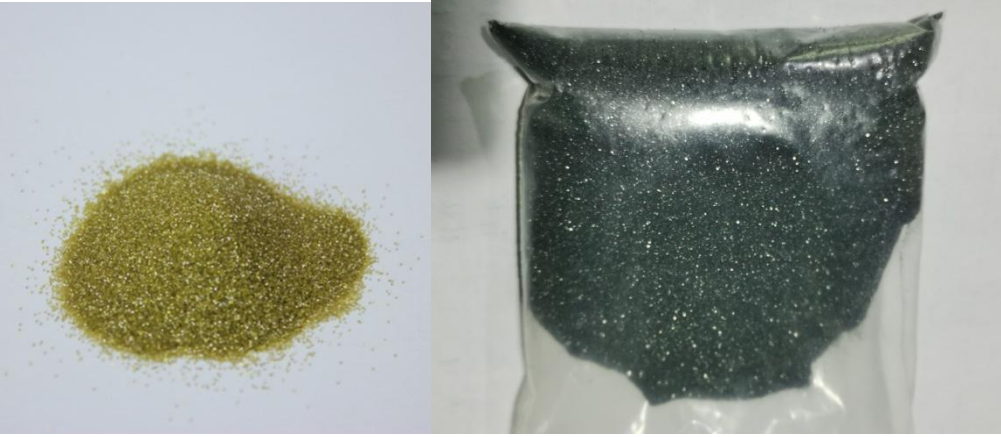
Base Material Choice

The steel is used for diamond powder electroplated bases.
The Aluminum is used for electroplated bases and vitrified bond grinding wheels.

All materials are from renowned companies.

Since the weight of steel base is heavier, more and more customers would like to change aluminum base instead of steel to save the shipping cost.



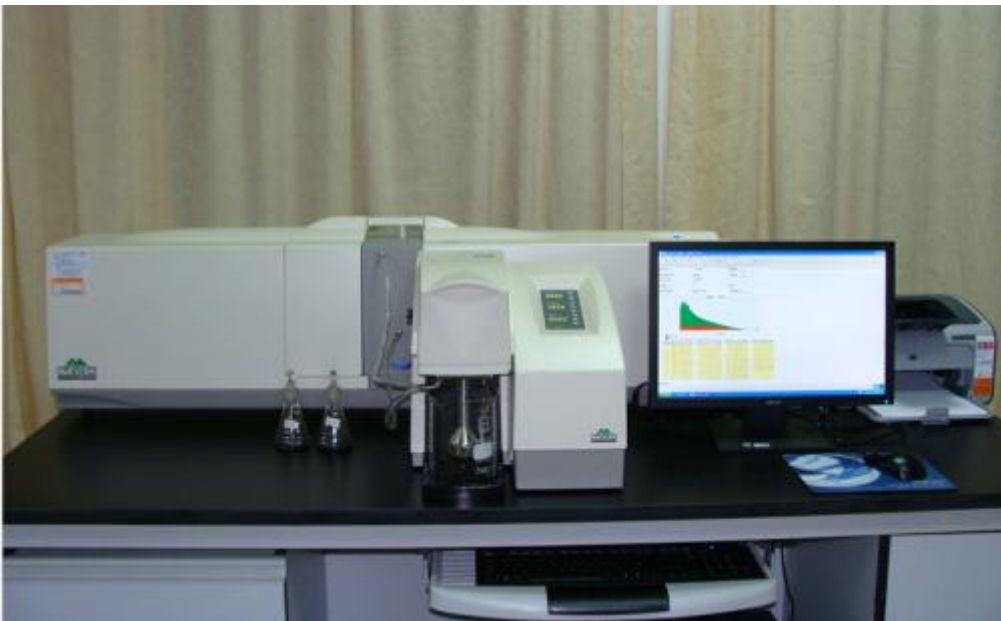


Particle Size Analyzers

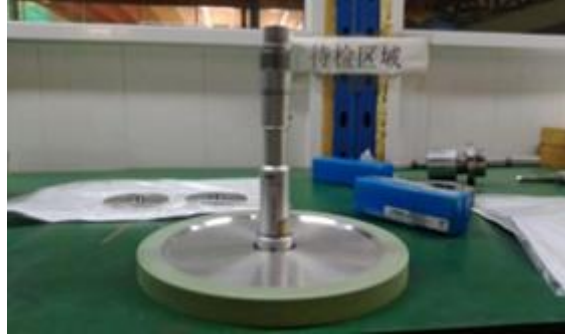
Storage: Labeled packages with plastic containers or bags are stored in the cabinet.

For each batch of diamond and CBN powder, QC department will test & analyze the grain distribution, the shape to ensure the same quality. It can be ensured ensure consistency in the quality of every batch of products.

After checking, these raw materials will be sent to producing workshops.



QC inspection



100% checking

- * Grinding wheel outside diameter runout check
- * Grinding wheel arbor size inspection
- * Dynamic balance inspection

- * Grinding wheel arbor runout check
- * Grinding wheel flatness inspection

Packaging & storage



All products must be tested here to enter the warehouse on the second floor.



The warehouse is in a set temperature and humidity condition.
Raw materials, semi-finished products and finished products are stored separately. All goods are clearly labeled.

Laser graving machine for customized logo/brand/specification



Neutral packaging boxes



Production period



Inventory

Within 2 working days



Customization:
small order

7-10 working days



Customization:
Bigger order

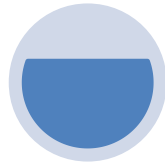
30-40 working days, basing
on the order quantity .

Pre-delivery Inspection System



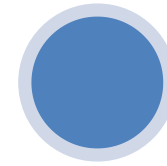
Factory internal inspection

We will carry out self-inspection before all products leave the factory first, and use a series of professional equipment to carry out full inspection of product. All inspections are based on ISO standard requirements. We can also provide customers with pictures, complete inspection videos, or live with the customer through the entire inspection process to ensure that the products reach the customer and reliable quality.



Third party inspection

If the customer asks a third party to inspect the product, we will provide a series of professional data to check and test, so that every customer can reassured.



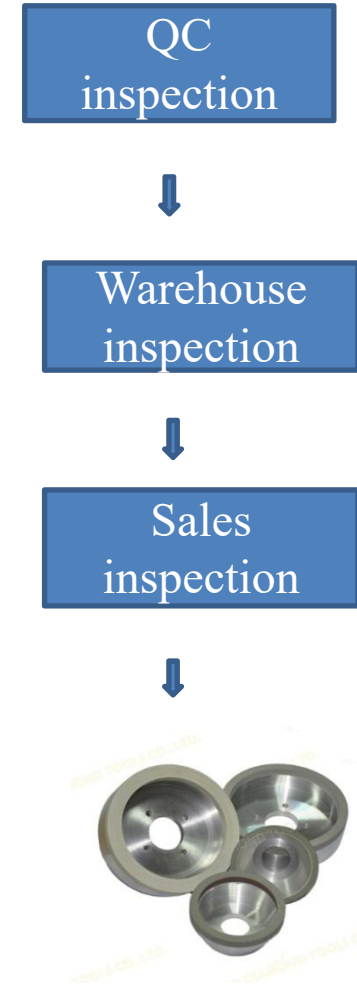
Customer self-test

If the customer has a local agent, we support the customer's agent to the factory or inspect the goods before loading, we will fully cooperate with the customer's testing needs to meet the customer's requirements.

Factory internal inspection

Each product undergoes a three-fold test before it is taken into the customer's hand:

- 1. Inspection of warehouse and production before leaving the warehouse;
- 2. The QC department includes a series of full inspection processes including dimensional accuracy, granularity, dynamic balance, etc.
- 3. The docking salesman re-inspects the abrasive, use and appearance of the product; the shipment information is reviewed several times.



JR Sales Service

1. Quality assurance:

Each product has a quality assurance, and any use and quality problem of the product can be fed back to our staff for technical support or formulation improvement.

2. Complete after-sales process:

(1) If there is a problem with the new product received by the customer, firstly contact our sales to confirm whether it is an operational problem, and the sales team will reply and confirm within 24 hours.

(2) If the customer is running into operational issues:
We will work with technicians to identify the cause of the problem and provide solutions to our customers;

(3) If it is a problem with the product itself:
First, we will confirm the problem with the technicians, and then according to the actual situation, we will repair the products and improve the formula and provide replacement.
After solving the problem for the customer, we will record and achieve the customer's product usage, further optimize the production formula and process, and continuously improve the quality of the product to achieve the customer's satisfaction.



Confirm
problems

Analysis



Improve the formula and
provide replacement

JR main market

Now we have clients in North America, Europe, Australia, Africa, Asia etc.

MARKET

Europe
America
Japan
England
Canada
Spain
Russia
Saudi Arabia
Poland
Syria
Taiwan
New Zealand
Indonesia
Ecuador
Philippine
Panama
Australia
Brazil



Thank you



Please contact us, welcome to visit our Company:

Sales Manager: Robin Wang

Mobile/Whatsapp: +8618924291172

Email: sales3@jrdiamondtools.com

Website: www.jrdiamondtools.com