



LG1500

Powered by Cummins

Model	Frequency/RPM	Standby Power	Prime Power
LG1500P	50Hz/1500RPM	1200KW	1100KW
		1500KVA	1375KVA

* Voltages: 230/400V

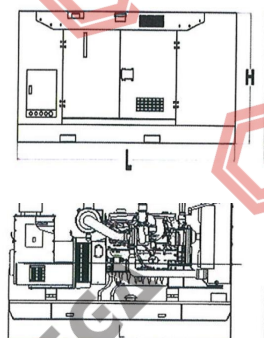
- (1) Prime Power: Ratings are as per DIN 6271, BS55114 and ISO-3046 with 10% overload capacity.
(2) Standby Power: Power available at variable load for up to a max. of 500 hours during one year of which 300 hours may be for continuous use.
(3) Operation at Altitude $\leq 1000\text{m}$, Ambient temperature $\leq 40^\circ\text{C}$. If altitude higher than 1000m, each 300m will cause additional de-rating 4%.

General Characteristics

Model	LG1500P
Engine	Perkins 4012-46TWG3A
Alternator	STAMFORD
Speed Control Type	Electrical
Phase	3
System Voltage	24
Frequency	50Hz
Engine Speed(RPM)	1500
Controller Model	AMF IntelliLite 9 or DEESEA DSE6020)

Dimensions

DIMENSION	OPEN TYPE	SILENT TYPE
Length (L)	4800mm	6350mm
Width (W)	2200mm	2620mm
Height (H)	2520mm	3140mm
Net Weight (KG)	8800KG	15000KG



Engine Specification		
Brand	Perkins	
Model	4012-46TWG3A	
No. of Cylinders and Cycle	12V, 4 Stroke	
Compression Ratio	13:1	
Displacement (L)	45.842	
Bore x Stroke (mm)	160 x 190	
Piston Speed (m/s)	9.5	
Air Intake Flow (L/s)	1800	
Exhaust Flow (L/s)	4000	
Net Engine Weight (kg)	4440	
Starting System	Electronic	
Engine Coolant Flow (L/s)	15.8	
Base Output Power (kW)	1200	
Fuel Consumption (L/h)	110% load	287
	100% load	258
	75% load	196
	50% load	141
Cooling System	Thermostat adjusting temperature (°C)	71-85
	Minimum Pressure of Radiator Cap (kPA)	70
	Coolant capacity-engine only(L)	196
Fuel System	Fuel injection pump model	Direct i
	Maximum Fuel Inlet Temperature (°C)	58
Lubricating System	Low idle (kPA)	340
	Rated speed (kPA)	400
	Max. oil temperature permitted in oil pan (°C)	105
	Lubrication system Min. capacity (L)	127
Exhaust System	Max. Back Pressure (kPA)	7
Electrical System	Starter (V)	24
	Battery charging system (A)	40

Alternator Specification		
Poles	No.	4
Connection type (standard)		VOLTAGE STAR
Insulation		Class" H"
Enclosure (according IEC-34-5)		IP23
Exciter system		PMG
Voltage regulator		A.V.R. (Electronic)
Bracket type		Single bearing
Coupling system		Flexible disc
Coating type		Standard (Vacuum impregnati

*Alternator meets BS EN 60034 and the relevant section of other international standards such as BS5000, VDE 0530, NEMA MG1-32, IEC34, C: AS1359.

Options

Engine

- Jacket Water Preheater
- Oil Preheater

Generator Sets

- Tools with the machine

Fuel System

- Low fuel level alarm
- Automatic fuel feeding system
- Fuel T-valves

Control Panel

- Remote control panel
- ATS
- Remote controller
- Synchronizing controller

Alternator

- Winding temperature measuring instrumer
- Alternator Preheater
- Anti-damp and anti-corrosion treatment
- Anti-condensation heater

Canopy

- Rental type canopy
- Trailer

Exhaust System

- Protection board from heat

Cooling System

- Front heat protection
- Coolant (-30°C)



Lubricating System

- With machine oil

Note: This drawing is provided for reference only and should not be used for planning installation. Contact yc



Standard Controller (ComAp AMF20 or DEEPSEA DSE6020)

Control	Auto/Start/Stop Control	
	Emergency Stop Pushbutton/ Alarm	
	Engine Cool Down Timer	
	Warm - up Timer	
	Load Switching Timer	
	Engine Cycle Crank	
Indications	Operating Hours	
	3 Phase Generator Voltage Sensing & Monitoring	
	Current Protection & Monitoring	
	Power Measurement (kW, kVA, kVAr, kWh, kVAh, pf)	
	Frequency Monitoring (Hz)	
	Oil Pressure/Coolant Temperature/Fuel Level Monitoring	
Warning & Shutdown Alarms	Battery Voltage Monitoring (DC)	
	Alarm (Acknowledge)	
	Generator Over/Under Voltage & Frequency	
	Crank Disconnect (Failure to Start)	
	Under/Over Speed	
	Over Current	
	Low oil pressure	
	High Water Temperature	
Features	Low Fuel Level	
	Low Water Level	
	IP 65 (if ordered with gasket)	
	Basic Scheduler	
	8 - 35V DC Supply	
	Digital Inputs(4) - Outputs(4 MPU/ 6 CAN)	
	Event Log (5 shutdowns)	

AMF Intel

DSE6020

All data is subject to change without notice. Sorry for inform.

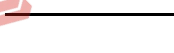
Distributed By:



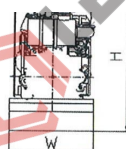
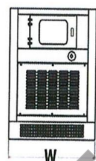
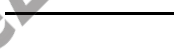
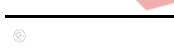
Fujian Everstrong Lega Power Equipmer
Fuqing Hong Kuan Industry Zone, Fuzhou
Provi
Tel: +86-591-
Fax: +86-591-
Email: sales@legap
Web: www.legap

CE

wer



YPE



CE



njection





SA C22.2 and



11



our local





Lite 9



always
reliable

ents Co., Ltd
zhou, Fujian
vince, China
L-8385 3032
L-8385 3130
power.com
power.com

