

LG1850 Powered by Cummins

Model	Frequency/RPM	Standby Power	Prime Power
LG1850P	50Hz/1500RPM	1480KW	1320KW
		1850KVA	1650KVA

* Voltages: 230/400V

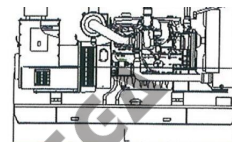
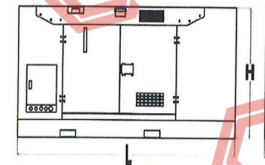
- (1) Prime Power: Ratings are as per DIN 6271, BS55114 and ISO-3046 with 10% overload capacity.
- (2) Standby Power: Power available at variable load for up to a max. of 500 hours during one year of which 300 hours may be for continuous use
- (3) Operation at Altitude \leq 1000m, Ambient temperature \leq 40°C. If altitude higher than 1000m, each 300m will cause additional de-rating 4%.

General Characteristics

Model	LG1850P
Engine	Perkins 4012-46TAG3A
Alternator	STAMFORD
Speed Control Type	Electrical
Phase	3
System Voltage	24
Frequency	50Hz
Engine Sped(RPM)	1500
Controller Model	AMF IntelliLite 9 or DEEPSEA DSE6020

Dimensions

DIMENSION	OPEN TYPE	SILENT TYPE
Length (L)	5300mm	6350mm
Width (W)	2170mm	2620mm
Height (H)	2700mm	3140mm
Net Weight (KG)	10300KG	15000KG



Engine Specification

Brand	Perkins	
Model	4012-46TAG3A	
No. of Cylinders and Cycle	12V, 4 Stroke	
Compression Ratio	13:1	
Displacement (L)	45.842	
Bore x Stroke (mm)	160 x 190	
Piston Speed (m/s)	9.5	
Air Intake Flow (L/s)	1966.67	
Exhaust Flow (L/s)	5000	
Net Engine Weight (kg)	4400	
Starting System	Electronic	
Engine Coolant Flow (L/s)	17.02	
Base Output Power (kW)	1500	
Fuel Consumption (L/h)	100% load	380
	75% load	275
	50% load	187

Cooling System	Thermostat adjusting temperature (°C)	71-85
	Minimum Pressure of Radiator Cap (kPA)	70
	Coolant capacity-engine only(L)	73
Fuel System	Fuel injection pump model	Direct i
	Maximum Fuel Inlet Temperature (°C)	58
Lubricating System	Low idle (kPA)	340
	Rated speed (kPA)	400
	Max. oil temperature permitted in oil pan (°C)	105
	Lubrication system Min. capacity (L)	115
Exhaust System	Max. Back Pressure (kPA)	5
Electrical System	Starter (V)	24
	Battery charging system (A)	40

Poles	No.	4
Connection type (standard)		Star
Insulation		Class" H"
Enclosure (according IEC-34-5)		IP23
Exciter system		PMG
Voltage regulator		A.V.R. (Electronic)
Bracket type		Single bearing
Coupling system		Flexible disc
Coating type		Standard (Vacuum impregnati

*Alternator meets BS EN 60034 and the relevant section of other international standards such as BS5000, VDE 0530, NEMA MG1-32, IEC34, C: AS1359.

Options

Engine

- Jacket Water Preheater
- Oil Preheater

Generator Sets

- Tools with the machine

Fuel System

- Low fuel level alarm
- Automatic fuel feeding system
- Fuel T-valves

Control Panel

- Remote control panel
- ATS
- Remote controller
- Synchronizing controller

Alternator

- Winding temperature measuring instrument
- Alternator Preheater
- Anti-damp and anti-corrosion treatment
- Anti-condensation heater

Canopy

- Rental type canopy
- Trailer

Exhaust System

- Protection board from heat

Cooling System

- Front heat protection
- Coolant (-30°C)

Lubricating System

- With machine oil

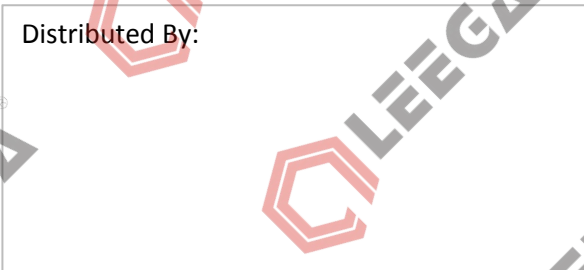
Note: This drawing is provided for reference only and should not be used for planning installation. Contact your local distributor for more information.



Control	Auto/Start/Stop Control Emergency Stop Pushbutton/ Alarm Engine Cool Down Timer Warm - up Timer Load Switching Timer Engine Cycle Crank	
Indications	Operating Hours 3 Phase Generator Voltage Sensing & Monitoring Current Protection & Monitoring Power Measurement (kW, kVA, kVAR, kWh, kVAh, pf) Frequency Monitoring (Hz) Oil Pressure/Coolant Temperature/Fuel Level Monitoring Battery Voltage Monitoring (DC) Alarm (Acknowledge)	AMF Intel
Warning & Shutdown Alarms	Generator Over/Under Voltage & Frequency Crank Disconnect (Failure to Start) Under/Over Speed Over Current Low oil pressure High Water Temperature Low Fuel Level Low Water Level	 DSE6020
Features	IP 65 (if ordered with gasket) Basic Scheduler 8 - 35V DC Supply Digital Inputs(4) - Outputs(4 MPU/ 6 CAN) Event Log (5 shutdowns)	

All data is subject to change without notice. Sorry for inform.

Distributed By:



Fujian Everstrong Lega Power Equipmer
 Fuqing Hong Kuan Industry Zone, Fuzh
 Provi
 Tel: +86-591-
 Fax: +86-591-
 Email: sales@legap
 Web: www.legap

CE

wer

--

--

--

--

--

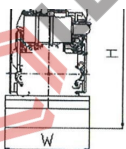
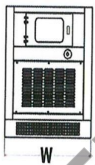
--

TYPE

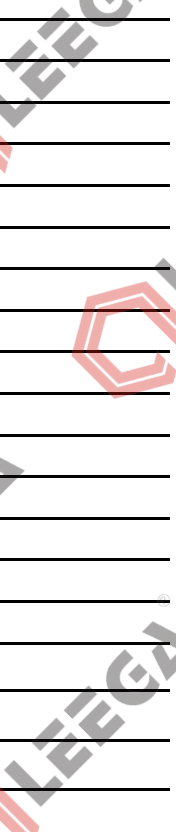
--

--

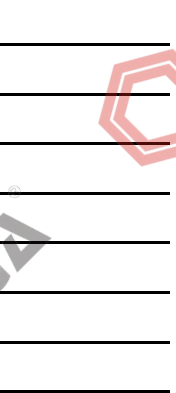
--



CE



njection



CE



ion)

SA C22.2 and



it

our local

CE





Lite 9



always
reliable

Power Systems Co., Ltd
Zhou, Fujian
Province, China
Tel: +86 595 8385 3032
Tel: +86 595 8385 3130
www.leegga.com
leegga.com