

# LG1375 Powered by Cummins

Model	Frequency/RPM	Standby Power	Prime Power
LG1375P	50Hz/1500RPM	1000KW	900KW
		1250KVA	1125KVA

\* Voltages: 230/400V

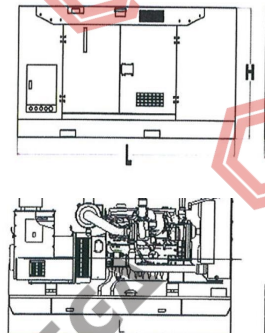
- (1) Prime Power: Ratings are as per DIN 6271, BS55114 and ISO-3046 with 10% overload capacity.
- (2) Standby Power: Power available at variable load for up to a max. of 500 hours during one year of which 300 hours may be for continuous use
- (3) Operation at Altitude  $\leq 1000m$ , Ambient temperature  $\leq 40^{\circ}C$ . If altitude higher than 1000m, each 300m will cause additional de-rating 4%.

## General Characteristics

Model	LG1375P
Engine	Perkins 4012-46TWG2A
Alternator	STAMFORD
Speed Control Type	Electrical
Phase	3
System Voltage	24
Frequency	50Hz
Engine Sped(RPM)	1500
Controller Model	AMF IntelliLite 9 or DEESEA DSE6020

## Dimensions

DIMENSION	OPEN TYPE	SILENT TYPE
Length (L)	4800mm	6350mm
Width (W)	2200mm	2620mm
Height (H)	2520mm	3140mm
Net Weight (KG)	8800KG	15000KG



### Engine Specification

Brand	Perkins	
Model	4012-46TWG2A	
No. of Cylinders and Cycle	12V, 4 Stroke	
Compression Ratio	13:1	
Displacement (L)	45.842	
Bore x Stroke (mm)	160 x 190	
Piston Speed (m/s)	9.5	
Air Intake Flow (L/s)	1700	
Exhaust Flow (L/s)	3833.33	
Net Engine Weight (kg)	4440	
Starting System	Electronic	
Engine Coolant Flow (L/s)	10	
Base Output Power (kW)	1106	
Fuel Consumption (L/h)	110% load	287
	100% load	258
	75% load	196
	50% load	141
Cooling System	Thermostat adjusting temperature (°C )	71-85
	Minimum Pressure of Radiator Cap (kPA)	70
	Coolant capacity-engine only(L)	196
Fuel System	Fuel injection pump model	Direct i
	Maximum Fuel Inlet Temperature (°C )	58
	Total Drain Flow (constant for all loads) (L/h)	1020
Lubricating System	Low idle (kPA)	340
	Rated speed (kPA)	400
	Max. oil temperature permitted in oil pan (°C )	105
	Lubrication system Min. capacity (L)	127
Exhaust System	Max. Back Pressure (kPA)	7
Electrical System	Starter (V)	24
	Battery charging system (A)	40

### Alternator Specification

Poles	No.	4
Connection type (standard)		STAR
Insulation		Class" H"
Enclosure (according IEC-34-5)		IP23
Exciter system		PMG
Voltage regulator		A.V.R. (Electronic)
Bracket type		Single bearing
Coupling system		Flexible disc
Coating type		Standard (Vacuum impregnati

\*Alternator meets BS EN 60034 and the relevant section of other international standards such as BS5000, VDE 0530, NEMA MG1-32, IEC34, C: AS1359.

### Options

#### Engine

- Jacket Water Preheater
- Oil Preheater

#### Generator Sets

- Tools with the machine

#### Fuel System

- Low fuel level alarm
- Automatic fuel feeding system
- Fuel T-valves

#### Control Panel

- Remote control panel
- ATS
- Remote controller
- Synchronizing controller

#### Alternator

- Winding temperature measuring instrumer
- Alternator Preheater
- Anti-damp and anti-corrosion treatment
- Anti-condensation heater

#### Canopy

- Rental type canopy
- Trailer

#### Exhaust System

- Protection board from heat

#### Cooling System

- Front heat protection
- Coolant (-30°C)

#### Lubricating System

- With machine oil

Note: This drawing is provided for reference only and should not be used for planning installation. Contact yc

Standard Controller (ComAp AMF20 or DEEPSEA DSE6020)	
Control	<ul style="list-style-type: none"> <li>Auto/Start/Stop Control</li> <li>Emergency Stop Pushbutton/ Alarm</li> <li>Engine Cool Down Timer</li> <li>Warm - up Timer</li> <li>Load Switching Timer</li> <li>Engine Cycle Crank</li> </ul>
Indications	<ul style="list-style-type: none"> <li>Operating Hours</li> <li>3 Phase Generator Voltage Sensing &amp; Monitoring</li> <li>Current Protection &amp; Monitoring</li> <li>Power Measurement (kW, kVA, kVAr, kWh, kVAh, pf)</li> <li>Frequency Monitoring (Hz)</li> <li>Oil Pressure/Coolant Temperature/Fuel Level Monitoring</li> <li>Battery Voltage Monitoring (DC)</li> </ul>
Warning & Shutdown Alarms	<ul style="list-style-type: none"> <li>Alarm (Acknowledge)</li> <li>Generator Over/Under Voltage &amp; Frequency</li> <li>Crank Disconnect (Failure to Start)</li> <li>Under/Over Speed</li> <li>Over Current</li> <li>Low oil pressure</li> <li>High Water Temperature</li> <li>Low Fuel Level</li> <li>Low Water Level</li> </ul>
Features	<ul style="list-style-type: none"> <li>IP 65 (if ordered with gasket)</li> <li>Basic Scheduler</li> <li>8 - 35V DC Supply</li> <li>Digital Inputs(4) - Outputs(4 MPU/ 6 CAN)</li> <li>Event Log (5 shutdowns)</li> </ul>



AMF Intelli



DSE6020

All data is subject to change without notice. Sorry for inform.



Distributed By:

Fujian Everstrong Lega Power Equipmer  
Fuqing Hong Kuan Industry Zone, Fuzh  
Provi

Tel: +86-591-

Fax: +86-591-

Email: sales@legap

Web: www.legap



CE

wer


--

--

--

--

--

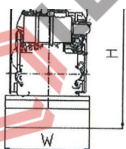
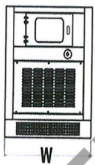
--

TYPE

--

--

--



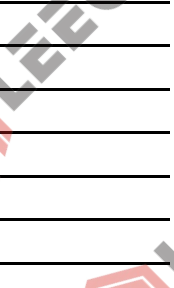
CE



Injection



CE



ion)

SA C22.2 and



it



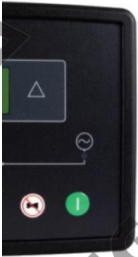
our local



CE



Lite 9



always  
**reliable**

ents Co., Ltd  
zhou, Fujian  
vince, China  
l-8385 3032  
l-8385 3130  
power.com  
power.com