

SPECIFICATION

(产品规格书)

COB 白光 LED

(300W)

Customer

Part NO.

JXC-lxWlx-xxxAx-0416

Spec. NO.

JX-SPEC-CW-0300

Version NO.

B0

Description

300W White COB-LED

Created Date

2019.01.02

CUSTOMER APPROVED

(客户确认)

CUSTOMER APPROVED (客户确认)		

R&D DEPARTMENT

(开发部)

APPROVED

(核准)

CHECKED

(审核)

PREPARED

(制定)

邹清清

R&D DEPARTMENT (开发部)		
APPROVED (核准)	CHECKED (审核)	PREPARED (制定)
		邹清清



广州晶鑫光电科技有限公司

GUANGZHOU JINGXIN OPTOELECTRONICS TECH CO.,LTD

Part No.	JXC-lxWlx-xxxAx-0416	Spec. No.	JX-SPEC-CW-0300	Version	B0
----------	----------------------	-----------	-----------------	---------	----

■ Product Selection Guide (产品选择)

Demand	5000-10000K	
Ra>70	JXC-ICWI7-xxxAx-0416	

Notes: "xxxxx" above in the Part No. means different products contain different details.

"xxxxx"表示不同的产品具有不同的细节

■ Product Feature (产品特点)

Emitting Color (发光颜色)		Lens (透镜)	Product Description (产品描述)	Input & Output (输入输出)
LED Chip (LED 芯片)	LED (product) (LED 产品)			
Blue (蓝光)	Cold White (正白)	Water Clear, Glass, Flat (无色透明, 玻璃, 平面)	High Thermal Conductivity Copper Substrate PCB (高导热铜基板)	Color Controlled by Circuit (单一白光)

■ Absolute Maximum Rating(At TA=25°C) (极限参数)

Parameter (参数)	Symbol (符号)	Ratings (数值)	Units (单位)
Power Dissipation (功率)	P _D	300	W
Continuous Forward Current (正向输入电流)	I _F	24	A
Peak Forward Current *2 (顺向脉冲电流)	I _F (Peak)	24.5	A
LED Junction Temperature (结点温度)	T _J	125	°C
Reverse Voltage (反向电压)	V _R	5	V
Operating Temperature Range (工作温度)	T _{OPR}	-30°C To +85°C	
Storage Condition(储存)	TA & RH	包装未破 25±5°C & 30-65%一年	
Manual Soldering Temperature (手工焊接温度)	T _{SOL}	350°C± 10°C For 3~5 Seconds	
ESD Sensitivity (抗静电能力)	ESD	2000V HBM	

Notes: *1, Tolerance Θ :10%, (Θ 公差为 10%)

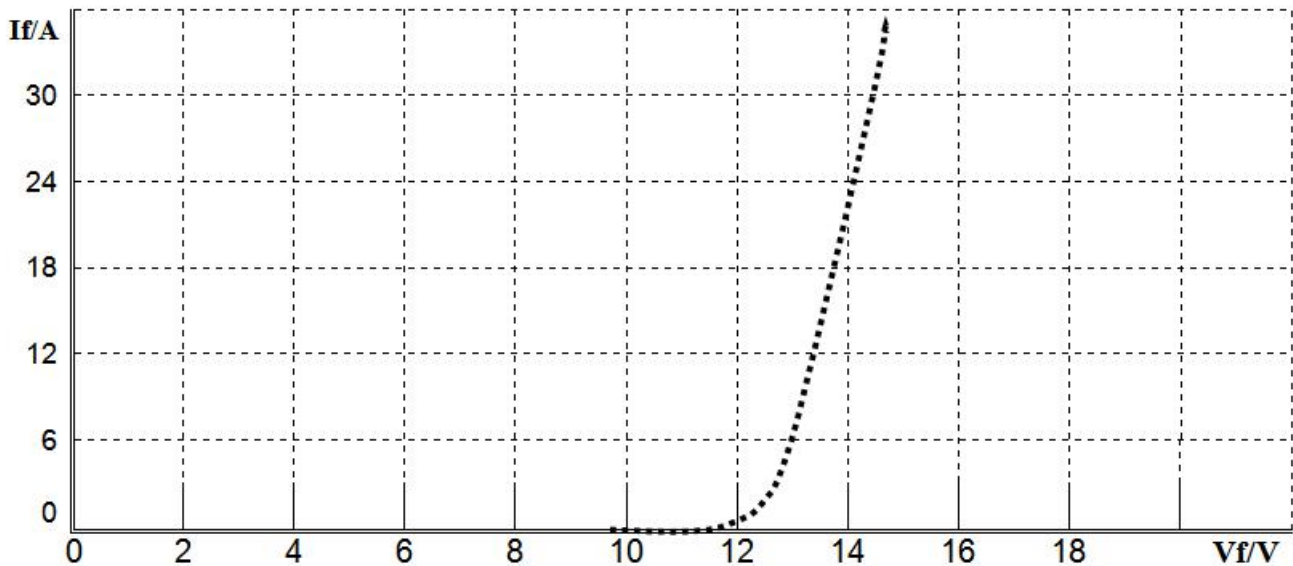
*2, 1/10 Duty Cycle 0.1ms Pulse Width.(脉冲宽度 0.1ms, 占空比 1/10)

Part No.	JXC-lxWlx-xxxAx-0416	Spec. No.	JX-SPEC-CW-0300	Version	B0
-----------------	----------------------	------------------	-----------------	----------------	----

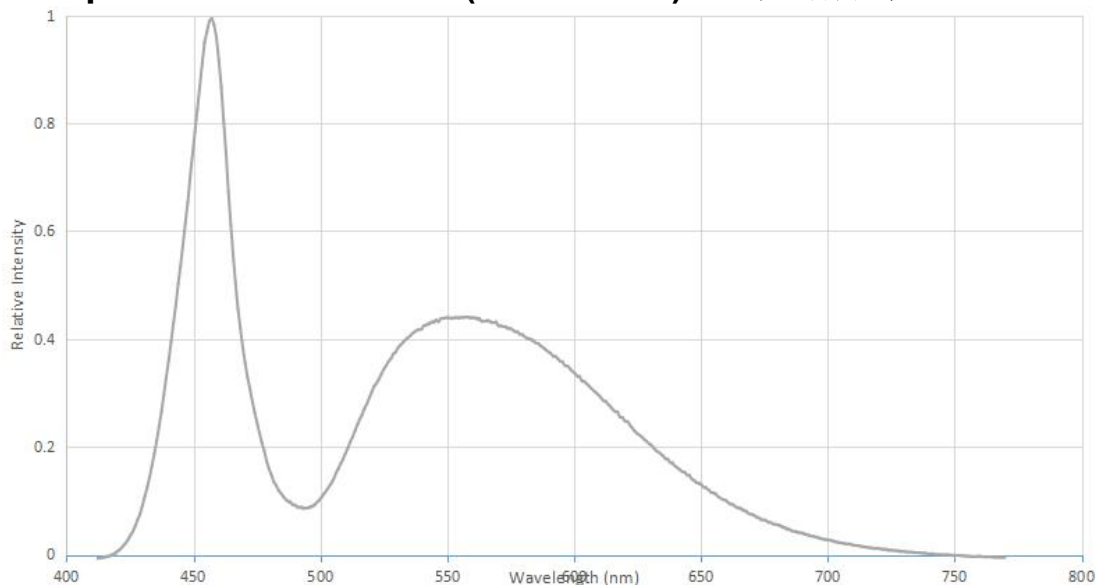
■ Electrical/Optical Characteristics (At Ta=25°C) (光电参数)

Parameter/unit (参数/单位)	Symbol (符号)	Conditions (测试条件)	Min. (最小值)	Typ. (典型值)	Max. (最大值)	tolerance (公差)
Luminous Flux/lm (光通量/流明)	Φ	$I_F=24A$	---	14000	16000	10%
Forward Voltage/V (正向压降/伏)	Vf	$I_F=24A$	12	---	16	0.5V
Color Temperature/K (色温/开)	TC	$I_F=24A$	5000	6500	10000	10%

■ Forward Current Curves (At Ta=25°C) (正向特性)



■ Spectrum Distribution (At Ta=25°C) (光谱分布)

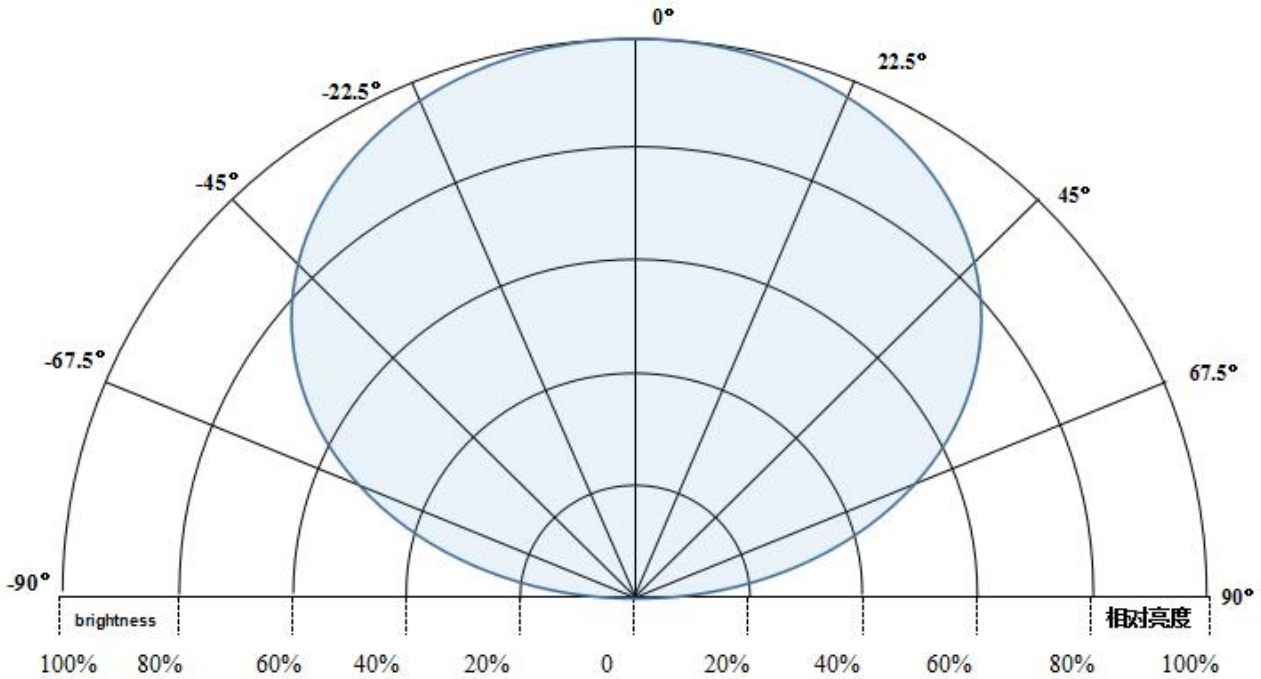


广州晶鑫光电科技有限公司

GUANGZHOU JINGXIN OPTOELECTRONICS TECH CO.,LTD

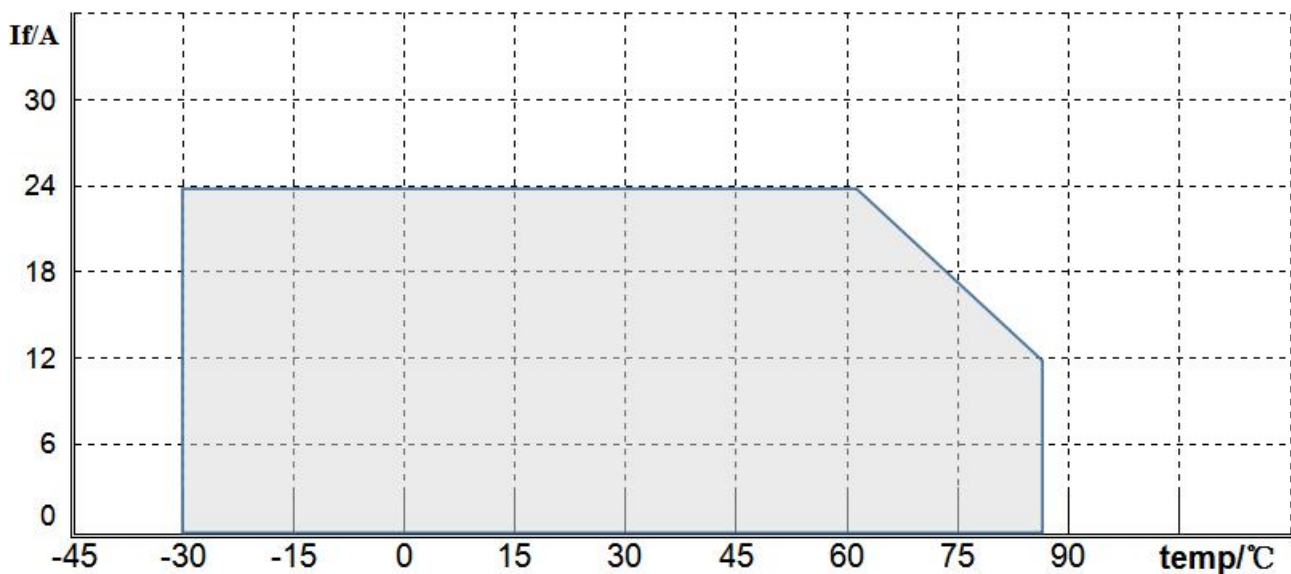
Part No.	JXC-lxWlx-xxxAx-0416	Spec. No.	JX-SPEC-CW-0300	Version	B0
----------	----------------------	-----------	-----------------	---------	----

■ Radiation Pattern (辐射分布)



Notes: Tolerance Θ :10%, (Θ 公差为 10%)

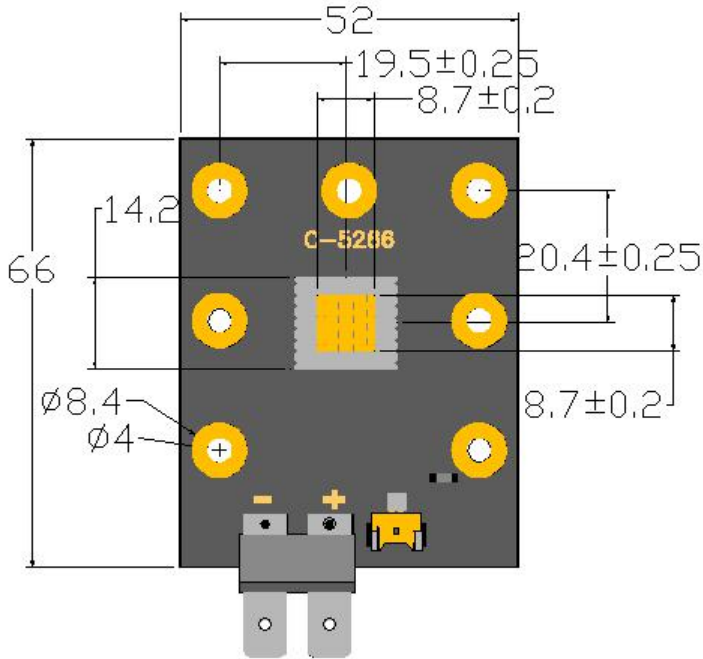
■ Current-Temperature Curves (最大工作电流与工作环境温度曲线)



Part No.	JXC-lxWlx-xxxAx-0416	Spec. No.	JX-SPEC-CW-0300	Version	B0
-----------------	----------------------	------------------	-----------------	----------------	----

■ Package Dimensions & Product Picture (封装尺寸与产品图)

Product 1: 52mmx66mm 铜基板



- Notes:**
- 1, All dimensions are in millimeters. (所有尺寸以毫米为单位)
 - 2, Tolerance is ± 0.25 unless otherwise noted (未标注公差为: ± 0.25)

Part No.	JXC-lxWlx-xxxAx-0416	Spec. No.	JX-SPEC-CW-0300	Version	B0
-----------------	----------------------	------------------	-----------------	----------------	----

Instruction

1. Reserve:

It should be reserved in dry cabinets in case of moisture. The temperature for reserve is $25^{\circ}\text{C}\pm 3^{\circ}\text{C}$, and the humidity is $>40\%$ but $<60\%$.

2. How to handle after removing the tubes:

When sticking the tin, the pasted components separated from the surface of lens may affect lighting efficiency to cause illuminating degradation. Therefore, it must be complied as below:

- A. The time which products are bare in the air after the packing bags cannot exceed 72 hours.
- B. The temperature of reserve for products which are not used out is $25^{\circ}\text{C}\pm 3^{\circ}\text{C}$, and the humidity is $>40\%$ but $<60\%$.
- C. It is advised to use hand weld since lens are not endurable with high temperature.

3. Products should avoid machinery pressure and strong shake during cooling after tin is welded.

4. Fast cooling is not allowed.

5. Weld on anamorphic pcb is not allowed.

6. Don't touch water, il and organic liquor.

7. Current should be considered when products which are used in max. temperature.

8. The appearance and size of products can be revised without any notice.

9. Requirements for electrostatic prevention:

Wear wrist strap or static-proof glove when use products, and all the equipment, fixtures and worktable must put to earth.

10. Must use driver with constant current.