

# CNM SV 系列 / CNM SV SERIES



## PRODUCT INFORMATION/ 产品信息

Pump Design/产品名称: Solenoid(Piston) Pump/电磁水泵  
 Insulation/绝缘等级: Class H  
 Net Weight/产品净重: 0.123~0.154Kg  
 Outlet Connector/出水接口: G1/8Thread/G/8 螺纹  
 Self-priming/自吸压力: 0~6Bar

## LABORATORY TEST CONDITION/ 工作条件

- Ta within 60°C, Tf within 35°C / Ta: 60°C以下, Tf: 35°C以下
- ED100%: work continuously / ED100%: 持续工作
- Ta: Ambient temperature / Ta: 环境温度
- Tf: Temperature of fluid water / Tf: 流体温度

## APPLICATIONS/ 应用领域

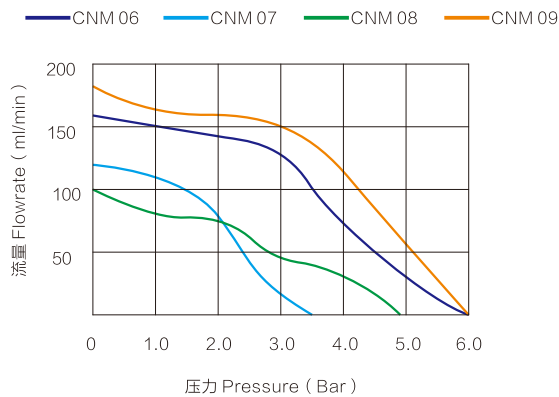
Steam Station  
 蒸汽站/台体式蒸汽熨斗

Suitable to dry-use only during priming  
 仅允许在上水启动时短时干抽

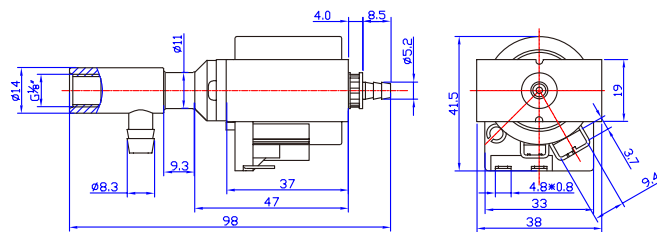
型号 / Model	CNM 06	CNM 07	CNM 08	CNM 09
流量 / Flowrate (ml/min)	160	120	100	180
最大压力 / Max Pressure(bar)	6.0	3.5	5.0	6.0
功率 / Power(W)	20	20	20	22
噪音 / Noise(dB)	50	50	55	55
工作方式 / Duty Cycle	ED 100%/持续工作			
电压规格 / Voltage	AC 220-240V/50Hz, 120V/60Hz, 220V/60Hz			
产品认证 / Product Certificate	RoHS、REACH、FDA、TUV、UL			

## Performance Curve/ 性能曲线

测试条件: 水温20°C, 室温25°C。所有参数公差为±15%, 仅供参考。  
 Test Condition: Water temperature 20°C, Indoor temperature 20°C. The tolerance range of all the parameters is ±15%. Just for reference.



## Mechanical Drawing & Dimension/ 外型尺寸



Dimensions/ 单位: millimeters/ 毫米