

ZG-290.ZG-300 型罗茨鼓风机性能表

ZG-290.ZG-300 Roots Type Blower Pressure Performance Data

风机 型号 Model	转速 rpm r/min	理论流量 Capacity m ³ /min	各排气压力下的进口流量Qs(m ³ /min),轴功率La(kW)及所配电机功率Po(kW) Inlet Flow Qs (m ³ /min), Shaft Power La (kW) and Motor Power Po (kW)												电机 极数 Motor Pole																		
			9.8kPa		19.6kPa		29.4kPa		39.2kPa		49kPa		58.8kPa			68.6kPa		78.4kPa		88.2kPa		98kPa											
			Qs	La	Qs	La	Qs	La	Qs	La	Qs	La	Qs	La		Qs	La	Qs	La	Qs	La	Qs	La	Po									
ZG-290	970	97.1	89.0	21.9	30	85.6	37.8	45	83.0	53.7	75	80.8	69.6	90	78.9	85.4	110	77.1	101.3	132	75.5	117.2	132	74.0	133.1	160	72.6	149.0	185	71.2	164.9	200	4
	1100	110.1	102.1	26.7	30	98.7	44.7	55	96.1	62.8	75	93.9	80.8	90	91.9	98.8	110	90.2	116.8	132	88.5	134.8	160	87.0	152.8	185	85.6	170.9	200	84.3	188.9	220	4
	1250	125.1	117.1	32.8	37	113.7	53.3	75	111.1	73.7	90	108.9	94.2	110	107.0	114.7	132	105.2	135.1	160	103.6	155.6	185	102.1	176.1	200	100.7	196.6	220	99.3	217.0	250	4
	1350	135.1	127.1	37.6	45	123.7	59.7	75	121.1	81.8	90	118.9	104.0	132	117.0	126.1	160	115.2	148.2	185	113.6	170.3	200	112.1	192.4	220	110.7	214.5	250	109.3	236.6	280	4
	1450	145.1	137.2	42.8	55	133.8	66.5	75	131.2	90.3	110	128.9	114.0	132	127.0	137.8	160	125.2	161.5	185	123.6	185.3	220	122.1	209.0	250	120.7	232.7	280	119.4	256.5	280	4
	1550	155.1	147.2	50.2	55	143.8	75.6	90	141.2	101.0	132	139.0	126.4	160	137.0	151.7	185	135.3	177.1	200	133.7	202.5	250	132.1	227.9	250	130.7	253.3	280				4
ZG-300	1650	165.1	157.2	56.4	75	153.8	83.5	110	151.2	110.5	132	149.0	137.5	160	147.1	164.5	200	145.3	191.6	220	143.7	218.6	250	142.2	245.6	280							4
	970	114.0	104.5	27.1	30	100.6	45.7	55	97.6	64.4	75	95.1	83.0	110	92.9	101.6	132	90.9	120.2	132	89.0	138.8	160	87.3	157.5	185	85.7	176.1	200	84.1	194.7	220	4
	1100	129.2	119.8	32.2	37	115.9	53.3	75	112.9	74.4	90	110.4	95.6	110	108.2	116.7	132	106.1	137.8	160	104.3	158.9	185	102.6	180.0	200	100.9	201.1	220	99.4	222.2	250	4
	1250	146.9	137.4	40.0	45	133.5	64.0	75	130.5	88.0	110	128.0	112.0	132	125.8	136.0	160	123.8	160.0	185	121.9	184.0	200	120.2	207.9	250	118.6	231.9	280	117.0	255.9	280	4
	1350	158.6	149.2	45.6	55	145.3	71.5	90	142.3	97.4	110	139.8	123.4	160	137.5	149.3	185	135.5	175.2	200	133.7	201.1	250	131.9	227.0	250	130.3	252.9	280				4
	1450	170.4	160.9	52.8	75	157.0	80.7	90	154.0	108.5	132	151.5	136.3	160	149.3	164.2	185	147.3	192.0	220	145.4	219.8	250	143.7	247.7	280							4
1550	182.1	172.7	60.8	75	168.8	90.5	110	165.8	120.3	160	163.3	150.0	185	161.0	179.8	200	159.0	209.5	250	157.2	239.3	280										4	
1650	193.9	184.4	67.7	75	180.5	99.3	110	177.5	131.0	160	175.0	162.7	185	172.8	194.4	220	170.8	226.0	250	168.9	257.7	280										4	

进口流量是指在标准吸入状态下(绝对压力101.325kPa, 温度20°C)的进口空气流量

Performance based on inlet air at standard temperature of 20°C, an ambient pressure of 101.325kPa

注: ZG-290、ZG-300型罗茨鼓风机的传动方式均为皮带传动, 当转速为970r/min和1450r/min时, 可以使用直联传动, 但必须要在合同中注明。
Note: The driving mode of ZG-290, ZG-300 roots blower is belt transmission. When the rpm is 970r/min or 1450r/min, the direct connect drive can be used, but it must be indicated in the contract.

ZG-290.ZG-300 型罗茨鼓风机性能表

ZG-290.ZG-300 Roots Type Blower Pressure Performance Data

真空 泵型 号 Model	转速 rpm r/min	理论流量 Capacity m ³ /min	各真空度下的进口流量Qs(m ³ /min), 轴功率La(kW)及所配电机功率Po(kW) Inlet Flow Qs (m ³ /min), Shaft Power La (kW) and Motor Power Po (kW)												电机 极数 Motor Pole																		
			-9.8kPa		-14.7kPa		-19.6kPa		-24.5kPa		-29.4kPa		-34.3kPa			-39.2kPa		-44.1kPa		-49kPa		-50kPa											
			Qs	La	Qs	La	Qs	La	Qs	La	Qs	La	Qs	La		Qs	La	Qs	La	Qs	La	Qs	La	Po									
ZG-290V	970	97.1	88.6	21.9	30	86.4	29.8	37	84.3	37.8	45	82.3	45.7	55	80.4	53.7	75	78.3	61.6	75	76.2	69.6	90	74.0	77.5	90	71.6	85.4	110	71.1	87.1	110	4
	1100	110.1	101.6	26.7	30	99.4	35.7	45	97.4	44.7	55	95.4	53.7	75	93.4	62.8	75	91.4	71.8	90	89.3	80.8	90	87.0	89.8	110	84.6	98.8	110	84.1	100.6	132	4
	1250	125.1	116.7	32.8	37	114.4	43.0	55	112.4	53.3	75	110.4	63.5	75	108.4	73.7	90	106.4	84.0	110	104.3	94.2	110	102.1	104.4	132	99.7	114.7	132	99.1	116.8	132	4
	1350	135.1	126.7	37.6	45	124.5	48.7	55	122.4	59.7	75	120.4	70.8	90	118.4	81.8	90	116.4	92.9	110	114.3	104.0	132	112.1	115.0	132	109.7	126.1	160	109.2	128.3	160	4
	1450	145.1	136.7	42.8	55	134.5	54.6	75	132.4	66.5	75	130.5	78.4	90	128.5	90.3	110	126.5	102.1	132	124.4	114.0	132	122.1	125.9	160	119.7	137.8	160	119.2	140.2	160	4
	1550	155.1	146.8	50.2	55	144.5	62.9	75	142.5	75.6	90	140.5	88.3	110	138.5	101.0	132	136.5	113.7	132	134.4	126.4	160	132.1	139.0	160	129.7	151.7	185	129.2	154.3	185	4
ZG-300V	1650	165.1	156.8	56.4	75	154.6	69.9	90	152.5	83.5	110	150.5	97.0	110	148.5	110.5	132	146.5	124.0	160	144.4	137.5	160	142.2	151.0	185	139.8	164.5	200	139.3	167.3	200	4
	970	114.0	104.1	27.1	30	101.5	36.4	45	99.1	45.7	55	96.8	55.1	75	94.6	64.4	75	92.3	73.7	90	89.8	83.0	110	87.3	92.3	110	84.5	101.6	132	83.9	103.5	132	4
	1100	129.2	119.3	32.2	37	116.8	42.8	55	114.4	53.3	75	112.1	63.9	75	109.8	74.4	90	107.5	85.0	110	105.1	95.6	110	102.6	106.2	132	99.8	116.7	132	99.2	118.8	132	4
	1250	146.9	136.9	40.0	45	134.4	52.0	75	132.0	64.0	75	129.7	76.0	90	127.5	88.0	110	125.1	100.0	110	122.7	112.0	132	120.2	124.0	160	117.4	136.0	160	116.8	138.4	160	4
	1350	158.6	148.7	45.6	55	146.1	58.6	75	143.8	71.5	90	141.5	84.5	110	139.2	97.4	110	136.9	110.4	132	134.5	123.4	160	131.9	136.4	160	129.2	149.3	185	128.6	151.9	185	4
	1450	170.4	160.4	52.8	75	157.9	66.8	75	155.5	80.7	90	153.2	94.6	110	151.0	108.5	132	148.6	122.4	160	146.2	136.3	160	143.7	150.3	185	140.9	164.2	185	140.3	167.0	185	4
1550	182.1	172.2	60.8	75	169.6	75.7	90	167.3	90.5	110	165.0	105.4	132	162.7	120.3	160	160.4	135.2	160	158.0	150.0	185	155.4	164.9	185	152.7	179.8	200	152.1	182.8	200	4	
1650	193.9	183.9	67.7	75	181.4	83.5	110	179.0	99.3	110	176.7	115.2	132	174.5	131.0	160	172.1	146.9	160	169.7	162.7	185	167.2	178.6	200	164.4	194.4	220	163.8	197.6	220	4	

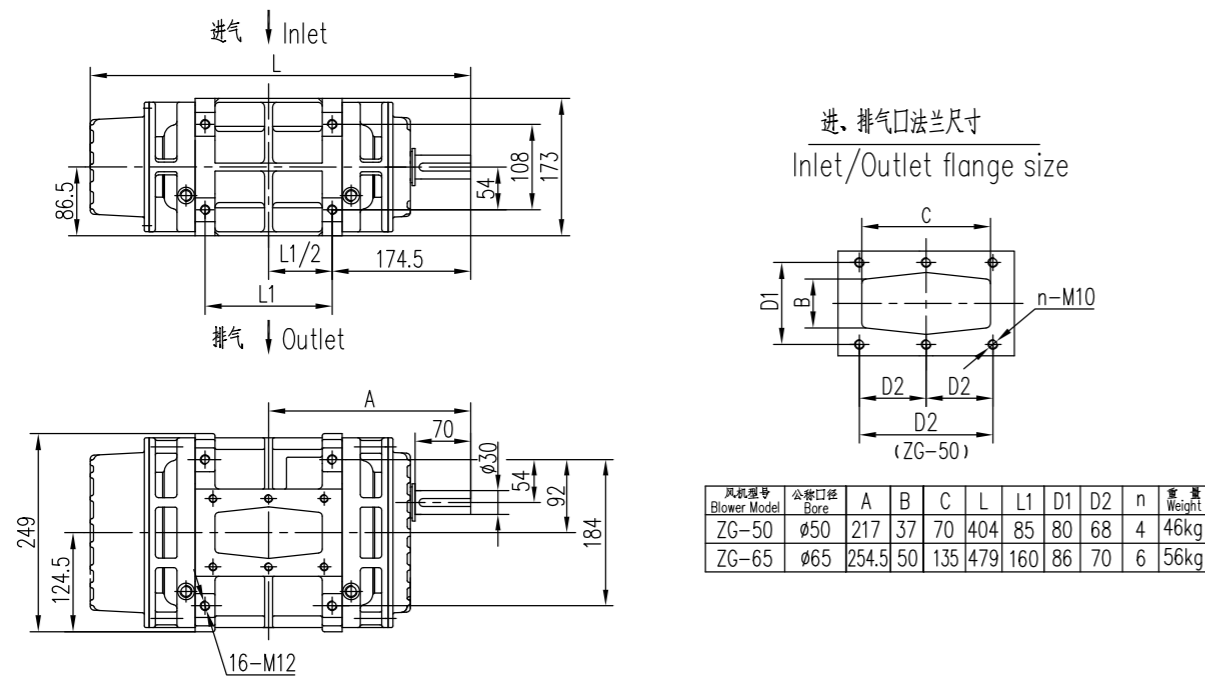
进口流量是指在各真空度下, 进口温度为20°C, 出口为绝压101.325kPa的进口空气流量

Performance based on inlet air at standard temperature of 20°C, and discharge at an ambient pressure of 101.325kPa.

注: ZG-290V、ZG-300V型真空泵的传动方式均为皮带传动, 当转速为970r/min和1450r/min时, 可以使用直联传动, 但必须要在合同中注明。
Note: The driving mode of ZG-290V, ZG-300V vacuum pump is belt transmission. When the rpm is 970r/min or 1450r/min, the direct connect drive can be used, but it must be indicated in the contract.

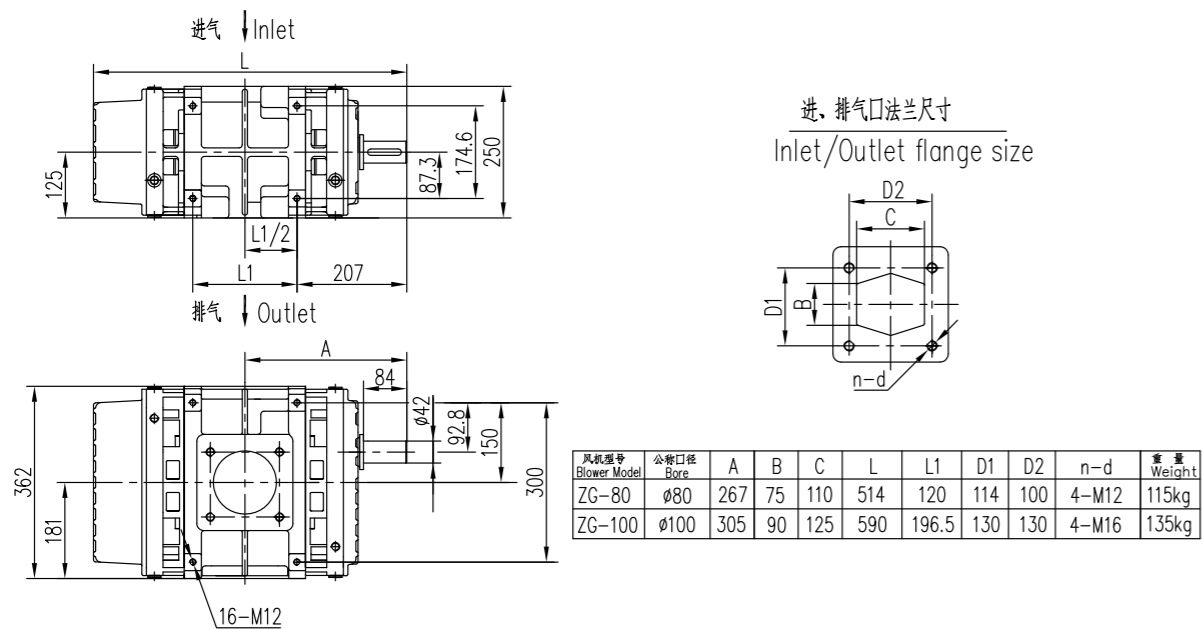
ZG-50 ZG-65 主机外形图

ZG-50 ZG-65 Outline Drawing



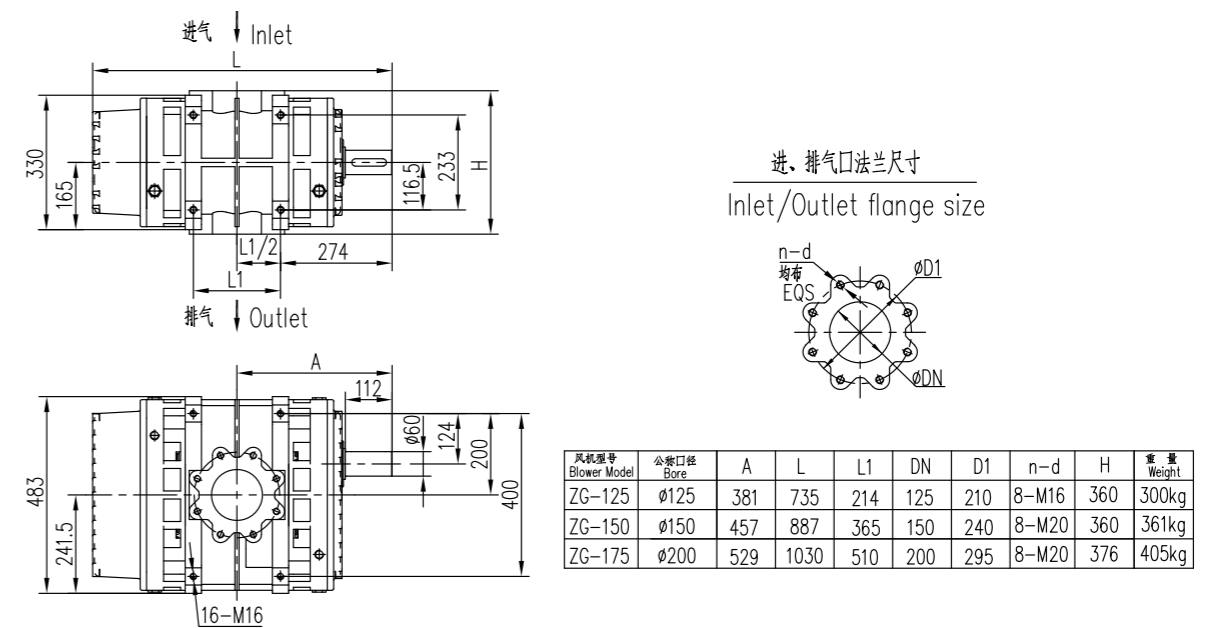
ZG-80 ZG-100 主机外形图

ZG-80 ZG-100 Outline Drawing



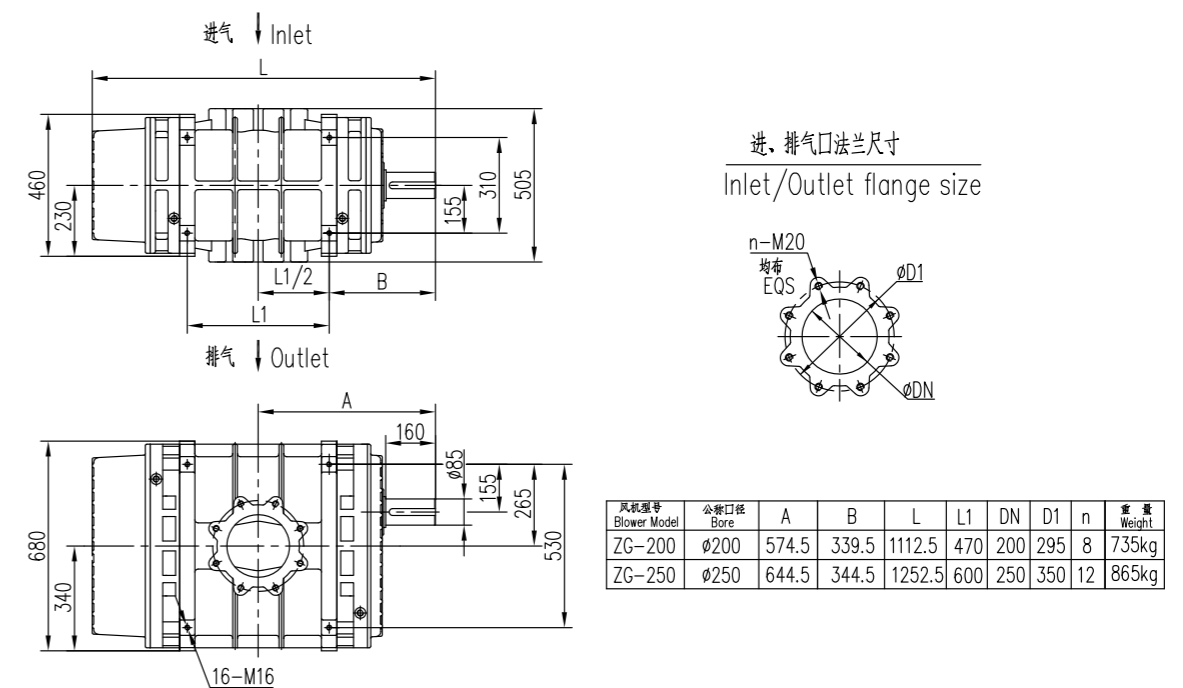
ZG-125 ZG-150 ZG-175 主机外形图

ZG-125 ZG-150 ZG-175 Outline Drawing



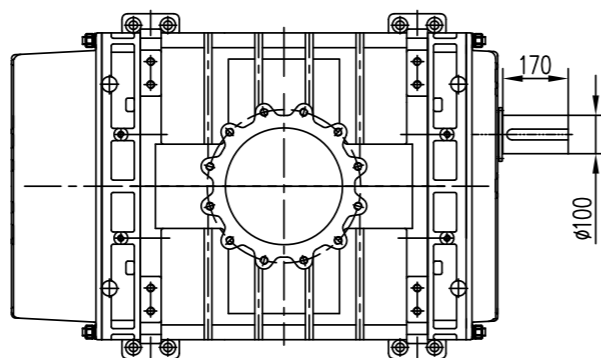
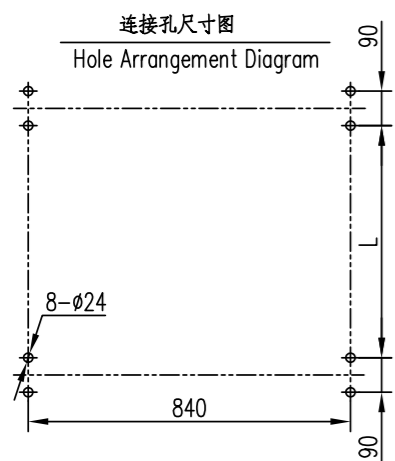
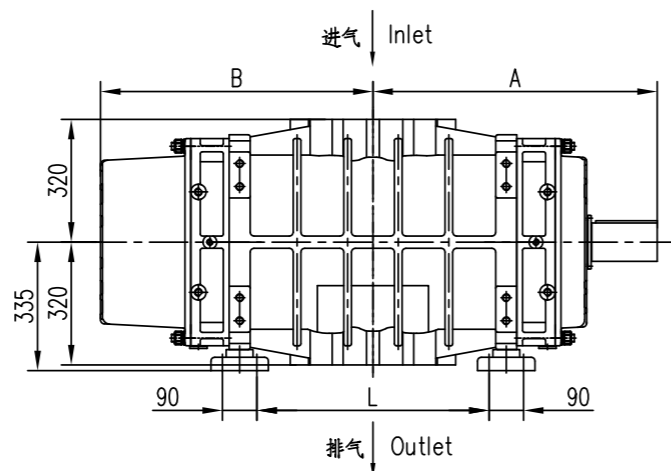
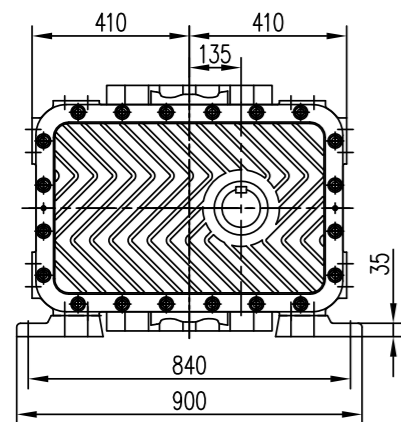
ZG-200 ZG-250 主机外形图

ZG-200 ZG-250 Outline Drawing

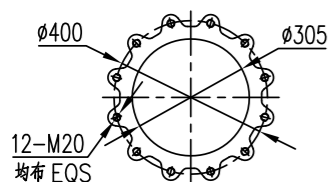


ZG-290、ZG-300 主机外形图

ZG-290、ZG-300 Outline Drawing



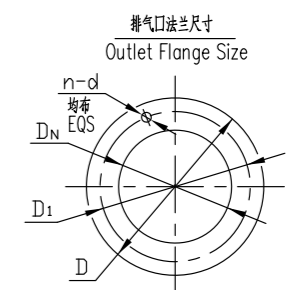
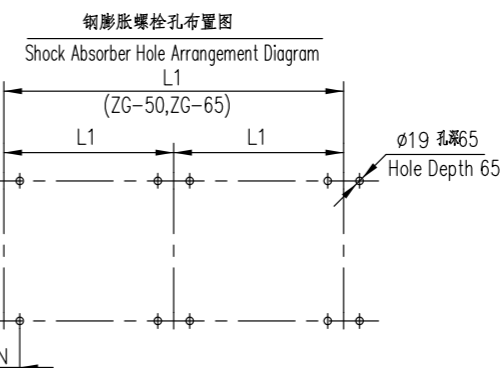
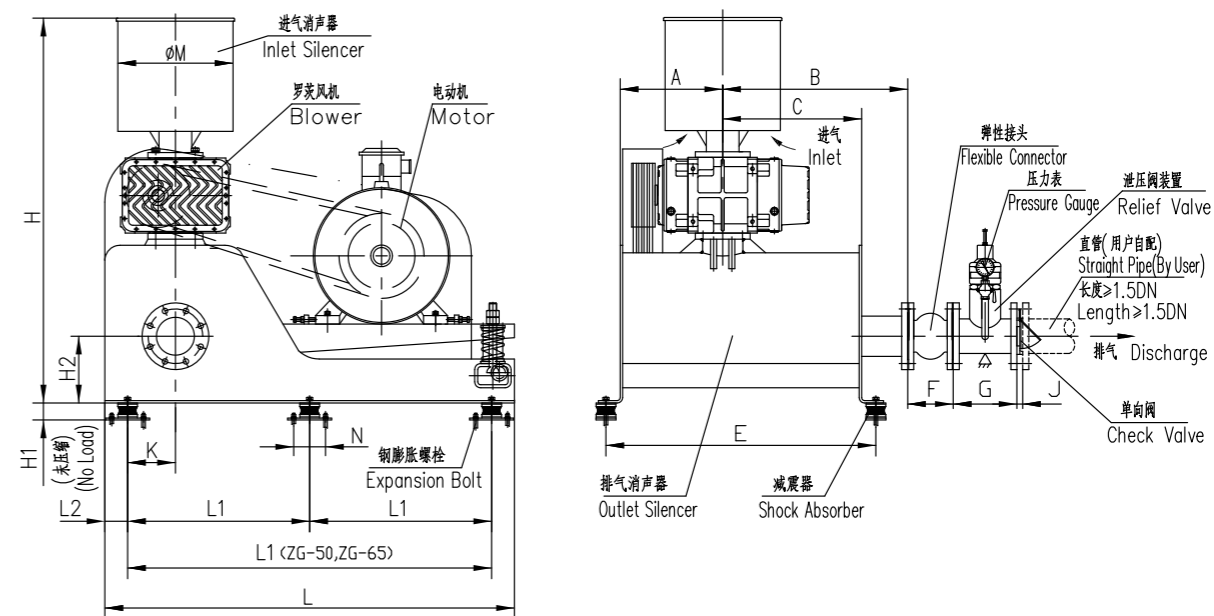
进、排气口法兰尺寸
Inlet and Outlet Flange Size



风机型号 Blower Model	公称口径 Bore	A	B	L	重量 Weight
ZG-290	ø300	686	656	495	1350kg
ZG-300	ø300	741	711	605	1460kg

ZG 系列罗茨鼓风机外形安装尺寸图

ZG Series Roots Type Blower Packages Outline Drawing (Pressure Application)

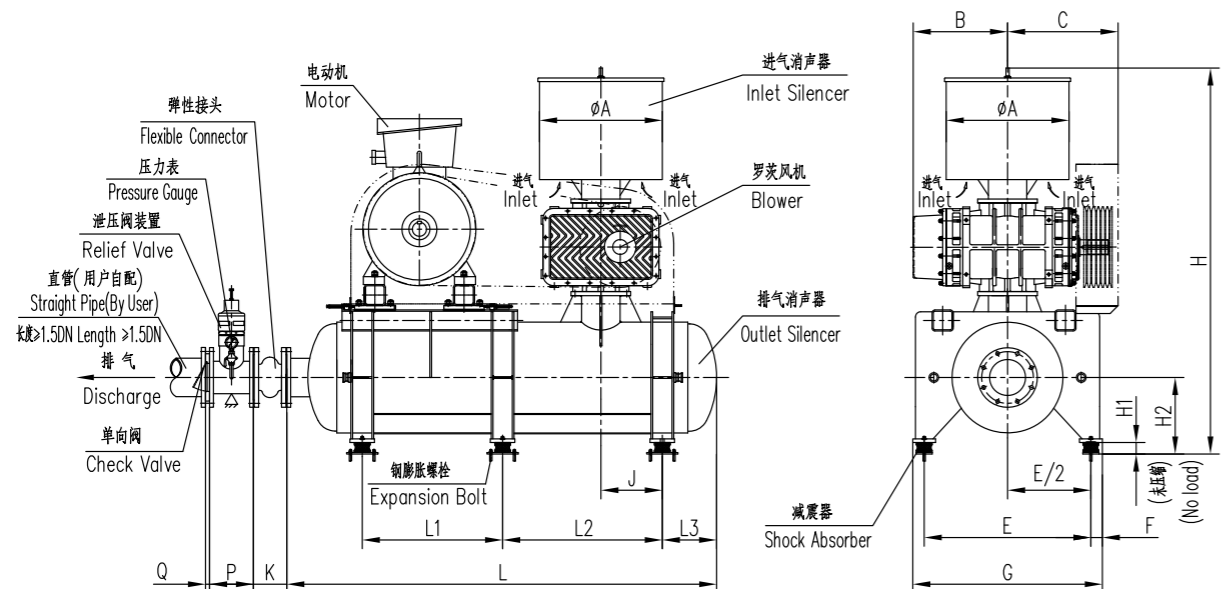


注: 1. △处用户自设支撑。
2. 基础表面水平找正, 保证其允许差值在2mm/1m以内。
Note: 1. △ Customer provided support.
2. The foundation surface should be as level as possible and insure the difference value within 2mm/1000mm.

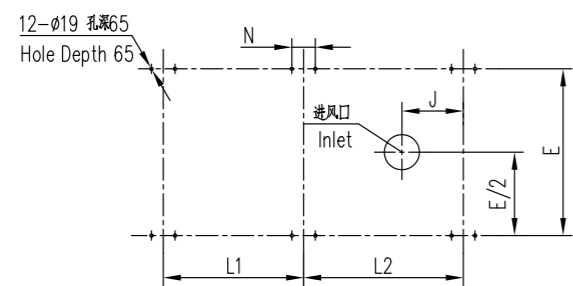
风机型号 Blower Model	A	B	C	E	F	G	J	L	L1	L2	K	H	H1	H2	M	N	DN	D1	D	n	d	机组最大重量 (Kg) Unit maximum weight (kg)
ZG-50	300	400	320	698	105	140	18	1000	850	75	90	923	56	178	310	105	ø50	ø125	ø165	4	ø18	280
ZG-65					115	150		1350	600	75	157.5	1314	56	220	318	105	ø65	ø145	ø185			340
ZG-80	308	510	408	810	135	180	18	1640	720	100	215	1635	56	290	440	105	ø80	ø160	ø200	8	ø22	590
ZG-100	345	570	458	890	150	220						354	105		ø100	ø180	ø220	700				
ZG-125	435	615	490	1020	165	200	18	1640	720	100	215	1752	56	290	540	134	ø125	ø210	ø250	8	ø22	1260
ZG-150	505			1090	180	220						215	1768		66	215	1768	66	290			540
ZG-175	578	725	548	1220	190	250	23										ø200	ø295	ø340			1920

ZG-200、250 罗茨鼓风机外形安装尺寸图 (ZMG 排气消声器)

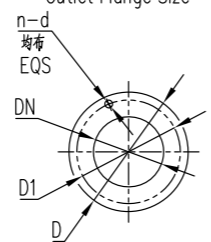
ZG-200、250 Roots Blower Packages Outline Drawing
(Pressure Application)(ZMG Outlet Silencer)



钢膨胀螺栓孔布置图
Shock Absorber Hole Arrangement Diagram



排气口法兰尺寸
Outlet Flange Size



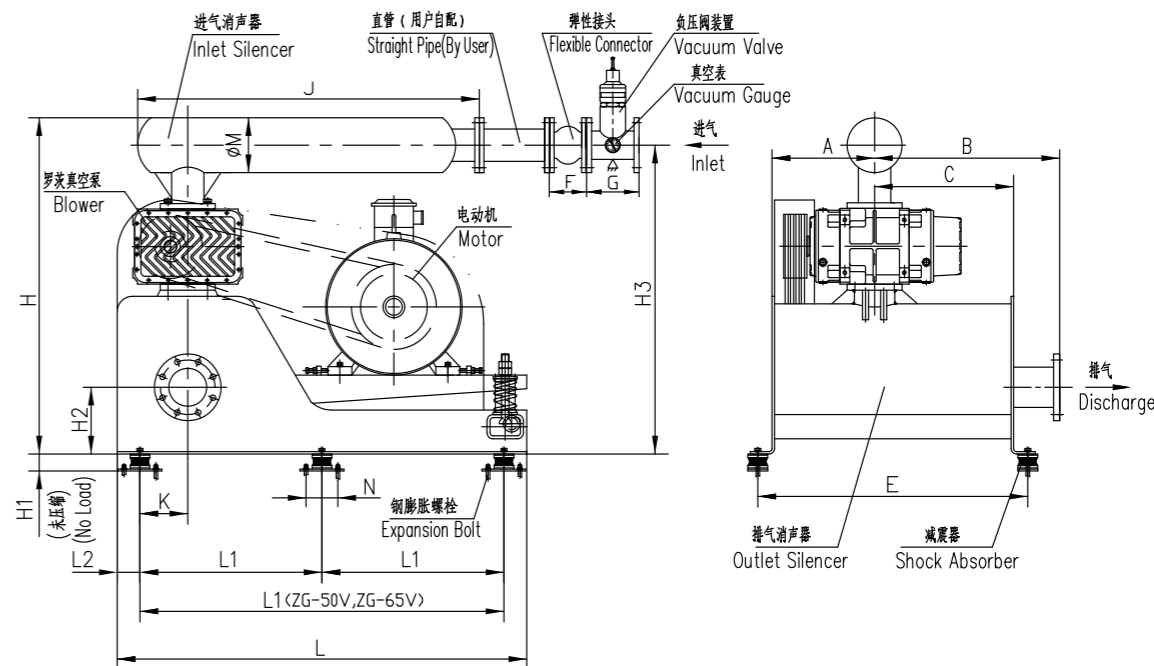
注: 1. △处用户自设支撑。
2. 基础表面水平找正, 保证其允许差值在2mm/1m以内。
Note: 1. △ Customer provided support.
2. The foundation surface should be as level as possible and insure the difference value within 2mm/1000mm.

风机型号 Blower Model	A	B	C	E	F	G	H	H1	H2	J	K	P	Q	L	L1	L2	L3
ZG-200	700	538	630	950	65	1080	2200	66	436	350	190	250	23	2450	800	910	310
ZG-250		608	700														

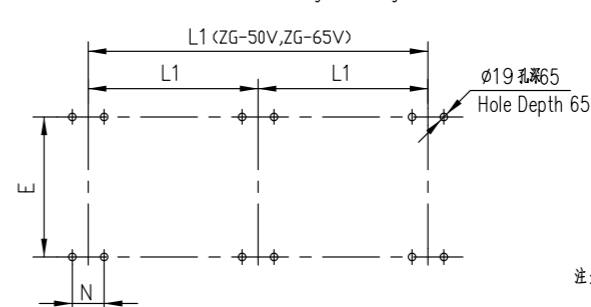
风机型号 Blower Model	N	DN	D1	D	n	d	机座最大重量(kg) (不含电机) Unit Maximum Weight(kg) (Without Motor)
ZG-200	134	ø200	ø295	ø340	8		1770
ZG-250		ø250	ø350	ø395	12	ø22	1915

ZG-V 系列罗茨真空泵机组外形安装尺寸图

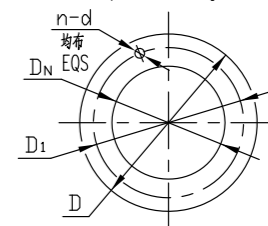
ZG-V Series Roots Type Blower Packages Outline Drawing (Vacuum Application)



钢膨胀螺栓孔布置图
Shock Absorber Hole Arrangement Diagram



进、排气口法兰尺寸
Inlet/Outlet Flange Size

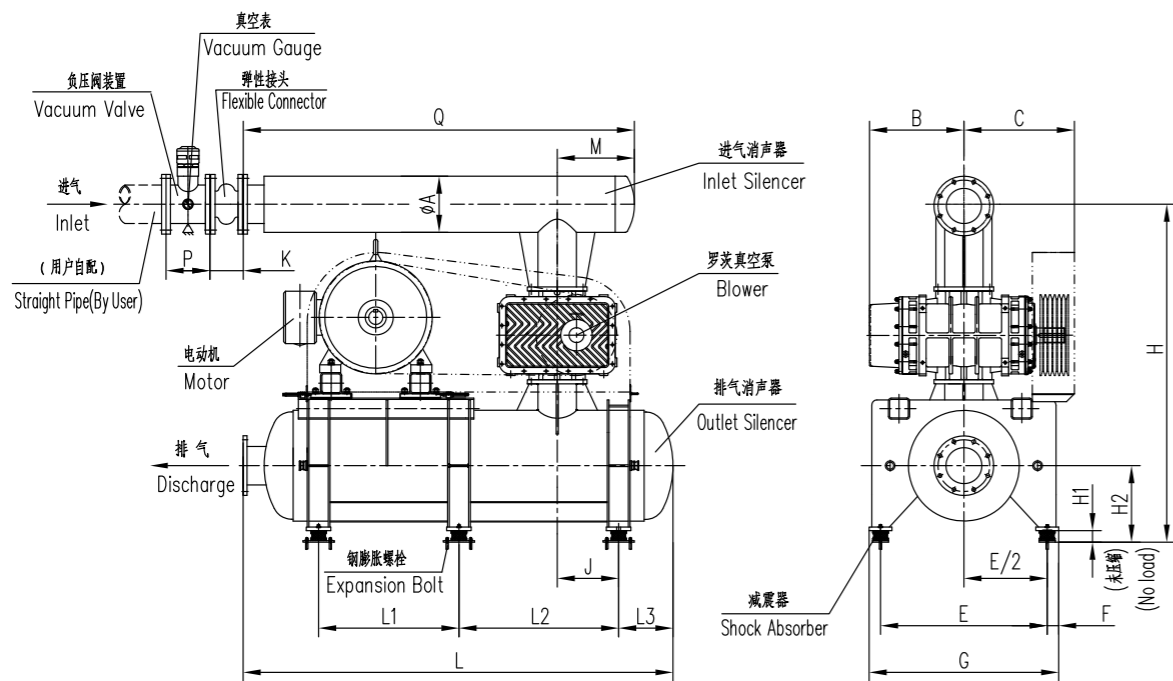


注: 1. △处用户自设支撑。
2. 基础表面水平找正, 保证其允许差值在2mm/1m以内。
Note: 1. △ Customer provided support.
2. The foundation surface should be as level as possible and insure the difference value within 2mm/1000mm.

风机型号 Blower Model	A	B	C	E	F	G	J	L	L1	L2	K	H	H1	H2	H3	M	N	DN	D1	D	n	d	机座最大重量(kg) Unit maximum weight(kg)
ZG-50V	300	400	320	698	105	160	742	1000	850	75	90	853	56	178	783	140	105	ø50	ø125	ø165	4		280
ZG-65V																							
ZG-80V	308	510	408	810	135	180	1052	1350	600	75	157.5	1140	56	220	1045	190	105	ø80	ø160	ø200	ø18		590
ZG-100V	345	570	458	890	150	180	1362	1033	215	215	1505	56	290	1375	260	105	ø100	ø180	ø220	700			
ZG-125V	435	615	490	1020	165	200	1572.5	1640	720	100	215	1571	66	290	1365	281	134	ø125	ø210	ø250	8		1260
ZG-150V	505																						1090
ZG-175V	578	725	548	1220	190	250	1870	215	1571	215	1571	66	290	1411	320	134	ø200	ø295	ø340	ø22		1920	

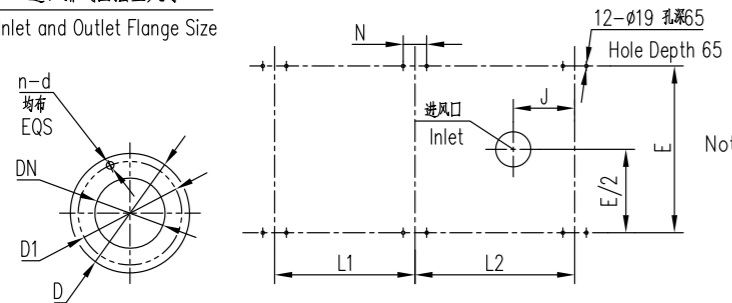
ZG-200V、250V 罗茨真空泵机组外形安装尺寸图 (ZMG 排气消声器)

ZG-200V、250V Roots Blower Packages Outline Drawing
(Vacuum Application)(ZMG Outlet Silencer)



钢膨胀螺栓孔布置图
Shock Absorber Hole Arrangement Diagram

进、排气口法兰尺寸
Inlet and Outlet Flange Size



- 注: 1. Δ 处用户自设支撑
2. 此图所配电机接线盒为左置
3. 此外形图不适合防爆电机。
4. 基础表面水平找正, 保证其允许差值在2mm/1m以内。
- Note: 1. Δ Customer provided support.
2. The motor's terminal box position is left side in the drawing.
3. This diagram is not suitable for explosion-proof motor.
4. The foundation surface should be as level as possible and insure the difference value within 2mm/1000mm.

风机型号 Blower Model	A	B	C	E	F	G	H (280S及以上)	H1	H2	J	K	P	Q	L	L1	L2	L3
ZG-200V	320	538	630	950	65	1080	1751 (1936)	66	436	350	190	250	2010	2450	800	910	310
ZG-250V	406	608	700														

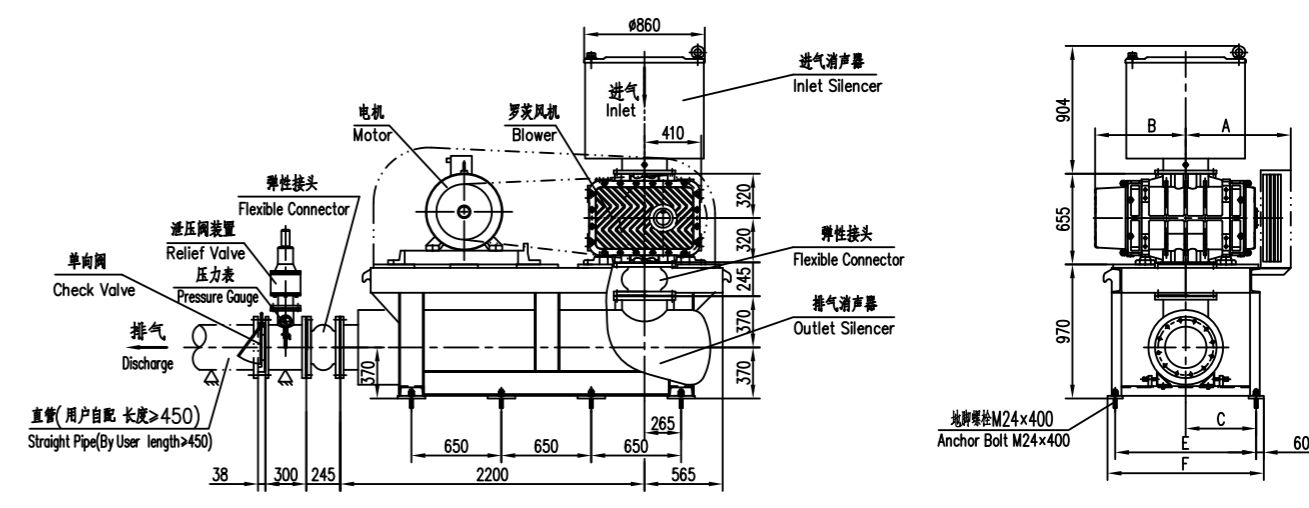
风机型号 Blower Model	M	N	DN	D1	D	n	d	机组最大重量 (kg) (不含电机) Unit Maximum Weight(kg) (Without Motor)
ZG-200V	440	134	$\phi 200$	$\phi 295$	$\phi 340$	8	$\phi 22$	1770
ZG-250V	404		$\phi 250$	$\phi 350$	$\phi 395$	12		1915

ZG-290、ZG-300 罗茨鼓风机外形安装尺寸图

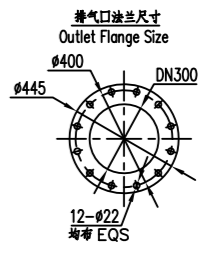
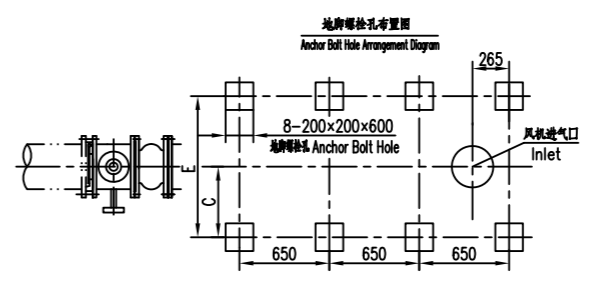
ZG-290、ZG-300 Roots Type Blower Packages Outline Drawing(Pressure Application)

本图仅适用于 Y355 及其以下的普通低压电机

The Drawing Is Only Applicable To The General Low Voltage Motor Y355 And Below



地脚螺栓孔布置图
Anchor Bolt Hole Arrangement Diagram

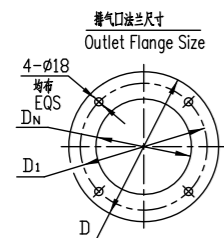
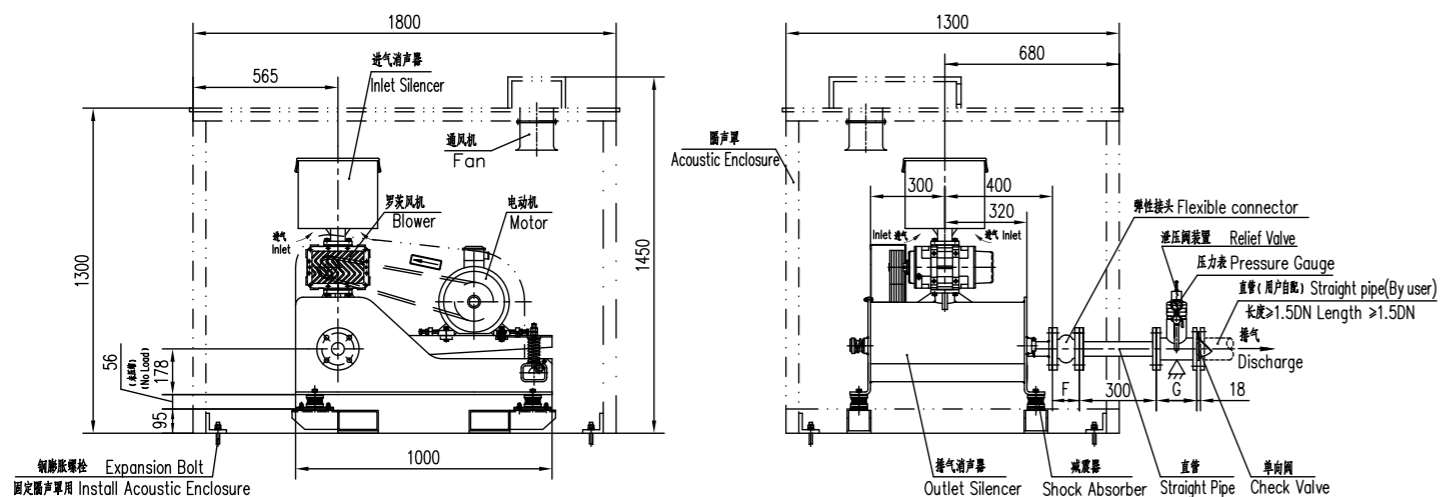


- 注: 1. Δ 处表示用户自设支撑
Note: 1. Δ Customer provided support.

风机型号 Blower Model	A	B	C	E	F
ZG-290	760	656	505	1010	1130
ZG-300	815	711	560	1120	1240

ZG 系列罗茨鼓风机组 (带隔声罩) 外形安装尺寸图

ZG Series Roots Type Blower Packages Outline Drawing(With Acoustic Enclosure)



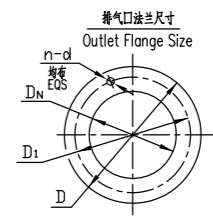
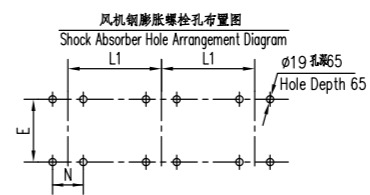
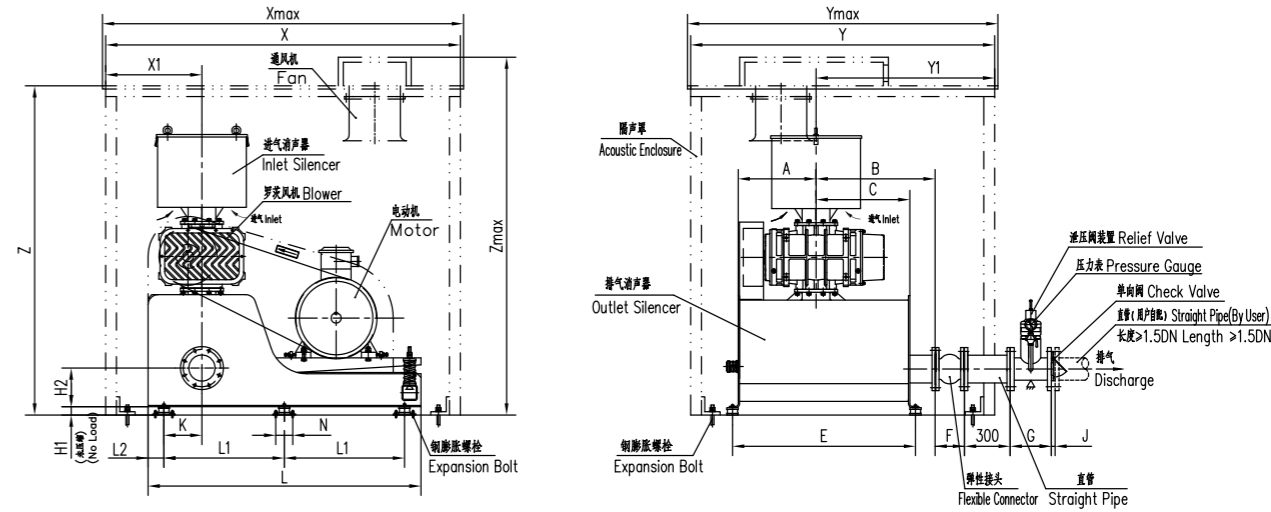
单位(unit): mm

风机型号 Model	F	G	DN	D1	D	风机最大重量 (Kg) Unit maximum weight(kg)	隔声罩重量 (Kg) Acoustic Enclosure weight(kg)
ZG-50	105	140	φ50	φ125	φ165	280	300
ZG-65	115	150	φ65	φ145	φ185	340	

- 注: 1. 处表示用户自设支撑。
 2. 请在订货时注明: 安装位置是室内还是室外。
 3. 隔声罩上无电缆穿线口, 请用户自行预埋电缆线进口。
 4. 用户必须对隔声罩外的管道进行消除噪声处理。
 5. 基础表面水平找正, 保证其允许差值在2mm/1m以内。
- Note: 1. 处Customer provided support.
 2. Please take a note on the Acoustic Enclosure will be operated indoor or outdoor before you make an order.
 3. Acoustic Enclosure without cable threading port, please pre buried cable inlet by user.
 4. The end user must take measure to remove noise to the pipe outside the Acoustic Enclosure.
 5. The foundation surface should be as level as possible and insure the difference value within 2mm/1000mm.

ZG 系列罗茨鼓风机组 (带隔声罩) 外形安装尺寸图

ZG Series Roots Type Blower Packages Outline Drawing (With Acoustic Enclosure)



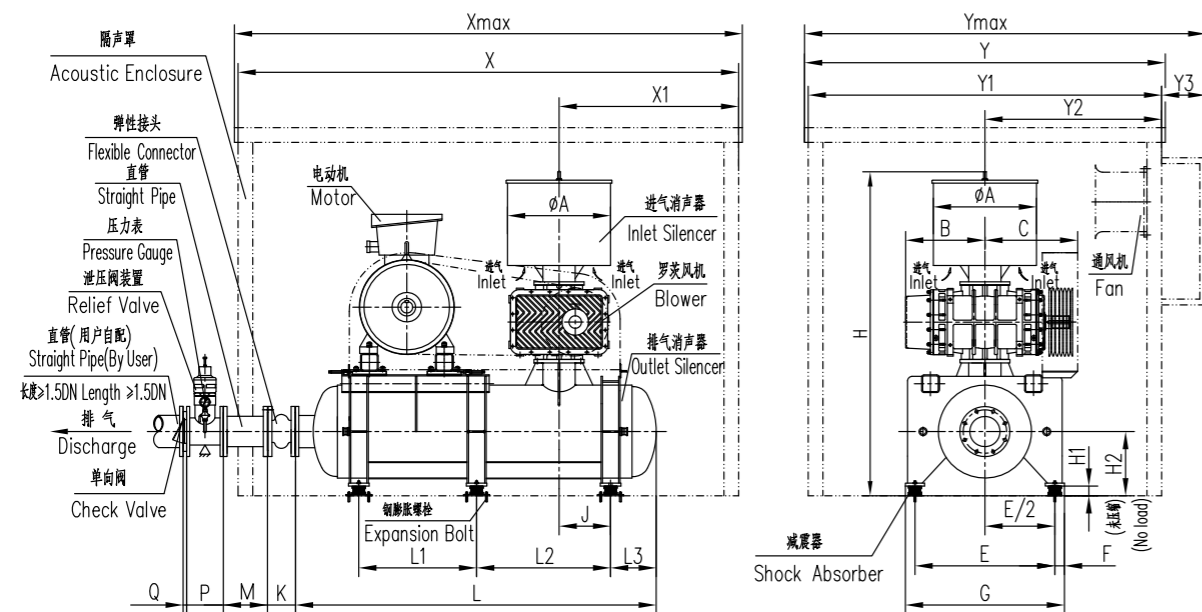
- 注: 1. 处表示用户自设支撑。
 2. 请在订货时注明: 安装位置是室内还是室外。
 3. 隔声罩上无电缆穿线口, 请用户自行预埋电缆线进口。
 4. 用户必须对隔声罩外的管道进行消除噪声处理。
 5. 基础表面水平找正, 保证其允许差值在2mm/1m以内。
- Note: 1. 处Customer provided support.
 2. Please take a note on the Acoustic Enclosure will be operated indoor or outdoor before you make an order.
 3. Acoustic Enclosure without cable threading port, please pre buried cable inlet by user.
 4. The end user must take measure to remove noise to the pipe outside the Acoustic Enclosure.
 5. The foundation surface should be as level as possible and insure the difference value within 2mm/1000mm.

单位(unit): mm

风机型号 Model	A	B	C	E	F	G	J	L	L1	L2	K	H1	H2	N	DN	D1	D	n	d	X	X1	Xmax	Y	Y1	Ymax	Z	Zmax	风机最大重量 (kg) Unit maximum weight(kg)	隔声罩重量 (kg) Acoustic Enclosure weight(kg)
ZG-80	308	510	408	810	135	180		1350	600	75	157.5	56	220	105	φ80	φ160	φ200	8	φ18	2100	660	2150	1600	870	1650	1700	1850	590	500
ZG-100	345	570	458	890	150	180		1350	600	75	157.5	56	220	105	φ100	φ180	φ220	8	φ18	2100	660	2150	1600	870	1650	1700	1850	700	500
ZG-125	435	615	490	1020	165	200	18	1350	600	75	157.5	56	220	105	φ125	φ210	φ250	8	φ18	2200	600	2250	1850	980	1900	2000	2240	1260	800
ZG-150	505			1090	180	220		1640	720	100	215	66	290	134	φ150	φ240	φ285	8	φ22	2200	600	2250	1850	980	1900	2000	2240	1680	800
ZG-175	578	725	548	1220	190	250	23	1640	720	100	215	66	290	134	φ200	φ295	φ340	8	φ22	2400	700	2450	2100	1100	2150	2000	2300	1920	900

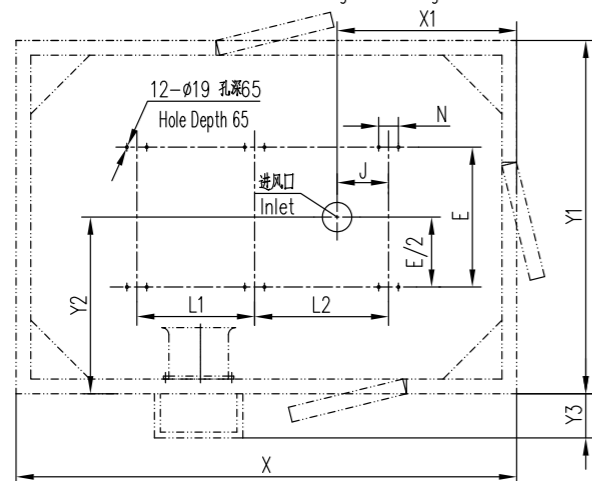
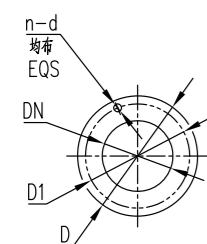
ZG-200、250 罗茨鼓风机组 (带隔声罩) 外形安装尺寸图 (ZMG 排气消声器)

ZG-200、250 Roots Blower Packages Outline Drawing
(With Acoustic Enclosure)(ZMG Outlet Silencer)



钢膨胀螺栓孔布置图
Shock Absorber Hole Arrangement Diagram

排气口法兰尺寸
Outlet Flange Size



- 注: 1. Δ 处表示用户自设支撑。
2. 请在订货时注明: 安装位置是室内还是室外。
3. 隔声罩上无电缆线穿线口, 请用户自行预埋电缆线进口。
4. 用户必须对隔声罩外的管道进行消除噪音处理。
5. 基础表面水平找正, 保证其允许差值在2mm/1m以内。
- Note: 1. Δ Customer provided support.
2. Please take a note on the Acoustic Enclosure will be operated indoor or outdoor before you make an order.
3. Acoustic Enclosure without cable threading port, please pre buried cable inlet by user.
4. The end user must take measure to remove noise to the pipe outside the Acoustic Enclosure.
5. The foundation surface should be as level as possible and insure the difference value within 2mm/1000mm.

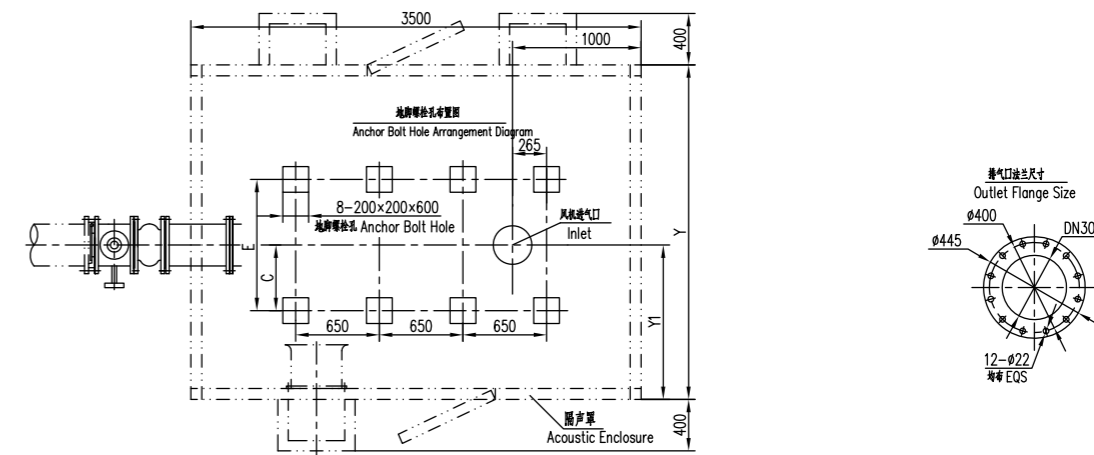
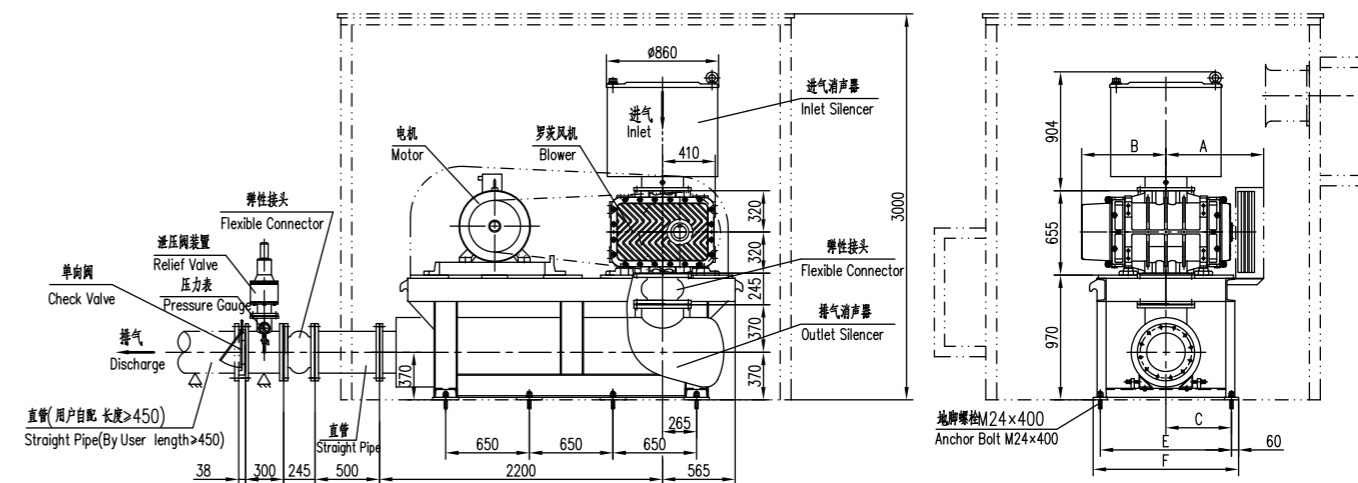
风机型号 Blower Model	A	B	C	E	F	G	H	H1	H2	J	K	M	P	Q	L	L1	L2	L3	N	DN
ZG-200	700	538	630	950	65	1080	2200	66	436	350	190	300	250	23	2450	800	910	310	134	ϕ 200
ZG-250		608	700				2222				230	400	300	45						ϕ 250

风机型号 Blower Model	D1	D	n	d	Xmax	X	X1	Ymax	Y	Y1	Y2	Y3	机组最大重量(kg) (不含电机及隔声罩) Unit Maximum Weight(kg) (Without Motor And Acoustic Enclosure)	隔声罩重量(kg) Acoustic Enclosure Weight(kg)
ZG-200	ϕ 295	ϕ 340	8	ϕ 22	3450	3400	1220	2725	2450	2400	1200	300	1770	1170
ZG-250	ϕ 350	ϕ 395	12				1150						1915	

ZG-290、300 罗茨鼓风机组 (带隔声罩) 外形安装尺寸图

ZG-290、300 Roots Type Blower Packages Outline Drawing(With Acoustic Enclosure)

本图仅适用于 Y355 及其以下的普通低压电机
The Drawing Is Only Applicable To The General Low Voltage Motor Y355 And Below



- 注: 1. Δ 处表示用户自设支撑。
2. 请在订货时注明: 安装位置是室内还是室外。
3. 隔声罩上无电缆线穿线口, 请用户自行预埋电缆线进口。
4. 用户必须对隔声罩外的管道进行消除噪音处理。

风机型号 Blower Model	A	B	C	E	F	Y	Y1
ZG-290	760	656	505	1010	1130	2600	1200
ZG-300	815	711	560	1120	1240	2800	1300

- Note: 1. Δ Customer provided support.
2. Please specify indoor or outdoor application before ordering.
3. Acoustic Enclosure is not equipped with cable hole.
4. The end user must take measure to remove noise to the pipe outside the Acoustic Enclosure.