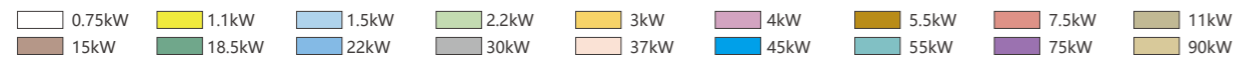


SSR-K 性能表

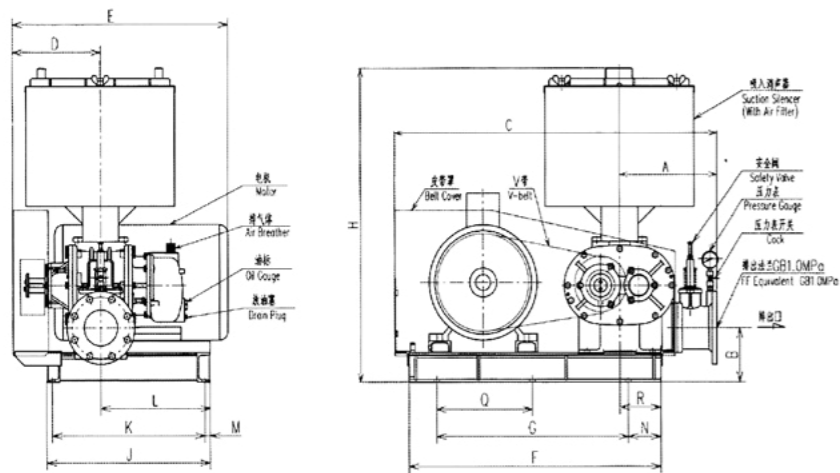
TYPE SSR-K PERFORMANCE TABLE



型式 Type	口径 Bore	转速 rpm	各压力点下的流量 Qs(m³/min) 和轴功率 La(kW)																								转速 rpm
			Suction Volume Qs(m³/min) for each discharge pressure and required power La(kW)																								
			10kPa		15kPa		20kPa		25kPa		30kPa		35kPa		40kPa		45kPa		50kPa		55kPa		60kPa				
Qs	La	Qs	La	Qs	La	Qs	La	Qs	La	Qs	La	Qs	La	Qs	La	Qs	La	Qs	La	Qs	La	Qs	La				
SSR-150K	150	930	14.04	3.60	13.69	4.90	13.39	6.20	13.11	7.60	12.88	8.90	12.69	10.30	12.51	11.70	12.33	13.10	12.19	14.50	12.05	15.80	11.93	17.20	930		
		1110	16.72	4.30	16.37	5.90	16.07	7.50	15.79	9.10	15.56	10.90	15.37	12.60	15.19	14.30	15.01	15.90	14.87	17.60	14.73	19.30	14.61	20.90	1110		
		1200	18.39	4.80	18.05	6.60	17.75	8.40	17.47	10.00	17.24	11.90	17.05	13.70	16.86	15.50	16.68	17.30	16.54	19.10	16.36	20.90	16.24	22.70	1200		
		1330	19.82	5.30	19.50	7.20	19.20	9.00	18.93	11.10	18.73	13.10	18.55	15.10	18.40	17.10	18.28	19.10	18.15	21.10	18.13	23.10	18.08	25.10	1330		
		1490	22.67	5.80	22.35	7.90	22.05	10.20	21.78	12.50	21.58	14.80	21.40	17.00	21.25	19.30	21.15	21.50	21.05	23.80	20.97	26.00	20.92	28.20	1490		
		1610	24.51	6.40	24.19	8.80	23.90	11.40	23.63	13.80	23.43	16.30	23.25	18.70	23.10	21.10	23.00	23.60	22.90	26.00	22.82	28.50	22.77	30.90	1610		
		1750	26.85	7.50	26.53	10.20	26.24	13.10	25.97	15.80	25.77	18.40	25.59	21.10	25.44	23.70	25.34	26.40	25.24	29.10	25.16	31.80	25.11	34.60	1750		
		1830	28.35	8.20	28.03	11.10	27.75	14.10	27.48	16.90	27.28	19.70	27.10	22.40	26.95	25.20	26.85	28.10	26.75	30.90	26.67	33.80	26.62	36.60	1830		
		1970	29.40	9.40	29.08	12.60	28.80	15.80	28.53	18.70	28.34	21.70	28.16	24.70	28.04	27.70	27.94	30.70	27.84	33.80	27.76	36.90	27.71	40.00	1970		
		2110	31.74	11.00	31.42	14.30	31.15	17.70	30.90	20.80	30.71	24.00	30.53	27.20	30.45	30.50	30.35	33.80	30.25	37.10	30.20	40.50	30.15	43.90	2110		
		2230	33.58	12.40	33.26	15.90	32.99	19.40	32.74	22.70	32.55	26.00	32.37	29.40	32.29	32.90	32.19	36.50	32.10	40.00	32.04	43.70	31.99	47.30	2230		
		2370	35.93	13.70	35.61	17.40	35.34	21.00	35.09	24.50	34.90	28.00	34.72	31.70	34.64	35.30	34.54	39.10	34.44	42.90	34.38	46.80	34.33	50.70	2370		

SSR-K 外形尺寸图

OUTLINE DIMENSIONS



备注: 1. 尺寸单位是毫米 (mm).
2. 重量中不包含电动机重量。
3. 尺寸 E 是按最大电动机标注的。

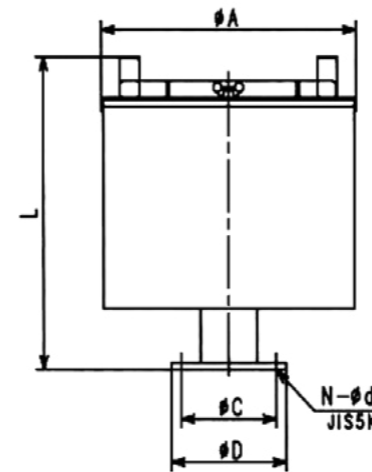
Note: 1. Unit of dimension is millimeter (mm).
2. The weight of motor is excluded in the above value.
3. Dimension E is marked according to the maximum motor.

型式 Type	口径 Bore	A	B	C	D	E	F	G	H	J	K	L	M	N	Q	R	n-Φd	重量 (kg) Weight(kg)
50K	50A	230	120	810	195	510	640	440	690	330	300	210	15	100	100	4-15	88	
65K	65A	230	130	810	215	545	640	440	775	370	340	230	15	100	100	4-15	123	
80K	80A	280	145	975	230	710	780	580	850	480	450	335	15	100	130	4-15	88	
100K	100A	280	155	975	270	730	780	580	870	480	450	295	15	100	125	4-15	221	
125K	125A	355	185	1180	322.5	790	920	700	1072	600	560	402	20	120	120	6-15	271	
150K	150A	400	205	1400	403	950	1100	900	1157	700	660	442	20	100	100	6-15	510	

K 系列风机用附属品

TYPE K ACCESSORIES

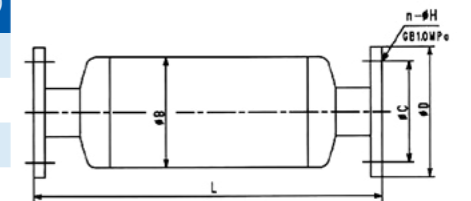
吸入消声器
Suction Silencer



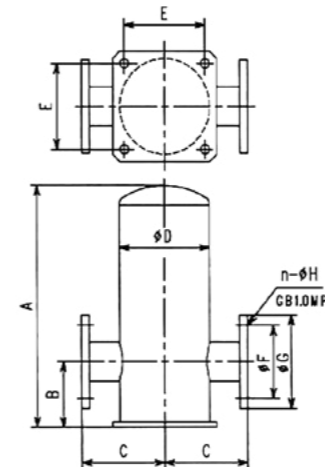
型式 Type	A	L	D	C	N-d	重量 Weight(kg)
KSE-50KU	272	380	130	105	4-15	19
KSE-65KU	400	460	155	130	4-15	29
KSE-80KU	400	460	180	145	4-19	30
KSE-100KU	488	470	200	165	8-19	42
KSE-125KU	550	592	200	165	8-19	51
KSE-150KU	550	592	265	230	8-19	52.5

排出消声器 (KM)
Discharge Silencer (KM)

型式 Type	口径 Bore	A	B	D	C	n-H	重量 Weight (kg)
KM-50	50A	600	140	165	125	4-19	11
KM-65	65A	700	165	185	145	4-19	16
KM-80	80A	900	190	200	160	8-19	21
KM-100	100A	1200	217	220	180	8-19	32
KM-125	125A	1400	260	250	210	8-23	44
KM-150	150A	1600	281	285	240	8-23	61

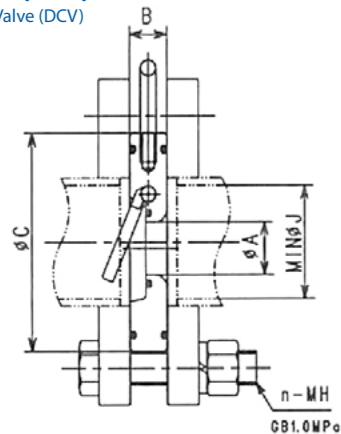


排出消声器 (RKM)
Discharge Silencer (RKM)



型式 Type	口径 Bore	A	B	C	D	E	F	G	n-H	重量 Weight(kg)
RKM-50	50A	420	120	150	140	130	125	165	4-19	15
RKM-65	65A	480	130	175	191	170	145	185	4-19	23
RKM-80	80A	595	145	200	216	190	160	200	8-19	39
RKM-100	100A	660	155	225	267	230	180	220	8-19	40
RKM-125	125A	800	190	250	280	240	210	250	8-23	50
RKM-150	150A	920	210	300	356	290	240	285	8-23	80

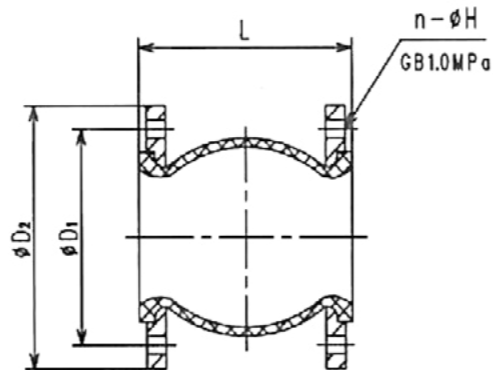
单向阀 (DCV)
Check Valve (DCV)



型式 Type	口径 Bore	A	B	C	J	n-H	重量 Weight (kg)
DCV-50	50A	25	19	104	52.7	4-M16*80	1.1
DCV-65	65A	36	19	124	65.9	4-M16*80	1.4
DCV-80	80A	46	19	134	78.1	8-M16*80	1.6
DCV-100	100A	67	19	159	102.3	8-M16*80	2.3
DCV-125	125A	88	21	190	126.6	8-M20*90	3.4
DCV-150	150A	108	24	220	151.0	8-M20*100	5.0

单向阀 (DCV)
Check Valve (DCV)

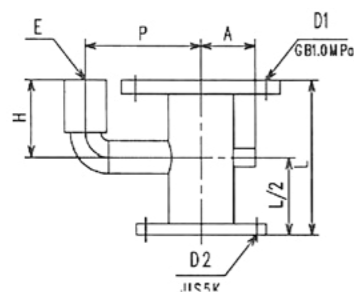
型式 Type	A	D1	D2	E	L	H	P
50K	55	50A	50A	G1	140	95	130
65K	60	65A	65A	G1	160	105	140
80K	70	80A	80A	G1 ¹ / ₄	180	115	150
100K	75	100A	100A	G1 ¹ / ₄	200	125	160
125K	85	125A	100A	G2	250	155	190
150K	100	150A	150A	G2	260	160	210



K 系列风机真空用附属品

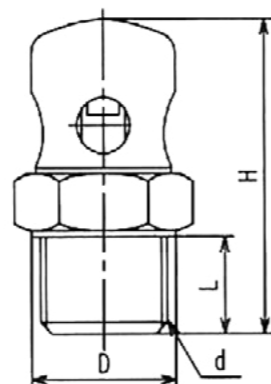
TYPE K VACUUM ACCESSORIES

Y 型进口接管 (YSS)
Y Shaper Reducer (YSS)



型式 Type	口径 Bore	D ₁	D ₂	L	N-φH	重量 Weight (kg)
-50	50A	125	165	105	4-φ17.5	5.5
-65	65A	145	185	115	4-φ17.5	6.0
-80	80A	160	200	135	8-φ17.5	7.5
-100	100A	180	220	150	8-φ17.5	9.0
-125	125A	210	250	165	8-φ22	11.5
-150	150A	240	285	180	8-φ22	15.0

真空调整阀 (VOCP-B)
Vacuum Breaker (VOCP-B)



口径 Bore	D	d	L	H
G1	40	G1	20	73
G1 ¹ / ₄	48	G1 ¹ / ₄	22	83
G2	68	G2	28	106

风机测试性能对比表

BLOWER PERFORMANCE COMPARISON TABLE

风机 型号 Type	编号 NO.	转速 Speed rpm	升压 Pressure kpa	流量 Suction volume m3/min	轴功率 Required power kw	容积比能 Volumetric proportion (kW/(m ³ ·min ⁻¹))	容积效率 Volume efficiency %	噪声 Noise dB(A)
65	B1K2309	2300	20	3.757	2.418	0.644	82.84	
			40	3.494	3.737	1.070	77.06	
			60	3.288	5.201	1.582	72.51	80.9
65K	KB190302	2300	20	3.799	1.754	0.462	89.05	
			40	3.726	2.962	0.795	87.33	
			60	3.623	4.284	1.182	84.91	78.5
65	B1JC209	1480	19.6	2.425	1.143	0.471	83.10	
			39.2	2.184	2.043	0.936	74.86	
			58.8	2.019	3.076	1.523	69.19	76.7
65k	KB190301	1480	20	2.387	1.045	0.438	86.94	
			40	2.263	1.912	0.845	82.40	
			60	2.180	2.828	1.297	79.41	73.2
100	D1K1408	2450	20	10.851	6.975	0.643	84.46	
			40	10.565	11.511	1.090	82.23	
			60	10.296	14.918	1.449	80.14	88.5
100K	KD190302	2450	20	11.179	5.130	0.459	93.31	
			40	10.970	8.542	0.779	91.56	
			60	10.764	11.995	1.114	89.85	83.7
100	D1JC301	1480	19.6	6.400	3.201	0.500	82.46	
			39.2	6.099	5.601	0.918	78.58	
			58.8	5.860	7.998	1.365	75.51	81.3
100K	KD190301	1480	20	6.684	2.798	0.419	92.36	
			40	6.418	4.893	0.762	88.68	
			60	6.252	7.078	1.132	86.39	77.1

结论: 通过试验数据对比, 在容积比能指标上, SSR 型 K 系列的比普通系列的节能10%~30%。容积效率指标上, SSR 型 K 系列的比普通系列的高5%~12%。噪音指标上, SSR 型 K 系列的比普通系列的低3~5 dB(A)。

CONCLUSION: According to experimental data analyse comparatively, K series blowers are more energy saving, the index of volumetric performance increase 10%-30%, more high volumetric efficiency, the index of volumetric efficiency increase by 5%-12%, more lower noise level, the index of noise level reduce by 3-5dB (A), than previous model.

机械工业风机产品质量监督检测中心
MACHINERY INDUSTRY BLOWER PRODUCT QUALITY SUPERVISION, INSPECTION AND DETECTION CENTER
沈阳蓝盛风机检测认证有限公司
SHENYANG LANSHENG BLOWER INSPECTION AND CERTIFICATION CO., LTD