

ZW 系列三叶罗茨鼓风机皮带传动性能参数表

Belt Drive ZW Series Three-Lobe Roots Type Blower Pressure Performance Date

ZW 系列罗茨风机

ZW series Roots type blower

产品简介

Product Introduction

ZW 系列三叶罗茨鼓风机是山东省章丘鼓风机股份有限公司在引进美国公司技术基础上，应用本公司 50 多年的设计和制造经验，自行设计、开发的更新换代产品，该产品在结构和性能上得到了极大的改善和提高，是具有最高性价比的产品。

ZW Series Three-Lobe Roots type blowers, which were based on the technology of U.S.A blowers, are the latest products of Shandong Zhangqiu Blower CO.,LTD, and have company's 50-plus years of design and manufacturing experience. ZW blowers with higher capacity and lower cost, have advanced performance and structure features.

产品特点

Product Features

- 效率高，体积小，重量轻，结构紧凑，使用维护方便
- 流量分档密，覆盖范围广，用户可选用最合适机型
- 采用空冷结构，单级压力78.4kPa 不用冷却水
- 叶轮采用先进结构，三叶叶形，面积利用系数高
- 采用精密硬齿面直齿同步齿轮，无键联接，定位可靠，运行平稳，噪音低，强度高，寿命长
- 可根据用户要求配套组装式隔声罩，使风机噪音降至85dB(A) 以下
- High efficiency, small size, light weight, compact structure, convenient operation and maintenance
- Flow sub-file encryption, extensive coverage, the user can choose the most appropriate models
- Air-cooled structure, single-stage pressure is up to 78.4kPa without cooling water
- Impeller with advanced structure, clover leaf, the area utilization factor
- Use of precision hardened straight-tooth synchronous gears, keyless connection, positioning, smooth operation, low noise, high strength, long life
- According to cus tomer's requirements,sound enclosures are avilable,which can make the sound levels up to 85dB(A)

性能表说明
 Performance table description

压力: 9.8~78.4 kPa
 流量: 0.22~59.21 m³/min
 轴功率: 0.18~71.59 kW

Pressure: 9.8 ~ 78.4 kPa
 Flow: 0.22 ~ 59.21 m³/min
 Shaft power: 0.18 ~ 71.59 kW

订货须知
 Ordering instructions

标准配套: 主机, 进口消声器(含滤清器), 排气消声器, 皮带轮, 皮带, 防护罩, 弹性接头, 泄压阀装置, 单向阀, 底座, 压力表, 地脚螺栓

可选附件: 电机, 电控柜, 隔声罩, 减振器等

Standard accessories: inlet silencer(with filter), pulleys,belts, belts guard, pressure relief valve assembly, base, pressure gauge, anchor bolts,discharge silencer,check valve,flexible joint

Optional accessories: motor, sound enclosure, vibration isolators, etc.

返回目录

风机型号 Model	口径 Bore	转速 rpm	各排气压力下的进口流量Qs (m ³ /min),轴功率La (kW)及所配电机功率Po (kW)												电机极数 Motor Pole															
			9.8kPa			19.6kPa			29.4kPa			39.2kPa				49kPa			58.8kPa			68.6kPa			78.4kPa					
			Qs	Po	La	Qs	Po	La	Qs	Po	La	Qs	Po	La		Qs	Po	La	Qs	Po	La	Qs	Po	La	Qs	Po	La			
ZW-202	32A	1250	0.44	0.18	0.75	0.32	0.30	0.75	0.22	0.42	0.75																4			
		1440	0.55	0.22	0.75	0.43	0.36	0.75	0.34	0.50	0.75	0.25	0.64	1.1														4		
		1760	0.74	0.29	0.75	0.62	0.46	0.75	0.52	0.63	1.1	0.44	0.80	1.1	0.37	0.97	1.5												4	
		1970	0.87	0.34	0.75	0.75	0.53	0.75	0.66	0.72	1.1	0.57	0.91	1.1	0.50	1.11	1.5												2	
ZW-204	50A	2400	1.13	0.45	0.75	1.01	0.69	1.1	0.91	0.92	1.1	0.83	1.15	1.5	0.76	1.39	2.2	0.69	1.62	2.2									2	
		2830	1.39	0.58	0.75	1.26	0.86	1.1	1.17	1.13	1.5	1.09	1.41	2.2	1.01	1.68	2.2	0.95	1.96	3									2	
		1250	0.78	0.27	0.75	0.58	0.48	0.75	0.42	0.68	1.1																		4	
		1440	0.98	0.32	0.75	0.77	0.56	0.75	0.61	0.80	1.1	0.48	1.04	1.5															4	
ZW-303	50A	1760	1.30	0.41	0.75	1.10	0.71	1.1	0.94	1.00	1.5	0.81	1.29	1.5	0.69	1.59	2.2												4	
		1970	1.52	0.49	0.75	1.31	0.82	1.1	1.15	1.14	1.5	1.02	1.47	2.2	0.90	1.80	2.2												2	
		2400	1.96	0.64	1.1	1.75	1.05	1.5	1.59	1.45	2.2	1.45	1.85	2.2	1.33	2.26	3	1.22	2.66	3									2	
		2800	2.37	0.80	1.1	2.16	1.27	2.2	2.00	1.74	2.2	1.86	2.21	3	1.74	2.68	3	1.63	3.15	4									2	
ZW-305	65A	1100	1.15	0.40	0.75	0.95	0.66	0.75	0.80	0.93	1.1	0.66	1.19	1.5															4	
		1300	1.40	0.50	0.75	1.19	0.82	1.1	1.02	1.13	1.5	0.88	1.44	2.2	0.75	1.76	2.2												4	
		1480	1.67	0.59	0.75	1.45	0.94	1.1	1.29	1.30	1.5	1.14	1.66	2.2	1.02	2.02	3												4	
		1760	2.08	0.68	1.1	1.87	1.11	1.5	1.70	1.53	2.2	1.56	1.96	2.2	1.43	2.38	3	1.32	2.81	4									4	
ZW-306	65A	2050	2.51	0.82	1.1	2.29	1.32	1.5	2.13	1.81	2.2	1.99	2.31	3	1.86	2.80	4	1.75	3.30	4	1.65	3.79	5.5	2.05	4.31	5.5			4	
		2320	2.91	0.95	1.1	2.69	1.51	2.2	2.53	2.07	3	2.39	2.63	3	2.26	3.19	4	2.15	3.75	5.5	2.05	4.31	5.5						2	
		1100	1.66	0.48	0.75	1.42	0.84	1.1	1.23	1.21	1.5	1.08	1.57	2.2	0.94	1.94	2.2												4	
		1300	2.06	0.62	0.75	1.82	1.05	1.5	1.64	1.48	2.2	1.48	1.92	2.2	1.34	2.35	3	1.22	2.78	4									4	
ZW-406	80A	1480	2.43	0.72	1.1	2.19	1.21	1.5	2.00	1.70	2.2	1.85	2.19	3	1.71	2.69	3	1.59	3.18	4										4
		1760	2.97	0.87	1.1	2.72	1.46	2.2	2.53	2.04	3	2.36	2.63	4	2.22	3.21	4	2.09	3.79	5.5	1.97	4.38	5.5						4	
		2050	3.60	1.05	1.5	3.37	1.73	2.2	3.19	2.41	3	3.03	3.09	4	2.90	3.77	5.5	2.78	4.45	5.5	2.66	5.13	7.5						4	
		2320	4.15	1.23	1.5	3.91	2.00	3	3.73	2.77	4	3.58	3.54	5.5	3.45	4.31	5.5	3.32	5.08	7.5	3.21	5.85	7.5						2	
ZW-306	65A	1100	2.15	0.61	1.1	1.86	1.08	1.5	1.64	1.54	2.2	1.45	2.01	3	1.28	2.47	3												4	
		1300	2.66	0.75	1.1	2.37	1.30	1.5	2.15	1.85	2.2	1.96	2.40	3	1.80	2.95	4	1.65	3.49	4									4	
		1480	3.15	0.88	1.1	2.86	1.51	2.2	2.64	2.14	3	2.45	2.77	4	2.28	3.40	4	2.13	4.03	5.5									4	
		1760	3.89	1.10	1.5	3.59	1.85	2.2	3.37	2.60	3	3.18	3.35	4	3.01	4.10	5.5	2.86	4.85	5.5									4	
ZW-406	80A	2050	4.94	1.37	2.2	4.35	2.25	3	4.12	3.12	4	3.93	4.00	5.5	3.76	4.87	5.5	3.61	5.74	7.5										4
		2320	5.35	1.59	2.2	5.05	2.58	3	4.83	3.57	4	4.64	4.55	5.5	4.47	5.64	7.5	4.32	6.53	7.5									2	
		1000	2.92	0.81	1.1	2.56	1.43	2.2	2.28	2.05	3	2.04	2.67	3	1.84	3.29	4	1.65	3.91	5.5									4	
		1300	4.06	1.13	1.5	3.70	1.93	2.2	3.42	2.74	4	3.18	3.54	4	2.97	4.35	5.5	2.78	5.15	7.5	2.61	5.96	7.50						4	
ZW-406	80A	1440	4.62	1.25	1.5	4.25	2.15	3	3.96	3.05	4	3.72	3.95	5.5	3.50	4.85	5.5	3.31	5.75	7.5	3.14	6.64	7.50						4	
		1760	5.84	1.59	2.2	5.47	2.69	4	5.18	3.79	5.5	4.94	4.89	5.5	4.73	5.99	7.5	4.54	7.09	11	4.36	8.18	11						4	
		2040	6.95	1.95	3	6.58	3.23	4	6.29	4.50	5.5	6.05	5.78	7.5	5.84	7.05	11	5.65	8.33	11	5.47	9.60	11						4	

进口流量是指在标准吸入状态下(绝对压力101.325kPa,温度20°C)的进口空气流量
 Performance based on inlet air at standard temperature of 20°C, an ambient pressure of 101.325kPa

ZW 系列三叶罗茨鼓风机皮带传动性能参数表

Belt Drive ZW Series Three-Lobe Roots Type Blower Pressure Performance Date

风机型号 Model	口径 Bore	转速 rpm	各排气压力下的进口流量Qs (m³/min), 轴功率La (kW) 及所配电机功率Po (kW)																												
			9.8kPa			19.6kPa			29.4kPa			39.2kPa			49kPa			58.8kPa			68.6kPa			78.4kPa							
			Qs	La	Po	Qs	La	Po	Qs	La	Po	Qs	La	Po	Qs	La	Po	Qs	La	Po	Qs	La	Po	Qs	La	Po	Qs	La	Po		
ZW-506	100A	980	4.16	1.31	1.5	3.81	2.13	3	3.53	2.95	4	3.30	3.77	5.5	3.09	4.59	5.5	2.85	5.41	7.5	4.03	6.62	7.5	2.64	6.23	7.5	2.50	7.05	11	4	
		1200	5.29	1.59	2.2	4.93	2.60	3	4.66	3.60	4	4.43	4.60	5.5	4.22	5.61	7.5	4.03	6.62	7.5	4.03	6.62	11	3.70	7.62	11	3.70	8.62	11	4	
		1450	6.57	2.03	3	6.21	3.25	4	5.94	4.46	5.5	5.71	6.67	7.5	5.50	6.89	11	5.32	8.10	11	5.14	9.32	11	5.14	9.32	11	4.98	10.53	15	4	
		1760	8.16	2.59	3	7.80	4.07	5.5	7.53	5.54	7.5	7.30	7.01	11	7.09	8.49	11	6.90	9.96	11	6.73	11.43	15	6.57	12.90	15	6.57	12.90	15	4	
ZW-508A	125A	980	6.08	1.67	2.2	5.66	2.83	4	5.35	3.98	5.5	5.08	5.14	7.5	4.84	6.29	7.5	4.63	7.45	11	4.43	8.60	11	4.25	9.76	11	4.25	9.76	11	4	
		1200	7.71	2.17	3	7.29	3.59	4	6.96	5.00	5.5	6.68	6.41	7.5	6.44	7.83	11	6.22	9.24	11	6.02	10.65	15	5.83	12.07	15	5.83	12.07	15	4	
		1450	9.53	2.60	3	9.10	4.31	5.5	8.78	6.01	7.5	8.50	7.72	11	8.26	9.43	11	8.04	11.14	15	7.82	12.85	15	7.64	14.55	18.5	7.64	14.55	18.5	4	
		1760	11.78	3.30	4	11.36	5.38	7.5	11.03	7.45	11	10.76	9.52	11	10.51	11.59	15	10.29	13.67	18.5	10.06	15.74	18.5	9.87	17.81	22	9.87	17.81	22	4	
ZW-610A	150A	800	13.75	4.12	5.5	13.32	6.51	7.5	13.00	8.90	11	12.72	11.29	15	12.48	13.68	18.5	12.26	16.07	18.5	12.05	18.46	22	11.43	20.85	30	11.43	20.85	30	4	
		980	12.46	3.26	4	11.74	5.57	7.5	11.19	7.87	11	10.72	10.18	15	10.31	12.48	15	9.94	14.79	18.5	9.59	17.09	22							4	
		1100	14.20	3.77	5.5	13.48	6.35	7.5	12.93	8.94	11	12.46	11.53	15	12.05	14.12	18.5	11.68	16.70	22	11.32	19.29	22							4	
		1300	17.10	4.70	5.5	16.38	7.76	11	15.83	10.81	15	15.36	13.87	18.5	14.95	16.93	22	14.58	20.03	30	14.25	23.04	30							4	
ZW-709	150A	1460	19.42	5.47	7.5	18.70	8.91	11	18.15	12.34	15	17.68	15.77	18.5	17.27	19.21	22	16.89	22.64	30	16.55	26.07	30							4	
		1650	22.03	6.36	7.5	21.31	10.21	15	20.75	14.07	18.5	20.29	17.93	22	19.87	21.78	30	19.50	25.64	30	19.14	29.49	37							4	
		1850	25.07	7.60	11	24.35	11.95	15	23.80	16.30	18.5	23.33	20.65	30	22.92	25.01	30	22.54	29.36	37										4	
		800	12.93	3.19	4	12.12	5.62	7.5	11.49	8.05	11	10.97	10.48	15	10.50	12.90	15	9.90	15.33	18.5	9.34	17.76	22	8.60	20.19	30	8.60	20.19	30	4	
ZW-712A	200A	980	16.27	4.23	5.5	15.46	7.20	11	14.84	10.18	15	14.31	13.16	15	13.85	16.14	18.5	13.43	19.11	22	13.04	22.09	30	12.68	25.07	30	12.68	25.07	30	4	
		1170	19.83	5.28	7.5	19.03	8.84	11	18.41	12.39	15	17.89	15.94	18.5	17.43	19.49	22	17.01	23.05	30	16.63	26.60	30	16.27	30.15	37	16.27	30.15	37	4	
		1340	22.99	6.43	7.5	22.19	10.50	15	21.57	14.57	18.5	21.05	18.63	22	20.59	22.70	30	20.17	26.77	30	19.79	30.84	37	19.43	34.91	45	19.43	34.91	45	4	
		1470	25.44	7.38	11	24.65	11.84	15	24.04	16.31	18.5	23.53	20.77	30	23.08	25.24	30	22.67	29.70	37	22.29	34.17	45	21.94	38.64	45	21.94	38.64	45	4	
ZW-816	200A	1650	28.41	8.52	11	27.62	13.47	15	27.02	18.42	22	26.50	23.37	30	26.05	28.32	37	25.64	33.26	37	25.27	38.21	45	24.91	43.16	55	24.91	43.16	55	4	
		1760	30.83	9.83	11	30.04	15.18	18.5	29.44	20.52	30	28.92	25.86	30	28.47	31.20	37	28.06	36.55	45	27.68	41.92	55	27.33	47.26	55	27.33	47.26	55	4	
		800	16.77	3.96	5.5	15.83	7.07	11	15.11	10.18	15	14.49	13.29	15	13.95	16.40	18.5	13.47	19.51	22										4	
		980	21.18	4.64	7.5	20.20	8.49	11	19.45	12.33	15	18.82	16.18	22	18.26	20.02	30	17.75	23.86	30										4	
ZW-816	200A	1170	25.74	5.86	7.5	24.76	10.45	15	24.01	15.04	18.5	23.38	19.63	30	22.82	24.22	30	22.31	28.81	37	22.31	28.81	37							4	
		1340	29.82	7.06	11	28.85	12.31	15	28.09	17.57	22	27.46	22.83	30	26.90	28.09	37	26.39	33.34	45										4	
		1470	32.94	8.06	11	31.97	13.82	18.5	31.22	19.59	30	30.58	25.36	30	30.02	31.12	37	29.52	36.89	45										4	
		1650	36.79	9.39	15	35.81	15.79	22	35.06	22.18	30	34.42	28.58	37	33.86	34.97	45	33.36	41.37	55										4	
ZW-816	200A	1760	39.91	10.56	15	38.93	17.47	22	38.18	24.37	30	37.55	31.28	37	36.99	38.18	45	36.48	45.08	55										4	
		800	25.41	6.61	7.5	23.85	11.63	15	22.79	16.64	18.5	21.69	21.66	30	20.93	26.67	30	19.98	31.69	37										4	
		880	28.51	7.24	11	26.95	12.6	15	25.89	17.83	22	24.79	23.22	30	24.03	28.72	37	23.08	34.21	37											4
		1060	35.41	9.36	11	33.85	15.82	18.5	32.79	22.26	30	31.69	28.79	37	30.93	35.33	45	29.98	41.89	55											4
ZW-816	200A	1170	39.61	10.46	15	38.05	17.63	22	36.99	24.79	30	35.89	32.27	37	35.13	39.48	45	34.18	46.76	55										4	
		1270	43.41	12.01	15	41.85	19.79	22	40.79	27.57	30	39.69	35.39	45	38.93	43.44	55	37.98	51.36	55										4	
		1375	47.51	13.02	15	45.95	21.75	30	44.89	30.23	37	43.79	39.74	45	43.03	47.45	55	42.08	56.15	75										4	
		1550	54.21	15.93	18.5	52.65	25.78	30	51.59	35.47	45	50.49	45.28	55	49.73	54.98	75	48.78	64.85	75											4
1680	59.21	18.81	22	57.65	29.08	37	56.59	39.9	45	55.49	50.62	55	54.73	61.02	75	53.78	71.59	90											4		

进口流量是指在标准吸入状态下(绝对压力101.325kPa,温度20°C)的进口空气流量
Performance based on inlet air at standard temperature of 20°C, an ambient pressure of 101.325kPa

ZW 系列三叶罗茨鼓风机皮带传动真空性能参数表

Belt Drive ZW Series Three-Lobe Roots Type Blower Vacuum Performance Data

风机型号 Model	口径 Bore	转速 rpm	各真空度下的进口流量Qs (m³/min), 轴功率La (kW) 及所配电机功率Po (kW)																												
			-9.8kPa			-19.6kPa			-24.5kPa			-29.4kPa			-34.3kPa			-39.2kPa			-44.1kPa			-49kPa							
			Qs	La	Po	Qs	La	Po	Qs	La	Po	Qs	La	Po	Qs	La	Po	Qs	La	Po	Qs	La	Po	Qs	La	Po	Qs	La	Po		
ZW-202	32A	1250	0.43	0.18	0.75	0.27	0.30	0.36	0.75																					4	
		1440	0.54	0.22	0.75	0.38	0.36	0.75	0.31	0.43	0.75	0.24	0.50	0.75																4	
		1760	0.73	0.29	0.75	0.57	0.46	0.75	0.50	0.54	0.75	0.42	0.63	0.75	0.35	0.71	1.1													4	
		1970	0.86	0.34	0.75	0.70	0.53	0.75	0.63	0.63	1.1	0.56	0.72	1.1	0.48	0.82	1.1													2	
ZW-204	50A	2400	1.11	0.45	0.75	0.96	0.69	1.1	0.89	0.80	1.1	0.81	0.92	1.1	0.74	1.04	1.5	0.66	1.15	1.5										2	
		2830	1.37	0.58	0.75	1.21	0.86	1.1	1.14	1.00	1.5	1.07	1.13	1.5	0.99	1.27	2.2	0.92	1.41	2.2										2	
		1250	0.76	0.27	0.75	0.50	0.48	0.75	0.38	0.58	0.75																				4
		1440	0.95	0.32	0.75	0.69	0.56	0.75	0.58	0.67	0.75	0.45	0.80	1.1																	4
ZW-204	50A	1760	1.28	0.41	0.75	1.02	0.71	1.1	0.90	0.85	1.1	0.78	1.00	1.5	0.65	1.15	1.5													4	
		1970	1.49	0.49	0.75	1.23	0.82	1.1	1.11	0.98	1.14	0.8																			

ZW 系列三叶罗茨鼓风机皮带传动真空性能参数表

Belt Drive ZW Series Three-Lobe Roots Type Blower Vacuum Performance Data

风机型号 Model	口径 Bore	转速 rpm	各真空度下的进口流量 Q_s (m^3/min), 轴功率 La (kW) 及所配电机功率 Po (kW) Inlet Flow Q_s (m^3/min), Shaft Power La (kW) and Motor Power Po (kW)												电机极数 Motor Pole									
			-9.8kPa			-19.6kPa			-29.4kPa			-39.2kPa				-49kPa								
			La	Po	Qs	La	Po	Qs	La	Po	Qs	La	Po	Qs		La	Po	Qs						
ZW-506	100A	980	4.12	1.31	3.45	2.54	3	3.24	2.95	4	3.03	3.36	4	2.80	3.77	5.5	2.56	4.18	5.5	4				
		1200	5.25	1.59	2.2	4.79	2.60	3	4.38	3.10	4	4.37	3.60	4	4.15	4.11	5.5	3.93	4.61		5.5			
		1450	6.53	2.03	3	6.07	3.25	4	5.86	3.85	5.5	5.65	4.46	5.5	5.44	5.07	7.5	5.21	5.67		7.5			
		1760	8.11	2.59	3	7.66	4.07	5.5	7.45	4.80	5.5	7.24	5.54	7.5	7.02	6.28	7.5	6.80	7.01		11	6.55	7.75	11
		2030	9.47	3.16	4	9.00	4.06	5.5	8.78	5.71	7.5	8.56	6.56	7.5	8.34	7.41	11	8.11	8.26		11	7.86	9.11	11
		980	6.02	1.67	2.2	5.50	2.83	4	5.26	3.41	4	5.02	3.98	5.5	4.77	4.56	5.5	4.51	5.14		7.5	4.23	5.71	7.5
ZW-508A	125A	1200	7.66	2.17	3	7.12	3.59	4	6.87	4.29	5.5	6.63	4.99	5.5	6.37	5.71	7.5	6.11	6.41	7.5	5.83	7.12	11	
		1450	9.47	2.60	3	8.94	4.31	5.5	8.69	5.16	7.5	8.44	6.01	7.5	8.19	6.87	11	7.93	7.72	11	7.65	8.58	11	
		1760	11.73	3.30	4	11.19	5.58	7.5	10.95	6.41	7.5	10.70	7.45	11	10.45	8.49	11	10.18	9.52	11	9.91	10.56	15	
		2030	13.69	4.12	5.5	13.16	6.51	7.5	12.91	7.71	11	12.66	8.90	11	12.41	10.10	15	12.15	11.29	15	11.87	12.49	15	
		800	9.73	2.65	3	8.84	4.53	5.5	8.42	5.47	7.5	8.01	6.41	7.5	7.58	7.36	11	7.14	8.30	11	6.67	9.24	11	
		980	12.37	3.26	4	11.47	5.57	7.5	11.05	6.72	7.5	10.63	7.87	11	10.20	9.03	11	9.76	10.18	15	9.29	11.33	15	
ZW-610A	150A	1100	14.11	3.77	5.5	13.20	6.35	7.5	12.78	7.65	11	12.37	8.94	11	11.94	10.24	15	11.49	11.53	15	11.02	12.82	15	
		1300	17.01	4.70	5.5	16.10	7.76	11	15.68	9.28	11	15.26	10.81	15	14.84	12.34	15	14.39	13.87	18.5	13.92	15.40	18.5	
		1450	19.33	5.47	7.5	18.42	8.91	11	18.00	10.22	15	17.58	12.34	15	17.15	14.06	18.5	16.71	15.78	18.5	16.24	17.49	22	
		1640	21.94	6.36	7.5	21.03	10.21	15	20.61	12.14	15	20.19	14.07	18.5	19.76	16.00	18.5	19.32	17.93	22	18.85	19.86	22	
		1850	24.98	7.60	11	24.07	11.95	15	23.65	14.13	18.5	23.23	16.30	18.5	22.80	18.48	22	22.36	20.65	30	21.89	22.83	30	
		800	12.82	3.19	4	11.80	5.62	7.5	11.32	6.84	11	10.85	8.05	11	10.36	9.27	11	9.86	10.48	15	9.32	11.70	15	
ZW-709	150A	980	16.17	4.23	5.5	15.15	7.20	11	14.67	8.69	11	14.20	10.18	15	13.71	11.67	15	13.20	13.15	15	12.66	14.65	18.5	
		1170	19.73	5.28	7.5	18.71	8.84	11	18.24	10.62	15	17.77	12.39	15	17.29	14.17	18.5	16.79	15.94	18.5	16.25	17.72	22	
		1340	22.89	6.43	7.5	21.87	10.50	15	21.40	12.54	15	20.93	14.57	18.5	20.45	16.61	18.5	19.95	18.63	22	19.42	20.68	30	
		1470	25.34	7.38	11	24.34	11.84	15	23.88	14.07	18.5	23.41	16.31	18.5	22.94	18.54	22	22.45	20.77	30	21.92	23.01	30	
		1630	28.31	8.52	11	27.32	13.47	15	26.85	15.95	18.5	26.39	18.43	22	25.92	20.90	30	25.42	23.38	30	24.90	25.85	30	
		1760	30.73	9.83	11	29.73	15.18	18.5	29.27	17.86	22	28.81	20.52	30	28.33	23.20	30	27.84	25.86	30	27.31	28.55	37	
ZW-712A	200A	800	16.65	3.96	5.5	15.46	7.07	11	14.91	8.63	11	14.36	10.18	15	13.80	11.74	15	13.21	13.29	15	12.58	14.85	18.5	
		980	21.06	4.64	7.5	19.82	8.49	11	19.25	10.41	15	18.68	12.33	15	18.10	14.25	18.5	17.50	16.18	22	16.86	18.10	22	
		1170	25.62	5.86	7.5	24.38	10.45	15	23.81	12.75	15	23.25	15.04	18.5	22.67	17.34	22	22.06	19.63	30	21.43	21.93	30	
		1340	29.70	7.06	11	28.47	12.31	15	27.90	14.94	18.5	27.33	17.57	22	26.75	20.20	30	26.15	22.83	30	25.51	25.46	30	
		1470	32.82	8.06	11	31.59	13.82	18.5	31.02	16.71	22	30.45	19.59	30	29.87	22.47	30	29.27	25.36	30	28.63	28.24	37	
		1630	36.66	9.39	15	35.43	15.79	22	34.86	18.99	22	34.29	22.18	30	33.71	25.38	30	33.11	28.58	37	32.47	31.77	37	
ZW-816	200A	1760	39.79	10.56	15	38.55	17.47	22	37.98	20.92	30	37.41	24.37	37	36.83	27.82	37	36.23	31.28	37	35.59	34.73	45	
		800	25.15	6.61	7.5	23.10	11.63	15	22.43	14.14	18.5	21.46	16.64	22	20.66	19.15	22	19.55	21.66	30				
		880	28.23	7.24	11	26.18	12.6	15	25.51	15.75	18.5	24.54	17.83	22	23.74	20.80	30	22.63	23.22	30	21.46	26.12	30	
		1060	35.13	9.36	11	33.08	15.82	18.5	32.41	19.78	22	31.44	22.26	30	30.64	25.97	30	29.53	28.79	37	28.36	32.39	37	
		1170	39.33	10.46	15	37.28	17.63	22	36.61	22.04	30	35.64	24.79	30	34.84	28.92	37	33.73	32.27	37	32.56	36.30	45	
		1270	43.13	12.01	15	41.08	19.79	22	40.41	24.74	30	39.44	27.57	37	37.53	35.39	45	36.36	39.81	45	34.73	43.44	55	
ZW-816	200A	1375	47.23	13.02	15	45.18	21.75	30	44.51	27.19	30	43.54	30.23	37	42.74	35.27	45	41.63	39.74	45	40.46	44.71	55	
		1550	53.93	15.93	18.5	51.88	25.78	30	51.21	32.23	37	50.24	35.47	45	49.44	41.38	55	48.33	45.28	55	47.16	50.94	55	
		1680	58.93	18.81	22	56.88	29.08	37	56.21	36.35	45	55.24	39.9	45	54.44	46.55	55	53.33	50.62	55	52.16	56.95	75	

进口流量是指在标准吸入状态下(绝对压力101.325kPa,温度20°C)的进口空气流量
Performance based on inlet air at standard temperature of 20°C, an ambient pressure of 101.325kPa

ZW 系列三叶罗茨鼓风机直联传动性能参数表

Direct Drive ZW Series Three-Lobe Roots Type Blower Pressure Performance Data

风机型号 Model	口径 Bore	转速 rpm	各真空度下的进口流量 Q_s (m^3/min), 轴功率 La (kW) 及所配电机功率 Po (kW) Inlet Flow Q_s (m^3/min), Shaft Power La (kW) and Motor Power Po (kW)												电机极数 Motor Pole									
			9.8kPa			19.6kPa			29.4kPa			39.2kPa				49kPa								
			La	Po	Qs	La	Po	Qs	La	Po	Qs	La	Po	Qs		La	Po	Qs						
ZW-303	50A	1400	1.55	0.57	0.75	1.33	0.91	1.1	1.17	1.24	1.5	1.03	1.58	2.2	0.90	1.92	2.26	3				4		
		1400	2.27	0.69	1.1	2.03	1.16	1.5	1.84	1.62	2.2	1.69	2.09	3	1.55	2.55	3	1.42	3.02	4				
		1400	2.94	0.82	1.1	2.65	1.41	2.2	2.43	2.00	3	2.24	2.60	4	2.07	3.20	4	1.92	3.79	5.5	1.77		4.38	5.5
		1440	4.62	1.25	1.5	4.25	2.15	3	3.96	3.05	4	3.72	3.66	5.5	3.50	4.85	5.5	3.31	5.75	7.5	3.12		6.65	7.5
		1440	6.52	2.03	3	6.16	3.23	4	5.89	4.44	5.5	5.66	5.64	7.5	5.45	6.85	11	5.26	8.05	11	5.09		9.26	11
		1440	9.53	2.89	3	9.10	4.28	5.5	8.78	5.98	7.5	8.50	7.67	11	8.26	9.37	11	8.04	11.07	15	7.80		12.76	15
ZW-610A	150A	980	16.27	4.23	5.5	15.46	7.20	11	14.84	10.18	15	14.31	13.15	15	13.85	16.13	18.5	13.43	19.11	22	13.04	22.08	30	
		980	21.18	4.64	7.5	18.70	8.91	11	18.15	12.34	15	17.68	15.78	18.5	17.27	19.21	22	16.89	22.64	30	16.51	26.08	30	
		980	25.44	7.38	11	24.65	11.84	15	24.04	16.31	18.5	23.53	20.77	30	23.08	25.24	30	22.67	29.70	37	22.29	34.17	45	
		980	32.94	8.06	11	31.97	13.82	18.5	31.22	19.59	30	30.58	25.36	30	30.02	31.12	37	29.52	36.89	45	29.02	42.66	55	
		980	32.35	8.65	11	30.79	14.63	18.5	29.73	20.58	30	28.63	26.62	30	27.87	32.66	37	26.92	38.73	45	26.04	45.18	55	
		1470	51.17	15.11	18.5	49.61	24.45	30	48.85	33.64	37	47.46	42.94	55	46.69	52.14	75	45.74	61.50	75	44.86	71.75	90	

进口流量是指在标准吸入状态下(绝对压力101.325kPa,温度20°C)的进口空气流量
Performance based on inlet air at standard temperature of 20°C, an ambient pressure of 101.325kPa

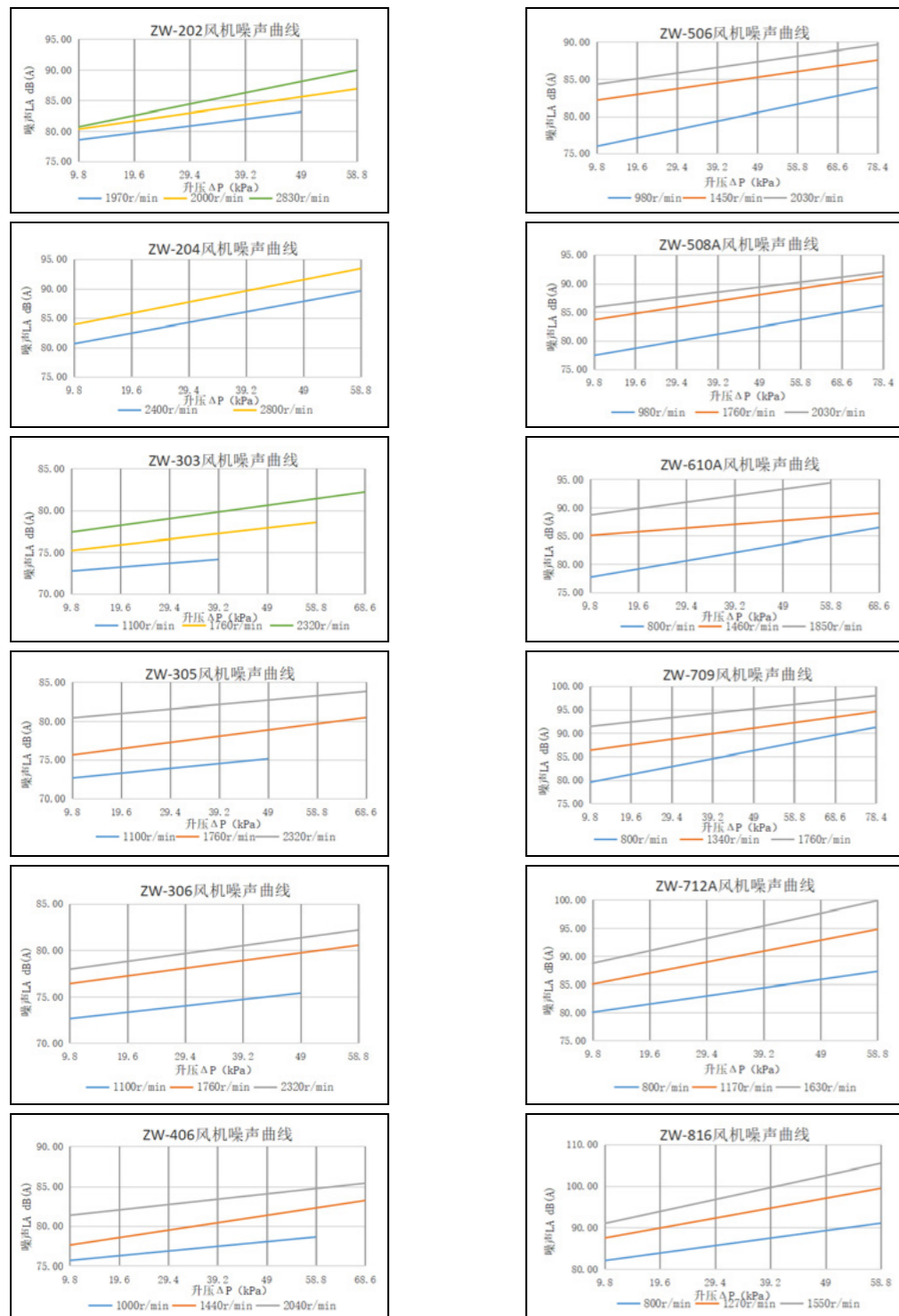
ZW 系列三叶罗茨鼓风机直联传动真空性能参数表

Direct Drive ZW Series Three-Lobe Roots Type Blower Vacuum Performance Data

风机型号 Model	口径 Bore	转速 rpm	各真空度下的进口流量 Q_s (m^3/min											
---------------	------------	-----------	------------------------------	--	--	--	--	--	--	--	--	--	--	--

ZW 系列三叶罗茨鼓风机噪声值 dB(A)

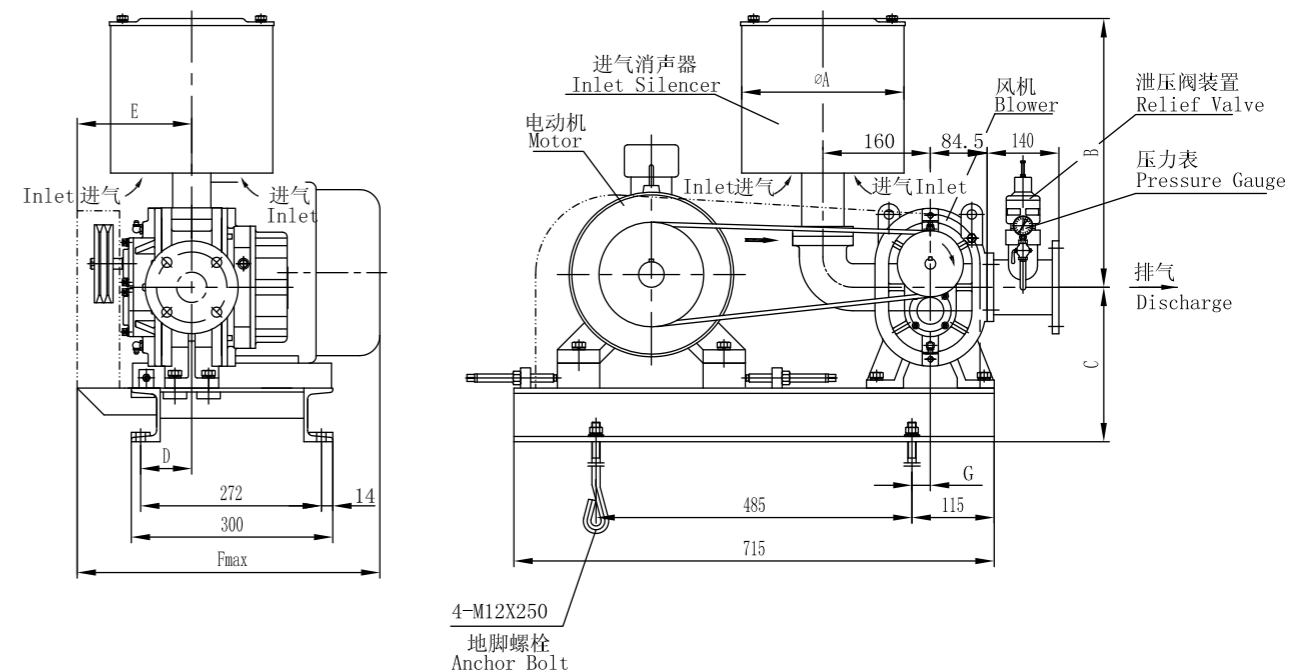
ZW Series Three-Lobe Roots Type Blower Noise Level



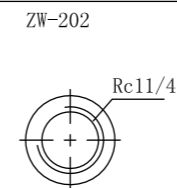
注：上述数据是按照GB/T 2888《风机和罗茨鼓风机噪声测量方法》测得的数据
 Note: The above data were tested according to the noise measurement method of GB/T2888 Blower and Roots blower

ZW 系列三叶罗茨鼓风机机组皮带传动外形安装尺寸图 (正压应用)

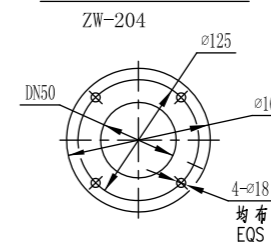
Belt Drive ZW Series Three-Lobe Roots Type Blower Packages Outline Drawing (Pressure Application)



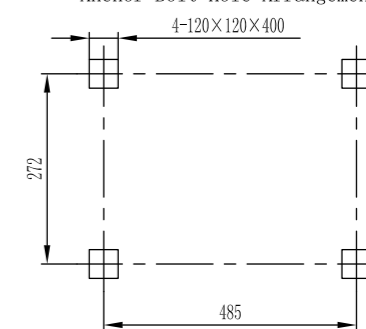
排气口连接尺寸
Outlet Flange Size



排气口连接尺寸
Outlet Flange Size



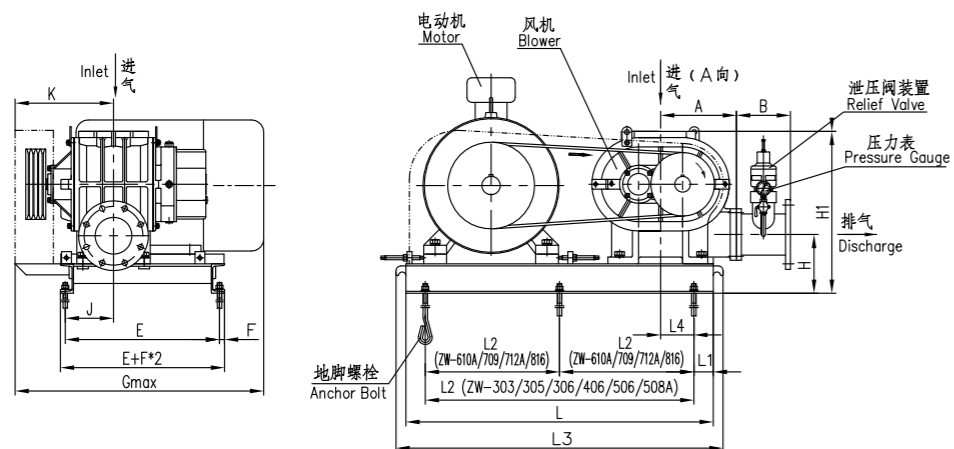
地脚螺栓预留孔布置图
Anchor Bolt Hole Arrangement Diagram



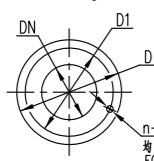
风机型号 Blower Type	A	B	C	D	E	Fmax	G	机组重量 (kg) (不含电机) Unit Weight (Without Motor) Kg
ZW-202	190	330	204	63	174	492	28.5	50
ZW-204	265	400	230	76	187	492	20	63

ZW 系列三叶罗茨鼓风机机组皮带传动外形安装尺寸图 (正压应用)

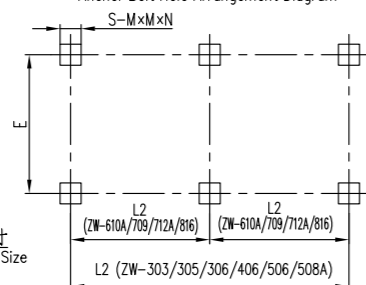
Belt Drive ZW Series Three-Lobe Roots Type Blower Packages Outline Drawing
(Pressure Application)



排气口法兰尺寸
Outlet Flange Size



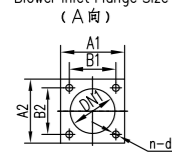
地脚螺栓预留孔布置图
Anchor Bolt Hole Arrangement Diagram



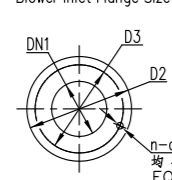
地脚螺栓规格
Anchor Bolt Type

风机型号 Blower Type	地脚螺栓规格 Anchor Bolt Type
ZW-303	M12×250
ZW-305	M12×250
ZW-306	M12×250
ZW-406	M12×250
ZW-506	M16×300
ZW-508A	M16×300
ZW-610A	M16×300
ZW-709	M16×300
ZW-712A	M16×300
ZW-816	M16×300

风机进口法兰尺寸
Blower Inlet Flange Size (A向)



风机进口法兰尺寸
Blower Inlet Flange Size

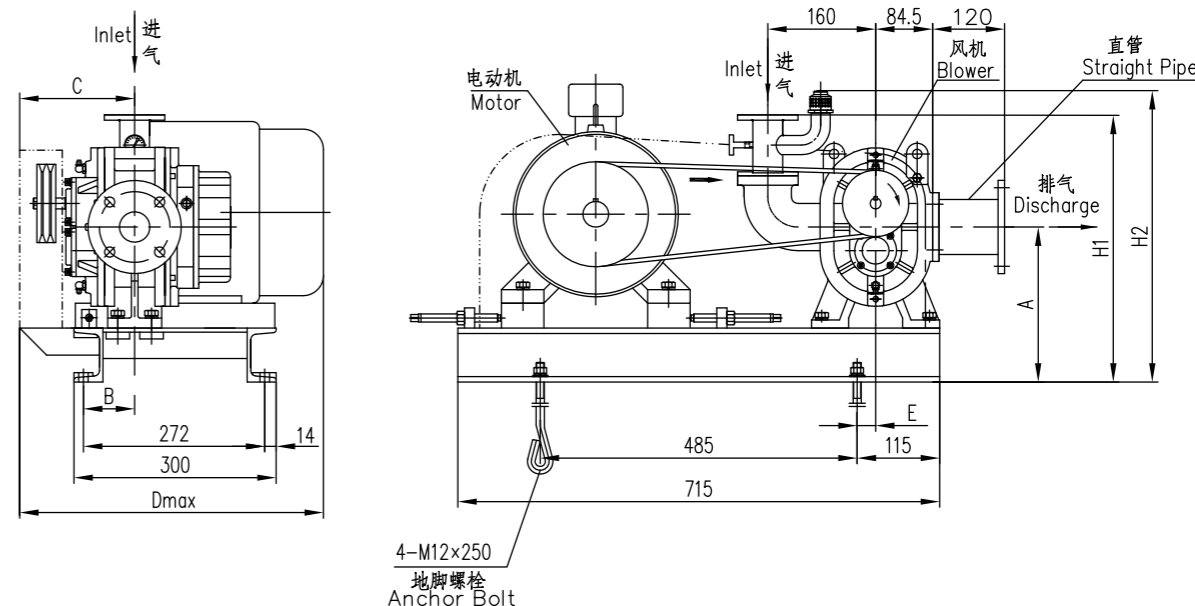


注：本图拆去了进口消声器

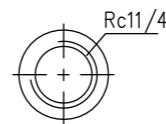
风机型号 Blower Type	A	B	E	F	Gmax	J	K	L	L1	L2	L3	L4	H	H1	n-d	DN	D1	D	S	M	N	DN1	A1	A2	B1	B2	D2	D3	n-d1	机组重量(kg) (不含电机) Unit Weight (kg) (Without Motor)
ZW-303	170	140	387	14	545	102	221	730	110	510	810	0	145	350	4-φ18	50	φ125	φ165	4	120	400	50	100	80	75	60	/	/	4-M10	85
ZW-305	170	150	387	14	550	102	221	730	110	510	810	0	150	355	4-φ18	65	φ145	φ185	4	120	400	65	110	110	80	80	/	/	4-M10	95
ZW-306	170	150	387	14	550	113	247	730	110	510	810	0	150	355	4-φ18	65	φ145	φ185	4	120	400	65	110	110	80	80	/	/	4-M10	100
ZW-406	180	180	417	14	650	111	250	795	112.5	570	875	19	165	400	8-φ18	80	φ160	φ200	4	120	400	80	152	152	100	114	/	/	4-M12	145
ZW-506	220	180	470	20	740	125	295	910	125	660	990	39.5	190	475	8-φ18	100	φ180	φ220	4	150	500	100	180	135	130	80	/	/	4-M16	200
ZW-508A	220	200	470	20	815	125	295	910	125	660	990	39.5	190	475	8-φ18	125	φ210	φ250	4	150	500	100	180	180	130	130	/	/	4-M16	215
ZW-610A	260	220	545	20	880	215	360	1020	110	400	1100	66	225	580	8-φ22	150	φ240	φ285	6	150	500	125	/	/	/	250	210	8-M16	340	
ZW-709	310	220	590	20	980	215	385	1255	127.5	500	1335	87.5	235	660	8-φ22	150	φ240	φ285	6	150	500	150	200	200	150	150	/	/	4-M20	470
ZW-712A	310	250	630	20	1000	196	402	1255	127.5	500	1335	87.5	235	660	8-φ22	200	φ295	φ340	6	150	500	150	/	/	/	285	240	8-M20	500	
ZW-816	356	250	740	20	1091	300	455	1320	160	500	1400	77.5	262	774	8-φ22	200	φ295	φ340	6	150	500	200	/	/	/	340	295	8-M20	735	

ZW 系列三叶罗茨鼓风机机组皮带传动外形安装尺寸图 (真空应用)

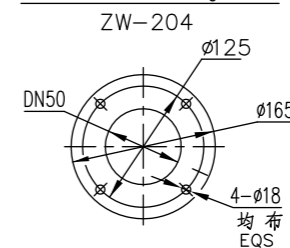
Belt Drive ZW Series Three-Lobe Roots Type Blower Packages Outline Drawing
(Vacuum Application)



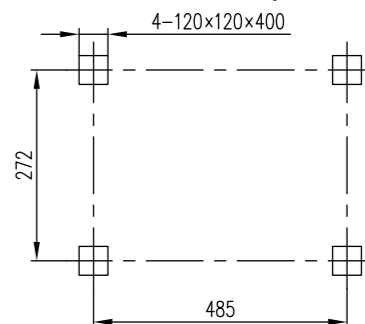
进、排气口连接尺寸
Inlet & Outlet Flange Size
ZW-202



进、排气口连接尺寸
Inlet & Outlet Flange Size
ZW-204



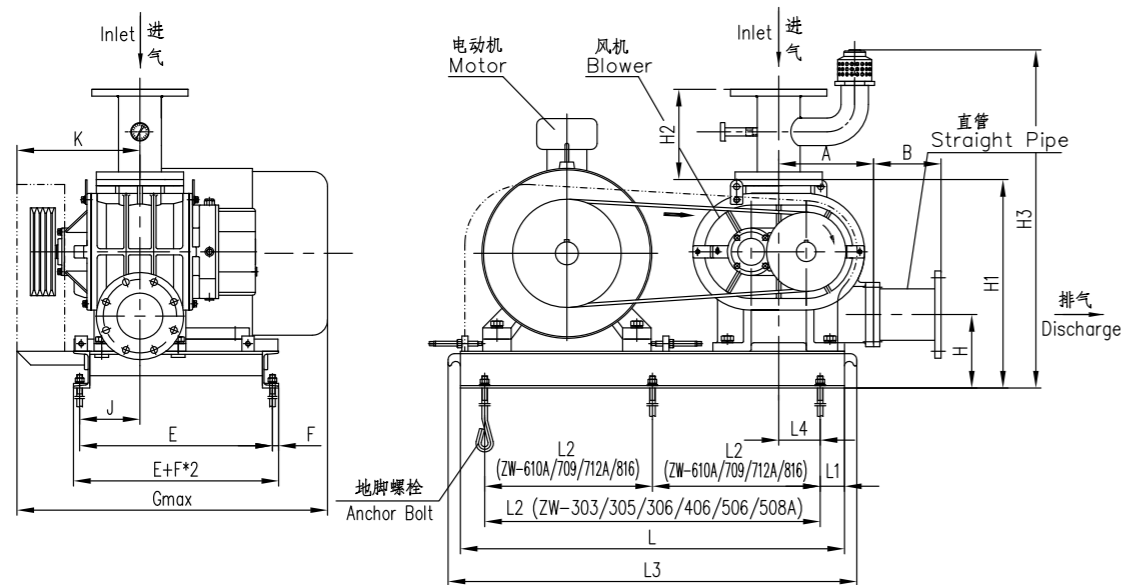
地脚螺栓预留孔布置图
Anchor Bolt Hole Arrangement Diagram
4-120x120x400



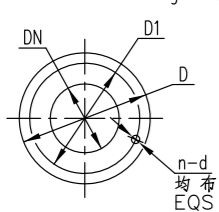
风机型号 Blower Type	A	B	C	D	Emax	H1	H2	机组重量(kg) (不含电机) Unit Weight (kg) (Without Motor) Kg
ZW-202	204	63	174	492	28.5	374	518	47
ZW-204	230	76	187	492	20	470	592	60

ZW 系列三叶罗茨鼓风机机组皮带传动外形安装尺寸图 (真空应用)

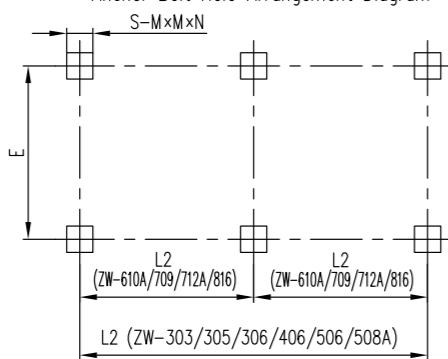
Belt Drive ZW Series Three-Lobe Roots Type Blower Packages Outline Drawing
(Vacuum Application)



进、排气口法兰尺寸
Inlet And Outlet Flange Size



地脚螺栓预留孔布置图
Anchor Bolt Hole Arrangement Diagram



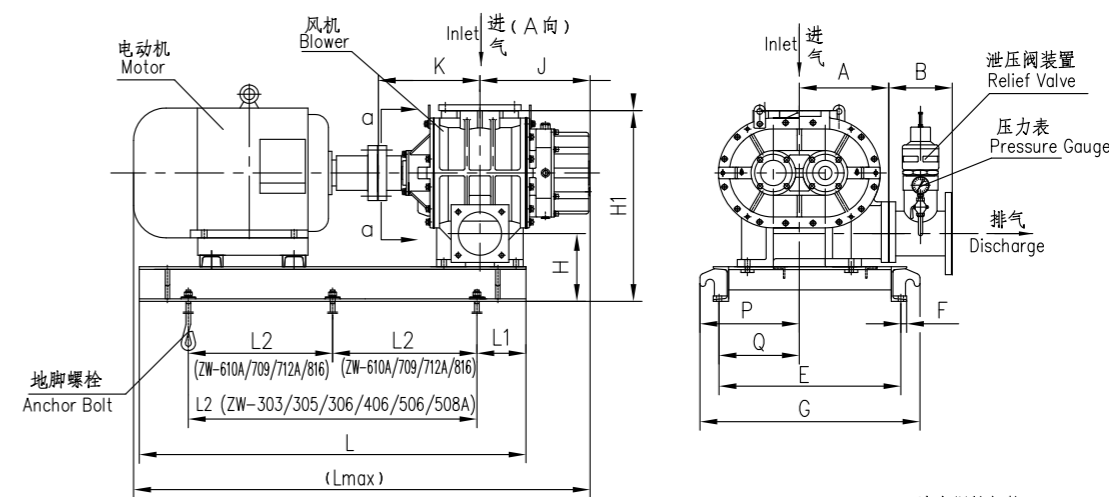
地脚螺栓规格
Anchor Bolt Type

风机型号 Blower Type	地脚螺栓规格 Anchor Bolt Type
ZW-303	M12×250
ZW-305	M12×250
ZW-306	M12×250
ZW-406	M12×250
ZW-506	M16×300
ZW-508A	M16×300
ZW-610A	M16×300
ZW-709	M16×300
ZW-712A	M16×300
ZW-816	M16×300

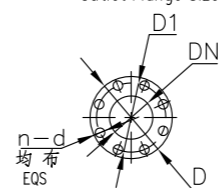
风机型号 Blower Type	A	B	E	F	Gmax	J	K	L	L1	L2	L3	L4	H	H1	H2	H3	n-d	DN	D1	D	S	M	N	机座重量 (kg) (不含电机) Unit Weight (kg) (Without Motor)
ZW-303	170	120	387	14	545	102	221	730	110	510	810	0	145	350	160	632	4-φ18	50	φ125	φ165	4	120	400	80
ZW-305	170	120	387	14	550	102	221	730	110	510	810	0	150	355	160	637	4-φ18	65	φ145	φ185	4	120	400	90
ZW-306	170	120	387	14	550	113	247	730	110	510	810	0	150	355	160	637	4-φ18	65	φ145	φ185	4	120	400	95
ZW-406	180	120	417	14	650	111	250	795	112.5	570	875	19	165	400	180	692	8-φ18	80	φ160	φ200	4	120	400	130
ZW-506	220	120	470	20	740	125	295	910	125	660	990	39.5	190	475	180	692	8-φ18	100	φ180	φ220	4	150	500	190
ZW-508A	220	160	470	20	815	125	295	910	125	660	990	39.5	190	475	220	877	8-φ18	125	φ210	φ250	4	150	500	200
ZW-610A	260	180	545	20	880	215	360	1020	110	400	1100	66	225	580	220	982	8-φ22	150	φ240	φ285	6	150	500	310
ZW-709	310	120	590	20	980	215	385	1255	127.5	500	1335	87.5	235	660	220	1042	8-φ22	150	φ240	φ285	6	150	500	440
ZW-712A	310	180	630	20	1000	196	402	1255	127.5	500	1335	87.5	235	660	250	1077	8-φ22	200	φ295	φ340	6	150	500	480
ZW-816	356	120	740	20	1091	300	455	1320	160	500	1400	77.5	262	774	250	1171	8-φ22	200	φ295	φ340	6	150	500	700

ZW 系列三叶罗茨鼓风机机组直联传动外形安装尺寸图 (正压应用)

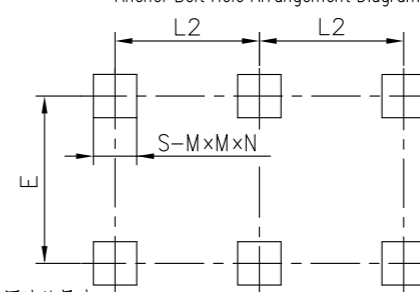
Direct Drive ZW Series Three-Lobe Roots Type Blower Packages Outline Drawing
(Pressure Application)



排气口法兰尺寸
Outlet Flange Size



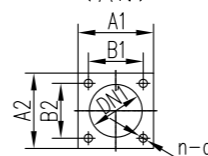
地脚螺栓预留孔布置图
Anchor Bolt Hole Arrangement Diagram



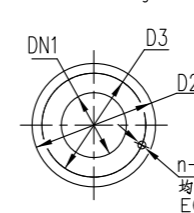
地脚螺栓规格
Anchor Bolt Type

风机型号 Blower Type	地脚螺栓规格 Anchor Bolt Type
ZW-303	M12×250
ZW-305	M12×250
ZW-306	M12×250
ZW-406	M12×250
ZW-506	M16×300
ZW-508A	M16×300
ZW-610A	M16×300
ZW-709	M16×300
ZW-712A	M16×300
ZW-816	M16×300

风机进口法兰尺寸
Blower Inlet Flange Size (A向)



风机进口法兰尺寸
Blower Inlet Flange Size



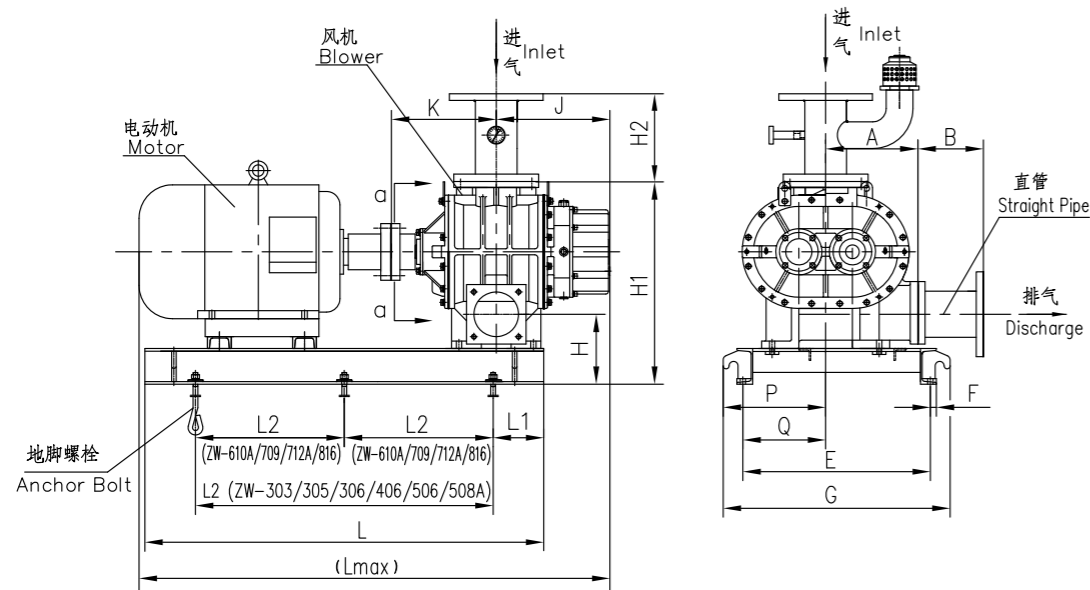
注：本图拆去了进口消声器

风机型号 Blower Type	A	B	E	F	G	J	K	L	L1	L2	Lmax	H	H1	P	Q	n-d	DN	D1	D	S	M	N	DN1	A1	A2	B1	B2	D2	D3	n-d1	机座重量 (kg) (不含电机) Unit Weight (kg) (Without Motor)
ZW-303	170	140	387	14	504	162	167	680	85	510	780	145	350	211.5	153.5	4-φ18	50	φ125	φ165	4	120	400	50	80	100	60	75	/	/	4-M10	85
ZW-305	170	150	387	14	504	177	182	680	85	510	780	150	355	211.5	153.5	4-φ18	65	φ145	φ185	4	120	400	65	110	110	80	80	/	/	4-M10	95
ZW-306	170	150	387	14	504	191	197	780	110	510	977	150	355	212	149.5	4-φ18	65	φ145	φ185	4	120	400	65	110	110	80	80	/	/	4-M10	100
ZW-406	180	180	417	14	534	217	228	845	102.5	640	1080	165	400	216	157.5	8-φ18	80	φ160	φ200	4	120	400	80	152	152	114	100	/	/	4-M12	145
ZW-506	220	180	470	20	590	235	250	910	85	740	1114	190	475	275	215	8-φ18	100	φ180	φ220	4	150	500	100	135	180	80	130	/	/	4-M16	200
ZW-508A	220	200	470	20	590	262	273	910	85	740	1195	190	475	275	215	8-φ18	125	φ210	φ250	4	150	500	100	180	180	130	130	/	/	4-M16	215
ZW-610A	260	220	545	20	685	332	331	1100	130	420	1465	225	580	300.5	230.5	8-φ22	150	φ240	φ285	6	150	500	125	/	/	/	/	250	210	8-M16	335
ZW-709	310	220	630	20	762	345	357	1260	130	500	1570	235	660	324	258	8-φ22	150	φ240	φ285	6	150	500	150	200	200	150	150	/	/	4-M20	440
ZW-712A	310	250	630	20	762	377	373	1340	170	500	1667	235	660	324	258	8-φ22	200	φ295	φ340	6	150	500	150	/	/	/	/	285	240	8-M20	470
ZW-816	356	250	775	20	915	432	444	1485	142.5	600	1902	262	774	427	357	8-φ22	200	φ295	φ340	6	150	500	200	/	/	/	/	340	295	8-M20	705

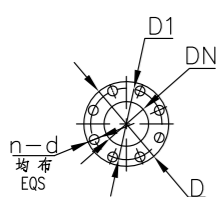
ZW 系列三叶罗茨鼓风机机组直联传动外形安装尺寸图

(真空应用)

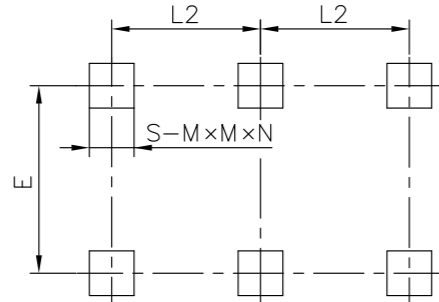
Direct Drive ZW Series Three-Lobe Roots Type Blower Packages Outline Drawing (Vacuum Application)



进、排气口法兰尺寸
Inlet And Outlet Flange Size



地脚螺栓预留孔布置图
Anchor Bolt Hole Arrangement Diagram



地脚螺栓规格
Anchor Bolt Type

风机型号 Blower Type	地脚螺栓规格 Anchor Bolt Type
ZW-303	M12×250
ZW-305	M12×250
ZW-306	M12×250
ZW-406	M12×250
ZW-506	M16×300
ZW-508A	M16×300
ZW-610A	M16×300
ZW-709	M16×300
ZW-712A	M16×300
ZW-816	M16×300

风机型号 Blower Type	A	B	E	F	G	J	K	L	L1	L2	Lmax	H	H1	H2	P	Q	n-d	DN	D1	D	S	M	N	机组重量(kg) (不含电机) Unit Weight (Kg) (Without Motor)
ZW-303	170	120	387	14	504	162	167	680	85	510	780	145	350	160	211.5	153.5	4-φ18	50	φ125	φ165	4	120	400	80
ZW-305	170	120	387	14	504	177	182	680	85	510	780	150	355	160	211.5	153.5	4-φ18	65	φ145	φ185	4	120	400	90
ZW-306	170	120	387	14	504	191	197	780	110	510	977	150	355	160	212	149.5	4-φ18	65	φ145	φ185	4	120	400	95
ZW-406	180	120	417	14	534	217	228	845	102.5	640	1080	165	400	180	216	157.5	8-φ18	80	φ160	φ200	4	120	400	130
ZW-506	220	120	470	20	590	235	250	910	85	740	1114	190	475	180	275	215	8-φ18	100	φ180	φ220	4	150	500	190
ZW-508A	220	160	470	20	590	262	273	910	85	740	1195	190	475	220	275	215	8-φ18	125	φ210	φ250	4	150	500	200
ZW-610A	260	180	545	20	685	332	331	1100	130	420	1465	225	580	220	300.5	230.5	8-φ22	150	φ240	φ285	6	150	500	310
ZW-709	310	120	630	20	762	345	357	1260	130	500	1570	235	660	220	324	258	8-φ22	150	φ240	φ285	6	150	500	415
ZW-712A	310	180	630	20	762	377	373	1340	170	500	1667	235	660	250	324	258	8-φ22	200	φ295	φ340	6	150	500	450
ZW-816	356	120	775	20	915	432	444	1485	142.5	600	1902	262	774	250	427	357	8-φ22	200	φ295	φ340	6	150	500	670

ZSH 系列罗茨风机 / 真空泵

ZSH series Roots type blower/vacuum pump

产品简介

Product Introduction

ZSH-V、ZLB 系列单级干式罗茨真空泵,是采用我公司专有的《带逆流装置的多叶型叶轮正(负)压罗茨风机结构》与《带有逆流装置的罗茨鼓风机、真空泵新结构》两项专利技术,借鉴吸收引进的日本 RR 系列罗茨鼓风机先进结构基础上,结合我公司近四十年的设计、制造经验,进行自主研发的新一代单级干式高真空罗茨真空泵。

ZSH-V ZLB series single stage dry Roots vacuum pump is using my company's proprietary "backflow device with multi-blade impeller positive (negative) pressure blower Structure" and "Roots blower with a countercurrent apparatus, vacuum pump new structure," two patented technologies, learn from and absorb the introduction of Japan's advanced RR series Roots blower based on the structure, combined with our nearly four decades of design and manufacturing experience, independent research and development of next-generation single-stage dry-type high vacuum Roots vacuum pump.

产品特点

Product Features

- 采用逆流装置等多项专利技术,结构设计先进合理。
- 叶轮采用特殊设计的复合型线,效率高。
- 关键零部件加工精度高,保证真空泵运转平稳。
- 真空度高,流量覆盖面广。流量范围: 2.9~194.5m³/min, 真空度: -49~-78.4kPa。
- The use of counter-current devices and many other patented technologies, advanced and reasonable structure design.
- Using a specially designed impeller clover composite cable, and high efficiency.
- The key components of high precision machining, to ensure smooth running vacuum pump.
- High vacuum, flow coverage. Flow Range: 2.9 ~ 194.5m³/min, vacuum degree: -49 ~ -78.4kPa.

产品用途

Product Use

广泛应用于电厂负压除灰, 水泥、冶炼、负压气力输送、V法铸造等行业。

Widely used in power plants vacuum ash, cement, smelting, vacuum pneumatic conveying, V France foundry industries.