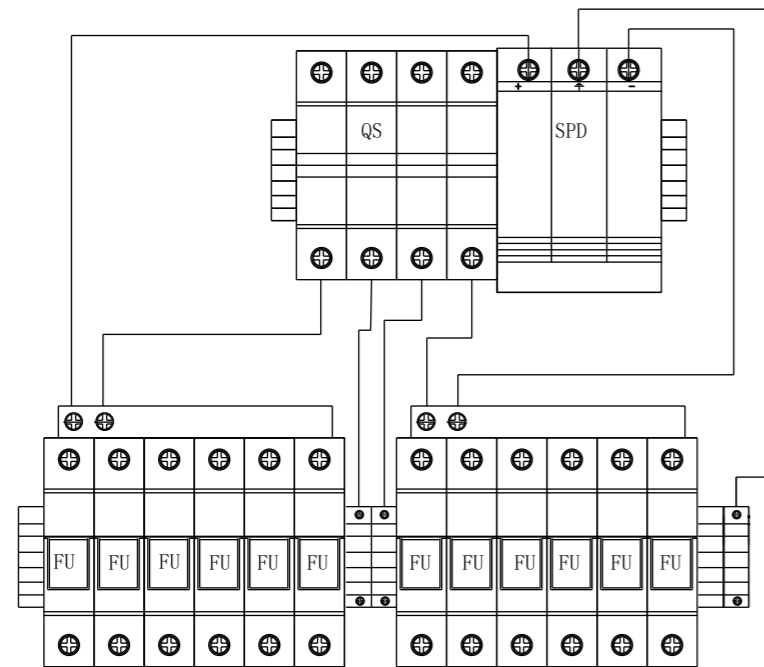
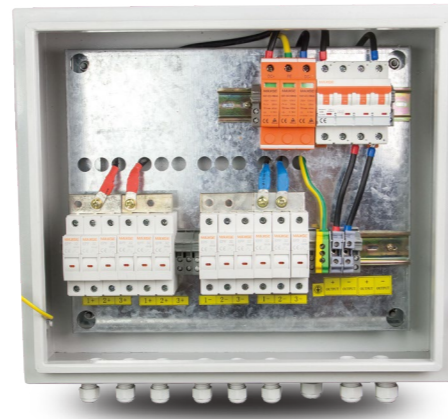


MG-PV6/1 DC COMBINER BOX

High reliability
 With DC FUSE
 With DC Surge Protection Device
 With DC circuit breaker or DC load isolation switch.
 Strong adaptability
 IP65 design, waterproof, anti dust and anti ultraviolet.
 Strict test for high and low temperature, used widely.
 The simple installation, the simplified system wiring, the convenient wiring.
 The box body is made of cold rolled steel and other metal materials.
 Flexible configuration
 Used for single crystal silicon solar modules, polycrystalline silicon solar modules, thin film solar modules. Current rating of the photovoltaic fuse, circuit breaker, load isolation switch is modified.



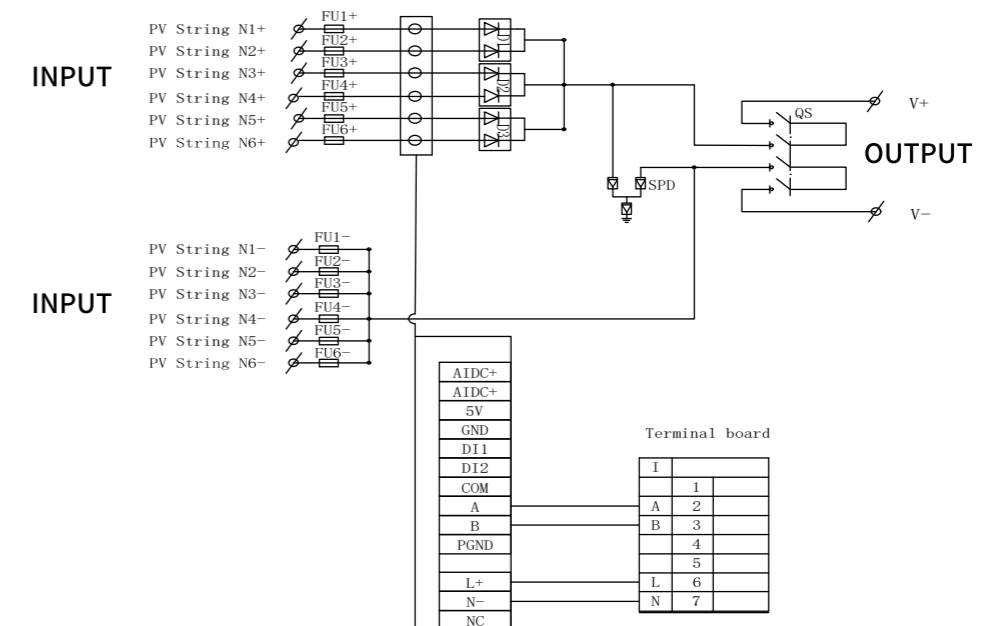
DESCRIPTION

MG-PV6/1 PV combiner box bus synthetic DC input of 6 PV components to 1 output each channel is with a fuse. Output side is equipped with lightning protection and circuit breaker. It greatly improves wiring of DC power distribution cabinet and inverter. Realize lightning protection, short circuit protection and grounding protection. PV combiner box divides into two types: intelligent box and non-intelligent box. Intelligent PV combiner box is equipped with monitoring unit, then detect input current of each string, detect inside temperature, detect lightning protection status, detect circuit breaker status and summarize output voltage and so on. Providing users with a safe, brief, beautiful and applicable photovoltaic system products. The product adopts outdoor wall mounted type, which adapts to the harsh environment. In addition to the core components, the other can be customized by user requirements.

TECHNICAL PARAMETERS

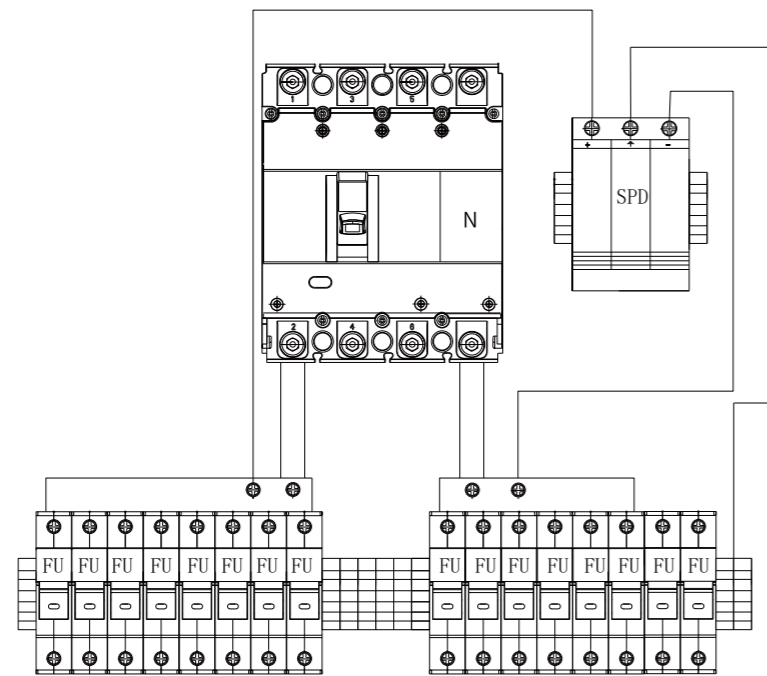
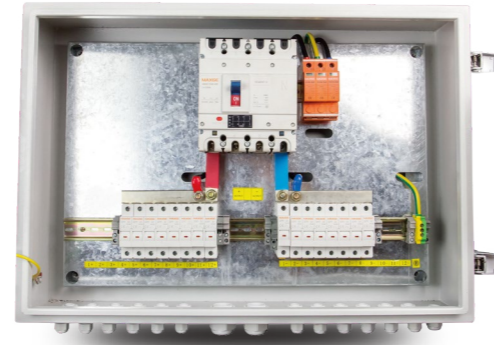
Name	MG-PV6/1
	Electric parameter
System maximum dc voltage	1000
Maximum input current for each string	15A
Maximum input strings	6
Maximum output switch current	125A
Number of Output strings	1
	Lightning protection
Category of test	II grade protection
Nominal discharge current	20KA
Maximum discharge current	40KA
Voltage protection level Up	3.8KV
Maximum continuous operating voltage Uc	1050V
Poles	3P
Structure characteristic	Plug-push module
	System
Protection grade	IP65
Output switch	DC isolation switch(standard)/DC circuit breaker(optional)
SMC4 Waterproof Connectors	Standard
PV dc fuse	Standard
PV surge protector	Standard
Monitoring module	Optional
Preventing diode	Optional
Box material	Metal
Installation method	Wall mounting type
Operating temperature	-25°C~+55°C
Elevation of temperature	2000M
Permissible relative humidity	0-95%, no condensation

SCHEMATIC DIAGRAM



MG-PV8/1 DC COMBINER BOX

High reliability
 With DC FUSE
 With DC Surge Protection Device
 With DC circuit breaker or DC load isolation switch.
 Strong adaptability
 IP65 design, waterproof, anti dust and anti ultraviolet.
 Strict test for high and low temperature, used widely.
 The simple installation, the simplified system wiring, the convenient wiring.
 The box body is made of cold rolled steel and other metal materials.
 Flexible configuration
 Used for single crystal silicon solar modules, polycrystalline silicon solar modules, thin film solar modules. Current rating of the photovoltaic fuse, circuit breaker, load isolation switch is modified.



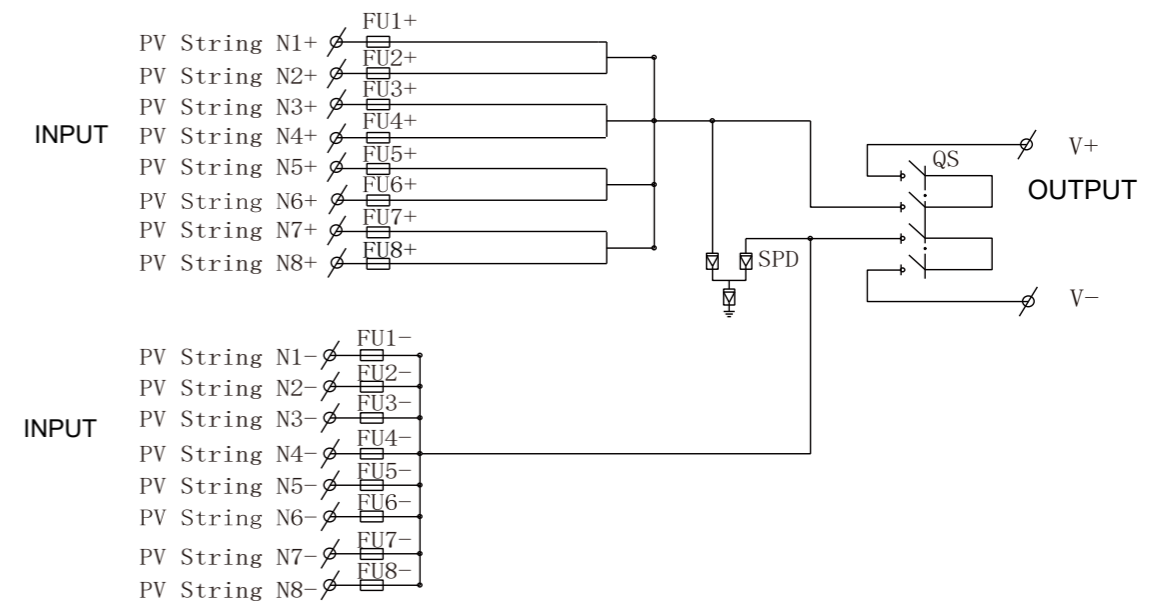
DESCRIPTION

MG-PV8/1 PV combiner box bus synthetic DC input of 8 PV components to 1 output each channel is with a fuse. Output side is equipped with lightning protection and circuit breaker. It greatly improves wiring of DC power distribution cabinet and inverter. Realize lightning protection, short circuit protection and grounding protection. PV combiner box divides into two types: intelligent box and non-intelligent box. Intelligent PV combiner box is equipped with monitoring unit, then detect input current of each string, detect inside temperature, detect lightning protection status, detect circuit breaker status and summarize output voltage and so on. Providing users with a safe, brief, beautiful and applicable photovoltaic system products. The product adopts outdoor wall mounted type, which adapts to the harsh environment. In addition to the core components, the other can be customized by user requirements.

TECHNICAL PARAMETERS

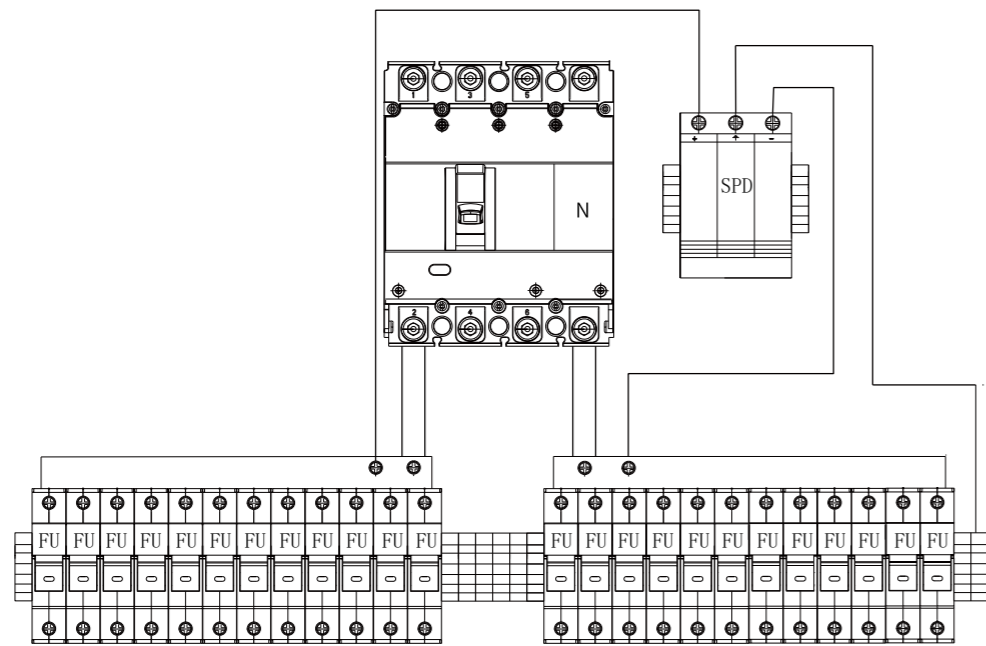
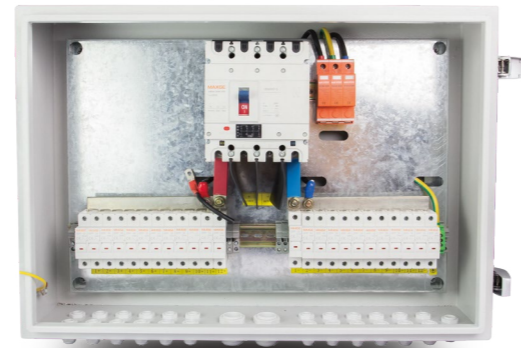
Name	MG-PV8/1
	Electric parameter
System maximum dc voltage	1000
Maximum input current for each string	15A
Maximum input strings	6
Maximum output switch current	125A
Number of Output strings	1
	Lightning protection
Category of test	II grade protection
Nominal discharge current	20KA
Maximum discharge current	40KA
Voltage protection level Up	3.8KV
Maximum continuous operating voltage U _c	1050V
Poles	3P
Structure characteristic	Plug-push module
	System
Protection grade	IP65
Output switch	DC isolation switch(standard)/DC circuit breaker(optional)
SMC4 Waterproof Connectors	Standard
PV dc fuse	Standard
PV surge protector	Standard
Monitoring module	Optional
Preventing diode	Optional
Box material	Metal
Installation method	Wall mounting type
Operating temperature	-25°C~+55°C
Elevation of temperature	2000M
Permissible relative humidity	0-95%, no condensation

SCHEMATIC DIAGRAM



MG-PV12/1 DC COMBINER BOX

- High reliability
- With DC FUSE
- With DC Surge Protection Device
- With DC circuit breaker or DC load isolation switch.
- Strong adaptability
- IP65 design, waterproof, anti dust and anti ultraviolet.
- Strict test for high and low temperature, used widely.
- The simple installation, the simplified system wiring, the convenient wiring.
- The box body is made of cold rolled steel and other metal materials.
- Flexible configuration
- Used for single crystal silicon solar modules, polycrystalline silicon solar modules, thin film solar modules. Current rating of the photovoltaic fuse, circuit breaker, load isolation switch is modified.



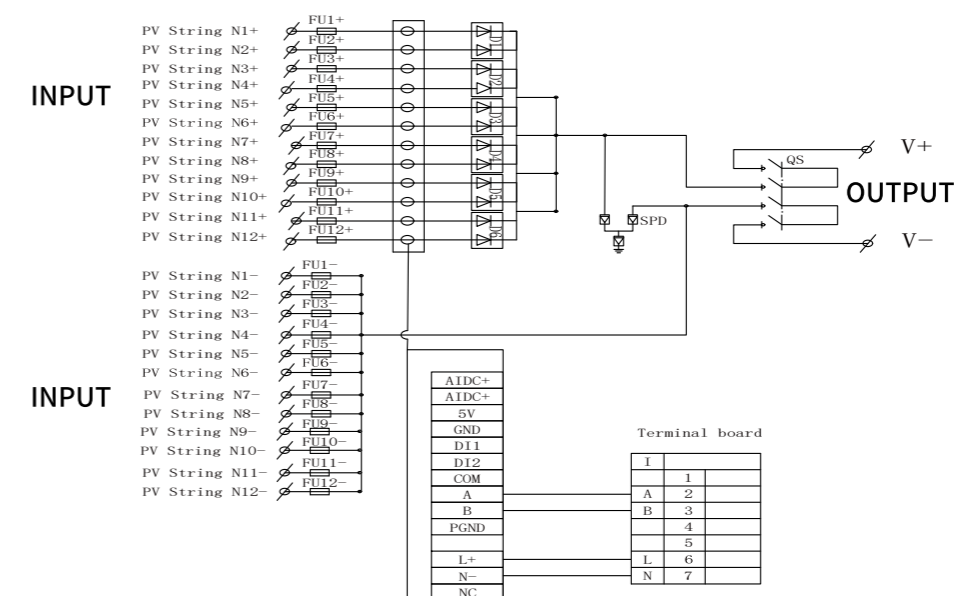
DESCRIPTION

MG-PV12/1 PV combiner box bus synthetic DC input of 12 PV components to 1 output each channel is with a fuse. Output side is equipped with lightning protection and circuit breaker. It greatly improves wiring of DC power distribution cabinet and inverter. Realize lightning protection, short circuit protection and grounding protection. PV combiner box divides into two types: intelligent box and non-intelligent box. Intelligent PV combiner box is equipped with monitoring unit, then detect input current of each string, detect inside temperature, detect lightning protection status, detect circuit breaker status and summarize output voltage and so on. Providing users with a safe, brief, beautiful and applicable photovoltaic system products. The product adopts outdoor wall mounted type, which adapts to the harsh environment. In addition to the core components, the other can be customized by user requirements.

TECHNICAL PARAMETERS

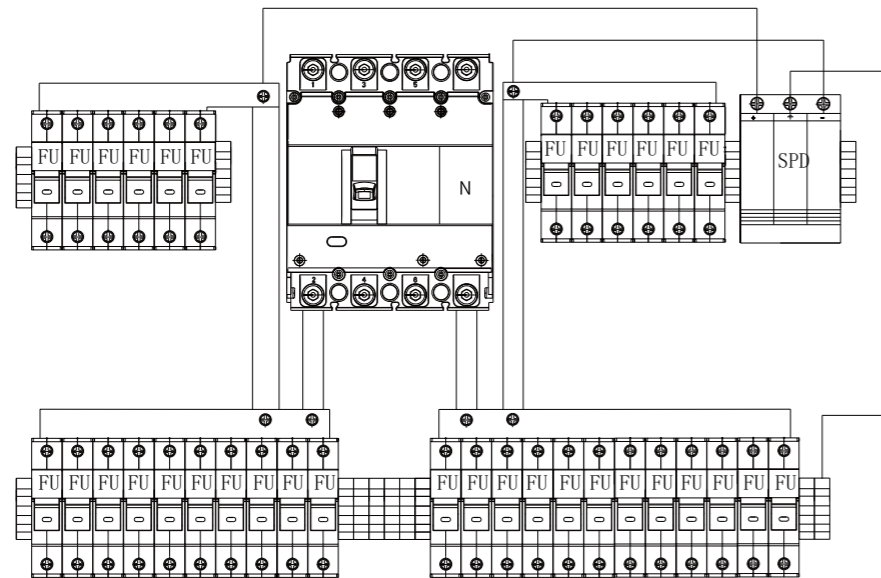
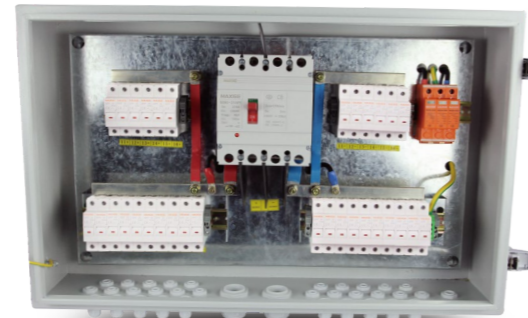
Name	MG-PV12/1
	Electric parameter
System maximum dc voltage	1000
Maximum input current for each string	15A
Maximum input strings	12
Maximum output switch current	200A
Number of Output strings	1
	Lightning protection
Category of test	II grade protection
Nominal discharge current	20KA
Maximum discharge current	40KA
Voltage protection level Up	3.8KV
Maximum continuous operating voltage Uc	1050V
Poles	3P
Structure characteristic	Plug-push module
	System
Protection grade	IP65
Output switch	DC isolation switch(standard)/DC circuit breaker(optional)
SMC4 Waterproof Connectors	Standard
PV dc fuse	Standard
PV surge protector	Standard
Monitoring module	Optional
Preventing diode	Optional
Box material	Metal
Installation method	Wall mounting type
Operating temperature	-25°C~+55°C
Elevation of temperature	2000M
Permissible relative humidity	0-95%, no condensation

SCHEMATIC DIAGRAM



MG-PV16/1 DC COMBINER BOX

High reliability
 With DC FUSE
 With DC Surge Protection Device
 With DC circuit breaker or DC load isolation switch.
 Strong adaptability
 IP65 design, waterproof, anti dust and anti ultraviolet.
 Strict test for high and low temperature, used widely.
 The simple installation, the simplified system wiring, the convenient wiring.
 The box body is made of cold rolled steel and other metal materials.
 Flexible configuration
 Used for single crystal silicon solar modules, polycrystalline silicon solar modules, thin film solar modules. Current rating of the photovoltaic fuse, circuit breaker, load isolation switch is modified.



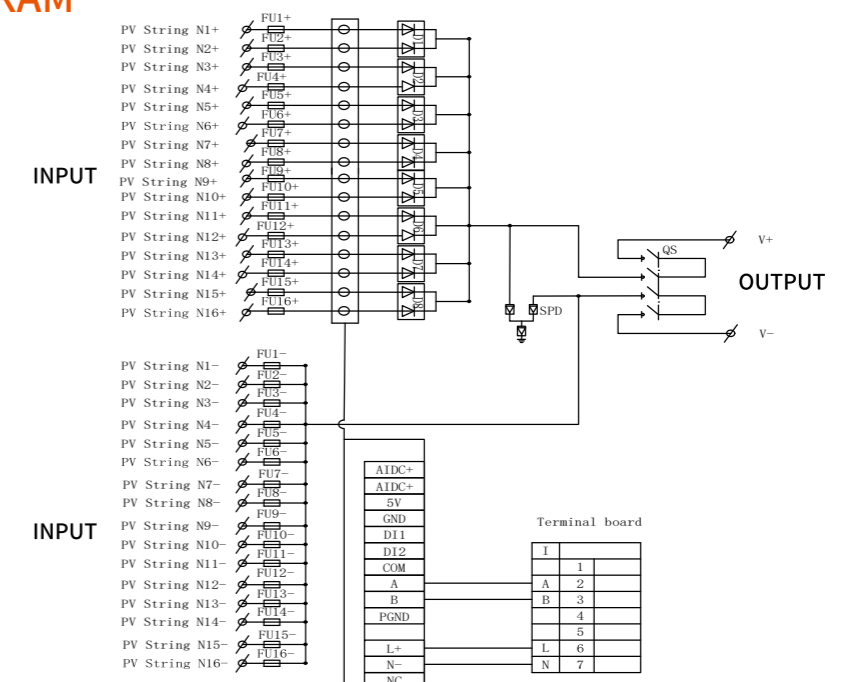
DESCRIPTION

MG-PV16/1 PV combiner box bus synthetic DC input of 16 PV components to 1 output each channel is with a fuse. Output side is equipped with lightning protection and circuit breaker. It greatly improves wiring of DC power distribution cabinet and inverter. Realize lightning protection, short circuit protection and grounding protection. PV combiner box divides into two types: intelligent box and non-intelligent box. Intelligent PV combiner box is equipped with monitoring unit, then detect input current of each string, detect inside temperature, detect lightning protection status, detect circuit breaker status and summarize output voltage and so on. Providing users with a safe, brief, beautiful and applicable photovoltaic system products. The product adopts outdoor wall mounted type, which adapts to the harsh environment. In addition to the core components, the other can be customized by user requirements.

TECHNICAL PARAMETERS

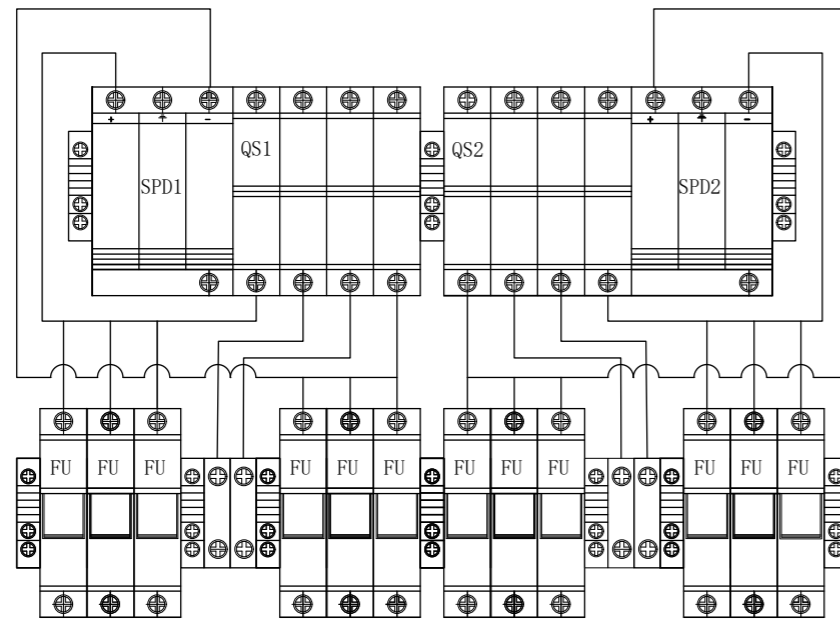
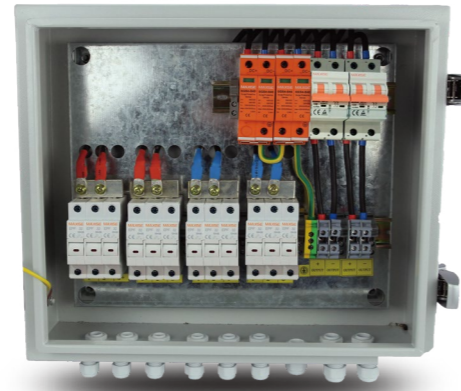
Name	MG-PV16/1
	Electric parameter
System maximum dc voltage	1000
Maximum input current for each string	15A
Maximum input strings	16
Maximum output switch current	200A
Number of Output strings	1
	Lightning protection
Category of test	II grade protection
Nominal discharge current	20KA
Maximum discharge current	40KA
Voltage protection level Up	3.8KV
Maximum continuous operating voltage Uc	1050V
Poles	3P
Structure characteristic	Plug-push module
	System
Protection grade	IP65
Output switch	DC isolation switch(standard)/DC circuit breaker(optional)
SMC4 Waterproof Connectors	Standard
PV dc fuse	Standard
PV surge protector	Standard
Monitoring module	Optional
Preventing diode	Optional
Box material	Metal
Installation method	Wall mounting type
Operating temperature	-25°C~+55°C
Elevation of temperature	2000M
Permissible relative humidity	0-95%, no condensation

SCHEMATIC DIAGRAM



MG-PV6/2 DC COMBINER BOX

High reliability
 With DC FUSE
 With DC Surge Protection Device
 With DC circuit breaker or DC load isolation switch.
 Strong adaptability
 IP65 design, waterproof, anti dust and anti ultraviolet.
 Strict test for high and low temperature, used widely.
 The simple installation, the simplified system wiring, the convenient wiring.
 The box body is made of cold rolled steel and other metal materials.
 Flexible configuration
 Used for single crystal silicon solar modules, polycrystalline silicon solar modules, thin film solar modules. Current rating of the photovoltaic fuse, circuit breaker, load isolation switch is modified.



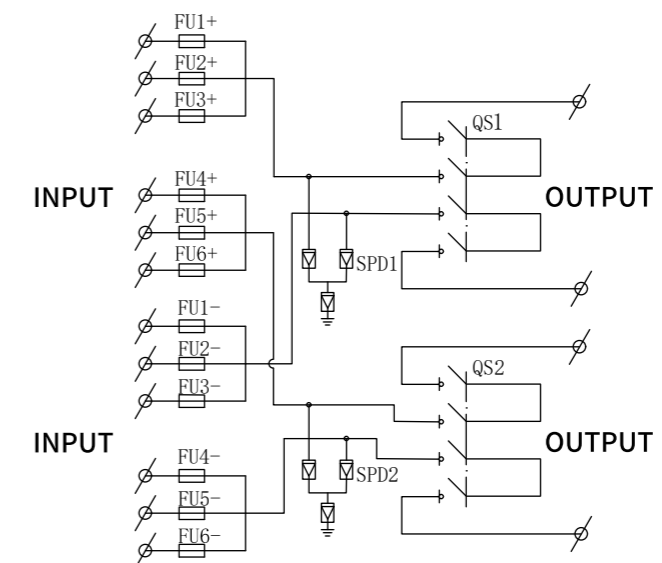
DESCRIPTION

MG-PV6/2 PV combiner box bus synthetic DC input of 6 PV components to 2 output each channel is with a fuse. Output side is equipped with lightning protection and circuit breaker. It greatly improves wiring of DC power distribution cabinet and inverter. Realize lightning protection, short circuit protection and grounding protection. PV combiner box divides into two types: intelligent box and non-intelligent box. Intelligent PV combiner box is equipped with monitoring unit, then detect input current of each string, detect inside temperature, detect lightning protection status, detect circuit breaker status and summarize output voltage and so on. Providing users with a safe, brief, beautiful and applicable photovoltaic system products. The product adopts outdoor wall mounted type, which adapts to the harsh environment. In addition to the core components, the other can be customized by user requirements.

TECHNICAL PARAMETERS

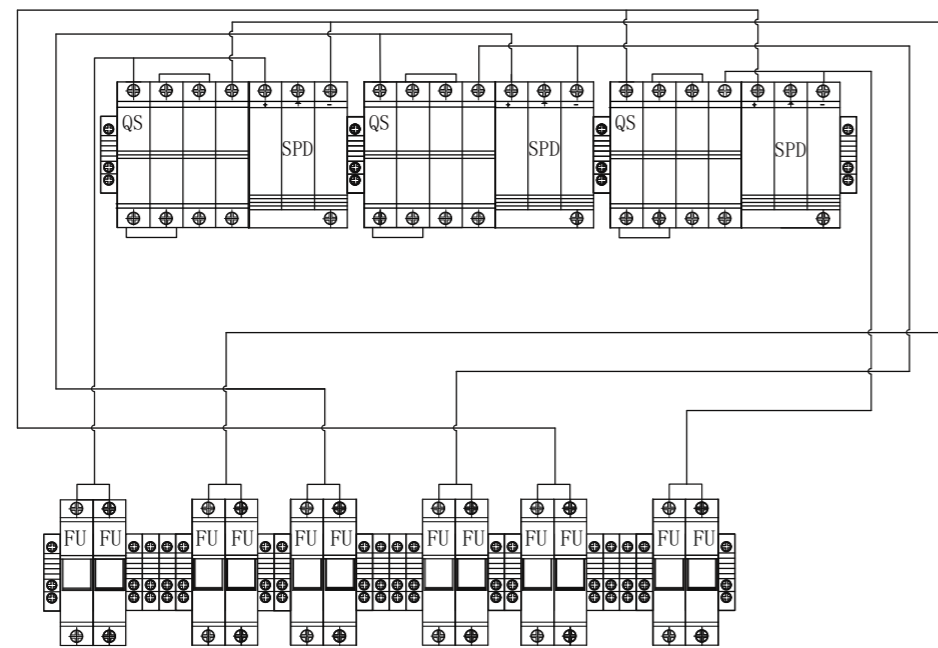
Name	MG-PV6/2	
	Electric parameter	
System maximum dc voltage	500	1000
Maximum input current for each string	15A	
Maximum input strings	6	
Maximum output switch current	32A/40A	
Number of Output strings	2	
	Lightning protection	
Category of test	II grade protection	
Nominal discharge current	20KA	
Maximum discharge current	40KA	
Voltage protection level Up	3.8KV	
Maximum continuous operating voltage Uc	1050V	
Poles	3P	
Structure characteristic	Plug-push module	
	System	
Protection grade	IP65	
Output switch	DC isolation switch(standard)/DC circuit breaker(optional)	
SMC4 Waterproof Connectors	Standard	
PV dc fuse	Standard	
PV surge protector	Standard	
Monitoring module	Optional	
Preventing diode	Optional	
Box material	Metal	
Installation method	Wall mounting type	
Operating temperature	-25°C~+55°C	
Elevation of temperature	2000M	
Permissible relative humidity	0-95%, no condensation	

SCHEMATIC DIAGRAM



MG-PV6/3 DC COMBINER BOX

High reliability
 With DC FUSE
 With DC Surge Protection Device
 With DC circuit breaker or DC load isolation switch.
 Strong adaptability
 IP65 design, waterproof, anti dust and anti ultraviolet.
 Strict test for high and low temperature, used widely.
 The simple installation, the simplified system wiring, the convenient wiring.
 The box body is made of cold rolled steel and other metal materials.
 Flexible configuration
 Used for single crystal silicon solar modules, polycrystalline silicon solar modules, thin film solar modules. Current rating of the photovoltaic fuse, circuit breaker, load isolation switch is modified.



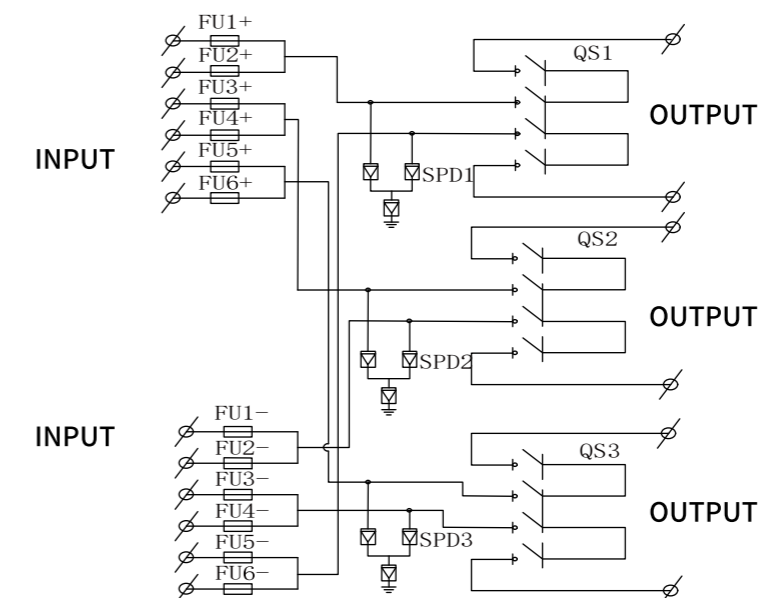
DESCRIPTION

MG-PV6/3 PV combiner box bus synthetic DC input of 6 PV components to 3 output each channel is with a fuse. Output side is equipped with lightning protection and circuit breaker. It greatly improves wiring of DC power distribution cabinet and inverter. Realize lightning protection, short circuit protection and grounding protection. PV combiner box divides into two types: intelligent box and non-intelligent box. Intelligent PV combiner box is equipped with monitoring unit, then detect input current of each string, detect inside temperature, detect lightning protection status, detect circuit breaker status and summarize output voltage and so on. Providing users with a safe, brief, beautiful and applicable photovoltaic system products. The product adopts outdoor wall mounted type, which adapts to the harsh environment. In addition to the core components, the other can be customized by user requirements.

TECHNICAL PARAMETERS

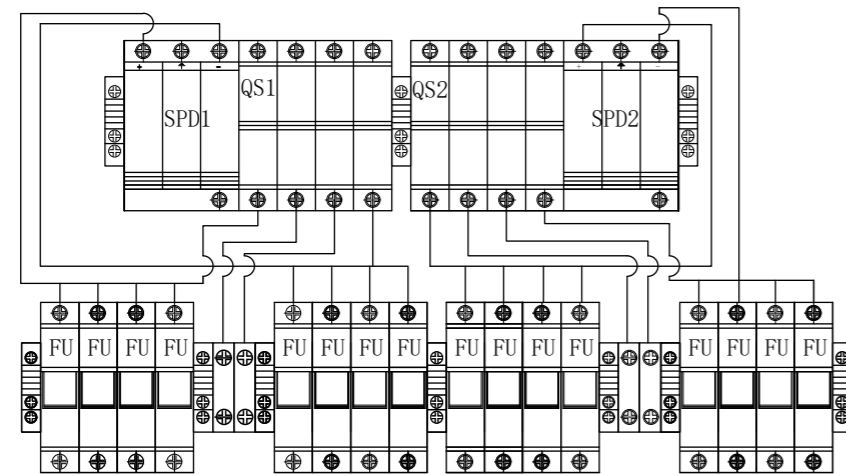
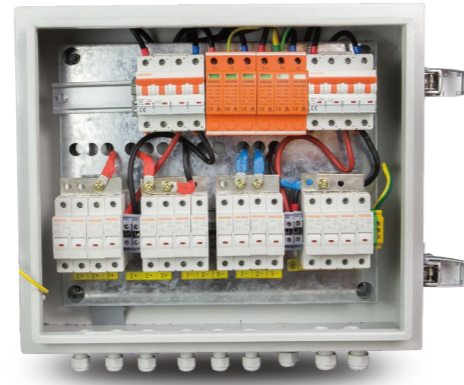
Name	MG-PV6/3	
	Electric parameter	
System maximum dc voltage	500	1000
Maximum input current for each string	15A	
Maximum input strings	6	
Maximum output switch current	20A/32A	
	Lightning protection	
Category of test	II grade protection	
Nominal discharge current	20KA	
Maximum discharge current	40KA	
Voltage protection level Up	3.8KV	
Maximum continuous operating voltage Uc	1050V	
Poles	3P	
Structure characteristic	Plug-push module	
	System	
Protection grade	IP65	
Output switch	DC isolation switch(standard)/DC circuit breaker(optional)	
SMC4 Waterproof Connectors	Standard	
PV dc fuse	Standard	
PV surge protector	Standard	
Monitoring module	Optional	
Preventing diode	Optional	
Box material	Metal	
Installation method	Wall mounting type	
Operating temperature	-25°C~+55°C	
Elevation of temperature	2000M	
Permissible relative humidity	0-95%, no condensation	

SCHEMATIC DIAGRAM



MG-PV8/2 DC COMBINER BOX

High reliability
 With DC FUSE
 With DC Surge Protection Device
 With DC circuit breaker or DC load isolation switch.
 Strong adaptability
 IP65 design, waterproof, anti dust and anti ultraviolet.
 Strict test for high and low temperature, used widely.
 The simple installation, the simplified system wiring, the convenient wiring.
 The box body is made of cold rolled steel and other metal materials.
 Flexible configuration
 Used for single crystal silicon solar modules, polycrystalline silicon solar modules, thin film solar modules. Current rating of the photovoltaic fuse, circuit breaker, load isolation switch is modified.



DESCRIPTION

MG-PV8/2 PV combiner box bus synthetic DC input of 8 PV components to 2 output each channel is with a fuse. Output side is equipped with lightning protection and circuit breaker. It greatly improves wiring of DC power distribution cabinet and inverter. Realize lightning protection, short circuit protection and grounding protection. PV combiner box divides into two types: intelligent box and non-intelligent box. Intelligent PV combiner box is equipped with monitoring unit, then detect input current of each string, detect inside temperature, detect lightning protection status, detect circuit breaker status and summarize output voltage and so on. Providing users with a safe, brief, beautiful and applicable photovoltaic system products. The product adopts outdoor wall mounted type, which adapts to the harsh environment. In addition to the core components, the other can be customized by user requirements.

TECHNICAL PARAMETERS

Name	MG-PV8/2
	Electric parameter
System maximum dc voltage	1000
Maximum input current for each string	15A
Maximum input strings	8
Maximum output switch current	20A/32A
Number of Output strings	2
	Lightning protection
Category of test	II grade protection
Nominal discharge current	20KA
Maximum discharge current	40KA
Voltage protection level Up	3.8KV
Maximum continuous operating voltage U _c	1050V
Poles	3P
Structure characteristic	Plug-push module
	System
Protection grade	IP65
Output switch	DC isolation switch(standard)/DC circuit breaker(optional)
SMC4 Waterproof Connectors	Standard
PV dc fuse	Standard
PV surge protector	Standard
Monitoring module	Optional
Preventing diode	Optional
Box material	Metal
Installation method	Wall mounting type
Operating temperature	-25°C~+55°C
Elevation of temperature	2000M
Permissible relative humidity	0-95%, no condensation

SCHEMATIC DIAGRAM

