

## SGC1 Series Modular Contactor

### Technical data

<b>Standard</b>	EN/IEC 60947-4-1,EN/IEC 61095
<b>Maximum power</b>	AC1 220/230VAC: 20A 4.5KW(EPC1-20) 25A 16KW(EPC1-25) AC-1/AC-7a 380/400VAC: 63A 40KW(EPC1-63) AC-3/AC-7b 380/400VAC: 25A 15KW(EPC1-63) 4KW(EPC1-25)
<b>Main contacts terminal capacity</b>	1.5-6mm <sup>2</sup> ( EPC1-10/16/20/25A) 6-35mm <sup>2</sup> (EPC1-40/63A)
<b>Coil contact A1, A2 terminal capacity</b>	0.75-2.5mm <sup>2</sup>
<b>Electric endurance</b>	≥100,000
<b>Mechanical endurance</b>	≥5000,000
<b>Protection degree</b>	IP20
<b>Terminal tightening torque(N.m)</b>	0.8-3.5
<b>Ambient temperature (°C)</b>	-5~+60, max. 95%humidity
<b>Storage temperature(°C)</b>	-40~+75
<b>Connection capacity(mm<sup>2</sup>)</b>	1-25



# CE CB



SGC1-2P(10A-25A)



SGC1-2P(32A-63A)



SGC1-4P(10A-25A)



SGC1-4P(32A-63A)

## SGC1 Modular Contactor



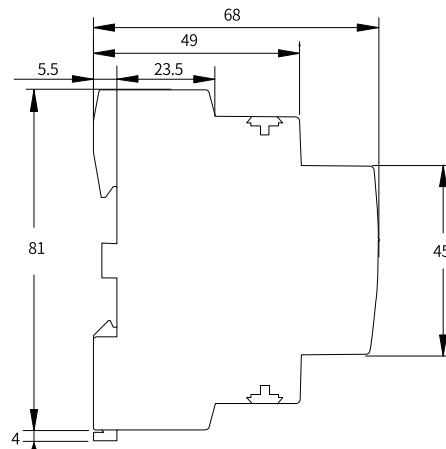
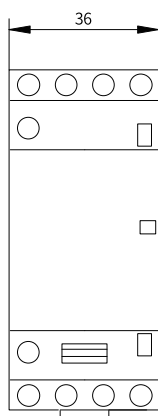
**SGC1-2P(10A-25A)**



**SGC1-4P(10A-25A)**

Code No.	Rated current In(A)		Contact position	Control voltage (Vac)	Rated control power in(KW)	
	Ac-7a/Ac-1	Ac-7b/Ac-1			Ac-7a/230V	Ac-7b/230V
SGC1-10-11C	10	4	1NO+1NC	240	2	0.75
SGC1-10-20C	10	4	2NO	240	2	0.75
SGC1-10-02C	10	4	2NC	240	2	0.75
SGC1-16-11C	16	5.5	1NO+1NC	240	3.2	1.0
SGC1-16-20C	16	5.5	2NO	240	3.2	1.0
SGC1-16-02C	16	5.5	2NC	240	3.2	1.0
SGC1-20-11C	20	7	1NO+1NC	240	4	1.2
SGC1-20-20C	20	7	2NO	240	4	1.2
SGC1-20-02C	20	7	2NC	240	4	1.2
SGC1-25-11C	25	8.5	1NO+1NC	240	5	1.4
SGC1-25-20C	25	8.5	2NO	240	5	1.4
SGC1-25-02C	25	8.5	2NC	240	5	1.4
SGC1-10-22	10	4	2NO+2NC	240	6.2	2.2
SGC1-10-31	10	4	3NO+1NC	240	6.2	2.2
SGC1-10-40	10	4	4NO	240	6.2	2.2
SGC1-10-04	10	4	4NC	240	6.2	2.2
SGC1-16-22	16	5.5	2NO+2NC	240	10	3
SGC1-16-31	16	5.5	3NO+1NC	240	10	3
SGC1-16-40	16	5.5	4NO	240	10	3
SGC1-16-04	16	5.5	4NC	240	10	3
SGC1-20-22	20	7	2NO+2NC	240	13	3.5
SGC1-20-31	20	7	3NO+1NC	240	13	3.5
SGC1-20-40	20	7	4NO	240	13	3.5
SGC1-20-04	20	7	4NC	240	13	3.5
SGC1-25-22	25	8.5	2NO+2NC	240	15	4
SGC1-25-31	25	8.5	3NO+1NC	240	15	4
SGC1-25-40	25	8.5	4NO	240	15	4
SGC1-25-04	25	8.5	4NC	240	15	4

## Overall and mounting dimensions



**SGC1-10A-25A**

## SGC1 Modular Contactor



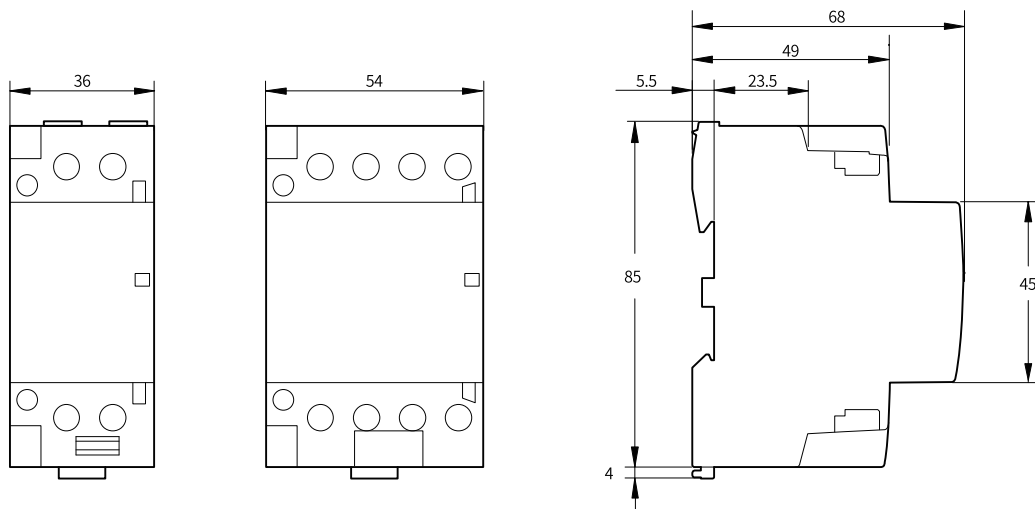
**SGC1-2P(32A-63A)**



**SGC1-4P(32A-63A)**

Code No.	Rated current In(A)		Contact position	Control voltage (Vac)	Rated control power in(KW)	
	Ac-7a/Ac-1	Ac-7b/Ac-1			Ac-7a/400V	Ac-7b/400V
SGC1-32-11	32	12	1NO+1NC	240	6.5	2
SGC1-32-20	32	12	2NO	240	6.5	2
SGC1-32-02	32	12	2NC	240	6.5	2
SGC1-40-11	40	15	1NO+1NC	240	8.5	2.5
SGC1-40-20	40	15	2NO	240	8.5	2.5
SGC1-40-02	40	15	2NC	240	8.5	2.5
SGC1-63-11	63	25	1NO+1NC	240	13	4
SGC1-63-20	63	25	2NO	240	13	4
SGC1-63-02	63	25	2NC	240	13	4
SGC1-32-22	32	12	2NO+2NC	240	21	6.5
SGC1-32-31	32	12	3NO+1NC	240	21	6.5
SGC1-32-40	32	12	4NO	240	21	6.5
SGC1-32-04	32	12	4NC	240	21	6.5
SGC1-40-22	40	15	2NO+2NC	240	26	7.5
SGC1-40-31	40	15	3NO+1NC	240	26	7.5
SGC1-40-40	40	15	4NO	240	26	7.5
SGC1-40-04	40	15	4NC	240	26	7.5
SGC1-63-22	63	25	2NO+2NC	240	40	13
SGC1-63-31	63	25	3NO+1NC	240	40	13
SGC1-63-40	63	25	4NO	240	40	13
SGC1-63-04	63	25	4NC	240	40	13

## Overall and mounting dimensions



**SGC1-32A-63A**