

## SGE1-D Series Magnetic Starter

### Technical data

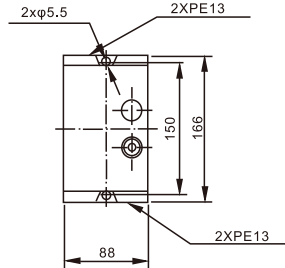
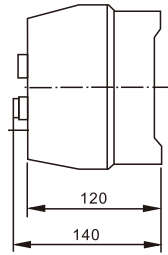
Standard	IEC60947-4-1, IEC60439-1
Electric ratings	09, 12, 18, 25, 32, 40, 50, 65, 80, 95
Approvals	CE
Rated operational voltage U <sub>e</sub> (V)	690
Rated insulation voltage U <sub>i</sub> (V)	690
Rated impulse withstand voltage U <sub>imp</sub> (kV)	8
Rated frequency(Hz)	50/60
Control buttons	Green Start button
	Red Stop/Reset button
Enclosure	SGE1-D09/12/18 Frame Double insulated, IP 65
	SGE1-D25/32 Frame Double insulated, IP 65
	SGE1-D40/50/65/80/95 Frame Metal, IP 65
Electrical life (X10 <sup>5</sup> times)	5
Mechanical life(X10 <sup>5</sup> times)	50
Matched AC Contactor type	SGC1-D series
Matched Thermal relay type	SGR2-D series
Ambient air temperature (°C)	-5 to +40, max. 95% humidity
Storage temperature (°C)	-40~+75
Maximum operating altitude (meters)	≤2000



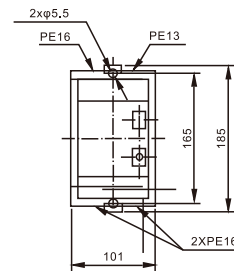
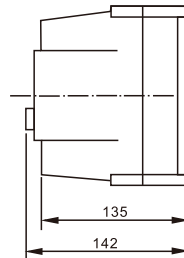
## SGE1-D Magnetic Starter



Type	Matched items		Rated power AC-3(KW)				
	Thermal relay	AC contactor	220/230V	380/400V	415V	440V	660/690V
SGE1-D09	SGR2-D13	SGC1-D09	2.2	4	4	4	5.5
SGE1-D12	SGR2-D13	SGC1-D12	3	5.5	5.5	5.5	7.5
SGE1-D18	SGR2-D13	SGC1-D18	4	7.5	9	9	10



Type	Matched items		Rated power AC-3(KW)				
	Thermal relay	AC contactor	220/230V	380/400V	415V	440V	660/690V
SGE1-D25	SGR2-D13	SGC1-D25	5.5	11	11	11	15
SGE1-D32	SGR2-D23	SGC1-D32	7.5	15	15	15	18.5



Type	Matched items		Rated power AC-3(KW)				
	Thermal relay	AC contactor	220/230V	380/400V	415V	440V	660/690V
SGE1-D40	SGR2-D33	SGC1-D40	11	18.5	22	22	30
SGE1-D50	SGR2-D33	SGC1-D50	15	22	25	30	33
SGE1-D65	SGR2-D33	SGC1-D65	18.5	30	37	37	37
SGE1-D80	SGR2-D33	SGC1-D80	22	37	45	45	45
SGE1-D95	SGR2-D33	SGC1-D95	25	45	45	45	45

