



PRODUCT CATALOGUE



Page 1	About Yeedah.
Page 2	Single layer silicone duct hose.
Page 3	
Page 4	Single layer silicone duct hose with cuffs.
Page 5	Double layer silicone duct hose 4m length.
Page 6	
Page 7	Double layer silicone duct hose with cuffs.
Page 8	
Page 9	Double layer neoprene duct hose 4m length.
Page 10	Double layer neoprene duct hose with cuffs
Page 11	
Page 12	Single layer neoprene duct hose 4m length.
Page 13	Single layer neoprene duct hose with cuffs
Page 14	PVC dental hose
Page 15	
Page 16	Flexible silicone duct connector
Page 17	
Page 18	Flexible PVC duct connector
Page 19	
Page 20	Flexible neoprene duct connector
Page 21	Speical size duct connector - round PVC duct connector
Page 22	Speical size duct connector - silicone aramid duct connector
Page 23	Speical size duct connector - silicone duct connector
Page 24	Speical size duct connector - square PVC duct connector
Page 25	PVC fabrics
Page 26	
Page 27	Silicone fiberglass fabric
Page 28	Silicone aramid fiber
Page 29	Neoprene fiberglass fabric

ABOUT YEEDAH

1. HISTORY OF YEEDAH

Yeedah Composite Material Corp. Ltd (was HYD) was established in 2005, in Southern China. We are engaged in manufacturing industry of HVAC. With our expertise in producing high temperature and fireproof products, our main categories are:

- Flexible duct hoses
- Coating fabrics
- Flexible duct connector
- Metal parts and accessories

Above mentioned products are widely used in machinery components, ventilation system, vehicle construction, building construction, and security facilities, safety protection, etc.



2. OUR EXPERIENCE

Our creative and professional team have designed most of our manufacturing equipment and developed our own production techniques. Based on our plenty of experiences in this industry, we provide professional proposals and solutions with our best quality products according to customers' different demand.

We keep reasonable quantity for stock to be sure of fast delivery. That is for standard items. Our experiences of the sales team enable us to offer feedback to our customers within 4 working hours from Monday to Friday. We always think from customers' viewpoint so that we are capable to offer proper cost-saving solutions, effective and efficient communication, prompt delivery, and satisfying services.

3. YEEDAH TEAM

We are a young company with efficiency and ambition. In the past years, we have been making every effort to grow together with all the customers, suppliers and employees; we will continue to devote to HVAC products and develop advanced techniques to enable us to be a global leading company in this industry.





SINGLE LAYER SILICONE DUCT HOSE - 4M LENGTH

DESCRIPTION

Single layer Silicone Duct Hose is made of one layer silicone coated glass fiber fabric. It is a kind of High temperature duct, flame retardant, chemical resistance, stand for very high temperature. It is also used in different industry.



CONSTRUCTION & MATERIAL

- Wall: 1 layer silicone fabric, spired tape.
- Reinforcement: visible spring steel wire under the fabric. Glass cord on the outside surface.

Applications

- For granulate/ plastic dryer, hot air dryer machine in plastic industry.
- For blowing machine, deliver hot or cool air.
- As component for different machines which produce hot or cool air.
- Widely used for vehicle engines like auto, air-craft, trucks, even military tank.

Properties

- highly light and flexible
- very good heat resistance
- It is leak-proof; kink-proof
- It has smooth interior

Temperature Range

- -70 °C approx. to +270 °C approx.
- short time to +300 °C approx.

Installation requirement

- Avoid abrasion outside; Keep some space between the hoses and walls, ground, or machines.
- Don't apply too strong bending stress and follow the corresponding bending radius.
- Keep away from strong chemical corrosion.
- Don't apply for higher working temperature over above properties.

Available Sizes:

- 13mm ~ 306mm
- Standard 4m/pc

TECHNICAL DATA

ITEM NO.	ID (mm)	OD (mm)	LENGTH (m)	OVER PRESSURE (bar)	VACUUM (bar)	BENDING RADIUS (mm)	WEIGHT (kg/4m)
SH1-0013-R/B	13	16	4	1.800	0.580	10	0.35
SH1-0016-R/B	16	19	4	1.800	0.580	12	0.44
SH1-0019-R/B	19	22	4	1.800	0.580	13	0.50
SH1-0022-R/B	22	25	4	1.800	0.580	14	0.53
SH1-0025-R/B	25	28	4	1.500	0.580	18	0.62
SH1-0032-R/B	32	35	4	1.500	0.580	20	0.76
SH1-0038-R/B	38	41	4	1.500	0.580	24	0.86
SH1-0040-R/B	40	43	4	1.500	0.570	26	0.80
SH1-0042-R/B	42	45	4	1.500	0.570	26	0.85
SH1-0044-R/B	44	47	4	1.500	0.560	27	0.95
SH1-0045-R/B	45	48	4	1.500	0.500	27	1.00
SH1-0050-R/B	50	53	4	1.500	0.500	31	1.05
SH1-0051-R/B	51	54	4	1.500	0.500	31	1.10
SH1-0057-R/B	57	60	4	1.300	0.500	34	1.26
SH1-0060-R/B	60	63.5	4	1.300	0.500	34	1.32
SH1-0063-R/B	63	66.5	4	1.300	0.500	37	1.40
SH1-0070-R/B	70	73.5	4	1.200	0.500	40	1.50
SH1-0076-R/B	76	79.5	4	1.100	0.390	43	1.80
SH1-0080-R/B	80	83.5	4	1.100	0.390	45	1.90
SH1-0083-R/B	83	86.5	4	1.100	0.390	47	2.00
SH1-0089-R/B	89	92.5	4	1.100	0.380	50	2.20
SH1-0102-R/B	102	106	4	1.100	0.380	56	2.50
SH1-0108-R/B	108	112	4	1.000	0.300	60	2.80
SH1-0110-R/B	110	114	4	1.000	0.300	60	3.00
SH1-0115-R/B	115	119	4	1.000	0.300	63	3.20
SH1-0127-R/B	127	131	4	0.900	0.290	70	3.50
SH1-0141-R/B	141	145.5	4	0.900	0.210	76	3.80
SH1-0150-R/B	150	154.5	4	0.800	0.180	82	4.00
SH1-0152-R/B	152	156.5	4	0.800	0.180	82	4.30
SH1-0159-R/B	159	163.5	4	0.700	0.160	86	4.46
SH1-0164-R/B	164	168.5	4	0.700	0.160	89	4.70
SH1-0169-R/B	169	174	4	0.700	0.160	89	5.00
SH1-0180-R/B	180	185	4	0.600	0.140	95	5.20
SH1-0203-R/B	203	208	4	0.600	0.140	108	5.92
SH1-0254-R/B	254	259	4	0.400	0.100	133	6.50
SH1-0306-R/B	306	311	4	0.100	0.070	159	8.00



SINGLE LAYER SILICONE DUCT HOSE - CUSTOMISED LENGTH WITH CUFFS

DESCRIPTION

Single layer Silicone Duct Hose with cuffs on one or two ends has better performance regarding air tightness. The soft sleeve has good elasticity, since no steel wire inside, it could be fixed well on the applied equipment.



CONSTRUCTION & MATERIAL

- Wall: 1 layer silicone fabric, spired tape.
- Reinforcement: visible spring steel wire under the fabric. Glass cord on the outside surface.
- **Soft cuffs on the one or two ends**
- **With or without glass cord on the surface**

Applications

- For granulate/ plastic dryer, hot air dryer machine in plastic industry.
- For blowing machine, deliver hot or cool air.
- As component for different machines which produce hot or cool air.
- Widely used for vehicle engines like auto, air-craft, trucks, even military tank.

Properties

- highly light and flexible
- very good heat resistance
- It is leak-proof; kink-proof
- It has smooth interior

Temperature Range

- -70 °C approx. to +270 °C approx.
- short time to +300 °C approx.

Installation requirement

- Avoid abrasion outside; Keep some space between the hoses and walls, ground, or machines.
- Don't apply too strong bending stress and follow the corresponding bending radius.
- Keep away from strong chemical corrosion.
- Don't apply for higher working temperature over above properties.

Available Sizes:

- 13mm ~ 306mm
- Customised length



DOUBLE LAYER SILICONE DUCT HOSE - 4M LENGTH

DESCRIPTION

Double layer Silicone Duct Hose is made of two layers silicone coated glass fiber fabric. It is a kind of High temperature duct, flame retardant, chemical resistance, stand for very high temperature. It is also used in different industry.



CONSTRUCTION & MATERIAL

- Wall: 2 layer silicone fabric, spired tape.
- Reinforcement: spring steel wire is hidden between the two layers fabric. Glass cord on the outside surface.

Applications

- For granulate/ plastic dryer, hot air dryer machine in plastic industry.
- For blowing machine, deliver hot or cool air.
- As component for different machines which produce hot or cool air.
- Widely used for vehicle engines like auto, air-craft, trucks, even military tank.

Properties

- highly light and flexible
- very good heat resistance
- It is leak-proof; kink-proof
- It has smooth interior
- The long life time of this duct is around 5~10 years in normal working condition

Temperature Range

- -70 °C approx. to +270 °C approx.
- short time to +300 °C approx.

Installation requirement

- Avoid abrasion outside; Keep some space between the hoses and walls, ground, or machines.
- Don't apply too strong bending stress and follow the corresponding bending radius.
- Keep away from strong chemical corrosion.
- Don't apply for higher working temperature over above properties.

Available Sizes:

- 13mm ~ 306mm
- Standard 4m/pc

TECHNICAL DATA

ITEM NO.	ID (mm)	OD (mm)	LENGTH (m)	OVER PRESSURE (bar)	VACUUM (bar)	BENDING RADIUS (mm)	WEIGHT (kg/4m)
SH2-0013-R/B	13	16	4	3.000	0.740	10	0.35
SH2-0016-R/B	16	19	4	3.000	0.740	12	0.44
SH2-0019-R/B	19	22	4	3.000	0.730	13	0.50
SH2-0022-R/B	22	25	4	3.000	0.720	14	0.53
SH2-0025-R/B	25	28	4	2.800	0.710	18	0.60
SH2-0032-R/B	32	35	4	2.700	0.650	20	0.65
SH2-0038-R/B	38	41	4	2.600	0.600	24	0.76
SH2-0040-R/B	40	43	4	2.600	0.600	26	0.80
SH2-0042-R/B	42	45	4	2.600	0.590	26	0.85
SH2-0044-R/B	44	48	4	2.600	0.580	27	0.95
SH2-0045-R/B	45	49	4	2.600	0.580	27	1.00
SH2-0050-R/B	50	54	4	2.600	0.520	31	1.05
SH2-0051-R/B	51	55	4	2.600	0.520	31	1.10
SH2-0057-R/B	57	61	4	2.500	0.480	34	1.26
SH2-0060-R/B	60	64	4	2.500	0.480	34	1.32
SH2-0063-R/B	63	67	4	2.400	0.460	37	1.40
SH2-0070-R/B	70	75	4	2.100	0.440	40	1.50
SH2-0076-R/B	76	81	4	2.100	0.430	43	1.60
SH2-0080-R/B	80	85	4	2.100	0.420	45	1.65
SH2-0083-R/B	83	88	4	2.100	0.410	47	1.72
SH2-0089-R/B	89	94	4	2.000	0.400	50	1.80
SH2-0102-R/B	102	107	4	1.900	0.350	56	1.98
SH2-0108-R/B	108	113	4	1.800	0.330	60	2.10
SH2-0110-R/B	110	115	4	1.800	0.330	60	2.20
SH2-0115-R/B	115	120	4	1.500	0.300	63	2.44
SH2-0127-R/B	127	133	4	1.500	0.230	70	2.56
SH2-0141-R/B	141	147	4	1.300	0.200	76	2.70
SH2-0150-R/B	150	156	4	1.200	0.170	82	3.00
SH2-0152-R/B	152	158	4	1.200	0.170	82	3.06
SH2-0159-R/B	159	165	4	1.100	0.160	86	3.20
SH2-0164-R/B	164	170	4	1.100	0.140	89	3.40
SH2-0169-R/B	169	176	4	1.100	0.140	89	3.60
SH2-0180-R/B	180	187	4	1.000	0.120	95	3.90
SH2-0203-R/B	203	210	4	0.700	0.090	108	4.48
SH2-0254-R/B	254	261	4	0.500	0.070	133	5.58
SH2-0306-R/B	306	313	4	0.500	0.070	159	7.00

"R" - RED COLOR; "B" - BLACK COLOR.



DOUBLE LAYER SILICONE DUCT HOSE - CUSTOMISED LENGTH WITH CUFFS

DESCRIPTION

Double layer Silicone Duct Hose with cuffs on one or two ends has better performance regarding air tightness. The soft sleeve has good elasticity, since no steel wire inside, it could be fixed well on the applied equipment.

CONSTRUCTION & MATERIAL

- Wall: 2 layer silicone fabric, spired tape.
- Reinforcement: spring steel wire is hidden between the two layers fabric. Glass cord on the outside surface.
- **Soft cuffs on the one or two ends**
- **With or without glass cord on the surface**



Applications

- For granulate/ plastic dryer, hot air dryer machine in plastic industry.
- For blowing machine, deliver hot or cool air.
- As component for different machines which produce hot or cool air.
- Widely used for vehicle engines like auto, air-craft, trucks, even military tank.

Properties

- highly light and flexible
- very good heat resistance
- It is leak-proof; kink-proof
- It has smooth interior
- The long life time of this duct is around 5~10 years in normal working condition

Temperature Range

- -70 °C approx. to +270 °C approx.
- short time to +300 °C approx.

Installation requirement

- Avoid abrasion outside; Keep some space between the hoses and walls, ground, or machines.
- Don't apply too strong bending stress and follow the corresponding bending radius.
- Keep away from strong chemical corrosion.
- Don't apply for higher working temperature over above properties.

Available Sizes:

- 13mm ~ 306mm
- As customised.



DOUBLE LAYER NEOPRENE DUCT HOSE - 4M LENGTH

DESCRIPTION

Double layer Neoprene Duct Hose is made of 2 layers neoprene coated glass fiber fabric, stainless spring steel is hidden between the 2 layers of fabric. Glass fiber cord spiral on the outer surface. Applicable for high temperature and low pressure. Working temperature: $-50^{\circ}\text{C} \sim +150^{\circ}\text{C}$



CONSTRUCTION & MATERIAL

- Wall: 2 layer neoprene fabric, spired tape.
- Reinforcement: spring steel wire is hidden between the two layers fabric. Glass cord on the outside surface.

Applications

- For granulate/ plastic dryer, hot air dryer machine in plastic industry.
- For blowing machine, deliver hot or cool air.
- As component for different machines which produce hot or cool air.
- Widely used for vehicle engines like auto, air-craft, trucks, even military tank.

Properties

- Color black
- highly light and flexible
- very good heat resistance
- It is leak-proof; kink-proof
- It has smooth interior
- The long life time of this duct is around 5~10 years in normal working condition

Temperature Range

- -50°C approx. to $+130^{\circ}\text{C}$ approx.
- short time to $+150^{\circ}\text{C}$ approx.

Installation requirement

- Avoid abrasion outside; Keep some space between the hoses and walls, ground, or machines.
- Don't apply too strong bending stress and follow the corresponding bending radius.
- Keep away from strong chemical corrosion.
- Don't apply for higher working temperature over above properties.

Available Sizes:

- 13mm ~ 306mm
- Standard 4m/pc

TECHNICAL DATA

ITEM NO.	ID (mm)	OD (mm)	LENGTH (m)	OVER PRESSURE (bar)	VACUUM (bar)	BENDING RADIUS (mm)	WEIGHT (kg/4m)
NH2-0013	13	16	4	3.000	0.740	10	0.35
NH2-0016	16	19	4	3.000	0.740	12	0.44
NH2-0019	19	22	4	3.000	0.730	13	0.50
NH2-0022	22	25	4	3.000	0.720	14	0.53
NH2-0025	25	28	4	2.800	0.710	18	0.60
NH2-0032	32	35	4	2.700	0.650	20	0.65
NH2-0038	38	41	4	2.600	0.600	24	0.76
NH2-0040	40	43	4	2.600	0.600	26	0.80
NH2-0042	42	45	4	2.600	0.590	26	0.85
NH2-0044	44	48	4	2.600	0.580	27	0.95
NH2-0045	45	49	4	2.600	0.580	27	1.00
NH2-0050	50	54	4	2.600	0.520	31	1.05
NH2-0051	51	55	4	2.600	0.520	31	1.10
NH2-0057	57	61	4	2.500	0.480	34	1.26
NH2-0060	60	64	4	2.500	0.480	34	1.32
NH2-0063	63	67	4	2.400	0.460	37	1.40
NH2-0070	70	76	4	2.100	0.440	40	1.50
NH2-0076	76	81	4	2.100	0.430	43	1.60
NH2-0080	80	85	4	2.100	0.420	45	1.65
NH2-0083	83	88	4	2.100	0.410	47	1.72
NH2-0089	89	94	4	2.000	0.400	50	1.80
NH2-0102	102	107	4	1.900	0.350	56	1.98
NH2-0108	108	113	4	1.800	0.330	60	2.10
NH2-0110	110	115	4	1.800	0.330	60	2.20
NH2-0115	115	120	4	1.500	0.300	63	2.44
NH2-0127	127	133	4	1.500	0.230	70	2.56
NH2-0141	141	147	4	1.300	0.200	76	2.70
NH2-0150	150	156	4	1.200	0.170	82	3.00
NH2-0152	152	158	4	1.200	0.170	82	3.06
NH2-0159	159	165	4	1.100	0.160	86	3.20
NH2-0164	164	170	4	1.100	0.140	89	3.40
NH2-0169	169	176	4	1.100	0.140	89	3.60
NH2-0180	180	187	4	1.000	0.120	95	3.90
NH2-0203	203	210	4	0.700	0.090	108	4.48
NH2-0254	254	261	4	0.500	0.070	133	5.58
NH2-0306	306	313	4	0.500	0.070	159	7.00



DOUBLE LAYER NEOPRENE DUCT HOSE - CUSTOMISED LENGTH WITH CUFFS

DESCRIPTION

Double layer Neoprene Duct Hose with cuffs on one or two ends has better performance regarding air tightness. The soft sleeve has good elasticity, since no steel wire inside, it could be fixed well on the applied equipment.

CONSTRUCTION & MATERIAL

- Wall: 2 layer neoprene fabric, spired tape.
- Reinforcement: spring steel wire is hidden between the two layers fabric. Glass cord on the outside surface.
- Soft cuffs on the one or two ends
- With or without glass cord on the surface



Applications

- For granulate/ plastic dryer, hot air dryer machine in plastic industry.
- For blowing machine, deliver hot or cool air.
- As component for different machines which produce hot or cool air.
- Widely used for vehicle engines like auto, air-craft, trucks, even military tank.

Properties

- Color black
- highly light and flexible
- very good heat resistance
- It is leak-proof; kink-proof
- It has smooth interior
- The long life time of this duct is around 5~10 years in normal working condition

Temperature Range

- -50 °C approx. to +130 °C approx.
- short time to +150 °C approx.

Installation requirement

- Avoid abrasion outside; Keep some space between the hoses and walls, ground, or machines.
- Don't apply too strong bending stress and follow the corresponding bending radius.
- Keep away from strong chemical corrosion.
- Don't apply for higher working temperature over above properties.

Available Sizes:

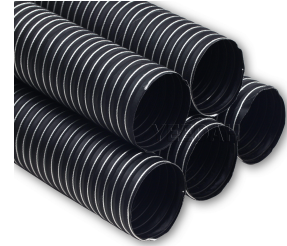
- 13mm ~ 306mm
- Customised length



SINGLE LAYER NEOPRENE DUCT HOSE - 4M LENGTH

DESCRIPTION

Single layer Neoprene Duct Hose is made of 1 layer neoprene coated glass fiber fabric, stainless spring steel is visible on inner side. Glass fiber cord spiral on the outer surface. Applicable for high temperature and low pressure. Working temperature: $-50^{\circ}\text{C} \sim +150^{\circ}\text{C}$



CONSTRUCTION & MATERIAL

- Wall: 1 layer neoprene fabric, spired tape.
- Reinforcement: spring steel wire is visible on inner side. Glass cord on the outside surface.

Applications

- For granulate/ plastic dryer, hot air dryer machine in plastic industry.
- For blowing machine, deliver hot or cool air.
- As component for different machines which produce hot or cool air.
- Widely used for vehicle engines like auto, air-craft, trucks, even military tank.

Properties

- Color black
- highly light and flexible
- very good heat resistance
- It is leak-proof; kink-proof
- It has smooth interior

Temperature Range

- -50°C approx. to $+130^{\circ}\text{C}$ approx.
- short time to $+150^{\circ}\text{C}$ approx.

Installation requirement

- Avoid abrasion outside; Keep some space between the hoses and walls, ground, or machines.
- Don't apply too strong bending stress and follow the corresponding bending radius.
- Keep away from strong chemical corrosion.
- Don't apply for higher working temperature over above properties.

Available Sizes:

- 13mm ~ 306mm
- Standard 4m/pc

TECHNICAL DATA

ITEM NO.	ID (mm)	OD (mm)	LENGTH (m)	OVER PRESSURE (bar)	VACUUM (bar)	BENDING RADIUS (mm)	WEIGHT (kg/4m)
NH1-0013	13	16	4	3.000	0.740	10	0.35
NH1-0016	16	19	4	3.000	0.740	12	0.38
NH1-0019	19	22	4	3.000	0.730	13	0.40
NH1-0022	22	25	4	3.000	0.720	14	0.50
NH1-0025	25	28	4	2.800	0.710	18	0.52
NH1-0032	32	35	4	2.700	0.650	20	0.60
NH1-0038	38	41	4	2.600	0.600	24	0.76
NH1-0040	40	43	4	2.600	0.600	26	0.80
NH1-0042	42	45	4	2.600	0.590	26	0.85
NH1-0044	44	48	4	2.600	0.580	27	0.95
NH1-0045	45	49	4	2.600	0.580	27	1.00
NH1-0050	50	54	4	2.600	0.520	31	1.05
NH1-0051	51	55	4	2.600	0.520	31	1.10
NH1-0057	57	61	4	2.500	0.480	34	1.26
NH1-0060	60	64	4	2.500	0.480	34	1.32
NH1-0063	63	67	4	2.400	0.460	37	1.40
NH1-0070	70	76	4	2.100	0.440	40	1.50
NH1-0076	76	81	4	2.100	0.430	43	1.60
NH1-0080	80	85	4	2.100	0.420	45	1.65
NH1-0083	83	88	4	2.100	0.410	47	1.72
NH1-0089	89	94	4	2.000	0.400	50	2.58
NH1-0102	102	107	4	1.900	0.350	56	3.20
NH1-0108	108	113	4	1.800	0.330	60	2.10
NH1-0110	110	115	4	1.800	0.330	60	2.20
NH1-0115	115	120	4	1.500	0.300	63	3.00
NH1-0127	127	133	4	1.500	0.230	70	3.16
NH1-0141	141	147	4	1.300	0.200	76	2.70
NH1-0150	150	156	4	1.200	0.170	82	3.00
NH1-0152	152	158	4	1.200	0.170	82	3.80
NH1-0159	159	165	4	1.100	0.160	86	3.20
NH1-0164	164	170	4	1.100	0.140	89	3.40
NH1-0169	169	176	4	1.100	0.140	89	3.60
NH1-0180	180	187	4	1.000	0.120	95	3.90
NH1-0203	203	210	4	0.700	0.090	108	5.04
NH1-0254	254	261	4	0.500	0.070	133	6.00
NH1-0306	306	313	4	0.500	0.070	159	7.50



SINGLE LAYER NEOPRENE DUCT HOSE - CUSTOMISED LENGTH WITH CUFFS

DESCRIPTION

Single layer Neoprene Duct Hose with cuffs on one or two ends has better performance regarding air tightness. The soft sleeve has good elasticity, since no steel wire inside, it could be fixed well on the applied equipment.



CONSTRUCTION & MATERIAL

- Wall: 1 layer neoprene fabric, spired tape.
- Reinforcement: spring steel wire is visible on inner side. Glass cord on the outside surface.
- Soft cuffs on the one or two ends
- With or without glass cord on the surface

Applications

- For granulate/ plastic dryer, hot air dryer machine in plastic industry.
- For blowing machine, deliver hot or cool air.
- As component for different machines which produce hot or cool air.
- Widely used for vehicle engines like auto, air-craft, trucks, even military tank.

Properties

- Color black
- highly light and flexible
- very good heat resistance
- It is leak-proof; kink-proof
- It has smooth interior

Temperature Range

- -50 °C approx. to +130 °C approx.
- short time to +150 °C approx.

Installation requirement

- Avoid abrasion outside; Keep some space between the hoses and walls, ground, or machines.
- Don't apply too strong bending stress and follow the corresponding bending radius.
- Keep away from strong chemical corrosion.
- Don't apply for higher working temperature over above properties.

Available Sizes:

- 13mm ~ 306mm
- Customised length



PVC DENTAL HOSE

DESCRIPTION

Double layer PVC wall, with rigid PVC wire reinforcement. Light weight and flexible. Components used for dental equipment, medical equipment, beauty equipment, cable protection of X-ray machines, or other Special medical equipment.

CONSTRUCTION & MATERIAL

- Wall: 2 layer PVC material.
- Reinforcement: rigid PVC wire.

Applications

- For dental equipment.
- For medical equipment.
- For beauty device.
- Used as sleeve for cable and wire.

Available Sizes:

- 10mm ~ 25mm
- Standard 10m/pc

Installation requirement

- Avoid abrasion outside; Keep some space between the hoses and walls, ground, or machines.
- Keep away from strong chemical corrosion.
- Don't apply for higher working temperature over above properties.



Properties

- Color grey
- highly light and flexible
- good air tight
- It has smooth interior

Temperature Range

- -10 °C approx. to +60 °C approx.



SILICONE DUCT CONNECTOR

DESCRIPTION

The main material is double silicone coated glass fiber fabric, and galvanized iron plate. The two tight special seams between the fabric, and metal plate are air proof.

CONSTRUCTION & MATERIAL

- Metal: galvanized iron plate;
- Fabric: silicone coated glass fiber.

Applications

To meet every type of installation requirement, apply for industrial, commercial and residential, ventilation systems to eliminate vibrations caused by air handling units, fans and other equipment connected to air ducts.



Properties

- easy and quick to be installed;
- strong air tight lock seams;
- available in various widths of fabric and metal.
- high temperature resistant.
- fire resistant.

Temperature Range

- -70 °C approx. to +270 °C approx.
- short time to +300 °C approx.

Installation requirement

- Avoid abrasion outside; Keep some space between the other surface.
- Keep away from strong chemical corrosion.
- Don't apply for higher working temperature over above properties.

Dimensions:

ITEM NO.	Metal spec.		Fabric spec.		
	Metal width(mm)	Metal thickness (mm)	Fabric thickness (mm)	Fabric width (mm)	COLOR
45 - 70 - 45	45	0.40 / 0.60	0.5 ~ 1.50	70	red / black / grey
45 - 100 - 45	45	0.40 / 0.60	0.5 ~ 1.50	100	red / black / grey
45 - 150 - 45	45	0.40 / 0.60	0.5 ~ 1.50	150	red / black / grey
70 - 100 - 70	70	0.40 / 0.60	0.5 ~ 1.50	100	red / black / grey
70 - 150 - 70	70	0.40 / 0.60	0.5 ~ 1.50	150	red / black / grey
70 - 200 - 70	70	0.40 / 0.60	0.5 ~ 1.50	200	red / black / grey
93 - 100 - 93	93	0.40 / 0.60	0.5 ~ 1.50	100	red / black / grey

Note:

1. For metal width, 40mm and 75mm are also available.
2. Other sizes could be made per customer's requirement.



PVC DUCT CONNECTOR

DESCRIPTION

The main material is PVC coated polyester, and galvanized iron plate. The two tight special seams between the fabric, and metal plate are air proof.

CONSTRUCTION & MATERIAL

- Metal: galvanized iron plate;
- Fabric: PVC coated polyester fabric

Applications

To meet every type of installation requirement, apply for industrial, commercial and residential, ventilation systems to eliminate vibrations caused by air handling units, fans and other equipment connected to air ducts.

Properties

- easy and quick to be installed;
- strong air tight lock seams;
- available in various widths of fabric and metal;
- water resistant.

Temperature Range

- -40 °C approx. to +70 °C approx.

Installation requirement

- Avoid abrasion outside; Keep some space between the other surface.
- Keep away from strong chemical corrosion.
- Don't apply for higher working temperature over above properties.



Dimensions:

ITEM NO.	Metal spec.		Fabric spec.		
	Metal width(mm)	Metal thickness (mm)	Fabric thickness (mm)	Fabric width (mm)	COLOR
45 - 70 - 45	45	0.40 / 0.60	0.40 / 0.55	70	blue / black
45 - 100 - 45	45	0.40 / 0.60	0.40 / 0.55	100	blue / black
45 - 150 - 45	45	0.40 / 0.60	0.40 / 0.55	150	blue / black
70 - 100 - 70	70	0.40 / 0.60	0.40 / 0.55	100	blue / black
70 - 150 - 70	70	0.40 / 0.60	0.40 / 0.55	150	blue / black
70 - 200 - 70	70	0.40 / 0.60	0.40 / 0.55	200	blue / black
93 - 100 - 93	93	0.40 / 0.60	0.40 / 0.55	100	blue / black

Note:

1. For metal width, 40mm and 75mm are also available.
2. Other sizes could be made per customer's requirement.



NEOPRENE DUCT CONNECTOR

DESCRIPTION

The main material is double neoprene coated glass fiber fabric, and galvanized iron plate. The two tight special seams between the fabric, and metal plate are air proof.

CONSTRUCTION & MATERIAL

- Metal: galvanized iron plate;
- Fabric: neoprene coated glass fiber.

Applications

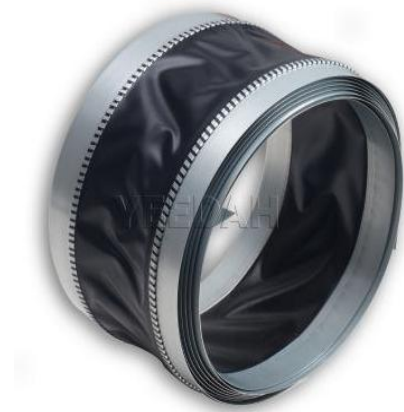
To meet every type of installation requirement, apply for industrial, commercial and residential, ventilation systems to eliminate vibrations caused by air handling units, fans and other equipment connected to air ducts.

Properties

- easy and quick to be installed;
- strong air tight lock seams;
- available in various widths of fabric and metal.
- high temperature resistant.
- fire resistant.

Installation requirement

- Avoid abrasion outside; Keep some space between the other surface.
- Keep away from strong chemical corrosion.
- Don't apply for higher working temperature over above properties.



Temperature Range

- -50 °C approx. to +130 °C approx.
- short time to +150 °C approx.

Dimensions:

ITEM NO.	Metal spec.		Fabric spec.		
	Metal width(mm)	Metal thickness (mm)	Fabric thickness (mm)	Fabric width (mm)	COLOR
45 - 70 - 45	45	0.40 / 0.60	0.50	70	black
45 - 100 - 45	45	0.40 / 0.60	0.50	100	black
45 - 150 - 45	45	0.40 / 0.60	0.50	150	black
70 - 100 - 70	70	0.40 / 0.60	0.50	100	black
70 - 150 - 70	70	0.40 / 0.60	0.50	150	black
70 - 200 - 70	70	0.40 / 0.60	0.50	200	black
93 - 100 - 93	93	0.40 / 0.60	0.50	100	black

Note:

1. For metal width, 40mm and 75mm are also available.
2. Other sizes could be made per customer's requirement.



ROUND PVC DUCT CONNECTOR

DESCRIPTION

The main material is PVC coated polyester, the soft flange is made in the same material.

CONSTRUCTION & MATERIAL

- Flange: PVC coated Polyester.
- Fabric: same material under special sewing process.
- Size: Per customer's requirement.



Applications

To be installed in blower machine, to connector blower and pipe, reduce noise and vibration.

Properties

- easy and quick to be installed;
- strong air tight lock seams;
- available in various size;
- water resistant.

Temperature Range

- -40 °C approx. to +70 °C approx.

Installation requirement

- Avoid abrasion outside; Keep some space between the other surface.
- Keep away from strong chemical corrosion.
- Don't apply for higher working temperature over above properties.



SILICONE ARAMID DUCT CONNECTOR

DESCRIPTION

The main material is silicone coated aramid fiber.

CONSTRUCTION & MATERIAL

- Fabric: silicone coated aramid fiber. The soft flange is made by silicone rubber sheet.
- Size and thickness per requirement.
- Steel wire ring frame reinforced.
- Main colors: red/black/grey.



Applications

As component of the train engine, used for delivering the hot air during working process.

Properties

- Light weight.
- Soft flange.
- Abrasion resistance.
- High temperature resistant.
- Fire resistant.

Temperature Range

- -70 °C approx. to +270 °C approx.
- short time to +300 °C approx.

Installation requirement

- Keep away from strong chemical corrosion.
- Don't apply for higher working temperature over above properties.



SPECIAL SIZE SILICONE DUCT CONNECTOR

DESCRIPTION

The main material is silicone coated glass fiber fabric.

CONSTRUCTION & MATERIAL

- Fabric: silicone coated glass fiber. The soft flange is made by special sewing process.
- Size and thickness per requirement.
- Main colors: red/black/grey.



Applications

To meet every type of installation requirement, apply for industrial, commercial and residential, ventilation systems to eliminate vibrations caused by air handling units, fans and other equipment connected to air ducts.

Properties

- easy and quick to be installed;
- strong air tight lock seams;
- available in various widths of fabric and metal.
- high temperature resistant.
- fire resistant.

Temperature Range

- -70 °C approx. to +270 °C approx.
- short time to +300 °C approx.

Installation requirement

- Avoid abrasion outside; Keep some space between the other surface.
- Keep away from strong chemical corrosion.
- Don't apply for higher working temperature over above properties.



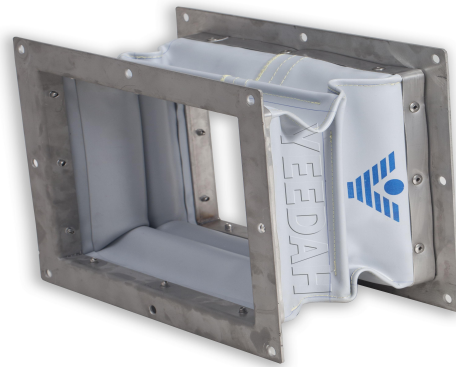
SQUARE PVC DUCT CONNECTOR

DESCRIPTION

The main material is PVC coated polyester, with stainless steel flange.

CONSTRUCTION & MATERIAL

- Flange: Stainless steel plate
- Fabric: same material under special sewing process.
- Reinforcement: steel wire.
- Size: Per customer's requirement.



Applications

To be installed in blower machine, to connector blower and pipe, reduce noise and vibration.

Properties

- easy and quick to be installed;
- strong air tight lock seams;
- available in various size;
- water resistant.

Temperature Range

- -40 °C approx. to +70 °C approx.

Installation requirement

- Avoid abrasion outside; Keep some space between the other surface.
- Keep away from strong chemical corrosion.
- Don't apply for higher working temperature over above properties.



PVC COATED POLYESTER

DESCRIPTION

PVC coated Polyester is featured by high strength, excellent quality stability and self-cleaning of surface, anti-aging and various weather resistance performance. It has been widely used as awnings, truck cover, side curtain, tents, inflatable products, adumbral materials for building facility and house.



CONSTRUCTION & MATERIAL

- Basic fabric: polyester
- Coating: PVC material

Applications

- Truck Cover, Container Roof.
- Dust hood, raincover, playground,
- Flexible duct connector;
- Army tent, carriage tent and house building
- Amusement device.

Properties

- Excellent tensile, tearing and adhesion strength,
 - Humidityproof, waterproof, stain resistance
 - Good Flame-retardant
 - Protection against any weather condition.
- (Oxidation resistance; Anti-mildew; Anti-UV, Moisture-proof, Cold-resistant and so o

Installation requirement

- Avoid abrasion outside; Keep some space between the other surface.
- Keep away from strong chemical corrosion.
- Don't apply for higher working temperature over above properties.

Temperature Range

- -40 °C approx. to +70 °C approx.

TECHNICAL DATA

Picture	Total thickness (mm)	Basic Material	Coating material	Total Weight for fabric (g/m ²)	Width (m)	Length/roll (m)	Weight/roll (kgs)	OD/roll (cm)	CBM/roll (m ³)	Coating process
	0.40	POLYESTER	PVC	480	2.1	60	61	22	0.08	2 sides coating
	0.55			640	2.06	50	64	20	0.06	



SILICONE COATED GLASS FIBER FABRIC

DESCRIPTION

Silicone coated fiberglass fabric is a kind of high performance and multifunction composite material, it's widely used in Aerospace, Chemical, Petroleum, Large Power Generation Equipment, Machinery, Metallurgy, Electrical Insulation, Building, Transportation and other fields.

CONSTRUCTION & MATERIAL

- Basic fabric: glass fiber in different thickness;
- Coating: silicone rubber.

Applications

- Heat/electrical insulation jacket;
- Laminated mat;
- Flexible duct connector;
- Hot air blower;
- Flexible duct connector;
- Non-metal compensator or Fabric expansion joints;
- Fireproof curtain & blanket;
- Welding blanket;
- Construction electrical protection cover;
- Other fire-control systems.



Properties

- Discharge of all types of liquids, moist air;
- Excellent heat and cold resistance (long-term working temperature from -70 to 260°C);
- Good aging resistance;
- High strength;
- Chemical acid and alkali resistant.

Temperature Range

- -70 °C approx. to +270 °C approx.
- short time to +300 °C approx.

Installation requirement

- Avoid abrasion outside; Keep some space between the other surface.
- Keep away from strong chemical corrosion.
- Don't apply for higher working temperature over above properties.

TECHNICAL DATA

Total thickness (mm)	Toal Weight for finished fabric (g/m2)	Basic fabric thickness (mm)	Basic fabric model no.	Weight for basic fabric (g/m2)	Coating thickness (mm)	Coating weight (g/m2)	Width (m)	Length /roll (m)	Weight/roll (kgs)	OD/roll (cm)	CBM/roll (m3)	manufacturing process
0.25	320	0.18	7628	200.00	0.04	120.00	1.27	100	40.6	20	0.04	coating
0.30	400	0.28	280	280.00	0.05	120.00	1.00	100	40	20	0.03	
0.45	600	0.40	3732	430.00	0.05	170.00	1.20	50	36	19.5	0.04	
0.60	970	0.40	3732	430.00	0.20	540.00	1.20	50	58	22.5	0.05	1 side coating, 1 side calendering
0.80	1040	0.80	3784	840.00	0.05	200.00	1.00	50	52	26.5	0.06	2 sides coating
1.00	1500	0.80	3784	840.00	0.20	660.00	1.00	50	75.0	28.0	0.06	1 side coating, 1 side blank
1.00	1700	0.70	666	660.00	0.30	1040.00	1.00	50	85.0	28.0	0.06	2 sides calendering
1.20	1900	0.80	3784	840.00	0.40	1060.00	1.00	50	95.0	30.0	0.07	2 sides calendering
1.20	1780	1.00	with wire inside	1080.00	0.20	700.00	1.25	30	68	22.5	0.05	1 side calendering
1.30	2280	1.00		1080.00	0.30	1200.00	1.25	30	85	24.5	0.05	2 sides calendering
1.50	2400	0.80	3784	840.00	0.70	1560.00	1.00	50	120	37.5	0.11	2 sides calendering
2.00	3140	0.80	3784	840.00	1.20	2300.00	1.00	25	79	25	0.06	2 sides calendering
2.50	3240	0.80	3784	840.00	1.70	2400.00	1.00	25	81	30	0.04	2 sides calendering
3.00	4720	1.50	3788	1600.00	1.50	3120.00	1.00	25	118	32	0.04	2 sides calendering
3.20	4130	0.40	3732	430.00	2.20	3700.00	1.00	25	114	32.5	0.04	2 sides calendering



SILICONE COATED ARAMID FIBER

DESCRIPTION

Silicone coated Kevlar fabric is made of aramid fiber with silicone coating on one or two sides. It has good flexibility with great abrasion and cut resistance, low specific gravity, stable dimension, high tensile strength, high temperature and chemical resistance features, widely used in aircraft, concrete project, protecting garments, bulletproof sheet, sports equipment and car parts, etc.

CONSTRUCTION & MATERIAL

- Basic fabric: aramid fiber in different thickness;
- Coating: silicone rubber.

Applications

- Building protection;
- Flexible duct;
- Flexible duct connector;
- Fabric expansion joint;
- Construction electrical protection cover

Installation requirement

- Avoid abrasion outside; Keep some space between the other surface.
- Keep away from strong chemical corrosion.
- Don't apply for higher working temperature over above properties.



Temperature Range

- -70 °C approx. to +270 °C approx.
- short time to +300 °C approx.

Properties

- Discharge of all types of liquids, moist air.
- Excellent heat and cold resistance.
- Good UV resistance
- High strength
- Chemical acid and alkali resistant

TECHNICAL DATA

Total thickness (mm)	Total weight for finished fabric (g/m ²)	Basic fabric thickness (mm)	Basic fabric model no.	Weight for basic fabric (g/m ²)	Coating thickness (mm)	Coating weight (g/m ²)	Width (m)	Length/roll (m)	Weight/roll (kgs)	OD/roll (cm)	CBM/roll (m ³)	Coating process
1.00	1300	0.40	purple	200.00	0.60	1100.00	1.20	50	80	25	0.12	calendering (visible woven pattern)
1.00	1300	0.40	pink	200.00	0.60	1100.00	1.20	50	80	25	0.06	calendering (invisible woven)
0.50	400	0.40	grey	200.00	0.10	200.00	1.20	50	24	20	0.04	coating



NEOPRENE COATED GLASS FIBER FABRIC

DESCRIPTION

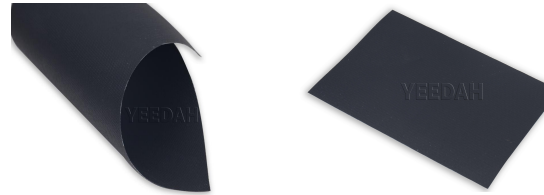
Neoprene coated fiberglass fabric is a kind of high performance and multifunction composite material, it's widely used in Aerospace, Chemical, Petroleum, Large Power Generation Equipment, Machinery, Metallurgy, Electrical Insulation, Building, Transportation and other fields.

CONSTRUCTION & MATERIAL

- Basic fabric: glass fiber in different thickness;
- Coating: neoprene rubber.

Applications

- Heat/electrical insulation jacket;
- Laminated mat;
- Flexible duct connector;
- Hot air blower;
- Flexible duct connector;
- Non-metal compensator or Fabric expansion joints;
- Fireproof curtain & blanket;
- Welding blanket;
- Construction electrical protection cover;
- Other fire-control systems.



Properties

- Discharge of all types of liquids, moist air;
- Excellent heat and cold resistance (long-term working temperature from -70 to 260 °C);
- Good aging resistance;
- High strength;
- Chemical acid and alkali resistant.

Temperature Range

- -50 °C approx. to +130 °C approx.
- short time to +150 °C approx.

Installation requirement

- Avoid abrasion outside; Keep some space between the other surface.
- Keep away from strong chemical corrosion.
- Don't apply for higher working temperature over above properties.

TECHNICAL DATA

Total thickness (mm)	Total weight (g/m ²)	Basic fabric thickness (mm)	Basic fabric model no.	Weight for basic fabric (g/m ²)	Coating thickness (mm)	Coating weight (g/m ²)	Width (m)	Length/roll (m)	Weight/roll (kgs)	OD/roll (cm)	CBM/roll (m ³)	Coating process
0.35	470	0.19	7628	200	0.16	270	1.27	100	71	26	0.07	2 sides coating
0.5	580	0.4	3732	430	0.1	150	1.5	100	93.5	25	0.07	2 sides coating