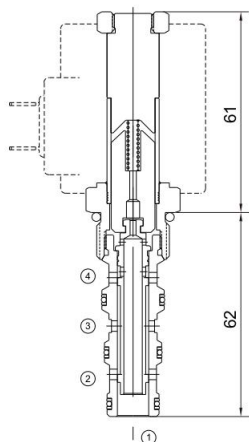
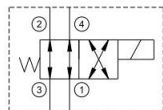




MSV-10-40

二位四通电磁阀
4-Way, 2-Position

机能符号 Symbol



技术参数 Specifications

· 工作压力 Operating Pressure	207BAR
· 流量 Flow	23L/min
· 内泄漏 Internal Leakage	82ml/min.max.at operating pressure
· 温度 Temperature	-30°C to +120°C(-22°F to +250°F)
· 插孔 Cavity	10-4 see page K-12
· 流体 Fluids	Mineral-based fluids with viscosities of 7.4 to 420 cSt.

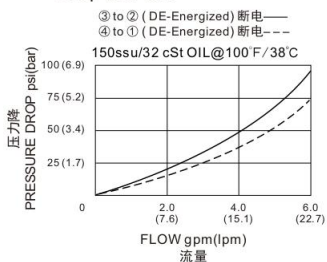
产品特性 Features

- 硬化处理 零件耐久性强
Hardened, precision ground parts for durability
- 工业通用插孔
Industry common cavity
- 高效能的电磁铁结构
Efficient wet-armature construction
- 可持续工作的电磁铁
Continuous-duty solenoid
- 紧凑的结构
Compact size

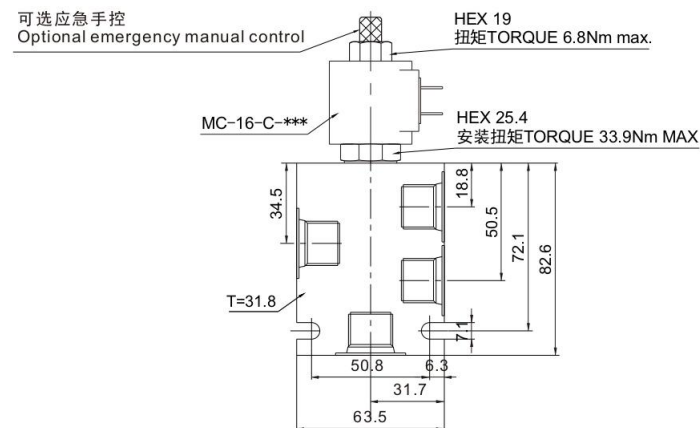
工作 Operation

当电磁铁断电时，此阀允许油液③和②流动，④和①流动；
当电磁铁通电时，此阀允许油液③和④流动，①和②流动。
When de-energized, the valve flow paths are port ③ to port ②,
and port ④ to port ①;
When energized, the valve's spool shifts to open port ③ to port ④,
and port ① to port ②.

压力-流量性能曲线
Performance Curve Pressure
Drop vs. Flow



安装尺寸 INSTALLATION DIMENSIONS



订购型号 Order Type

MSV-10-40 * - * - * * * - * *

I II III IV V VI VII

- | | | |
|--|--|---|
| I. 手控应急 Manual Emergency
空白=无手控应急 Not Manual
M=手控应急 Manual Emergency | III. 电压 Voltage
12=12V
24=24V
110V=110V
220V=220V | VI. 阀块材质 BODY MATERIAL
A=6061-T6铝
耐压强度207Bar
6061-T6 aluminum
alloy rated at 207Bar
S=钢材 耐压强度350Bar
steel rated at 350Bar |
| II. 油封 Seal-Kits
N=丁腈橡胶 Buna N
V=氟橡胶 Viton | IV. 线圈连接 Coil Connection
A=安普插头 Amp Plug
B=插片 Double Spade
D=双线引出 Double Lead
S=单线引出 Single Lead
H=DIN43650 | VII. 阀块油口 BODY PORTING
6T=SAE 6T
8T=SAE 8T
3G=G3/8
3N=NPT3/8
其他螺纹油口是可选择的
Other porting is available |
| | V. 电流类型 Current Type
D=直流电 Direct current
A=交流电 Alternating current | |