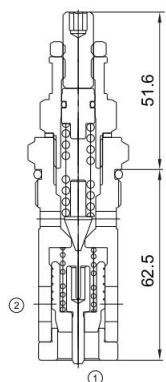




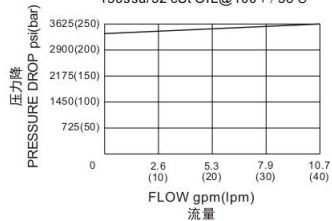
MHCD6.1

先导式溢流阀(反向单向型)
Pilot-operated Relief Valve
(Reverse one-way type)

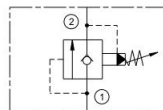


压力-流量性能曲线
Performance Curve Pressure
Drop vs.Flow

150ssu/32 cSt OIL@100°F/38°C



机能符号 Symbol



技术参数 Specifications

· 工作压力 Operating Pressure	350BAR
· 流量 Flow	110L/min
· 调压范围 Pressure Range	3bar-300bar ,Preset:230bar(check:1.5bar)
· 内泄漏 Internal Leakage	30ml/min.max.to 80% of normal setting
· 温度 Temperature	-30°C to +120°C(-22°F to +250°F)
· 插孔 Cavity	HCD6.1 see page K-32
· 流体 Fluids	Mineral-based fluids with viscosities of 7.4 to 420 cSt.

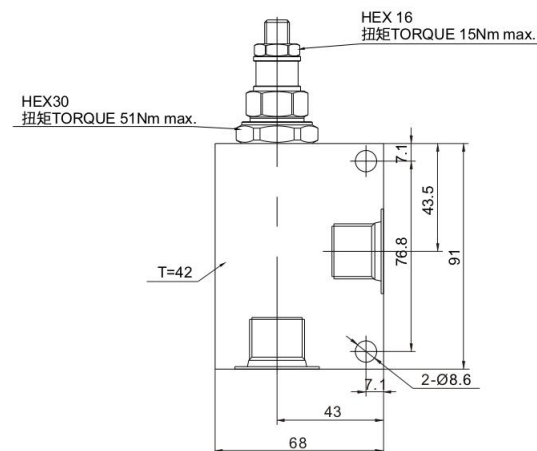
产品特性 Features

- 迅速响应压力变化
Fast response to pressure surges
- 长寿命的阀
Hardened poppet and seat for long life
- 调压杆可被锁定住
Adjustment may be locked in place
- 工业通用插孔
Industry common cavity
- 紧凑的结构
Compact size
- 调节时, 弹簧不会被压并
Adjustment prevents spring from going solid

工作 Operation

当①口压力超过弹簧设定压力时, 锥阀芯打开, ①到②开始溢流, 防止系统过压。当在②口的压力超过开启压力, ②到①开启。
The valve prevents flow from ① to ② until the set crack pressure at ① is achieved. The poppet then unseat allowing flow from ① to ② protecting the circuit from over pressurization. When pressure at ② rises above the springs bias pressure, the poppet is lifted and flow allowed from ② to ①.

安装尺寸 INSTALLATION DIMENSIONS



订购型号 Order Type

MHCD6.1 - * - * *

I II III

I. 油封 Seal-Kits
N=丁腈橡胶 Buna N
V=氟橡胶 Viton

II. 阀块材质 BODY MATERIAL
A=6061-T6铝
耐压强度207Bar
6061-T6 aluminum
alloy rated at 207Bar
S=钢材 耐压强度350Bar
steel rated at 350Bar

III. 阀块油口 BODY PORTING
6T=SAE 6T
8T=SAE 8T
4G=G1/2
4N=NPT1/2
其他螺纹油口是可选择的
Other porting is available