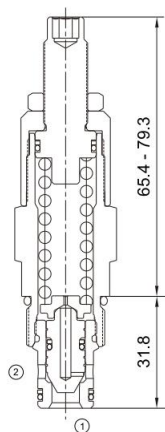


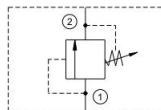


MADRV2-10

直动式溢流阀
Directly Operated Relief Valve



机能符号 Symbol



技术参数 Specifications

· 工作压力 Operating Pressure	207BAR
· 流量 Flow	37.5L/min
· 内泄漏 Internal Leakage	5drops/min.max.to 80% of nominal setting
· 温度 Temperature	-30°C to +120°C(-22°F to +250°F)
· 插孔 Cavity	10-2 see page K-11
· 流体 Fluids	Mineral-based fluids with viscosities of 7.4 to 420 cSt.

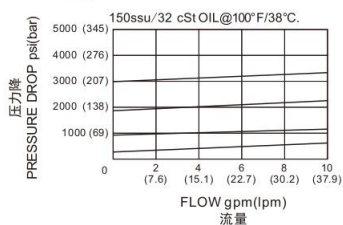
产品特性 Features

- 硬化处理, 零件耐久性强
Hardened, precision ground parts for durability
- 工业通用插孔
Industry common cavity
- 紧凑的结构
Compact size
- 调节杆可被锁定
Adjustment may be locked in place
- 低泄漏设计
Low leakage design
- 迅速响应压力变化
Fast response to pressure surges

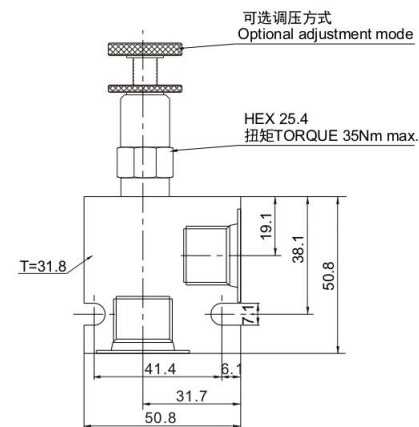
工作 Operation

当①口压力超过弹簧设定压力时, 锥阀芯打开, ①到②开始溢流, 防止系统过压。
The valve prevents flow from ① to ② until the set crack pressure at ① is achieved. The poppet then unseat allowing flow from ① to ② protecting the circuit from over pressurization.

压力-流量性能曲线
Performance Curve Pressure Drop vs. Flow



安装尺寸 INSTALLATION DIMENSIONS



订购型号 Order Type

MADRV2-10 * - * - * - * *

I II III IV V

- | | | |
|---|---|---|
| I. 调节方式 Adjustment
空白=螺钉调整 Screw Adjust
K=手轮调整 Handwheel Adjust
S=隐藏调整 Hidden Adjustment | III. 油封 Seal-Kits
N=丁腈橡胶 Buna N
V=氟橡胶 Viton | V. 阀块油口 BODY PORTING
6T=SAE 6T
8T=SAE 8T
3G=G3/8
6N=NPT3/8
其他螺纹油口是可选择的
Other porting is available |
| II. 调压范围 Pressure Range
6=50-600psi(3.45-41.38bar)
Preset:300psi(20.7bar)
12=150-1200psi(10.34-82.7bar)
Preset:600psi(41.4bar)
23=250-2300psi(17.24-158.62bar)
Preset:1160psi(80bar)
33=250-3300psi(17.24-227.59bar)
Preset:1650psi(113.8bar) | IV. 阀块材质 BODY MATERIAL
A=6061-T6铝
耐压强度207Bar
6061-T6 aluminum
alloy rated at 207Bar
S=钢材 耐压强度350Bar
steel rated at 350Bar | |