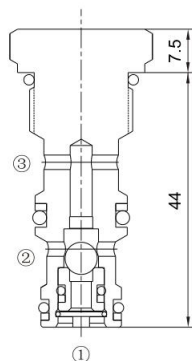
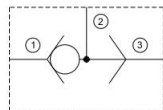


MSLV-06

梭阀
Shuttle Valve



机能符号 Symbol



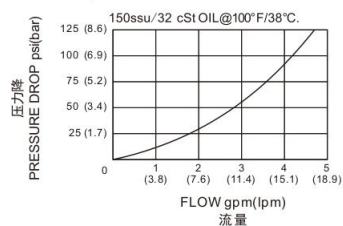
技术参数 Specifications

· 工作压力 Operating Pressure	240BAR
· 流量 Flow	15L/min
· 内泄漏 Internal Leakage	5drops/min.max.at operating pressure
· 温度 Temperature	-30°C to +120°C (-22°F to +250°F)
· 插孔 Cavity	T4-S2 see page K-21
· 流体 Fluids	Mineral-based fluids with viscosities of 7.4 to 420 cSt.

产品特性 Features

- 硬化处理, 零件耐久性强
Hardened, precision ground parts for durability
- 紧凑的结构
Compact size
- 迅速响应负载方向变化
Rapid response to load direction changes.

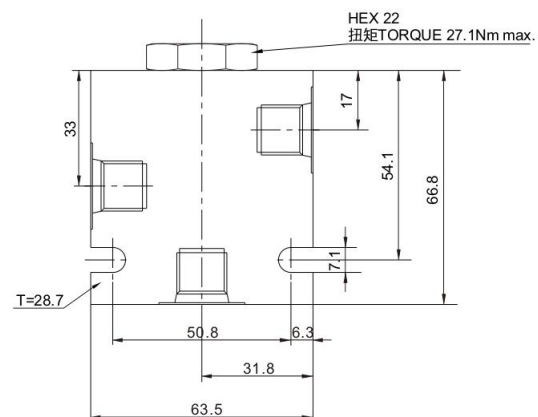
压力-流量性能曲线
Performance Curve Pressure Drop vs. Flow



工作 Operation

当①口压力超过②口或③口压力时, ①到②打开
当③口压力超过①口或②口压力时, ③到②打开
此阀一般被用于将双向液压马达的压力口与液压刹车释放端连接。
The valve will allow flow from the higher pressure of ① or ③ port to the ② port.
The valve is commonly used to direct oil from the pressure side of a bidirectional hydraulic motor to a pressure-released hydraulic brake

安装尺寸 INSTALLATION DIMENSIONS



D

订购型号 Order Type

MSLV-06 - * - * *

| | |

I II III

I. 油封 Seal-Kits
N=丁腈橡胶 Buna N
V=氟橡胶 Viton

II. 阀块材质 BODY MATERIAL
A=6061-T6铝
耐压强度207Bar
6061-T6 aluminum
alloy rated at 207Bar
S=钢材 耐压强度350Bar
steel rated at 350Bar

III. 阀块油口 BODY PORTING
6T=SAE 6T
8T=SAE 8T
3G=G3/8
3N=NPT3/8
其他螺纹油口是可选择的
Other porting is available