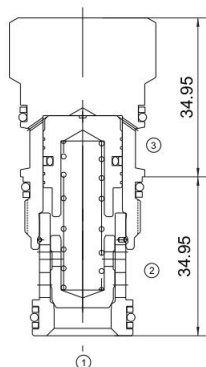


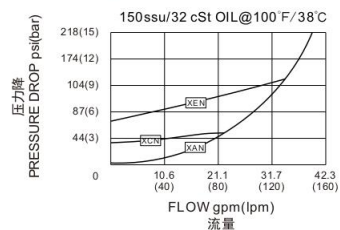


MCOFA

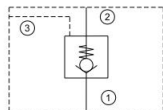
液控单向阀
Pilot Check Valve



压力-流量性能曲线
Performance Curve Pressure
Drop vs. Flow



机能符号 Symbol



技术参数 Specifications

· 工作压力 Operating Pressure	350BAR
· 流量 Flow	160L/min
· 先导比 Pilot Ratio	1.8:1
· 内泄漏 Internal Leakage	0.07ml/min.max.at operating pressure
· 温度 Temperature	-30°C to +120°C (-22°F to +250°F)
· 插孔 Cavity	T-2A see page K-1
· 流体 Fluids	Mineral-based fluids with viscosities of 7.4 to 420 cSt.

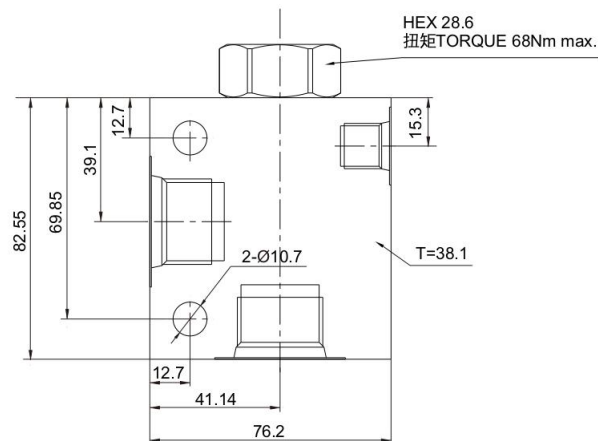
产品特性 Features

- 名义先导比为1.8:1。这意味着先导压力为1000psi(70bar)，可以抵消1800psi(125bar)的1口压力。不管先导压力衰退或者消失，即使是非常短暂，阀亦会打开。
Nominal pilot ratio is 1.8:1. This means that a pressure of 1000 psi (70 bar) at the pilot port will close a valve against a pressure of 1800 psi (125 bar) at port 1. Any decay or loss of pilot pressure could allow the valve to open, even if it is a momentary decay or loss.
- 2口的压力直接反作用于先导压力。
Pressure at the port 2 area directly opposes pilot pressure.
- 在任何情况下，反向流量从2口流向1口都是不可能的。
Reverse flow through the valve from port 2 to port 1 is not possible under any condition.

工作 Operation

此阀为弹簧偏置关闭，先导压力比1.8:1的先导关闭单向阀。此阀可以让油液从口1到口2流动但是阻止反向液流。先导口的压力以1.8:1的比率对抗口1压力。此阀经常应用在再生回路中。
This valve is a spring biased closed, pilot-to-close check cartridge that has a 1.8:1 pilot ratio. The valve allows flow from port 1 to port 2 and blocks reverse flow. Pressure at the pilot port opposes pressure at port 1 at a ratio of 1.8:1. This valve is most often used in regeneration circuits.

安装尺寸 INSTALLATION DIMENSIONS



订购型号 Order Type

MCOFA - * * * - * *

I II III IV V

I. 调节方式 Adjustment
X=不可调整 Nonadjustable

II. 开启压力 Cracking Pressure
A=4psi(0.3bar)
B=15psi(1bar)
C=30psi(2bar)
D=50psi(3.5bar)
E=75psi(5bar)
F=100psi(7bar)
J=1350psi(9.5bar)

III. 油封 Seal-Kits
N=丁腈橡胶 Buna N
V=氟橡胶 Viton

IV. 阀块材质 BODY MATERIAL
A=6061-T6铝
耐压强度207Bar
6061-T6 aluminum
alloy rated at 207Bar
S=钢材 耐压强度350Bar
steel rated at 350Bar

V. 阀块油口 BODY PORTING
6T=SAE 6T
12T=SAE 12T
6G=G3/4
6N=NPT3/4
其他螺纹油口是可选择的
Other porting is available