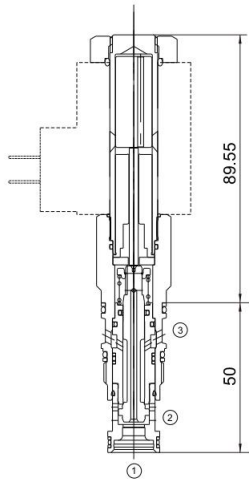


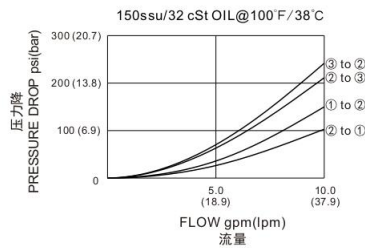


# MDWDF - \* A \*

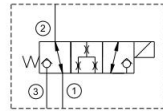
二位三通电磁阀  
3-Way, 2-Position



压力-流量性能曲线  
Performance Curve Pressure Drop vs. Flow



## 机能符号 Symbol



## 技术参数 Specifications

· 工作压力 Operating Pressure	350BAR
· 流量 Flow	30L/min
· 额定响应时间 Response Time - Typical	50ms
· 内泄漏 Internal Leakage	0.7 ml/min.max.at 24cst
· 温度 Temperature	-30°C to +120°C (-22°F to +250°F)
· 插孔 Cavity	T-11A see page K-2
· 流体 Fluids	Mineral-based fluids with viscosities of 7.4 to 420 cSt.

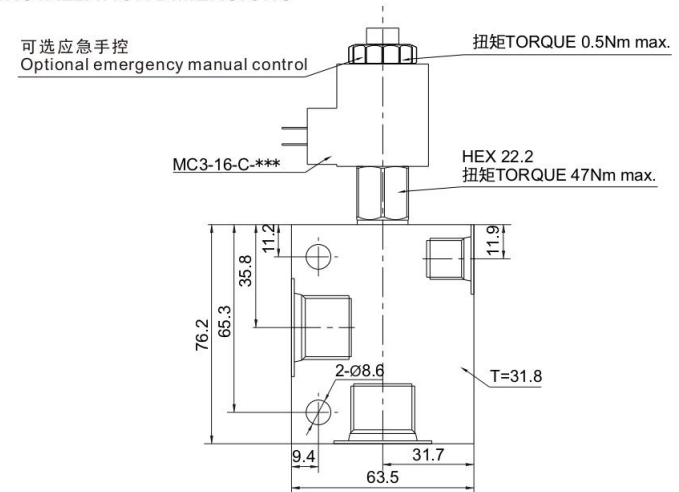
## 产品特性 Features

- 阀表现出极低的泄漏的速率  
Valves exhibit extremely low leakage rates
- 此阀采用湿式衔铁线圈设计  
This valve utilizes a wet armature design
- 此阀可被直接驱动且不需要最小液压操作压力  
This valve is direct actuated and requires no minimum hydraulic pressure for operation
- 此阀适合在口3进行负载锁紧应用。在动力源失效情况下，阀会在弹簧偏置下关闭。  
This valve is suitable for load holding applications on port 3 only. In the event of power failure, the valve would spring closed.

## 工作 Operation

此类2位3通电磁阀为直动式，锥阀结构换向阀。此阀偏置时为口1到口2常开且口3不通。电磁阀得电则口2到口3接通且口1不通。所有流通的油路为双向且不通的油路为双向堵死。由于锥阀结构，此阀泄漏极低。  
This solenoid-operated 3-way, 2-position cartridge is a direct-acting, poppet-style directional valve. The valve is normally open between port 1 and port 2 with port 3 blocked. Energizing the valve connects port 2 to 3 and blocks port 1. All flow paths are bidirectional and blocked paths are blocked in both directions. Due to the poppet style construction, this valve has extremely low leakage.

## 安装尺寸 INSTALLATION DIMENSIONS



## 订购型号 Order Type

MDWDF - \* A \* - \* \* \* - \* \*

I          II          III          IV          V          VI          VII

- |  |  |  |
|--|--|--|
| <p>I. 手控应急 Manual Emergency<br/>X=无手控应急 Not Manual<br/>M=手控应急 Manual Emergency</p> | <p>III. 电压 Voltage<br/>12=12V<br/>24=24V<br/>110V=110V<br/>220V=220V</p> | <p>VI. 阀块材质 BODY MATERIAL<br/>A=6061-T6铝<br/>耐压强度207Bar<br/>6061-T6 aluminum<br/>alloy rated at 207Bar<br/>S=钢材 耐压强度350Bar<br/>steel rated at 350Bar</p> |
| <p>II. 油封 Seal-Kits<br/>N=丁腈橡胶 Buna N<br/>V=氟橡胶 Viton</p>                          | <p>IV. 线圈连接 Coil Connection<br/>H=DIN43650</p>                           | <p>VII. 阀块油口 BODY PORTING<br/>6T=SAE 6T<br/>8T=SAE 8T<br/>3G=G3/8<br/>3N=NPT3/8<br/>其他螺纹油口是可选的<br/>Other porting is available</p>                        |
| <p>V. 电流类型 Current Type<br/>D=直流电 Direct current<br/>A=交流电 Alternating current</p> |  |  |