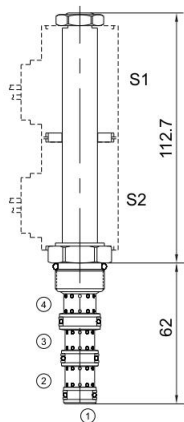


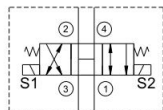


# MSV10-47B

三位四通电磁阀  
4-Way, 3-Position



## 机能符号 Symbol



## 技术参数 Specifications

· 工作压力 Operating Pressure	240BAR
· 流量 Flow	22.7L/min
· 内泄漏 Internal Leakage	328ml/min.max.at operating pressure
· 温度 Temperature	-30°C to +120°C (-22°F to +250°F)
· 插孔 Cavity	10-4 see page K-12
· 流体 Fluids	Mineral-based fluids with viscosities of 7.4 to 420 cSt.

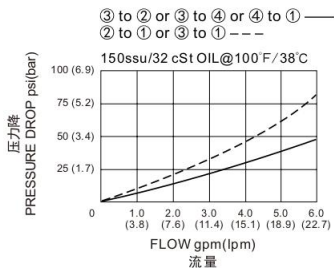
## 产品特性 Features

- 硬化处理 零件耐久性强  
Hardened, precision ground parts for durability
- 工业通用插孔  
Industry common cavity
- 高效能的电磁铁结构  
Efficient wet-armature construction
- 可持续工作的电磁铁  
Continuous-duty solenoid
- 紧凑的结构  
Compact size

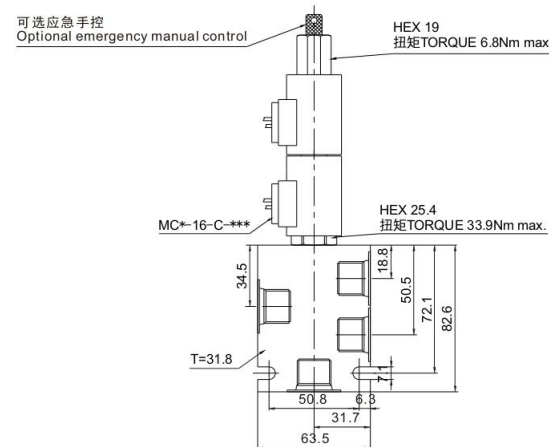
## 工作 Operation

断电时, 油缸油口接通, 允许油液流向所有油口。  
线圈 S1 通电时, 允许油液从 ③ 流向 ④, 以及从 ② 流向 ①。  
线圈 S2 通电时, 油液可以从 ③ 流向 ②, 以及从 ④ 流向 ①。  
When de-energized, the valve has all ports connected.  
When coil S1 is energized, flow is allowed from ③ to ④, and from ② to ①.  
When coil S2 is energized, flow is allowed from ③ to ②, and from ④ to ①

压力-流量性能曲线  
Performance Curve Pressure Drop vs. Flow



## 安装尺寸 INSTALLATION DIMENSIONS



## 订购型号 Order Type

MSV10-47B \* - \* - \* \* \* - \* \*

I      II      III    IV    V      VI    VII

- |   |  |  |
|---|--|--|
| <p>I. 手控应急 Manual Emergency<br/>空白=无手控应急 Not Manual<br/>M=手控应急 Manual Emergency</p> | <p>III. 电压 Voltage<br/>12=12V<br/>24=24V<br/>110V=110V<br/>220V=220V</p>   | <p>VI. 阀块材质 BODY MATERIAL<br/>A=6061-T6铝<br/>耐压强度207Bar<br/>6061-T6 aluminum<br/>alloy rated at 207Bar<br/>S=钢材 耐压强度350Bar<br/>steel rated at 350Bar</p> |
| <p>II. 油封 Seal-Kits<br/>N=丁腈橡胶 Buna N<br/>V=氟橡胶 Viton</p>                           | <p>IV. 线圈连接 Coil Connection<br/>A=安普插头 Amp Plug<br/>B=插片 Double Spade<br/>D=双线引出 Double Lead<br/>S=单线引出 Single Lead<br/>H=DIN43650</p> | <p>VII. 阀块油口 BODY PORTING<br/>6T=SAE 6T<br/>8T=SAE 8T<br/>3G=G3/8<br/>3N=NPT3/8<br/>其他螺纹油口是可选择的<br/>Other porting is available</p>                       |
| <p>V. 电流类型 Current Type<br/>D=直流电 Direct current<br/>A=交流电 Alternating current</p>  |  |  |