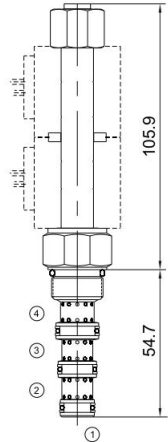


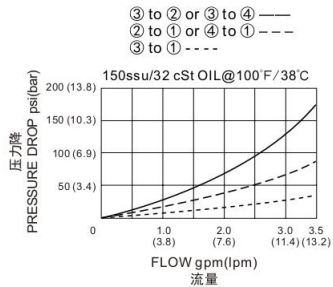


MHF08S-34M

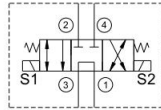
三位四通电磁阀
4-Way, 3-Position



压力-流量性能曲线
Performance Curve Pressure Drop vs. Flow



机能符号 Symbol



技术参数 Specifications

- 工作压力 Operating Pressure 210BAR
- 流量 Flow 11.4L/min
- 内泄漏 Internal Leakage 278ml/min.max.at operating pressure
- 温度 Temperature -30°C to +120°C (-22°F to +250°F)
- 插孔 Cavity 08-4 see page K-10
- 流体 Fluids Mineral-based fluids with viscosities of 7.4 to 420 cSt.

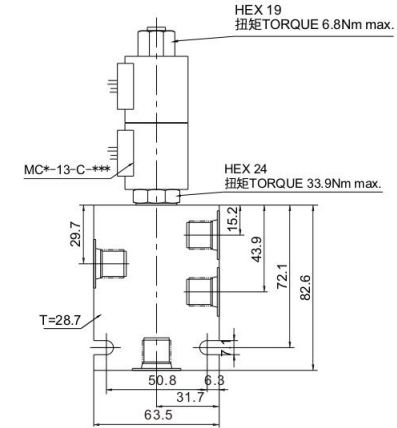
产品特性 Features

- 硬化处理 零件耐久性强
Hardened, precision ground parts for durability
- 工业通用插孔
Industry common cavity
- 高效能的电磁铁结构
Efficient wet-armature construction
- 可持续工作的电磁铁
Continuous-duty solenoid
- 紧凑的结构
Compact size

工作 Operation

断电时, 截止油缸油口, 而允许油液从③流向①。
线圈 S1 通电时, 允许油液从③流向②, 以及从④流向①。
线圈 S2 通电时, 允许油液从③流向④, 以及从②流向①。
When de-energized, the valve blocks cylinder ports, while allowing flow from ③ to ①.
When coil S1 is energized, flow is allowed from ③ to ②, and from ④ to ①.
When coil S2 is energized, flow is allowed from ③ to ④, and from ② to ①.

安装尺寸 INSTALLATION DIMENSIONS



订购型号 Order Type

MHF08S-34M - * - * * * - * *

I II III IV V VI

I. 油封 Seal-Kits
N=丁腈橡胶 Buna N
V=氟橡胶 Viton

III. 电压 Voltage
12=12V
24=24V
110V=110V
220V=220V

IV. 线圈连接 Coil Connection
A=安普插头 Amp Plug
B=插片 Double Spade
D=双线引出 Double Lead
S=单线引出 Single Lead
H=DIN43650

V. 电流类型 Current Type
D=直流电 Direct current
A=交流电 Alternating current

V. 阀块材质 BODY MATERIAL
A=6061-T6铝
耐压强度207Bar
6061-T6 aluminum
alloy rated at 207Bar
S=钢材 耐压强度350Bar
steel rated at 350Bar

VI. 阀块油口 BODY PORTING
4T=SAE 4T
8T=SAE 8T
3G=G3/8
3N=NPT3/8
其他螺纹油口是可选择的
Other porting is available