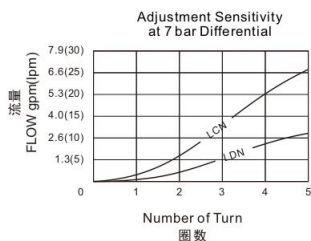
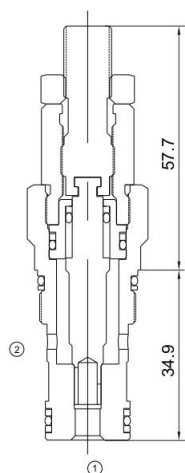


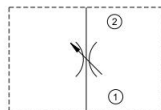


MNFCC

节流阀 Cartridge Needle Valve



机能符号 Symbol



技术参数 Specifications

· 工作压力 Operating Pressure	350BAR
· 流量 Flow	28L/min
· 温度 Temperature	-30°C to +120°C (-22°F to +250°F)
· 插孔 Cavity	T-13A see page K-3
· 流体 Fluids	Mineral-based fluids with viscosities of 7.4 to 420 cSt.

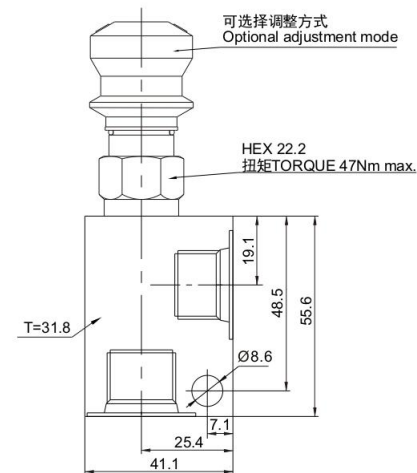
产品特性 Features

- 由于针阀并不具备压力补偿的结构, 固定的小孔将会使流量大小与1口, 2口压差的平方根成比例
Because needle Valve are non-compensating devices, the fixed orifice size will regulate flow through the valve in proportion to the square root of the pressure differential across ports 1 and 2.
- 平衡的调节结构可以保证在高压情况下, 亦可轻松调节
A balanced adjustment mechanism allows for easy adjustment even at high pressures
- 锐边小孔的设计可以最大化地减小粘度对于流量变化的影响
The sharp-edged orifice design minimizes flow variations due to viscosity changes

工作 Operation

针阀为全调型节流口以用来调节流量。它们可在全闭与最大节流口直径之间无限调节。此类阀无压力补偿。它们可以用来做流量控制或者截止阀。Needle Valve are fully adjustable orifices used to regulate flow. They are infinitely adjustable from fully closed up to the maximum orifice diameter. They are not pressure compensated and may be used as flow controls or as shutoff Valves.

安装尺寸 INSTALLATION DIMENSIONS



订购型号 Order Type

MNFCC - * * * - * *

I II III IV V

I. 调节方式 Adjustment
L=螺钉调整 Screw Adjust
H=刻度旋钮, 带止动锁
Calibrated Handknob
with Detent Lock

II. 最大节流孔直径
MAXIMUM ORIFICE DIAMETER
C=0.19in.(4.8mm)
D=0.09in.(2.3mm)
I=0.06in.(1.5mm)

III. 油封 Seal-Kits
N=丁腈橡胶 Buna N
V=氟橡胶 Viton

IV. 阀块材质 BODY MATERIAL
A=6061-T6铝
耐压强度207Bar
6061-T6 aluminum
alloy rated at 207Bar
S=钢材 耐压强度350Bar
steel rated at 350Bar

V. 阀块油口 BODY PORTING
6T=SAE 6T
8T=SAE 8T
3G=G3/8
3N=NPT3/8
其他螺纹油口是可选择的
Other porting is available