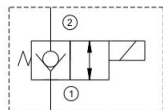


# MSV2-10-2NCRP

二位二通电磁阀(常闭型)  
2-Way, 2-Position  
(Normally Closed)

## 机能符号 Symbol



## 技术参数 Specifications

· 工作压力 Operating Pressure	207BAR
· 流量 Flow	56.8L/min
· 内泄漏 Internal Leakage	3drop/min.max.at operating pressure
· 温度 Temperature	-30°C to +120°C (-22°F to +250°F)
· 插孔 Cavity	10-2 see page K-11
· 流体 Fluids	Mineral-based fluids with viscosities of 7.4 to 420 cSt.

## 产品特性 Features

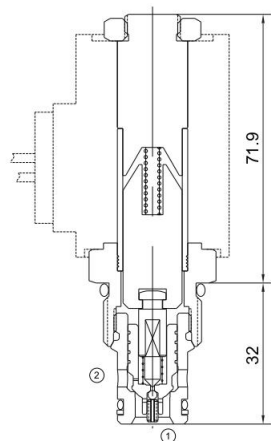
- 硬化处理 零件耐久性强  
Hardened, precision ground parts for durability
- 工业通用插孔  
Industry common cavity
- 高效能的电磁铁结构  
Efficient wet-armature construction
- 可持续工作的电磁铁  
Continuous-duty solenoid
- 紧凑的结构  
Compact size

## 工作 Operation

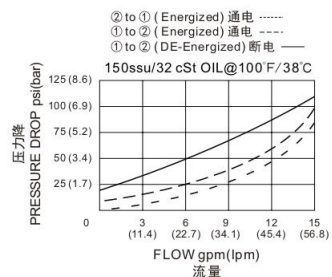
失电时, ①到②相当于单向阀, ②到①关闭;  
得电时, ②到①, ①到②互通。

When de-energized, the valve acts as a check valve, allowing flow from ① to ②, while blocking flow from ② to ①.

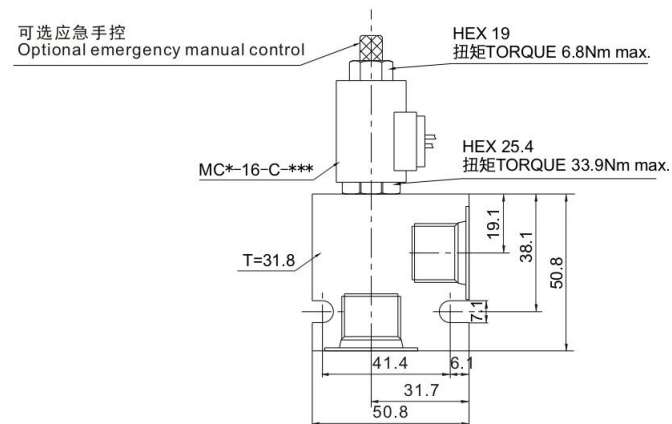
When energized, the poppet lifts to open the ② to ① flow path. In this mode, flow is also allowed from ① to ②



压力-流量性能曲线  
Performance Curve Pressure Drop vs. Flow



## 安装尺寸 INSTALLATION DIMENSIONS



## 订购型号 Order Type

MSV2-10-2NCRP - \* - \* - \* \* \* - \* \*

I            II            III    IV    V            VI    VII

- |   |  |  |
|---|--|--|
| <p>I. 手控应急 Manual Emergency<br/>空白=无手控应急 Not Manual<br/>M=手控应急 Manual Emergency</p> | <p>III. 电压 Voltage<br/>12=12V<br/>24=24V<br/>110V=110V<br/>220V=220V</p>   | <p>VI. 阀块材质 BODY MATERIAL<br/>A=6061-T6铝<br/>耐压强度207Bar<br/>6061-T6 aluminum<br/>alloy rated at 207Bar<br/>S=钢材 耐压强度350Bar<br/>steel rated at 350Bar</p> |
| <p>II. 油封 Seal-Kits<br/>N=丁腈橡胶 Buna N<br/>V=氟橡胶 Viton</p>                           | <p>IV. 线圈连接 Coil Connection<br/>A=安普插头 Amp Plug<br/>B=插片 Double Spade<br/>D=双线引出 Double Lead<br/>S=单线引出 Single Lead<br/>H=DIN43650</p> | <p>VII. 阀块油口 BODY PORTING<br/>6T=SAE 6T<br/>8T=SAE 8T<br/>3G=G3/8<br/>3N=NPT3/8<br/>其他螺纹油口是可选择的<br/>Other porting is available</p>                       |
| <p>V. 电流类型 Current Type<br/>D=直流电 Direct current<br/>A=交流电 Alternating current</p>  |  |  |