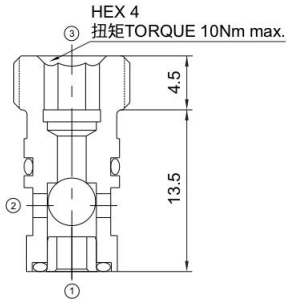
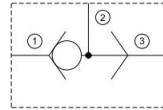


MSLV2-G18

机能符号 Symbol

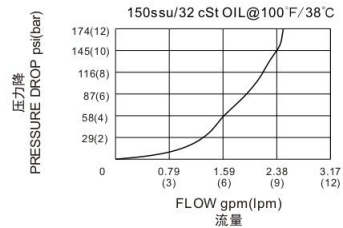
梭阀
Shuttle Valve



技术参数 Specifications

· 工作压力 Operating Pressure	350BAR
· 流量 Flow	10L/min
· 内泄漏 Internal Leakage	5drops/min.max.at operating pressure
· 温度 Temperature	-30°C to +120°C (-22°F to +250°F)
· 插孔 Cavity	见图
· 流体 Fluids	Mineral-based fluids with viscosities of 7.4 to 420 cSt.

压力-流量性能曲线
Performance Curve Pressure Drop vs.Flow



产品特性 Features

- 硬化处理,零件耐久性强
Hardened, precision ground parts for durability
- 紧凑的结构
Compact size
- 迅速响应负载方向变化
Rapid response to load direction changes.

工作 Operation

当①口压力超过②口或③口压力时,①到②打开
当③口压力超过①口或②口压力时,③到②打开
此阀一般被用于将双向液压马达的压力口与液压刹车释放端连接。
The valve will allow flow from the higher pressure of ① or ③ port to the ② port.
The valve is commonly used to direct oil from the pressure side of a bidirectional hydraulic motor to a pressure-released hydraulic brake

