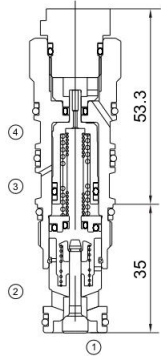


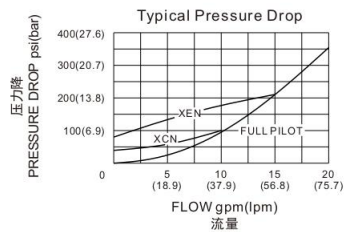
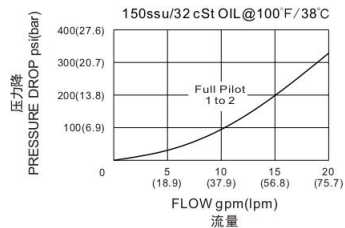


MVCVCV

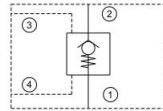
液控单向阀
Pilot Check Valve



压力-流量性能曲线
Performance Curve Pressure Drop vs. Flow



机能符号 Symbol



技术参数 Specifications

| | |
|---------------------------|--|
| · 工作压力 Operating Pressure | 350BAR |
| · 流量 Flow | 60L/min |
| · 先导比 Pilot Ratio | 3:1 |
| · 内泄漏 Internal Leakage | 0.07ml/min.max.at operating pressure |
| · 温度 Temperature | -30°C to +120°C (-22°F to +250°F) |
| · 插孔 Cavity | T-21A see page K-6 |
| · 流体 Fluids | Mineral-based fluids with viscosities of 7.4 to 420 cSt. |

产品特性 Features

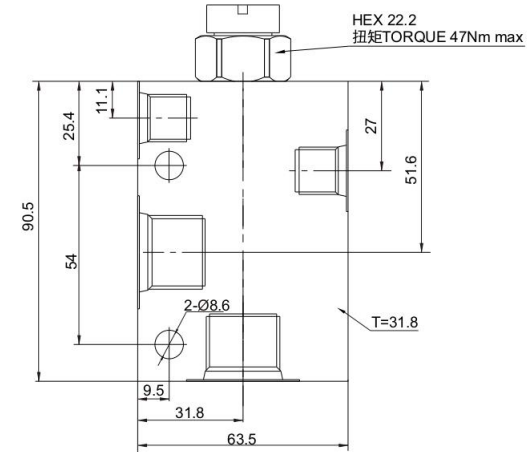
- 先导压力只要比泄油压力大75psi(5bar), 就可以将阀芯打开。
Pilot pressure as low as 75 psi (5 bar) higher than the pressure at the vent can open the valve.
- 4口(泄油口)最大承受的压力不超过5000psi(350bar)
Will accept pressure at port 4 (vent) but can not exceed 5000 psi (350 bar).
- 先导开启的单向阀是锁阀, 并不是动作控制阀。如需要动作控制, 请使用平衡阀。
Pilot-to-open check cartridges are locking valve, not motion control valve. For motion control applications, use counterbalance valve.

工作 Operation

此阀为先导液控单向阀。它具有密封导压, 钢质阀座并且带外接口。它允许液流从阀口(口2)向负载口(口1)自由流动, 截止其反向液流。先导口(口3)的压力使阀开启从口1到口2的流道。口3需要的开启先导压力与口1的负载压力直接成正比。因弹簧腔接外接口(口4), 所以阀不受口2压力影响。

This valve is a pilot to open check valve. It has a sealed pilot, a steel seat, and is vented. It allows free flow from the valve (port 2) to the load (port 1) and blocks flow in the opposite direction. Pressure at the pilot (port 3) will open the valve from port 1 to port 2. Pilot pressure needed to open the valve is directly proportional to the load pressure at port 1. The valve is insensitive to pressure at port 2 because the spring chamber is referenced to the vent (port 4).

安装尺寸 INSTALLATION DIMENSIONS



D

订购型号 Order Type

MVCVCV - * * * - * *

I II III IV V

- | | | |
|--|---|--|
| <p>I. 调节方式 Adjustment X=不可调整 Nonadjustable</p> <p>II. 开启压力 Cracking Pressure A=4psi(0.3bar) B=15psi(1bar) C=30psi(2bar) D=50psi(3.5bar) E=75psi(5bar) F=100psi(7bar)</p> | <p>III. 油封 Seal-Kits N=丁腈橡胶 Buna N V=氟橡胶 Viton</p> <p>IV. 阀块材质 BODY MATERIAL A=6061-T6铝 耐压强度207Bar 6061-T6 aluminum alloy rated at 207Bar S=钢材 耐压强度350Bar steel rated at 350Bar</p> | <p>V. 阀块油口 BODY PORTING 6T=SAE 6T 10T=SAE 10T 3G=G3/8 3N=NPT3/8 其他螺纹油口是可选择的 Other porting is available</p> |
|--|---|--|