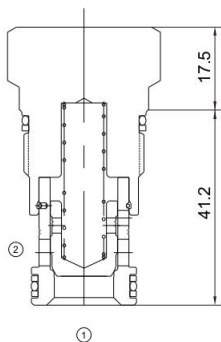


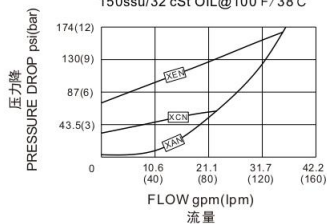


MCXFA

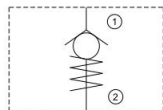
单向阀
Check Valve



压力-流量性能曲线
Performance Curve Pressure Drop vs. Flow
150ssu/32 cSt OIL@100°F/38°C



机能符号 Symbol



技术参数 Specifications

· 工作压力 Operating Pressure	350BAR
· 流量 Flow	160L/min
· 内泄漏 Internal Leakage	0.07ml/min.max.at operating pressure
· 温度 Temperature	-30°C to +120°C (-22°F to +250°F)
· 插孔 Cavity	T-5A see page K-36
· 流体 Fluids	Mineral-based fluids with viscosities of 7.4 to 420 cSt.

产品特性 Features

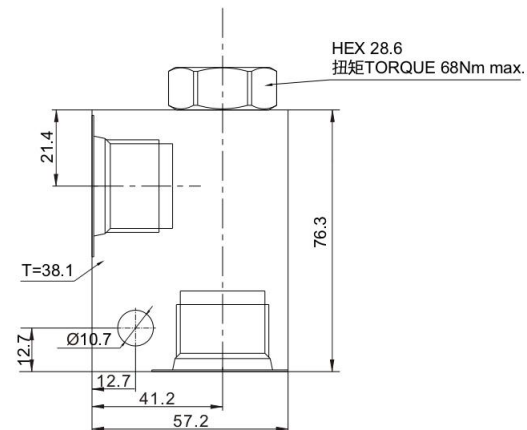
- 硬化处理 零件耐久性强
Hardened, precision ground parts for durability
- 工业通用插孔
Industry common cavity
- 紧凑的结构
Compact size
- 单向阀具备非常低的泄漏等级，其中最大泄漏量每分钟少于1滴 (0.07cc/min)

Check valves offer extremely low leakage rates with a maximum leakage of less than 1 drop per minute (0,07 cc/min).
· 1口和2口均可承受5000psi (350bar) 的压力
Will accept 5000 psi (350 bar) at ports 1 and 2

工作 Operation

自由流，鼻端孔到侧孔单向阀为开/关液路元件，它允许液流从进口 (口1) 向出口 (口2) 自由流动，截止其反向液流。
Free-flow, nose-to-side check Valve are on/off circuit components that allow free flow from the inlet (port 1) to the outlet (port 2) and block flow in the opposite direction.

安装尺寸 INSTALLATION DIMENSIONS



订购型号 Order Type

MCXFA - * - * - * *

I II III IV

- | | | |
|---|---|---|
| <p>I. 调节方式 Adjustment
X=不可调整 Nonadjustable</p> <p>II. 开启压力 Cracking Pressure
A =4psi(0.3bar)
B =15psi(1bar)
C =30psi(2bar)
D =50psi(3.5bar)
E =75psi(5bar)
F =100psi(7bar)
Z =1psi(0.07bar)</p> | <p>III. 油封 Seal-Kits
N=丁腈橡胶 Buna N
V=氟橡胶 Viton</p> <p>IV. 阀块材质 BODY MATERIAL
A=6061-T6铝
 耐压强度207Bar
6061-T6 aluminum alloy rated at 207Bar
S=钢材 耐压强度350Bar
 steel rated at 350Bar</p> | <p>V. 阀块油口 BODY PORTING
6T=SAE 6T
12T=SAE 12T
2G=G1/4
2N=NPT 1/4
其他螺纹油口是可选择的
Other porting is available</p> |
|---|---|---|