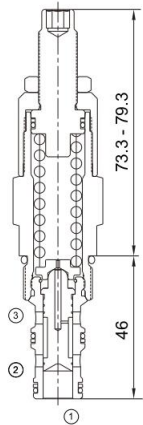
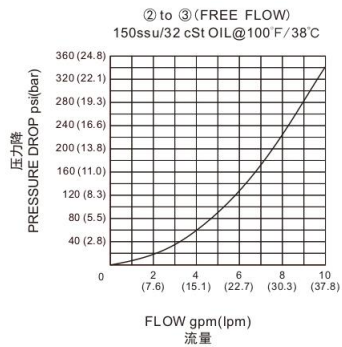


MPS-10

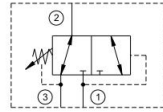
方向阀
Directional Valve



压力-流量性能曲线
Performance Curve Pressure
Drop vs. Flow



机能符号 Symbol



技术参数 Specifications

- 工作压力 Operating Pressure 207BAR
- 流量 Flow 34L/min
- 内泄漏 Internal Leakage 82ml/min.max.at operating pressure
- 温度 Temperature -30°C to +120°C (-22°F to +250°F)
- 插孔 Cavity 10-3 see page K-11
- 流体 Fluids Mineral-based fluids with viscosities of 7.4 to 420 cSt.

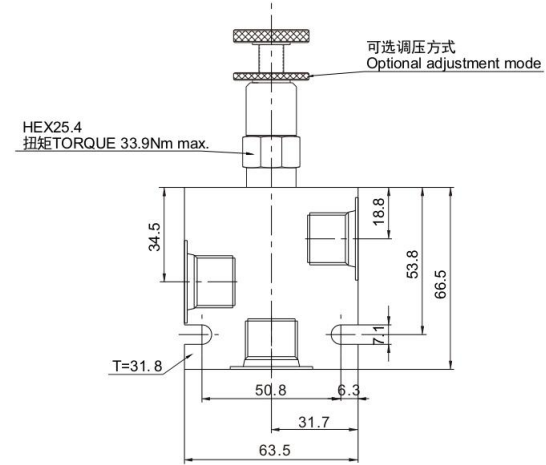
产品特性 Features

- 硬化处理,零件耐久性强
Hardened, precision ground parts for durability
- 工业通用插孔
Industry common cavity
- 紧凑的结构
Compact size
- 调压杆可被锁定
Adjustment may be locked in place.
- 调节装置不会旋出阀体
Adjustment will not screw out of the valve body

工作 Operation

在稳定状态, ①与②不通, ②到③通;
在①口达到预设定的压力时, ①与②打开。
In its steady state, the valve blocks flow at ①, while allowing flow to pass from ② to ③. On attainment of a pre-determined pressure at ①, the cartridge shifts to open ① to ②.

安装尺寸 INSTALLATION DIMENSIONS



订购型号 Order Type

MPS-10 * - * - * - * *

I II III IV V

- | | | |
|---|---|--|
| <p>I. 调节方式 Adjustment
空白=螺钉调整 Screw Adjust
K=手轮调整 Handwheel Adjust</p> <p>II. 调压范围 Pressure Range
4=40-400psi(2.8-28bar)
Preset:200psi(13bar)
8=200-800psi(14-56bar)
Preset:400psi(28bar)
15=300-1500psi(21-104bar)
Preset:750psi(52bar)
21=210-2100psi(14.5-145bar)
Preset:740psi(51bar)</p> | <p>III. 油封 Seal-Kits
N=丁腈橡胶 Buna N
V=氟橡胶 Viton</p> <p>IV. 阀块材质 BODY MATERIAL
A=6061-T6铝
耐压强度207Bar
6061-T6 aluminum alloy rated at 207Bar
S=钢材 耐压强度350Bar
steel rated at 350Bar</p> | <p>V. 阀块油口 BODY PORTING
6T=SAE 6T
8T=SAE 8T
3G=G3/8
3N=NPT3/8
其他螺纹油口是可选择的
Other porting is available</p> |
|---|---|--|