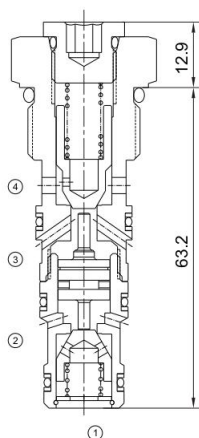
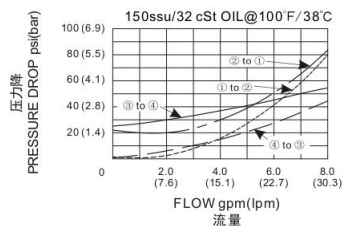


# MDPC-10

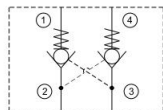
双向液压锁  
Dual Pilot-operated Check Valve



压力-流量性能曲线  
Performance Curve Pressure Drop vs. Flow



## 机能符号 Symbol



## 技术参数 Specifications

· 工作压力 Operating Pressure	240BAR
· 流量 Flow	30L/min
· 控制比 Pilot Ratio	4:1
· 内泄漏 Internal Leakage	2drop/min.max.at operating pressure
· 温度 Temperature	-30°C to +120°C (-22°F to +250°F)
· 插孔 Cavity	10-4 see page K-12
· 流体 Fluids	Mineral-based fluids with viscosities of 7.4 to 420 cSt.

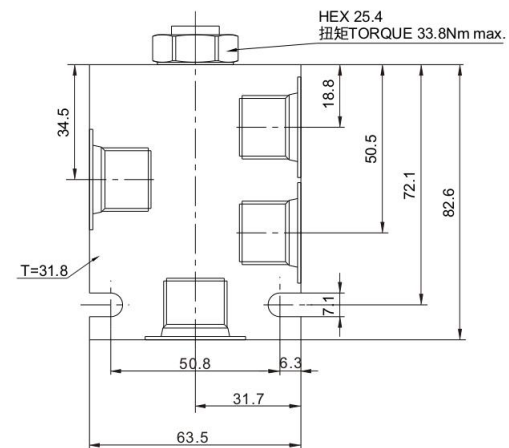
## 产品特性 Features

- 硬化处理 零件耐久性强  
Hardened, precision ground parts for durability
- 工业通用插孔  
Industry common cavity
- 紧凑的结构  
Compact size
- 压力损失低  
Low pressure loss

## 工作 Operation

①到②, ④到③关闭; 在反方向, ②到①, ③到④打开。  
此阀有3:1的控制比, 所以在②口或③口的压力超过④口或者①口的负载压力的1/3时, ④到③, ①到②打开。  
The valve will block flow from ① to ②, and from ④ to ③.  
Flow is allowed in the opposite direction when pressure is applied to port ② and/or ③ port. The valve has a 3:1 pilot ratio, so at least 1/3 of the load pressure at port ① or ④ is required at the pilot line (port ② or ③) to open the flow passage to allow flow from ports ① to ④.

## 安装尺寸 INSTALLATION DIMENSIONS



D

## 订购型号 Order Type

MDPC-10 - \* - \* - \* \*

I            II            III    IV

- |  |  |  |
|--|--|--|
| I. 开启压力 Opening Pressure<br>1.7=25psi(1.7bar)    | III. 阀块材质 BODY MATERIAL<br>A=6061-T6铝<br>耐压强度207Bar<br>6061-T6 aluminum<br>alloy rated at 207Bar<br>S=钢材 耐压强度350Bar<br>steel rated at 350Bar | IV. 阀块油口 BODY PORTING<br>6T=SAE 6T<br>8T=SAE 8T<br>3G=G3/8<br>3N=NPT3/8<br>其他螺纹油口是可选择的<br>Other porting is available |
| II. 油封 Seal-Kits<br>N=丁腈橡胶 Buna N<br>V=氟橡胶 Viton |  |  |