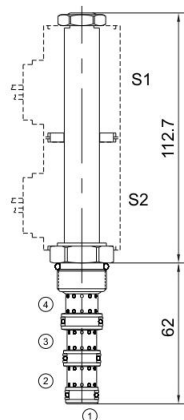


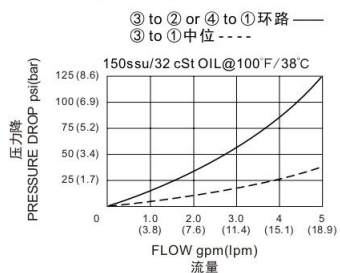


MSV10-47A

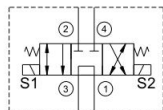
三位四通电磁阀
4-Way, 3-Position



压力-流量性能曲线
Performance Curve Pressure Drop vs. Flow



机能符号 Symbol



技术参数 Specifications

· 工作压力 Operating Pressure	240BAR
· 流量 Flow	19L/min
· 内泄漏 Internal Leakage	300ml/min.max.at operating pressure
· 温度 Temperature	-30°C to +120°C (-22°F to +250°F)
· 插孔 Cavity	10-4 see page K-12
· 流体 Fluids	Mineral-based fluids with viscosities of 7.4 to 420 cSt.

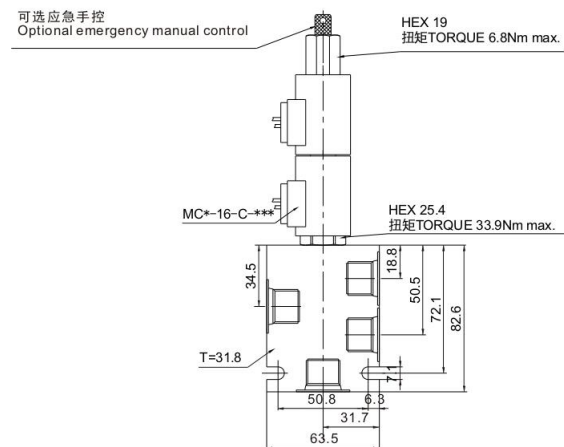
产品特性 Features

- 硬化处理 零件耐久性强
Hardened, precision ground parts for durability
- 工业通用插孔
Industry common cavity
- 高效能的电磁铁结构
Efficient wet-armature construction
- 可持续工作的电磁铁
Continuous-duty solenoid
- 紧凑的结构
Compact size

工作 Operation

断电时, 截止油缸油口, 而允许油液从③流向①。
线圈 S1 通电时, 允许油液从③流向②, 以及从④流向①。
线圈 S2 通电时, 允许油液从③流向④, 以及从②流向①。
When de-energized, the valve blocks cylinder ports, while allowing flow from ③ to ①.
When coil S1 is energized, flow is allowed from ③ to ②, and from ④ to ①.
When coil S2 is energized, flow is allowed from ③ to ④, and from ② to ①.

安装尺寸 INSTALLATION DIMENSIONS



订购型号 Order Type

MSV10-47A * - * - * * * - * *

I II III IV V VI VII

- | | | |
|---|--|---|
| <p>I. 手控应急 Manual Emergency
空白=无手控应急 Not Manual
M=手控应急 Manual Emergency</p> <p>II. 油封 Seal-Kits
N=丁腈橡胶 Buna N
V=氟橡胶 Viton</p> | <p>III. 电压 Voltage
12=12V
24=24V
110V=110V
220V=220V</p> <p>IV. 线圈连接 Coil Connection
A=安普插头 Amp Plug
B=插片 Double Spade
D=双线引出 Double Lead
S=单线引出 Single Lead
H=DIN43650</p> <p>V. 电流类型 Current Type
D=直流电 Direct current
A=交流电 Alternating current</p> | <p>VI. 阀块材质 BODY MATERIAL
A=6061-T6铝
耐压强度207Bar
6061-T6 aluminum
alloy rated at 207Bar
S=钢材 耐压强度350Bar
steel rated at 350Bar</p> <p>VII. 阀块油口 BODY PORTING
6T=SAE 6T
8T=SAE 8T
3G=G3/8
3N=NPT3/8
其他螺纹油口是可选择的
Other porting is available</p> |
|---|--|---|

