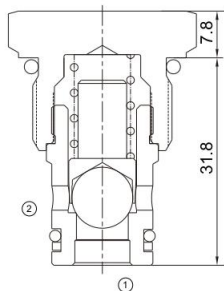


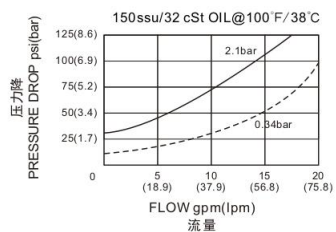


# MCV-10-20

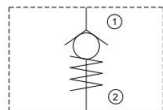
单向阀  
Check Valve



压力-流量性能曲线  
Performance Curve Pressure Drop vs. Flow



## 机能符号 Symbol



## 技术参数 Specifications

· 工作压力 Operating Pressure	240BAR
· 流量 Flow	76L/min
· 内泄漏 Internal Leakage	5drop/min.max.at operating pressure
· 温度 Temperature	-30°C to +120°C (-22°F to +250°F)
· 插孔 Cavity	10-2 see page K-11
· 流体 Fluids	Mineral-based fluids with viscosities of 7.4 to 420 cSt.

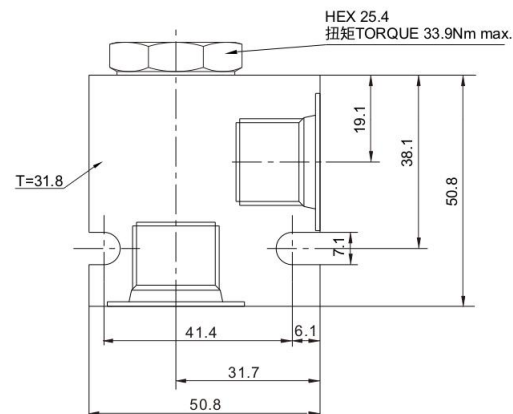
## 产品特性 Features

- 硬化处理, 零件耐久性强  
Hardened, precision ground parts for durability
- 工业通用插孔  
Industry common cavity
- 紧凑的结构  
Compact size
- 低泄漏设计  
Low leakage design

## 工作 Operation

当在①口的压力超过开启压力, ①到②开启; 在反方向, ②到①关闭;  
Pressure at ① overcomes the spring-bias poppet and allows free flow ① to ②. Flow in the opposite direction, from ② to ①, is blocked by the poppet.

## 安装尺寸 INSTALLATION DIMENSIONS



D

## 订购型号 Order Type

MCV-10-20 - \* - \* - \* \*

I            II            III    IV

- |   |  |  |
|---|--|--|
| <p>I. 开启压力 Cracking Pressure</p> <p>0.34=5psi(0.34bar)<br/>1.0=15psi(1.0bar)<br/>2.1=30psi(2.1bar)<br/>4.8=70psi(4.8bar)<br/>6.9=100psi(6.9bar)</p> | <p>III. 阀块材质 BODY MATERIAL</p> <p>A=6061-T6铝<br/>  耐压强度207Bar<br/>6061-T6 aluminum<br/>  alloy rated at 207Bar<br/>S=钢材 耐压强度350Bar<br/>  steel rated at 350Bar</p> | <p>IV. 阀块油口 BODY PORTING</p> <p>6T=SAE 6T<br/>8T=SAE 8T<br/>3G=G3/8<br/>3N=NPT3/8<br/>其他螺纹油口是可选择的<br/>Other porting is available</p> |
| <p>II. 油封 Seal-Kits</p> <p>N=丁腈橡胶 Buna N<br/>V=氟橡胶 Viton</p>  |  |  |