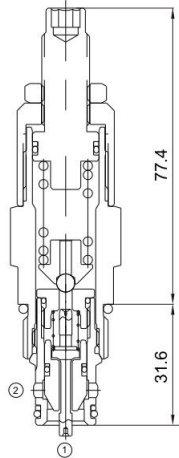


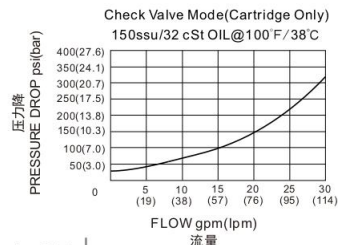
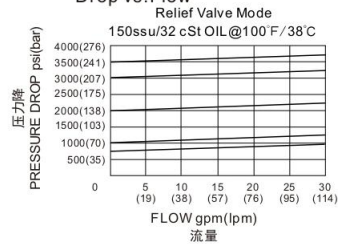


# MRV10-28

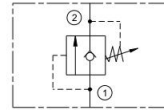
先导式溢流阀(反向单向型)  
Pilot-operated Relief Valve  
(Reverse one-way type)



压力-流量性能曲线  
Performance Curve Pressure Drop vs. Flow



## 机能符号 Symbol



## 技术参数 Specifications

· 工作压力 Operating Pressure	240BAR
· 流量 Flow	7.6-113.6L/min
· 内泄漏 Internal Leakage	0.5ml/min.max.to 80% of nominal setting
· 温度 Temperature	-30°C to +120°C (-22°F to +250°F)
· 插孔 Cavity	10-2 see page K-11
· 流体 Fluids	Mineral-based fluids with viscosities of 7.4 to 420 cSt.

## 产品特性 Features

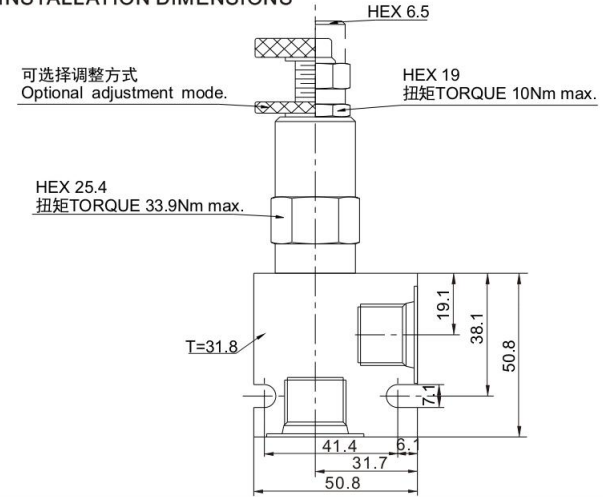
- 迅速响应压力变化  
Fast response to pressure surges
- 长寿命的阀  
Hardened poppet and seat for long life
- 调压杆可被锁定住  
Adjustment may be locked in place
- 工业通用插孔  
Industry common cavity
- 紧凑的结构  
Compact size
- 调节时, 弹簧不会被压并  
Adjustment prevents spring from going solid

## 工作 Operation

MRV10-28型, 常态下从 ① 流向 ② 封闭, 直到 ① 处受到足够的液压力使先导阀开启, 再推动主阀芯移动, 使油液从 ① 流向 ②。溢流时油液从 ① 流向 ②。当作用于 ② 的压力比 ① 处高出 2.1 bar (30 psi) 以上时, 反向导通, 油液从 ② 流向 ①。

The MRV10-28X is a screw-in, cartridge style, pilot operated, relief valve with reverse free flow check valve, intended for use as a pressure limiting device in demanding hydraulic circuits which require fast response, low hysteresis, low leakage, low pressure override and reverse free flow features. The MRV10-28X blocks flow from port 1 to port 2 until sufficient pressure is present at port 1. Relief flow path from port 1 to port 2. Reverse flow from port 2 to port 1 occurs when pressure at port 2 is higher than pressure at port 1.

## 安装尺寸 INSTALLATION DIMENSIONS



## 订购型号 Order Type

MRV10-28 \* - \* / \* - \* - \* \*

I      II      III      IV      V      VI

- |  |   |  |
|--|---|--|
| <p>I. 调节方式 Adjustment<br/>空白=螺钉调整 Screw Adjust<br/>K=手轮调整 Handwheel Adjust<br/>S=隐藏调整 Hidden Adjustment</p>          | <p>IV. 油封 Seal-Kits<br/>N=丁腈橡胶 Buna N<br/>V=氟橡胶 Viton</p>   | <p>VI. 阀块油口 BODY PORTING<br/>6T=SAE 6T<br/>8T=SAE 8T<br/>4N=NPT 1/2<br/>4G=G1/2<br/>其他螺纹油口是可选择的<br/>Other porting is available</p> |
| <p>II. 调压范围 Pressure Range<br/>35=750-3500psi(51.7-240bar)<br/>Preset:1700psi(120bar)<br/>(check:2.1bar)</p>         | <p>V. 阀块材质 BODY MATERIAL<br/>A=6061-T6铝<br/>耐压强度207Bar<br/>6061-T6 aluminum alloy rated at 207Bar<br/>S=钢材 耐压强度350Bar<br/>steel rated at 350Bar</p> |  |
| <p>III. 设定压力 Setting In Bar<br/>空白Blank=预设定 Preset<br/>例如 For Example:<br/>52=52bar(MIN)<br/>100=100bar<br/>etc.</p> |   |  |