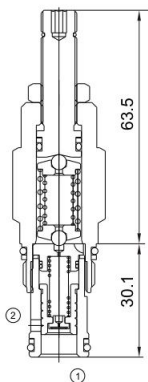




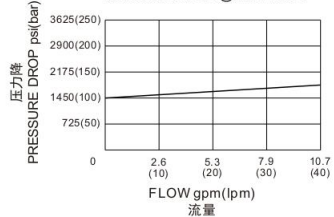
MRV07-20

先导式溢流阀
Pilot-operated Relief Valve

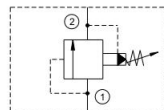


压力-流量性能曲线
Performance Curve Pressure Drop vs. Flow

150ssu/32 cSt OIL@100°F/38°C



机能符号 Symbol



技术参数 Specifications

· 工作压力 Operating Pressure	350BAR
· 流量 Flow	110L/min
· 调压范围 Pressure Range	3bar-220bar, Preset:100bar
· 内泄漏 Internal Leakage	82ml/min, max. to 80% of normal setting
· 温度 Temperature	-30°C to +120°C (-22°F to +250°F)
· 插孔 Cavity	RV07-20 see page K-27
· 流体 Fluids	Mineral-based fluids with viscosities of 7.4 to 420 cSt.

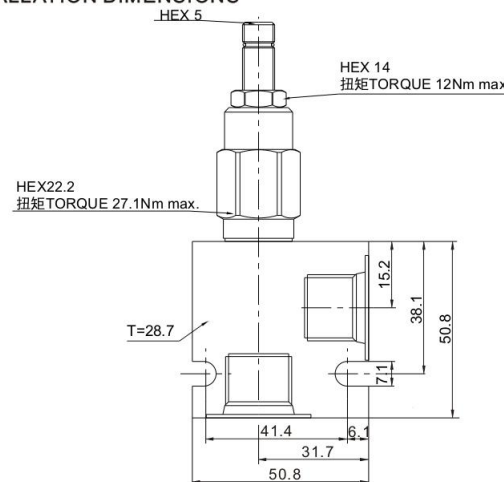
产品特性 Features

- 迅速响应压力变化
Fast response to pressure surges
- 长寿命的阀
Hardened poppet and seat for long life
- 调压杆可被锁定住
Adjustment may be locked in place
- 工业通用插孔
Industry common cavity
- 紧凑的结构
Compact size
- 调节时, 弹簧不会被压并
Adjustment prevents spring from going solid

工作 Operation

先导控制式, 平衡滑阀结构溢流阀为常闭压力调节阀。当进口 (口1) 压力达到阀设定值, 阀开始向油箱 (口2) 溢流, 节流以调节压力。此类阀压力调节精度高, 压力波动随流量变化小, 并且调节平稳, 噪声小, 响应速度适中
Pilot-operated, balanced-piston relief cartridges are normally closed pressure regulating Valve. When the pressure at the inlet (port 1) reaches the valve setting, the valve starts to open to tank (port 2), throttling flow to regulate the pressure. These Valves are accurate, have low pressure rise vs. flow, they are smooth and quiet, and are moderately fast.

安装尺寸 INSTALLATION DIMENSIONS



订购型号 Order Type

MRV07-20 - * - * *

I II III

I. 油封 Seal-Kits
N=丁腈橡胶 Buna N
V=氟橡胶 Viton

II. 阀块材质 BODY MATERIAL
A=6061-T6铝
耐压强度207Bar
6061-T6 aluminum
alloy rated at 207Bar
S=钢材 耐压强度350Bar
steel rated at 350Bar

III. 阀块油口 BODY PORTING
4T=SAE 6T
8T=SAE 8T
3G=G1/2
3N=NPT 1/2
其他螺纹油口是可选择的
Other porting is available