



# JIANGSU JIANGHAO GENERATOR SETS CO., LTD

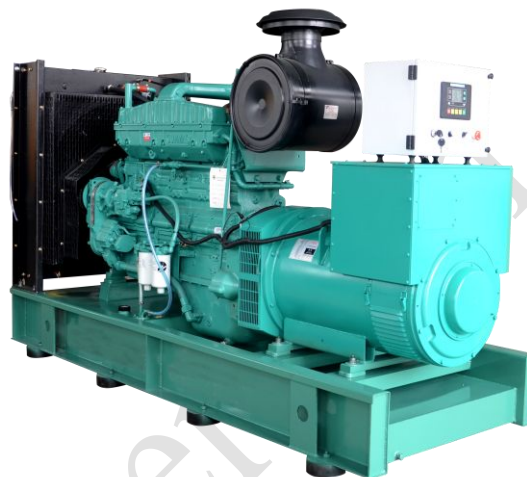
Diesel Generator Sets

<b>Type</b>	JHK-500GF
<b>Frequency (50HZ)</b>	500kw/625KVA

## Standard configuration

Overall description:

- Engine
- Meet the environmental temperature 40 °C water tank radiator, Driving belt cooling fans, with fan safety shield
- 24 V charging generators
- Generator: Single bearing generator, IP23 Grading Protection, H Insulation degree
- Shock absorber
- Dry air filter、 Fuel filter、 Oil filter
- Power output circuit breaker
- Standard control panel
- 12 V battery and battery connection cables
- Exhaust pipe, Bellows, Flange, Muffler set
- Documents and Manuals



## Unit parameters

Power:	500kw/625KVA
Rated voltage:	400V/230V
Rated current:	900A
Rated frequency:	50 HZ
The factor of rated power:	0.8
The regulating rate of instantaneous voltage:	$\leq \pm 15\%$
The regulating rate of steady voltage:	$\leq \pm 0.5\%$
The waving rate of voltage:	$\leq 0.5\%$
Voltage waveform distortion degree:	$\leq 5\%$
The time of steady voltage:	$\leq 1.5\text{sec}$
The regulating rate of steady frequency:	$\leq \pm 2\%$
The regulating rate of instantaneous frequency:	$\leq \pm 5\%$
The time of steady frequency:	$\leq 3\text{sec}$
The waving rate of frequency:	$\leq \pm 0.5\%$
The waste of fuel with full load:	206g/kw.h
Size (mm) :	3500*1500*2000
Weight(kg):	4200



## JIANGSU JIANGHAO GENERATOR SETS CO., LTD

Diesel Generator Sets

The main parameters of the engine	
Brand:	CCEC Cummins
Model:	KTA19-G8
Standby power:	575KW/718.75KVA
Type:	four strokes, waste gas turbine boost,direct spurting type
Cooling way:	water cooling
With type:	Inline type
Bore*Trip:	159mm*159mm
Cylinder:	6 cylinders
Displacement:	19L
Lubricating Capacity:	50L
Speed adjustment way:	electronic speed
Rotating speed:	1500r/min
Starting way:	starting with electricity

The main parameters of the generator	
Brand:	Stamford
Model:	HCI 544FS
Type:	brushless (AVR automatic voltage regulating)
The connecting way of the phase:	three phases four lines
Insulation degree:	H degree
TIF:	<50
THF:	<2%
The factor of rated power:	$\leq \pm 1\%$
Grading Protection:	IP23



## JIANGSU JIANGHAO GENERATOR SETS CO., LTD

Diesel Generator Sets

### Standard control panel



Standard control panel can satisfy the Genset for normal operation, it has the advantages of simple operation, multiple functions, reliable protection. The panel can receive remote open/stop control signal for Genset. (ATS control)

Functional characteristics: Liquid crystal display (LCD); can display a variety of electricity and oil machine parameters in Chinese/English; With automatic and manual, shutdown (Emergency stop) etc control functions, it can protect against low oil pressure, high temperature, low or high voltage, high or low frequency, over current etc, can meet the needs of various Gensets.


### Automatic control panel



Automatic control panel is the basic configuration of Automatic Gensets of unattended operation. The panel can receive remote open/stop unit control signal. (ATS control)

Functional characteristics: LCD display; All Chinese or English operation language on the menu; Genset have Automatic, Manual, Shutdown (Emergency stop) etc control functions, and the Panel has rich programmable output and input connector, humanized interface, multiple functions LCD, which show the inspection parameters via data, symbol and straight at the same time; It has the standard communication interface; RS-485 (Modbus communication protocol), the user can get the "remote control", "remote test" and "remote report" etc monitor functions via Communication (Internet) or Central monitoring system (Upper Computer), it can meet the needs of all kinds of automatic generating set.



<b>Automatic Parallel Synchronizing control panel</b>	
<p>DSE8610</p> 	<p>Automatic parallel synchronizing control panel can collect various parameters and connections of Gensets, high-speed calculating according to customer setting, adjust the Genset Voltage, Frequency and Phase angle automatically to parallel synchronizing and switch automatically, then the panel can manage the active power and positive power of Gensets, coordinate the whole Gensets. It's digital control whole course by computer automatically. The Panel has the functions of Automatic Start, Automatic Parallel synchronizing, Automatic load distributing, Automatic synchronizing load or unload, Reverse power protection, various problems protection, over loading protection, increase or decrease load smoothly, reduce the impact to the Gensets.</p>

<b>Standard Features</b>		
Standard Auto Control System	MCCB	Special tool for Cummins engine
Base Fuel Tank	Oil Drain Valve	One set of fuel filter / oil filter / belt
Starting batteries ( Maintenance-Free & Watering-Free) with connective wires	Exhaust System( including unit muffler)	Documents

<b>Optional parts</b>		
Engine	Fuel system	Control system
Water jacket heater	Diesel daily tank	Automatic control panel
Floating battery charger	The base fuel tank	With the function of "three remote" unit control panel
	Oil-water separator	Parallel Synchronizing panel

<b>Generator</b>	<b>Others</b>	<b>Materials</b>
Prevent condensation heater (PMG)	Rainproof type unit	Engine spare parts manual
	Silent type unit	Spare parts
Droop (with the weaver)	Trailer Type unit	

<b>Sales commitment</b>
<p>The products that we provide are all new, each unit all pass the strict production testing.</p> <p>All of our products offer warranty service, the warranty time of Genset is 12 months or accumulative total 1000 operating hours (whichever occurs first) after commissioning acceptance.</p>