

SWING GATES

FJC-Z2689A/B

The FJC-Z2689A/B serial intelligent swing gate is made of 304 stainless steel and integrally shaped by cold-rolled plate spraying. Its appearance is designed as a modern and simple style matched with lights and lines, giving the whole product a unique modern aesthetic feeling. This serial product uses the grating detection technology, is equipped with 64 pairs of electric eyes, and integrates functional modules such as the door access control, face recognition, QR code scanner, main controller, grating, alarm, and voice system. The product is characterized with a high standard, high quality, high integration, and high security, etc. The product is classified into the imported servo motor version and domestic brushless DC motor version according to different motors used in the product.





Application Scenarios



Community



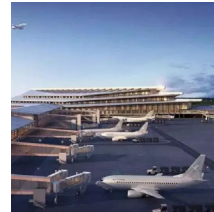
Factory



Bank



Hotel



Airport



Office Building



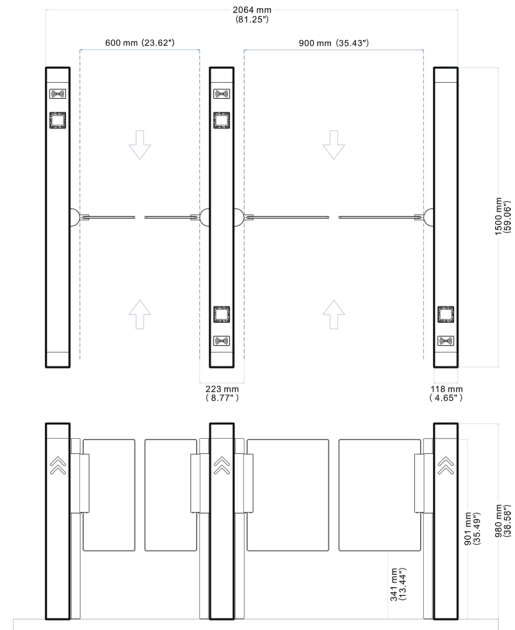
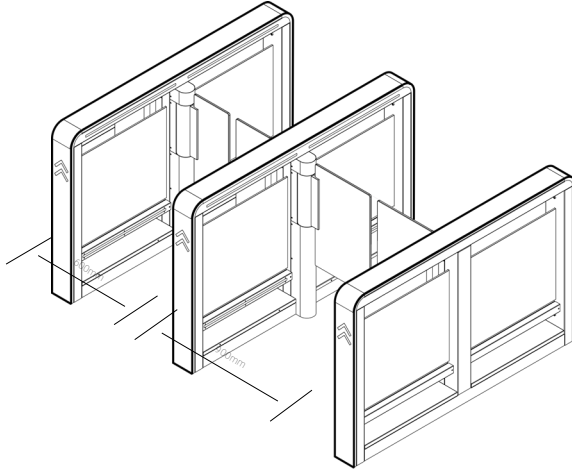
Key Features

- Stable and efficient motor**
 Brushless DC motor or imported servo motor, being powerful, wear-resistant, noise-reducing, stable, and efficient
- Diversified access permissions**
 Diversified access permissions, and expandable to face recognition, IC card swiping, QR code, and ID card swiping, etc.
- Intelligent security protection**
 Multiple intelligent anti-pinch technologies, as well as grating detection and 64 pairs of infrared electric eyes, to ensure access safety
- Acousto-optic interaction**
 Access indicator light, voice broadcast, and other acousto-optic linkage reminders, making access more comfortable and easier
- Anti tailgating and anti intrusion**
 Anti-tailing and anti-trespassing, and audible and visual warning prompts, to ensure access legality and effectiveness
- Automatic management functions**
 Integrate automatic reset, unlocking when being powered off, self-check when being powered on, zero point correction, etc.





Dimensions (mm)



Product Specifications

Product Model	FJC-Z2689A	FJC-Z2689B
Appearance Color	Champagne golden, elegant black, and stainless steel original color	Stainless steel original color
Body/Side Frame Material	Cold-rolled plate and 304 stainless steel	
Material of the Top Cover	Glass or 304 stainless steel	
Gate Material	Tempered glass or acrylic	
Dimensions (L*W*H)	1,500*118*980mm	
Lane Width	600-1,150mm	
Gate Interception Height	900mm	
Gate Height from the Ground	340mm	
Voltage	AC 220V/110V±10%, 50/60HZ	
Device Power (Domestic Motor)	The motor power is 40W and the total power is 100W	
Device Power (Imported Motor)	The motor power is 100W and the total power is 250W	
Access Speed	20 persons/minute when normally closed, 40 persons/minute when normally opened	
Open-closing Speed	0.5s-1.5s adjustable	
Detection Method	Grating detection	
Number of Electric eyes	64	
Communication Interface	Serial port and multi-channel I/O interface	
Communication	RS485 and TCP/IP	
Noise	≤65dB	
Working Temperature	-20°C to +70°C	
Working Humidity	≤90%, no condensation	
Protection Class	IP4X	