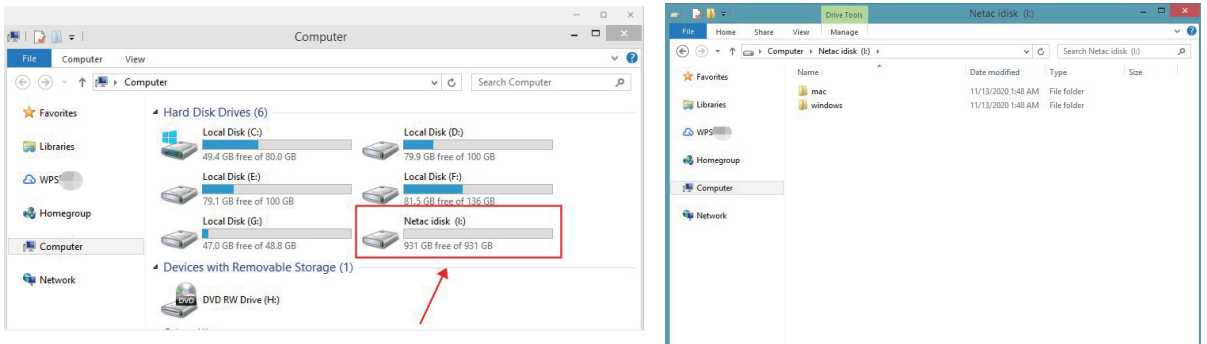


Fingerprint-Encrypting PSSD User Guide

1. Connect to PC

Tips: The following examples are based on Windows 7 system.

1. After unpacking for the initial time, connect PSSD to your PC, and the system will recognize it as a new volume of disk drive, as shown below:



2. Open the new volume: Navigate to the installation package "Finger Tool_V1.1.2.exe" in the folder in Windows, and run the file by double clicking on it and install the client. A shortcut will be created on the desktop.

3. Click on and run the installation package "Finger Tool_V1.1.2.exe" in the folder in Mac system, and a shortcut will be created in control console as well.

4. You can execute the App by clicking on the shortcut.

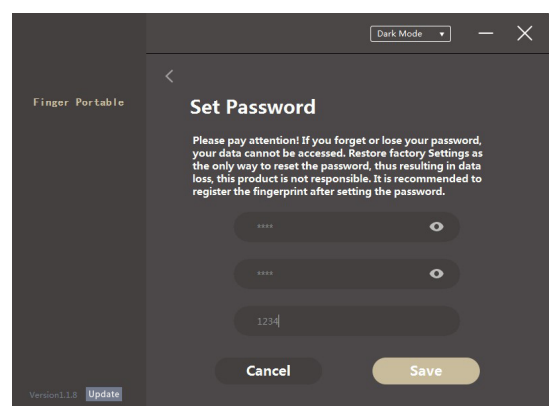
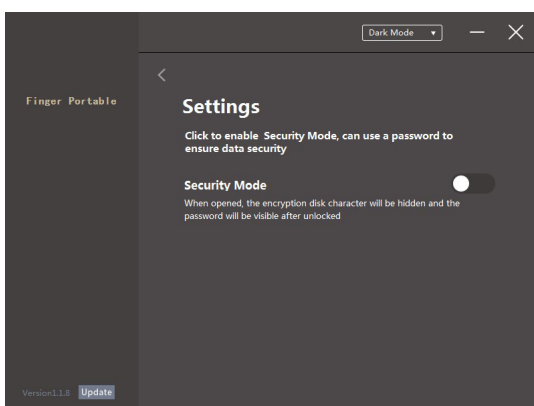
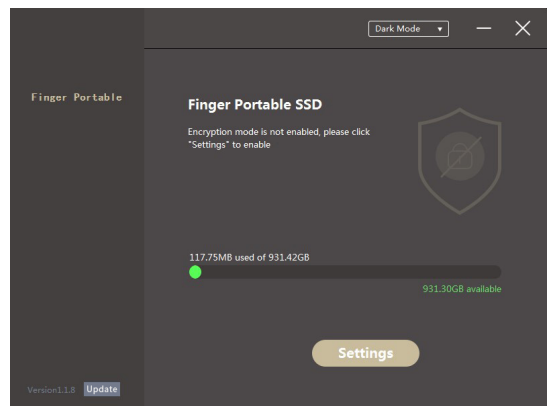
5. Note: In case that it is displayed there is no disk drive connected after you have run App in Mac, enter "Security and Privacy" settings, and grant the permission and then connect PSSD again.

2. Locking PSSD

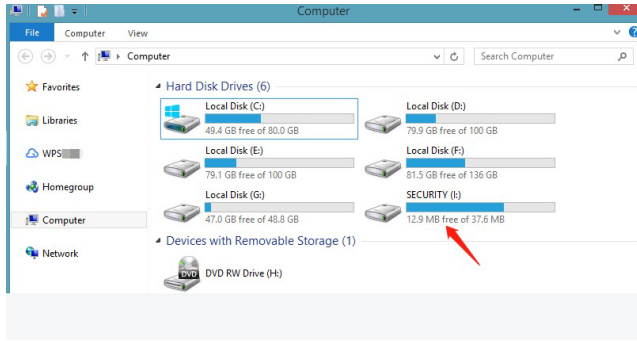
1. Run the client by double clicking on the shortcut on desktop, and make settings to PSSD.

2. Setting procedure:

①. Choose Security and click on Setting Mode, and enter a password consisting of 4-16 characters and then click on "Save" (note: please bear your password in mind).

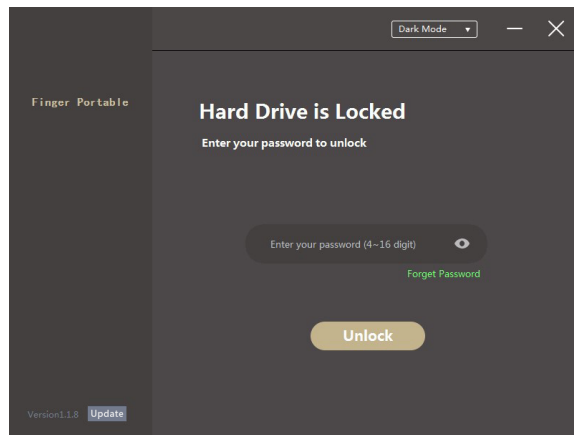


②. After successful locking, an installation disk will be displayed in your PC.

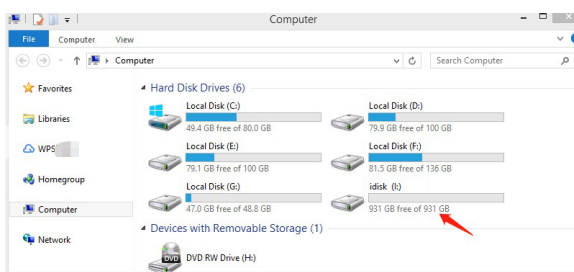
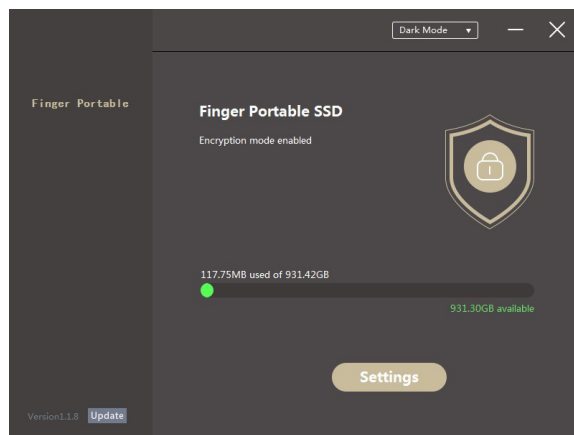


3. Login to client for unlocking

1. Unlocking with password: Enter your password

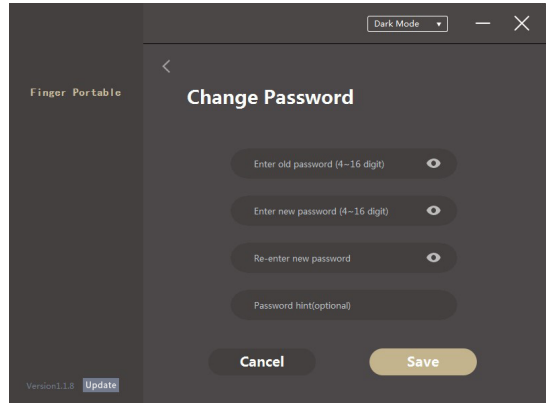
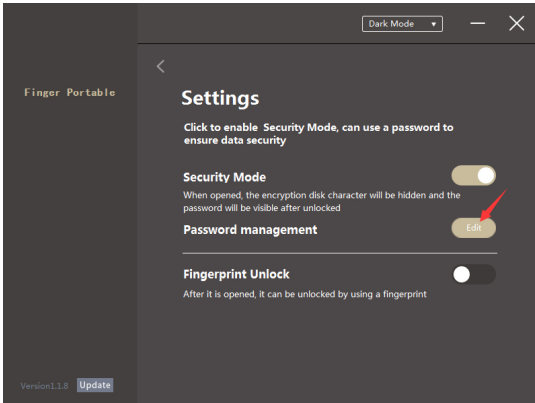
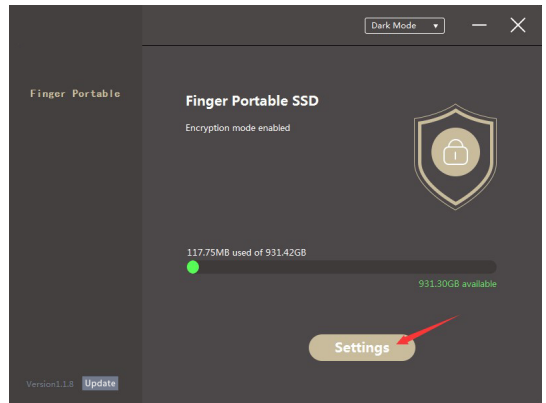


2. After successful unlocking, the client will open main interface, and the disk drive is displayed as encrypted in your PC. At this moment you can copy your data normally.

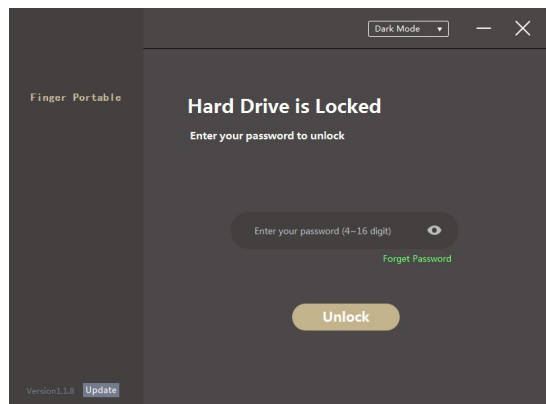


4. Change password

1. Unlock your disk and enter main interface of the App. Click on "Setting" to enter password modification page, where you can enter old password, new password and hint for password, and then click on "Save".

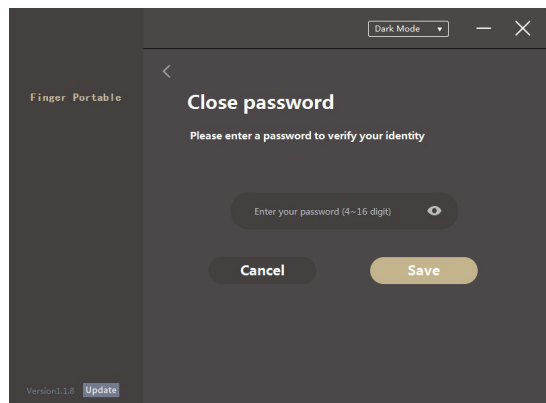
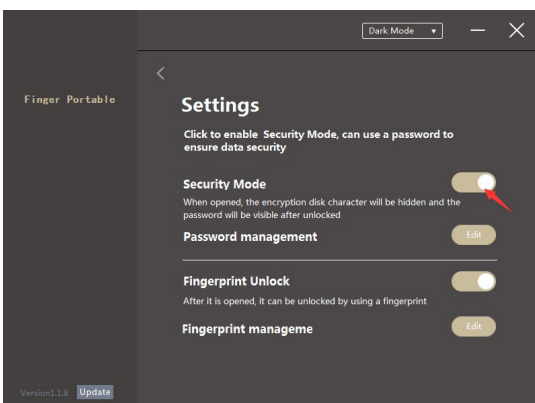


2. After finishing modification, the client will return to setting page automatically. Disconnect and connect PSSD again, and now you need to use your new password for login.



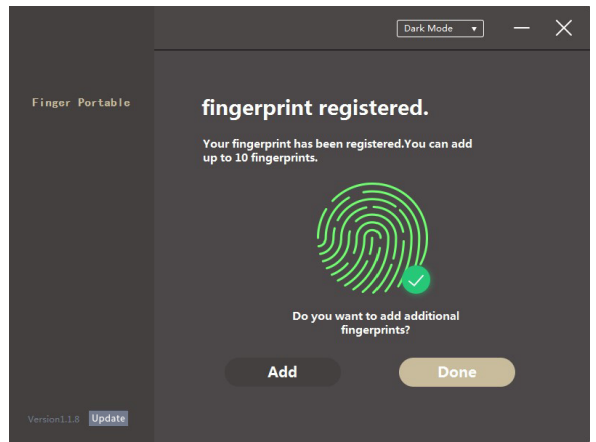
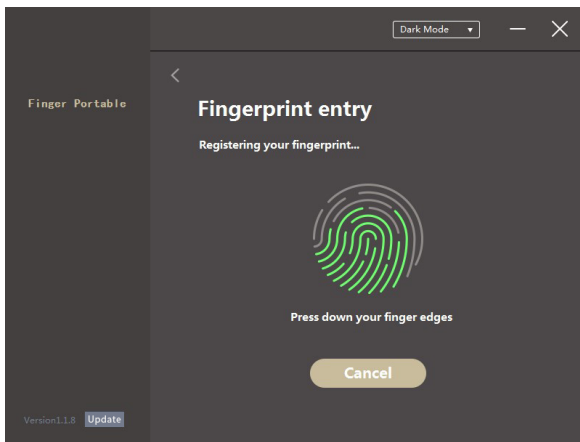
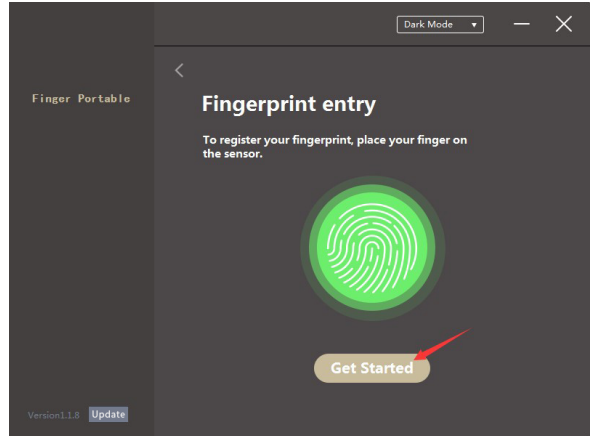
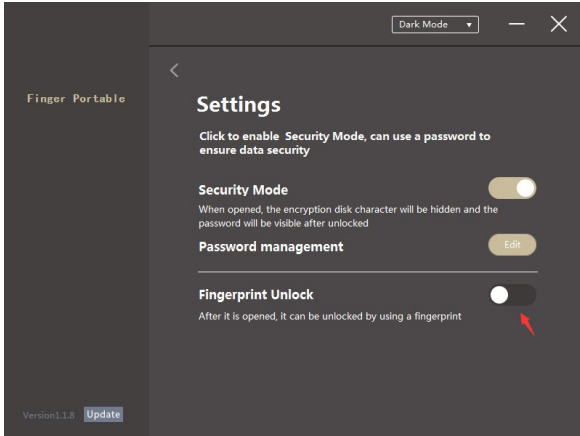
5. Disable lock

After successful unlocking, enter main interface of the client, and click on "Setting" to enter the setting page and choose to disable "Security Mode", and then enter your password and click on OK to disable the lock.



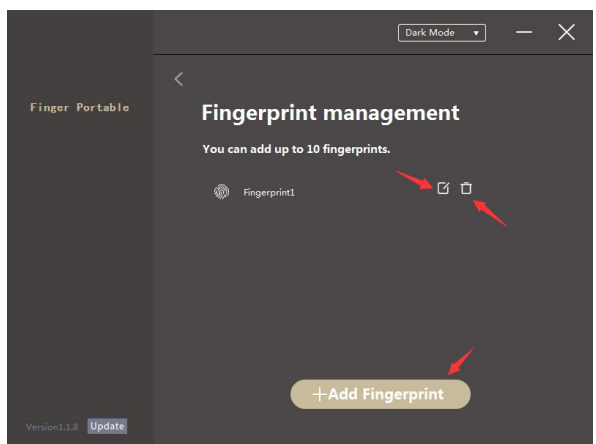
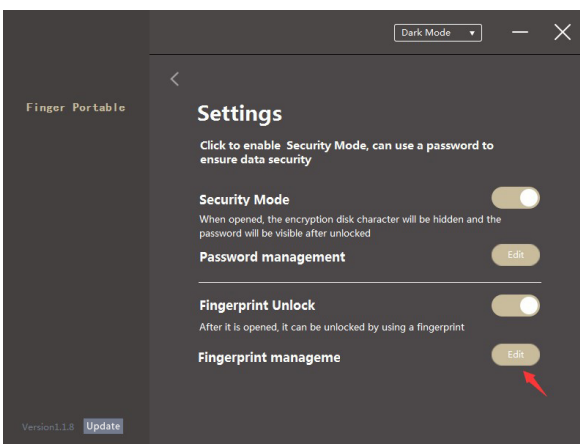
6. Add fingerprint lock

After coded lock is enabled, you can add fingerprint lock by clicking on "Setting" and then on fingerprint lock, and entering password for authentication, and finally inputting your fingerprint. After successful inputting, you can use your fingerprint for unlocking.



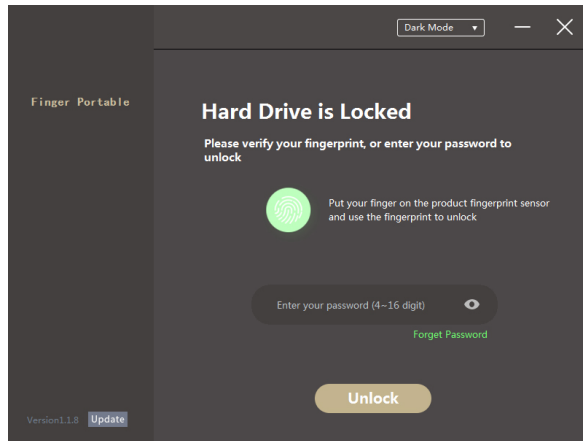
7. Edit fingerprint

After fingerprint function is enabled, you can add, delete or rename your fingerprint.



8. Unlocking with fingerprint

1. After fingerprint function is enabled, you can unlock the disk drive with your fingerprint by connecting the disk, and placing your finger on the fingerprint sensor, or alternatively unlock the disk with your password.

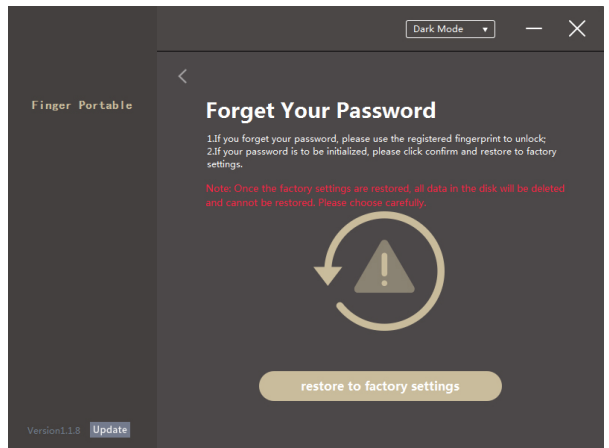
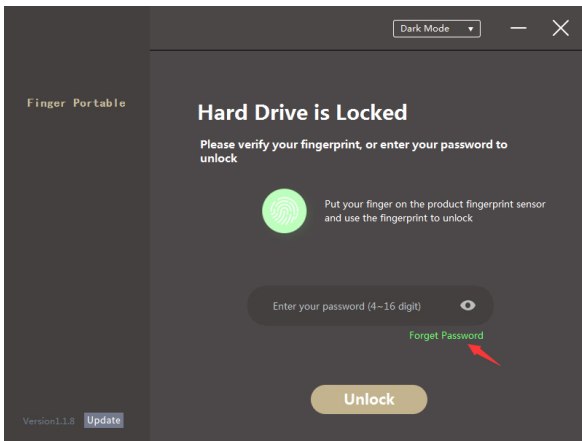


2. After unlocking the disk, if there is no read/write operation on the disk for 15 minutes, the disk will be automatically locked and encrypted. If you need to use it, you need to unlock the disk again

9. Forget password

Tips: Forgetting password will clear all data in the disk!

On unlocking page, click on "Forget password" and then "OK", the disk will be recovered to the factory status, and all data in it will be erased.



10. Change over to Dark Mode

