

INDUSTRIAL LINEAR ACTUATOR  
**工业级电动执行器**

“多大的压力，我都帮您扛！  
风吹日晒、严寒酷暑也没在怕的！”



“Facing any pressure, I've got you covered! Unfazed by wind and sun, I'm your unstoppable companion!”



微信公众号

## 目录 CONTENT

关于宏霸 About Us	-----	3
应用案例 Applications	-----	4
实验与测试 Testing	-----	5
HB-DJ806 / 1,200N	-----	6
HB-DJ809 / 2,000N	-----	7
HB-DJ825 / [静] 2,000N	-----	8
HB-DJ820 / [静] 2,500N	-----	9
HB-DJ830 / 4,000N	-----	10
HB-DJ819 / [高] 4,500N	-----	11
HB-DJ830P / 7,000N	-----	12
HB-DJ850 / [液] 8,000N	-----	13
HB-DJ815 / [高] 8,400N	-----	14
HB-DJ808 / 10,000N	-----	15
HB-DJ805G / 12,000N	-----	16
HB-DJ814 / 15,000N	-----	17
HB-DJ812 / [高] 20,000N	-----	18
HB-DJ817G / [低] 20,000N	-----	19
选型需求 Requirements	-----	20



## 关于宏霸

无锡宏霸机电股份有限公司，创立于 2008 年，是国内首批布局在工业和新能源领域，集研发、制造、营销于一体的电动执行器，及其他高端配件制造商。

无锡宏霸，位于太湖之畔，占地面积 12000 m<sup>2</sup>，厂房建筑面积 22000 m<sup>2</sup>。地理位置优越，交通便利，10 几分钟便可抵达苏南硕放机场，距离最近的无锡新区高铁站也仅 5 分钟车程。

集结了拥有头部企业工作经验，以及自主培养的研发员、工程师 30 余名，获得几十项专利，涵盖实用和外观创新等多个范畴。宏霸始终对企业的自主知识产权、人才占比、研发费用、科研成果转化等严格要求，并获得国家级认可，连续多年荣膺‘高新技术企业’称号。

Wuxi Hongba, founded in 2008, near the Taihu Lake, covers an area of 12,000 square meters. The plant construction area is 22,000 square meters. Convenient transportation. 10 minutes away from the Sunan Shuofang International Airport and 5 minutes from the nearest train station.

We have over 30 R&D personnel and engineers, some with experience at leading enterprises in various fields. Our company has obtained dozens of patents covering both practical and appearance innovations. Hongba places a strong emphasis on independent intellectual property rights, R&D expenses, and the transformation of scientific research achievements. As a result, we have been recognized as a high-tech enterprise for several years.

# 电动推杆应用

Some applications



工程车辆和机械  
Construction Vehicle and Machinery



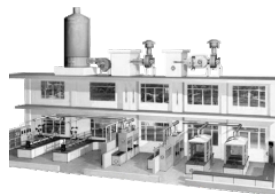
农业机械  
Agricultural Machinery



户外动力设备  
Outdoor Power Equipment



工业自动化  
Industrial Automation



通风及畜牧业解决方案  
Ventilation and Animal Husbandry



智能装配  
Intelligent Industrial Equipments



医疗用床设备  
Bed Equipment for Medical Use



残疾人车辆自动化  
Vehicle for Diverse Abilities



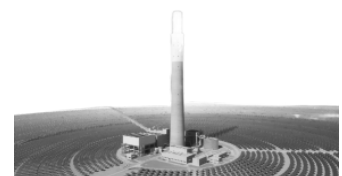
餐饮自动化  
Catering Automation



多功能沙发  
Multifunctional Sofa



太阳能光伏及风能  
PV Solar and Wind energy



太阳能光热发电  
CSP Power Plant

## 100%功能测试 / 100% Function Test

在每一种应用方面，推杆只是其中之一，然而每一种科学的测试对您以及您的客户有着不言而喻的重要性，宏霸出厂的所有产品都经过了100%的功能试验。根据推杆类型，我们进行了不同的测试。我们保证，基于宏霸机电系统的电动推杆解决方案，将是一个可靠的，运行数年的解决方案。

In every application, the actuator is just one of the components, but the significance of each scientific test for you and your clients is evident. All products manufactured by HONGBA undergo 100% functional testing. Depending on the actuator type, different tests are conducted. We assure you that HONGBA's electric actuator solutions will be a reliable, long-lasting solution.

### 电气测试 Electrical Tests:

所有电子配件接受电源，开关，信号电缆，控制信号等测试。根据工业标准测试其对无线电噪声、放电和脉冲群的抗电气干扰性。

All electrical parts are tested i.e. power supply, power & signal cables, feedback signals etc. Electrical immunity is tested according to industrial standards i.e. for radio noise, electrical discharge and burst.



工业排放通过标准: EN/IEC61000-6-4  
机器的电气设备: EN/IEC60204  
铁路应用一车辆装置: EN 50121-3-2  
游艇指令: 94/25/EC  
土方机械: EN/ISO 13766

工业抗干扰性通用标准: EN/IEC61000-6-2  
汽车指令: 2004/104/EC  
农林机械: EN/ISO 14982  
建筑机械: EN/ISO 13309  
\*这些试验不适用于第三方产品!

Generic standard emission industry EN/IEC 61000-6-4  
Electrical equipment of machinery EN/IEC 60204  
Railway applications - Rolling stock apparatus EN 50121-3-2  
Recreational crafts directive 94/25/EC  
Earth moving machinery EN/ISO 13766  
Generic standard immunity industry EN/IEC 61000-6-2  
Automotive Directive 2004/104/EC  
Agricultural and forestry machines EN/ISO 14982  
Construction machinery EN/ISO 13309

### 耐候测试 Climate Tests

气候测试是测试推杆在极端天气下以及在温度骤变的环境中的运行情况。某些测试中，推杆必须在100°C与-30°C温度之间反复运行，仍能保持完好性能。

In the climatic test, the actuators are tested to operate in extreme temperatures as well as to endure rapid changes in temperature. In some tests, the actuator has to withstand going from a +100°C environment to -30°C repeatedly and still maintain full functionality.



冷试法: EN600068-2-1 (Ab)  
干热: EN600068-2-2 (Bb)  
变化: EN60068-2-14  
湿热: EN60068-2-30  
盐雾测试: EN60068-2-52  
保护程度: EN60529-IP66  
化学物: BS7691/96小时

Cold test: EN600068-2-1 (Ab)  
Dry heat: EN60068-2-2 (Bb)  
Change of temperature: EN60068-2-14  
Damp heat: EN60068-2-30  
Salt spray: EN60068-2-52  
Degrees of protection: EN60529-IP66  
Chemicals: BS7691/96 hours

### 机械测试 Mechanical Tests

振动: 推杆须经受住三个方向的继续振动  
冲击: 使推杆接受高达100G的来自六个方向的三次冲击  
撞击: 推杆承受高达40G的来自六个方向的数百次撞击

Vibration: The actuator must withstand continuous vibration in three directions.

Shock: The shock test puts the actuator through 3 shocks of up to 100 G in each of 6 directions.

Bump: The actuator receives bumps of up to 40 G in each of six directions several hundred times.



振动: EN60068-2-36 (Fdb)  
撞击: EN60068-2-36 (Fdb)  
冲击: EN60068-2-27 (Ea)

Vibration: EN60068-2-36(Fdb)  
Bump: EN60068-2-36(Fdb)  
Shock: EN60068-2-27(Ea)

# HB-DJ806

工业级、小尺寸



## a. 选配参数

- 额定载荷: 50-1,200N 可选
- 空载速度: 5.5-80mm/s 可选
- 输入电压: 12, 24, 36, 48V DC 可选
- 定制行程: 建议≤1,000mm
- 占空比: 25%, 常温满载的条件下, 建议连续工作时长不超过 4 分钟
- 丝杆类型: 标配梯形丝杆
- 电机类型: 标配直流有刷电机
- 信号反馈: 可选限位信号、电位计、磁簧开关

## b. 标准防护

- 内置双向限位开关, 完全伸出和缩回时可自动断电
- 工作温度-10°C 到 65°C (可选配-40 °C超低温防护)
- IP66 防尘防水, 可户外作业
- 铝合金机身和活塞杆, 防锈镀锌镍连接端头, 粉末冶金齿轮

## a. Options

- Rated Force: 50-1,200N
- Free-load Speed: 5.5-80mm/s
- Input Volt.: 12, 24, 36, 48V DC
- Stroke: Suggest ≤1,000mm
- Duty Cycle: 25%, suggest ≤ 4 minutes continuous working with full load at 20°C
- Leadscrew: ACME as standard
- Motor Type: Brushed DC motor
- Position Feedback: End-stop signal, Potentiometer, or Reed switches for options.

## b. Protections

- Double limit switches, shut off the motor automatically at the end of its travel
- Operating temp. -10°C to 65°C (Optional lower temp. -40 °C )
- Protection rating IP66, outdoor use
- Aluminum alloy housing and rod shaft, corrosion-resistant Zn-Ni coated rod end, powder metallurgy gears.

# HB-DJ809

工业级、小尺寸



## a. 选配参数

- 额定载荷: 200-2,000N 可选
- 空载速度: 5-55mm/s 可选
- 输入电压: 12, 24, 36, 48V DC 可选
- 定制行程: 建议 $\leq 1,000$ mm
- 占空比: 25%, 常温满载的条件下, 建议连续工作时长不超过 4 分钟
- 丝杆类型: 标配梯形丝杆
- 电机类型: 标配直流有刷电机
- 信号反馈: 可选配限位信号、霍尔传感器、电位计、磁簧开关

## b. 标准防护

- 内置双向限位开关, 完全伸出和缩回时可自动断电
- 工作温度 -10°C 到 65°C ( 可选配 -40 °C 超低温防护 )
- IP66 防尘防水, 可户外作业
- 铝合金机身、不锈钢活塞杆、防蚀镀锌镍连接端头、粉末冶金齿轮

## a. Options

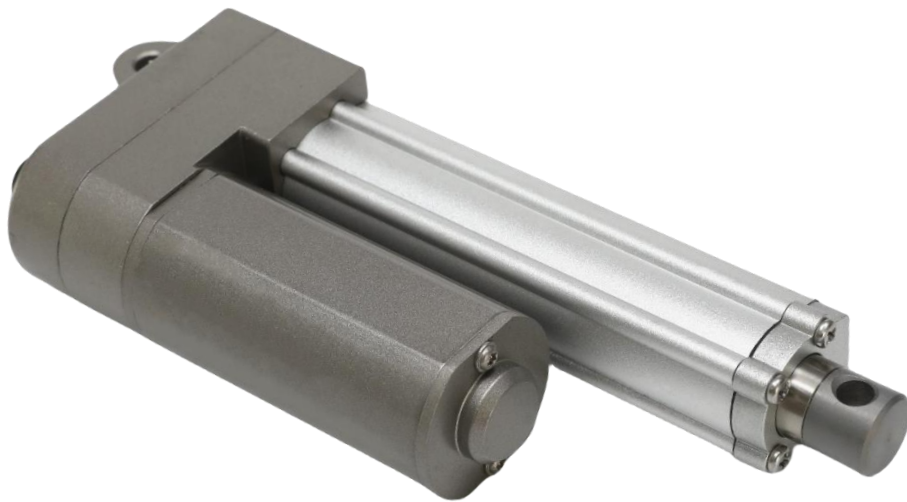
- Rated Force: 200- 2,000N
- Free-load Speed: 5-55mm/s
- Input Volt.: 12, 24, 36, 48V DC
- Stroke: Suggest  $\leq 1,000$ mm
- Duty Cycle: 25%, suggest  $\leq 4$  minutes continuous working with full load at 20°C
- Leadscrew: ACME as standard
- Motor Type: Brushed DC motor
- Position Feedback: End-stop signal, Hall effect sensor, Potentiometer, or Reed switches for options.

## b. Protections

- Double limit switches, shut off the motor automatically at the end of its travel
- Operating temp. -10°C to 65°C ( Optional lower temp. -40 °C )
- Protection rating IP66, outdoor use
- Aluminum alloy housing, stainless steel rod shaft, corrosion-resistant Zn-Ni coated rod end, powder metallurgy gears.

# HB-DJ825

小尺寸、低噪音 45dB



## a. 选配参数

- 额定载荷: 1,000/1,500/ 2,000N 可选
- 空载速度: 6-15mm/s 可选
- 输入电压: 12, 24, 36, 48V DC 可选
- 定制行程: 建议≤600mm
- 占空比: 20%, 常温满载的条件下, 建议连续工作时长不超过 2 分钟
- 丝杆类型: 标配梯形丝杆
- 电机类型: 标配直流有刷电机
- 信号反馈: 可选配限位信号、霍尔传感器、磁簧开关

## b. 标准防护

- 内置双向限位开关, 完全伸出和缩回时可自动断电
- 工作温度-10°C 到 65°C (可选配-40 °C超低温防护)
- IP66 防尘防水, 可户外作业
- 铝合金机身、不锈钢活塞杆、防蚀镀锌镍连接端头

## a. Options

- Rated Force: 1,000/1,500/ 2,000N
- Free-load Speed: 6-15mm/s
- Input Volt.: 12, 24, 36, 48V DC
- Stroke: Suggest ≤600mm
- Duty Cycle: 20%, suggest ≤ 2 minutes continuous working with full load at 20°C
- Leadscrew: ACME as standard
- Motor Type: Brushed DC motor
- Position Feedback: End-stop signal, Hall effect sensor, or Reed switches for options.

## b. Protections

- Double limit switches, shut off the motor automatically at the end of its travel
- Operating temp. -10°C to 65°C (Optional lower temp. -40 °C )
- Protection rating IP66, outdoor use
- Aluminum alloy house, stainless steel rod shaft, corrosion-resistant Zn-Ni coated rod end.



# HB-DJ820

工业级、小尺寸、45dB



## a. 选配参数

- 额定载荷: 500-2,500N 可选
- 空载速度: 2.5-22mm/s 可选
- 输入电压: 12, 24, 36, 48V DC 可选
- 定制行程: 建议≤600mm
- 占空比: 20%, 常温满载的条件下, 建议连续工作时长不超过 2 分钟
- 丝杆类型: 标配梯形丝杆
- 电机类型: 标配直流有刷电机
- 信号反馈: 可选配限位信号、霍尔传感器

## b. 标准防护

- 内置双向限位开关, 完全伸出和缩回时可自动断电
- 工作温度 -10°C 到 65°C ( 可选配 -40 °C 超低温防护 )
- IP66 防尘防水, 可户外作业
- 铝合金机身、不锈钢活塞杆、防锈镀锌镍连接端头

## a. Options

- Rated Force: 500-2,500N
- Free-load Speed: 2.5-22mm/s
- Input Volt.: 12, 24, 36, 48V DC
- Stroke: Suggest ≤600mm
- Duty Cycle: 20%, suggest ≤ 2 minutes continuous working with full load at 20°C
- Leadscrew: ACME as standard
- Motor Type: Brushed DC motor
- Position Feedback: End-stop signal or Hall effect sensor.

## b. Protections

- Double limit switches, shut off the motor automatically at the end of its travel
- Operating temp. -10°C to 65°C ( Optional lower temp. -40 °C )
- Protection rating IP66, outdoor use
- Aluminum alloy house, stainless steel rod shaft, corrosion-resistant Zn-Ni coated rod end

# HB-DJ830

工业级、中型推杆



## a. 选配参数

- 额定载荷: 1,000-4,000N 可选
- 空载速度: 5.5-35mm/s 可选
- 输入电压: 12, 24, 36, 48V DC 可选
- 定制行程: 建议≤1,000mm
- 占空比: 25%, 常温满载的条件下, 建议连续工作时长不超过 4 分钟
- 丝杆类型: 标配梯形丝杆
- 电机类型: 标配直流有刷电机
- 信号反馈: 可选配限位信号、霍尔传感器、磁簧开关

## b. 标准防护

- 内置双向限位开关, 完全伸出和缩回时可自动断电
- 内置机械离合过载保护
- 工作温度-10°C 到 65°C (可选配-40 °C超低温防护)
- IP65 防尘防水, 可户外作业
- 不锈钢活塞杆、防锈镀锌镍连接端头、粉末冶金齿轮

## a. Options

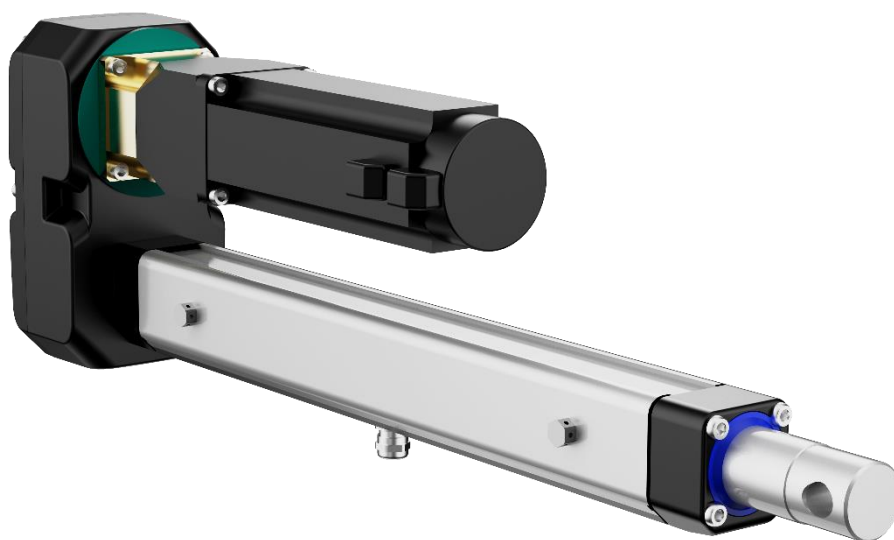
- Rated Force: 1,000-4,000N
- Free-load Speed: 5.5-35mm/s
- Input Volt.: 12, 24, 36, 48V DC
- Stroke: Suggest ≤1,000mm
- Duty Cycle: 25%, suggest ≤ 4 minutes continuous working with full load at 20°C
- Leadscrew: ACME as standard
- Motor Type: Brushed DC motor
- Position Feedback: End-stop signal, Hall effect sensor, or Reed switches.

## b. Protections

- Double limit switches, shut off the motor automatically at the end of its travel
- Mechanical clutch overload protection
- Operating temp. -10°C to 65°C (Optional lower temp. -40 °C )
- Protection rating IP65, outdoor use
- Stainless steel rod shaft, corrosion-resistant Zn-Ni coated rod end, powder metallurgy gears.

# HB-DJ819

工业级、中型、高频



## a. 选配参数

- 额定载荷: 750-4,500N 可选
- 空载速度: 11-70mm/s 可选
- 输入电压: 直流、交流可选
- 定制行程: 建议 $\leq 600$ mm
- 占空比: 20-100%可选
- 丝杆类型: 标配滚珠丝杆
- 电机类型: 直流有刷、直流无刷、三相交流、伺服交流

## b. 标准防护

- 双向限位开关, 可通过外部控制限位
- 工作温度 -15°C 到 40°C
- IP55 防尘防水, 可户外作业

## a. Options

- Rated Force: 750-4,500N
- Free-load Speed: 11-70mm/s
- Input Volt.: DC or AC
- Stroke: Suggest  $\leq 600$ mm
- Duty Cycle: 20-100% for option
- Leadscrew: Ball screw as standard
- Motor Type: Brushed DC, Brushless DC, 3-phase AC, Servo AC motor

## b. Protections

- Double limit switches signal output
- Operating temp. -15°C to 40°C
- Protection rating IP55, outdoor use

# HB-DJ830P

工业级、中型推杆



## a. 选配参数

- 额定载荷: 2,000-7,000N 可选
- 空载速度: 5.5-35mm/s 可选
- 输入电压: 12, 24, 36, 48V DC 可选
- 定制行程: 建议 $\leq 1,000$ mm
- 占空比: 25%, 常温满载的条件下, 建议连续工作时长不超过 4 分钟
- 丝杆类型: 标配梯形丝杆
- 电机类型: 标配直流有刷电机
- 信号反馈: 可选配限位信号、霍尔传感器、磁簧开关

## b. 标准防护

- 内置双向限位开关, 完全伸出和缩回时可自动断电
- 内置机械离合过载保护
- 标配手动操作孔位, 可用作紧急情况下的辅助驱动
- 工作温度 -10°C 到 65°C ( 可选配 -40 °C 超低温防护 )
- IP65 防尘防水, 可户外作业
- 铝合金壳体、不锈钢活塞杆、防锈镀锌镍连接端头、粉末冶金齿轮

## a. Options

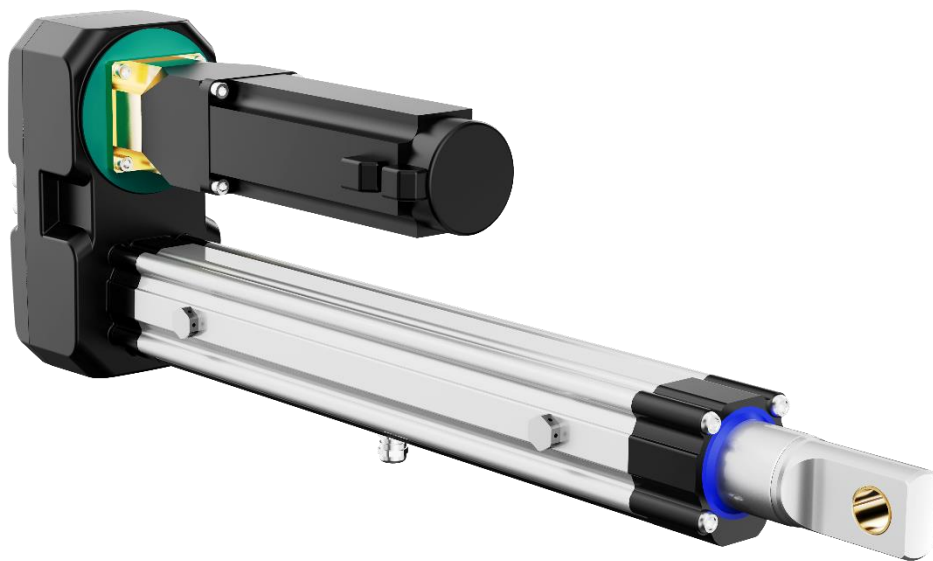
- Rated Force: 2,000-7,000N
- Free-load Speed: 5.5-35mm/s
- Input Volt.: 12, 24, 36, 48V DC
- Stroke: Suggest  $\leq 1,000$ mm
- Duty Cycle: 25%, suggest  $\leq 4$  minutes continuous working with full load at 20°C
- Leadscrew: ACME as standard
- Motor Type: Brushed DC motor
- Position Feedback: End-stop signal, Hall effect sensor, or Reed switches.

## b. Protections

- Double limit switches, shut off the motor automatically at the end of its travel
- Mechanical clutch overload protection
- Manual override as standard for emergency
- Operating temp. -10°C to 65°C ( Optional lower temp. -40 °C )
- Protection rating IP65, outdoor use
- Stainless steel rod shaft, aluminum alloy housing, corrosion-resistant Zn-Ni coated rod end, powder metallurgy gears.

# HB-DJ815

工业级、中型、高频



## a. 选配参数

- 额定载荷: 1,400-8,400N 可选
- 空载速度: 15-60mm/s 可选
- 输入电压: 直流、交流可选
- 定制行程: 建议 $\leq 800$ mm
- 占空比: 20-100%可选
- 丝杆类型: 标配滚珠丝杆
- 电机类型: 直流有刷、直流无刷、三相交流、伺服交流

## b. 标准防护

- 双向限位开关, 可通过外部控制限位
- 工作温度 -15°C 到 40°C
- IP55 防尘防水, 可户外作业

## a. Options

- Rated Force: 1,400-8,400N
- Free-load Speed: 15-60mm/s
- Input Volt.: DC or AC
- Stroke: Suggest  $\leq 800$ mm
- Duty Cycle: 20-100% for option
- Leadscrew: Ball screw as standard
- Motor Type: Brushed DC, Brushless DC, 3-phase AC, Servo AC motor

## b. Protections

- Double limit switches signal output
- Operating temp. -15°C to 40°C
- Protection rating IP55, outdoor use

# HB-DJ850

工业级、中型、电液



## a. 选配参数

- 一体式内置液压驱动的电动执行器
- 额定载荷：4,000/ 6,000/ 8,000N 可选
- 空载速度：16mm/s
- 输入电压：12, 24, 36, 48V DC 可选
- 定制行程：建议≤350mm
- 载荷形式：垂直压缩、垂直拉伸、水平、摆动式
- 占空比：25%，常温满载的条件下，建议连续工作时长不超过 4 分钟
- 驱动类型：液压系统（缸体和储油箱集成在一起）
- 电机类型：标配直流有刷电机

## b. 标准防护

- 专为应对冲击、颠簸的恶劣工作环境设计
- 内置双向限位开关，完全伸出和缩回时可自动断电
- 标配手动释放功能，可用作紧急情况下的辅助驱动
- 工作温度 -20°C 到 65°C
- IP65 防尘防水，可户外作业

## a. Options

- Integrated electro-hydraulic drive
- Rated Force: 4,000/ 6,000/ 8,000N
- Free-load Speed: 16mm/s
- Input Volt.: 12, 24, 36, 48V DC
- Stroke: Suggest ≤350mm
- Force Direction: Pressure, extension, horizontal, swinging
- Duty Cycle: 25%, suggest ≤ 4 minutes continuous working with full load at 20°C
- Cylinder and oil tank are integrated
- Motor Type: Brushed DC motor

## b. Protections

- Specially designed to withstand harsh working environments with impacts and vibrations
- Double limit switches, shut off the motor automatically at the end of its travel
- Operating temp. -20°C to 65°C
- Protection rating IP65, outdoor use

# HB-DJ808

工业级、中型推杆



## a. 选配参数

- 额定载荷: 2,000-10,000N 可选
- 空载速度: 5.5-35mm/s 可选
- 输入电压: 12, 24, 36, 48V DC 可选
- 定制行程: 建议≤1,000mm
- 占空比: 25%, 常温满载的条件下, 建议连续工作时长不超过 4 分钟
- 丝杆类型: 标配梯形丝杆, 可选配滚珠丝杆
- 电机类型: 标配直流有刷电机
- 信号反馈: 可选配限位信号、霍尔传感器、电位计

## b. 标准防护

- 内置双向限位开关, 完全伸出和缩回时可自动断电
- 内置机械离合过载保护, 可加装热敏过流保护
- 工作温度-10°C 到 65°C (可选配-40 °C超低温防护)
- IP65 防尘防水, 可户外作业
- 不锈钢活塞杆、防蚀镀锌镍连接端头、粉末冶金齿轮

## a. Options

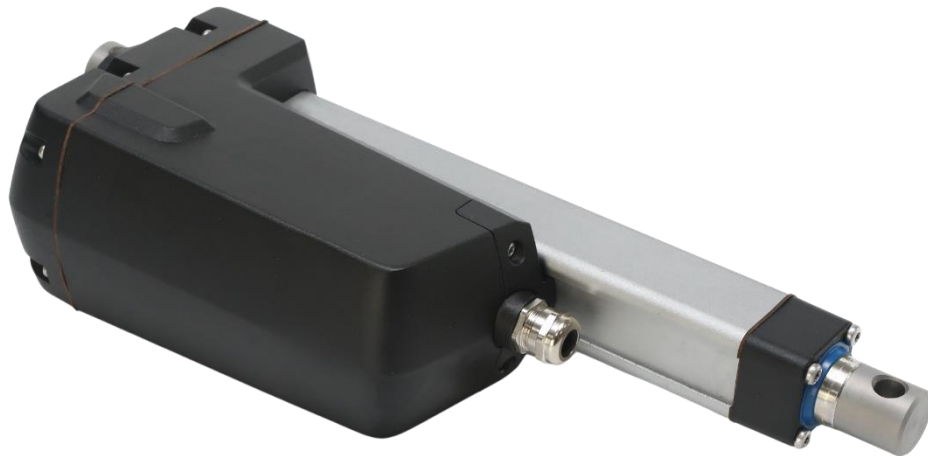
- Rated Force: 2,000-10,000N
- Free-load Speed: 5.5-35mm/s
- Input Volt.: 12, 24, 36, 48V DC
- Stroke: Suggest ≤1,000mm
- Duty Cycle: 25%, suggest ≤ 4 minutes continuous working with full load at 20°C
- Leadscrew: ACME as standard (Ball screw for option)
- Motor Type: Brushed DC motor
- Position Feedback: End-stop signal, Hall effect sensor, or Reed switches.

## b. Protections

- Double limit switches, shut off the motor automatically at the end of its travel
- Mechanical clutch overload protection, and optional thermal over-current protection
- Operating temp. -10°C to 65°C (Optional lower temp. -40 °C )
- Protection rating IP65, outdoor use
- Stainless steel rod shaft, corrosion-resistant Zn-Ni coated rod end, powder metallurgy gears.

# HB-DJ805G

工业级、重型推杆



## a. 选配参数

- 额定载荷: 3,200-12,000N 可选
- 空载速度: 6.0-37mm/s 可选
- 输入电压: 12, 24, 36, 48V DC 可选
- 定制行程: 建议≤1,000mm
- 占空比: 25%, 常温满载的条件下, 建议连续工作时长不超过 4 分钟
- 丝杆类型: 标配梯形丝杆, 可选配滚珠丝杆
- 电机类型: 标配直流有刷电机
- 信号反馈: 可选配限位信号、霍尔传感器、电位计
- 控制方式: 逻辑电平, 或同步控制

## b. 标准防护

- 内置双向限位开关, 完全伸出和缩回时可自动断电
- 内置电子过载保护
- 标配手动操作孔位, 可用作紧急情况下的辅助驱动
- 工作温度-10°C 到 65°C (可选配-40 °C超低温防护)
- IP66 防尘防水, 可户外作业
- 铝合金壳体、不锈钢活塞杆、防蚀镀锌镍连接端头、粉末冶金齿轮

## a. Options

- Rated Force: 3,200-12,000N
- Free-load Speed: 6.0-37mm/s
- Input Volt.: 12, 24, 36, 48V DC
- Stroke: Suggest ≤1,000mm
- Duty Cycle: 25%, suggest ≤ 4 minutes continuous working with full load at 20°C
- Leadscrew: ACME as standard (Ball screw for option)
- Motor Type: Brushed DC motor
- Position Feedback: End-stop signal, Hall effect sensor, or Potentiometer.
- Controlling: Logic level, or multiple synch control

## b. Protections

- Double limit switches, shut off the motor automatically at the end of its travel
- Electronic overload protection
- Manual override as standard for emergency
- Operating temp. -10°C to 65°C (Optional lower temp. -40 °C )
- Protection rating IP66, outdoor use
- Stainless steel rod shaft, aluminum alloy housing, corrosion-resistant Zn-Ni coated rod end, powder metallurgy gears.



# HB-DJ814

工业级、重型推杆



## a. 选配参数

- 额定载荷：7,500-15,000N 可选
- 空载速度：5.5-11mm/s 可选
- 输入电压：24V 或 48V DC 可选
- 定制行程：建议 $\leq 1,000$ mm
- 占空比：15%-20%
- 丝杆类型：标配滚珠丝杆
- 电机类型：直流有刷电机

## b. 标准防护

- 双向限位开关，可通过外部控制限位
- 工作温度-15°C 到 40°C
- IP65 防尘防水，可户外作业

## a. Options

- Rated Force: 7,500-15,000N
- Free-load Speed: 5.5-11mm/s
- Input Volt.: 24V or 48V DC
- Stroke: Suggest  $\leq 1,000$ mm
- Duty Cycle: 15-20%
- Leadscrew: Ball screw as standard
- Motor Type: Brushed DC motor

## b. Protections

- Double limit switches signal output
- Operating temp. -15°C to 40°C
- Protection rating IP65, outdoor use

# HB-DJ812

工业级、重型、高频



## a. 选配参数

- 额定载荷: 5,000-20,000N 可选
- 空载速度: 19-83mm/s 可选
- 输入电压: 直流、交流可选
- 定制行程: 建议 $\leq 1,000$ mm
- 占空比: 15-100%可选
- 丝杆类型: 标配滚珠丝杆
- 电机类型: 直流有刷、直流无刷、三相交流、伺服交流

## b. 标准防护

- 双向限位开关, 可通过外部控制限位
- 工作温度 -15°C 到 40°C
- IP55 防尘防水, 可户外作业

## a. Options

- Rated Force: 5,000-20,000N
- Free-load Speed: 19-83mm/s
- Input Volt.: DC or AC
- Stroke: Suggest  $\leq 1,000$ mm
- Duty Cycle: 15-100% for option
- Leadscrew: Ball screw as standard
- Motor Type: Brushed DC, Brushless DC, 3-phase AC, Servo AC motor

## b. Protections

- Double limit switches signal output
- Operating temp. -15°C to 40°C
- Protection rating IP55, outdoor use

# HB-DJ817G

工业级、重型、低频



## a. 选配参数

- 额定载荷: 20,000N
- 空载速度: 1mm/s
- 输入电压: 24V DC
- 定制行程: 建议 $\leq 1,000$ mm
- 占空比: 低频使用
- 丝杆类型: 标配滚珠丝杆
- 电机类型: 标配直流有刷电机
- 信号反馈: 霍尔传感器或 485 通信

## b. 标准防护

- 内置双向限位开关, 完全伸出和缩回时可自动断电
- 工作温度  $-40^{\circ}\text{C}$  到  $65^{\circ}\text{C}$
- IP66 防尘防水, 可户外作业
- 不锈钢活塞杆、防蚀镀锌镍连接端头

## a. Options

- Rated Force: 20,000N
- Free-load Speed: 1mm/s
- Input Volt.: 24V DC
- Stroke: Suggest  $\leq 1,000$ mm
- Duty Cycle: Suggest for low frequency use
- Leadscrew: Ball screw as standard
- Motor Type: Brushed DC motor
- Position Feedback: Hall effect sensor or 485 communication

## b. Protections

- Double limit switches, shut off the motor automatically at the end of its travel
- Operating temp.  $-40^{\circ}\text{C}$  to  $65^{\circ}\text{C}$
- Protection rating IP66, outdoor use
- Stainless steel rod shaft, corrosion-resistant Zn-Ni coated rod end





## 无锡宏霸机电股份有限公司

地址：江苏省无锡市新吴区漓江路 5 号  
电话：+86-510-81011388  
传真：+86-510-81018780  
邮箱：media@wxhongba.com



微信公众号



实景看厂