

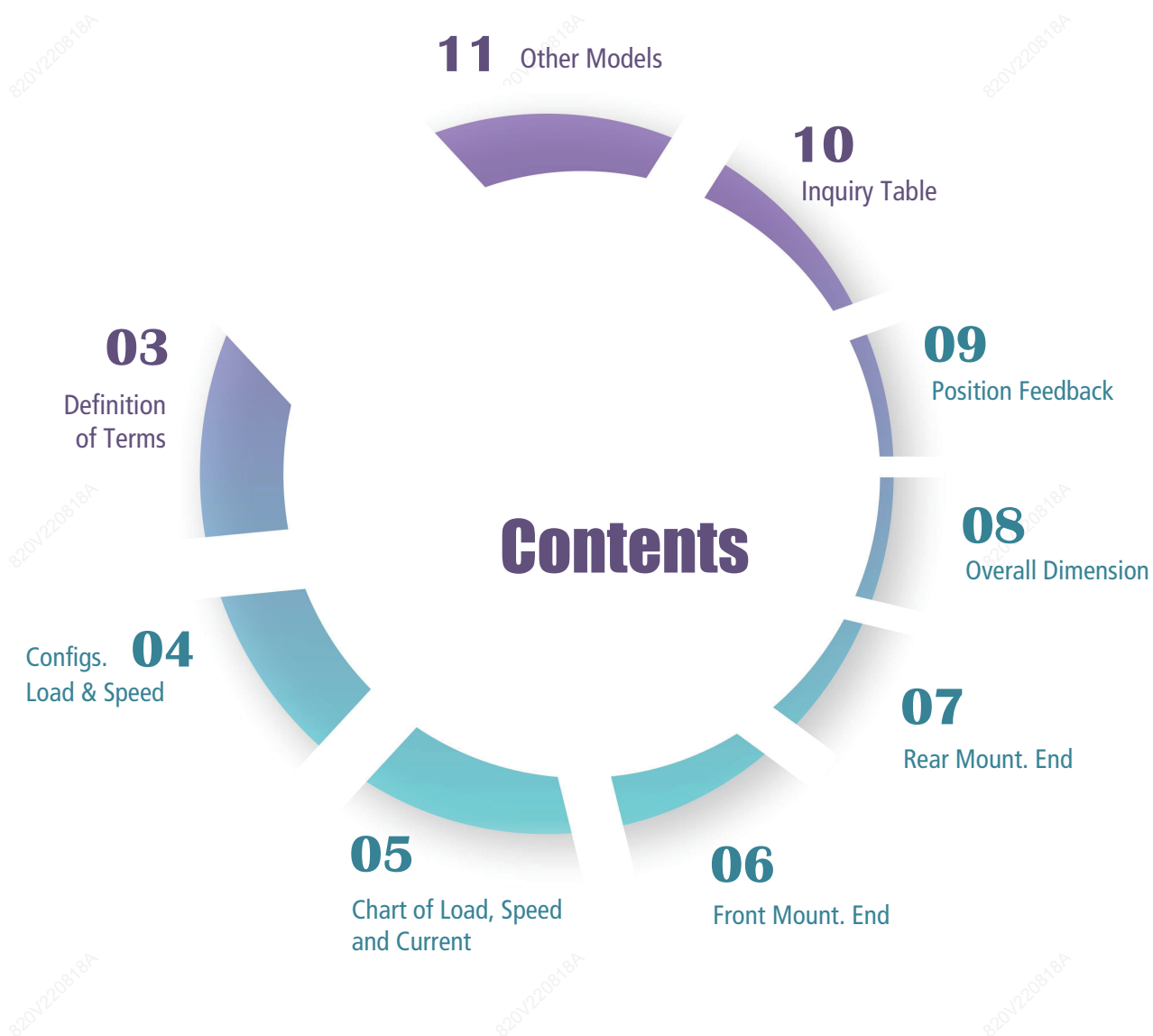
HB-DJ820

Data Sheet



Item No.	Parameter	Value
1	Stroke	100mm
2	Stroke speed	100mm/s
3	Stroke time	1.0s
4	Stroke force	100N
5	Stroke force	100N
6	Stroke force	100N
7	Stroke force	100N
8	Stroke force	100N
9	Stroke force	100N
10	Stroke force	100N
11	Stroke force	100N
12	Stroke force	100N
13	Stroke force	100N
14	Stroke force	100N
15	Stroke force	100N
16	Stroke force	100N
17	Stroke force	100N
18	Stroke force	100N
19	Stroke force	100N
20	Stroke force	100N
21	Stroke force	100N
22	Stroke force	100N
23	Stroke force	100N
24	Stroke force	100N
25	Stroke force	100N
26	Stroke force	100N
27	Stroke force	100N
28	Stroke force	100N
29	Stroke force	100N
30	Stroke force	100N
31	Stroke force	100N
32	Stroke force	100N
33	Stroke force	100N
34	Stroke force	100N
35	Stroke force	100N
36	Stroke force	100N
37	Stroke force	100N
38	Stroke force	100N
39	Stroke force	100N
40	Stroke force	100N
41	Stroke force	100N
42	Stroke force	100N
43	Stroke force	100N
44	Stroke force	100N
45	Stroke force	100N
46	Stroke force	100N
47	Stroke force	100N
48	Stroke force	100N
49	Stroke force	100N
50	Stroke force	100N
51	Stroke force	100N
52	Stroke force	100N
53	Stroke force	100N
54	Stroke force	100N
55	Stroke force	100N
56	Stroke force	100N
57	Stroke force	100N
58	Stroke force	100N
59	Stroke force	100N
60	Stroke force	100N
61	Stroke force	100N
62	Stroke force	100N
63	Stroke force	100N
64	Stroke force	100N
65	Stroke force	100N
66	Stroke force	100N
67	Stroke force	100N
68	Stroke force	100N
69	Stroke force	100N
70	Stroke force	100N
71	Stroke force	100N
72	Stroke force	100N
73	Stroke force	100N
74	Stroke force	100N
75	Stroke force	100N
76	Stroke force	100N
77	Stroke force	100N
78	Stroke force	100N
79	Stroke force	100N
80	Stroke force	100N
81	Stroke force	100N
82	Stroke force	100N
83	Stroke force	100N
84	Stroke force	100N
85	Stroke force	100N
86	Stroke force	100N
87	Stroke force	100N
88	Stroke force	100N
89	Stroke force	100N
90	Stroke force	100N
91	Stroke force	100N
92	Stroke force	100N
93	Stroke force	100N
94	Stroke force	100N
95	Stroke force	100N
96	Stroke force	100N
97	Stroke force	100N
98	Stroke force	100N
99	Stroke force	100N
100	Stroke force	100N

WUXI HONGBA
 Linear Actuator



Dear Customers,

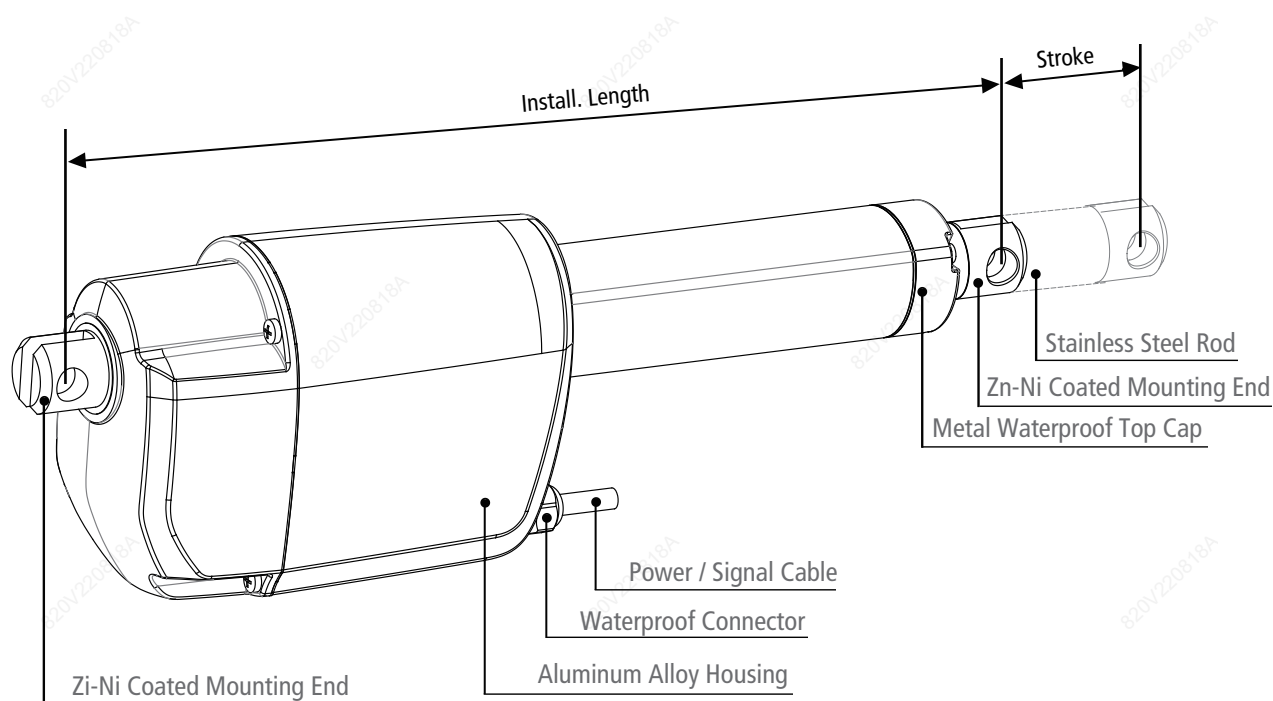
What a big world ! But thanks to crazy technology, it's been getting smaller than ever, so that we can meet here from all corners of the world. It's our pleasure to have opportunities to provide you with a variety of products and services to help with the implementation of your amazing designs.

We present our products thoroughly in front of you by using refined parameters and words, so that you can find the most suitable solution.

Next, we will take you to a deeper understanding of Hongba's products. Please read this datasheet carefully. You are also welcome to leave valuable comments and suggestions to help Hongba improve itself continuously.


HB Engineer Team

Definition of Terms



Stroke	How far the rod extends outwards from the body. The difference between fully extended length and fully retracted length. [Customizable]
Install. Length	The fully closed size. [Customizable]
Front Mount. End	Optional.
Rear Mount. End	Optional.
Mount. Holes	Can be rotated by 90°.
Dynamic Force	The max force that actuator is able to carry when it is moving.
Selflocking	The max force that linear actuator is able to hold when it stops.
Weather Protection	IP XX. The first digit: dust protection. The second digit: liquid protection. Please refer to [Table 1].
Duty Cycle	Continuous working time 'a', rest time 'b'. Duty cycle is $a/(a+b) \times 100\%$. Please refer to [Table 1].
Speed	Include free-load speed and full-load speed.
Hall Sensor	Provide pulse signals. Displacement measurement is achieved through pulse counting, and the phase difference of the waveform can be used to identify the rotation direction of motor. Check [Table 1] to see if it is available.
Potentiometer	Potentiometer is a three-terminal variable resistor with a rotating contact which is used to measure the displacement of actuators. Check [Table 1] to see if it is available.
Manual Override	Can be used to extend or retract the actuator without power for emergency. Check [Table 1] to see if it is available.

Configs.

Color	<input type="checkbox"/> Silver	<input checked="" type="checkbox"/> Black	<input type="checkbox"/> Custom			
Lead Screw	<input checked="" type="checkbox"/> Acme Screw	<input type="checkbox"/> Ball Screw				
Operation Mode	<input checked="" type="checkbox"/> Electrical	<input type="checkbox"/> Electrical + Manual				
Application	<input checked="" type="checkbox"/> Industrial	<input type="checkbox"/> Furniture	<input type="checkbox"/> Medical			
Operational Temp.	<input type="checkbox"/> 5 to 40°C	<input checked="" type="checkbox"/> -10 to 65°C	<input type="checkbox"/> -40 to 65°C			
Operating Noise	<input checked="" type="checkbox"/> ≤45 dB	<input type="checkbox"/> ≤50 dB	<input type="checkbox"/> ≤65 dB			
Stroke Range	<input checked="" type="checkbox"/> 50-600mm	<input type="checkbox"/> 600-1,000mm				
Dynamic Load	<input type="checkbox"/> ≤1,200N	<input checked="" type="checkbox"/> ≤2,500N	<input type="checkbox"/> ≤4,000N	<input type="checkbox"/> ≤7,000N	<input type="checkbox"/> ≤12,000N	<input type="checkbox"/> ≤20,000N
Duty Cycle	<input type="checkbox"/> 10%	<input checked="" type="checkbox"/> 20% *	<input type="checkbox"/> 25%	<input type="checkbox"/> 50%	<input type="checkbox"/> 100%	
Motor Type	<input checked="" type="checkbox"/> Brushed DC	<input type="checkbox"/> Stepper Motor	<input type="checkbox"/> Brushless	<input type="checkbox"/> Servo Motor		
Overload Protection	<input type="checkbox"/> None	<input type="checkbox"/> Clutch	<input type="checkbox"/> Electronic	<input checked="" type="checkbox"/> Thermistor		
Weather Protection	<input type="checkbox"/> IP20	<input type="checkbox"/> IP43	<input type="checkbox"/> IP54	<input type="checkbox"/> IP65	<input checked="" type="checkbox"/> IP66	
Position Feedback	<input checked="" type="checkbox"/> None	<input type="checkbox"/> Endstop Signal	<input type="checkbox"/> Hall Sensor	<input type="checkbox"/> Potentiometer	<input type="checkbox"/> Encoder	<input type="checkbox"/> Reed Switches
Input Voltage	<input checked="" type="checkbox"/> 12VDC	<input type="checkbox"/> 24VDC	<input type="checkbox"/> 36VDC	<input checked="" type="checkbox"/> 48VDC	<input type="checkbox"/> 110VAC	<input type="checkbox"/> 220VAC

* Don't exceed two minutes continuous working at full load with 20°C.

Options for DJ820 Other Models

[Table 1]

Parameters

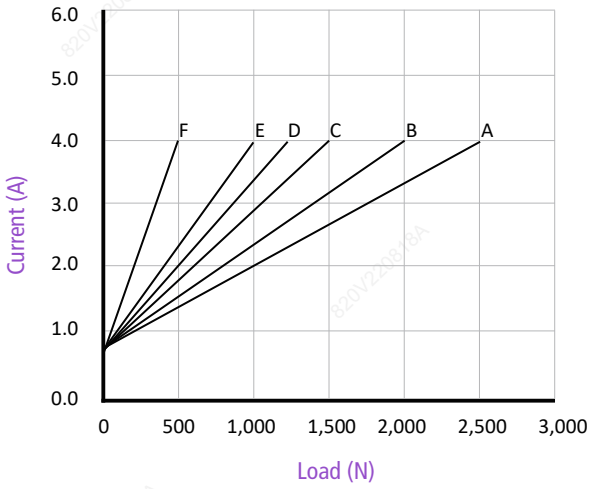
Fill in code:

Code	Max. Dynamic Load ^②	Max. Self-locking	Reduction Ratio	Pitch	Speed±10% ^① (mm/s)		Max. Stroke ^③
	(N)				(N)	-	
A	2,500	3,500	86.6:1	3.17	2.5	1.8	300
B	2,000	3,000	86.6:1	5	4.0	3.0	400
C	1,500	2,500	86.6:1	7.5	6.0	4.0	400
D	1,200	2,000	43.3:1	5	8.0	6.0	500
E	1,000	1,500	43.3:1	7.5	12.0	8.0	500
F	500	700	43.3:1	15	22.0	17.0	600

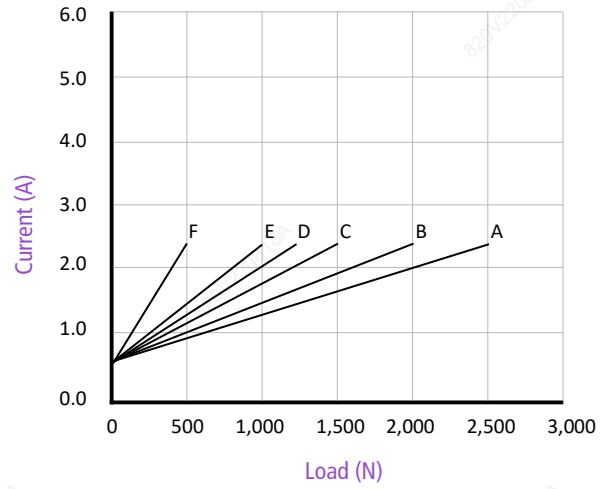
[Table 2]

- ① Measurements are made with actuators in connection with stable power supplies and ambient temperature at 20°C.
- ② For example, when real load is 1500N, choosing code (C) is fine. Of course, you can also choose (B) or even (A) which comes with more load buffer, higher safety factor and longer product service time.
- ③ There are many factors affecting the "customizable maximum stroke", such as load, speed, force direction, etc., so the real application scenarios should be considered. If the parameters you required are not listed, please contact our sales engineers.

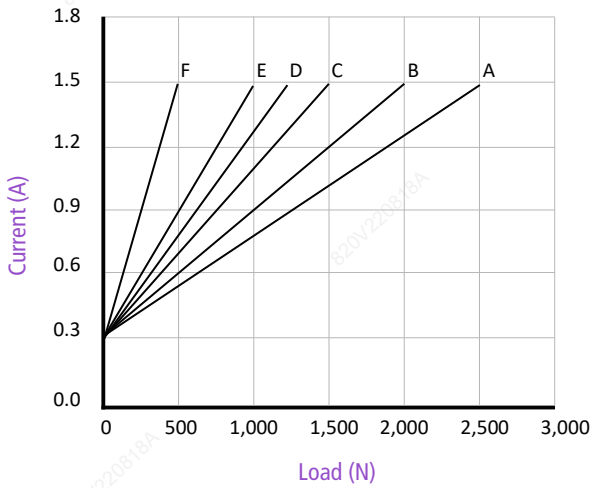
1 = 12v



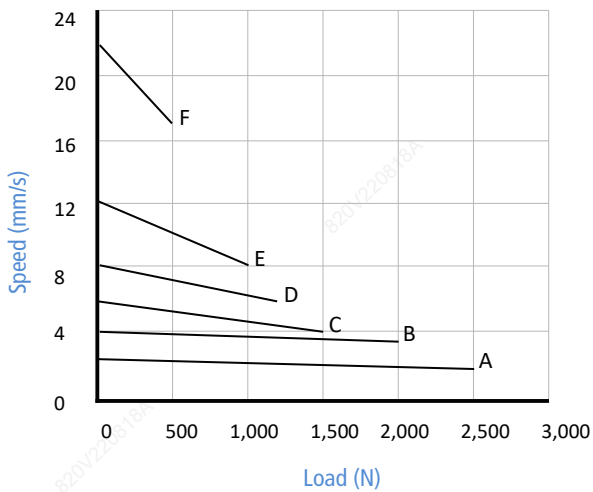
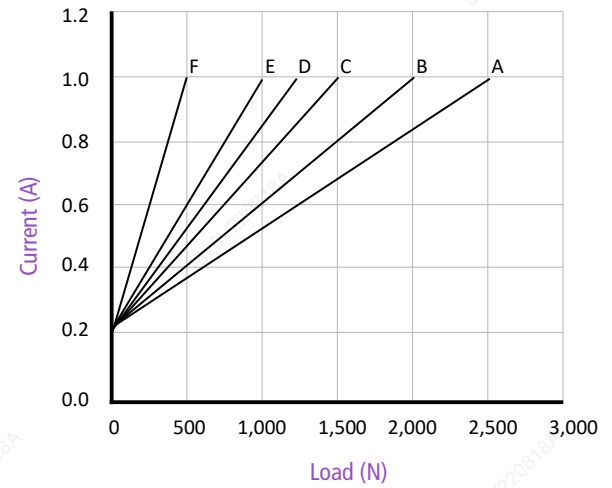
2 = 24v



3 = 36v



4 = 48v

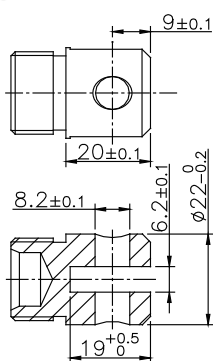


* Measurements are made with actuators in connection with stable power supplies and ambient temperature at 20°C.

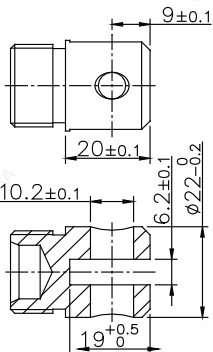
Front Mounting End

1. Please contact our sales team if none of the options below meet your requirements.

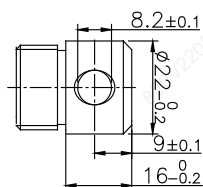
Fill in code:



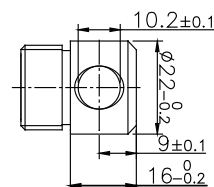
F01



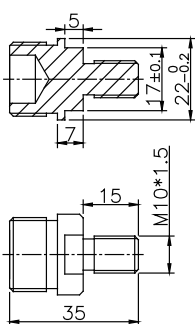
F02



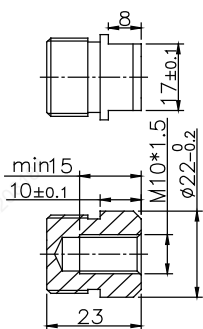
F03



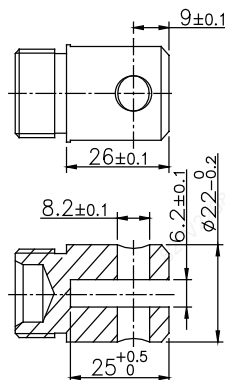
F04



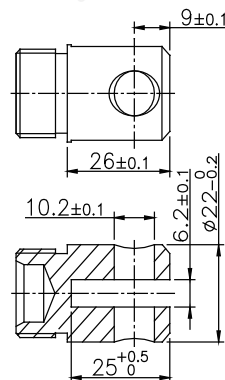
F05



F06

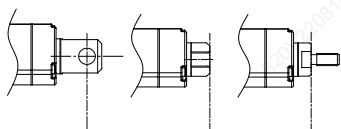


F07



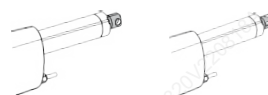
F08

2. Start of Installation Length



3. Hole Directions

Fill in code:



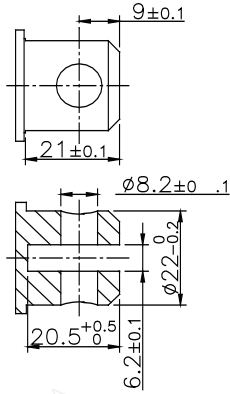
1 = 90°

2 = 0°

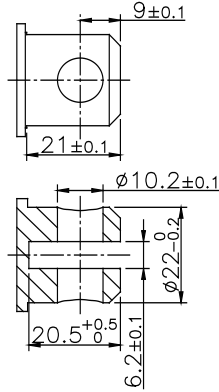
Rear Mounting End

1. Please contact our sales team if none of the options below meet your requirements.

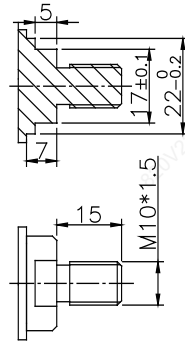
Fill in code:



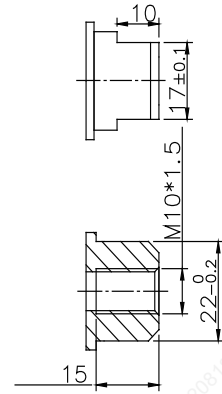
R01



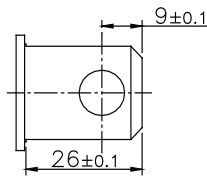
R02



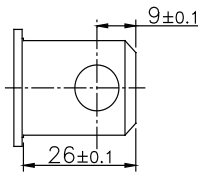
R03



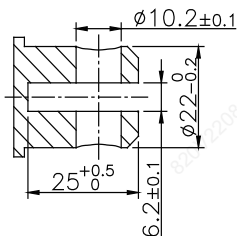
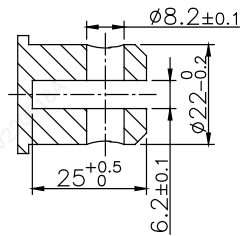
R04



R05



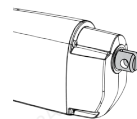
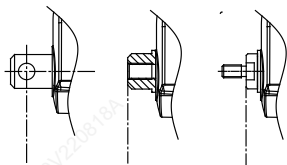
R06



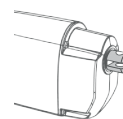
2. End of Installation Length

3. Hole Directions

Fill in code:



1 = 90°

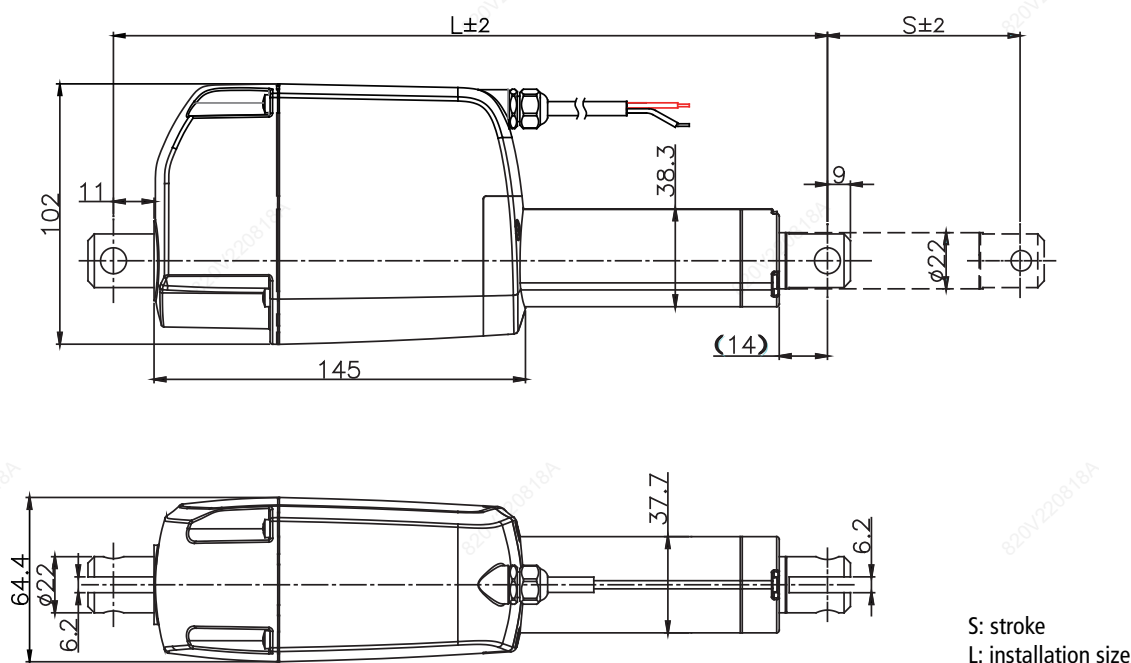


2 = 0°

Dimension

S = mm, L = mm

1. Overall Size



2. Installation Size ($L \geq A+B$)

A. Mounting Ends	Rear Ends	
Front Ends	R01- R06	R07, R08
F01- F06	S+120 (L is min.190mm)	S+125 (L is min.195mm)
F07, F08	S+125 (L is min.195mm)	S+130 (L is min. 200mm)

[Table 3]

B. Stroke Range	mm
30 - 299	+ 0
300 - 399	+ 30
≥ 400	+ 50

[Table 4]

Example

Front Mount.	Rear Mount.	S (mm)	A (mm)	B (mm)	$L \geq A+B$ (mm)
F07	R01	300	300+125	+30	≥ 455

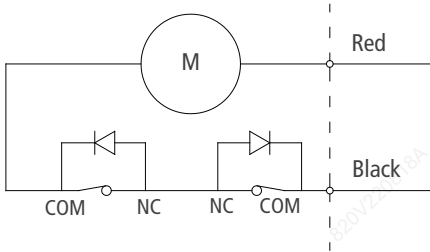
[Table 5]

Signal Feedback

Fill in code: 0 = None
1 = Endstop Signal
2 = Hall Effect Sensor

0. Standard Limit Switches without Signal feedback

Standard DJ820 comes with limit switches that shut off the motor automatically at the end of its travel.

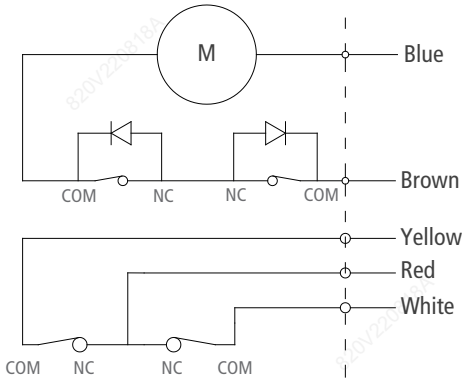


Wire Coding		
	Black	Red
Extend	-	+
Retract	+	-

[Table 6]

1. Endstop Signal

Equipped with two separated switches. One is to cut off power supply at either end of stroke, and the other is to supply signals.



Power Wire Coding		
	Brown	Blue
Extend	-	+
Retract	+	-

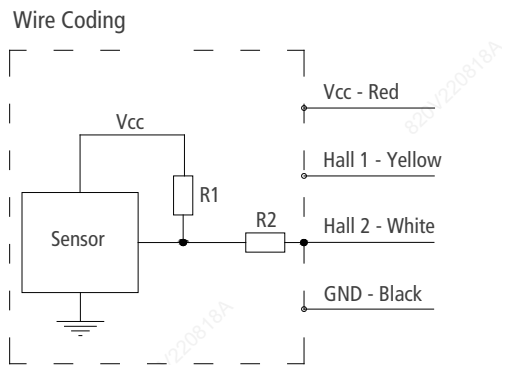
Signal Wire Coding	
Red	Extend / Retract limit, N.C. contact
Yellow	Extend limit. COM.
White	Retract limit. COM.

[Table 7]

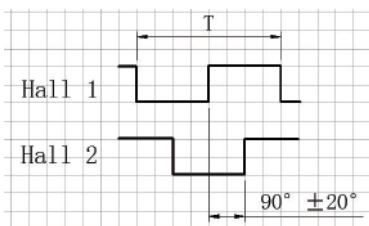
2. Hall Sensor (standard dual-sensor)

Code	Magnetic Pole	Pulse Equivalent (pulse/mm)
A	1 pole pair (standard)	27.30
B		17.33
C		11.55
D		8.67
E		5.78
F		2.89

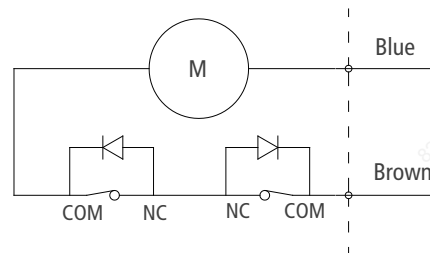
[Table 8]



* Power supply (V)= 5~15V



Oscillogram



Inquiry Table

RESET

	Voltage	1 = 12VDC 2 = 24VDC 3 = 36VDC 4 = 48VDC
	Load & Speed	See [Table 2]
	Stroke (mm)	Please contact us if the stroke you required is out of range.
	Install. Length (mm)	See Table [3] [4] [5]
	Front Mount. End	F01 - F08 FX = Custom
	Rear Mount. End	R01 - R06 RX = Custom
	Mount. Hole Direction	Front 1 = 90° 2 = 0° Rear 1 = 90° 2 = 0°
	Signal Feedback	0 = None 1 = Endstop Signal 2 = Hall Effect Sensor
	Cable Length	1 = 500 mm 2 = 1,000 mm X = Custom
	Connector	0 = Tinned Bared Wires 1 = Match with KZ-series Controller X = Custom
	Working Temperature	1 = -10 °C to 65 °C 2 = -40 °C to 65 °C
Application	Working Frequency	Estimated cycles work per day
	End Use	Indoor or outdoor, and please describe your end use.
	Your Contact	Company Name Tel. Email

Terms of Use

Due to our continuous improving of HB products, Hongba reserves the right to change or modify our products without prior notice, at any time. Therefore, Hongba cannot guarantee the correct and actual status of said information on its products. The user is responsible for determining the suitability of HB products for specific application.

Wuxi Hongba Mechanical Electrical Equipment. Co., Ltd.

Cell:

Email:

Tel.: 0510-85436730

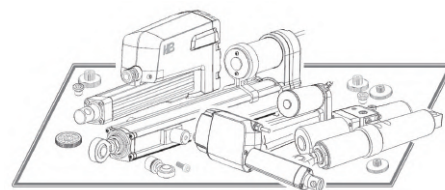
Website: hbactuator.com

Address: 5 Lijiang Rd. Xinwu District, Wuxi 214028 China

 You may also be interested in...

Model	Load (N)	Stroke (mm)	Speed (mm/s)	Install.Length (mm)	Overall Size (mm)	IP rate	Application
DJ803 (Track)	1,500	50-600	16-32	155	155 x 77.4 x L	IP20	Furniture
DJ823	3,000	50-600	5.0-15	S+155	148.5 x 80 x L	IP54	Furniture Medical Care
DJ810	4,000	50-600	5.0-32	S+150	156 x 83 x L	IP43	Furniture Medical Care
DJ801	6,000	50-600	4.7-28	S+175	156 x 83 x L	IP43	Furniture Medical Care
DJ822	6,000	50-600	5.0-16	S+175	166 x 91 x L	IP54	Furniture Medical Care
DJ806	1,200	50-600	5.5-80	S+105	40 x 75 x L	IP66	Industrial
DJ809	2,000	50-600	5.0-55	S+108	45 x 77.5 x L	IP66	Industrial
DJ825	2,000	50-600	6-15	S+115	43 x 84.5 x L	IP66	Furniture Medical Care Industrial
* DJ820	2,500	50-600	2.5-22	S+120	64.5 x 102 x L	IP66	Furniture Medical Care Industrial
DJ820P	1,000	50-600	25-50	S+140	64.5 x 102 x L	IP66	Industrial
DJ830	4,000	50-600	5.5-35	S+200	76 x 151 x L	IP65	Industrial
DJ830P	7,000	50-600	5.5-35	S+200	76 x 151 x L	IP65	Industrial
DJ808	7,000	50-600	5.5-35	S+250	77 x 151 x L	IP65	Industrial
DJ805G	12,000	50-1,000	6.5-37	S+200	102 x 154 x L	IP66	Industrial

* You are now reading...



For more information, please visit our website hbactuator.com