



# Dawn Series

## 182 HJT Solar Module

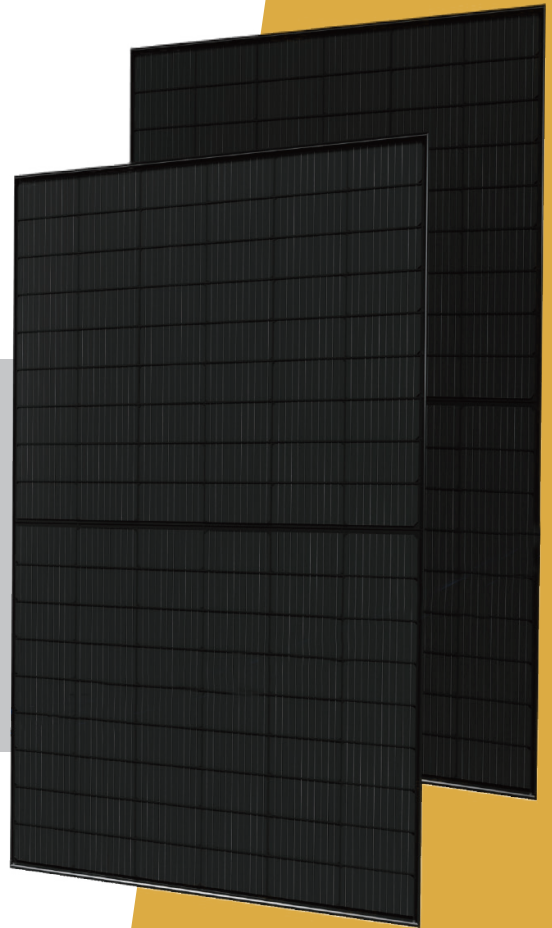
PRODUCT:

### N1054D-TB

POWER RANGE:

# 420-440W

\*Recommend for residential rooftop



**440W**

Max Power Output

**22.5%**

Max Panel Efficiency

**SMBB**

Super Multi-busbar Technology

**HJT**

182 Wafer



### Excellent Energy Efficiency

- No PID&LID;
- Market leading weak light effect and temperature coefficient (-0.24%/°C);
- 182mm large size and SMBB technology provide higher efficiency (22.5%)



### High Double-sided Rate 90%

- Additional power generation revenue>5%



### Printing Technology

- Exclusive patent protection, available for pattern customization



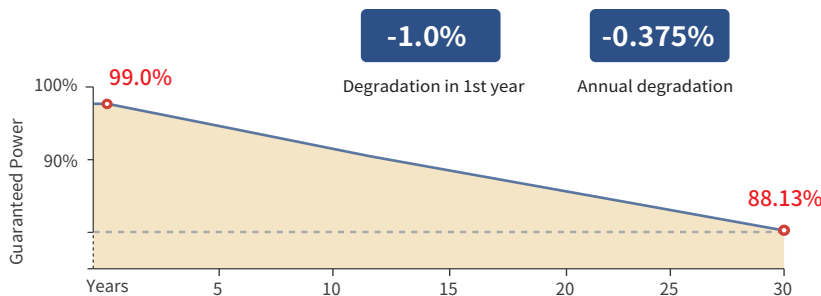
### Multi-busbar Technology

- Extremely high light utilization;
- Greater power collection capability;
- Effectively improve power output and reliability



### Highest Fire Rating

- Class A



**15**

15 years Product Warranty

**30**

30 years Power Warranty

### Certificates & Warranty

IEC61215 2016&IEC61730 2016



Electrical data(STC)

|                              |       |       |       |       |       |
|------------------------------|-------|-------|-------|-------|-------|
| Max. Power (W)               | 420   | 425   | 430   | 435   | 440   |
| Max. Power Voltage Vmp(V)    | 34.49 | 34.76 | 35.03 | 35.30 | 35.57 |
| Max. Power Current Imp(A)    | 12.18 | 12.23 | 12.28 | 12.33 | 12.37 |
| Open Circuit Voltage Voc(V)  | 40.56 | 40.84 | 41.12 | 41.40 | 41.68 |
| Short Circuit Current Isc(A) | 12.97 | 13.02 | 13.07 | 13.12 | 13.16 |
| Module Efficiency (%)        | 21.4  | 21.7  | 21.9  | 22.2  | 22.5  |

\*STC (Standard Test Condition): Irradiance 1000W/m<sup>2</sup>, Cell Temperature 25°C, Air Mass 1.5  
 \*Measurement Tolerance (±3.0%)

Electrical data(NOCT)

|                               |       |       |       |       |       |
|-------------------------------|-------|-------|-------|-------|-------|
| Max. Power (W)                | 321   | 325   | 329   | 333   | 337   |
| Max. Power Voltage Vmp (V)    | 33.00 | 33.27 | 33.54 | 33.81 | 34.11 |
| Max. Power Current Imp (A)    | 9.73  | 9.77  | 9.81  | 9.85  | 9.88  |
| Open Circuit Voltage Voc (V)  | 38.95 | 39.22 | 39.49 | 39.76 | 40.03 |
| Short Circuit Current Isc (A) | 10.46 | 10.50 | 10.54 | 10.58 | 10.62 |

\*NOCT: Irradiance at 800W/m<sup>2</sup>, Ambient Temperature 20°C, Wind Speed 1m/s

Temperature Ratings

|   |        |
|---|--------|
| Power Tolerance (W)                     | 0~+5   |
| Temperature Coefficients of γPmp (%/°C) | -0.24  |
| Temperature Coefficients of βVoc (%/°C) | -0.22  |
| Temperature Coefficients of αIsc (%/°C) | +0.047 |
| Max. Over-Current (A)                   | 25     |
| Bifacial Factor (%)                     | ≥85    |

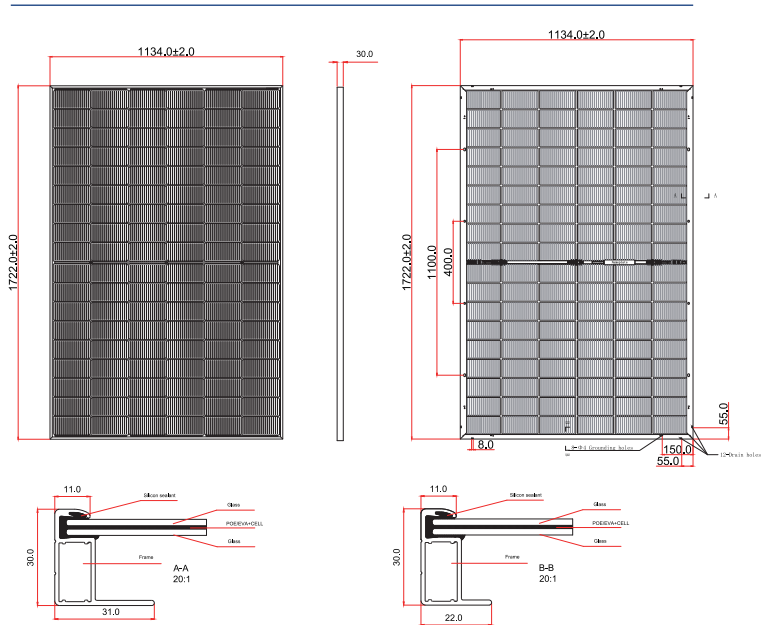
Mechanical Parameters

|                              |                              |
|------------------------------|------------------------------|
| Cell Type (mm)               | HJT 182 Half cell            |
| NO. of Cells and Connections | 108(6×18)                    |
| Dimensions(L*W*H) (mm)       | 1722*1134*30                 |
| Double AR Coated Glass (mm)  | 1.6+1.6                      |
| Cable Length (mm)            | 300,Length can be customized |
| Weight (kg)                  | 22                           |
| NO. of Diodes                | 3                            |
| Container 40'HQ (pcs)        | 36/936                       |

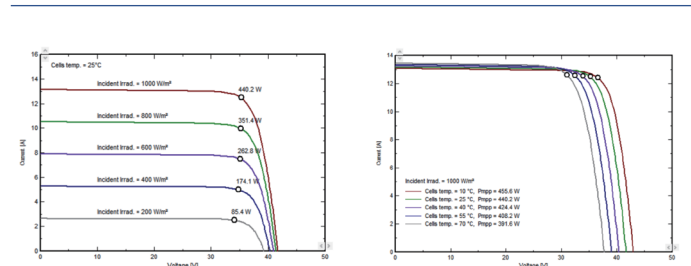
Working Condition

|                            |          |
|----------------------------|----------|
| Maximum System Voltage (V) | 1500V DC |
| Operating Temp (°C)        | -40~+85  |
| Max. Wind Load (Pa)        | 2400     |
| Max. Snow Load (Pa)        | 5400     |

Dimensions of PV Module(mm)



Characteristic Curves(440W)



Cannovation Low Carbon New Energy Technology Co. Ltd  
 No. 186, Innovation 2 Road, Xinbei District, Changzhou City,  
 Jiangsu Province, China, 213000

Phone: (+86) 0519-89886767-6017 / Mail: sales@cando-solar.com