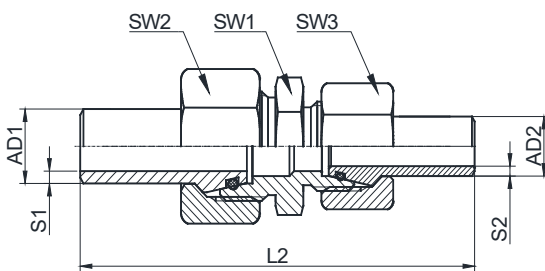


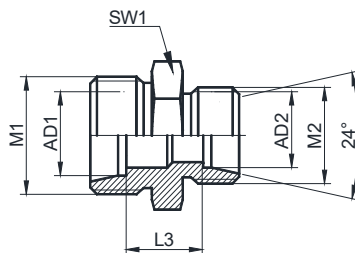
卡套式接头

订货示例: B-GR-L22/12-SS(耐腐蚀型)
E-GR-L22/12-SS(高压型)



焊接式接头

订货示例: W-GR-L22/12-SS



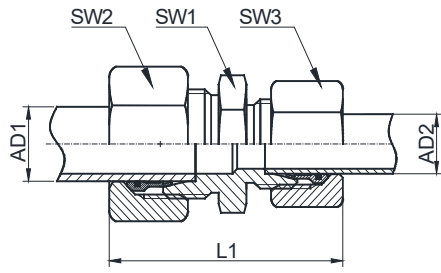
接头体

订货示例: GR-L22/12-SS

!!各种接头最大工作压力详见P11页

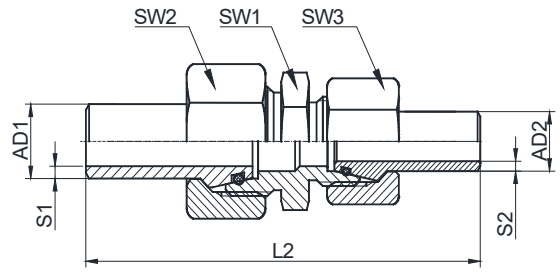
系列	卡套式	焊接式	接头体型号	AD1	S1	AD2	S2	L1	L2	L3	SW1	SW2	SW3	M1	M2	
轻系列 L	B-	E-	W-	GR-L08/06-SS	8	1.5	6	1.5	40.0	75.0	11.0	14	17	14	M14*1.5	M12*1.5
	B-	E-	W-	GR-L10/06-SS	10	1.5	6	1.5	41.0	76.5	12.0	17	19	14	M16*1.5	M12*1.5
	B-	E-	W-	GR-L10/08-SS			8	1.5	41.0	76.5	12.0	17	19	17		M14*1.5
	B-	E-	W-	GR-L12/06-SS	12	1.5	6	1.5	42.0	77.5	13.0	19	22	14	M18*1.5	M12*1.5
	B-	E-	W-	GR-L12/08-SS			8	1.5	42.0	77.5	13.0	19	22	17		M14*1.5
	B-	E-	W-	GR-L12/10-SS			10	1.5	43.0	79.0	14.0	19	22	19		M16*1.5
	B-	E-	W-	GR-L15/10-SS	15	2.0	10	1.5	46.0	84.5	15.0	24	27	19	M22*1.5	M16*1.5
	B-	E-	W-	GR-L15/12-SS			12	1.5	46.0	85.0	15.0	24	27	22		M18*1.5
	B-	E-	W-	GR-L18/10-SS	18	2.5	10	1.5	48.0	86.5	15.5	27	32	19	M26*1.5	M16*1.5
	B-	E-	W-	GR-L18/12-SS			12	1.5	48.0	87.0	15.5	27	32	22		M18*1.5
	B-	E-	W-	GR-L18/15-SS			15	2.0	51.0	91.0	16.5	27	32	27		M22*1.5
	B-	E-	W-	GR-L22/10-SS	22	3.0	10	1.5	49.0	89.0	17.0	32	36	19	M30*2	M16*1.5
	B-	E-	W-	GR-L22/12-SS			12	1.5	50.0	90.0	17.5	32	36	22		M18*1.5
	B-	E-	W-	GR-L22/15-SS			15	2.0	53.0	95.0	18.5	32	36	27		M22*1.5
	B-	E-	W-	GR-L22/18-SS			18	2.5	53.0	96.0	18.0	32	36	32		M26*1.5
	B-	E-	W-	GR-L28/18-SS	28	4.0	18	2.5	55.5	100.0	19.0	38	41	32	M36*2	M26*1.5
	B-	E-	W-	GR-L28/22-SS			22	3.0	57.5	104.0	21.0	38	41	36		M30*2
	B-	E-	W-	GR-L35/22-SS	35	4.0	22	3.0	62.0	110.0	21.0	46	50	36	M45*2	M30*2
B-	E-	W-	GR-L35/28-SS	28			4.0	63.0	113.0	21.0	46	50	41	M36*2		
B-	E-	W-	GR-L42/28-SS	42	5.0	28	4.0	65.5	115.0	22.5	55	60	41	M52*2	M36*2	
B-	E-	W-	GR-L42/35-SS			35	4.0	69.0	119.5	21.5	55	60	50		M45*2	

说明: 以上材质“-SS”为不锈钢 304,“-SL”为不锈钢 316L。密封材质标配 FPM。



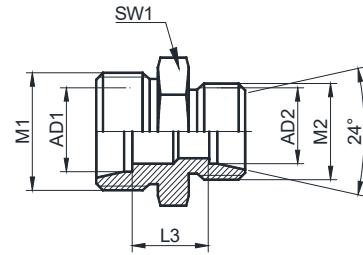
卡套式接头

订货示例: E-GR-S16/12-SL(高压型)



焊接式接头

订货示例: W-GR-S16/12-SL



接头体

订货示例: GR-S16/12-SL

!!各种接头最大工作压力详见 P11 页

系列	卡套式	焊接式	接头体型号	AD1	S1	AD2	S2	L1	L2	L3	SW1	SW2	SW3	M1	M2
重系列 S	E-	W-	GR-S08/06-SL	8	1.5	6	1.5	47.0	82.0	18.0	17	19	17	M16*1.5	M14*1.5
	E-	W-	GR-S10/06-SL	10	2.0	6	1.5	48.5	82.5	17.5	19	22	17	M18*1.5	M14*1.5
	E-	W-	GR-S10/08-SL			8	1.5	48.5	82.5	17.5	19	22	19		M16*1.5
	E-	W-	GR-S12/08-SL	12	2.0	8	1.5	50.0	85.0	19.5	22	24	19	M20*1.5	M16*1.5
	E-	W-	GR-S12/10-SL			10	2.0	51.0	86.0	19.0	22	24	22		M18*1.5
	E-	W-	GR-S14/10-SL	14	2.0	10	2.0	54.5	93.0	20.5	24	27	22	M22*1.5	M18*1.5
	E-	W-	GR-S14/12-SL			12	2.0	54.5	93.5	20.5	24	27	24		M20*1.5
	E-	W-	GR-S16/10-SL	16	2.5	10	2.0	56.0	93.5	20.0	27	30	22	M24*1.5	M18*1.5
	E-	W-	GR-S16/12-SL			12	2.0	55.5	94.0	20.0	27	30	24		M20*1.5
	E-	W-	GR-S16/14-SL			14	2.0	59.0	102.0	21.5	27	30	27		M22*1.5
	E-	W-	GR-S20/10-SL	20	3.0	10	2.0	58.0	101.0	21.5	32	36	22	M30*2	M18*1.5
	E-	W-	GR-S20/12-SL			12	2.0	58.0	102.0	22.0	32	36	24		M20*1.5
	E-	W-	GR-S20/16-SL			16	2.5	62.5	110.0	23.0	32	36	30		M24*1.5
	E-	W-	GR-S25/16-SL	25	4.0	16	2.5	70.0	118.5	25.5	41	46	30	M36*2	M24*1.5
	E-	W-	GR-S25/20-SL			20	3.0	70.5	124.0	25.5	41	46	36		M30*2
	E-	W-	GR-S30/20-SL	30	4.0	20	3.0	73.5	128.0	26.0	46	50	36	M42*2	M30*2
	E-	W-	GR-S30/25-SL			25	4.0	79.0	135.0	26.5	46	50	46		M36*2
	E-	W-	GR-S38/30-SL	38	5.0	30	4.0	88.0	146.0	27.5	55	60	50	M52*2	M42*2

说明: 以上材质均为不锈钢 316L。密封材质标配 FPM。