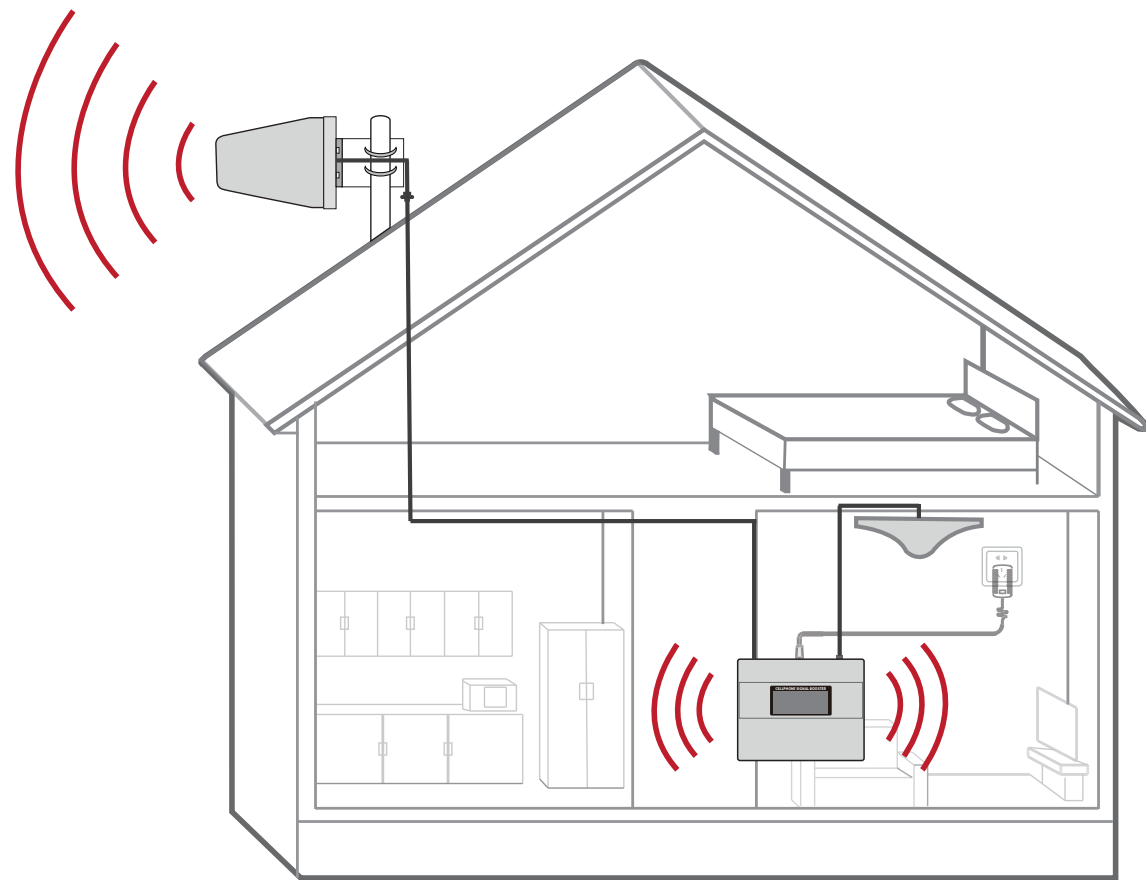
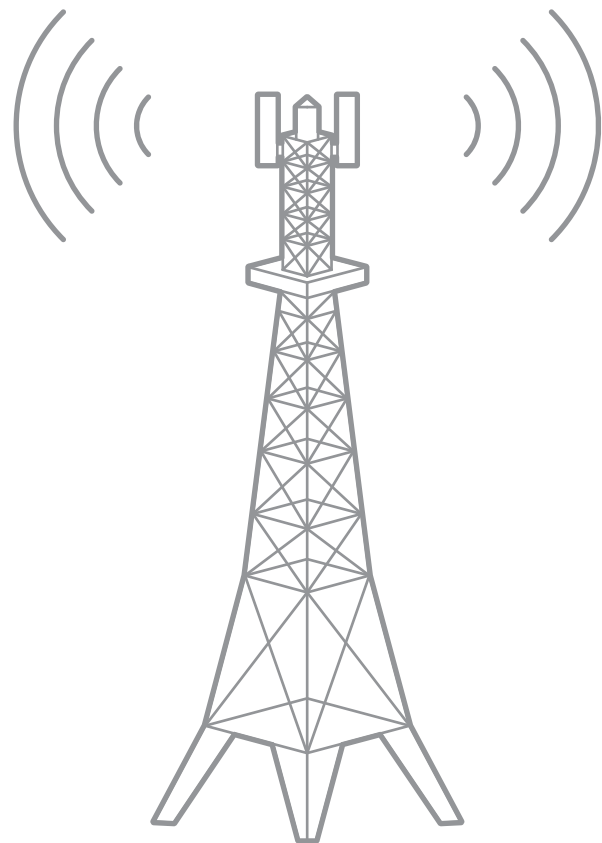


Plug & Play Kit Installation Guide



Plug & Play Kit
Installation Guide

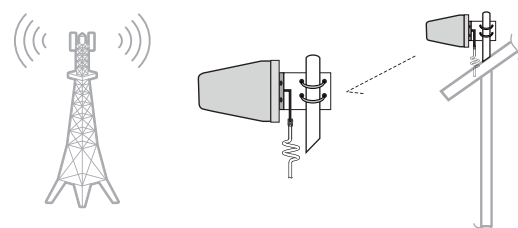
01



Find the Best Location for Outdoor Antenna

- 1) Walk around your house with your cell phone, search for the place where your phone gets the strongest signal reception.
- 2) Make a few phone calls there to check the call quality, if it is clear and stable, that will be an ideal position to place the outdoor antenna.

02



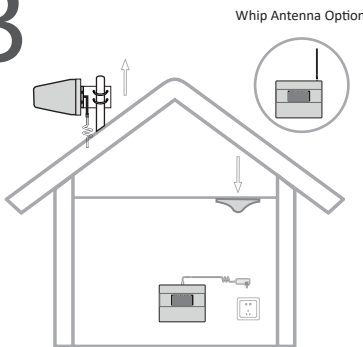
Install the Outdoor Antenna

Install the outdoor antenna on the roof above the location you found in Step 1. Make sure to point the antenna towards the direction where the cellular towers are. Connect the outdoor cable to the outdoor antenna, waterproof the connectors with tapes.

Note :

- 1) The outdoor antenna should be as far away as possible from where you plan to place the indoor antenna. Vertical separation of the antennas is more important than horizontal separation.
- 2) The cable length from outdoor antenna to repeater is 20 meters. Make sure you have sufficient cable length between the proposed locations.

03



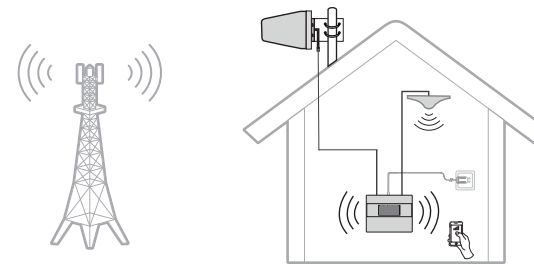
Install the Indoor Antenna and Cellular Repeater

Place the indoor antenna at where strong signal is needed most. The Mexican Hat Indoor Antenna needs to be installed on ceiling with the included screws. If your kit comes with Whip Antenna, it can be installed directly to "RF Out" port on repeater.

Note :

Keep enough separation between the outdoor antenna and indoor antenna. This could prevent the signal feedback from indoor antenna to outdoor antenna. Signal feedback between antennas could result in weak coverage of the repeater. (See Step 5 for Solutions)

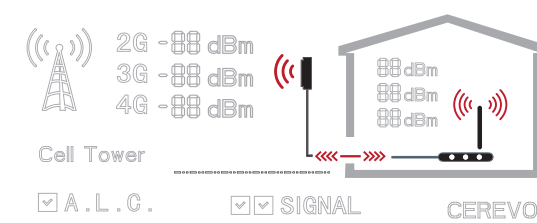
04



Connect the Cable and Indoor Repeater

Connect the outdoor antenna cable with "RF IN" port on the cellular repeater, and connect the indoor antenna cable with "RF Out" port on the repeater. Then Power on the repeater and check the coverage.

05



Read the Coverage Result and Optimize Coverage

Read the LCD screen, optimize and get the best coverage:

- 1) The Arrow Icon which represents isolation between outdoor antenna and indoor antenna is not flashing.
- 2) Get 2-3 signal bars on outdoor antenna sign and get 2-3 signal bars on indoor antenna sign.
- 3) The ideal input signal strength is -70 to -50dBm. The ideal output signal strength is from 5dBm to 20dBm.



Attention:

a) The signal bars indicates the outdoor and indoor signal strength. The stronger signal you get from outside, the better coverage you will have inside.

b) The double Arrow signs indicate separation between the outdoor antenna and the indoor antenna. Normal status is on. If the arrows flash, it means the separation is not enough and coverage result is not well. If you want to improve the coverage, please increase the distance between antennas. (Increase the vertical distance between antennas or use more brick walls as separation.)

c) If Arrows and Hyphen flash at the same time, it means the separation is too small to set up the repeater. You must increase the separation first and then re-power on the device, otherwise the repeater will not work.