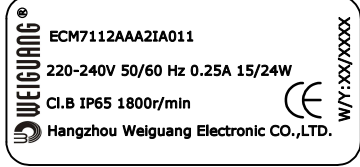


Electronically Commutated Motor
Hangzhou Weiguang Electronic CO.,LTD.

SPECIFICATION 规格说明

MOTOR	电机型式	Electronically Commutated Motor	ECM电机
MOTOR TYPE	电机型号	ECM7112AAA2IA011	
VOLTAGE	额定电压 (V)	220-240	
FREQUENCY	频率 (Hz)	50/60	
INPUT/OUTPUT POWER	输入/输出功率(W)	24/15	
CURRENT	电流 (A)	0.25	
SPEED	负载转速 (r/min)	1800	(500-2200)
FAN BLADES	负载风叶	60.360	
ROTATION	旋转方向	CCW (looking towards the shaft/从轴伸端视去逆时针方向)	
AIRFLOW DIRECTION	风向	Sucking or Blowing 通过配不同扇叶实现吹吸风	
INSULATION CLASS	绝缘等级	B (UL-F)	
TEMPERATURE RISE	温升	60K max (with load) 负载运行温升不超过60K	
PROTECTION CLASS	防护等级	IP 65	
OPERATING TYPE	工作定额	S1 连续工作制	
MOUNTING TYPE	安装方式	Horizontal or Vertical 垂直或水平安装	
AMBIENT TEMPERATURE	适用温度范围	-30°C ~ +50°C (UL-40°C ~ +50°C)	
BEARINGS	轴承型式	ball bearings 滚珠轴承	
ELECTRICAL CONNECTION	电源线	2×0.5mm ² lead wire (UL 20AWG) 500±40mm free length 线长500mm	
HI-POT TEST	耐压测试	3600V 1s 3600V历时1秒	
WEIGHT PER UNIT	单个电机净重	1.3kg	
PACKING	包装	72PCS/CTN 72台/箱	
APPROVALS	认证标记	CCC,CE,VDE,UL(F级),ATEX	

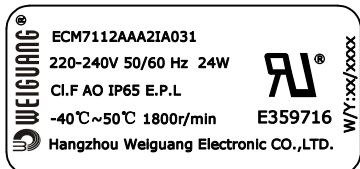
LABEL 标签



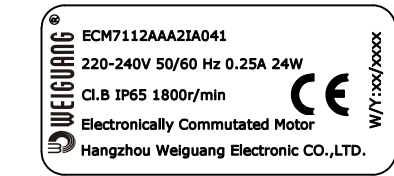
LABEL 标签



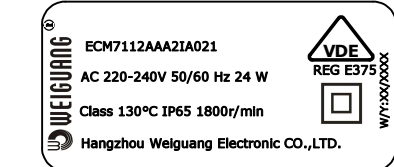
LABEL 标签



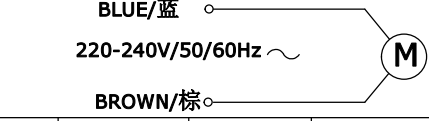
LABEL 标签



LABEL 标签

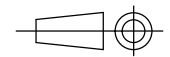


接线图 WIRE CONNECT



	SIGN	DATE
DRN.BY	YANSHIPENG	2024.1.27
CHD.BY		
ENG.BY		
APP.BY		

ECM7112AAA2IA011



SCALE:
SHEET: 1 of

REV.	DESCRIPTION	APPROVED	DATE