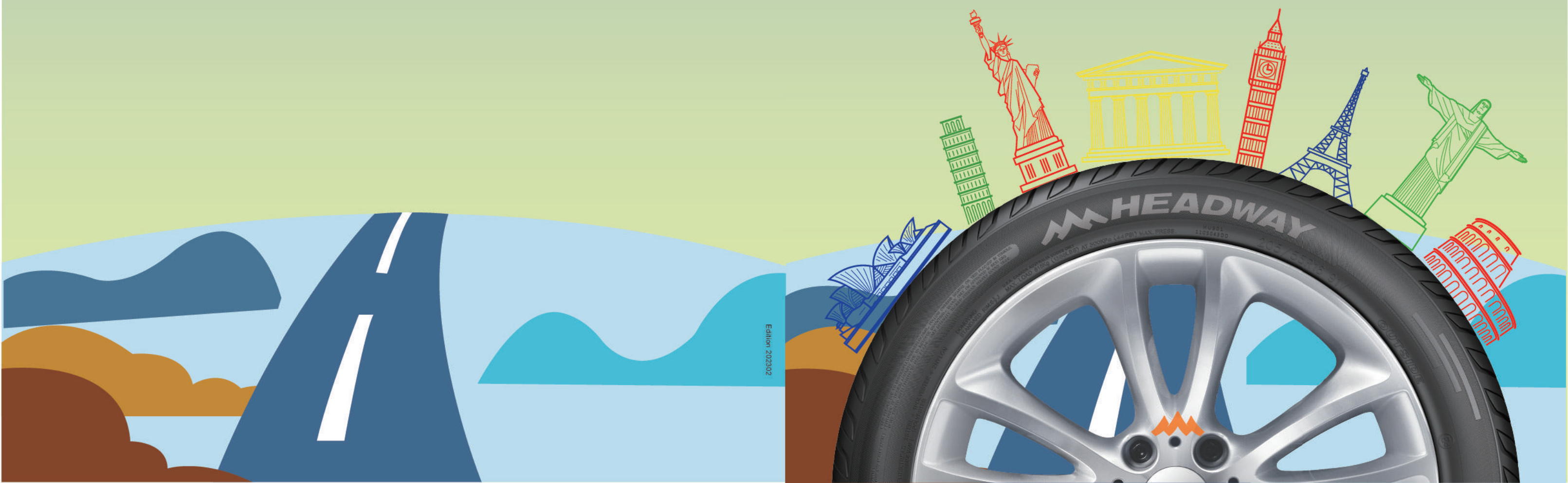


 **HEADWAY**
TIRE

HEADWAY
PCR CATALOGUE



CONTENTS

ADVANCED MANUFACTURING FACILITIES

PRODUCT GUIDE

ULTRA HIGH PERFORMANCE TIRE

HU901	02-04
HU905	05-06
HU907	07-08

HIGH PERFORMANCE TIRE

HH301	10-11
HH306	12-13
HH307	14-15

SUV, COMMERCIAL CAR TIRE

HR801	17-18
HR802	19-20
HR805	21
HR807	22

LIGHT TRUCK TIRE

HR601	24-25
HR602	26
HR607	27

ALL-TERRAIN & MUD TERRAIN TIRE

HR701	29-30
HM003	31

ALL-SEASON TIRE

PMS01	33-34
PMS02	35

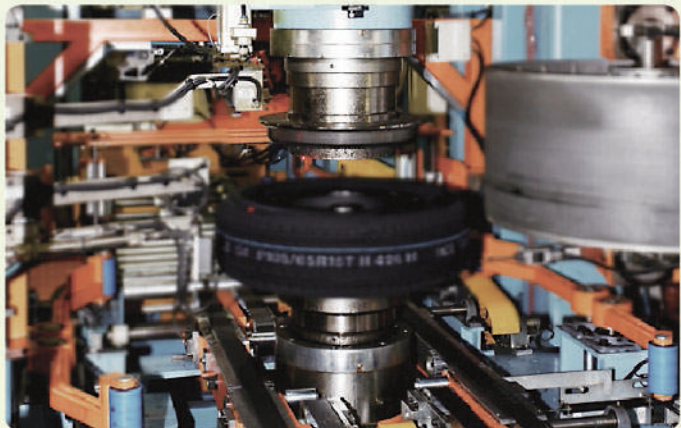
WINTER TIRE

HW501	37-38
HW505	39-40
HW507	41
HW508	42

TECHNICAL KNOWLEDGE

SPEED RATING

ADVANCED MANUFACTURING FACILITIES



With a professional R&D engineer team, Headway has the advanced testing and manufacturing facilities, scientific and optimized production management and the strict quality control system to guarantee the best performance of the products.

ULTRA HIGH PERFORMANCE TIRE



HU901

HU905

HU907

LIGHT TRUCK TIRE



HR601

HR602

HR607

HIGH PERFORMANCE TIRE



HH301

HH306

HH307

AT, MT TIRE



HR701

HM003

ALL SEASON



PMS01

PMS02

SUV, COMMERCIAL CAR TIRE



HR801

HR802

HR805

HR807

WINTER TIRE



HW501

HW505

HW507

HW508

PASSIONATE DRIVING

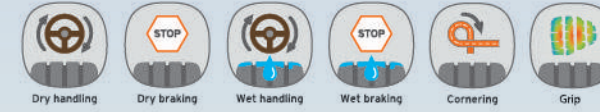
ULTRA HIGH PERFORMANCE TIRE

HU901/HU905/HU907



HU901

ULTRA HIGH PERFORMANCE TIRE



CHARACTERS

Big pattern design:

Greatly improving cornering stability at high speed.

Straight Lined central rib design:

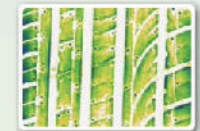
Maneuverability is highly improved.

Four main rib design:

Better avoiding slippery.

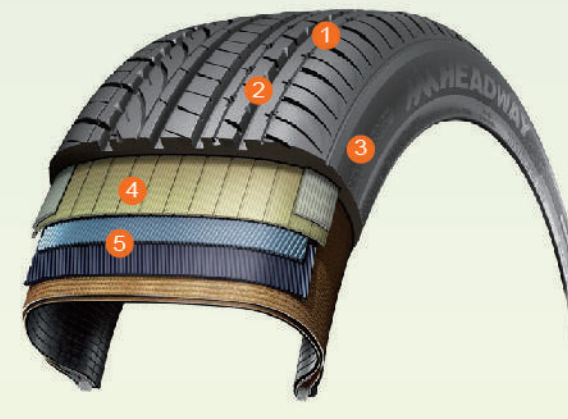
Asymmetric tread design:

Offers better sporting performance.



Best footprint shape simulated by computer offers excellent braking performance.

➔ **OUTSIDE**



- 1 Pitched pattern design reduces driving noise.
- 2 Special compound improves driving and gripping performance while maintaining excellent heat-resistant and wear-resistant ability.
- 3 Rim protection bar to protect the rim from any external damage.
- 4 All-new jointless protection layer improves the durability and braking performance, offers even landing and safe driving.
- 5 High strength steel belt reduces rolling resistance. To be more fuel saving and environmental while maintaining the driving safety.





HU905

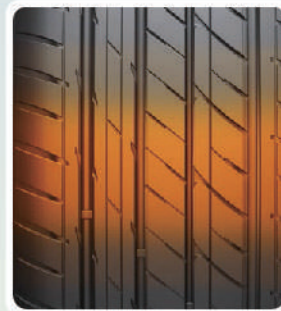
ULTRA HIGH PERFORMANCE TIRE



CHARACTERS



Shoulder Design
Variable pitch sequence design and continuous shoulder tread pattern blocks disperses road noise greatly.



Wide tread design
Provides the best ground contact area and improves the maneuverability of high-speed at corner, guarantees the stability during running.



Pattern Design
Asymmetric thread design provides excellent grip force in the crooked roads and good water drainage performance.



Four Wide Groove
Increases drainage performance and effectively avoids slippery.



- 1 Special rubber compound improves heat resistance, good abrasion resistance, driving performance and grip.
- 2 RIM protection, protect wheels from accidental damage.
- 3 Layer of protection uses new materials, as well as the seamless technology, improve braking and durability, tread the ground more evenly and improving handling safety.
- 4 High tensile steel belt, lower rolling resistance, increased handling safety and more fuel and protect the environment.



HU905

Rim	Size	LI/SS	Std. Rim	Section Width (mm)	Overall Diameter (mm)	Standard Pressure (Kpa/PSI)
16	195/55ZR16	87W	6J	201	620	300/44
	205/55ZR16	91W	6 1/2J	214	632	300/44
	205/60R16	92V	6J	209	652	300/44
17	205/45ZR17	88W XL	7 1/2J	206	616	340/50
	205/50ZR17	93Y XL	6 1/2J	214	638	340/50
	225/45ZR17	94Y XL	7 1/2J	225	634	340/50
	225/50ZR17	98Y XL	7 1/2J	233	658	340/50
	225/55ZR17	97Y	7 1/2J	233	680	300/44
	225/40ZR18	92Y XL	8J	230	637	340/50
18	225/45ZR18	95Y XL	7 1/2J	225	659	340/50
	245/40ZR18	97Y XL	8 1/2J	248	653	340/50
	245/45ZR18	100Y XL	8J	243	677	340/50
	245/50ZR18	100Y	7 1/2J	253	703	300/44
	255/35ZR18	94Y XL	9J	260	635	340/50
	255/40ZR18	95Y	9J	260	661	300/44
	275/40ZR18	99Y	9 1/2J	278	677	300/44
	275/40ZR18	103Y XL	9 1/2J	278	677	340/50
	315/30ZR18	98Y	11J	320	647	300/44
	245/45ZR19	102Y XL	8J	243	703	340/50
19	255/35ZR19	96Y XL	9J	260	661	340/50
	275/40ZR19	105Y XL	9 1/2J	278	703	340/50
	265/30ZR20	94Y XL	9 1/2J	271	668	340/50
20	275/30ZR20	97Y XL	9 1/2J	278	674	340/50
	285/30ZR20	99Y XL	10J	290	680	340/50
	295/30ZR20	101Y XL	10 1/2J	301	686	340/50
22	265/40ZR22	106W XL	9 1/2J	271	771	340/50
	305/40ZR22	110W	11J	313	803	300/44
	305/40ZR22	114W XL	11J	313	803	340/50
26	305/30ZR26	109W XL	11J	313	844	340/50



HU907

ULTRA HIGH PERFORMANCE TIRE



CHARACTERS



Tread pattern design with strengthening

Increase lateral ground area, provide strong control performance, ensuring driving safety.

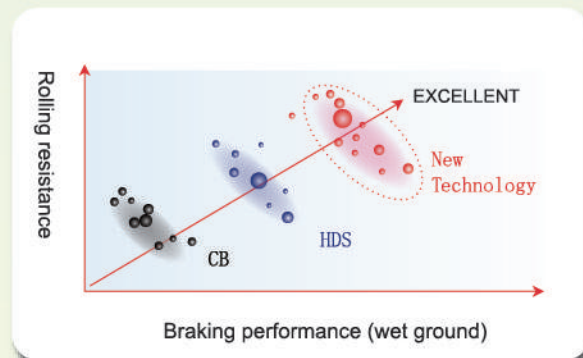


Four longitudinal grooves design
Improve safe driving on wet road.

Solid groove design
Provide better drainage performance and ensure safety.

High performance outer tread blocks

Groove angle than the inner design, improve the performance curve and prevent wear.



Addition of Silicon by adding reinforcing material to improve tire safety and durability.



HU907

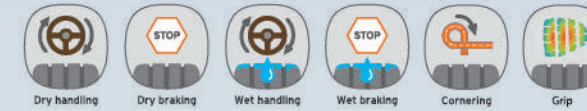
Rim	Size	LI/SS	Std. Rim	Section Width (mm)	Overall Diameter (mm)	Standard Pressure (Kpa/PSI)	
16	195/45R16	84V XL	6 1/2J	195	582	340/50	
	195/55R16	87V	6J	201	620	300/44	
	205/45R16	87W XL	7J	206	590	340/50	
	205/50R16	91W XL	6 1/2J	214	612	340/50	
	205/55R16	91V	6 1/2J	214	632	300/44	
	205/55R16	94W XL	6 1/2J	214	632	340/50	
	215/55R16	97W XL	7J	226	642	340/50	
	225/55R16	99W XL	7J	233	654	340/50	
	17	205/40R17	84W XL	7 1/2J	212	596	340/50
		205/45R17	88W XL	7J	206	616	340/50
205/50R17		93Y XL	6 1/2J	214	638	340/50	
205/55R17		95W XL	6 1/2J	214	658	340/50	
215/40R17		87W XL	7 1/2J	218	604	340/50	
215/45R17		91W XL	7J	213	626	340/50	
215/50R17		95W XL	7J	226	648	340/50	
225/45R17		94Y XL	7 1/2J	225	634	340/50	
225/50R17		98W XL	7J	233	658	340/50	
225/50R17		98Y XL	7J	233	658	340/50	
225/55R17		101W XL	7J	233	680	340/50	
235/45R17		97Y XL	8J	236	644	340/50	
245/45R17		99W XL	8J	243	652	340/50	
18		225/40R18	92Y XL	8J	230	637	340/50
	225/45R18	95W XL	7 1/2J	225	659	340/50	
	235/40R18	95W XL	8 1/2J	241	645	340/50	
	235/45R18	98Y XL	8J	236	669	340/50	
	245/40R18	97W XL	8 1/2J	248	653	340/50	
	245/45R18	100W XL	8J	243	677	340/50	
	19	225/35R19	88W XL	8J	230	641	340/50
		235/35R19	91W XL	8 1/2J	241	647	340/50
245/35R19		93W XL	8 1/2J	248	655	340/50	
255/50R19		107W XL	8J	265	739	340/50	
20	315/35R20	110W XL	11J	320	728	340/50	

LOW NOISE LEVEL HIGH PERFORMANCE TIRE

HH301 / HH306 / HH307



HH301 HIGH PERFORMANCE TIRE



CHARACTERS

Widened shoulder tread design increases contacting area, providing better driving stability and reliability.

Continuous straight center rib design provides optimized ground contacting area, guarantees better driving safety.



4 wide longitudinal grooves design greatly improves water drainage and driving stability on slippery roads.

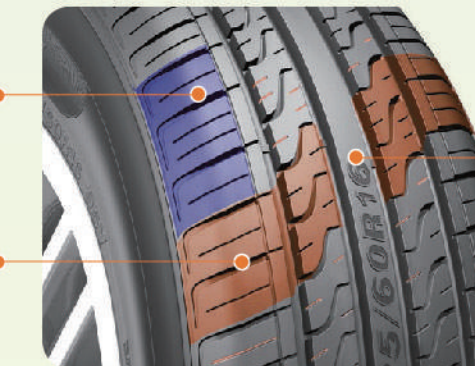


Lateral "S" shaped groove ensures better wet grip.

Excellent Low Noise Level

Optimized variable pitch sequence design disperses road noise and reduces vibration, driving comfort is highly improved.

Symmetrical pattern design and small notched design on the tread increases the friction between the tire and the ground, driving comfort is significantly improved.



Artistic Design
Size engraving in the central rib reveals the stylish design.



HH301

Rim	Size	L/SS	Std. Rim	Section Width (mm)	Overall Diameter (mm)	Standard Pressure (Kpa/PSI)
13	175/70R13	82T	5.00B	177	576	300/44
	175/70R13	82H	5.00B	177	576	300/44
	175/65R14	82T	5J	177	584	300/44
	175/65R14	82H	5J	177	584	300/44
	175/70R14	84T	5J	177	602	300/44
	175/70R14	84H	5J	177	602	300/44
14	175/70R14	88T XL	5J	177	602	340/50
	185/60R14	82T	5 1/2J	189	578	300/44
	185/60R14	82H	5 1/2J	189	578	300/44
	185/65R14	86T	5 1/2J	189	596	300/44
	185/65R14	86H	5 1/2J	189	596	300/44
	185/70R14	88T	5 1/2J	189	616	300/44
	185/70R14	88H	5 1/2J	189	616	300/44
	195/60R14	86H	6J	201	590	300/44
	195/70R14	91T	6J	201	630	300/44
	195/70R14	91H	6J	201	630	300/44
	205/60R14	88H	6J	209	602	300/44
	185/55R15	82V	6J	194	585	300/44
	185/60R15	88H XL	5 1/2J	189	603	340/50
	185/65R15	88H	5 1/2J	189	621	300/44
185/65R15	92T XL	5 1/2J	189	621	340/50	
15	195/50R15	82V	6J	201	577	300/44
	195/55R15	85V	6J	201	595	300/44
	195/60R15	88H	6J	201	615	300/44
	195/60R15	88V	6J	201	615	300/44
	195/65R15	91H	6J	201	635	300/44
	195/65R15	91V	6J	201	635	300/44
	205/60R15	91V	6J	209	627	300/44
	205/65R15	94V	6J	209	647	300/44
	205/70R15	96T	6J	209	669	300/44
	205/70R15	96H	6J	209	669	300/44
	215/65R15	100H XL	6 1/2J	221	661	340/50
	215/70R15	98T	6 1/2J	221	683	300/44
	215/70R15	98H	6 1/2J	221	683	300/44
	235/75R15	105T	6 1/2J	235	733	300/44
16	235/75R15	105S	6 1/2J	235	733	300/44
	195/60R16	89H	6J	201	640	300/44
	205/55R16	91V	6 1/2J	214	632	300/44
	205/55R16	94W XL	6 1/2J	214	632	340/50
	205/60R16	92H	6J	209	652	300/44
	205/60R16	92V	6J	209	652	300/44
	205/60R16	96V XL	6J	209	652	340/50
	215/55R16	93V	7J	226	642	300/44
	215/60R16	95H	6 1/2J	221	664	300/44
	215/60R16	95V	6 1/2J	221	664	300/44
	215/60R16	99V XL	6 1/2J	221	664	340/50
	215/65R16	98T	6 1/2J	221	686	300/44
	215/65R16	98H	6 1/2J	221	686	300/44
	225/60R16	98H	6 1/2J	228	676	300/44
17	235/60R16	100H	7J	240	688	300/44
	235/60R16	100V	7J	240	688	300/44
	235/60R16	104H XL	7J	240	688	340/50
	235/65R16	103H	7J	240	712	300/44
	225/60R17	99T	6 1/2J	228	702	300/44
	225/60R17	99H	6 1/2J	228	702	300/44



HH306

HIGH PERFORMANCE TIRE



CHARACTERS

1 Excellent Grip Performance

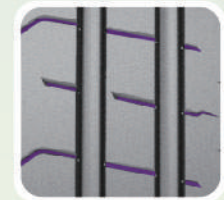
Asymmetrical pattern design ensures the grip of the tire when turning and improves the handling performance.

2 Optimizing the tread width of the driving surface and the high proportion of the upper and lower cambered surface improves the wet grip performance.

3 Low Noise and More Comfortable

Dual pitch design with optimal pitch order can effectively reduce the noise peak.

4 The staggered steel sheet on tread center and semi-enclosed shoulder design reduce the tire noise.



Rim	Size	L/SS	Std. Rim	Section Width (mm)	Overall Diameter (mm)	Standard Pressure (Kpa/PSI)
13	155/65R13	73T	4.50B	157	532	300/44
	155/70R13	75T	4.50B	157	548	300/44
	165/60R13	73T	5.00B	170	528	300/44
	165/65R13	77T	5.00B	170	544	300/44
	165/70R13	79T	5.00B	170	562	300/44
	175/60R13	77T	5.00B	177	540	300/44
	175/70R13	82H	5.00B	177	576	300/44
	175/65R13	77T	5.00B	176	589	300/44
	185/70R13	86T	5.00B	189	590	300/44
	155/65R14	75H	5J	170	554	300/44
	165/55R14	72T	5J	170	538	300/44
	165/60R14	75H	5J	170	554	300/44
	165/65R14	83T XL	5J	170	570	340/50
	14	165/70R14	81H	5J	170	588
175/65R14		82H	5J	177	584	300/44
175/70R14		84H	5J	177	602	300/44
175/75R14		86T	5J	176	615	300/44
185/60R14		82H	5 1/2J	189	578	300/44
185/65R14		86H	5 1/2J	189	596	300/44

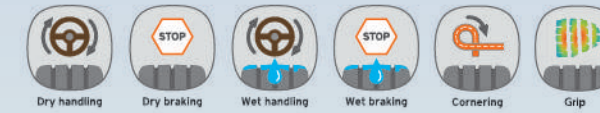


HH306

Rim	Size	LI/SS	Std. Rim	Section Width (mm)	Overall Diameter (mm)	Standard Pressure (Kpa/PSI)
14	185/70R14	88H	5 1/2J	189	616	300/44
	195/70R14	91H	6J	201	630	300/44
	205/70R14	95H	6J	209	644	300/44
	165/50R15	72T	5J	170	547	300/44
	175/65R15	84H	5J	177	609	300/44
15	185/55R15	82V	6J	194	585	300/44
	185/60R15	88H	5 1/2J	189	603	300/44
	185/65R15	88H	5 1/2J	189	621	300/44
	195/50R15	82V	6J	201	577	300/44
	195/55R15	85V	6J	201	577	300/44
	195/60R15	88H	6J	201	595	300/44
	195/65R15	91V	6J	201	635	300/44
	205/60R15	91V	6J	209	627	300/44
	205/65R15	94V	6J	209	647	300/44
	205/70R15	96H	6J	209	669	300/44
	195/55R16	91V	6J	201	620	340/50
	16	205/55R16	94V	6 1/2J	214	632
205/60R16		92V	6J	209	652	300/44
215/55ZR16		97W XL	7J	226	642	340/50
215/60R16		99V XL	6 1/2J	221	664	340/50
215/65R16		98H	6 1/2J	221	686	300/44
17	205/45ZR17	88W XL	7J	206	616	340/50
	205/50ZR17	93W XL	6 1/2J	214	638	340/50
	215/50ZR17	95W XL	7J	226	648	340/50
	215/55ZR17	98W XL	7J	226	668	340/50
	225/45ZR17	94W XL	7 1/2J	225	634	340/50
	225/50ZR17	98W XL	7J	233	658	340/50
18	225/40ZR18	92W XL	8J	230	637	340/50
	225/45ZR18	95W XL	7 1/2J	225	659	340/50
	235/40ZR18	95W XL	8 1/2J	241	645	340/50
	235/45ZR18	98W XL	8J	236	669	340/50
	245/40ZR18	97W XL	8 1/2J	248	653	340/50
	245/45ZR18	100W XL	8J	243	677	340/50



HH307
HIGH PERFORMANCE TIRE



CHARACTERS

- 1 Defected from the pattern design, reduce drive noise.
- 2 High tensile steel belt, lower rolling resistance, improving handling safety at the same time, more fuel-efficient, environmentally friendly.
- 3 Improve the driving stability and comfort by adopting jointless bead ring and reinforced bead filler.



- 4 Endless material layer, increased durability and brake so that more uniform tread ground, handling safety promotion.



Asymmetric tread and shoulder strengthening design provides good handling, ensuring driving safety.

- SINGLE-ORIENTED Y-SHAPED PATTERN DESIGN, PROVIDE A QUICK LINE OR HORIZONTAL DRAINAGE.



Wide linear gap and hole y-shaped design from the water, ensure the safety of slippery roads and driving in bad weather.





HH307

Rim	Size	LI/SS	Std. Rim	Section Width (mm)	Overall Diameter (mm)	Standard Pressure (Kpa/PSI)
13	155/65R13	73T	4.50B	157	532	300/44
	155/80R13	79T	4.50B	157	578	300/44
	165/65R13	77T	5.00B	170	544	300/44
	165/70R13	79T	5.00B	170	562	300/44
	175/70R13	82T	5.00B	177	576	300/44
	185/70R13	86T	5.50B	189	590	300/44
14	155/65R14	75T	4.50B	157	558	300/44
	165/60R14	75H	5.00B	170	554	300/44
	165/70R14	85T XL	5J	170	588	340/50
	175/65R14	82T	5J	177	584	300/44
	175/70R14	88H XL	5J	177	602	340/50
	185/65R14	86H	5 1/2J	189	596	300/44
	185/70R14	88T	5 1/2J	189	616	300/44
	195/60R14	86H	6J	201	590	300/44
	195/65R14	89H	6J	201	610	300/44
	195/70R14	91H	6J	201	630	300/44
15	185/60R15	88H XL	5 1/2J	189	603	340/50
	195/60R15	88H	6J	201	615	300/44
	195/60R15	88V	6J	201	615	300/44
	195/65R15	91H	6J	201	635	300/44
	195/65R15	95H XL	6J	201	635	340/50
	195/65R15	91V	6J	201	635	300/44
	205/70R15	96H	6J	209	669	300/44
16	215/70R15	98H	6 1/2J	221	683	300/44
	195/60R16	89H	6J	201	640	300/44
	205/55R16	91V	6 1/2J	214	632	300/44
	205/60R16	96V XL	6J	209	652	340/50
	215/60R16	99V XL	6 1/2J	221	664	340/50
	225/60R16	98H	6 1/2J	228	676	300/44

SUPER COMFORTABLE DRIVING
SUV, COMMERCIAL CAR TIRE

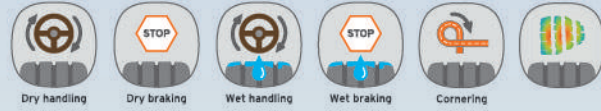
HR801/HR802/HR805/HR807





HR801

SUV, COMMERCIAL CAR TIRE



CHARACTERS

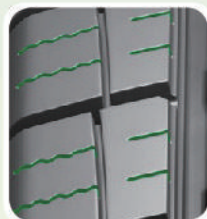
Excellent Handling – Optimized tread design ensuring the excellent handling performance under all-weather conditions.

Low Noise – Optimized 5 pitch tread design reduces the pattering noise and to improve the comfortness.



Optimized Pattern Design

Through 5 pitch design effectively reduces noise and improves comfort.



The excellent pattern design

Small notched design on tread patterns improves the durability of the tire and the grip performance on wet ground.



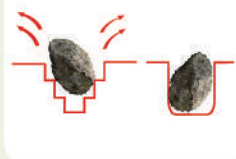
Excellent Drainage Performance

4 longitudinal grooves interconnecting with the edge grooves offers better drainage performance, safety driving under rainy weather is further guaranteed consequently.



“Pop-up” Design

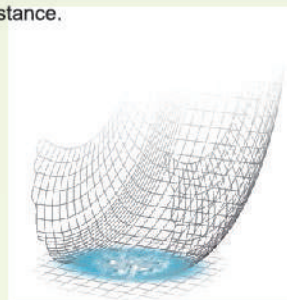
Stepped groove design avoids small stones embedded into tire patterns damaging the tire, better guarantees the driving stability.



- 1 Jointless and high-strength nylon covering layer.
- 2 High tension steel belt.
- 3 Dual carcass construction.
- 4 Jointless and high-strength bead steel wire.

Super Silica Compound

All new winter silica compounded tread provides super grip power on wet ground and less rolling resistance.



HR801

Rim	Size	LI/SS	Std. Rim	Section Width (mm)	Overall Diameter (mm)	Standard Pressure (Kpa/PSI)
15	215/75R15	100S	6J	216	703	300/44
	215/75R15	100H	6J	216	703	300/44
	225/70R15	100S	6 1/2J	228	697	300/44
	225/70R15	100H	6 1/2J	228	697	300/44
	235/75R15	105S	6 1/2J	235	733	300/44
16	235/75R15	105H	6 1/2J	235	733	300/44
	215/65R16	98H	6 1/2J	221	686	300/44
	265/70R16	112S	8J	272	778	300/44
	225/60R17	99H	6 1/2J	228	702	300/44
	225/65R17	102H	6 1/2J	228	724	300/44
17	235/55R17	99H	7 1/2J	245	690	300/44
	235/55R17	99S	7 1/2J	245	690	300/44
	235/65R17	104S	7J	240	738	300/44
	235/65R17	104H	7J	240	738	300/44
	235/65R17	108H XL	7J	240	738	340/50
	245/65R17	107T	7J	248	750	300/44
	265/70R17	115T	8J	272	804	300/44
	265/70R17	115H	8J	272	804	300/44



HR802

SUV, COMMERCIAL CAR TIRE



CHARACTERS

Excellent Water Drainage Performance

Big angle pattern block and four main ribs design ensure effective water drainage and safer driving on wet ground.



Widen "U" shape groove provides better water drainage performance.

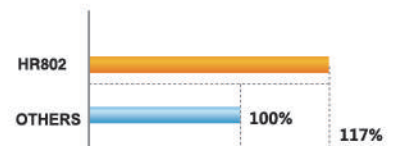
Safe Handling Performance



Solid shoulder pattern design provides accurate maneuverability on direction and braking.

Performance Test

Handling Performance On Dry Road



Remark: The test result is from HPR laboratory



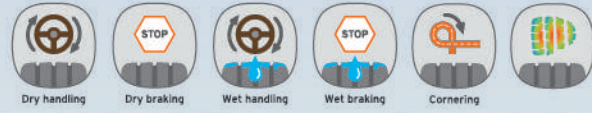
HR802

Rim	Size	LI/SS	Std. Rim	Section Width (mm)	Overall Diameter (mm)	Standard Pressure (Kpa/PSI)
15	P235/75R15	105H	6 1/2J	235	733	300/44
	LT235/75R15	104/101Q	6 1/2J	235	733	350/50
	P215/60R16	94T	6 1/2J	221	664	300/44
	P225/70R16	101H	6 1/2J	228	722	300/44
	P235/70R16	106H	7J	240	736	300/44
	P235/75R16	109T	6 1/2J	235	758	340/50
	P245/70R16	107H	7J	248	750	300/44
	P245/70R16	111H XL	7J	248	750	340/50
	P245/75R16	111H	7J	248	774	300/44
	P255/70R16	111H	7 1/2J	260	764	300/44
16	P265/70R16	112H	8J	272	778	300/44
	P265/75R16	116H	7 1/2J	267	804	300/44
	LT215/85R16	115/112Q	6J	216	772	550/80
	LT225/75R16	115/112Q	6J	223	744	550/80
	LT235/85R16	120/116Q	6 1/2J	235	806	550/80
	LT245/75R16	120/116Q	7J	248	774	550/80
	LT265/75R16	123/120Q	7 1/2J	267	804	550/80
	LT285/75R16	122/119Q	8J	286	834	450/65
	LT285/75R16	126/123Q	8J	286	834	550/80
	P245/65R17	107H	7J	248	750	300/44
17	P245/70R17	110H	7J	248	776	300/44
	P255/65R17	110H	7 1/2J	260	764	300/44
	P255/70R17	112H	7 1/2J	260	790	300/44
	P265/65R17	112H	8J	272	776	300/44
	P265/70R17	115H	8J	272	804	300/44
	P275/65R17	113T	8J	279	790	300/44
	LT245/75R17	121/118Q	7J	248	800	550/80
	LT265/70R17	112/109Q	8J	272	804	350/50
	LT265/70R17	121/118Q	8J	272	804	550/80
	LT285/70R17	116/113Q	8 1/2J	292	832	350/50
18	LT285/70R17	121/118Q	8 1/2J	292	832	550/80
	P265/60R18	109T	8J	272	775	300/44



HR805

SUV, COMMERCIAL CAR TIRE



CHARACTERS

4 longitudinal grooves design guarantees the safe maneuverability on the both dry and wet road.

Superior tread design provides excellent maneuverability and grip performance under all weather conditions.

Noise is dispersed by increased numbers of pitches and the optimized angle design.



Lateral pattern grooves on shoulder part ensures the best drainage performance.



HR807

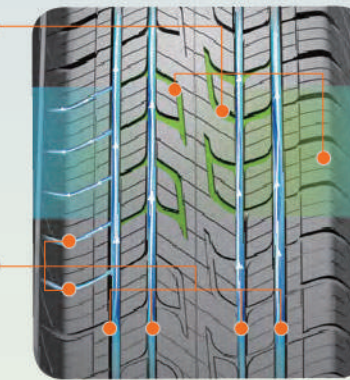
SUV, COMMERCIAL CAR TIRE



CHARACTERS

Bionic pattern design, improve drainage and wet skid resistance, ensuring driving safety.

4 drain tank and open shoulder pattern, makes the tire on a wet road surface played better drainage.



Provides the best ground where broadly linear pattern in the middle of the large shape to ensure optimal control of security.



Small Groove design, impact brought about by the tire and road surface noise to a minimum.

Design of pitch by 6 different designs, best arrangement effectively reduces the noise pattern, greatly improving the comfort.

Rim	Size	LI/SS	Std. Rim	Section Width (mm)	Overall Diameter (mm)	Standard Pressure (Kpa/PSI)
15	265/70R15	112H	8J	272	753	300/44
	215/65R16	98H	6 1/2J	221	686	300/44
	215/65R16	102XL	6 1/2J	221	686	340/50
	215/70R16	100H	6 1/2J	221	708	300/44
	215/70R16	104H XL	6 1/2J	221	708	340/50
16	225/70R16	103H	6 1/2J	228	722	300/44
	235/60R16	104V XL	7J	240	688	340/50
	235/70R16	106H	7J	240	736	300/44
	245/70R16	107H	7J	248	750	300/44
	245/70R16	107T	7J	248	750	300/44
	255/70R16	111T	7 1/2J	260	764	300/44
	265/70R16	112T	8J	272	778	300/44
	215/60R17	96H	6 1/2J	221	690	300/44
	225/65R17	102H	6 1/2J	228	724	300/44
	235/65R17	108H XL	7J	240	738	340/50
17	245/65R17	107H	7J	248	750	300/44
	245/70R17	110H	7J	248	776	300/44
	255/60R17	110H XL	7 1/2J	260	738	340/50
	255/65R17	114H XL	7 1/2J	260	764	340/50
	265/65R17	112H	8J	272	776	300/44
	265/65R17	116H XL	8J	272	776	340/50
	265/70R17	115T	8J	272	804	300/44
	275/65R17	119H XL	8J	279	790	340/50
	225/60R18	100H	6 1/2J	228	727	300/44
	235/50R18	101W XL	7 1/2J	245	693	340/50
18	235/60R18	103H	7J	240	739	300/44
	275/60R20	119H XL	8J	279	838	340/50

Rim	Size	LI/SS	Std. Rim	Section Width (mm)	Overall Diameter (mm)	Standard Pressure (Kpa/PSI)
15	235/75R15	105H	6 1/2J	235	733	300/44
	215/65R16	98H	6 1/2J	221	686	300/44
	215/70R16	100H	6 1/2J	221	708	300/44
16	225/70R16	103H	6 1/2J	228	722	300/44
	235/60R16	100H	7J	240	688	300/44
	225/65R17	102H	6 1/2J	228	724	300/44
17	235/65R17	108H XL	7J	240	738	340/50
	235/65R17	108V XL	7J	240	738	340/50
	265/65R17	112H	8J	272	776	300/44
	265/65R17	116H XL	8J	272	776	340/50
	235/60R18	107H XL	7J	240	739	340/50
18	235/60R18	107V XL	7J	240	739	340/50
	255/55R18	109V XL	8J	265	737	340/50
	255/55R18	109H XL	8J	265	737	340/50

YOUR ECONOMICAL SOLUTION FOR TRANSPORTATION

LIGHT TRUCK TIRE

HR601/HR602/HR607



HR601 LIGHT TRUCK TIRE



CHARACTERS

Economic & Durable: Widened tread design and special tread compound improves driving stability and wear-resistant performance.

Great Adaptability: Longitudinal groove design and lateral pattern design offers better grip ability on wet ground, applicable perfectly for rural transportation needs.

Travel Free: Three longitudinal deepened grooves provides outstanding drainage performance on wet ground.

Heavy Load & Anti-wear: Reinforced carcass and unique tread compound design guarantees heavy load ability.



"Pop-up" Design

Stepped groove design avoids small stones embedded into tire patterns.



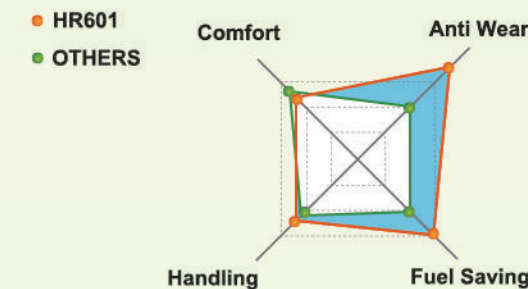
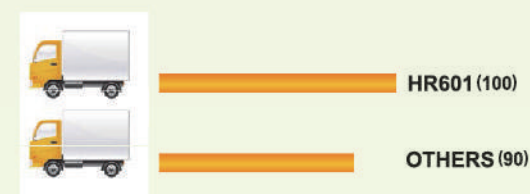
Enhanced Carcass Design
Reinforced carcass design guarantees heavy load ability.

Excellent Drainage Performance
"Z" shape groove design provides better drainage Performance, making the pattern more applicable for rural road conditions.

More Wear-Resistant & More Economic
Wide tread pattern design improves the wear-resistant performance. All new compound offers lower fuel consumption and guarantees rural driving safety.

Performance Test

Anti Wear Ratio Comparison



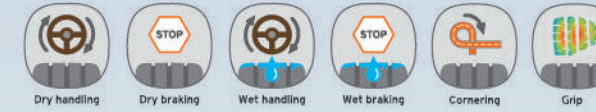


HR601

Rim	Size	L/SS	PR	Std. Rim	Section Width (mm)	Overall Diameter (mm)	Standard Pressure (Kpa/PSI)
13	155R13C	90/88P	8	4 1/2J	157	578	450/65
	155R13C	90/88R	8	4 1/2J	157	578	450/65
	165R13C	94/93P	8	4 1/2J	165	594	450/65
	165R13C	94/93Q	8	4 1/2J	165	594	450/65
	165/70R13C	88/86Q	6	5J	170	562	375/55
14	175/70R14C	95/93Q	6	5J	177	602	375/55
	175/70R14C	95/93T	6	5J	177	602	375/55
	185R14C	102/100Q	8	5 1/2J	189	652	450/65
	185R14C	102/100R	8	5 1/2J	189	652	450/65
	195R14C	106/104Q	8	5 1/2J	201	668	450/65
15	195R14C	106/104R	8	5 1/2J	201	668	450/65
	195/70R15C	104/102T	8	6J	201	655	450/65
	195/70R15C	93/90Q	6	6J	201	655	375/55
	195/70R15C	93/90R	6	6J	201	655	375/55
	195/70R15C	104/102R	8	6J	201	655	450/65
	195R15C	106/104Q	8	5 1/2J	196	693	450/65
	195R15C	106/104R	8	5 1/2J	196	693	450/65
	225/70R15C	100/97Q	6	6 1/2J	228	697	350/50
	225/70R15C	112/110R	8	6 1/2J	228	697	450/65
	225/70R15C	112/110T	8	6 1/2J	228	697	450/65
16	185/75R16C	100/97R	8	5J	184	684	450/65
	185/75R16C	104/102R	8	5J	184	684	480/70
	195/65R16C	104/102Q	8	6J	201	660	480/70
	195/65R16C	104/102R	8	6J	201	660	480/70
	195/75R16C	107/105R	8	5 1/2J	196	698	480/70
	205/65R16C	107/105T	8	6J	209	672	480/70
	205/65R16C	107/105R	8	6J	209	672	480/70
	205/75R16C	113/111R	10	6J	203	714	550/80
	205/75R16C	110/108R	8	6J	203	714	450/65
	215/65R16C	109/107R	8	6 1/2J	221	686	480/70
	215/65R16C	109/107T	8	6 1/2J	221	686	480/70
	215/75R16C	112/109R	10	6J	216	728	550/80
	215/75R16C	113/111R	8	6J	216	728	480/70
	225/65R16C	112/110Q	8	6 1/2J	228	698	480/70
	225/65R16C	112/110R	8	6 1/2J	228	698	480/70
235/65R16C	115/113R	8	7J	240	712	480/70	
235/65R16C	115/113T	8	7J	240	712	480/70	
235/65R16C	121/119R	10	7J	240	712	575/83	



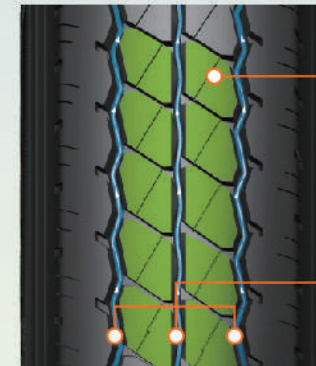
HR602
LIGHT TRUCK TIRE



CHARACTERS

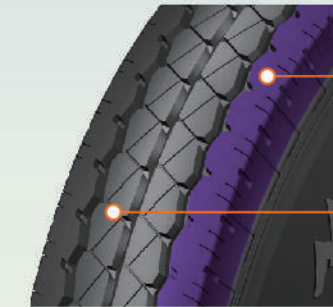
Safety: Three longitudinal grooves design and wide rib shaped pattern design enhances the water drainage performance and handling safety.

Extra long mileage: Enhanced tire body construction design and optimized compound offers extra long mileage. The small notched design on shoulder part reduces heat generation and guarantees the driving safety.



Wide rib shaped pattern design and the optimized notched design enhances the grip performance.

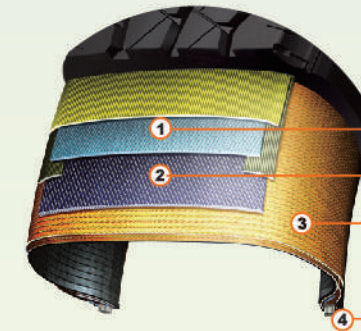
Drainage grooves increase the driving safety and handling performance on wet ground.



Enhanced tire body construction design guarantees the driving safety.

The small notched design on shoulder part reduces heat generation and noise, increases the applicability on all road conditions.

Strengthened Tire Body Construction



- ① Jointless and strengthened nylon cover belt.
- ② Higher tensility steel belt.
- ③ Duplex and high endurance tire body construction.
- ④ High tensility and jointless steel for bead toe area.

Rim	Size	L/SS	PR	Std. Rim	Section Width (mm)	Overall Diameter (mm)	Standard Pressure (Kpa/PSI)
16	6.50R16LT (TL)	107/102L	10	5.50F	185	750	560/81
	6.50R16LT(TT)	107/102L	10	5.50F	185	750	560/81
	6.50R16LT(TT)	107/102N	10	5.50F	185	750	560/81
	7.00R16LT (TL)	111/107L	10	5.50F	200	775	560/81
	7.00R16LT (TL)	115/110L	12	5.50F	200	775	670/97
	7.00R16LT(TT)	115/110L	12	5.50F	200	775	670/97
	7.00R16LT(TT)	115/110M	12	5.50F	200	775	670/97
	7.00R16LT(TT/TL)	115/110N	12	5.50F	200	775	670/97
	7.50R16LT (TL)	122/118L	14	6.00G	215	805	770/112
	7.50R16LT(TT)	122/118L	14	6.00G	215	805	770/112
	7.50R16LT(TT)	122/118M	14	6.00G	215	805	770/112
	7.50R16LT(TT/TL)	120/116N	12	6.00G	215	805	670/97

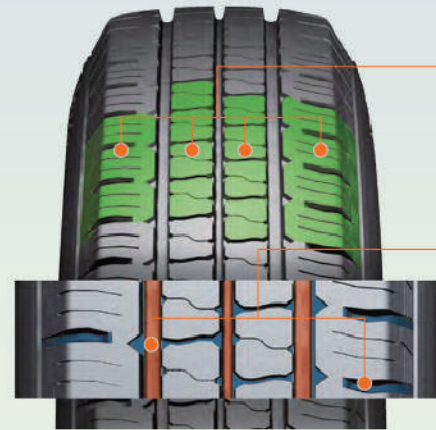


HR607

LIGHT TRUCK TIRE



CHARACTERS



- Strengthen the tire structure and special recipes, highlights the superior load bearing capacity and economy.
- Longitudinal Grooves and horizontal block patterns designed to improve adhesion of wetlands, perfect for urban and rural roads.



Three longitudinal deepened grooves provide better drainage.



- using high strength C/C 2 layer structure to ensure high load of tires.
- surface, ensures the tyre's safety and stability.
- strengthening bead ensured safety at high load.

Rim	Size	LI/SS	PR	Std. Rim	Section Width (mm)	Overall Diameter (mm)	Standard Pressure (Kpa/PSI)
14	175/65R14C	90/88T	6	5J	177	584	375/55
	195R15C	106/104R	8	5 1/2J	196	693	450/65
15	205/70R15C	106/104R	8	6J	209	669	450/65
	215/70R15C	109/107S	8	6 1/2J	221	683	450/65
	195/65R16C	104/102T	8	6J	201	660	480/70
16	195/75R16C	107/105T	8	5 1/2J	196	698	480/70
	205/65R16C	107/105T	8	6J	209	672	480/70
	215/65R16C	109/107T	8	6 1/2J	221	686	480/70
	235/65R16C	115/113R	8	7J	240	712	480/70

FREE MOVING WITH NO FEAR

ALL-TERRAIN & MUD TERRAIN TIRE

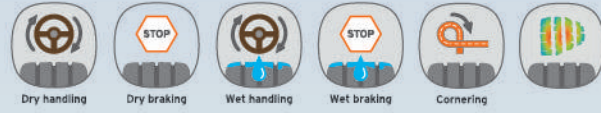
HR701/HM003





HR701

ALL-TERRAIN TIRE



CHARACTERS



Tread Pattern Design

Big tread pattern design increases the contacting area with the ground, offering excellent handling and braking performance on all terrain and all weather conditions.



Appearance Design

Exquisite sidewall pattern design represents the fashion and uniqueness of the tire.



Open Shoulder Design

Heat release ability is improved by open shoulder design, tire durability and driving safety is greatly enhanced.



"Pop-up" Design

Stepped groove design avoids small stones embedded into tire patterns damaging the tire, better guarantees the driving stability.



Durability

Deep waved grooves improve the durability of the tread and wet grip performance on all terrain road conditions.



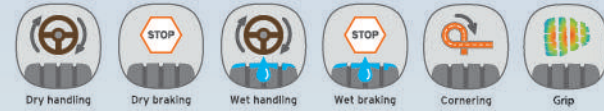
HR701

Rim	Size	LI/SS	PR	Std. Rim	Section Width (mm)	Overall Diameter (mm)	Standard Pressure (Kpa/PSI)
15	205/65R15	94H	4	6J	209	647	300/44
	205/70R15	96H	4	6J	209	669	300/44
	205/70R15	96T	4	6J	209	669	300/44
	31X10.50R15LT	109R	6	8 1/2J	268	775	350/50
	31X10.50R15LT	109S	6	8 1/2J	268	775	350/50
	31X10.50R15LT	109Q	6	8 1/2J	268	775	350/50
	LT215/75R15	100/97Q	6	6J	216	703	350/50
	LT235/75R15	104/101R	6	6 1/2J	235	733	350/50
	LT235/75R15	104/101Q	6	6 1/2J	235	733	350/50
16	LT225/75R16	115/112Q	10	6J	223	744	550/80
	235/85R16LT	120/116Q	10	6 1/2J	235	806	550/80
	LT265/75R16	123/120Q	10	7 1/2J	267	804	550/80
	LT285/75R16	122/119Q	8	8J	286	834	450/65
	LT245/75R16	120/116Q	10	7J	248	774	550/80
17	235/80R17LT	121/118Q	10	6 1/2J	235	808	550/80
	245/70R17LT	119/116Q	10	7J	248	776	550/80
	245/75R17LT	121/118Q	10	7J	248	800	550/80
	LT265/70R17	118/115Q	8	8J	272	804	450/65
	285/70R17LT	121/118Q	10	8 1/2J	292	832	550/80
18	LT275/65R18	123/120Q	10	8J	279	815	550/80



HM003

MUD TERRAIN TIRE



CHARACTERS

- The bionic tiger claw pattern provides strong grip on the mountain filed, desert, mud and other bad road conditions.
- Shield sidewall design with 6-7mm thicker than the ordinary tire, the tire damage probability is reduced by 80%.
- The up-and-down groove can throw out the mud easily and has better braking ability.
- The bump design in the shoulder groove can prevent stone and reduce the damage to the tire.
- The self-repairing technology ensures great puncture resistance.



Rim	Size	L/SS	Std. Rim	Section Width (mm)	Overall Diameter (mm)	Standard Pressure (Kpa)
15	215/75R15LT	106/103N	6J	216	703	450
	235/75R15LT	110/107N	6 2/1J	235	733	450
	30*9.50R15LT	104N	7 1/2J	240	750	350
	31*10.50R15LT	109N	8 1/2J	268	775	350
	33*12.50R15LT	108N	10J	318	826	350
	35*12.50R15LT	113Q	10J	318	877	350
16	225/75R16LT	110/107N	6J	223	744	450
	245/75R16LT	114/111N	7J	248	774	450
	265/70R16LT	117/114N	8J	272	778	450
	265/75R16LT	119/116N	7 1/2J	267	804	450
	285/75R16LT	122/119N	8J	286	834	450
17	245/70R17LT	114/110N	7J	248	776	450
	265/65R17LT	120/117N	8J	272	776	550
	265/70R17LT	118/115N	8J	272	804	450
	33*12.50R17	120Q	10J	318	826	450
	35*12.50R17	121Q	10J	318	877	350
	37*13.50R17LT	121Q/131Q	11J	345	928	350
18	235/60R18	103N	7J	240	739	380
	33*12.50R18LT	118Q	10J	318	826	450
	35*12.50R18LT	123Q	10J	318	877	450
20	33*12.50R20LT	114Q	10J	318	826	450
	35*12.50R20LT	121Q	10J	318	877	450
	37*13.50R20LT	127Q	10J	318	928	450
	33*12.50R22LT	109Q	10J	318	826	450
22	35*12.50R22LT	117Q	10J	318	877	450
	37*13.50R22LT	123Q	11J	345	928	450
	37*13.50R26LT	117Q	11J	345	928	450

WORRY-FREE COMPANIONSHIP THROUGHOUT THE YEAR ALL SEASON TIRE

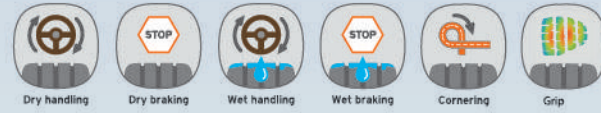
PMS01/PMS02





PMS01

ALL SEASON TIRE



CHARACTERS



Design of single guide pattern groove provide excellent high speed handling performance in straight line.



Design of thin sipes pattern on shoulder provide quiet and comfortable ride experience.

The capillary groove structure provides better performance of braking and handling to ensure the safety of the four seasons.



Multi-chip mold without porosity design for nice appearance.



Rim	Size	LI/SS	Std. Rim	Section Width (mm)	Overall Diameter (mm)	Standard Pressure (Kpa/PSI)
13	155/70R13	75T	4.50B	157	548	300/44
	155/80R13	79T	4.50B	157	578	300/44
	165/70R13	79T	5.00B	170	562	300/44
	175/70R13	82T	5.00B	177	576	300/44
14	155/65R14	75T	4 1/2J	157	558	300/44
	165/60R14	75T	5J	170	554	300/44
	165/65R14	79T	5J	170	570	300/44
	165/70R14	81T	5J	170	588	300/44
	175/65R14	82T	5J	177	584	300/44
	175/70R14	88T XL	5J	177	602	340/50
15	185/60R14	82T	5 1/2J	189	578	300/44
	185/65R14	86T	5 1/2J	189	596	300/44
	165/60R15	77T	5J	170	579	300/44
	175/65R15	84T	5J	177	609	300/44
	185/55R15	82H	6J	194	585	300/44
	185/60R15	88H XL	5 1/2J	189	603	340/50
	185/65R15	88H	5 1/2J	189	621	300/44
	195/50R15	86H XL	6J	201	577	340/50
15	195/55R15	85H	6J	201	595	300/44
	195/60R15	88H	6J	201	615	300/44
	195/65R15	91V	6J	201	635	300/44



PMS 01

Rim	Size	LI/SS	Std. Rim	Section Width (mm)	Overall Diameter (mm)	Standard Pressure (Kpa/PSI)
15	205/60R15	91H	6J	209	627	300/44
	205/65R15	94H	6J	209	647	300/44
	195/55R16	91H XL	6J	201	620	340/50
	205/55R16	94V XL	6 1/2J	214	632	340/50
16	205/60R16	96H XL	6J	209	652	340/50
	215/55R16	97V XL	7J	226	642	340/50
	215/60R16	99H XL	6 1/2J	221	664	340/50
	215/65R16	98H	6 1/2J	221	686	300/44
	215/70R16	104H XL	6 1/2J	221	708	340/50
	225/55R16	95H	7J	233	654	300/44
	225/60R16	98H	6 1/2J	228	676	300/44
	235/70R16	106H	7J	240	736	300/44
	205/45ZR17	88W	7J	206	616	340/50
	205/50R17	93V XL	6 1/2J	214	638	340/50
	205/55R17	95V XL	6 1/2J	214	658	340/50
	215/55R17	98H XL	7J	226	668	340/50
17	215/60R17	96H	6 1/2J	221	690	300/44
	225/45ZR17	94W XL	7 1/2J	225	634	340/50
	225/50R17	98V XL	7J	233	658	340/50
	225/55R17	101H XL	7J	233	680	340/50
	225/60R17	99V	6 1/2J	228	702	300/44
	225/65R17	102H	6 1/2J	228	724	300/44
	235/55R17	103H XL	7 1/2J	245	690	340/50
	245/65R17	107T	7J	248	750	300/44
18	225/40ZR18	92W XL	8J	230	637	340/50
	225/45ZR18	95W XL	7 1/2J	225	659	340/50
	235/45ZR18	98W XL	8J	236	669	340/50
	235/50R18	101V XL	7 1/2J	245	693	340/50
	235/60R18	107H XL	7J	240	739	340/50
	245/40ZR18	97W XL	8 1/2J	248	653	340/50
	245/45ZR18	100W XL	8J	243	677	340/50
	275/65R18	116T	8J	279	815	300/44
	225/35ZR19	88W XL	8J	230	641	340/50
	19	225/45ZR19	96W XL	7 1/2J	225	685
235/35ZR19		91W XL	8 1/2J	241	647	340/50
235/55ZR19		105W XL	7 1/2J	245	741	340/50
20	295/30ZR20	103W XL	10 1/2J	301	737	340/50



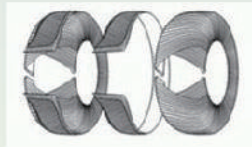
PMS02

ALL SEASON TIRE



CHARACTERS

Zigzag traversal pattern on tread edge helps the tire perform stronger traction in snow.



Stronger carcass construction helps effectively improve endurance and loading performance.



Acute angle pattern on shoulder helps obviously improve the handling performance of four seasons.

Open grooves are designed to provide excellent self-cleaning capability and outstanding traction.

Rim	Size	LI/SS	Std. Rim	Section Width (mm)	Overall Diameter (mm)	Standard Pressure (Kpa/PSI)
16	235/65R16C	115/113R	7J	242	708	450/65
	225/65R16C	111/108R	6 1/2J	234	694	550/80
	215/75R16C	113/111R	6J	217	724	450/65
	205/65R16C	107/105T	6J	210	668	450/65
	195/75R16C	107/105R	5 1/2J	196	694	450/65
15	225/70R15C	112/109R	6 1/2J	236	694	550/80
	215/70R15C	109/107R	6 1/2J	222	679	450/65
	215/65R15C	107/103R	6J	228	657	550/80
	195/70R15C	104/101R	6 1/2J	209	651	550/80

SAFE CHOICE FOR WINTER

WINTER TIRE

HW501/HW505/HW507/HW508





HW501

STUDDABLE WINTER TIRE

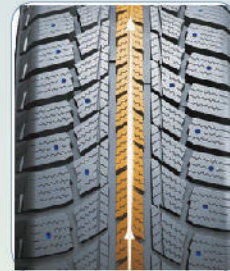


CHARACTERS



Tread Pattern Design

Perfect braking & grip power on snow/ice road conditions provided by directional pattern and studdable design.



Super Braking Power

6% widened tread design offers even landing area, improves braking and wear resistant performance on snow/ice terrain.



Excellent Drainage Performance

"V" groove design delivers perfect water drainage performance when snow melts, ensuring safer and more stable driving.



Optimized tire body construction design guarantees the driving safety.

1. Jointless and high-strength nylon covering layer.
2. High tension steel belt.
3. Dual carcass construction.
4. Jointless and high-strength bead steel wire.



HW501

Rim	Size	LI/SS	Std. Rim	Section Width (mm)	Overall Diameter (mm)	Standard Pressure (Kpa/PSI)
13	155/80R13	79T	4.50B	157	578	300/44
	175/70R13	82T	5.00B	177	576	300/44
	165/60R14	75T	5J	170	554	300/44
	175/65R14	82T	5J	177	584	300/44
	175/70R14	84T	5J	177	602	300/44
14	175/70R14	88T XL	5J	177	602	340/50
	185/60R14	82T	5 1/2J	189	578	300/44
	185/60R14(S)	82T	5 1/2J	189	578	300/44
	185/65R14	86T	5 1/2J	189	596	300/44
	185/70R14	88T	5 1/2J	189	616	300/44
	195/70R14	91T	6J	201	630	300/44
	185/60R15	84T	5 1/2J	189	603	300/44
	185/65R15	88T	5 1/2J	189	621	300/44
	185/65R15(S)	88T	5 1/2J	189	621	300/44
	195/55R15	85T	6J	201	595	300/44
15	195/60R15	88T	6J	201	615	300/44
	195/65R15	91T	6J	201	635	300/44
	195/65R15	91H	6J	201	635	300/44
	195/65R15(S)	91H	6J	201	635	300/44
	205/60R15	91T	6J	209	627	300/44
	205/70R15	96T	6J	209	669	300/44
	215/60R15	94T	6 1/2J	221	639	300/44
	215/70R15	98T	6 1/2J	221	683	300/44
	195/60R16	89T	6J	201	640	300/44
	205/55R16	91T	6 1/2J	214	632	300/44
16	205/55R16(S)	94H XL	6 1/2J	214	632	340/50
	205/60R16	92T	6J	209	652	300/44
	215/55R16	93T	7J	226	642	300/44
	215/65R16	98T	6 1/2J	221	686	300/44
	225/50R16	92T	7J	233	632	300/44
	225/55R16	95T	7J	233	654	300/44
	225/60R16	98T	6 1/2J	228	676	300/44



HW505



HIGH PERFORMANCE WINTER TIRE



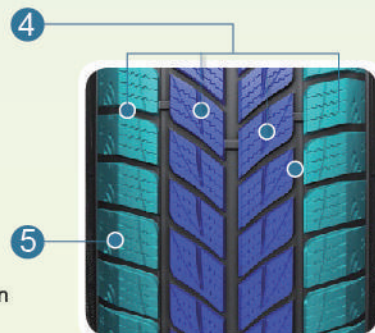
CHARACTERS



- 1 Drainage performance on ice and snow road**
 Wide and straight longitudinal groove design improves performance on wet ground.
- 2 Handling performance on ice and snow road**
 Interval arranged lateral groove design in carter part increase grip ability on snow/ice terrain, guarantees safe handling performance.
- 3 Combination of safety and fasion design**
 The fine snow-shaped design on the shoulder part combines the fasionable appearance and the driving safety by increasing the friction froce from the shoulder area.

Breaking performance on ice and snow road

Special studless tread compound greatly improves braking performance in winter.



Low noise performance on ice and snow road

Optimized pitch arrangement design lower the noise to minimum level.



HW505

Rim	Size	LI/SS	Std. Rim	Section Width (mm)	Overall Diameter (mm)	Standard Pressure (Kpa/PSI)
	205/50R17	93T XL	6 1/2J	214	638	340/50
	205/50R17	93H XL	6 1/2J	214	638	340/50
	205/50R17	93V XL	6 1/2J	214	638	340/50
	215/45R17	91T XL	7J	213	626	340/50
	215/45R17	91V XL	7J	213	626	340/50
	215/45R17	91H XL	7J	213	626	340/50
	215/50R17	91H	7J	226	648	300/44
	225/45R17	94T XL	7 1/2J	225	634	340/50
	225/45R17	94H XL	7 1/2J	225	634	340/50
	225/45R17	94V XL	7 1/2J	225	634	340/50
	225/45R17(D)	94H XL	7 1/2J	225	634	340/50
	225/50R17	94T	7J	233	658	300/44
17	225/50R17	94H	7J	233	658	300/44
	225/50R17	98H XL	7J	233	658	340/50
	225/50R17	98V XL	7J	233	658	340/50
	225/55R17	97T	7J	233	680	300/44
	225/55R17	97H	7J	233	680	300/44
	225/55R17	101H XL	7J	233	680	340/50
	225/55R17	101V XL	7J	233	680	340/50
	235/45R17	97T XL	8J	236	644	340/50
	235/45R17	97H XL	8J	236	644	340/50
	235/45R17	97V XL	8J	236	644	340/50
	235/55R17	99T	7 1/2J	245	690	300/44
	235/55R17	99H	7 1/2J	245	690	300/44
	235/55R17	103H XL	7 1/2J	245	690	340/50
	235/55R17	103V XL	7 1/2J	245	690	340/50
	255/45R17	102T XL	8 1/2J	255	662	340/50
	255/45R17	102V XL	8 1/2J	255	662	340/50
	215/55R18	95H	7J	226	693	300/44
	225/45R18	95T XL	7 1/2J	225	659	340/50
	225/45R18	95V XL	7 1/2J	225	659	340/50
	235/50R18	97H	7 1/2J	245	693	300/44
	235/55R18	104T XL	7 1/2J	245	715	340/50
18	235/55R18	104V XL	7 1/2J	245	715	340/50
	235/55R18	104W XL	7 1/2J	245	715	340/50
	245/40R18	93H	8 1/2J	248	653	300/44
	245/45R18	96T	8J	243	677	300/44
	245/45R18	100T XL	8J	243	677	340/50
	245/45R18	100V XL	8J	243	677	340/50
	255/55R18	109T XL	8J	265	737	340/50
	255/55R18	109V XL	8J	265	737	340/50
	235/50R19	99H	7 1/2J	245	719	300/44
	235/55R19	105T XL	7 1/2J	245	741	340/50
	235/55R19	105V XL	7 1/2J	245	741	340/50
19	255/45R19	100H	8 1/2J	255	713	300/44
	255/50R19	107T XL	8J	265	739	340/50
	255/50R19	107H XL	8J	265	739	340/50
	255/50R19	107V XL	8J	265	739	340/50
	255/55R19	107H	8J	265	763	300/44
	235/55R20	102H	7 1/2J	245	766	300/44
	255/45R20	105T XL	8 1/2J	255	738	340/50
	255/45R20	105V XL	8 1/2J	255	738	340/50
	255/50R20	109H XL	8J	265	764	340/50
20	255/55R20	107H	8J	265	788	300/44
	275/40R20	102T	9 1/2J	278	728	300/44
	275/40R20	106V XL	9 1/2J	278	728	340/50
	275/45R20	110H XL	9J	273	756	340/50
	275/45R20	110V XL	9J	273	756	340/50
	315/35R20	106T	11J	320	728	300/44



HW507

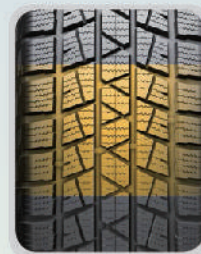
WINTER SUV TIRE



CHARACTERS



Central rib pattern and multi-sipe design makes excellent braking and steering performance on snow/ice terrain.



Wide tread design increase the contacting area with the ground, guarantees the driving safety on snow/ice terrain.



Combination of longitudinal and lateral grooves to ensure the best water drainage performance.



Excellent pitch arrangement and special tread compound, disperses the noise and makes driving more comfortable.

Rim	Size	LI/SS	Std. Rim	Section Width (mm)	Overall Diameter (mm)	Standard Pressure (Kpa/PSI)
15	235/75R15	109Q XL	6 1/2J	235	733	340/50
	215/65R16	98T	6 1/2J	221	686	300/44
16	215/70R16	100Q	6 1/2J	221	708	300/44
	215/70R16	100H	6 1/2J	221	708	300/44
	235/70R16	106Q	7J	240	736	300/44
	235/70R16	106T	7J	240	736	300/44
	265/70R16	112Q	8J	272	778	300/44
	265/70R16	112T	8J	272	778	300/44
17	215/60R17	96T	6 1/2J	221	690	300/44
	215/60R17	96H	6 1/2J	221	690	300/44
	225/60R17	99T	6 1/2J	228	702	300/44
	225/65R17	102T	6 1/2J	228	724	300/44
	225/65R17	102H	6 1/2J	228	724	300/44
	235/65R17	108T XL	7J	240	738	340/50
	235/65R17	108H XL	7J	240	738	340/50
	265/65R17	112Q	8J	272	776	300/44
	265/65R17	112H	8J	272	776	300/44
	235/60R18	103T	7J	240	739	300/44
18	235/60R18	107T XL	7J	240	739	340/50
	235/60R18	107H XL	7J	240	739	340/50



HW508

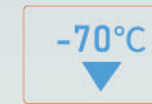
HIGH PERFORMANCE WINTER TIRE



CHARACTERS

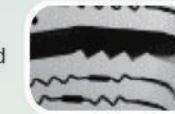


The unique "V" pattern design of central rib improves the stability of straight driving on the snow and ice road, ensuring the safety of driving.

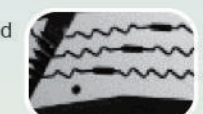


Application of ultra-low temperature compound helps ensure the softness of tire and driving safety even in -70°C condition.

The zigzag design of tire edge can effectively remove the ice water film and improve the stability.

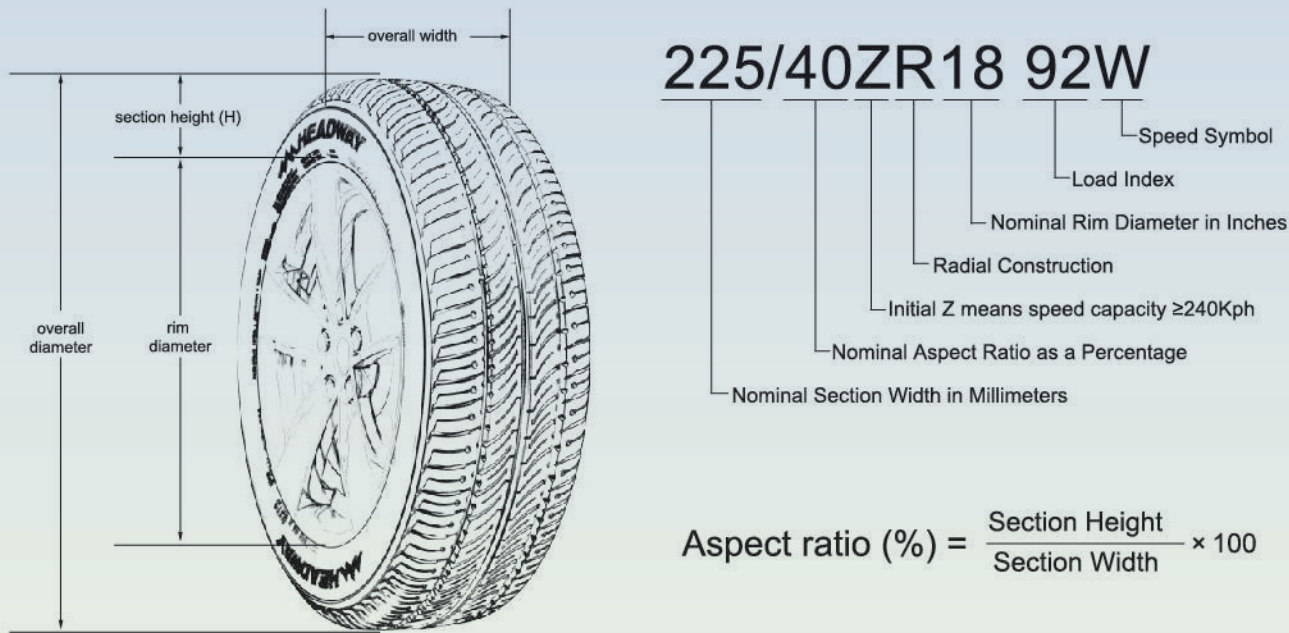


Water suction bag is designed to store and evacuate the water rapidly so as to enhance the ice and snow performance.



Rim	Size	LI/SS	Std. Rim	Section Width (mm)	Overall Diameter (mm)	Standard Pressure (Kpa/PSI)
13	155/70R13	75T	4.50B	157	548	300/44
	155/80R13	79T	4.50B	157	578	300/44
	165/70R13	79T	5.00B	177	562	300/44
	175/70R13	82T	5.00B	177	576	300/44
	155/65R14	75T	4 1/2J	157	558	300/44
14	165/65R14	79T	5J	170	570	300/44
	165/70R14	81T	5J	170	588	300/44
	175/65R14	82T	5J	177	584	300/44
	175/70R14	84T	5J	177	602	300/44
	185/60R14	82T	5 1/2J	189	578	300/44
	185/65R14	86T	5 1/2J	189	596	300/44
	175/65R15	84T	5J	177	609	300/44
15	185/55R15	82T	6J	194	585	300/44
	185/60R15	84T	5 1/2J	189	603	300/44
	185/65R15	88T	5 1/2J	189	621	300/44
	195/55R15	85T	6J	201	595	300/44
	195/60R15	88T	6J	201	615	300/44
	195/65R15	91T	6J	201	635	300/44
	195/55R16	87H	6J	201	620	300/44
	205/55R16	91T	6 1/2J	214	632	300/44
16	205/60R16	92T	6J	209	652	300/44
	215/55R16	93H	7J	226	642	300/44
	215/60R16	95T	6 1/2J	221	664	300/44
	215/65R16	102H	6 1/2J	221	686	300/44
	225/55R16	95H	7J	233	654	300/44
	205/50R17	89H	6 1/2J	214	638	300/44
	215/55R17	98T XL	7J	226	668	340/50
17	225/45R17	94H	7 1/2J	225	634	300/44
	225/50R17	94H	7J	233	658	300/44
	225/55R17	97T	7J	233	680	300/44
	235/45R17	94H	8J	236	644	300/44
	225/40R18	92H	8J	230	637	300/44
	225/45R18	91H	7 1/2J	225	659	300/44
18	245/45R18	96H	8J	243	677	300/44
	235/35R19	87H	8 1/2J	241	647	300/44

TECHNICAL KNOWLEDGE



OTHER MARKINGS:

P - as part of the tyre size designation (e.g., P265/70R15) used to indicate tyres intended for services on passenger cars.

LT - as part of the tyre size designation (e.g., LT235/75R15) used to indicate the tyres are intended for light truck vehicles.

M+S - letters used to indicate a tyre suitable for Mud and Snow and/or All Season usage.

XL - as part of the tyre size designation (e.g., 225/55R16 XL) used to indicate the tyre can carry more loads as the maximum inflation pressure and load are greater than a standard load version. (Also could be called REINFORCED).

ZR - as part of the tyre size designation (e.g., 225/45ZR17 XL) used to indicate the tyre has a maximum speed capability over 240Kilometer/hour.

SPEED RATING

The speed symbol refers to the maximum speed capabilities of the tyre.

It is only valid for tyre that are properly inflated and loaded within their assigned load index.

Speed Symbol	Q	R	S	T	H	V	W	Y	ZR
Maximum Speed (km/hr)	160	170	180	190	210	240	270	300	240 & above

LOAD INDEX

The load index is the maximum load-carrying capacity of a tyre under a specific condition.

Load Index	KG	LBS
70	335	739
71	345	761
72	355	783
73	365	805
74	375	827
75	387	853
76	400	882
77	412	908
78	425	937
79	437	963
80	450	992
81	462	1019
82	475	1047
83	487	1074
84	500	1102
85	515	1135
86	530	1168
87	545	1202
88	560	1235
89	580	1279
90	600	1323
91	615	1356
92	630	1389
93	650	1433
94	670	1477
95	690	1521
96	710	1565
97	730	1609
98	750	1653
99	775	1709

Load Index	KG	LBS
100	800	1764
101	825	1819
102	850	1874
103	875	1929
104	900	1984
105	925	2039
106	950	2094
107	975	2149
108	1000	2205
109	1030	2271
110	1060	2337
111	1090	2403
112	1120	2469
113	1150	2535
114	1180	2601
115	1215	2679
116	1250	2756
117	1285	2833
118	1320	2910
119	1360	2998
120	1400	3086
121	1450	3197
122	1500	3307
123	1550	3417
124	1600	3527
125	1650	3638
126	1700	3748
127	1750	3858
128	1800	3968
129	1850	4079