

BLUE REFRIGERATION 宁波新布鲁能源科技有限公司
NINGBO NEW BLUE ENERGY TECHNOLOGY CO.,LTD

工厂地址: 浙江省杭州建德市航头镇大店口工业区
办公室地址: 浙江省宁波市江北区洪塘街道U+未来中心2号楼
电话: 0086-574-87036969
传真: 0086-574-87683926
手机: 0086-18657457888 (微信同号)
QQ:770718217
邮箱: info@bluerefrigeration.com
网址: www.bluerefrigeration.com
邮编: 315031

Workshop Add:NO.3 Dadiankou Industrial Zone, Hangtoun town,
Jiande, Hangzhou, Zhejiang, China
Office Add: BUILDING 2, NO.788 JINSHAN ROAD , JIANGBEI
DISTRICT, NINGBO, CHINA
Tel: 0086-574-87036969
Fax: 0086-574-87683926
Cell: 0086-18657457888 (We Chat/Whatsapp)
Skype:jonathanyanbiz
E-mail: info@bluerefrigeration.com
Website: www.bluerefrigeration.com
Zip: 315031



本样本不断完善更新, 2021-2022版用于代替其他旧样本
This catalog will be keeping creating,Version 2021-2022 is replace other old versions.

BLUE
REFRIGERATION

宁波新布鲁能源科技有限公司
NINGBO NEW BLUE ENERGY TECHNOLOGY CO.,LTD

Pressure Vessel Catalogue
压力容器产品目录

2023

BLUE
REFRIGERATION



ISO 9001:2008



Pressure Vessel Catalogue 压力容器产品目录

Pressure
Vessel
Catalogue

2023

宁波新布鲁能源科技有限公司
NINGBO NEW BLUE ENERGY TECHNOLOGY CO.,LTD

A COMPANY OF REFWORLD GROUP

WWW.BLUEREFRIERATION.COM



A WORLD OF REFRIGERATION

制冷大世界

精工细铸.打造世界级品质

Devoted to be Delicate. Create the World-Class Quality

GOOD QUALITY!



Filter Drier
过滤器

Filter Drier Products 过滤器类产品	P03
BLR/EK 分子筛过滤器 BLR/EK Extra-Klean Liquid Line Filter Drier	P04
BLR/ADK 块状 (固体芯) 过滤器 BLR/ADK Core-Style Liquefied Line Filter Drier	P05
BLR/DCL&BLR/DML 块状过滤器 BLR/DCL&BLR/DML Solid Core Filter Drier	P06
BLR/DCL 41 块状过滤器带视镜&BLR/DML FS 车载过滤器 BLR/DCL 41 Solid Core Filter Drier&BLR/DML FS Automobile Filter Drier	P07
BLR/BFK 双向过滤器 (热泵用) BLR/BFK Bi-Flow Filter Drier (For Heat Pump)	P08
BLR/ASF 吸气过滤器 BLR/ASF Suction Line Filter Drier	P09
BLR/SSR 吸气过滤器 BLR/SSR Suction Line Filter Drier	P10
BLR/DAS 烧毁型过滤器 BLR/DAS Burn-out Filter Drier	P11
BLR/STAS H48 可拆式液管干燥过滤桶 BLR/STAS Replaceable Steel Liquid And Suction Filter Drier	P12
BLR/ADKS H100 可拆式吸气过滤桶 BLR/ADKS H100 Replaceable Steel Liquid And Suction Filter Drier	P13
BLR 系列 滤芯和安装支架 BLR Series Filter Drier Core And Bracket	P14
过滤器类产品型号对照表 Filter Drier Series Products Cross Reference	P15-20



Oil Management Control
油路控制器

Oil Management Products 油路控制器类产品	P21-22
BLR/A-W&BLR/A-F 传统封闭&法兰油分离器 BLR/AW&BLR/AF Sealed and Flanged Oil Separator	P23-24
BLR/OSH 带法兰高效离心式油分离器 BLR/OSH Helical Oil Separator & Flange	P25-26
BLR/OSR 储油式高效油分离器 BLR/OSR Helical Oil Separator With Oil Reservoir	P27-28
BLR/S 高效油分 BLR/S Helical Oil Separator	P29
BLR/C 高效油分 BLR/C Welded&Flanged Helical Oil Separator	P30
BLR/T 油分 BLR/T Coalescent And Conventional Oil Separator	P31
BLR/AOS 车用油分离器 BLR/AOS Automobile Oil Separator	P32
BLR/OA(OS.D) 螺杆压缩机的油分 BLR/OA(OS.D) Helical Oil Separator For Screw Compressor	P33-34
BLR/OLR-ADP 油位平衡器转接头 BLR/OLR-ADP Oil Level Regulator Adaptor	P35
BLR/OMB 电子油位平衡器 BLR/OMB Electronic Oil Level Regulator	P36
BLR/OLR 油平衡器 BLR/OLR Oil Level Regulators	P37-38
BLR/VOR 立式储油器 BLR/VOR Vertical Oil Reservoir	P39
BLR/S 储油器 BLR/S Oil Reservoir	P40
BLR/HOR 卧式储油器 & BLR/ODCV 油压差止回阀 BLR/HOR Horizontal Oil Reservoir & BLR/ODCV Oil Differential Check Valve	P41
BLR/OFD 油过滤器 BLR/OFD Oil Filter Drier	P42
油路控制器类产品型号对照表 Oil Management Products Cross Reference	P43-44



Suction Line Accumulator
气液分离器

Liquid Receiver
储液器

Other Products
其他产品

Other
其他



Suction Line Accumulator Products 气液分离器类产品	
BLR/SLA 气液分离器 BLR/SLA Suction Line Accumulator	P45
BLR/A-AS 气液分离器 BLR/A-AS Suction Line Accumulator	P46
BLR/HSA 热交换 气液分离器 BLR/HSA Heat Exchanger Suction Line Accumulator	P47
BLR/SRAH 热交换气液分离器(带储液) BLR/SRAH Heat Exchanger Suction Line Accumulator(With Liquid Receivers)	P48
BLR/MFL 消音器 BLR/MFL Muffler	P49
气液分离器类产品型号对照表 Suction Line Accumulator Products Cross Reference	P50
Liquid Receiver Products 储液器类产品	P51-52
BLR/VLR 中间焊接拉伸储液器 BLR/VLR Deep Drawn Vertical Liquid Receiver	P53
BLR/HLR 标准款式卧式储液器 BLR/HLR Standard Type Horizontal Liquid Receivers	P54
BLR/VLR 立式储液器 BLR/VLR Vertical Liquid Receiver	P55
BLR/VLR-DS 立式储液器 BLR/VLR-DS Vertical Liquid Receiver	P56-60
BLR/HLR 卧式储液器 BLR/HLR Horizontal Liquid Receiver	P61-64
液位传感器 Liquid & Oil Level Sensors	P65
安装脚 Foot Connections	P66
Other Products 其他产品	
机组标准化套件 Easy Solid Install Kits for Condensing Units	P67-68
壳管冷凝器 BLR/K Shell And Tube Condensers	P69-71
单系统壳管水冷冷凝器 Single Circuit sea water cooler condenser B series	P72-74
比泽尔半封配套水冷冷凝器系列 Water-cooled Condenser for Bitzer's Semi-Hermetic Compressors Series	P75
单机干式蒸发器系列 Single Circuit Dry-type Evaporator Series	P76
水冷油冷却器 Water To Oil Cooler	P77
风冷油冷却器 Air to Oil Cooler	P78
BLR/SLHE 经济器 BLR/SLHE Series Suction Line Desuperheater	P79-80
二氧化碳类产品 CO2 Products	P81-104
Other 其他	
给代理商的礼物 Present For Distributor	P105
布鲁产品工具书 BLUE Products Reference Book	P106
布鲁制冷部件 BLUE REFRIGERATION COMPONENTS	P107



Company Profile ;

NINGBO NEW BLUE ENERGY TECHNOLOGY CO.,LTD is a company which was founded in 2013. We devote to provide best quality products with reasonable price. In order to suit the rapid developing marketing needs and provide the customers with high quality products and satisfactory service, the highly experienced technical team is dedicated to sustainable product development, technology innovation and quality control.

BLUE REFRIGERATION have been putting into production for more than three years, our mainly products are filter drier, replaceable filter drier, oil separator, suction line accumulator, liquid receive, pressure hose ,valves and other refrigeration parts. These are widely used in refrigeration, AC heat pump, transportation refrigeration, household appliances refrigeration, kitchen refrigeration, laboratory equipments and other fields. More than 95% of our products are hot selling to more than 20 countries around the world. In order to enrich our business range and provide more wide service to our customers, we have become the distributor of GOMAX,NGI,DEKA, etc.

BLUE REFRIGERATION always here to open our door to welcome you to be our distributors or OEM customers. We sincerely hope can establish long-term cooperation with your esteem company. We stick to use best quality materials for our products. "Devoted to be delicate. create the world-class quality" is our attitude, That's why Our products are well accepted and recognized as even higher quality than some famous brands.

BLUE REFRIGERATION is devoted to become one of the top suppliers of its kind of products in Refrigeration and Air Conditioning field. We are here devoted to provide best service, good quality, good price for our customers around the world.

布鲁制冷

宁波布鲁能源科技有限公司成立于2013年，我们致力于提供最好的产品，最有合理的价格。为了适应市场的高速变化，提供给客户更好的产品及服务，我们建立了专业的技术团队去开发和研发新产品，不断地技术创新及质量控制。

布鲁制冷投产已经超过三年，我们主要生产的产品有过滤器、过滤桶、油分、气分、储液器、储油器、铜配件和压力软管及配件等制冷系列相关产品，广泛地应用至冷冻冷藏、空调热泵、运输制冷、家电制冷、厨房制冷、实验室设备等领域。95%以上的产品销往全球20几个国家和地区。为了扩大我们的经营范围来更好地服务客户，我们代理了意大利GOMAX压力软管(应用CO2系统)，意大利NGI安全阀，德国DEKA电子油位平衡器等国外优秀产品。

布鲁制冷永远欢迎来自国内外的您成为我们的合作伙伴。我们真诚地希望能够与您建立长久的合作关系。我们坚持使用高品质的原材料，看齐知名品牌。坚守“精工细铸.打造行业一流品质”的理念，因而以优良的产品品质和优质的服务在短期内就得到了客户和市场的认可。

布鲁制冷致力于成为制冷与空调行业的顶级供应商，我们致力于给国内外客户提供最好的服务，最优质的品质以及最好的价格。



Factory ;

BLUE Refrigeration is aware of operation features and importance of its products, and therefore, carries out all production process with great care.

The company carefully arranges and manages every stage of production.

Raw material input inspection is followed by.

- ◆ Raw material input control
- ◆ Length cutting and perforating is carried out by plasma cutting machines.
- ◆ Plate cutting is carried out by modern guillotine-shears, and processed by hydraulic presses and high-capacity double-stage deep drawing presses.
- ◆ Connection devices are processed by CNC machines.
- ◆ Welding operations are carried out by 90% automatic robot machines.
- ◆ Tightness tests and measurement tests are carried out by high-capacity screw compressors.
- ◆ Paint works are fulfilled by rail electrostatic painting system after phosphate cleaning.
- ◆ Mounted products are labeled and stored according to serial numbers and groups.

Around 85% of BLUE REFRIGERATION production is carried out at own factories by its experts as required by production and product certification.

BLUE REFRIGERATION is increasing investment in machines and technical materials in order to use technology better and more effective.

工厂 ;

布鲁制冷 了解其产品的操作和功能的重要性，因此，所有生产过程都非常小心谨慎。

公司精心安排和管理生产的每一个阶段。

原材料输入按以下步骤检查：

- ◆ 原料输入控制
- ◆ 用等离子切割机进行长度切割和打孔。
- ◆ 板材切割用现代剪板机，板材拉伸用液压机和大量双级深拉伸压力机处理。
- ◆ 连接管等五金件用数控机床加工。
- ◆ 焊接的操作90%的用自动机器人完成。
- ◆ 气密性测试和测量测试用大容量螺杆式压缩机。
- ◆ 油漆工艺，用静电喷涂系统后磷酸盐清洗。
- ◆ 安装完的产品贴上标签，根据序列号分类存储。

布鲁制冷 大约85%产品都是在自己的工厂进行生产和产品认证的。

布鲁制冷在机器和技术材料增加投资，以便技术更好，更有效率。



BLR/EK Extra-Klean Liquid Line Filter Drier BLR/EK 分子筛过滤器

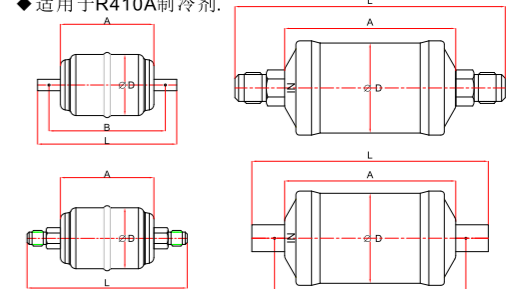
General Description / 描述

BLR/EK Filter Drier is a premium compacted bead Filter Drier with a 20 micron outlet pad for maximum diameter. BLR/EK is a premium universal replacement liquid line Filter Drier for CFC, HCFC and HFC refrigerants including R-12, R-134a, R-22, R-404A, BLR/EK 过滤器是一种优质的干燥过滤器，压缩不锈钢网垫最大的口径为20微米的出口。

Features / 特点

- ◆ Corrosion resistant epoxy powder paint finish, Salty test up to 400 hour
- ◆ Filtration first for more effective use of surface area of desiccant
- ◆ Solid copper connections
- ◆ Shock resistant steel shell construction
- ◆ Desiccant blend-optimized for high water and acid capacity
- ◆ S.S. Filtration: 20 microns
- ◆ Maximum working pressure: 680 psig
- ◆ Suitable for R410A

- ◆ 防腐喷塑环氧涂层表面处理，盐雾试验最高可达400小时
- ◆ 充分利用干燥剂的表面积来过滤
- ◆ 结实的紫铜管接口
- ◆ 抗震钢外壳结构
- ◆ 干燥剂混合优化的高水和酸的能力
- ◆ 不锈钢滤网：20微米
- ◆ 最大工作压力：680 psig
- ◆ 适用于R410A制冷剂。



Technical data / 技术参数

Model 型号	Connection 接口		Flow Capacity 制冷量 TONS @ 1 psi ΔP ^{①②}					Dimensions(mm) 尺寸(毫米)				WT/重量 (lbs)/磅
	英寸(Inch)	毫米(mm)	R-134a	R-22	R-410A	R-407C	R-404A/507	L	B	A	D	
BLR/EK-032FM	1/4Fem/Out SAE	6	2.0	2.2	2.2	2.1	1.4	88	-	66	φ43	0.50
BLR/EK-032MF	1/4Male/In SAE	6	2.0	2.2	2.2	2.1	1.4	88	-			
BLR/EK-032	1/4 SAE	6	2.0	2.2	2.2	2.1	1.4	112	-			
BLR/EK-032S	1/4 ODF	6	2.7	2.9	2.9	2.9	2.0	103	83			
BLR/EK-032SV	1/4 ODF	6	2.7	2.9	2.9	2.9	2.0	-	-	76	φ63	1.25
BLR/EK-033	3/8 SAE	10	3.0	3.3	3.3	3.2	2.2	120	-			
BLR/EK-033S	3/8 ODF	10	3.0	3.3	3.3	3.2	2.2	104	82			
BLR/EK-052FM	1/4Fem/Out SAE	6	2.1	2.3	2.3	2.2	1.5	-	-			
BLR/EK-052MF	1/4Male/In SAE	6	2.1	2.3	2.3	2.2	1.5	114	-	97	φ63	1.25
BLR/EK-052	1/4 SAE	6	2.1	2.3	2.3	2.2	1.5	122	-			
BLR/EK-052S	1/4 ODF	6	3.3	3.6	3.6	3.5	2.4	113	94			
BLR/EK-053MF	3/8Male/In SAE	10	3.5	3.8	3.8	3.7	2.5	-	-			
BLR/EK-053	3/8 SAE	10	3.5	3.8	3.8	3.7	2.5	130	-	120	φ76	4.75
BLR/EK-053S	3/8 ODF	10	4.4	4.8	4.8	4.7	3.2	114	93			
BLR/EK-082FM	1/4Fem/Out SAE	6	2.3	2.5	2.5	2.4	1.7	-	-			
BLR/EK-082MF	1/4Male/In SAE	6	2.3	2.5	2.5	2.4	1.7	-	-			
BLR/EK-082	1/4 SAE	6	2.3	2.5	2.5	2.4	1.7	143	-	190	φ76	3.75
BLR/EK-082S	1/4 ODF	6	3.1	3.4	3.4	3.3	2.2	134	114			
BLR/EK-0825S	5/16 ODF	8	3.5	3.8	3.8	3.7	2.5	136	111			
BLR/EK-083MF	3/8 Male/In SAE	10	4.0	4.3	4.3	4.3	2.9	150	-			
BLR/EK-083	3/8 SAE	10	4.0	4.3	4.3	4.3	2.9	151	-	192	φ89	4.75
BLR/EK-083S	3/8 ODF	10	4.5	4.9	4.9	4.8	3.3	135	113			
BLR/EK-084	1/2 SAE	12	6.7	7.3	7.3	7.1	4.9	156	-			
BLR/EK-084S	1/2 ODF	12	7.1	7.7	7.7	7.5	5.1	136	111			
BLR/EK-162MF	1/4Male/In SAE	6	2.3	2.5	2.5	2.4	1.7	-	-	333	φ76	7.50
BLR/EK-162	1/4 SAE	6	2.3	2.5	2.5	2.4	1.7	167	-			
BLR/EK-162S	1/4 ODF	6	3.1	3.4	3.4	3.3	2.2	157	138			
BLR/EK-1625S	5/16 ODF	8	3.1	3.4	3.4	3.3	2.2	150	134			
BLR/EK-163	3/8 SAE	10	3.9	4.2	4.2	4.1	2.8	175	-	190	φ76	3.75
BLR/EK-163S	3/8 ODF	10	4.4	4.8	4.8	4.7	3.2	157	138			
BLR/EK-164	1/2 SAE	12	7.2	7.8	7.8	7.7	5.2	179	-			
BLR/EK-164S	1/2 ODF	12	8.5	9.2	9.2	9.0	6.2	160	135			
BLR/EK-165	5/8 SAE	16	9.7	10.5	10.5	10.3	7.0	190	-	190	φ76	3.75
BLR/EK-165S	5/8 ODF	16	10.1	10.9	10.9	10.7	7.3	167	135			
BLR/EK-167S	7/8 ODF	22	15.5	16.8	16.8	16.5	11.2	190	152			
BLR/EK-303	3/8 SAE	10	4.3	4.7	4.7	4.6	3.1	245	-			
BLR/EK-303S	3/8 ODF	10	6.3	6.8	6.8	6.7	4.6	230	208	190	φ76	3.75
BLR/EK-304	1/2 SAE	12	8.1	8.8	8.8	8.6	5.9	250	-			
BLR/EK-304S	1/2 ODF	12	10.0	10.8	10.8	10.6	7.2	232	206			
BLR/EK-305	5/8 SAE	16	10.6	11.5	11.5	11.3	7.7	262	-			
BLR/EK-305S	5/8 ODF	16	12.5	13.5	13.5	13.3	9.1	236	205	190	φ76	3.75
BLR/EK-306S	3/4 ODF	18	14.8	16.0	16.0	15.7	10.7	246	215			
BLR/EK-307S	7/8 ODF	22	16.8	18.2	18.2	17.9	12.2	251	213			
BLR/EK-309S	1 1/8 ODF	28	19.6	21.2	21.2	20.8	14.2	268	215			
BLR/EK-413	3/8 SAE	10	4.3	4.7	4.7	4.6	3.1	246	-	192	φ89	4.75
BLR/EK-414	1/2 SAE	12	10.4	11.3	11.3	11.1	7.5	251	-			
BLR/EK-414S	1/2 ODF	12	10.8	11.7	11.7	11.5	7.8	233	208			
BLR/EK-415	5/8 SAE	16	12.0	13.0	13.0	12.8	8.7	261	-			
BLR/EK-415S	5/8 ODF	16	17.0	18.4	18.4	18.1	12.3	238	208	333	φ76	7.50
BLR/EK-417S	7/8 ODF	22	20.3	22.0	22.0	21.6	14.7	252	215			
BLR/EK-419S	1 1/8 ODF	28	27.7	30.0	30.0	29.4	20.1	276	-			
BLR/EK-757S	7/8 ODF	22	22.2	24.1	24.1	23.6	16.1	394	365			
BLR/EK-759S	1 1/8 ODF	28	32.7	35.4	35.4	34.8	23.7	403	365			

General Description / 描述

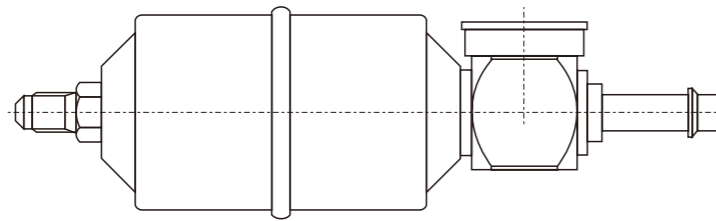
Filters and liquid/humidity indicators are designed for installation on commercial refrigeration systems and civil and industrial air conditioning systems employing Group II refrigerants.

Filter driers are available in a hermetically sealed version or with a solid exchangeable cartridge.

Hermetically sealed filters are supplied in the standard drier version, series 43, anti-acid series 42, bi-directional flow series 46, with indicator series 41 and mechanical series 45.

Filters with a solid exchangeable cartridge are available in packages of 1 to 4 standard drier, anti-acid or mechanical cartridges.

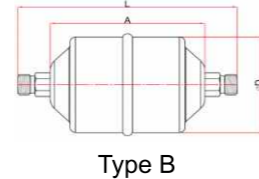
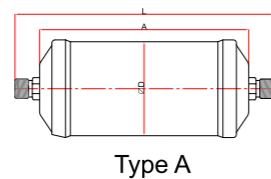
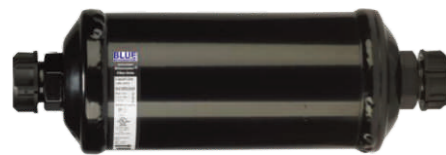
Liquid/humidity indicators are available with welded or flare connections in a monitoring only version, series 38, or monitoring + humidity detection, series 37 and 39.



Technical Data 技术参数

Model 型号	Cross Reference 对照	Connection 接口 (inch)	Nominal volume 标称容积	PS[bar]	TS [°C]		Package pcs 包装件数
					最小 min	最大 Max	
BLR/DCL-4105/2	052	1/4" SAE	80	45	-40	+80	24
BLR/DCL-4105/3	053	3/8" SAE					24
BLR/DCL-4108/2	082	1/4" SAE					24
BLR/DCL-4108/3	083	3/8" SAE	130				24
BLR/DCL-4108/4	084	1/2" SAE					24
BLR/DCL-4116/3	163	3/8" SAE	250				14
BLR/DCL-4116/4	164	1/2" SAE		14			
BLR/DCL-4116/5	165	5/8" SAE		14			
BLR/DCL-4132/6	306	3/4" SAE		14			

BLR/DML FS Automobile Air Condition & Transportation Filter Drier With O Ring Connection 汽车空调&运输制冷用过滤器



Model 型号	Connection (inch) 接口 (英寸)	Dimensions(mm) 尺寸 (毫米)			Danfoss Model 丹佛斯型号	Danfoss Code 丹佛斯编号	Type
		L	A	D			
BLR/DML(D) 163FS	3/8" O Ring	156	110	75	/	/	B
BLR/DML163FS	3/8" O Ring	158	112	76	DML163FS M/15	023Z0245	A
BLR/DML(D) 164FS	1/2" O Ring	164	110	75	/	/	B
BLR/DML164FS	1/2" O Ring	166	112	76	DML 164 FS M/15	023Z0246	A
BLR/DML303 FS	3/8" O Ring	232	186	76	DML303 FS M/8	023Z0247	A
BLR/DML304 FS	1/2" O Ring	240	186	76	DML 304 FS M/8	023Z0248	A
BLR/DML305 FS	5/8" O Ring	250	186	76	DML 305 FS M/8	023Z0264	A

info@bluerefrigeration.com

BLR/BFK Bi-Flow Filter Drier (For Heat Pump) BLR/BFK 双向过滤器 (热泵用)

General Description / 描述

BLR/BFK is a solid core, bi-directional, liquid line Filter Drier for heat pump applications for use with CFC, HCFC, and HFC refrigerants.

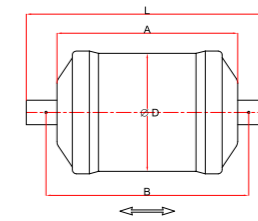
Desiccant Blend: optimized for high water capacity and acid capacity

BLR/BFK是固体芯双向热泵用过滤器。适合CFC,HCFC和HFC制冷剂。配方适合高含水和高酸的去除。

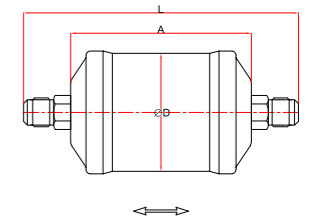
Features / 特点

- ◆ Corrosion resistant epoxy powder paint finish, Salty test up to 400 hours
- ◆ Available 5 to 30 cu. in. size
- ◆ Internal check valves allow flow and filtration in either direction, eliminates need for external check valves
- ◆ High moisture and acid removal capacity
- ◆ Approved for POE oils
- ◆ S.S. Filtration: 20 microns
- ◆ Maximum working pressure: 680 psig
- ◆ Suitable for R410A

- ◆ 防腐喷塑环氧涂层表面处理, 盐雾试验最高可达400小时
- ◆ 活性炭混合滤芯污染物和清蜡
- ◆ 内部单向阀结构允许人以方向流动 确保不需要额外安装外部单向阀
- ◆ 适合高水份和酸的去除
- ◆ 适用于POE油
- ◆ 不锈钢滤网: 20微米
- ◆ 最大工作压力: 680 psig
- ◆ 适用于R410A制冷剂。



ODF



SAE

Technical data / 技术参数

Model 型号	Connection 接口		Flow Capacity Tons @ 1 psi ΔP ⁴ (For KW, Multiply tons by 3.5)			Dimensions(mm) 尺寸(毫米)			WT/重量 (lbs)/磅
	英寸 (Inch)	毫米 (mm)	R-22	R-410A	R-407C	L	A	D	
BLR/BFK-052	1/4SAE	6	1.6	1.6	1.6	122	-	φ63	1
BLR/BFK-052S	1/4ODF	6	2.2	2.2	2.2	113	93		
BLR/BFK-053	3/8SAE	10	-	-	-	130	-		
BLR/BFK-053S	3/8ODF	10	4.0	4.0	3.9	114	93		
BLR/BFK-082S	1/4ODF	6	-	-	-	134	115		
BLR/BFK-0825S	5/16ODF	8	-	-	-	128	111		
BLR/BFK-083	3/8SAE	10	4.5	4.5	4.4	151	-		
BLR/BFK-083S	3/8ODF	10	5.1	5.1	5.0	135	114		
BLR/BFK-084	1/2SAE	12	6.4	6.4	6.3	156	-		
BLR/BFK-084S	1/2ODF	12	6.7	6.7	6.6	137	112		
BLR/BFK-085	5/8SAE	16	-	-	-	167	-	φ76	2
BLR/BFK-085S	5/8ODF	16	8.1	8.1	7.9	142	111		
BLR/BFK-163	3/8 SAE	10	4.6	4.6	4.5	171	-		
BLR/BFK-163S	3/8ODF	10	5.2	5.2	5.1	154	134		
BLR/BFK-164	1/2SAE	12	7.7	7.7	7.6	176	-		
BLR/BFK-164S	1/2ODF	12	8.1	8.1	7.9	157	132		
BLR/BFK-165	5/8SAE	16	8.3	8.3	8.1	187	-		
BLR/BFK-165S	5/8ODF	16	8.7	8.7	8.5	162	145		
BLR/BFK-167S	7/8ODF	22	-	-	-	178	-		
BLR/BFK-303	3/8 SAE	10	-	-	-	244	-		
BLR/BFK-303S	3/8ODF	10	5.8	5.8	5.7	227	207		
BLR/BFK-304	1/2SAE	12	7.6	7.6	7.5	249	-		
BLR/BFK-304S	1/2ODF	12	9.7	9.7	9.5	230	205		
BLR/BFK-305	5/8SAE	16	10.3	10.3	10.1	260	-		
BLR/BFK-305S	5/8ODF	16	14.2	14.2	13.9	235	210		
BLR/BFK-306	3/4SAE	19	-	-	-	262	-		
BLR/BFK-306S	3/4ODF	19	16.0	16.0	15.7	247	214		
BLR/BFK-307S	7/8ODF	22	16.7	16.7	16.4	251	218		
BLR/BFK-309S	1-1/8ODF	28	-	-	-	259	220		

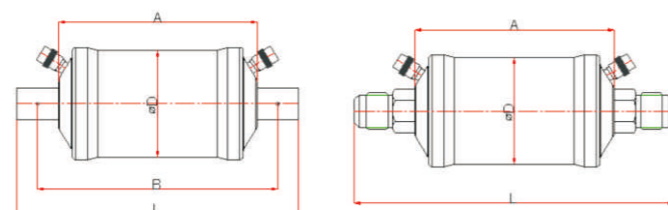
www.bluerefrigeration.com

General Description / 描述

BLR/ASF suction line filters are specifically designed to protect the compressor from dirty and all solid contaminants
BLR/ASF 吸气过滤器是设计用于保护压缩机免受制冷空调系统里面的灰尘和物体污染物的侵害。
Suction line filter for removing solid contaminants 适用于去除系统里面的杂质。

Features / 特点

- ◆ Corrosion resistant epoxy powder paint finish, Salty test up to 400 hours
- ◆ Dual access valves & Solid copper fittings
- ◆ S.S. Filtration: 40 microns
- ◆ Maximum working pressure: 500 psig
- ◆ 防腐喷塑环氧涂层表面处理, 盐雾试验最高可达400小时
- ◆ 双检修阀 & 结实的铜管焊接口
- ◆ 不锈钢滤网: 40微米
- ◆ 最大工作压力: 500 psig



Technical data / 技术参数

Model 型号	Connection 接口		Dimensions(mm) 尺寸(毫米)				WT/重量 (lbs)/磅
	英寸(Inch)	毫米(mm)	L	B	A	D	
BLR/ASF-11S4	1/2ODF	12	111	86	73	66	1.50
BLR/ASF-11S5	5/8ODF	16	118	86	73	64	1.50
BLR/ASF-28S7	7/8ODF	22	165	127	105	64	2.00
BLR/ASF-28S9	1-1/8 ODF	28	188	145	105	64	2.00
BLR/ASF-28S3-VV	3/8ODF	10	142	120	105	64	2.00
BLR/ASF-28S4-VV	1/2ODF	12	145	119	105	64	2.00
BLR/ASF-35F5-VV	5/8SAE	16	192	-	121	89	2.50
BLR/ASF-35S5-VV	5/8ODF	16	166	134	121	89	2.50
BLR/ASF-45F3-VV	3/8SAE	10	195	-	141	89	3.00
BLR/ASF-45S6-VV	3/4ODF	19	197	165	141	89	3.00
BLR/ASF-45S7-VV	7/8ODF	22	202	164	141	89	3.00
BLR/ASF-50S9-VV	1-1/8ODF	28	225	179	156	127	3.50
BLR/ASF-64S17-VV	2-1/8ODF	54	299	230	194	127	3.50
BLR/ASF-64S21-VV	2-5/8ODF	67	330	254	200	127	3.50
BLR/ASF-75S11-VV	1-3/8ODF	35	311	262	210	127	5.00
BLR/ASF-75S13-VV	1-5/8ODF	42	309	252	210	127	5.00

Special Steel Filter Drier For Refrigerator 冷柜用铁过滤器



Note : This connection and size can be made according to customers' requirement.

info@bluerefrigeration.com

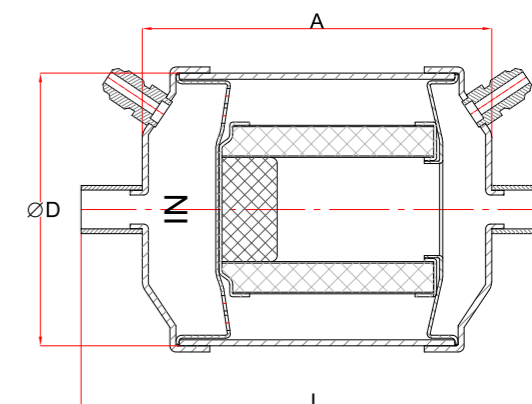
General Description / 描述

The Suction line Filter drier take the advantage of suction core, extra large shell diameter, and internal pressure distribution pipe design reducing the installation length. The Extra large suction core provides the maximum running capacity and maximum filtration surface. The pressure distribution pipe allows the distribution of refrigerant so that protect the pipe from damage, and take the advantage of all the filtration surface.

过滤器采用吸气芯子、大外壳直径及内部制冷剂扩压管设计, 减小安装长度, 大芯子可为取得最大的运行效率, 提供大的过滤面积, 扩压管使制冷剂均匀分散以避免磨损, 并有效利用所有的过滤面积。

Features / 特点

- ◆ The Min installing length to fit the compact place
- ◆ Low Pressure Drop—Max Filter Area of availability
- ◆ High acid and moisture removal ability
- ◆ Anticorrosive Powder Painting can suffer 500 hours Salty Spray Test.
- ◆ 2 examination valves can simplify the test of pressure drop
- ◆ Maximum working pressure: 3.5MPa
- ◆ 最短的安装长度以适应紧凑的地方
- ◆ 低压降——最大的有效过滤面积
- ◆ 强除酸, 持久去湿能力
- ◆ 防腐漆保证500小时盐雾喷淋试验
- ◆ 两个检修阀简化压降测量
- ◆ 最大工作压力: 3.5MPa



Technical data / 技术参数

Model 型号	ODF Connection 焊接口		Liquid Flow Refrigeration Capacity (KW) 流体制冷量 (KW)												Dimension (mm) 尺寸(毫米)		
			R22				R502				R134a				L	A	D
	英寸(Inch)	毫米(mm)	-30℃	-18℃	-7℃	+5℃	-30℃	-18℃	-7℃	+5℃	-30℃	-18℃	-7℃	+5℃			
BLR/SSR-283T	3/8	10	2.1	3.5	4.9	7.7	1.7	2.8	3.8	6.3	1.1	2.1	3.1	4.9	152	114	φ89
BLR/SSR-284T	1/2	12	3.5	5.6	8.4	12	2.8	6.3	6.6	10	1.8	3.1	5.2	8.1	154	114	
BLR/SSR-285T	5/8	16	3.8	6.3	9.1	14	3.1	4.9	7.3	12	1.8	3.5	5.9	8.8	160	114	
BLR/SSR-286T	3/4	19	6.6	10	15	22	5.2	8.4	12	19	3.1	5.9	9.8	15	202	152	
BLR/SSR-287T	7/8	22	7	11	16	24	5.2	8.7	13	20	3.5	6.3	10	16	208	152	
BLR/SSR-289T	1 1/8	28	13	20	30	46	10	16	24	38	6.3	12	20	30	215	152	
BLR/SSR-2811T	1 3/8	35	18	29	43	67	14	23	35	55	9.1	17	28	42	285	205	
BLR/SSR-2813T	1 5/8	42	22	35	51	79	17	28	41	65	11	20	33	50	290	205	

www.bluerefrigeration.com

General Description / 描述

BLR/DAS Burn-Out Filter Drier are used in the suction line to clean up refrigeration and air conditioning systems with flourinated refrigerants after a compressor motor burn-out.
The solid core, which is composed of 70% activated alumina and 30% Molecular Sieve, adsorbs harmful acids as well as moisture. By adsorbing these acids, the BLR/DAS burn-out filter drier protects the new compressor against failure.

BLR/DAS 烧毁型过滤器用于吸气管路上来清洁制冷系统或空调系统中压缩机电机烧毁后的残渣。
由70%活性氧化铝与30%分子筛组成的固体芯，吸收了具有破坏功能的酸与水分。用过吸附这些酸性物质，BLR/DAS 烧毁型过滤器可以有效的保护压缩机免受破坏。

Features / 特点

- ◆ 2 Schraeder access valves to measure pressure drop across the drier
- ◆ Available in sizes from 8 to 60 cubic inches
- ◆ Available with flare and solder (pure copper) connections
- ◆ 120 mesh wire mesh provides solid particle retention with minimal pressure drop
- ◆ Allows installation with any orientation provided the flow is in the arrow direction

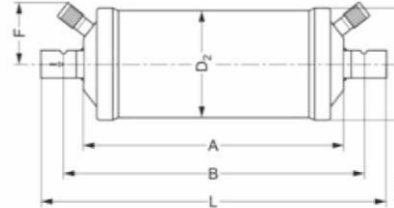


Figure 1

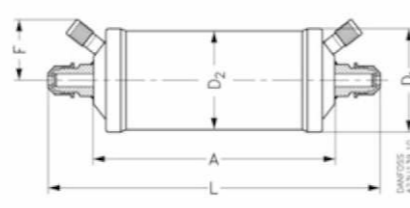
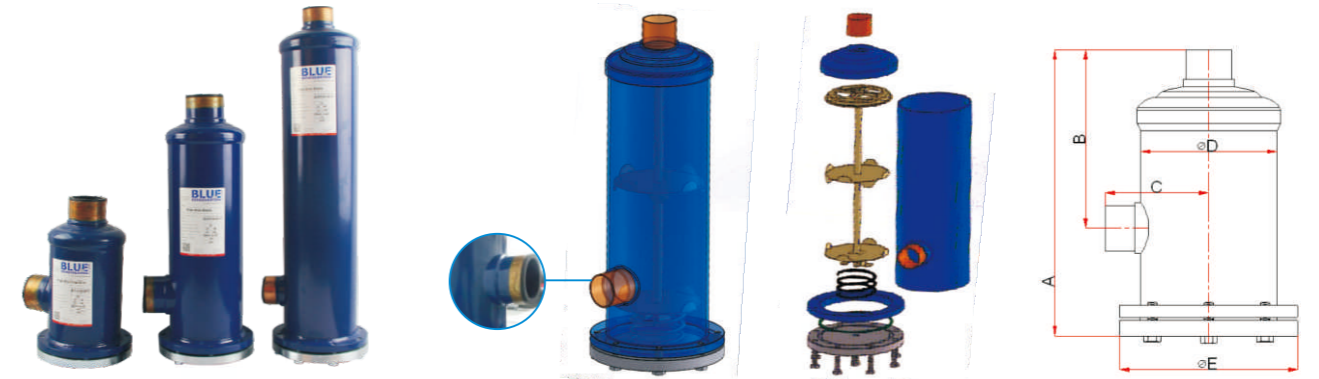


Figure 2

Technical data / 技术参数

Model 型号	Connection 接口		Dimension (mm)					Figure Number
	英寸 (Inch)	毫米 (mm)	A(mm)	B(mm)	L(mm)	D2(mm)	F(mm)	
BLR/DAS 083 SVV	3/8 ODF	10	101	120	139	54	40	Figure
BLR/DAS 084 SVV	1/2 ODF	12	101	120	143	54	40	
BLR/DAS 085 SVV	5/8 ODF	16	101	125	149	54	40	
BLR/DAS 086 SVV	3/4 ODF	19	101	131	161	54	40	
BLR/DAS 164 SVV	1/2 ODF	12	112	131	152	76	50	
BLR/DAS 165 SVV	5/8 ODF	16	112	136	160	76	50	
BLR/DAS 166 SVV	3/4 ODF	19	112	142	172	76	50	
BLR/DAS 167 SVV	7/8 ODF	22	112	143	174	76	50	
BLR/DAS 169 SVV	1 1/8 ODF	28	112	142	175	76	50	
BLR/DAS 305 SVV	5/8 ODF	16	186	210	234	76	50	
BLR/DAS 306 SVV	3/4 ODF	19	186	216	246	76	50	
BLR/DAS 307 SVV	7/8 ODF	22	186	217	248	76	50	
BLR/DAS 309 SVV	1 1/8 ODF	28	186	218	249	76	50	
BLR/DAS 417 SVV	7/8 ODF	22	191	217	253	89	55	
BLR/DAS 419 SVV	1 1/8 ODF	28	191	223	254	89	55	
BLR/DAS 083VV	3/8 SAE	10	101	-	147	54	40	
BLR/DAS 084VV	1/2 SAE	12	101	-	162	54	40	
BLR/DAS164VV	1/2 SAE	12	110	-	173	76	40	
BLR/DAS165VV	5/8 SAE	16	110	-	181	76	40	



Technical data / 技术参数

Model 型号	Connection 接口尺寸		Core Qty 滤芯数量	Desiccant Volume 滤芯体积 (cm³)	Dimensions (mm) 尺寸						
	英寸 (Inch)	毫米 (mm)			A	B	C	D	E		
H48 Filter Drier Shells / Single 1节H48过滤芯											
BLR/STAS-485T	5/8 ODF	16	1	48	233	143	80	114	150		
BLR/STAS-487T	7/8 ODF	22			244	154	90	114	150		
BLR/STAS-489T	1 1/8 ODF	28			245	155	92	114	150		
BLR/STAS-4811T	1 3/8 ODF	35			243	153	92	114	150		
BLR/STAS-4813T	1 5/8 ODF	42			245	164	92	114	150		
BLR/STAS-4817T	2 1/8 ODF	54			251	161	100	114	150		
BLR/STAS-4821ST	2 5/8 ODF	67			270	157	116	114	150		
BLR/STAS-4824ST	3 ODF	76			266	153	116	114	150		
BLR/STAS-4825ST	3 1/8 ODF	80			266	152	116	114	150		
BLR/STAS-4828ST	3 1/2 ODF	89			273	160	116	114	150		
H48 Filter Drier Shells / Double 2节H48过滤芯											
BLR/STAS-967T	7/8 ODF	22			2	96	389	299	90	114	150
BLR/STAS-969T	1 1/8 ODF	28	390	300			92	114	150		
BLR/STAS-9611T	1 3/8 ODF	35	388	298			92	114	150		
BLR/STAS-9613T	1 5/8 ODF	42	390	300			92	114	150		
BLR/STAS-9617T	2 1/8 ODF	54	396	306			100	114	150		
BLR/STAS-9621ST	2 5/8 ODF	67	415	302			116	114	150		
BLR/STAS-9624ST	3 ODF	76	411	298			116	114	150		
BLR/STAS-9625ST	3 1/8 ODF	80	411	321			116	114	150		
H48 Filter Drier Shells / Triple 3节H48过滤芯											
BLR/STAS-1449T	1 1/8 ODF	28	3	144			526	436	92	114	150
BLR/STAS-14411T	1 3/8 ODF	35					524	434	92	114	150
BLR/STAS-14413T	1 5/8 ODF	42					526	436	92	114	150
BLR/STAS-14417T	2 1/8 ODF	54			532	442	100	114	150		
BLR/STAS-14421ST	2 5/8 ODF	67			551	438	116	114	150		
BLR/STAS-14424ST	3 ODF	76			547	434	116	114	150		
BLR/STAS-14425ST	3 1/8 ODF	80			547	432	116	114	150		
H48 Filter Drier Shells / Quadruple 4节H48过滤芯											
BLR/STAS-19211T	1 3/8 ODF	35			4	192	675	585	92	114	150
BLR/STAS-19213T	1 5/8 ODF	42					677	587	92	114	150
BLR/STAS-19217T	2 1/8 ODF	54					683	593	100	114	150
BLR/STAS-19221ST	2 5/8 ODF	67					702	589	116	114	150
BLR/STAS-19224ST	3 ODF	76	698	585			116	114	150		
BLR/STAS-19225ST	3 1/8 ODF	80	698	583			116	114	150		

Technical Data

Working Pressure [PS]: 33 Bar
Test Pressure [PT]: 48 Bar
Allowable Temperature [TS]: Min. -10° C / Max. -130° C
Color [RAL]: 5009
General Tolerans [mm]: ±3

Note:

"T" style means with cooper connection
"ST" style means with steel coonection

技术参数

工作压力[PS]: 33 Bar
测试压力[PT]: 48 Bar
允许温度[TS]: 最小 -10° C / 最大 -130° C
颜色[RAL]: 5009
一般误差[mm]: ±3

注:

"T" 型号表示铜接口
"ST" 型号标识铁接口



Technical data / 技术参数

Model 型号	Connection 接口尺寸 (Inch)	Core Qty 滤芯数量 (Qty)	Filter Area 过滤面积 (In ²)	Dimensions (mm) 尺寸				
				A	B	C	D	E
H100 Filter drier shells / single 1节H100过滤芯								
BLR/ADKS-F10013	1-5/8	1	65.12	364	260	119	159	210
BLR/ADKS-F10017	2-5/8			372	262	124		
BLR/ADKS-F10021	2-5/8			374	257	125		
BLR/ADKS-F10024	3			387	265	127		
BLR/ADKS-F10025	3-1/8			387	265	127		
BLR/ADKS-F10029	3-5/8			387	265	127		
BLR/ADKS-F10034	4-1/4			393	260	160		
BLR/ADKS-F10042	5-1/4			400	256	180		
H100 Filter drier shells / Double 2节H100过滤芯								
BLR/ADKS-F20013	1-5/8	2	130.24	533	429	119	159	210
BLR/ADKS-F20017	2-1/8			541	431	124		
BLR/ADKS-F20021	2-5/8			543	426	125		
BLR/ADKS-F20024	3			556	434	127		
BLR/ADKS-F20025	3-1/8			556	434	127		
BLR/ADKS-F20028	3-1/2			556	434	127		
BLR/ADKS-F20029	3-5/8			556	434	127		
BLR/ADKS-F20034	4-1/4			562	429	160		
BLR/ADKS-F20042	5-1/4			570	425	180		
H100 Filter drier shells / Triple 3节H100过滤芯								
BLR/ADKS-F30013	1-5/8	3	195.35	702	596	119	159	210
BLR/ADKS-F30017	2-1/8			710	600	124		
BLR/ADKS-F30021	2-5/8			712	595	125		
BLR/ADKS-F30024	3			725	603	127		
BLR/ADKS-F30025	3-1/8			725	603	127		
BLR/ADKS-F30028	3-1/2			725	603	127		
BLR/ADKS-F30029	3-5/8			725	603	127		
BLR/ADKS-F30034	4-1/4			731	596	160		
BLR/ADKS-F30042	5-1/4			739	594	180		
H100 Filter drier shells / Quadruple 4节H100过滤芯								
BLR/ADKS-F40013	1-5/8	4	260.46	871	767	119	159	210
BLR/ADKS-F40017	2-1/8			879	769	124		
BLR/ADKS-F40021	2-5/8			881	764	125		
BLR/ADKS-F40024	3			894	772	127		
BLR/ADKS-F40025	3-1/8			894	772	127		
BLR/ADKS-F40028	3-1/2			894	772	127		
BLR/ADKS-F40029	3-5/8			894	772	127		
BLR/ADKS-F40034	4-1/4			900	767	160		
BLR/ADKS-F40042	5-1/4			908	763	180		

BLR Series Filter Drier Core And Mounting Bracket BLR 系列过滤芯和安装支架

General Description / 描述

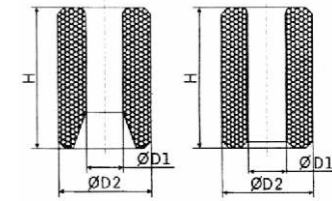
Universal replacement Suction Filter and Oil Filter cores for use in our BLR/ADKS and BLR/STAS core shell Filter Drier and other Take-Apart type Filter Drier shells from Sporlan, Emerson, Carly, Henry, Muller, Westernyer etc.

通用可替换过滤芯和吸气滤芯可以使用在BLR/ADKS and BLR/STAS 干燥过滤桶, 和其他来自于斯波兰, 艾默生, 亨利, 亨利等知名品牌的过滤桶。

Features / 特点

- ◆ Strong water absorb capacities suitable for specific system conditions
- ◆ Exceptional acid capacities for normal system protection, or to effectively clean-up following a compressor burnout
- ◆ Activated carbon blend for different refrigerant & Re-faigeration oil

- ◆ 超强的吸水能力适合特定的系统。
- ◆ 超强的去酸能力适用于有效的保护系统,或是可以有效的清洗烧毁型压缩机系统。
- ◆ 高效氧化铝适用于各种制冷剂与冷冻油。



D-48/H-48 H-100

Technical data / 技术参数

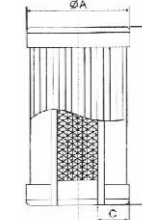
Model 型号	Refrigerant 制冷剂	Function 功能	Material 材质	Dimension(Inch) 尺寸(英寸)			Weight 重量(lbs)
				H	D1	D2	
BLR/D-48	CFC HCFC	Universal Replacement (一般可换芯)	80% molecular+20% aluminum (80%分子筛+20%氧化铝)	5.5	1.77	3.72	1.5
BLR/H-48	CFC HCFC	High Acid and Water Removal (强酸与水渍)	100% molecular (100%分子筛)	5.5	1.77	3.72	1.5
BLR/W-48HH	CFC HCFC HFC	Burnout Cleanup (烧毁清洁)	75% molecular+20% aluminum+5% active carbon (75%分子筛+20%氧化铝+5%活性炭)	5.5	1.77	3.72	1.5
BLR/D-100	CFC HCFC	Universal Replacement (一般可换芯)	80% molecular+20% aluminum (80%分子筛+20%氧化铝)	6.5	2.06	4.81	4
BLR/H-100	CFC HCFC	High Acid and Water Removal (强酸与水渍)	100% molecular (100%分子筛)	6.5	2.06	4.81	4
BLR/W-100-HH	CFC HCFC HFC	Burnout Cleanup (烧毁清洁)	75% molecular+20% aluminum+5% active carbon (75%分子筛+20%氧化铝+5%活性炭)	6.5	2.06	4.81	4



BLR/F-48
BLR/F-100

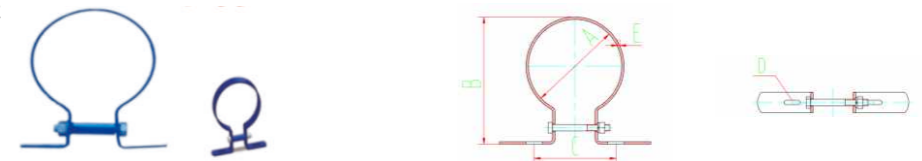


BLR/S-48



Model 型号	Refrigerant 制冷剂	Function 功能	Material 材质	Dimension(Inch) 尺寸(英寸)			Weight 重量(lbs)
				A	B	C	
BLR/F-48	CFC HCFC HFC	Filter(Suction Only) 过滤(仅吸气)	Pleated filter 百褶滤芯	3.74	5.51	0.79	0.75
BLR/F-100	CFC HCFC HFC	Filter(Suction Only) 过滤(仅吸气)	Pleated filter 百褶滤芯	4.69	6.54	1.1	1.5
BLR/S-48	CFC HCFC HFC	Filter(Suction Only) 过滤(仅吸气)	Stainless Steel 不锈钢	3.74	5.51	0.79	0.75
BLR/S-100	CFC HCFC HFC	Filter(Suction Only) 过滤(仅吸气)	Stainless Steel 不锈钢	4.69	6.54	1.1	1.5

BLR Series Mounting Bracket



Technical data / 技术参数

Model 型号	Dimension(mm) / 尺寸(毫米)				
	A	B	C	D	E
BLR/STAS48	114	95	100	5x20	3
BLR/ADKS100	152	115	100	5x20	3

品名/Item	型号 / Model	Danfoss	EMERSON	PARKER	SPORLAN	CASTEL	CARLY	MULLER
Extra-Klean Liquid Line Filter-Drier 分子筛过滤器	BLR/EK-032FM		EK-032FM		C-032-FM			
	BLR/EK-032MF		EK-032MF					
	BLR/EK-032	DML032	EK-032	032	C-032	4303/2S	DCY 032	A 16600 (FL-032)
	BLR/EK-032S	DML032S	EK-032S	032S	C-032-S	4303/3S	DCY 032 S	A 16640 (SD-032)
	BLR/EK-032SV		EK-032SV		C-032-SA			
	BLR/EK-033	DML033	EK-033		C-033	4305/3	DCY 033	A 16601 (FL-033)
	BLR/EK-033S	DML033S	EK-033S		C-033-S	4305/3S	DCY 033 S	A 16641 (SD-033)
	BLR/EK-052FM		EK-052FM		C-052-FM			
	BLR/EK-052MF		EK-052MF		C-052-F			
	BLR/EK-052	DML052	EK-052	052	C-052	4305/2	DCY 052	A 16606 (FL-052)
	BLR/EK-052S	DML052S	EK-052S	052S	C-052-S	4305/2S	DCY 052 S	A 16646 (SD-052)
	BLR/EK-053MF		EK-053MF		C-053-F			
	BLR/EK-053	DML053	EK-053		C-053	4305/3	DCY 053	A 16607 (FL-053)
	BLR/EK-053S	DML053S	EK-053S	053S	C-053-S	4305/3S	DCY 053 S	A 16647 (SD-053)
	BLR/EK-082FM		EK-082FM		C-082-FM			
	BLR/EK-082MF		EK-082MF		C-082-F			
	BLR/EK-082	DML082	EK-082	082	C-082	4308/2	DCY 082	A 16608 (FL-082)
	BLR/EK-082S	DML082S	EK-082S	082S	C-082S	4308/2S	DCY 082 S	A 16648 (SD-082)
	BLR/EK-0825S		EK-0825S		C-0825-S			
	BLR/EK-083MF		EK-083MF		C-083-F			
	BLR/EK-083	DML083	EK-083	083	C-083	Mar-08	DCY 083	A 16609 (FL-083)
	BLR/EK-083S	DML083S	EK-083S	083S	C-083-S	4308/3S	DCY 083 S	A 16649 (SD-083)
	BLR/EK-084	DML084	EK-084	084	C-084	Apr-08	DCY 084	
	BLR/EK-084S	DML084S	EK-084S	084S	C-084-S	4308/4S	DCY 084 S	A 16610 (FL-084)
	BLR/EK-162MF		EK-162MF		C-162-F			A 16640 (SD-084)
	BLR/EK-162	DML162	EK-162	162	C-162	4316/2	DCY 162	A 16612 (FL-162)
	BLR/EK-162S	DML162S	EK-162S	162S	C-162-S	4316/2S	DCY 162 S	
	BLR/EK-1625S		EK-1625S		C-1625-S			
	BLR/EK-163	DML163	EK-163	163	C-163	4316/3	DCY 163	A 16613 (FL-163)
	BLR/EK-163S	DML163S	EK-163S	163S	C-163-S	4316/3S	DCY 163 S	A 16653 (SD-163)
	BLR/EK-164	DML164	EK-164	164	C-164	4316/4	DCY 164	A 16614 (FL-164)
	BLR/EK-164S	DML164S	EK-164S	164S	C-164-S	4316/4S	DCY 164 S	A 16654 (SD-164)
	BLR/EK-165	DML165	EK-165	165	C-165	4316/5	DCY 165	A 16615 (FL-165)
	BLR/EK-165S	DML165S	EK-165S	165S	C-165-S	4316/5S	DCY 165 S/MMS	A 16655 (SD-165)
	BLR/EK-167S	DML167S	EK-167S		C-167-S	4316/7S	DCY 167 S	
	BLR/EK-303	DML303	EK-303	303	C-303	4330/3	DCY 303	A 16618 (FL-303)
	BLR/EK-303S	DML303S	EK-303S	303S	C-303-S	4330/3S	DCY 303 S	A 16658 (SD-303)
	BLR/EK-304	DML304	EK-304	304	C-304	4330/4	DCY 304	A 16619 (FL-304)
	BLR/EK-304S	DML304S	EK-304S	304S	C-304-S	4330/4S	DCY 304 S	A 16659 (SD-304)
	BLR/EK-305	DML305	EK-305	305	C-305	4330/5	DCY 305	A 16620 (FL-305)
	BLR/EK-305S	DML305S	EK-305S	305S	C-305-S	4330/5S	DCY 305 S	A 16660 (SD-305)
	BLR/EK-306S	DML306S	EK-306S		C-306-S		DCY 306 S	
	BLR/EK-307S	DML307S	EK-307S	307S	C-307-S		DCY 307 S	A 16662 (SD-307)
	BLR/EK-309S	DML309S	EK-309S		C-309-S		DCY 309 S	A 16661 (SD-309)
	BLR/EK-413	DML413	EK-413	413	C-413		DCY 413	A 16623 (FL-413)
	BLR/EK-414	DML414	EK-414	414	C-414	4341/4	DCY 414	A 16624 (FL-414)
	BLR/EK-414S	DML414S	EK-414S	414S	C-414-S	4341/4S	DCY 414 S	A 16664 (SD-414)
	BLR/EK-415	DML415	EK-415	415	C-415	4341/5	DCY 415	A 16625 (FL-415)
	BLR/EK-415S	DML415S	EK-415S	415S	C-415-S	4341/5S	DCY 415 S	A 16665 (SD-415)
	BLR/EK-417S	DML417S	EK-417S	417S	C-417-S	4341/7S	DCY 417 S	A 16667 (SD-417)
BLR/EK-419S	DML419S	EK-419S		C-419-S		DCY 419 S		
BLR/EK-757S	DML757S	EK-757S		C-607-S	4375/7S	DCY 757 S		
BLR/EK-759S	DML759S	EK-759S		C-609-S	4375/9S	DCY 759 S		

品名/Item	型号 / Model	EMERSON
CORE-STYLE LIQUED LINE FILTER DRIER 块状过滤器	BLR/ADK-032	ADK-032
	BLR/ADK-032S	ADK-032S
	BLR/ADK-033	ADK-033
	BLR/ADK-033S	ADK-033S
	BLR/ADK-052	ADK-052
	BLR/ADK-052S	ADK-052S
	BLR/ADK-053	ADK-053
	BLR/ADK-053S	ADK-053S
	BLR/ADK-082	ADK-082
	BLR/ADK-082S	ADK-082S
	BLR/ADK-083	ADK-083
	BLR/ADK-083S	ADK-083S
	BLR/ADK-084	ADK-084
	BLR/ADK-084S	ADK-084S
	BLR/ADK-162S	ADK-162S
	BLR/ADK-162	ADK-162
	BLR/ADK-163	ADK-163
	BLR/ADK-163S	ADK-163S
	BLR/ADK-164	ADK-164
	BLR/ADK-164S	ADK-164S
	BLR/ADK-165	ADK-165
	BLR/ADK-165S	ADK-165S
	BLR/ADK-303	ADK-303
	BLR/ADK-303S	ADK-303S
	BLR/ADK-304	ADK-304
	BLR/ADK-304S	ADK-304S
	BLR/ADK-305	ADK-305
	BLR/ADK-305S	ADK-305S
	BLR/ADK-307S	ADK-307S
	BLR/ADK-309S	ADK-309S
	BLR/ADK-413	ADK-413
	BLR/ADK-414	ADK-414
	BLR/ADK-414S	ADK-414S
	BLR/ADK-415	ADK-415
	BLR/ADK-415S	ADK-415S
	BLR/ADK-417S	ADK-417S
	BLR/ADK-419S	ADK-419S
	BLR/ADK-757S	ADK-757S
	BLR/ADK-759S	ADK-759S

品名/Item	型号 / Model	Danfoss	CASTEL	MULLER
Solid Core Filter Drier 块状过滤器	BLR/DCL-032	DCL032	4203/2	FL-032
	BLR/DCL-032S	DCL032s	4203/2S	SD-032
	BLR/DCL-033	DCL033	4203/3	FL-033
	BLR/DCL-033S	DCL033s		SD-033
	BLR/DCL-052	DCL052	4205/2	FL-052
	BLR/DCL-052S	DCL052s	4205/2S	SD-052
	BLR/DCL-053	DCL053	4205/3	FL-053
	BLR/DCL-053S	DCL053s	4205/3S	SD-053
	BLR/DCL-054	DCL054	4205/4S	
	BLR/DCL-082	DCL082	4208/2	FL-082
	BLR/DCL-082S	DCL082s	4028/2S	SD-082
	BLR/DCL-083	DCL083	4208/3	FL-083
	BLR/DCL-083S	DCL083s	4208/3S	SD-083
	BLR/DCL-084	DCL084	4208/4	FL-084
	BLR/DCL-084S	DCL084s		SD-084
	BLR/DCL-162	DCL162	4216/2	FL-162
	BLR/DCL-162S	DCL162s		
	BLR/DCL-163	DCL163	4216/3	FL-163
	BLR/DCL-163S	DCL163s		SD-163
	BLR/DCL-164	DCL164	4216/4	FL-164
	BLR/DCL-164S	DCL164s	4216/4S	SD-164
	BLR/DCL-165	DCL165	4216/5	FL-165
	BLR/DCL-165S	DCL165s	4216/5S	SD-165
	BLR/DCL-166	DCL166		
	BLR/DCL-167	DCL167		SD-167
	BLR/DCL-166S	DCL166s		SD-166
	BLR/DCL-303	DCL303	4230/3	FL-303
	BLR/DCL-303S	DCL303s	4230/3S	SD-303
	BLR/DCL-304	DCL304	4230/4	FL-304
	BLR/DCL-304S	DCL304s	4230/4S	SD-304
	BLR/DCL-305	DCL305	4230/5	FL-305
	BLR/DCL-305S	DCL305s	4230/5S	SD-305
	BLR/DCL-306	DCL306		
	BLR/DCL-306S	DCL306s		
	BLR/DCL-307S	DCL307s		SD-307
	BLR/DCL-309S	DCL309s		SD-309
	BLR/DCL-413	DCL413		FL-413
	BLR/DCL-414	DCL414		FL-414
	BLR/DCL-414S	DCL414s		SD-414
	BLR/DCL-415	DCL415		FL-415
	BLR/DCL-415S	DCL415s	4241/5S	SD-415
	BLR/DCL-417S	DCL417s	4241/7S	SD-417
	BLR/DCL-419S	DCL419s		
	BLR/DCL-604S	DCL604s	4275/4S	
	BLR/DCL-607S	DCL607s	4275/5S	
	BLR/DCL-609S	DCL609s	4275/6S	
	BLR/DCL-757S	DCL757s	4275/7S	
	BLR/DCL-759S	DCL759s	4275/9S	

品名/Item	型号 / Model	Danfoss	EMERSON	PARKER	SPORLAN	CASTEL	CARLY	MULLER
BI-FLOW FILTER DRIER(FOR HEAT PUMP) 双向过滤器 (热泵用)	BLR/BFK-052		BFK-052					
	BLR/BFK-052S		BFK-052S					
	BLR/BFK-053		BFK-053					
	BLR/BFK-053S		BFK-053S					
	BLR/BFK-082	DMB 082	BFK-082	HPC-082			DDCY 082	
	BLR/BFK-0825S	DMB 082S	BFK-0825S	HPC-082-S			DDCY 082S	
	BLR/BFK-083	DMB 083	BFK-083	HPC-083			DDCY 083	A 17388 (HPF-083)
	BLR/BFK-083S	DMB 083S	BFK-083S	HPC-083-S		4608/3S	DDCY 083S	A 17389 (HPF-083)
	BLR/BFK-084	DMB 084	BFK-084	HPC-084			DDCY 084	
	BLR/BFK-084S	DMB 084S	BFK-084S	HPC-084-S		4608/4S	DDCY 084S	
	BLR/BFK-085		BFK-085					
	BLR/BFK-085S		BFK-085S					
	BLR/BFK-163	DMB 163	BFK-163	HPC-163			DDCY 163	A 17390 (HPF-163)
	BLR/BFK-163S	DMB 163S	BFK-163S	HPC-163-S			DDCY 163S	A 17391 (HPF-163S)
	BLR/BFK-164	DMB 164	BFK-164	HPC-164			DDCY 164	A 17983 (HPF-164)
	BLR/BFK-164S	DMB 164S	BFK-164S	HPC-164-S		4616/4S	DDCY 164S	A 17392 (HPF-164S)
	BLR/BFK-165	DMB 165	BFK-165	HPC-165		4616/5S	DDCY 165	A 17984 (HPF-165)
	BLR/BFK-165S	DMB 165S	BFK-165S	HPC-165-S		4616/7S	DDCY 165 S/MMS	A 17985 (HPF-165)
	BLR/BFK-167S		BFK-167S					
	BLR/BFK-303	DMB 303	BFK-303					
BLR/BFK-303S		BFK-303S						
BLR/BFK-304	DMB 304	BFK-304	HPC-304					
BLR/BFK-304S	DMB 304S	BFK-304S	HPC-304-S					
BLR/BFK-305	DMB 305	BFK-305	HPC-305			DDCY 305		
BLR/BFK-305S	DMB 305S	BFK-305S	HPC-305-S			DDCY 305 S/MMS		
BLR/BFK-306		BFK-306						
BLR/BFK-306S		BFK-306S	HPC-306-S					
BLR/BFK-307S	DMB 307S	BFK-307S	HPC-307-S			DDCY 307S		
BLR/BFK-309S		BFK-309S	HPC-308-S					
SUCTION LINE FILTER DRIER 吸气过滤器	BLR/ASK 165S-VV		ASK 165S-VV-HH					
	BLR/ASK 166S-VV		ASK 166S-VV-HH					
	BLR/ASK 167S-VV		ASK 167S-VV-HH					
	BLR/ASK 306S-VV		ASK 306S-VV-HH					
	BLR/ASK 307S-VV		ASK 307S-VV-HH					
	BLR/ASK 309S-VV		ASK 309S-VV-HH					
	BLR/ASF-11S4		ASF 11S4					
	BLR/ASF-11S5		ASF 11S5					
	BLR/ASF-28S7		ASF 28S7					FDS-167-TT
	BLR/ASF-28S9		ASF 28S9					FDS-168-TT
	BLR/ASF-28S3-VV		ASF 28S3-VV					
	BLR/ASF-28S4-VV		ASF 28S4-VV		SF-114			FDS-164-TT
	BLR/ASF-35F5-VV		ASF 35F5-VV					
	BLR/ASF-35S5-VV		ASF 35S5-VV		SF-115			FDS-165-TT
	BLR/ASF-45F3-VV		ASF 45F3-VV					
	BLR/ASF-45S6-VV		ASF 45S6-VV		SF-286-T			
	BLR/ASF-45S7-VV		ASF 45S7-VV		SF-287-T			
	BLR/ASF-50S9-VV		ASF 50S9-VV		SF-289-T			FDS-309-TT
	BLR/ASF-64S17-VV		ASF 64S17-VV		SF-64170T			
	BLR/ASF-64S21-VV		ASF 64S21-VV		SF-6421-T			
	BLR/ASF-75S11-VV		ASF 75S11-VV		SF-4811-T			
	BLR/ASF-75S13-VV		ASF 75S13-VV		SF-4813-T			
	BLR/SSR-283T							
	BLR/SSR-284T							
	BLR/SSR-285T							
BLR/SSR-286T								
BLR/SSR-287T								
BLR/SSR-289T								
BLR/SSR-2811T								
BLR/SSR-2813T								

品名/Item	型号 / Model	Danfoss	EMERSON	PARKER
LIQUID LINE BURNOUT FILTER DRIER 烧毁过滤器	BLR/BOK--082-HH		BOK-082-HH	C-082-HH
	BLR/BOK--083-HH		BOK-083-HH	C-083-HH
	BLR/BOK--082SH			
	BLR/BOK--083SH			
	BLR/BOK--162-HH		BOK-162-HH	C-162-FM-HH
	BLR/BOK--162S-HH			C-162-S-HH
	BLR/BOK--163-HH		BOK-163-HH	C-163-HH
	BLR/BOK--163S-HH		BOK-163S-HH	C-163-S-HH
	BLR/BOK--164-HH		BOK-164-HH	C-164-HH
	BLR/BOK--164S-HH		BOK-164S-HH	C-164-S-HH
	BLR/BOK--165-HH		BOK-165-HH	C-165-HH
	BLR/BOK--165S-HH		BOK-165S-HH	C-165-S-HH
	BLR/BOK--303-HH		BOK-303-HH	C-303-HH
	BLR/BOK--304-HH		BOK-304-HH	C-304-HH
	BLR/BOK--304S-HH		BOK-304S-HH	C-304-S-HH
	BLR/BOK--305-HH		BOK-305-HH	C-305-HH
	BLR/BOK--305S-HH		BOK-305S-HH	C-305-S-HH
	BLR/BOK--414-HH		BOK-414-HH	C-414-HH
	BLR/BOK--415-HH		BOK-415-HH	C-415-HH
	BLR/BOK--415S-HH		BOK-415S-HH	
	BLR/BOK--417S-HH		BOK-417S-HH	C-417-S-HH
	BLR/DAS 083 SVV	DAS 083 sVV	SFD 08S3-VV	
	BLR/DAS 084 SVV	DAS 084 sVV	SFD 08S4-VV	
	BLR/DAS 085 SVV	DAS 085 sVV	SFD 08S5-VV	
	BLR/DAS 086 SVV	DAS 086 sVV	SFD 08S6-VV	
	BLR/DAS 164 SVV	DAS 164 sVV		
	BLR/DAS 16S SVV	DAS 16s sVV		
	BLR/DAS 166 SVV	DAS 166 sVV		
	BLR/DAS 167 SVV	DAS 167 sVV		
	BLR/DAS 169 SVV	DAS 169 sVV		
BLR/DAS 305 SVV	DAS 305 sVV			
BLR/DAS 306 SVV	DAS 306 sVV			
BLR/DAS 307 SVV	DAS 307 sVV			
BLR/DAS 309 SVV	DAS 309 sVV			
BLR/DAS 417 SVV	DAS 417 sVV			
BLR/DAS 419 SVV	DAS 419 sVV			
BLR/DAS 607 SVV	DAS 607 sVV			
BLR/DAS 609 SVV	DAS 609 sVV			
BLR/DAS 083VV	DAS 083VV			
BLR/DAS 084VV	DAS 084VV			
BLR/DAS164VV	DAS164VV			
BLR/DAS165VV	DAS165VV			

品名/Item	型号 / Model	GVN	ESK	Danfoss	EMERSON	PARKER	
Replaceable steel liquid and suction filter drier 可拆式液管干燥过滤桶	BLR/STAS-485T	SFDS-16		DCR 0845s(023U7250)	STAS-485T	VS485	
	BLR/STAS-487T	SFDS-22	FT1-22	DCR 0487s(023U7251)	STAS-487T	VS487	
	BLR/STAS-489T	SFDS-28	FT1-28	DCR 0489s(023U7253)	STAS-489T	VS489	
	BLR/STAS-4811T	SFDS-35	FT1-35	DCR 04811s(023U7254)	STAS-4811T	VS4811	
	BLR/STAS-4813T	SFDS-42	FT1-42	DCR 04813s(023U7255)	STAS-4813T	VS4813	
	BLR/STAS-4811S-V*	SFDS-35					
	BLR/STAS-4813S-V*	SFDS-42					
	BLR/STAS-4817S-V*	SFDS-54			DCR 04817s(023U7257)	VS4817	
	BLR/STAS-4821S-V*	SFDS-66			DCR 04821s(023U7276)	VS4821	
	BLR/STAS-4824T						
	BLR/STAS-4825T					VS4825	
	BLR/STAS-967T	DFDS-22	FT2-35/22		DCR 0967s(023U7258)	STAS-967T	VS967
	BLR/STAS-969T	DFDS-28	FT2-35/28		DCR 0969s(023U7260)	STAS-969T	VS969
	BLR/STAS-9611T	DFDS-35	FT2-35		DCR 09611s(023U7261)	STAS-9611T	VS9611
	BLR/STAS-9613T	DFDS-42	FT2-51/42		DCR 09613s(023U7262)	STAS-9613T	VS9613
	BLR/STAS-9617T	DFDS-54			DCR 09617s(023U7264)	STAS-9617T	VS9617
	BLR/STAS-9617S-V*	DFDS-54					
	BLR/STAS-9621S-V*	DFDS-66					VS9621
	BLR/STAS-9624						
	BLR/STAS-9625S-V*	DFDS-80					VS9625
	BLR/STAS-1449T	TFDS-28			DCR 1449s(023U7265)	STAS-1449T	VS1449
	BLR/STAS-14411T	TFDS-35			DCR 14411s(023U7267)	STAS-14411T	VS14411
	BLR/STAS-14413T	TFDS-42			DCR 14413s(023U7269)	STAS-14413T	VS14413
	BLR/STAS-14417T	TFDS-54			DCR 14417s(023U7270)	STAS-14417T	VS14417
	BLR/STAS-14421T						VS14421
	BLR/STAS-14424T						
	BLR/STAS-14425T						VS14425
	BLR/STAS-19211T	FFDS-35	FT4-54/35			STAS-19211T	VS19211
	BLR/STAS-19213T	FFDS-42	FT4-54/42		DCR 19213s(023U7272)	STAS-19213T	VS19213
	BLR/STAS-19217T	FFDS-54	FT4-54		DCR 19217s(023U7274)	STAS-19217T	VS19217
	BLR/STAS-19221T						VS19221
	BLR/STAS-19224T						
BLR/STAS-19225T							
Filter Drier Core 过滤芯	BLR/D-48			48DN/DC (80%aluminum+20%molecular)	D-48		
	BLR/H-48			48DU/DM(100% molecular)	H-48		
	BLR/W-48-HH			48-DA	W-48-HH	PCK-48HH	
	BLR/F-48			48-F	F-48	PCK-48	
	BLR/H-100				H-100	PCK-100	
	BLR/W-100-HH				W-100-HH		
	BLR/F-100				F-100		
	BLR/S-48				S-48		

品名/Item	型号 / Model	SPORLAN	HENRY	CASTEL	CARLY		MULLER	
					Suction Line	Liquid Line		
Replaceable steel liquid and suction filter drier 可拆式液管干燥过滤桶	BLR/STAS-485T	C-R425-G	SRC-485	4411/5AF		BCY 485 S/MMS	A 18583	
	BLR/STAS-487T	C-R427-G	SRC-487	4411/7AF		BCY 487 S	A 18584	
	BLR/STAS-489T	C-489-G	SRC-489	4411/9AF	ACY 489 S	BCY 489 S	A 18585	
	BLR/STAS-4811T	C-4811-G	SRC-4811	4411/11AF	ACY 4811 S/MMS	BCY 4811 S/MMS	A 18586	
	BLR/STAS-4813T	C-4813-G	SRC-4813	4411/13AF	ACY 4813 S	BCY 4813 S	A 18587	
	BLR/STAS-4811S-V*							
	BLR/STAS-4813S-V*							
	BLR/STAS-4817S-V*		SRC-4817	4411/17AF	ACY 4817 S/MMS	BCY 4817 S/MMS	A 18588	
	BLR/STAS-4821S-V*		SRC-4821	4411/21AF	ACY 4821 S			
	BLR/STAS-4824T							
	BLR/STAS-4825T					ACY 4825 S		
	BLR/STAS-967T	C-967-G	SRC-967	4412/7AF		BCY 967 S	A 18589	
	BLR/STAS-969T	C-969-G	SRC-969	4412/9AF		BCY 969 S	A 18590	
	BLR/STAS-9611T	C-9611-G	SRC-9611	4412/11AF		BCY 9611 S/MMS	A 18591	
	BLR/STAS-9613T	C-9613-G	SRC-9613			BCY 9613 S	A 18592	
	BLR/STAS-9617T		SRC-9617	4412/17AF			A 18593	
	BLR/STAS-9617S-V*					ACY 9617 S/MMS	BCY 9617 S/MMS	
	BLR/STAS-9621S-V*		SRC-9621			ACY 9621 S		
	BLR/STAS-9624							
	BLR/STAS-9625S-V*					ACY 9625 S		
	BLR/STAS-1449T	C-1449-G	SRC-1449	4413/9AF		BCY 1449 S	A 18604	
	BLR/STAS-14411T	C-14411-G	SRC-14411	4413/11AF		BCY 14411 S/MMS	A 18605	
	BLR/STAS-14413T	C-14413-G	SRC-14413	4413/13AF		BCY 14413 S	A 18606	
	BLR/STAS-14417T		SRC-14417			ACY 14417 S/MMS	BCY 14417 S/MMS	A 18607
	BLR/STAS-14421T		SRC-14421			ACY 14421 S		
	BLR/STAS-14424T							
	BLR/STAS-14425T					ACY 14425 S		
	BLR/STAS-19211T	C-19211-G	SRC-19211	4414/11AF			A 18608	
	BLR/STAS-19213T	C-19213-G	SRC-19217	4414/13AF		BCY 19213 S	A 18609	
	BLR/STAS-19217T	C-19217-G	SRC-19217	4414/17AF	BCY 19217 S/MMS	BCY 19217 S/MMS	A 18610	
	BLR/STAS-19221T		SRC-19221			BCY 19221 S		
	BLR/STAS-19224T							
BLR/STAS-19225T					BCY 19225 S			
Filter Drier Core 过滤芯	BLR/D-48			4490/AB			48-CGM	
	BLR/H-48			4490/B			48-CGH	
	BLR/W-48-HH			VS-48SC				
	BLR/F-48			VS-48F				
	BLR/H-100			VS-100H	4491/A			
	BLR/W-100-HH							
	BLR/F-100							
	BLR/S-48							