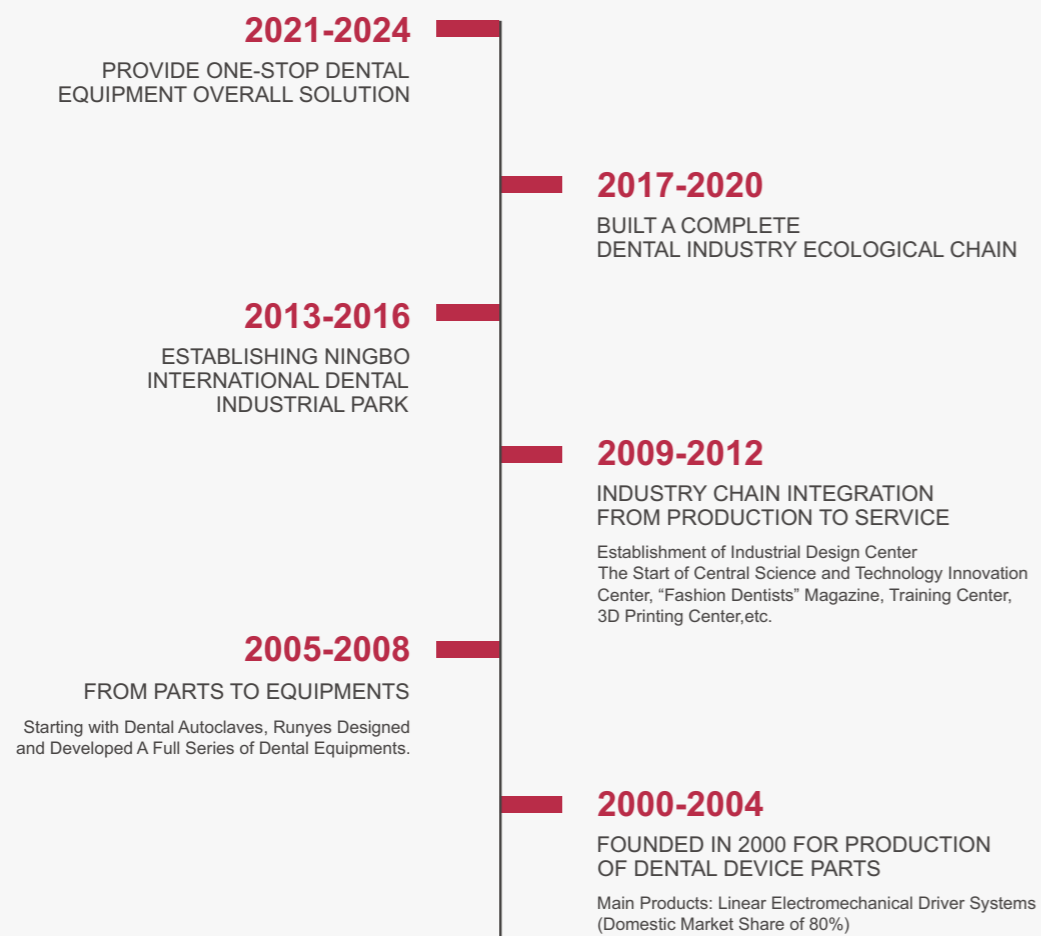


YOUR ONE-STOP SOLUTION

OUR STORY



Runyes Medical Instrument Co.,Ltd.
Add:No. 456, Tonghui Road, Jiangbei Investment & Pioneering Park C, Ningbo,China
Tel:+86-574-27709922 Fax:+86-574-27709923 Http://en.runyes.com
E-mail:runyes@runyes.com

Revision: 202306



Facebook



Instagram

Perfect your Clinic!



CONTENTS

- CARE-33
- CARE-33 WITH MOBILE DOCTOR STATION
- CARE-33C WITH SMALLER SIDE BOX
- CARE-33B FOR KIDS
- CARE-22
- CARE-11
- DENTAL OIL-FREE AIR COMPRESSOR
- SUCTION UNIT



CARE 33

INTEGRATED DENTAL UNIT

Become Gorgeous Since Meeting It

This is an ideal dental chair for many dentists, with enviable complete functions and stylish appearance.



CARE 33U

INTEGRATED DENTAL UNIT

Customized Configuration

The new CARE 33 keeps improving the manufacturing process. While retaining the powerful functions of the original CARE 33, it also adopts DCI technology to upgrade the core components in a comprehensive way, bringing a more comfortable experience to doctors and patients.

The LED lights imported from American DCI can be controlled by induction or manually. There are white and yellow light sources to choose from. The seat cushion system imported from the United States DCI ensures patients a better experience.



LED Light imported from American DCI

The damping type hanging rack is clean and hygienic, greatly avoiding accidental equipment falling

Intuitive and visual temperature display
Temperature available to be adjusted

Integrated X-Ray viewer

Emergency button
Safer operation

The three-axis positioning adjustment lamp, can be flexibly positioned, always aiming at the patient's mouth, and providing a high-quality operation light source.

The multi-angle adjustable headrest can be adjusted quickly and easily with just one hand

The unique luxury balance arm design highlights the product character and pursues the perfect combination of stability and smoothness

Intergrated X-Ray viewer as optional

The hanger can be rotated 90 degrees to adjust the position according to the doctor's habits

CARE 33D INTEGRATED DENTAL UNIT

A More Fluent Workflow

The customizable function of the foot pedal is greatly helpful to the assistant's operation, better to match the work flow, and bid farewell to the busy era.

The handpeices shown in the picture are optional.

Artificial-Leather Options



CARE 33

SERIES DENTAL UNIT

Simply But Extraordinarily Designed For You

Extending the ideal treatment effect from the smooth treatment process, Runyes split series dental chair cooperates with the mobile treatment cart to provide more flexible space, thereby providing doctors, patients and assistants with a more comfortable treatment environment and improving treatment efficiency .



CARE 33M

FOR MORE POSSIBILITIES

Free Choices & Match

More components can be freely selected according to your usage habits. Enjoy the convenience brought by the exclusive formulation every moment.

Options:

1. Care-33 : Dental unit only;
2. Care-33D M1 : Dental unit with mobile cart and and DCI light;
3. Care-33D M2 : Dental unit with mobile cart and surgical light.

Artificial-Leather Options



The LED dental light can be controlled by induction or manually. It has a blue light cut-off function. There are white and yellow light sources to choose from, which can prevent the light-curing resin from curing in advance.



The multi-angle adjustable headrest can be easily and quickly adjusted with only one hand.



Both strong and weak suction have a time-delay function to avoid pipeline blockage.



SIMPLE BUT EFFECTIVE OPERATIONS

Equipped with quick plug-in interface for external water and air pipelines, and the water level bar can control the external water flow.

Hang rack, with humanized design, can be rotated 30 degrees left and right, 45 degrees up and down, so as to be adjusted according to the needs of the dentists.

External power supply, convenient for implant machines and other equipment to directly connect power supply without additional wiring.



KY-P136 Surgical Light



Multi-function Operation Panel



Detachable Water Storage Bottle



External Power Supply

CARE 33C U

INTEGRAL DENTAL UNIT

Up mounted Dental Unit with smaller side box

Smaller side box looks more simple, spittoon can be rotated by 90 degree, more flexiable and easier for patients.

Artificial-Leather Options



LED Light imported from American DCI



The damping type hanging rack is clean and hygienic, greatly avoiding accidental equipment falling



Intuitive and visual temperature display
Temperature available to be adjusted

Intergrated X-Ray viewer



Emergency button
Safer operation



CARE 33C D

INTEGRATED DENTAL UNIT

Down mounted Dental Unit
with smaller side box



With linkage mechanism and
chair lifting safety protection
system

The unique luxury balance
arm design highlights the
product character and
pursues the perfect
combination of stability and
smoothness

The hanger can
be rotated 90
degrees to adjust
the position
according to the
doctor's needs

Intergrated X-Ray
viewer as optional



CARE 33B

INTEGRATED DENTAL UNIT

This Is A Dental Chair Specially Designed
For Children's Oral Treatment



CARE 33B

INTEGRATED DENTAL UNIT

Fun, Comfortable, Safe & Practical

The machine is developed, designed and manufactured from the perspective of children, in line with children's ergonomics, and is suitable for dental treatment of children under 12.

Adopting the original imported side box of American DCI, the door cover can be opened on both sides to fully present the internal water, air and electric lines, which is convenient for maintenance. The internal water and air pipelines are isolated from the electric circuit system, ensuring the safety during use. New noble sofa cushion technology makes it more comfortable.

The dental handpiece shown in the picture is for option.



By turning off the main switch of water, gas and electricity to prevent accidents at night and eliminate potential safety hazards.

The dental handpiece tube flushing and disinfection system can be chosen to flush each dental handpiece tube separately or at the same time, which can quickly clean the inner wall of the dental handpiece catheter and more effectively protect the health of dentists, assistants and patients.

The angle of each hang rack can be adjusted independently to meet the operation habits of different dentists to achieve the optimal efficiency.



CARE 33B

INTEGRATED DENTAL UNIT

Artificial-Leather Options

- Standard with American stitched leather (I13)
- The color of this picture is I13

CARE 22

INTEGRAL DENTAL UNIT

As Cozy As A Coach

Big data derived from patient experience has helped us improve the comfort of dental unit.

The new recliner design is suitable for patients with different shape.

The upgrade of the lifting system provides more height options, so that children over 6 years old can easily get on and off the dental unit by themselves



CARE 22U

INTEGRATED DENTAL UNIT

Safe, Reliable, Comfortable

Care22 humanized safety design
Strict production technology, with the embodiment of complete functions, provides both doctors and patients with relax and comfort.

Artificial-Leather Options



SL6-LED light

LED light, Control by sensor
provide more convenient operation

The multi-angle adjustable headrest can be adjusted quickly and easily with just one hand

The unique luxury balance arm design highlights the product character and pursues the perfect combination of stability and smoothness

Intergrated X-Ray viewer as optional

CARE 22D

INTEGRATED DENTAL UNIT



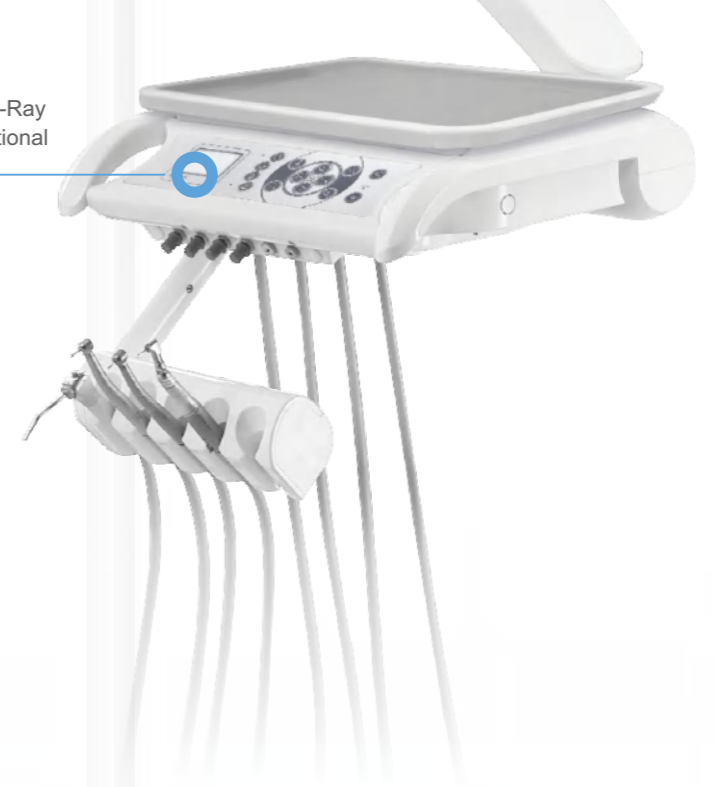
The unique luxury balance arm design highlights the product character and pursues the perfect combination of stability and smoothness

With linkage mechanism and chair lifting safety protection system



The hanger can be rotated 90 degrees to adjust the position according to the doctor's needs

Integrated X-Ray viewer as optional



CARE 11D

INTEGRATED DENTAL UNIT



More Accurate Motions With Easier Operation



Ergonomic design



Triple-Axis-Movable LED
Operating Light



Self-Cleaning Cuspidor



Water purification system

CARE-11U

INTEGRATED DENTAL UNIT

The multi-angle adjustable headrest can be adjusted quickly and easily with just one hand

The damping type hanging rack is clean and hygienic, greatly avoiding accidental equipment falling

Well-rounded Choice Of Fashion

CARE11 is an excellent integrated dental unit among all with the same type. It inherits the development concept of Runyes and incorporates fashion elements. It becomes the most reliable and ideal working partner for dentists in diagnosis and treatment.

The dental handpiece shown is for option.

With linkage mechanism and chair lifting safety protection system

CARE 11D

INTEGRATED DENTAL UNIT

Artificial-Leather Options



SL6-LED light

LED light, Control by sensor provide more convenient operation

Both strong and weak suction have a delay function to avoid pipeline blockage

Intergrated X-Ray viewer as optional

The hanger can be rotated 90 degrees to adjust the position according to the doctor's habits

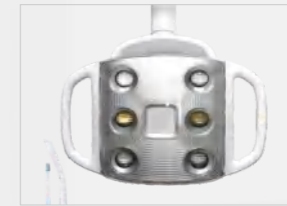




Dental Unit Optional Accessory



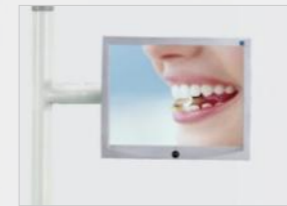
DCI Lamp



LED Light Medlux



Surgical Lamp



Monitor Arm



Nurse Stool
(optional for the same color)



Neck Rest & Waist Rest
(optional for the same color)



State-of-the-art Disinfection System

Maintaining a clean and hygienic dental practice is essential for the health and safety of your patients. Our advanced Disinfection System is here to revolutionize the way you sterilize and disinfect your dental chairs.

With our cutting-edge technology, you can now effortlessly and effectively eliminate harmful bacteria and viruses in just minutes, which is designed to provide a thorough and complete disinfection of internal pipes with cleaning agent. Not only does our Dental Chair Disinfection System save you valuable time, but it also ensures the highest level of safety for your patients, providing a sterile environment for every dental procedure.

Upgrade your dental practice to the next level of hygiene and professionalism. Don't compromise on cleanliness and safety to feel and experience the future of dental care.



One-Switch To Shut Off

Experience the ease and simplicity of controlling the water, air and power system with a single switch, just one button to rule and disable them all, with which the clinic can prevent the unit from any water or air leakage in the absence of operation.



DENTAL OIL-FREE AIR COMPRESSOR

Oil-free Technology | Powerful & Quiet



Introduction

Clean and dry air is very important in actual clinical treatment environment and is the basis for ensuring the health of patients. Therefore, the choice of dental compressor is very important for hospitals or Labs.

The right choice of dental compressor can satisfy all air compressor needs for current or the future. Runyes Oil-Free Air Compressor can guarantee every need of users. It is the best choice for customers, no matter from the view of performance and investment, or product integrity and quality.

Low Noise

Runyes dental electric oil-free air compressor with excellent design reduces the operating noise to 70 decibels. High efficiency design and perfect cooling system make it more attractive.

Oil-free Compression

Provide oil-free compressed air, which is more suitable for dental treatment requirements.

Safer to Use With Dual Overload Protection

Each machine is equipped with a safety valve and built-in overheat protector to strengthen the protection of the motor.

Cylindrical Vent

The overall pump, with large holes, has good and quick heat dissipation.

Triple Filtration Device

Ensure safe, stable, continuous and efficient operation.



Model	Voltage Frequency	Rating Power	Gas tank volume	0.4Mpa Displacement	Max pressure	Rotating Speed	Noise	Packing Size	GW	Pump Quantity	Matchable dental chairs
GIANT-30	AC220V 50Hz	0.6	25	50	0.8	1400	60	42X42X65	22	1	One for one
GIANT-35	AC220V 50Hz	1.2	50	100	0.8	1400	60	74X44X73	42	2	One for two
GIANT-40	AC220V 50Hz	1.54	60	140	0.8	1400	60	78X48X76	46	3	One for three
GIANT-45	AC220V 50Hz	2.2	70	210	0.8	1400	65	86X54X78	66	4	One for five
GIANT-50	AC220V 50Hz	3.1	135	280	0.8	1400	65	110X58X80	100	5	One for eight
GIANT-55	AC220V 50Hz	4.7	210	420	0.8	1400	67	165X65X85	160	6	One for twelve

SUCTION UNIT

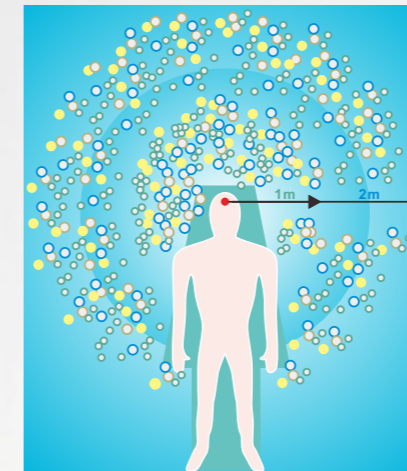
Safer | More Efficient



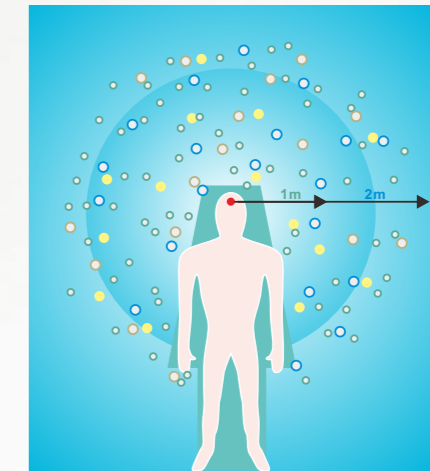
Solve Pollution From The Root

If the bacteria can be seen in the clinic, no one will ignore the pathogenic bacteria that exceed the standard around the dental chair. During dental surgery, a large amount of bacterial aerosol will be generated around the dental chair, and the way of air circulation cannot improve such situation.

The only way is to solve the pollution from the original source. Adopting the suction machine with a negative pressure semi-dry, two-stage separation or any other advanced technology, with the air flow of 300 liters per minute, can instantly suck away the aerosols in the patient's mouth, thereby eliminating bacterial contamination from the root.



Without negative pressure system



With negative pressure system

Enroll Suction Unit

ENROLL-01	The aspiration power of ENROLL-01 is 300 litres / min. It is designed as a suction unit for one dental chair.
ENROLL-05	It can be connected up to 5 treatment sites and can be used for 3 dentalchairs at most.
ENROLL-08	It can be connected up to 8 treatment sites and can be used for 6 dental chairs at most.

Specification model	It can supply up to	It can be used by up to	Suction force	Maximum vacuum	Host voltage	Rated current	Vacuum regulation
ENROLL-01	1treatment site	1dental unit	300L/min	-37KPa	AC230V	3.7~4.4A	-20KPa
ENROLL-05	5treatment site	3dental unit	900L/min	-37KPa	AC230V	3.5~4A	-20KPa
ENROLL-08	8treatment site	6dental unit	1500L/min	-37KPa	AC230V	4.5~5A	-20KPa

Specification model	Noise	Frequency	Motor power	Motor speed	Inverter power	Intake tube size	Net weight	Size
ENROLL-01	50DB	50~60Hz	550W	3440 rpm	—	32mm	32Kg	330×540×620mm
ENROLL-05	59DB	0~70Hz	630W	3980 rpm	750 w	32mm	33Kg	410×510×610mm
ENROLL-08	61DB	0~65Hz	1300W	3740 rpm	2200 w	32mm	37Kg	410×510×630mm