

whale dynamic

Cloud Service Introduction

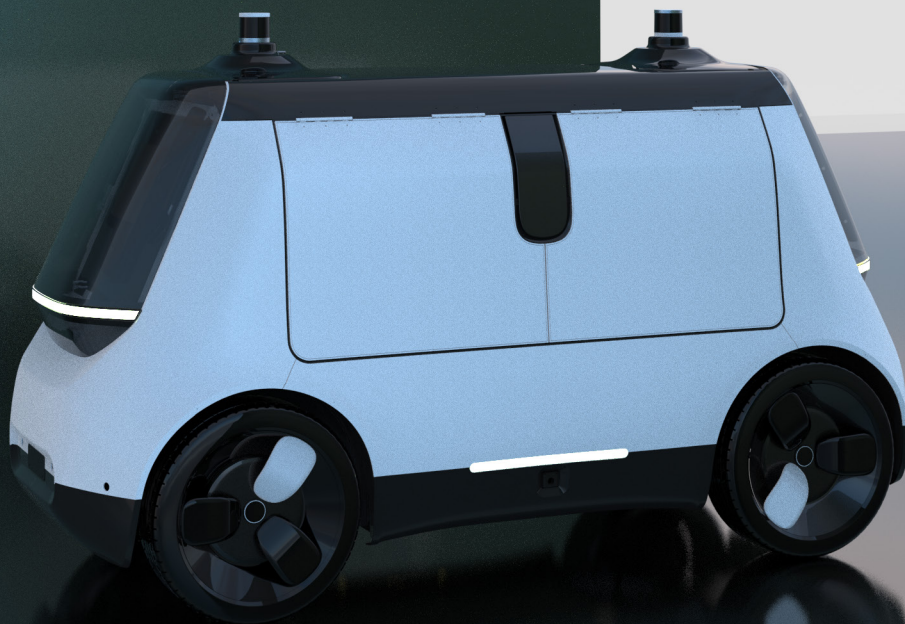


Table of Contents

Cloud service	03
1.SaaS service	03
2.Rbac permission management	04
3.Monitoring center	05
4.Site picker	06
5.Operation route planning	06
6.Unmanned logistics	07
7.Unmanned retail	08
8.Remote driving	08
9.Track playback	09

Cloud service

The cloud platform maintains communication with the vehicle through the mqtt protocol and cooperates with autonomous driving to realize services such as unmanned retail and logistics delivery on designated routes. If the vehicle encounters exceptional circumstances such as roadblocks, it can manually avoid obstacles through remote driving and then re-enter autonomous driving to perform follow-up services. Cloud service provide vehicle monitoring and management, it monitors and displays vehicle location, status, execution business, and other data

1.SaaS service

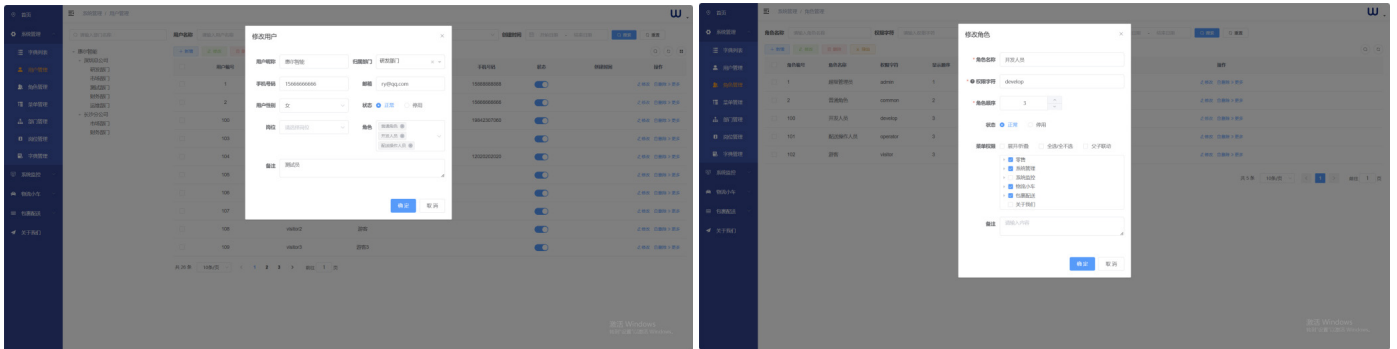
Function description:

After the system adds and allocates system resources to merchants. Merchant managers can add sub-accounts to manage and monitor the vehicle and sell the products.

2.Rbac permission management

Function description:

Rbac permission is a role-based access control mode that realizes the system's access control to users by assigning different roles to users and configuring system resources by roles

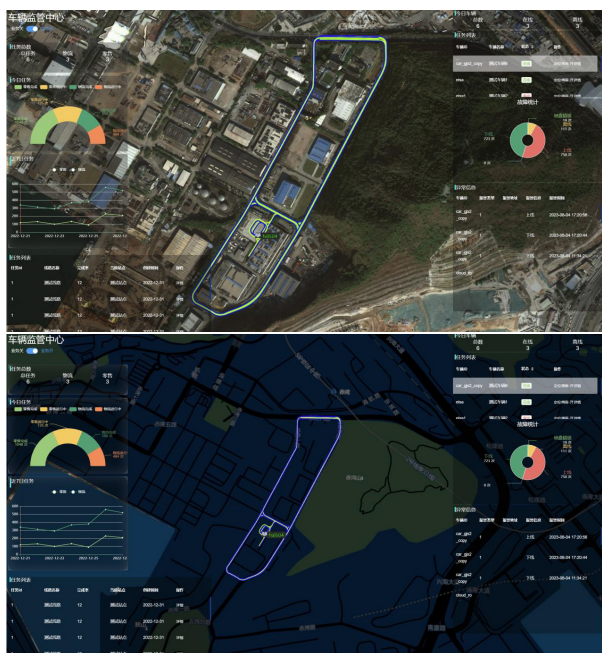


系统管理 / 菜单管理

菜单名称: 请输入菜单名称 状态: 菜单状态

菜单名称	图标	排序	权限标识	跳转路径	状态	创建时间	操作
> 零售		0			正常	2022-12-19 09:41:09	修改 新增 删除
√ 系统管理		1			正常	2022-10-19 14:52:22	修改 新增 删除
字典列表		0		system/dict/data	正常	2022-12-20 15:16:07	修改 新增 删除
√ 用户管理		1	system:user:list	system/user/index	正常	2022-10-19 14:52:22	修改 新增 删除
用户查询		1	system:user:query		正常	2022-10-19 14:52:22	修改 新增 删除
用户新增		2	system:user:add		正常	2022-10-19 14:52:22	修改 新增 删除
用户修改		3	system:user:edit		正常	2022-10-19 14:52:22	修改 新增 删除
用户删除		4	system:user:remove		正常	2022-10-19 14:52:22	修改 新增 删除
用户导出		5	system:user:export		正常	2022-10-19 14:52:22	修改 新增 删除
用户导入		6	system:user:import		正常	2022-10-19 14:52:22	修改 新增 删除
重置密码		7	system:user:resetPwd		正常	2022-10-19 14:52:22	修改 新增 删除
> 角色管理		2	system:role:list	system/role/index	正常	2022-10-19 14:52:22	修改 新增 删除
> 菜单管理		3	system:menu:list	system/menu/index	正常	2022-10-19 14:52:22	修改 新增 删除
> 部门管理		4	system:dept:list	system/dept/index	正常	2022-10-19 14:52:22	修改 新增 删除

3. Monitoring center



Function description:

Real-time display and monitoring of online status, faults, abnormal information, business information, task information, etc., of all vehicles, and the location of vehicles on the high-definition map can be viewed in real-time by switching between different maps.

4. Site picker

Function description:

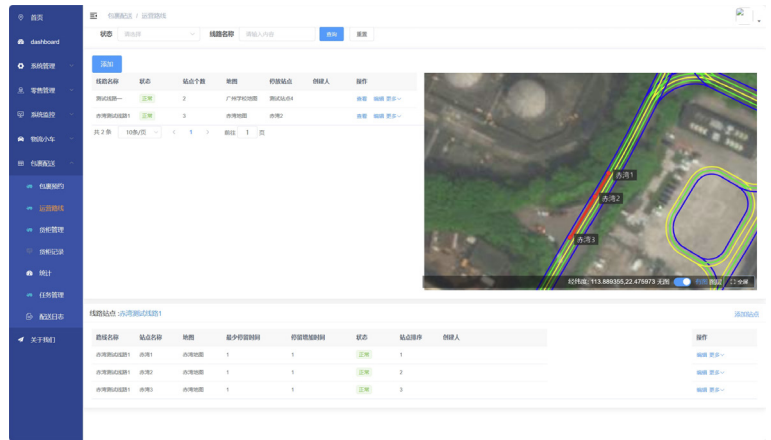
When the vehicle is not turned on, the site coordinates can be selected and saved on the high-definition map through the offline site-picking tool.



5.Operation route planning

Function description:

Through different combination sequences between sites , one can view the real-time execution sequence and results of autonomous driving on a high-definition map.



6.Unmanned logistics

Function description:

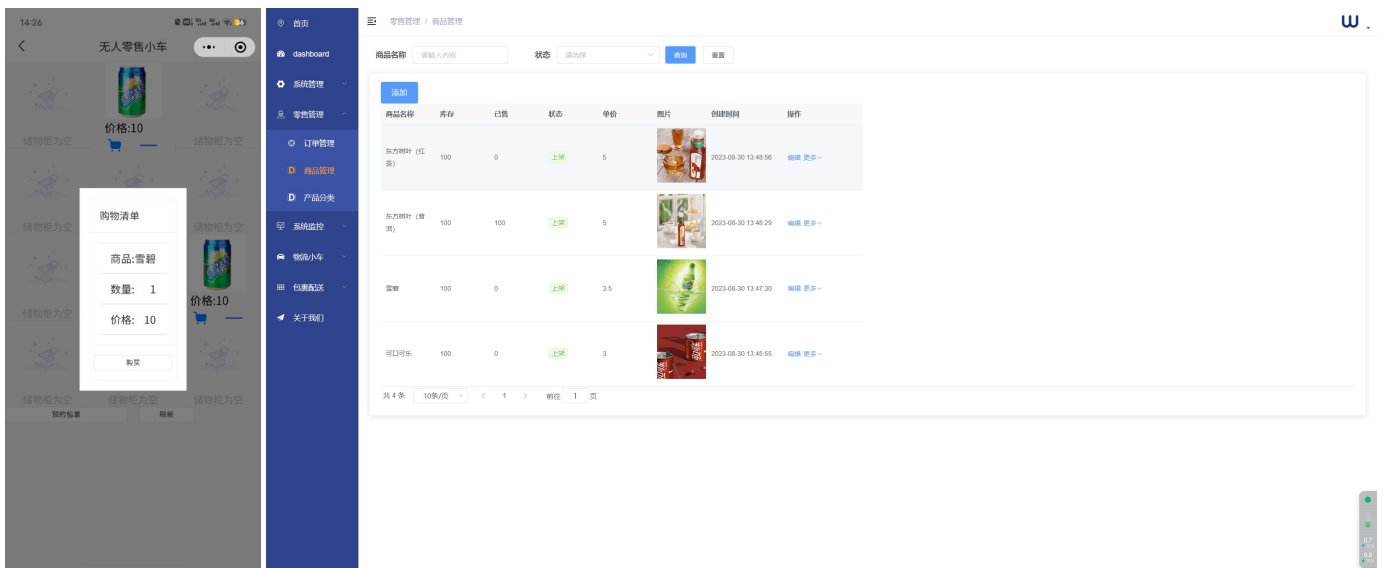
The user makes an appointment for packagedelivery through the mini program. The staffloads the package onto the vehicle and delivers it to the user through the vehicle's autonomous driving function.



7.Unmanned retail

Functional description:

Merchandise will be loaded ,and after the vehicle performs autonomous driving to the designated sales site, the user scans and purchases the goods through the mini program.



8.Remote driving

Function description:

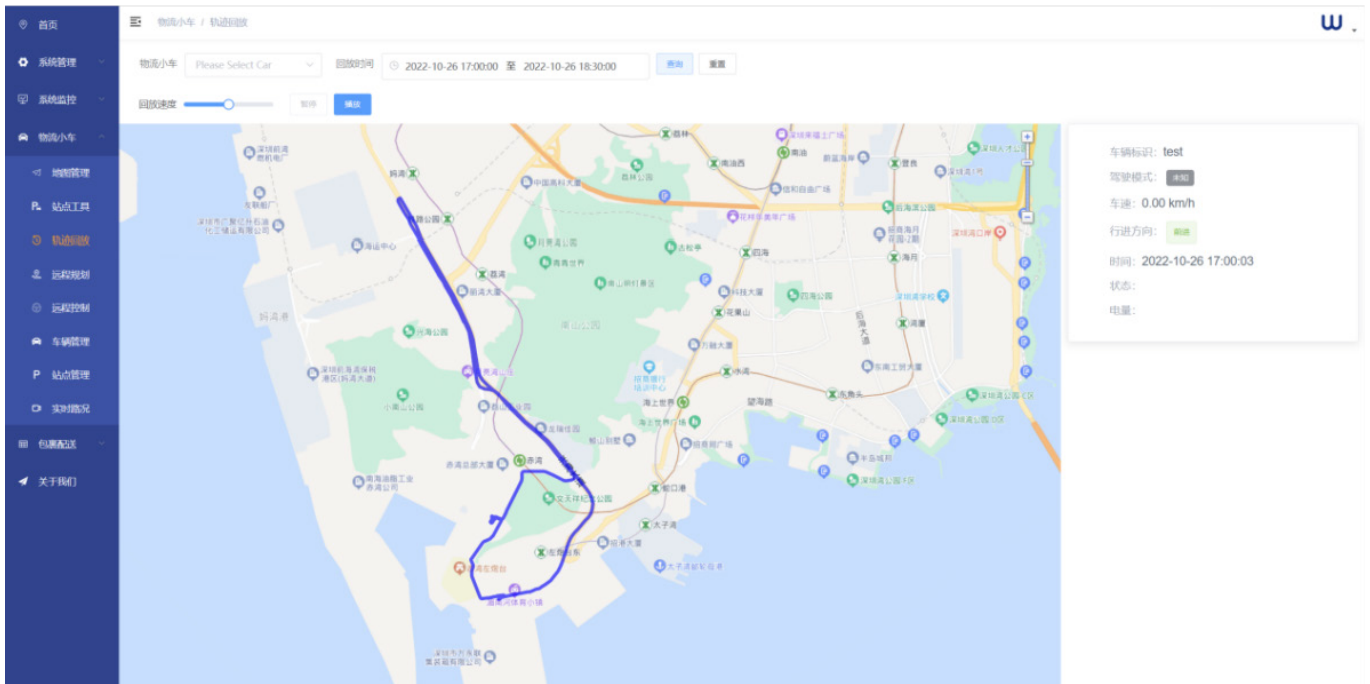
During the vehicle's autonomous driving process,if equipment abnormality or roadblocks cannot be bypassed, the vehicle end will report the remote driving request . The staff can take over the vehicle through the remote driving program. After driving the vehicle to a regular road segment, exiting remote driving allows you to continue with subsequent tasks.



9.Track playback

Function description:

By querying vehicle data for different time periods, one can play the vehicle's driving trajectory.



CONTACT US

Business(China)

86-13612928635
business@whaledynamic.com

Business (international)

86-13652313917
lingzi.s@whaledynamic.com

Enterprise/Financing

86-13538246007
coop@whaledynamic.com



H3-6, Chiwan Base, Nanshan District, Shenzhen
www.whaledynamic.com