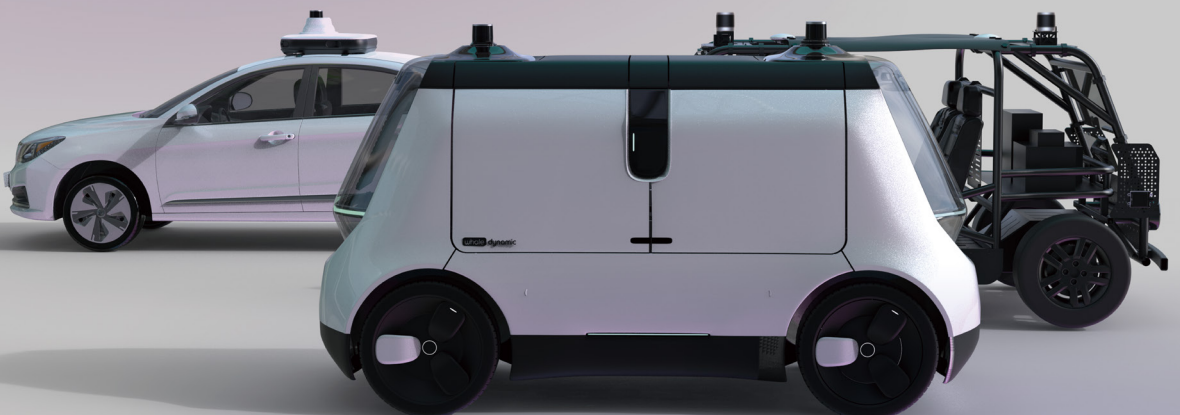


whale dynamic

More Than Autonomous Driving:)



At a glance

Whale Dynamic is a fast-growing L4 autonomous driving company. Our ultimate product is the L4 non-occupant autonomous delivery vehicle, which aims to revolutionize and optimize the process of delivering goods and services.

Whale Dynamic aims to provide efficient, safe, and reliable neighborhood delivery solution in complex environments while minimizing human intervention, benefiting both individuals and society as a whole.



Milestones

- 2018 The Amazing Journey Began
- 2019 L4 passenger vehicle on-road testing & roof-top sensor fusion unit ready
- 2020 Perception, MSF, High-Precision map, P&C Modules ready
- 2021 The official announcement of the L4 autonomous delivery vehicle: WD I
- 2022 Six core technologies upgraded
- 2023 WD II mass production

Product Lines

Core Business Long-term Paid Business

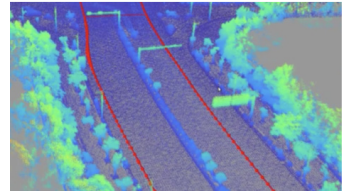
Passenger Vehicle



Autonomous driving Vehicle



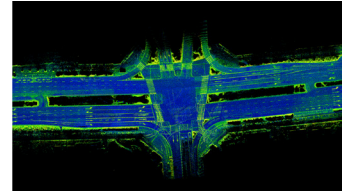
Infrastructure & Software Services



L4 level autonomous driving
Rooftop sensor fusion unit



Drivable Testing Vehicle (DTV)
WD-II



HD Map(Overseas)/
AV Cloud service/AV tool kit services

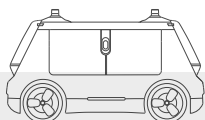
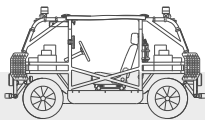
Client

OEMs, autonomous driving and autonomous chip companies

Logistics, retail, schools/parks, government procurement and real estate companies, etc.

Map companies, vehicle operating companies, etc.

Purpose Mapping Testing Validation Deployment



Development Path

- ◆ Whale Dynamic follows SAE L4 passenger vehicle autonomous driving technology standard to develop urban public road autonomous vehicles.
- ◆ Passenger vehicle algorithm verification-with steering wheel chassis transplantation algorithm-urban public roads autonomous vehicle mass production.
- ◆ Alongside with the most advanced international autonomous driving development path, Whale Dynamic is at the forefront of this development path.



Passenger Vehicle



DTV

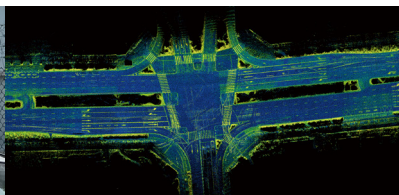


Multi-purpose AV

Six Core Technologies



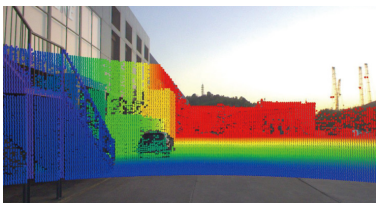
Early-stage Fusion Hardware



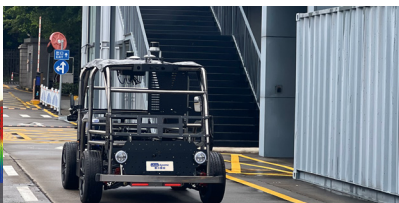
HD Map



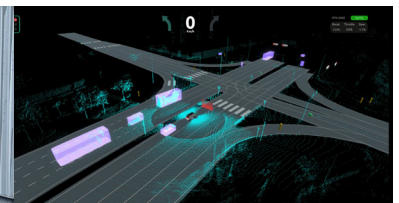
Passenger Vehicle P&C



Proprietary MSF Perception



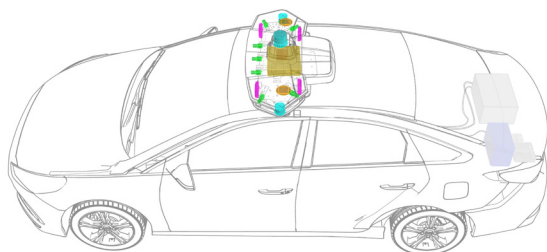
Control-by-wire Chassis



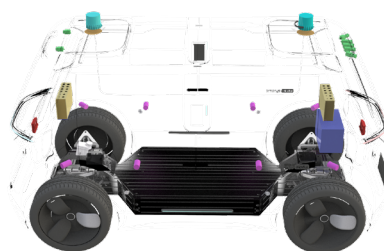
MSF Localization

Hardware closed loop

Passenger vehicle development, autonomous vehicle verification, shared code, and toolchain, to achieve closed-loop development.



- Self-developed/
cooperation
- Fusion box
 - Antenna
 - Camera
 - Integrated navigation
 - Computing element



- Procurement
- MM Radar
 - LiDAR

In terms of the hardware of the autonomous driving scheme, the fusion box is the hardware with independent intellectual property rights and realizes the spatial-temporal synchronization technology, which is one of our core technologies.

Secondly, the integrated navigation, camera module, computing unit, power supply, antenna, and other hardware are customized in cooperation with high-quality suppliers in the industry.

Due to the technical barriers and high research and development costs of lidar and radar, it is currently the mode of external acquisition.

Cooperation with the world's top suppliers

Whale Dynamic has reached cooperative relationships with many top suppliers around the world, which greatly reduces the cost of hardware components. Many hardware devices adopt the form of joint development, which improves the efficiency of R&D and testing, and helps to accelerate the commercialization schedule, thereby generating long-term competitive advantages.



Strong Platform Alliance

Whale Dynamic is the only company in the world so far that has allied with two major autonomous driving ecosystems, the Apollo and the Autoware. The hardware and software stacks from Whale Dynamic are highly recognized by these ecosystems together with global communities. This makes the WD a very influential company in the industry and generates large number of commercial contracts and international cooperation.



Autoware



Proven Record & Market Recognition

Enterprises Clients



Academia clients



OEM Partners



Ecological Partners



Founder & CEO



常宇飞

Yufei Chang

Founder, and CEO of Whale Dynamic .

Postgraduate in nanotechnology , The University of Cambridge, Undergraduate in Materials Science , Imperial College London . Senior Product Manager of Baidu Apollo Team. With many years of experience in autonomous driving development and related products , has led the development of ADAS and L3 autonomous driving . Founded Whale Dynamic in 2018 with elites from Huawei and Chinese Academy of Sciences members.

The keynote speaker of the podcast “Big Horses Talking about Technology”, which has been launched on platforms such as Himalaya and bilibili for nearly a year , with a single episode of up to one million views . Awarded with The 2020 Gen T Asia Top 100 Talents. 36Kr 2022 Global Chinese Elite Power 100" New Business Leader Award.

Project Track



Aeolus_E70



SAIC ID3



BYD Qin Pro



GWM WEY



Geely



Toyota



Urban-road autonomous vehicle



Drivable Testing Vehicle

CONTACT US



Business(China)

86-13612928635
business@whaledynamic.com

Business (international)

86-13652313917
lingzi.s@whaledynamic.com

Enterprise/Financing

86-13538246007
coop@whaledynamic.com

H3-6, Chiwan Base, Nanshan District, Shenzhen

www.whaledynamic.com

