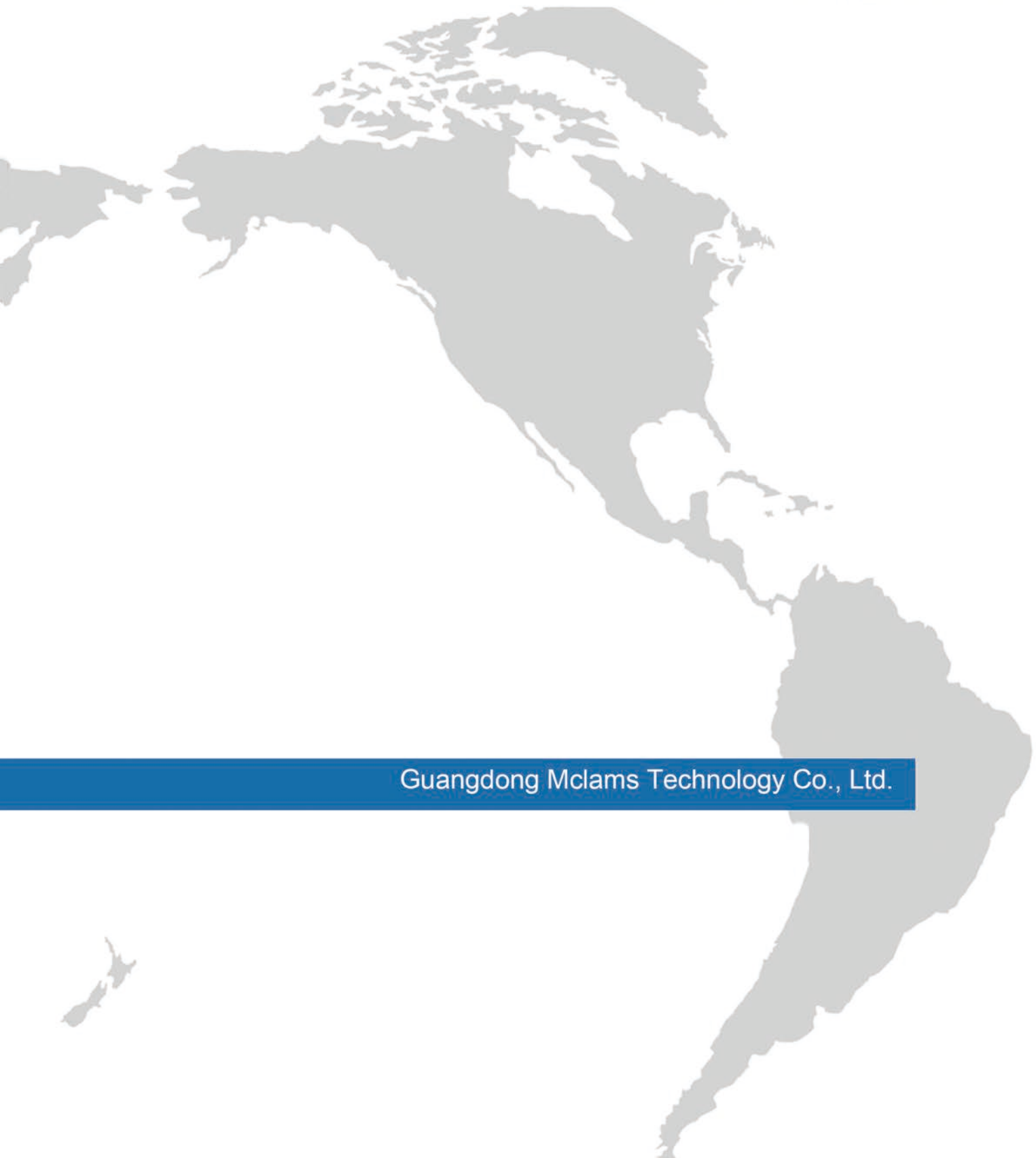


# *Mclam's*

Commercial & Industrial Series



Guangdong Mclams Technology Co., Ltd.

Guangdong Jiake Fan Ventilator Co., Ltd. established in 1984, which had been the branch of state holding enterprise Guangzhou Refrigerator Manufactory is one of the earliest domestic enterprises engaged in ventilation fan manufacture. We has committed ourselves to the development, production, sales and after-sales service of rail-transit air conditioning and ventilation system, electric bus air conditioning, industrial and household environmental-friendly ventilation equipment, central ventilation, fresh air system equipment, dust-removal equipment and other high-tech products.

We have acquired CRCC certification of Ministry of Railways of People's Republic of China, Certification of National High-Tech Enterprise, National Innovation Fund and the Title of Private Science & Technology Enterprise of Guangdong province. Moreover, we have obtained European IRIS Management System Certification of the global authority TUV, European EN15085 Welding Standard Certification, National Fire Service & Ventilation Testing Center Certification, National Wind Tunnel Laboratory Certification, ISO9001:2000 International Quality System Certification, ISO14001 Certification, CE Certification, NF Certification, 3C Certification. We also own more than 20 national patents, 3 invention-patented technology and all kinds of domestic and overseas certifications.

Our railway train ventilation equipment is mainly used in the air conditioning of high-speed train, bullet train, subway, light rail train and other transportation facilities. We keep a good long-term cooperation relationship with many large enterprises at home and abroad and offer air-conditioning and ventilation equipment for more than 100 lines of high-speed rail, light rail and subway in different domestic and overseas cities and areas, including Guangzhou, Beijing, Shanghai, Shenzhen, Tianjin, Chengdu, Changsha, Chongqing, Wuhan, Hefei, Macau, Qinghai-Tibet railway, Qingdao regional railway, Dalian regional railway, Milan, Wellington, Santiago, Amsterdam, Athens, Bangkok, New Delhi, St Paul, Pakistan, Iran, Malaysia, Lima and Tobu railway in Japan.

Our electric bus air conditioning fans are widely used in various types of electric bus air-conditioning & ventilation system. Our company participated in the electric bus air conditioning fan development and production at the earliest and has a long-term cooperative relationship with many domestic automobile air conditioning manufacturers. Our electric bus air conditioning fans also serve the urban transportation of great events, such as the 2008 Beijing Olympic Games, the 2010 Asian Games, the 2011 Shenzhen Universiade and the 2014 Nanjing Youth Olympic Games.

Our industrial fans and fire-fighting series fans are mainly used in smoke abatement, dust exhaust and ventilation equipment of hotels, office buildings, central air conditioning, commercial complexes, kitchen, KTV, villas, commercial housing, hospitals, factories, warehouses, drying & cooling equipment, planting greenhouses, underground parking, clubs, restaurants and etc..

Our central fresh air system can guarantee non-stop work in all kinds of residences in the form of low energy consumption for 24 hours of 365 days a year. The system can bring in the treated fresh air from outdoor while discharges indoor foul air to guarantee good indoor air quality. It can automatically control and adjust air volume according to the actual needs of human body and the indoor environment of activities in order to maximumly reduce energy consumption.

Our central dust collection system is an entirely new way of indoor cleaning, which is an integrated vacuum system made up of dust collection host, pipe network, outlet, hosepipe and brush. Users only need to insert the vacuum hose into the outlet, switch on the handle startup system and then dust, mites and germs will be collected to the host that is far away from the living space through the dust collection pipelines buried in the wall.

Relying on more than 30 years of professional manufacturing experience, we have cultivated a high-quality technical research team who are in charge of fan design, development and manufacture and a group of enterprise management personnel. Our company is characterized by strong technical force, the aided design system equipped with a 3D model, short research and development cycle and the strength of rapid development and manufacture of new products. Our products sell well through domestic and foreign markets for its high tech, high quality and extensive popularity. Xian Transportation University and Guangdong University of Technology provide us professional talents and technical support on the basis of industry-university-research cooperation. In addition, we have a number of technical advisors from colleges and universities, many fan design engineers major in hydrodynamics and international welding engineers and technicians.

Facing the future opportunities and challenges, we will, as always, stick to the concept of "continuous innovation, self-improvement, customer orientation". From customers' demand and depending on our professional technology and experience, we can provide customers with perfect products and services by good capital operation, continuous research and development, a sound marketing network construction and the improving service!





## Team Introduction

In 2003, the company set up a technology research and development department, research and development process to follow the ISO9001: 2008 quality management system, the implementation of the whole process monitoring and management. Thirty-five years of professional manufacturing our company has trained a batch of fan design, development, manufacturing and so on in various aspects of high-quality technical research and development team and the enterprise management personnel. The company is equipped with CAD auxiliary design system, the research and development cycle is short. The company has the ability to develop and manufacture new products in a short time.





## Equipment Introduction

The company has a plant covers about the area of 30,000 square meters, in recent years, imported advanced equipment facility, such as:

Laser cutting equipment and plate work processing equipment;

CNC punching machines;

Shears;

Bending machines;

Wire cutting machines;

Mold machining center;

Welding center;

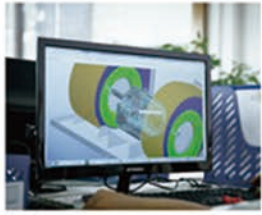
Standard digital ventilator air flow laboratory;

Noise laboratory;

Surface treatment and coating center;



# Production process



## 1 Mechanical design

### 1、 Mechanical design

Base on the 3D-CAD technology, the product is set up according to 3D model with the simulation test, The product structure and performance parameters are analyzed.

## 4 Machining

### 4、 Machining

NC machining of product parts through the program.



## 5 wind wheel assembly

### 5、 Wind wheel assembly

With all kinds of special fixture, the product of the wind wheel and the wind turbine assembly.

## 8 Welding workshop

### 6、 Welding workshop

According to product design drawings, the product is installed.



## 9 Testing

### 9、 Testing

After pass the dimension inspection, vibration test, noise test, electric energy testing, etc., the product will be packaged.



## 2 Sheet metal processing

### 2、 Sheet metal processing

Through computer programming, we reach the highest utilization rate of raw materials, then numerical control processing of raw materials.

## 3 Mould forming

### 3、 Mould forming

Molding of products by means of die.



## 6 Welding workshop

### 6、 Welding workshop

With special fixture, the welding quality is ensured by using the automatic robot for welding, in strict accordance with the EN15085 standard.

## 7 Spraying workshop

### 7、 Spraying workshop

With the electrostatic powder spraying technology, high pressure spray gun powder adhesion in pre-treatment of the surface of the product, then baked with high temperature.



# New fresh air fan

## GF Ventilation duct blower

Fan casing made of sheet metal and spray treatment, high anti-rust performance. Equipped with high-quality motor and forward-curve multi-wing impeller, to achieve high efficiency and high pressure air supply. Used in hotels, shopping malls, offices and residential buildings Ventilation or pipe pressurization.

Model(No.)	Power(W)	Voltage(V)	Rotation(r/min)	Volume(m <sup>3</sup> /h)	Pressure(Pa)	Noise dB(A)	Pipe size(mm)
GF100-2	35	220	2300	280	70	≤62	Φ100
GF100-4	17	220	1250	153	60	≤43	Φ100
GF120-4	33	220	1100	317	50	≤43	Φ150
GF120-2	90	220	2200	633	112	≤65	Φ150
GF150-4	80	220	1380	481	142	≤50	Φ150
	59	220	1100	412	132	≤48	Φ150
GF150-6	50	220	960	334	130	≤47	Φ150
	42	220	800	280	118	≤41	Φ150
GF190-4	200	220	1410	935	139	≤63	Φ200
	160	220	1100	729	120	≤61	Φ200
GF190-6	13	220	960	636	112	≤49	Φ200
	115	220	800	530	103	≤48	Φ200
GF210-4	330	220	1400	1253	167	≤65	Φ200
	290	220	1100	985	145	≤63	Φ200
GF210-6	230	220	960	860	135	≤50	Φ200
	200	220	800	716	125	≤49	Φ200



## GFS Series Plastic split Type Duct Fan

Using a new anti-static, anti-aging engineering plastics, equipped with high-quality motor, low noise, ultra-quiet. For hotels, offices, shopping malls and residential ventilation or pipeline pressure.

Model(No.)	Power(W)	Voltage(V)	Volume(m <sup>3</sup> /h)	Pressure(Pa)	Noise dB(A)	Pipe size(mm)	Usable Area(m <sup>2</sup> )
GFS100L	20	220	150	90	34	Φ100	6~12
GFS100H	25	220	200	95	36	Φ100	8~16
GFS120L	30	220	250	95	38	Φ150	10~20
GFS120H	35	220	300	110	40	Φ150	12~24
GFS150L	45	220	350	120	42	Φ150	14~28
GFS150H	55	220	400	130	45	Φ150	16~32



## DPT Vertical Type Ventilator

Slim cabinet fan, compact structure, ceiling installation; chassis with high-quality steel, fire, corrosion resistance, the world famous brand ball bearings, long-term continuous operation

Single-inlet, multi-bladed Chiba turbo structure forward centrifugal fan, flexible installation, detachable impeller and motor, easy maintenance, the motor can effectively control the temperature rise, automatic thermal protection device

Operating environment temperature range-20°C~50°C. Insulation class E, protection class IP44

Model No.	Airflow (cmh/)	Power (w)	Pressure (Pa)	Noise (dB)	Duct size (mm)	Rated Voltage (v)	Weight (KG)
DPT10-11	120	13.5	55	38	100	220-230	2.1
DPT10-11A	155	14.8	65	40	100	220-230	2.1
DPT10-11B	180	19	75	40	100	220-230	2.1
DPT15-33	300	32	140	42	150	220-230	3
DPT15-34	460	48	150	45	150	220-230	3
DPT20-45	600	80	190	47	200	220-230	4.5
DPT20-54	800	105	200	48	200	220-230	4.5



## YXF Series Circular Duct Fan

Circular duct fans on both sides can be the same specifications of the ventilation pipe, the same axis into the wind, the fan can be concentrated multi-zone series of ventilation for building ventilation or indoor ventilation pipe pressure. Widely used in hotels, department stores, entertainment venues and residential ventilation.

Model(No.)	Power(W)	Voltage(V)	Rotation(R/Min)	Volume(m <sup>3</sup> /h)	Static pressure(Pa)	Usable Area(m <sup>2</sup> )	Noise dB(A)
YXF100	60	220	2500	300	900	10~20	65
YXF125	65	220	2500	400	350	13~26	66
YXF150	70	220	2500	750	400	25~50	72
YXF160	80	220	2500	850	450	28~56	72
YXF200	100	220	2500	950	550	31~63	70
YXF250	120	220	2500	1050	600	35~70	70
YXF315	150	220	2500	1600	700	53~100	63



## HEPA High Efficiency Purifying Box (Split type)

Six high efficiency filtration technology;  
 PM2.5 filtration efficiency of  $\geq 95\%$ ;  
 Initial efficiency filters, toxic gas decomposition of cold catalyst layer,  
 the initial effect of filter, sterilization filter, HEPA efficient filter, activated  
 carbon adsorption layer six-fold high-efficiency filtration technology;

Top new purification

Split air purification box from the beginning of the filter, toxic gas  
 decomposition of cold catalyst layer and in line with HEPA filter layer,  
 Can effectively remove the odor in the air, decomposition of toxic and  
 harmful gases in the air, the filter effect of PM2.5 particles in more than 95%.



Model No.	(L)	(W)	(H)	(Duct Dia)	(Duct H)
JHX100	350	240	150	Φ98	25
JHX150	350	240	150	Φ147	30

## RKF Rectangular Duct Fan

Features

- ◆Suitable for the installation of rectangular pipe inside the ceiling, front-tilt or rear-tilt centrifugal impeller, flame retardant ABS material made of junction box, chassis with high-quality galvanized steel, and the default installation of holes
- ◆Low temperature rise single phase asynchronous external rotor motor, motor with thermal overload protector, NSK ball bearings, 5000 hours continuous operation, clamshell design, easy to maintain
- ◆Operating temperature range-20 C ~50 C , insulation class F, protection class IP44

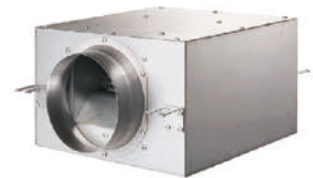
Model Model No.	Airflow (cmh/l)	Power (w)	Static pressure Pa	Noise ( dB )	Duct size (mm)	Rated voltage ( V )	Weight ( KG )
RKF250*125	440	85	310	65	250*125	220-230	6.3
RKF300*150	750	123	195	68	300*150	220-230	9.3
RKF400*200	1040	260	240	61	400*200	220-230	15.1
RKF500*250	1730	634	450	52	500*250	220-230	22.5
RKF500*300	1950	714	500	69	500*300	220-230	27.2
RKB400*200	1280	147	245	66	400*200	220-230	15.1
RKB500*250	2250	260	320	52	500*250	220-230	22.5
RKB500*300	2450	370	385	63	500*300	220-230	27.2
RKB600*300	3050	634	505	67	600*300	220-230	34.4
RKB600*350	3300	714	585	67	600*350	220-230	39.8



## JYF Series Low Noise Fan

Low noise fan is based on the GDF centrifugal fan to improve the process to maintain the original large amount of airflow volume.  
 Low noise characteristics, to further reduce the size, reduce noise, improve energy efficiency and design of new products.

Model(No.)	Voltage(V)	Power(W)	Rotation(r/min)	Volume(m³/h)	Noise dB(A)	Static pressure(Pa)
JYF1.0L-100	220	17 /	1320 /	116 /	18 /	84 /
JYF1.0H-100	220	36 /	2100 /	230 /	21 /	165 /
JYF1.2-150	220	45 /	1320 /	368 /	27 /	136 /
JYF1.5-150	220	90 /	1380 /	528 /	32 /	182 /
JYF1.8-150	220	135 90	1400 1200	780 680	34 31	245 186
JYF2.0-200	220	175 115	1400 1200	950 830	36 32	285 216
JYF2.3-200	220	230 155	1400 1200	1220 1060	41 38	390 298
JYF2.5L-250	220	250 180	1050 940	1720 1540	42 39	340 275
JYF2.5H-250	220	400 260	1420 1230	2150 1865	45 42	490 370



## JYF Series Porous Silent Cabinet Fan

Fans using high-quality ball bearing motor, with multi-wing double-levered forward-curve centrifugal impeller,  
 the product is set to three air inlet. It can be used for ventilating multiple rooms at the same time for a host  
 computer, and it is convenient to take over.

Model(No.)	Power(W)	Voltage(V)	Volume(m³/h)	Static pressure(Pa)	Noise dB(A)	Usable Area(m²)
JYF-1.2-150D	45	220	350	135	27	14~28
JYF-1.5-150D	75	220	550	180	32	22~44



# New fresh air fan

Profile

## DJT Circular Duct Fan

### Features

- ◆ The housing is made of high quality steel
- ◆ Backward-curve centrifugal impeller, flame retardant PA66 material
- ◆ Enclosure made using flame retardant ABS material
- ◆ Low temperature rise single phase asynchronous external rotor motor
- ◆ The motor is equipped with a thermal overload protector
- ◆ NSK ball bearings, 5000 hours of continuous operation
- ◆ Operating environment temperature range -20 °C ~ 50 °C
- ◆ Insulation class F, protection class IP44



Certificate

Series	Model Model No.	Airflow (cmh/l)	Power (w)	Static pressure (Pa)	Noise (dB)	Duct size (mm)	Rated voltage (v)	Weight (KG)
Circular duct fans (Plastic type)	DJT10U-25P	275	69	340	63	100	220-230	2.3
	DJT12U-35P	375	74	325	62	125	220-230	2.4
	DJT15U-45P	575	96	400	65	150	220-230	3.4
	DJT16U-45P	640	127	396	65	160	220-230	3.6
	DJT20U-46P	990	166	575	66	200	220-230	3.8
	DJT25U-66P	1080	174	580	67	250	220-230	3.9
Circular duct fans (Metal type)	DJT10U-25M	260	70	295	64	100	220-230	3.4
	DJT12U-35M	360	75	345	64	125	220-230	3.8
	DJT15U-45M	550	100	395	65	150	220-230	4.2
	DJT16U-45M	620	110	395	66	160	220-230	4.5
	DJT20U-46M	930	158	565	67	200	220-230	4.8
	DJT25U-66M	1030	190	560	68	250	220-230	5.5
	DJT31U-66M	1800	280	700	70	315	220-230	6.8

Facilities

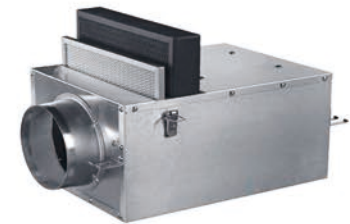
## DPT(G) Filter out PM2.5 Unidirectional Flow Fan

### Features

- ◆ Positive pressure fresh air and efficient purification integration
- ◆ High-quality stainless steel, all-metal, compact structure, optimized fan wheel and duct size, running with ultra-low noise, high static pressure, high volume design
- ◆ Long-life low temperature motor and NSK ball bearings

### Adaptation

High indoor air quality, mechanical active air supply, construction is simple, easy to simplify the economic users



Product

Model Model No.	Airflow (cmh/l)	Rated voltage (v)	Power (w)	Static pressure (Pa)	Noise (dB)	Duct size (mm)	Weight (KG)
DPT(G)10A	130-105-90	220	25-21-17	95-80-70	22-21-19	100	5
DPT(G)15A	250-215-175	220	34-31-28	105-100-90	24-23-21	150	7
DPT(G)10B	330-290-255	220	47-37-29	118-110-100	26-24-23	150	7

## DPT Filter out PM2.5 Reversible Flow Fan

### Features

- ◆ PM2.5 host built-in high-efficiency filter, multi-network Hepa activated carbon efficient stratification filter net
- ◆ Positive pressure fresh air and efficient purification integration
- ◆ High-quality stainless steel, all-metal, compact structure, optimized fan wheel and duct size, running with ultra-low noise, high static pressure, high volume design
- ◆ Long-life low temperature motor and NSK ball bearings

### Adaptation

High indoor air quality, mechanical active air supply, construction is simple, easy to simplify the economic users



Summary

Model Model No.	Airflow (cmh/l)	Rated voltage (v)	Power (w)	Static pressure Pa	Noise (dB)	Duct size (mm)	Remark
DPT10-33X2A	200	220-230	60	108	40	100	with high efficiency PM2.5 purifier but without energy recycle
DPT10-33X2B	300	220-230	65	120	42	100	
DPT15-42X2A	600	220-230	105	150	45	150	no purifier and energy recycle
DPT25-76X2A	1500	220-230	770	320	54	250	

## Cabinet Duct Fan

Forward curved multi-blade centrifugal impeller, big airflow, low noise  
 External rotor motor, direct driving  
 Good choice using in hotel, meeting place, super market, stores, restroom etc,  
 for blowing-in, air exhaust, return air and air supplement  
 Maximum air volume: 1515m³/h  
 Highest static pressure: 360Pa



Projects



## Antifreeze Full heat exchanger

## Feature:

Break the bottleneck in the cold area, environmental conditions, the temperature may be  $-30^{\circ}\text{C}$ , a temperature range of below 85% of normal use, effective to exclude excessive condensation in the temperature generated.

## Intelligent Fuzzy Control Technology

Cold region-specific fuzzy controller, according to the level of outdoor temperature automatically select the appropriate operating mode, without having to manually adjust the function.

Built-in antifreeze device, energy saving, reduce installation and after-sale maintenance costs

Anti-freeze device, built-in design, without the need for cold parts combinations, without adding additional power section, easy to install and easy to use in winter and more energy efficient

Built-in high thermal movement, energy saving, universities, environmental protection



## Specifications

Model	Airflow (m <sup>3</sup> /h)	Static Pressure (Pa)	Power (W)	Current (A)	Noise dB(A)	Cooling efficiency		Heating efficiency		Weight Kg	Dimension (mm)	Duct size ΦD (mm)
						Temp Efficiency	Enthalpy efficiency	Temp Efficiency	Enthalpy efficiency			
FNRV-2Q-D	200	75	65	0.5	30	77	64	78	69	23	890x665x274	Φ144
FNRV-3Q-D	300	75	120	0.6	45	78	65	78	70	25	964x722x270	Φ144
FNRV-4Q-D	400	80	200	1	48	78	65	79	70	28	984x927x270	Φ144
FNRV-5Q-D	500	80	220	1	50	79	66	79	71	39	984x927x270	Φ194
FNRV-8Q-D	800	100	410	1.5	52	79	65	79	70	66	1356x1007x388	Φ242
FNRV-10Q-D	1000	130	510	2	54	78	67	78	71	80	1356x1007x388	Φ242

Ceiling and floor dual use series Full heat exchanger Airflow 5000 m<sup>3</sup>/h

## Feature:

RoHS Certificate

Using longYI Patent Technical movement

Ceiling mounted apparatus may be floor-mounted seat, can be freely selected according to the site.

Remote control box operation, the installation site at random

Air supply, exhaust control alone, the user can adjust the actual needs of choice, in order to facilitate energy conservation

Suitable for hotels, supermarkets, office buildings, conference rooms, classrooms and other office use

Can be used alone, combined with the central air-conditioning system to use better



## Remark:

380V three-phase power supply

The noise value of the product is semi-anechoic chamber measurement, under actual conditions, due to environmental impact, the noise value will be greater than the value of the standard

The product is constantly updated, the updated technical parameters without further notice, please update the official website

## Specifications

Model	Airflow (m <sup>3</sup> /h)	Static Pressure (pa)	Power (W)	Current (A)	Noise dB(A)	Cooling efficiency		Heating efficiency		Weight Kg	Dimension (mm)
						Temp Efficiency	Enthalpy efficiency	Temp Efficiency	Enthalpy efficiency		
LNRV-15-D	1500	160	1000	4.4	58	78	67	78	72	200	1600 × 1265 × 540
LNRV-20-D	2000	170	1200	5.6	60	79	68	79	70	225	1600 × 1470 × 540
LNRV-25-D	2500	180	2000	6.8	62	78	67	78	71	240	1710 × 1480 × 600
LNRV-30-D	3000	200	2100	7.2	64	79	67	80	70	270	1800 × 1650 × 640
LNRV-40-D	4000	220	2400	8.2	66	78	67	79	71	265	1725 × 1450 × 1050
LNRV-50Q-D	5000	240	3000	11.1	68	79	66	80	70	280	1820 × 1780 × 1050
LNRV-60Q-D	6000	320	3600	14.2	66	78	67	79	72	380	1820 × 1660 × 1050
LNRV-70Q-D	7000	310	3800	15.1	67	78	67	79	72	380	2059 × 1780 × 1168
LNRV-80Q-D	8000	320	4000	15.6	68	84	67	84	76	390	2059 × 1780 × 1168
LNRV-90Q-D	9000	340	5000	16.7	70	80	67	80	74	410	2280 × 1900 × 1200
LNRV-100Q-D	10000	350	6000	19.2	78	82	67	82	78	440	2280 × 1900 × 1200

## New fresh air fan

### Full heat exchanger Airflow 1500–3000 m<sup>3</sup>/h

**Feature:**

RoHS Certificate

Using longYI Patent Technical movement

Ceiling mounted apparatus may be floor-mounted seat, can be freely selected according to the site.

Remote control box operation, the installation site at random

Air supply, exhaust control alone, the user can adjust the actual needs of choice, in order to facilitate energy conservation

Suitable for hotels, supermarkets, office buildings, conference rooms, classrooms and other office use  
Can be used alone, combined with the central air-conditioning system to use better



**Remark:**

380V three-phase power supply

The noise value of the product is semi-anechoic chamber measurement, under actual conditions, due to environmental impact, the noise value will be greater than the value of the standard

The product is constantly updated, the updated technical parameters without further notice, please update the official website

### Specifications

Model	Airflow (m <sup>3</sup> /h)	Static Pressure (pa)	Power (W)	Current (A)	Noise dB(A)	Cooling efficiency		Heating efficiency		Weight Kg	Dimension (mm)
						Temp Efficiency	Enthalpy efficiency	Temp Efficiency	Enthalpy efficiency		
LNRV-15-D	1500	160	1000	4.4	58	78	67	78	72	200	1600 × 1265 × 540
LNRV-20-D	2000	170	1200	5.6	60	79	68	79	70	225	1600 × 1470 × 540
LNRV-25-D	2500	180	2000	6.8	62	78	67	78	71	240	1710 × 1480 × 600
LNRV-30-D	3000	200	2100	7.2	64	79	67	80	70	270	1800 × 1650 × 640
LNRV-40-D	4000	220	2400	8.2	66	78	67	79	71	265	1725 × 1450 × 1050
LNRV-50Q-D	5000	240	3000	11.1	68	79	66	80	70	280	1820 × 1780 × 1050
LNRV-60Q-D	6000	320	3600	14.2	66	78	67	79	72	380	1820 × 1660 × 1050
LNRV-70Q-D	7000	310	3800	15.1	67	78	67	79	72	380	2059 × 1780 × 1168
LNRV-80Q-D	8000	320	4000	15.6	68	84	67	84	76	390	2059 × 1780 × 1168
LNRV-90Q-D	9000	340	5000	16.7	70	80	67	80	74	410	2280 × 1900 × 1200
LNRV-100Q-D	10000	350	6000	19.2	78	82	67	82	78	440	2280 × 1900 × 1200

### Full heat exchanger Airflow 4000 m<sup>3</sup>/h

Model	Airflow (m <sup>3</sup> /h)	Static Pressure (pa)	Power (W)	Current (A)	Noise dB(A)	Cooling efficiency		Heating efficiency		Weight Kg	Dimension (mm)
						Temp Efficiency	Enthalpy efficiency	Temp Efficiency	Enthalpy efficiency		
LNRV-15-D	1500	160	1000	3.6	51	62	51	70.5	62	173	1500 × 1200 × 540
LNRV-20-D	2000	170	1200	4.4	53	60	52	70	63	186	1500 × 1200 × 540
LNRV-25-D	2500	180	2000	6.8	55	62	50	70	63	200	1500 × 1200 × 540
LNRV-30-D	3000	200	2100	7.2	57	64	55	72	64	270	1500 × 1200 × 540
LNRV-40-D	4000	220	2400	8.2	64	64	51	71	64	300	1620 × 1330 × 990
LNRV-50Q-D	5000	240	3000	11.1	64	64	55	72	65	325	1620 × 1330 × 990
LNRV-60Q-D	6000	320	3600	14.8	62	62	60	71	65	380	1720 × 1160 × 990
LNRV-70Q-D	7000	310	3800	15.5	61	61	60	71	65	380	1720 × 1160 × 990
LNRV-80Q-D	8000	320	4000	16.6	61	61	60	71	65	390	1720 × 1160 × 990
LNRV-90Q-D	9000	340	5000	18.5	62	62	60	71	65	410	2280 × 1900 × 1200
LNRV-100Q-D	10000	350	6000	22.2	62	62	55	71	65	440	2280 × 1900 × 1200

### PYD PYD Induced fan

This type of fan is widely used in underground parking lots, gymnasium, exhibition center, airport, warehouse, supermarket and etc. Arranged by proper system settings, the fan can help to get a high efficient and economical ventilation effect with the best indoor air distribution.

Model(No.)	Power(W)	Voltage(V)	Rotation(R/Min)	Volume(m <sup>3</sup> /h)	Export wind(m/s)
PYD120	120	220	800	650	12
PYD180	180	220	1250	860	15



## APB/ASB Series Semi-metal Exhaust Fan with Shutter

Bracket&Shutter:press forming by good gquality steel;strong corrosion resistance.Panel:made of antistatic and anti-aging ABS plastic.  
 Motor:good quality ball bearing,low noise,large air volume,long service life,super quiet.  
 Application: suitable for Ventilation in sitting room,office,shopping mall,building and etc.

Series	Model(No.)	Size(inch)	Power(W)	Voltage(V)	Volume(m³/h)	Noise dB(A)	Usable Area(m²)
Standard Type (Ball Bearing)	APB15-J1	6	24	220	300	39	12~24
	APB20-J1	8	28	220	550	41	22~24
	APB25-J1	10	36	220	900	42	36~72
	APB30-J1	12	48	220	1200	46	48~96
	ASB15-J1	6	24	220	300	39	12~24
	ASB20-J1	8	28	220	550	41	22~24
	ASB25-J1	10	36	220	900	42	36~72
	ASB30-J1	12	48	220	1200	46	48~96
	APB15-J2	6	24/21	220	300/200	39/35	12~24
	APB20-J2	8	28/31	220	550/400	41/38	22~24
APB25-J2	10	36/31	220	900/650	42/39	36~72	
APB30-J2	12	48/32	220	1200/900	46/41	48~96	
Luxury Type (Ball Bearing)	APB15-JH1	6	24	220	300	39	12~24
	APB20-JH1	8	28	220	550	41	22~44
	APB25-JH1	10	36	220	900	42	36~72
	APB30-JH1	12	48	220	1200	46	48~96
	ASB15-JH1	6	24	220	300	39	12~24
	ASB20-JH1	8	28	220	550	41	22~44
	ASB25-JH1	10	36	220	900	42	36~72
	ASB30-JH1	12	48	220	1200	46	48~96
	APB15-JH2	6	24/21	220	300/200	39/35	12~24
	APB20-JH2	8	28/31	220	550/400	41/38	22~24
APB25-JH2	10	36/31	220	900/650	42/39	36~72	
APB30-JH2	12	48/32	220	1200/900	46/41	48~96	



## BPT Ceiling Mounted Ventilation Fa

Optimal air duct design, Motor with high-efficiency & long-life ball bearing,  
 Optimized efficiency; suitable for continuous ventilation;  
 Application: Ventilation for hotels, shopping malls, places of entertainment  
 and buildings.



半金属系列  
Semimetal Series



全塑系列  
Plastic Series

Series	Model(No.)	Power(W)	Voltage(V)	Volume(m³/h)	Static pressure(Pa)	Usable Area(m²)	Noise dB(A)
Semimetal Series	BPT10-23-JZ21J	20	220	150	100	6~12	33
	BPT10-23-JZ24J	22	220	200	110	8~16	35
	BPT10-33-JZ24J	25	220	250	120	10~20	39
	BPT15-33-JZ27J	35	220	300	120	12~24	33
	BPT15-43-JZ27J	39	220	380	150	15~30	37
	BPT15-43-JZ32J	40/35	220	550/450	150/120	18~44	42/37
Plastic Series	BPT10-23-JZ21S	20	220	150	100	6~12	33
	BPT10-23-JZ24S	22	220	200	110	8~16	35
	BPT10-33-JZ24S	25	220	250	120	10~20	39
	BPT10-33-JZ27S	35	220	300	120	12~24	33
	BPT10-43-JZ27S	39	220	380	150	15~30	37
	BPT10-43-JZ32S	40/35	220	550/450	150/120	18~44	42/37

# Plastic exhaust fan

Profile

## APB/ASB Plastic Exhaust Fan with Shutter

Material:made of antistatic and anti-aging ABS plastic.Motor:good quality ball bearing,low noise,large air volume,long service life,super quiet.  
Application: suitable for Ventilation in sitting room,office,shopping mall,building and etc.

Certificate

Series	Model(No.)	Size(inch)	Power(W)	Voltage(V)	Volume(m <sup>3</sup> /h)	Noise dB(A)	Usable Area(m <sup>2</sup> )
Standard Type (Ball Bearing)	APB20-S1	8	28	220	550	41	22~44
	APB25-S1	10	36	220	900	42	36~72
	APB30-S1	12	48	220	1200	46	48~96
	ASB20-S1	8	28	220	550	41	22~44
	ASB25-S1	10	36	220	900	42	36~72
	ASB30-S1	12	48	220	1200	46	48~96
	APB20-S2	8	28/23	220	550/400	41/38	22~44
	APB25-S2	10	36/31	220	900/650	42/39	36~72
	APB30-S2	12	48/42	220	1200/900	46/41	48~96
Luxury Type (Ball Bearing)	APB15-SH1	6	24	220	300	39	12~24
	APB20-SH1	8	28	220	550	41	22~44
	APB25-SH1	10	36	220	900	42	36~72
	APB30-SH1	12	48	220	1200	46	48~96
	ASB20-SH1	8	28	220	550	41	22~44
	ASB25-SH1	10	36	220	900	42	36~72
	ASB30-SH1	12	48	220	1200	46	48~96



豪华型 (滚珠轴承)  
Luxury Type(Ball Bearing)



Facilities

## APC Window Type Exhaust Fan

Material:made of antistatic and anti-aging ABS plastic.Structure:compact,safe,stable and firm.Application: suitable for Ventilation in sitting room, office,shopping mall,building and etc.

Model(No.)	Size(inch)	Power(W)	Voltage(V)	Volume(m <sup>3</sup> /h)	Noise dB(A)	Usable Area(m <sup>2</sup> )
APC10-F1	4(方形风压)	12	220	100	40	4~8
APC15-F1	6(方形风压)	17	220	200	42	8~16
APC20-F1	8(方形风压)	25	220	300	45	12~24
APC10-C1	4(方形超薄)	15	220	100	40	4~8
APC15-C1	6(方形超薄)	20	220	200	42	8~16
APC15-Y1	6(圆形)	12	220	200	40	8~16
APC20-Y1	8(圆形)	18	220	300	42	12~24



方形风压  
Square Type

Product

Summary

## APT Plastic Ceiling Mounted Ventilation fan

Material:made of antistatic and anti-aging ABS plastic.Motor:good quality ball bearing,low noise,large air volume,long service life,super quiet.  
Application: suitable for Ventilation in sitting room,office,shopping mall,building and etc.

Model(No.)	Size(inch)	Power(W)	Voltage(V)	Volume(m <sup>3</sup> /h)	Noise dB(A)	Usable Area(m <sup>2</sup> )
APT15-S	6	24	220	300	40	12~24
APT20-S	8	28	220	550	41	22~44
APT25-S	10	36	220	900	43	36~72
APT30-S	12	48	220	1200	46	48~96



Projects

## WF-28G Mist cooling fan

- ◆ Blade: 700mm spray fan Professional fan, unique design. Made of high quality cast aluminum alloy, through the inclination and curvature of the blades, it is designed reasonably to form a smooth flow path. So that the fan noise is low, big air volume, long air distance;
- ◆ Wall-mounted fan tank: The use of high-quality ABS plastic injection molding, a unique configuration, wall-mounted spray fan dedicated tank, beautiful design, compact.
- ◆ Application: hotels, restaurants, villas, clubs, flower shops, farms, industrial enterprises, textile industry, sports and fitness venues, amusement parks, outdoor venues and so on.



Mist fan

Model	Grade	Power consumption (W)	Speed (RPM)	Air circulation (m³/h)	Noise (dB)	Fan motor	Max atomizing (L/H)	Water tank volume (L)	Power of pump (W)	Size (cm)
WF-28S	1	220	1400	320	69	离心	3-7	20	26	64x53x48 74.5x11x74.5 135x16x14 29x19x33
	2	190	1300	270	65					
	3	180	1200	230	60					
WF-28G	1	220	1400	320	69	离心	3-7	5	26	54.5x36.5x20.5 74.5x11x74.5 29x19x33
	2	190	1300	270	65					
	3	180	1200	230	60					

## WF-28S Mist cooling fan

### Features of Mist Cooling Fan

- ◆ It's a kind of centrifugal fan cooling by mist, without swing nozzle and no need to install water filter device.
- ◆ Powerful airflow makes suitable atomization with low noise.
- ◆ Spray mist and operate independently, easy to maintenance.
- ◆ The motor adopts low temperature design, operation stably. The water circulation pump is qualified.
- ◆ 90 degree swing, 3 speed adjustment, atomization-adjusted at random

### Cooling principle of Mist Cooling Fan

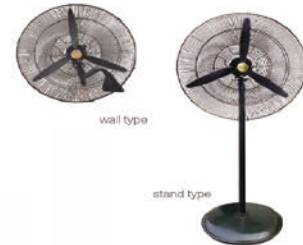
The mist cooling fan generates sprays when it works. The water mist particles carry the air heat off, which makes the air temperature lower.



## JF Series industrial fan

Featured by steady operation, large air volume and low noise, nice outlook and optimized blade structure, it is widely used for ventilation and sunstroke prevention in mineral workshop, warehouse and etc.

Model	Power(W)	Voltage(V)	Rotation(r/min)	Volume(m³/h)	Remarks
450mm	0.1	220/380	1350	7800	stand type/ wall type
500mm	0.12	220/380	1390	9000	
650mm	0.2	220/380	1400	12000	
750mm	0.25	220/380	1400	18000	



## DF Series Stand Powerful Fan(Luxury Type) ( 20 "、 24 "、 26 "、 30 " )

Optimized impeller structure, Large air volume and low noise, Motor with a long service life  
Three speeds, oscillating angle adjustable, two or three blades, loose and solid guard  
Suitable for heat-stroke prevention and cooling —downw mineral factories, workshop and warehouse etc, for ventilation and improving environment  
20 "、 24 "、 26 "、 30 " four different sizes  
Air volume: 7800-18000m³/h



- Centrifugal atomization design, without nozzle, no need for water-filtration equipment
  - Adjustable misting volume, low noise
  - Atomization and Air deliver driven by separate motor, convenient to use and easy to maintain
  - Fan surface with powder coating, good rust prevention and long service life
  - Motor with low-temperature- rise design, steady performance long- life: operation and good overload protect
  - Protective device for pump running When water is over
  - 90° oscillation. three speeds
- Waterproof electr design, safe to use  
Utilized CAD optimized design, good and graceful-looking  
Special usage: such as livestock farm, greenhouse, mushroom breeding field, etc



Profile

Certificate

Facilities

Product

Summary

Projects

# Negative pressure fan

## JS type exhaust fan

JS exhaust fan is featured by low noise, electricity saving, large air flow, easy installation, which is an ideal choice for sunstroke prevention and ventilation in occasions such as various warehouses, offices, flower greenhouses & poultry houses. The product is used to transport non-flammable, low-corrosive gases with the temperature no higher than 50 °C, relative humidity no greater than 80% and the quantity of dust and solid impurities ≤ 150mg/m³.

Series	Model(No.)	Power(W)	Voltage(V)	Rotation(R/Min)	Volume(m³/h)	Noise dB(A)	Remarks
JS- II exhaust fan(motor directly driven type)	JS- II -4A	0.37	220/380	1400	7200	≤73	with louver/with front-and-back protective net
	JS- II -5A	0.55	220/380	1400	8600	≤75	
	JS- II -6A	0.25	220/380	720	17000	≤70	
	JS- II -8A	0.4	220/380	520	23000	≤71	
	JS- II -9A	0.55	220/380	520	27500	≤73	
	JS- II -10A	0.55	220/380	460	32000	≤74	
	JS- II -12A	0.75	220/380	460	37000	≤75	
JS- II -13A	1.1	220/380	460	44500	≤78		



JS- II型 (A式)  
Motor directly driven type



JS- II型 (带百叶窗)  
(With louver)



JS- II型 (前后带网)  
(With front-and-back protective net)

Series	Model(No.)	Power(W)	Voltage(V)	Rotation(R/Min)	Volume(m³/h)	Noise dB(A)	Remarks
JS- II exhaust fan(belt driven type)	JS- II -8C	0.55	220/380	520	23000	≤71	with louver/with front-and-back protective net
	JS- II -9C	0.75	220/380	520	27500	≤73	
	JS- II -10C	0.75	220/380	460	32000	≤74	
	JS- II -12C	1.1	220/380	460	37000	≤75	
	JS- II -13C	1.1	220/380	460	44500	≤78	

1380mm



CY-1380

1220mm



CY-1220

1060mm



CY-1060

900mm



CY-900

Product parameters	1380型	1220型	1060型	900型
Air flow	40000m³/h	37000m³/h	32000m³/h	29500m³/h
power	1.1KW	0.75KW	0.55KW	0.37KW
Voltage	380V/220V	380V/220V	380V/220V	380V/220V
Weight	74kg	54kg	42kg	36kg
Noise	52db	51db	51db	51db
Blade Material	Aluminum alloy / steel	Aluminum alloy / steel	Aluminum alloy / steel	Aluminum alloy / steel
Frame material	Galvanized sheet	Galvanized sheet	Galvanized sheet	Galvanized sheet

product structure

- 1、Casing: Frames and shutters are made of galvanized sheet
- 2、Blade: Blade one-time stamping, forging screws fastening, the computer precision balance calibration
- 3、Shutter: Shutter connectors made of high-strength plastic material closed tightly, long service life, when the fan is not in use mainly for dust and rain proof.
- 4、Motor: With 4 high-quality copper wire motor, two kinds of 380V and 220V.
- 5、Belt: Using common rubber belt.
- 6、Shroud: the air flow to the fan exhaust outlet, concentrated outside the room
- 7、Safety net: safety net, to prevent the manpower, and other foreign objects into the fan.
- 8、Pulley: the motor speed through the size of the pulley into low-speed, reduce fan noise and motor load operation.

Dehumidifier

CF6.8DT CF6.8KT

- ◆ Microcomputer automatic control
- ◆ Large LCD temperature and humidity display, real-time monitoring of operating conditions
- ◆ Unique humidity 1% adjustable function, humidity setting range 10% ~ 98% RH
- ◆ 1 ~ 24 hours regular shutdown function, efficient automatic frost system, suitable for low temperature condition
- ◆ Improve the system fault automatic diagnosis function, can quickly diagnose the unit running fault
- ◆ Continuous drainage hose can be achieved at the bottom with universal wheel, can move freely
- ◆ High-quality centrifugal fan, strong wind, uniform air flow, low noise
- ◆ Using international brand compressor, stable performance, long lasting dehumidification



Dehumidifier

CF15KT/CF20KT/CF25KT

- ◆ Microcomputer automatic control
- ◆ Large LCD temperature and humidity display, real-time monitoring of operating conditions
- ◆ Unique humidity 1% adjustable function, humidity setting range 10% ~ 98% RH
- ◆ 1 ~ 24 hours regular shutdown function, efficient automatic frost system, suitable for low temperature condition
- ◆ Improve the system fault automatic diagnosis function, can quickly diagnose the unit running fault
- ◆ Continuous drainage hose can be achieved at the bottom with universal wheel, can move freely
- ◆ High-quality centrifugal fan, strong wind, uniform air flow, low noise
- ◆ Using international brand compressor, stable performance, long lasting dehumidification



XK-30 External rotor type centrifugal evaporative air cooler

- 1、 Small investment, great efficiency.
- 2、 Small power consumption, only 3 degrees per hour electricity.
- 3、 No compressor, no oxygen Leon, no pollution.
- 4、 Less trouble, easy maintenance.

Model	XK-30S/up	XK-30S/down
Air flow	30000m <sup>3</sup> /h	30000m <sup>3</sup> /h
Voltage/Frequency	380V / 220V / 50HZ	380V / 220V / 50HZ
Power	3KW	3KW
Dimension	1300 * 1300 * 1180mm	1300 * 1300 * 1180mm
wind pressure	300Pa	300Pa
Weight	128KG	128KG
Applicable area	200 — 250m <sup>2</sup>	200 — 250m <sup>2</sup>
Air deliver	40 — 50M 管道 (Pipeline)	40 — 50M 管道 (Pipeline)
Air outlet	860 * 860MM	860 * 860MM
(db) lowest noise	85	85



# Environmental air conditioning

Profile

## LC-15 Centrifugal evaporative air cooler for business & kitchen use

- ◆ The shell is shaped by plastic injection, high strength, corrosion resistance, anti-aging, anti UV, beautiful and durable, stable performance.
- ◆ The centrifugal air cooler is made from plastic die casting.
- ◆ The belt is made by injection molding.
- ◆ This air cooler has high wind pressure, suitable for long distance air supply. Wind distance is up to 30 meters;
- ◆ This air cooler is specially designed for kitchen use, suitable for kitchens in hotel, restaurant & dining room.



Certificate

Model	Max airflow rate (m³/h)	Max air pressure (Pa)	Airflow style	Voltage frequency (V/Hz)	Motor Power (KW)	Working Current (A)	Wind distance (M)	Water tank Capacity (L)	Physical dimension (LWH)(mm)	Dimension of air outlet (mm)	Noise (dB)	Net weight (KG)	Effective area (KG)	Airflow adjustment	Control
LC-15 Side outlet	15000	250	Centrifugal type	380/50	1.5	3.7	30	25	1100x1100x1000	490x270	≤75	82	100-150	1档	Full electronic control
Note: For speed control, can be equipped with frequency converter															

Facilities

## LC-28 External rotor type centrifugal evaporative air cooler

- ◆ The installation of wind wheel adopts external rotor motor. This makes the inner of the machine closer.
- ◆ Small volume, powerful airflow, high pressure, unique design.
- ◆ Stainless steel cover.
- ◆ Effective wind distance is up to 45 meters.



Model	Max airflow rate (m³/h)	Max air pressure (Pa)	Airflow style	Voltage frequency (V/Hz)	Motor Power (KW)	Working Current (A)	Wind distance (M)	Water tank Capacity (L)	Physical dimension (LWH)(mm)	Dimension of air outlet (mm)	Noise (dB)	Net weight (KG)	Effective area (KG)	Airflow adjustment	Control
C-28 Side outlet	28000	500	Centrifugal type	380/50	3	6.8	45	85	1470x1500x1350	600x480	---	206	150-200	One speed	control box
C-28 Above outlet	28000	500	Centrifugal type	380/50	3	6.8	45	85	1470x1500x1350	600x480	---	230	150-200	One speed	

Product

## Large scale movable evaporative air cooler

- ◆ innovative converter technique, 8-speed airflow adjustment, Sensitive reaction, stable airflow;
- ◆ Flexible use, easy to move, apply for any plane; Electric air-outlet swings air in different angle
- ◆ Full-electronic control, LED lighting display, with functions of over load and leakage protection;
- ◆ Safe enough, it has functions of over voltage protection, overcurrent protection to transport and phase-lack protection;
- ◆ Detachable steel pipe support frame, flexible to install, convenient to transport and also it can support a high weight.
- ◆ PP plastic cover, high strength, preventing corrosion and UV protection.
- ◆ This model is suitable for places: injection molding factory, garment factory, shoe factory, printing factory, rubber factory, leather factory, metal stamping plant, glass factory, electroplating plants, electronics factory, food processing factory and large outdoor exhibition, forum etc.



Summary

Projects

Model	Max airflow rate (m³/h)	Max air pressure (Pa)	Airflow style	Voltage frequency (V/Hz)	Motor Power (KW)	Working Current (A)	Wind distance (M)	Water tank Capacity (L)	Physical dimension (LWH)(mm)	Dimension of air outlet (mm)	Noise (dB)	Net weight (KG)	Effective area (KG)	Airflow adjustment	Control
ZC-18Y	18000	180	Axial type	380/50	1.1	2.8	25	120	1100x1150x1000	670x670	≤73	94.5	80-100	One speed	LCD control (single speed) (inverter)
ZC/BP-18Y	18000	180	Axial type	220/50	1.1	4.8	25	120	1100x1150x1000	670x670	≤73	94.5	80-100	Eight speed	



### LX-23, LC-23 External rotor type centrifugal evaporative air cooler

- ◆ The installation of wind wheel adopts external rotor motor. This makes the inner of the machine closer.
- ◆ Small volume, powerful airflow, heavy wind pressure, unique design
- ◆ The shell is shaped by plastic injection.
- ◆ Effective wind distance is up to 40 meters.



Model	Max airflow rate (m³/h)	Max air pressure (Pa)	Airflow style	Voltage frequency (V/Hz)	Moter Power (KW)	Working Current (A)	Wind distance (M)	Water tank Capacity (L)	Physical dimension (LWH)(mm)	Dimension of air outlet (mm)	Noise (dB)	Net weight (KG)	Effective area (KG)	Airflow adjustment	Control
LX-23 Below outlet	23000	450	centrifugal	380/50	2.2	5.7	40	60	1330x1330x1190	550x430	≤ 83	190	120-180	One speed	control box
LC-23 Side outlet	23000	450	centrifugal	380/50	2.2	5.7	40	60	1330x1330x1190	540x430	≤ 83	198	120-180	One speed	
LS-23 Above outlet	23000	450	centrifugal	380/50	2.2	5.7	40	60	1330x1330x1190	540x430	≤ 83	198	120-180	One speed	

### ZC-23, ZC/BP-23 Luxury evaporative air cooler (Airflow 23,000m³/h)

- ◆ Full-automatic electronic display controller, easy operation.
- ◆ This model adopts high pressure mute fan having powerful airflow. It has less energy consumption, low noise and wide adaptability.
- ◆ Auto-controlled water supply system, open-type water distributor, supplying water evenly and smoothly.
- ◆ Weathering injection shapes the shell having high strength, corrosion protection, anti-aging and anti-UV Attractive, durable and stable performance.
- ◆ Adopts high-performance evaporator (Cellulose cooling pad) processed by high technology, amazing evaporation, wonderful cooling effect, on any smell.
- ◆ Using high quality cast iron moter which has strong power.



Reminder: Due to different installation environment reasons, choose a different direction of outlet, if the installation environment allows, recommend to use the outlet below type.

Model	Max airflow rate (m³/h)	Max air pressure (Pa)	Airflow style	Voltage frequency (V/Hz)	Moter Power (KW)	Working Current (A)	Wind distance (M)	Water tank Capacity (L)	Physical dimension (LWH)(mm)	Dimension of air outlet (mm)	Noise (dB)	Net weight (KG)	Effective area (KG)	Airflow adjustment	Control
ZX-23 Below outlet	23000	210	Axial type	380/50	1.5	3.7	30	25	1100x110x1000	670x670	≤ 73	59.5	100-180	One speed	LCD control (single speed)
ZC-23 Side outlet	23000	210	Axial type	380/50	1.5	3.7	30	25	1100x110x1000	700x687	≤ 76	61.5	100-180	One speed	
ZXS-23 Above outlet	23000	210	Axial type	380/50	1.5	3.7	30	25	1100x110x1030	677x677	≤ 73	63	100-180	One speed	
ZC/BP-23 Below outlet	23000	210	Axial type	220/50	1.5	6.4	30	25	1100x110x1000	670x670	≤ 73	59.5	100-180	Eight speed	LCD control (inverter)
ZS/BP-23 Side outlet	23000	210	Axial type	220/50	1.5	6.4	30	25	1100x110x1000	700x687	≤ 76	61.5	100-180	Eight speed	
ZC/BP-23 Above outlet	23000	210	Axial type	220/50	1.5	6.4	30	25	1100x110x1030	677x677	≤ 73	63	100-180	Eight speed	

### ZC-62Y Business/Home evaporative air cooler

- ◆ Control buttons include: Speed-adjustment buttons (High, Medium, Low), Timing button, Swing button, Anion button and Cooling button.
- ◆ With nice design, Practical, Powerful airflow, Quicken circulation of room cooling air
- ◆ Energy-saving, Environmental protection, Low noise, Less power consumption (0.124kw / h).
- ◆ 4-side air intake, totally 5 pieces of quality cellulose cooling pads. To use cooling pads to the utmost so that it has better cooling effect than other coolers which have the same space.
- ◆ The fall of the cooling pads is up to 1100mm. 1.5 times higher than the normal air coolers. The water can be cooling sufficiently so as to get stronger cooling effect
- ◆ The wing bars can be adjusted to close when not in use to prevent mosquitoes and dust.
- ◆ Suitable for places: office, meeting room, living room, lobby, hospital, waiting room, restaurant, outdoor barcounter etc.



Model	Max airflow rate (m³/h)	Max air pressure (Pa)	Airflow style	Voltage frequency (V/Hz)	Moter Power (KW)	Working Current (A)	Wind distance (M)	Water tank Capacity (L)	Physical dimension (LWH)(mm)	Dimension of air outlet (mm)	Noise (dB)	Net weight (KG)	Effective area (KG)	Airflow adjustment	Control
ZC-62Y	5000	36	Axial type	220/50	0.124	0.9	6	75	560x410x1660	500x500	≤ 53	37	10-30	3档	Full electronic control

## Environmental air conditioning

### ZC-72K、ZC-60K Movable evaporative air cooler(3 sides diffus)

- ◆ Reasonable design with aesthetic appearance
- ◆ Special motor suitable for long term use,not easy damage
- ◆ Adopts 3-side air intake,low noise,strong airflow,nice cooling effect
- ◆ Full-electronic control with remote,multi-functions,convenient to use
- ◆ Suitable for places such as homes,stores,dormitories and internet bars etc.



Model	Max airflow rate (m³/h)	Max air pressure (Pa)	Airflow style	Voltage frequency (V/Hz)	Motor Power (KW)	Working Current (A)	Wind distance (M)	Water tank Capacity (L)	Physical dimension (LWH)(mm)	Dimension of air outlet (mm)	Noise (dB)	Net weight (KG)	Effective area (KG)	Airflow adjustment	Control
ZC-72K Plastic water tank	6800	40	Axial type	220/50	0.23	1.7	8	38	860x500x980	555x570	≤56	40	30-60	Three speeds	Full electronic control
ZC-60K Plastic water tank	6800	40	Axial type	220/50	0.26	1.7	8	38	860x500x980	545x570	≤56	38	30-60	Three speeds	

### ZC-72Y3 Movable evaporative air cooler(3 side air inlet)

- ◆ Unique design with 3-side air intake to increase the cooling effective area,high quality cellulose cooling pad,4-12℃ can be reduced effectively
- ◆ Axial fan blade design,powerful airflow,low noise and long wind distance
- ◆ Three(3) speed adjustment,full-electronic control,LED lighting display,left-right swing and blast automatically but up and down by manual operation
- ◆ The power consumption is 230w only,energy-saving.It has functions of over load and leakage protection. Low malfunction,convenient maintenance,safe to use
- ◆ PP plastic chassis,high strenght,preventing corroison,impact resistance.
- ◆ Big plastic water tank design: the volume of water tank is 120 Liters which ensure the machine to last working 8 to 13 hours and no need to refill water.
- ◆ With the function of electronic remote control
- ◆ It is suitable for use in places: office hospital,hotel,internet bar,bus station,waiting hall,villa,indoor and outdoor banquet,exhibition,factory and other public place.



Model	Max airflow rate (m³/h)	Max air pressure (Pa)	Airflow style	Voltage frequency (V/Hz)	Motor Power (KW)	Working Current (A)	Wind distance (M)	Water tank Capacity (L)	Physical dimension (LWH)(mm)	Dimension of air outlet (mm)	Noise (dB)	Net weight (KG)	Effective area (KG)	Airflow adjustment	Control
ZC-72Y Plastic water tank	6800	40	Axial type	220/50	0.23	1.3	8	38	860x500x1080	605x635	≤56	33	30-60	Three speeds	Full electronic control
ZC-72Y3 Big plastic water tank	6800	40	Axial type	220/50	0.23	1.3	8	120	860x500x1380	605x635	≤56	37	30-60	Three speeds	
ZC-76Y Plastic water tank	6800	40	Axial type	220/50	0.23	1.3	8	38	860x500x1080	605x635	≤56	33	30-60	Three speeds	
ZC-76Y3 Big plastic water tank	6800	40	Axial type	220/50	0.23	1.3	8	120	860x500x1380	605x635	≤56	37	30-60	Three speeds	

### ZX/A-23 Standard evaporative air cooler(Airflow 23,000m³/h)

- ◆ Economic and practical,easy installation,convenient maintenance
- ◆ Mechanical control,durable,having a phase-lack protection(protect the motor), leakage protection(safety)
- ◆ This model adopts high pressure mute fan blade having powerful airflow,it has less energy consumption, low noise and wide adaptability.
- ◆ Uses high quality cellulose cooling pad and good cooling effect
- ◆ Adopts high quality cast iron motor which has strong power.



Reminder: Due to different installation environment reasons, choose a different direction of outlet, if the installation environment allows, recommend to use the outlet below type.

Model	Max airflow rate (m³/h)	Max air pressure (Pa)	Airflow style	Voltage frequency (V/Hz)	Motor Power (KW)	Working Current (A)	Wind distance (M)	Water tank Capacity (L)	Physical dimension (LWH)(mm)	Dimension of air outlet (mm)	Noise (dB)	Net weight (KG)	Effective area (KG)	Airflow adjustment	Control
ZX/A-23 Below outlet	23000	210	Axial type	380/50	1.5	3.7	30	25	1100x110x1000	670x670	≤73	59.5	100-180	one speed	Switch control
ZC/A-23 Side outlet	23000	210	Axial type	380/50	1.5	3.7	30	25	1100x110x1000	700x690	≤76	61.5	100-180	one speed	
ZS/A-23 Above outlet	23000	210	Axial type	380/50	1.5	3.7	30	25	1100x110x1030	675x675	≤73	63	100-180	one speed	

ZS-18Y2, ZS-18Y2-1, ZS/BP-182, ZS/BP-182-1 Large mobile evaporative cooler

- ◆ Innovative frequency conversion technology, 8-speed air volume adjustment, responsive, stable air volume;
- ◆ Smart use, easy to move, suitable for any plane; electric swing, Multi-angle air supply;
- ◆ Safe and reliable, with overvoltage protection, over-current protection, phase protection;
- ◆ Injection shell, high strength, anti-corrosion, anti-UV;
- ◆ ZS-18Y2, ZS / BP-18Y2 models need to connect the water pipe to ensure long-term water supply
- ◆ ZS-18Y2-1, ZS / BP-18Y2-1 models are equipped with water tank but need to add water regularly;
- ◆ It is suitable for injection molding factory, garment factory, shoe factory, printing factory, rubber factory, tanneries, metal stamping shop, glass factory, electronics factory, food processing factory, as well as large outdoor exhibitions and symposiums.
- ◆ Control keys comprising: a gear speed (high, medium, low), timer switch, right and the left air, negative supply, refrigeration cooling.
- ◆ Beautiful appearance and practical design, large air volume, can accelerate the circulation of indoor air-conditioning.
- ◆ Energy saving, low noise, low energy consumption (0.124kw / h).
- ◆ Four sides inlet design, a total of five high-quality paper curtain cooling, optimized paper curtains usage without affecting the appearance and function, better than the same floor area model cooling effect.
- ◆ Paper curtain maximum drop of 1100mm or more, is generally 1.5 times the mobile evaporative cooler, the cycle can be more fully cooled, the cooling effect is more obvious.
- ◆ When not in use, the upper and lower wind can be transferred to the closed state, to prevent mosquitoes, dust into the machine, keep the machine health.
- ◆ Suitable for office, conference room, family living room, hotel lobby, waiting room, restaurant, outdoor bar, etc.
- ◆ Unique product design, three sides inlet, increase the cooling area, high-quality evaporative paper curtain, efficient cooling up to 4-12 °C ;
- ◆ Professional and reasonable design concept. The use of all-round four into the wind, a comprehensive increase in paper curtain volume, the temperature dropped rapidly 4-12 degrees Celsius, to achieve the desired effect.
- ◆ Professional centrifugal fan manufacturing, wind wheel using ABS material, paper curtain using high quality 5090 type paper;
- ◆ With long Air supply distance, fans with three gear: points "high", "in", "low" file. The most upscale wind speed of 14 meters per second;
- ◆ Full electronic control, LED lighting display, swing around the electric blower; blowing up and down manually;
- ◆ It is suitable for: parks, railway stations, hotel lobbies, factories, canteens, outdoor activities and other large public places.
- ◆ Axial flow impeller design, the amount of airflow, low noise, long air supply distance
- ◆ Motor power 230W, less power consumption, with overload, leakage protection, fewer faults, easy maintenance, safe use;
- ◆ Injection molding chassis, high strength, rust, impact resistance;
- ◆ Large tank design, water tank volume of 120 liters of water, each box of water available 8-13 hours;
- ◆ Electronic remote control function;
- ◆ Suitable for public places such as office, hospital lobby, hotel, internet cafe, bus station, waiting hall, villa, indoor and outdoor banquet, large exhibition and factory;
- ◆ Innovative frequency conversion technology, 8-speed air volume adjustment, responsive, stable air volume;
- ◆ Smart, easy to move, suitable for any plane; Electric swing, Multi-angle air supply;
- ◆ Full electronic control, LED light display, with overload leakage protection;
- ◆ Safe and reliable, with overvoltage protection, over-current protection, phase protection;
- ◆ Detachable removable steel tube bracket, easy to transport, high carrying capacity;
- ◆ Injection shell, high strength, anti-corrosion, anti-UV;
- ◆ It is suitable for injection molding factory, garment factory, shoe factory, printing factory, rubber factory, tanneries, metal stamping shop, glass factory, electronics factory, food processing factory, as well as large outdoor exhibitions and symposiums.



Model	Max airflow rate (m³/h)	Max air pressure (Pa)	Airflow style	Voltage frequency (V/Hz)	Motor Power (KW)	Working Current (A)	Wind distance (M)	Water tank Capacity (L)	Physical dimension (LWH)(mm)	Dimension of air outlet (mm)	Noise (dB)	Net weight (KG)	Effective area (KG)	Airflow adjustment	Control
ZS-18Y2	18000	180	Axial type	380/50	1.1	2.8	25	connect water pipe	1100x110x1030	670x670	≤73	93	100-150	one speed	LCD control (single speed) (inverter)
ZS/BP-18Y2	18000	180	Axial type	220/50	1.1	4.8	25	connect water pipe	1100x110x1030	670x670	≤73	93	100-150	Eight speeds	
ZS-18Y2-1	18000	180	Axial type	380/50	1.1	2.8	25	120	1100x110x1030	670x670	≤73	114	100-150	one speed	
ZS/BP-18Y2-1	18000	180	Axial type	220/50	1.1	4.8	25	120	1100x110x1030	670x670	≤73	114	100-150	Eight speeds	

# Environmental air conditioning

## Central control environmental energy-saving acial evaporative air cooler system

- ◆ High operating stability, compact extension organization;
- ◆ Small investment, the total cost of only 30% of the traditional compressor air-conditioning;
- ◆ Energy Conservation: The electricity running cost is only 10-15% of the traditional air-conditioning system;
- ◆ Extraordinarily strong performance: strong air flow, strong airflow and strong ability of ventilation and cooling completely eliminate odor, dust and high temperature, greatly improving working environment and reducing occupational diseases;
- ◆ Freon-free emissions, the air quality of primary forests can be reached during operation;
- ◆ Sturdy, practical, all extensions are centrally controlled by the mainframe;
- ◆ Eliminate peculiar smell: Extensions do not store circulating water, get enough dry when disused, and the whole system runs automatically.



Reminder: Due to different installation environment reasons, choose a different direction of outlet, if the installation environment allows, recommend to use the outlet below type.

Model	Max airflow rate (m³/h)	Max air pressure (Pa)	Airflow style	Voltage frequency (V/Hz)	Moter Power (KW)	Working Current (A)	Wind distance (M)	Water tank Capacity (L)	Physical dimension (LWH)(mm)	Dimension of air outlet (mm)	Noise (dB)	Net weight (KG)	Effective area (KG)	Airflow adjustment	Control
ZX-18-Z Outlet below	18000	180	Axial flow	380/50	1.1	2.8	25	25	1100x1100x1000	670x670	≤71	58	100-150	One Speed	Central control
ZC-18-Z Outlet on the side	18000	180	Axial flow	380/50	1.1	2.8	25	25	1100x1100x1000	700x687	≤73	60	100-150	One Speed	
ZS-18-Z Outlet above	18000	180	Axial flow	380/50	1.1	2.8	25	25	1100x1100x1000	677x677	≤71	62	100-150	One Speed	

## ZX/A-18 Standard evaporative air cooler(Airflow 18,000m³/h)

- ◆ Economical, easy to install, easy to maintain;
- ◆ Large air volume, low noise, effective air supply distance of 10-30 meters;
- ◆ Using high-quality cooling paper curtain, cooling effect is perfect;
- ◆ High-quality cast iron motor, strong performance;
- ◆ High-pressure silent fan, air supply, low energy consumption, low noise, wide applicability;
- ◆ Automatic control of water supply system, open manifold, water diversion smooth;
- ◆ Casing made by weathering injection molding, high strength, anti-corrosion, anti-aging, anti-UV, beautiful and durable, stable performance;
- ◆ Using high-tech high-performance evaporator (wet curtain), high evaporation rate, cooling effect is good, completely odorless.



Reminder: Due to different installation environment reasons, choose a different direction of outlet, if the installation environment allows, recommend to use the outlet below type.

Model	Max airflow rate (m³/h)	Max air pressure (Pa)	Airflow style	Voltage frequency (V/Hz)	Moter Power (KW)	Working Current (A)	Wind distance (M)	Water tank Capacity (L)	Physical dimension (LWH)(mm)	Dimension of air outlet (mm)	Noise (dB)	Net weight (KG)	Effective area (KG)	Airflow adjustment	Control
ZX/A-18 Outlet below	18000	180	Axial flow	380/50	1.1	2.8	25	25	1100x1100x1000	670x670	≤71	59.5	100-150	One Speed	Switch Control
ZC/A-18 Outlet on the side	18000	180	Axial flow	380/50	1.1	2.8	25	25	1100x1100x1000	700x690	≤73	61.5	100-150	One Speed	
ZS/A-18 Outlet above	18000	180	Axial flow	380/50	1.1	2.8	25	25	1100x1100x1030	675x675	≤71	63	100-150	One Speed	

## ZX/A-30, ZS/A-30 Standard evaporative air cooler (Airflow 30,000m³/h)

- ◆ POG fan blade airfoil using the company's unique design, 6 blades casting aluminum alloy, huge amount of airflow, the effective distance of blowing is 35 meters or more;
- ◆ Casing made by injection molding, anti-corrosion, anti-aging, anti-UV, beautiful and durable, stable performance
- ◆ Using high-tech high-performance evaporator (wet curtain), high evaporation rate, cooling effect, no smell;
- ◆ Using high-quality cooling paper curtain, cooling effect is good;
- ◆ High quality cast aluminum motor, strong performance;



Reminder: Due to different installation environment reasons, choose a different direction of outlet, if the installation environment allows, recommend to use the outlet below type.

Model	Max airflow rate (m³/h)	Max air pressure (Pa)	Airflow style	Voltage frequency (V/Hz)	Moter Power (KW)	Working Current (A)	Wind distance (M)	Water tank Capacity (L)	Physical dimension (LWH)(mm)	Dimension of air outlet (mm)	Noise (dB)	Net weight (KG)	Effective area (KG)	Airflow adjustment	Control
ZX/A-30 Outlet below	30000	280	Axial flow	380/50	3	6	35	60	1330x1330x1190	900x900	≤88	113	120-200	One Speed	Switch Control
ZS/A-30 Outlet above	30000	280	Axial flow	380/50	3	6	35	60	1330x1330x1190	900x900	≤88	121	120-200	One Speed	

**ZX-18, ZX/BP-18** Luxury evaporative air cooler(Airflow 18,000m³/h)

- ◆ Full-automatic electronic display controller, easy operation.
- ◆ This model adopts high pressure mute fan having powerful airflow. It has less energy consumption, low noise and wide adaptability.
- ◆ Auto-controlled water supply system, open-type water distributor, supplying water evenly and smoothly.
- ◆ Weathering injection shapes the shell having high strength, corrosion protection, anti-aging and anti-UV. Attractive, durable and stable performance.
- ◆ Adopts high-performance evaporator (Cellulose cooling pad) processed by high technology, amazing evaporation, wonderful cooling effect, on any smell.
- ◆ Using high quality cast iron motor which has strong power.



Reminder: Due to different installation environment reasons, choose a different direction of outlet, if the installation environment allows, recommend to use the outlet below type.

Model	Max airflow rate (m³/h)	Max air pressure (Pa)	Airflow style	Voltage frequency (V/Hz)	Motor Power (KW)	Working Current (A)	Wind distance (M)	Water tank Capacity (L)	Physical dimension (LWH)(mm)	Dimension of air outlet (mm)	Noise (dB)	Net weight (KG)	Effective area (KG)	Airflow adjustment	Control
ZX-18 Outlet below	18000	180	Axial type	380/50	1.1	2.8	25	25	1100x110x1000	670x670	≤71	59.5	100-150	One speed	LCD control (single speed)
ZC-18 Outlet above	18000	180	Axial type	380/50	1.1	2.8	25	25	1100x110x1000	700x687	≤73	61.5	100-150	One speed	
ZS-18 Outlet above	18000	180	Axial type	380/50	1.1	2.8	25	25	1100x110x1030	677x677	≤71	63	100-150	One speed	
ZX/BP-18 Outlet below	18000	180	Axial type	220/50	1.1	4.8	25	25	1100x110x1000	670x670	≤71	59.5	100-150	Eight speeds	LCD control (inverter)
ZC/BP-18 Side outlet	18000	180	Axial type	220/50	1.1	4.8	25	25	1100x110x1000	700x687	≤73	61.5	100-150	Eight speeds	
ZS/BP-18 Outlet above	18000	180	Axial type	220/50	1.1	4.8	25	25	1100x110x1030	677x677	≤71	63	100-150	Eight speeds	

**ZX-30, ZX/BP-30, ZS-30, ZS/BP-30** Luxury evaporative air cooler(Airflow 30,000m³/h)

- ◆ POG fan blade airfoil using the company's unique design, 6 blades casting aluminum alloy, huge amount of airflow, the effective distance of blowing is 35 meters or more;
- ◆ Casing made by injection molding, anti-corrosion, anti-aging, anti-UV, beautiful and durable, stable performance
- ◆ Using high-tech high-performance evaporator (wet curtain), high evaporation rate, cooling effect, no smell;
- ◆ Using high-quality cooling paper curtain, cooling effect is good;
- ◆ High quality cast aluminum motor, strong performance;



Reminder: Due to different installation environment reasons, choose a different direction of outlet, if the installation environment allows, recommend to use the outlet below type.

Model	Max airflow rate (m³/h)	Max air pressure (Pa)	Airflow style	Voltage frequency (V/Hz)	Motor Power (KW)	Working Current (A)	Wind distance (M)	Water tank Capacity (L)	Physical dimension (LWH)(mm)	Dimension of air outlet (mm)	Noise (dB)	Net weight (KG)	Effective area (KG)	Airflow adjustment	Control
ZX/-30 Outlet below	30000	280	Axial flow	380/50	3	6	35	60	1330x1330x1190	900x900	≤88	113	120-200	One Speed	LCD control (single speed)
ZS/-30 Outlet above	30000	280	Axial flow	380/50	3	6	35	60	1330x1330x1190	900x900	≤88	121	120-200	One Speed	
X/BP-30 Outlet below	30000	280	Axial flow	380/50	3	6	35	60	1330x1330x1190	900x900	≤88	113	120-200	variable speed	control box
ZS/BP-30 Outlet above	30000	280	Axial flow	380/50	3	6	35	60	1330x1330x1190	900x900	≤88	121	120-200	variable speed	

## Duct fan

### GDF GDF centrifugal pipe fan

The fan is new improved product featured by high static pressure, stable running, low noise, easy installation, small size and direct connecting with pipe. It is widely used for ventilation in enterprises and civil buildings for non-corrosive, un-combustible and harmless gas. Gas cannot contain sticky material, dust & hard particle is less than 120mg/m<sup>3</sup>; Temperature range: -20℃~60℃

Model(No.)	Power(W)	Voltage(V)	Rotation(R/Min)	Volume(m <sup>3</sup> /h)	Pressure(Pa)	Noise dB(A)
400x200-41	0.26	220	1200	560~1002	230~57	≤71.5
400x200-43	0.26	380	1300	652~1165	238~120	≤72.7
500x250-61	0.22	220	850	643~1134	142~118	≤65.5
500x250-41	0.45	220	1300	833~1650	332~200	≤75.5
500x250-43	0.63	380	1310	1015~1898	382~260	≤76.5
500x300-61	0.22	220	930	1207~2132	212~188	≤71.4
500x300-41	0.63	220	1250	1617~2857	400~340	≤79.5
500x300-43	1	380	1280	1818~3050	410~352	≤80.6
600x300-61	0.44	200	850	989~1988	238~158	≤71.5
600x300-63	0.44	380	900	1048~2109	242~161	≤73.5
600x300-41	1	220	1280	1610~2847	425~307	≤81.7
600x300-43	1.5	380	1300	1837~2967	477~317	≤83.6
600x350-61	0.64	220	850	2120~3020	334~283	≤73.5
600x350-63	0.92	380	870	2311~3286	351~302	≤73.6
600x350-43	1.7	380	1200	3166~4502	469~371	≤81.5
600x350-43	2	380	1250	3520~4750	509~406	≤83.4
700x400-83	1.15	380	690	2146~3831	230~142	≤73.7
700x400-63	1.5	380	910	3108~5679	387~242	≤79.6
700x400-43	3.7	380	1300	4009~7405	894~314	≤87.8
800x500-43	1.15	380	690	3496~6646	352~243	≤74.8
800x500-63	2.5	380	890	4234~7482	576~265	≤83.5
1000x500-83	1.6	380	690	3715~6924	332~283	≤79.4
1000x500-63	3.7	380	890	4755~8863	531~453	≤84.6



### CFG Piped low noise extraction fan

CFG piped low noise fan is a piped type fan in CF series. With a characteristic of low noise, small size, large air volume and good performance, the fan is widely used in hotels, stores and civil buildings to transport air whose temperature is ≤60℃

机号 Model(No.)	功率 Power(W)	转速 Rotation(r/min)	流量 Volume(m <sup>3</sup> /h)	全压 Pressure(Pa)	噪音 Noise(A)
1.4	0.019	1380	211 ~ 157	71 ~ 104	≤44
	0.1	2320	418 ~ 208	172 ~ 346	≤49
2.5	0.04	710	600 ~ 450	80 ~ 100	≤46
	0.09	900	800 ~ 560	105 ~ 142	≤53
	0.25	1380	1200 ~ 860	225 ~ 330	≤61
3	0.09	710	1260 ~ 800	100 ~ 156	≤52
	0.18	900	1640 ~ 1060	158 ~ 246	≤58
	0.75	1380	2510 ~ 1620	370 ~ 578	≤68
3.5	0.25	710	1993 ~ 1286	126 ~ 197	≤57
	0.45	900	2599 ~ 1678	214 ~ 335	≤60



### DTC—SW Series belt—driving Centrifugal fan

In inch system, forward curved and Single Inlet  
 High efficiency, low noise, belt—driving  
 Suit matching in central air—conditioner, purification equipment and so on  
 Type we have 9—4、10—5、12—6、15—7、18—8 five different sizes  
 Air volume: 500—800m<sup>3</sup>/h  
 Pressure: maximum, to 1100Pd



**HBJS** aluminum alloy centrifugal fan

HBJS Series are the professional fans designed for carton machine to feed paper and clean dust. The semi-open impeller is casting from 10 forward curved blades and one boss, and the whole fans are featured by high pressure, smooth pressure curve, wear-resistant, anti-explosion, not producing sparks. The enterprises use the products to exhaust dust and transport mixed gases including fiber, cashmere, woody debris, dust and etc, with the temperature no higher than 80 C.

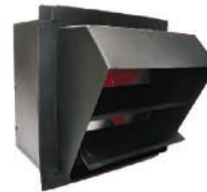
Model(No.)	Power(W)	Rotation(R/Min)	Volume(m³/h)	Pressure (Pa)	Noise dB(A)
3.15A	5.5	2900	2057~3510	2126~1535	≤ 86
3.75A	5.5	2900	3000~4493	2155~2019	≤ 87
4A	4	2900	825~3000	3060~2850	≤ 89
4.1A	7.5	2900	1450~4150	3175~2500	≤ 89



**WF** series Wall Fan

WF Series fan adopts low noise wall type energy-saving impeller and is driven by motor directly. Square casing design makes it easier to install the fan to concrete wall, brick wall or light steel pressed wallboard. The square rain cover is firm in construction and nice in appearance. The fan is mainly used for ventilation in workshop and commercial construction.

Model(No.)	Power(W)	Voltage(V)	Rotation(R/Min)	Volume(m³/h)	Pressure (Pa)
2.5A	0.09	220/380	1400	1300	26
3A	0.12	220/380	1400	1800	30
3.5A	0.18	220/380	1400	2880	48
4A	0.25	220/380	1400	4370	84
4.5A	0.37	220/380	1400	5300	88
5A	0.37	220/380	1400	5760	88
5.6A	0.55	220/380	1400	8350	110



**DFF** Series Large Air Volume Cabinet Fan

Structure: double-motor structure. Impeller: forward multi-impeller with double side blades, high efficiency & pressure, and steady air supply. Frame: made of aluminum alloy, thin. Application: suitable for Ventilation or increasing duct pressure in factories, shopping mall, entertainment places and residential buildings.

Model(No.)	Power(W)	Voltage(V)	Volume(m³/h)	Static pressure(Pa)	Noise dB(A)	Usable Area(m²)
DFF-2.0	0.8	380	5000	250	48	200~400
DFF-2.5	1.6	380	8000	400	55	320~640
DFF-3.0	3	380	13000	550	65	520~1040



## CZ Blower

### CZ Energy-saving low-noise pressure fan

CZ series adopt the centrifugal structure. Classified by outer casing and impeller, the series can be divided into two types, CZ aluminum alloy type and CZ-t rolling plate stamping type, featured by light weight, new pattern, large air flow and low noise, this series are used in some industrial devices to blow air, such as smelting, diesel vaporization heater matching, kitchen equipment, pneumatic compression facilities, industrial boilers, plastics machinery.

Model(No.)	Power(W)	Voltage(V)	Rotation(R/Min)	Volume(m <sup>3</sup> /h)	Pressure(Pa)	Noise dB(A)
180W	0.18	220/380	2800	408	1100	≤66
250W	0.25	220/380	2800	450	1200	≤68
370W	0.37	220/380	2800	690	1880	≤76
550W	0.55	220/380	2800	960	1980	≤77
750W	0.75	220/380	2800	1170	2140	≤79
900W	0.9	220/380	2800	1320	2140	≤80
1100W	1.1	220/380	2800	1404	2180	≤81
1500W	1.5	220/380	2800	1530	2400	≤83
2200W	2.2	220/380	2800	1560	2500	≤84
3000W	3	220/380	2900	1620	2650	≤89



### GZ series drying hair dryer

gz series are made of a aluminum alloy material. The whole fan is featured by low noise, large air volume, light weight, which can match the machinery and equipment . The fan inlet and outlet can adjust to needs of compression and ventilation.

Model(No.)	Power(W)	Rotation(R/Min)	Voltage(V)	Volume(m <sup>3</sup> /h)	Pressure(Pa)
GZ II-1.5"	0.05	220/380	2800	150	420
GZ I-2.5"	0.1	220/380	2800	200	540
GZ I-3"	0.14	220/380	2800	250	680
GZ I-4"	0.35	220/380	2800	560	800
GZ I-5"	0.75	220/380	2800	630	1000



### HPF-JD electrostatic fume purification

This type of fan is pedal by used for oll fume purification in the kitchen of hotel, restaurant or cannon. But it is strictly prohibited to be used for purifying the air that is inflammable, exposive, volatile and corrosive, or black smoke produced by diesel while burning.

Model(No.)	Power(W)	Voltage(V)	Volume(m <sup>3</sup> /h)	Drag (Pa)	Inlet and outlet size (mm)
HPF-JD-2	0.2	220	2000	< 150	395x415
HPF-JD-4	0.3	220	4000	< 150	520x555
HPF-JD-6	0.4	220	6000	< 150	605x665
HPF-JD-8	0.5	220	8000	< 150	645x745
HPF-JD-10	0.65	220	10000	< 150	730x835
HPF-JD-12	0.8	220	12000	< 150	810x880
HPF-JD-14	0.9	220	14000	< 150	900x920
HPF-JD-16	1	220	16000	< 150	950x990
HPF-JD-18	1.1	220	18000	< 150	950x1100
HPF-JD-20	1.25	220	20000	< 150	950x1300





**HCF** HCF backward single-plate kitchen lampblack exhauster

Impeller: Backward single-plate impeller. Convenient for clean Noise: 10% lower than similar fans. Suitable Air: Non-hypergolic, non-corrosive, dustiness ≤120mg/m<sup>3</sup>, -20℃ < air temperature < 85℃. Application: Suitable for kitchen lampblack exhausting and using with smoke punter.

Series	Model(No.)	Power(W)	Voltage(V)	Rotation(R/Min)	Volume(m <sup>3</sup> /h)	Pressure(Pa)	Pressure(Pa)
HCF-I、II型 A式风机	3.6A	0.75	220/380	1450	1876 ~ 3088	405 ~ 201	385 ~ 145
		2.2	380	2900	3752 ~ 6175	1620 ~ 805	1540 ~ 581
	4.0A	1.1	220/380	1450	2330 ~ 4378	509 ~ 295	492 ~ 249
		4	380	2900	4660 ~ 8576	2035 ~ 1178	1969 ~ 997
	4.5A	1.1	220/380	1450	3070 ~ 6100	675 ~ 392	650 ~ 307
		5.5	380	2900	6138 ~ 12200	2700 ~ 1565	2605 ~ 1339
	5.0A	2.2	220/380	1450	4763 ~ 9064	818 ~ 473	782 ~ 376
		11	380	2900	9515 ~ 18128	3272 ~ 1891	3130 ~ 1505
	5.6A	2.2	220/380	1450	5235 ~ 11621	1078 ~ 540	1047 ~ 495
		18.5	380	2900	10470 ~ 23241	4301 ~ 2159	4188 ~ 1980
	6.0A	1.5	380	960	5207 ~ 9642	520 ~ 306	468 ~ 177
		3	380	1450	7864 ~ 14293	1187 ~ 699	1069 ~ 403
	7.0A	1.1	380	720	6877 ~ 11288	398 ~ 221	386 ~ 177
		2.2	380	960	9169 ~ 15051	708 ~ 329	687 ~ 258
		7.5	380	1450	13845 ~ 22734	1616 ~ 750	1567 ~ 650
	8.0A	2.2	380	720	10432 ~ 17665	564 ~ 245	502 ~ 179
		5.5	380	960	13909 ~ 23552	1002 ~ 436	502 ~ 179
		15	380	1450	21003 ~ 35564	2286 ~ 995	2030 ~ 720
HCF-III型E式 (皮带传动) 风机	4.0E	4	380	2600	4178 ~ 7594	1865 ~ 943	1586 ~ 752
		3	380	2400	2856 ~ 7010	1589 ~ 803	1351 ~ 641
		2.2	380	2000	3213 ~ 5842	1103 ~ 558	938 ~ 445
		1.5	380	1800	2892 ~ 5258	893 ~ 452	760 ~ 360
	4.5E	1.1	380	1600	2571 ~ 4673	706 ~ 357	600 ~ 284
		4	380	2600	5949 ~ 10812	2147 ~ 1011	2082 ~ 730
		3	380	2400	5491 ~ 9980	1869 ~ 861	1774 ~ 622
		2.2	380	2200	5033 ~ 9149	1536 ~ 723	1491 ~ 346
	5.0E	1.5	380	1800	4118 ~ 7486	1244 ~ 586	1208 ~ 280
		1.1	380	1600	3660 ~ 6654	982 ~ 463	954 ~ 221
		7.5	380	2600	8160 ~ 14931	2512 ~ 1248	2388 ~ 901
		5.5	380	2400	7532 ~ 13689	2140 ~ 1063	2035 ~ 767
5.6E	4	380	2000	6276 ~ 11407	1486 ~ 738	1413 ~ 532	
	3	380	1800	5648 ~ 9126	1204 ~ 598	1144 ~ 431	
	2.2	380	1600	5020 ~ 8112	951 ~ 472	904 ~ 340	
	1.5	380	1430	4487 ~ 7250	852 ~ 422	722 ~ 272	
6.0E	11	380	2400	10583 ~ 19234	2685 ~ 1334	2552 ~ 963	
	7.5	380	2200	9693 ~ 17618	2253 ~ 1122	1632 ~ 807	
	5.5	380	2000	8812 ~ 16017	1862 ~ 927	1349 ~ 667	
	4	380	1800	7931 ~ 14415	1508 ~ 751	1430 ~ 540	
7.0E	3	380	1600	7050 ~ 12813	1192 ~ 593	1130 ~ 427	
	2.2	380	1400	6174 ~ 11220	913 ~ 454	865 ~ 327	
	15	380	2400	11295 ~ 19234	2685 ~ 1334	3079 ~ 1314	
	11	380	2200	9693 ~ 17618	2253 ~ 1122	2588 ~ 1104	
8.0E	7.5	380	2000	8812 ~ 16017	1862 ~ 927	2139 ~ 912	
	5.5	380	1800	7931 ~ 14415	1508 ~ 751	1733 ~ 739	
	4	380	1600	7050 ~ 12813	1192 ~ 593	1370 ~ 584	
	3	380	1300	6174 ~ 11220	913 ~ 454	905 ~ 386	
9.0E	18.5	380	2000	16631 ~ 30225	2715 ~ 1348	2581 ~ 784	
	15	380	1800	14968 ~ 27205	2199 ~ 1092	2091 ~ 635	
	11	380	1650	13721 ~ 24938	1848 ~ 917	1757 ~ 534	
	7.5	380	1450	12057 ~ 21914	1427 ~ 709	1357 ~ 512	
HCF-III E Belt drive	4.0E	5.5	380	1280	10646 ~ 19345	1112 ~ 552	1057 ~ 399
		4	380	1120	9315 ~ 16927	852 ~ 432	810 ~ 306
	4.5E	3	380	1000	8318 ~ 15116	679 ~ 337	705 ~ 266
		18.5	380	1600	20561 ~ 37370	2569 ~ 1138	2491 ~ 956
	5.0E	15	380	1450	18641 ~ 33880	2110 ~ 935	2046 ~ 810
		11	380	1300	16702 ~ 30356	1694 ~ 751	1643 ~ 650
	5.6E	7.5	380	1200	15416 ~ 28019	1443 ~ 640	1400 ~ 554
		5.5	380	1100	14121 ~ 25665	1212 ~ 538	1176 ~ 466
	6.0E	4	380	960	12314 ~ 22380	922 ~ 409	895 ~ 355
		30	380	1560	31194 ~ 51494	3616 ~ 1970	3452 ~ 1673
7.0E	22	380	1450	28995 ~ 47893	3124 ~ 1702	2982 ~ 1445	
	18.5	380	1320	25735 ~ 43572	2589 ~ 1410	2472 ~ 1198	
	15	380	1250	24993 ~ 41261	2322 ~ 1265	2216 ~ 1074	
	11	380	1120	22395 ~ 36970	1863 ~ 1015	1779 ~ 862	
8.0E	7.5	380	960	19196 ~ 31688	1369 ~ 746	1307 ~ 634	
	5.5	380	800	15997 ~ 26407	951 ~ 518	908 ~ 440	



HCF-I Type A Spiral Type



HCF-II Type A (Square)



HCF-III E Belt drive

Profile

Certificate

Facilities

Product

Summary

Projects

## Exhaust fan

### 11-62A multi-wings centrifugal fan

Featured by high efficiency, low rotation, low noise, this type of centrifugal fan has advanced impeller structure, scroll case of log spiral, exquisite design, little vibration, easy operation. It is suitable for ventilation and oil-air expiration of the restaurant, kitchen and air-condition systems, and the ventilation of mineral factory. The transporting medium is air of other non-spontaneous-combustion and non-explosive-combustion air with no harm to human, the air transferred shall not contain any adhesive material, dust and grain and the concentration shall not exceed 150mg/m<sup>3</sup>, with the temperature no higher than 80°C.

Model(No.)	Power(W)	Voltage(V)	Rotation(R/Min)	Volume(m <sup>3</sup> /h)	Pressure(Pa)	Noise dB(A)
2.8A	0.75	220/380	1400	1370 ~ 2760	480 ~ 345	≤67
3A	0.75	380	910	1408 ~ 2850	300 ~ 260	≤63
	1.5	220/380	1420	2150 ~ 4270	654 ~ 535	≤73
	2.2	220/380	1420	2200 ~ 4400	650 ~ 520	≤74
3.5A	1.1	380	910	3200 ~ 5080	438 ~ 367	≤69
	3	220/380	1420	5075 ~ 8065	1000 ~ 840	≤78
	2.2	220/380	1420	2200 ~ 4400	960 ~ 750	≤76
4A	2.2	380	960	4860 ~ 7807	684 ~ 586	≤70
	3	380	960	5742 ~ 8830	670 ~ 520	≤73
4.5A	3	380	960	6175 ~ 9220	896 ~ 837	≤76
	4	380	960	7342 ~ 11120	880 ~ 837	≤78
5A	4	380	960	8127 ~ 10051	1167 ~ 1090	≤74
	5.5	380	960	8857 ~ 13021	1147 ~ 1018	≤77
6A	7.5	380	960	9820 ~ 16894	1200 ~ 990	≤83
6.5A	11	380	970	10800 ~ 21000	1270 ~ 1100	≤85
7A	11	380	730	12053 ~ 21330	1080 ~ 950	≤82



### 11-62(E) multi-blade centrifugal fan

11-62E is a new product improved on the base of 11-62-a type centrifugal fan, which has a larger volume, a lower noise than 11-62-A type. Featured by firm structure, new design, nice appearance, etc. the product is an ideal equipment for ventilation in modern hotel, restaurant as well as air-condition unit. The transporting medium is air or other non-spontaneous-combustion and non-combustion air with no harm to human. The air transferred shall not contain any adhesive material, with the temperature no higher than 80°C.

Model(No.)	Power(W)	Rotation(R/Min)	Volume(m <sup>3</sup> /h)	Pressure(Pa)	Noise dB(A)
3E	1.5	1420	1959 ~ 4162	469 ~ 584	≤74
3.5E	1.1	960	2648 ~ 4303	353 ~ 265	≤70
	3	1420	3917 ~ 6365	772 ~ 582	≤79
4E	2.2	850	3984 ~ 7703	394 ~ 276	≤72
	3	960	4500 ~ 8700	502 ~ 352	≤74
5E	4	820	4841 ~ 8542	628 ~ 560	≤78
	5.5	960	5667 ~ 10000	861 ~ 767	≤81
6E	7.5	720	7000 ~ 16000	749 ~ 413	≤80
6.5E	7.5	650	8035 ~ 18364	716 ~ 395	≤81
	11	720	8900 ~ 20342	879 ~ 485	≤83
7E	11	650	10035 ~ 22937	830 ~ 458	≤83
	15	720	11116 ~ 25407	1019 ~ 562	≤85
7.5E	11	600	13846 ~ 23077	924 ~ 507	≤83
	15	650	15000 ~ 25000	1085 ~ 595	≤85
8E	15	560	12923 ~ 28000	894 ~ 700	≤84
	18.5	610	14077 ~ 30500	1061 ~ 831	≤86
	30	720	16616 ~ 36000	1078 ~ 1158	≤89



**DF** DF series of multi-wing centrifugal fan

Optimal air duct design , Motor with high-efficiency&long-life ball bearing, Optimized efficiency;suitable for continuous ventilation, Application: Ventilation for hotel, places of entertainment and buildings.

Model(No.)	Power(W)	Voltage(V)	Rotation(R/Min)	Volume(m³/h)	Pressure(Pa)	Noise dB(A)
DF-1.3A	0.18	220/380	2800	405	450	≤75
DF-1.6A	0.25	220/380	2800	504	960	≤75
	0.37	220/380	2800	660	850	≤76
DF-2.0A	0.55	220/380	2800	860	1020	≤76
	0.75	220/380	2800	1200	1210	≤80
DF-2.15A	1.5	220/380	2800	1900 ~ 2500	1286 ~ 988	≤82
DF-2.25A	2.2	220/380	2800	1940 ~ 2626	1564 ~ 1536	≤85



**HTFC** Type I single-speed fan for fire-control

**DT** Low noise centrifugal fan

HTFC-I and DT are widely used for fire control and ventilation in places such as hotels, coliseum, schools, restaurants, cinemas, halls, high-class residences and mining industries. The two series are also fit for air-condition system and environmental purification system. Motor installed outside is used for fire control and ventilation, while inside one for ventilation and air renewal. The transporting medium is air or other non-spontaneous-combustion and non-explosive-combustion air with no harm to human. The air transferred shall not contain any adhesive material, dust and grain and the concentration shall not exceed 150mg/m³, with the temperature no higher than 80C. when the HTFC series are used for fire control, the fans can run more than 30 minutes continually under the condition that the air and smoke temperature is at 280°C.

Model(No.)	Power(W)	Rotation(r/min)	Volume(m³/h)	Pressure(Pa)	Static Pressure(Pa)	Noise(A)
9"	0.55	1000	1590 ~ 2676	141 ~ 86	125 ~ 40	≤66
	0.75	1200	1790 ~ 3010	178 ~ 110	157 ~ 52	≤67
	1.1	1400	2386 ~ 4014	317 ~ 195	280 ~ 91	≤69
	1.5	1600	2784 ~ 4683	432 ~ 266	382 ~ 125	≤71
10"	0.75	1000	2238 ~ 3760	177 ~ 108	154 ~ 44	≤67
	1.1	1200	2514 ~ 4230	224 ~ 138	196 ~ 58	≤68
	1.5	1500	3352 ~ 5640	398 ~ 245	348 ~ 102	≤70
	2.2	1630	3911 ~ 6580	542 ~ 334	473 ~ 139	≤72
12"	1.1	1000	3771 ~ 6344	251 ~ 154	218 ~ 61	≤68
	1.5	1100	4243 ~ 7137	318 ~ 196	276 ~ 78	≤69
	2.2	1200	5657 ~ 9516	565 ~ 348	491 ~ 139	≤71
	3	1400	6600 ~ 11102	769 ~ 474	668 ~ 189	≤73
15"	1.5	670	4607 ~ 7749	196 ~ 121	169 ~ 44	≤69
	2.2	750	5528 ~ 9298	282 ~ 174	243 ~ 64	≤70
	3	850	6526 ~ 10977	393 ~ 242	339 ~ 88	≤72
	4	930	6910 ~ 11623	441 ~ 272	380 ~ 99	≤73
18"	2.2	600	7733 ~ 13007	284 ~ 176	246 ~ 68	≤70
	3	720	9279 ~ 15608	408 ~ 253	339 ~ 88	≤71
	4	800	10310 ~ 17342	504 ~ 312	436 ~ 120	≤72
	5.5	930	10697 ~ 17993	543 ~ 336	470 ~ 130	≤74
20"	3	560	9196 ~ 15469	290 ~ 200	256 ~ 105	≤71
	4	610	10017 ~ 16850	345 ~ 237	305 ~ 124	≤72
	5.5	720	11824 ~ 19889	480 ~ 330	424 ~ 173	≤74
	7.5	800	13137 ~ 22098	593 ~ 407	524 ~ 213	≤75
22"	4	600	14026 ~ 23590	422 ~ 273	372 ~ 132	≤72
	5.5	650	15195 ~ 25556	495 ~ 320	436 ~ 154	≤73
	7.5	720	16831 ~ 28308	607 ~ 393	535 ~ 190	≤75
	11	800	18701 ~ 31453	750 ~ 485	661 ~ 233	≤77
25"	5.5	520	16896 ~ 28416	373 ~ 219	326 ~ 86	≤73
	7.5	580	18845 ~ 31694	464 ~ 272	406 ~ 107	≤74
	11	650	21120 ~ 35520	583 ~ 342	510 ~ 134	≤76
	15	720	23394 ~ 39345	715 ~ 419	625 ~ 164	≤78
28"	7.5	500	21224 ~ 35696	438 ~ 297	388 ~ 155	≤74
	11	560	23771 ~ 39980	549 ~ 375	486 ~ 179	≤76
	15	600	25469 ~ 42836	630 ~ 430	558 ~ 226	≤77
	18.5	650	27591 ~ 46405	739 ~ 505	654 ~ 265	≤79
30"	22	720	30562 ~ 51403	907 ~ 619	803 ~ 325	≤80
	11	520	27958 ~ 47022	551 ~ 341	486 ~ 157	≤75
	15	560	30108 ~ 50639	639 ~ 395	563 ~ 181	≤77
	18.5	580	31183 ~ 53563	685 ~ 424	604 ~ 185	≤79
33"	22	610	32796 ~ 55160	758 ~ 469	668 ~ 215	≤81
	30	650	34947 ~ 58777	860 ~ 532	758 ~ 244	≤82
	11	400	27840 ~ 45800	424 ~ 290	341 ~ 115	≤76
	15	450	31320 ~ 51530	545 ~ 367	431 ~ 146	≤77
36"	18.5	500	34800 ~ 57260	680 ~ 453	533 ~ 180	≤79
	22	550	38280 ~ 62980	822 ~ 548	644 ~ 218	≤81
	30	600	41760 ~ 68700	970 ~ 652	767 ~ 259	≤83
	37	630	43850 ~ 72140	1080 ~ 719	846 ~ 286	≤84
36"	15	350	31490 ~ 51810	396 ~ 264	309 ~ 103	≤78
	18.5	400	35990 ~ 59210	518 ~ 344	405 ~ 134	≤79
	22	450	40490 ~ 66610	654 ~ 436	512 ~ 169	≤81
	30	500	44990 ~ 74010	808 ~ 538	632 ~ 209	≤82
36"	37	550	49490 ~ 81420	970 ~ 651	864 ~ 253	≤84
	45	580	51280 ~ 85855	1086 ~ 723	950 ~ 281	≤85



# Fire control fan

**HTFC** II type single-speed fan for fire-control

**DT** low noise centrifugal fan

HTFC-I and DT are widely used for fire control and ventilation in places such as hotels, coliseum, schools, restaurants, cinemas, halls, high-class residences and mining industries. The two series are also fit for air-condition system and environmental purification system. Motor installed outside is used for fire control and ventilation, while inside one for ventilation and air renewal. The transporting medium is air or other non-spontaneous-combustion and non-explosive-combustion air with no harm to human. The air transferred shall not contain any adhesive material, dust and grain and the concentration shall not exceed 150mg/m<sup>3</sup>, with the temperature no higher than 80C. when the HTFC series are used for fire control, the fans can run more than 30 minutes continually under the condition that the air and smoke temperature is at 280°C.

Model(No.)	Power(W)	Rotation(R/Min)	Volume(m <sup>3</sup> /h)	Pressure(Pa)
12"	6/4P 0.9/2.5	800/1200	3771 ~ 6344	251 ~ 154
			5657 ~ 9516	565 ~ 348
	6/4P 1.1/3.2	920/1400	4337 ~ 7295	332 ~ 204
			6600 ~ 11102	769 ~ 474
15"	6/4P 1.5/4.7	700/1500	5374 ~ 9039	266 ~ 164
			8061 ~ 13559	599 ~ 370
	6/4P 2.2/6.7	800/1200	6142 ~ 10331	348 ~ 214
			9213 ~ 15497	784 ~ 483
18"	6/4P 2.2/6.7	600/900	7733 ~ 13007	284 ~ 176
			11598 ~ 19509	637 ~ 394
	6/4P 3.1/9.5	700/1050	9021 ~ 15174	385 ~ 239
			13531 ~ 22761	867 ~ 538
20"	6/4P 2.2/6.7	530/800	8703 ~ 14639	259 ~ 161
			13137 ~ 22098	591 ~ 368
	6/4P 3.1/9.5	600/900	9852 ~ 16573	331 ~ 206
			14779 ~ 24860	746 ~ 463
22"	6/4P 3.1/9.5	530/800	12389 ~ 20837	329 ~ 204
			18701 ~ 31453	750 ~ 466
	6/4P 4/12	600/900	14026 ~ 23590	422 ~ 262
			21039 ~ 35385	949 ~ 589
25"	6/4P 5.1/5.5	480/720	15596 ~ 26230	301 ~ 186
			23394 ~ 39345	678 ~ 419
	6/4P 8.5/24	530/800	17220 ~ 28962	367 ~ 227
			25993 ~ 43716	837 ~ 518
28"	6/4P 8.5/24	480/720	21041 ~ 34268	388 ~ 240
			30562 ~ 51403	875 ~ 542
	6/4P 11/33	530/800	22496 ~ 37838	474 ~ 293
			33957 ~ 57114	1080 ~ 667
30"	6/4P 11/33	430/650	26882 ~ 45213	508 ~ 314
			34947 ~ 58777	860 ~ 532
	6/4P 11/33	480/720	29032 ~ 48829	593 ~ 366
			38710 ~ 65106	1055 ~ 652



## ZY series Energy-saving low-noise blower

This blower is used in some industrial devices such as vaporization of diesel heater, fuelled tobacco equipment, kitchen equipment, compression facies, plastics machinery, etc. the places should not contain any flammable, explosive, toxic and corrosive gases, where the temperature is lower than 80°C.

Model(No.)	Power(W)	Rotation(R/Min)	Voltage(V)	Volume(m <sup>3</sup> /h)	Pressure(Pa)
ZY-50	50	2800	220	123	319
ZY-80	80	2800	220	127	321
ZY-100	100	2800	220	132	330
ZY-120	120	2800	220	136	335



**HTF** Type A fire-control fan for extraction smoke

It is suitable for ventilation and fire control of tall buildings, subway tunnel, underground stores, gymnasias, etc. This fan is set up with double-speed motor, it operates at a low speed normally and used for ventilation. Once occurrence of a fire, the fan is automatically transferred into high-speed and discharges smoke by the electric control system, which facilitates safe evacuation of personnel on the fire spot. The transporting medium is air or other non-spontaneous-combustion and non-explosive combustion air with no harm to human. The air transferred shall not contain any adhesive material, dust and grain and the concentration shall not exceed 150mg/m<sup>3</sup> when the temperature shall not exceed 80°C. When used for fire control, the fans can run more than 30 minutes continually under the condition that the air and smoke temperature is at 280°C.



Series	Model(No.)	Power(W)	Rotation(r/min)	Volume(m <sup>3</sup> /h)	Pressure(Pa)	Static Pressure(Pa)	Noise(A)
HTF-I-(A) Single speed series	3.5	1.1	2800	3076 ~ 4426	536 ~ 317	491 ~ 225	≤78
	4	1.5	2800	4516 ~ 5790	544 ~ 337	487 ~ 244	≤79
	4.5	2.2	2800	6197 ~ 8500	735 ~ 462	663 ~ 326	≤84
	5	3	2900	7413 ~ 11019	813 ~ 569	747 ~ 423	≤86
	5.5	4	2900	1099 ~ 15200	1040 ~ 486	924 ~ 367	≤86
	6	5.5	2900	13197 ~ 16090	1104 ~ 862	1007 ~ 689	≤86
	6.5	5.5	1450	14888 ~ 21500	706 ~ 511	612 ~ 319	≤86
	7	7.5	1450	18908 ~ 24380	816 ~ 726	710 ~ 542	≤88
	8	7.5	1450	26012 ~ 31421	702 ~ 572	596 ~ 393	≤89
	9	11	1450	27613 ~ 33510	910 ~ 757	821 ~ 626	≤90
	10	11	1450	40398 ~ 47322	852 ~ 578	726 ~ 404	≤90
	11	15	1450	46539 ~ 53040	826 ~ 659	702 ~ 511	≤92
	12	18.5	970	57600 ~ 65400	796 ~ 673	671 ~ 517	≤93
	13	18.5	970	56100 ~ 74700	930 ~ 594	803 ~ 446	≤94
15	22	970	76041 ~ 93800	819 ~ 623	736 ~ 496	≤95	

Series	Model(No.)	Power(W)	Rotation(r/min)	Volume(m <sup>3</sup> /h)	Pressure(Pa)	Static Pressure(Pa)	Noise(A)
HTF-III-(A) Low speed series	4	0.55	1400	2258 ~ 2895	137 ~ 84	122 ~ 61	≤71
	4.5	0.75	1400	3099 ~ 4250	184 ~ 116	166 ~ 81	≤74
	5	1.1	1400	3707 ~ 5510	203 ~ 142	187 ~ 106	≤77
	6	1.5	1400	6467 ~ 7884	265 ~ 207	242 ~ 165	≤78
	7	3	960	12517 ~ 16140	358 ~ 318	311 ~ 238	≤84
	8	3	960	17220 ~ 20801	308 ~ 251	261 ~ 172	≤84
	9	4	960	18280 ~ 22184	399 ~ 332	360 ~ 275	≤85
	10	5.5	960	26743 ~ 31327	373 ~ 253	318 ~ 177	≤86
	11	5.5	960	30809 ~ 35112	362 ~ 289	308 ~ 224	≤87
	12	11	730	43776 ~ 48704	460 ~ 389	388 ~ 299	≤89
	13	11	730	42636 ~ 56772	537 ~ 343	464 ~ 257	≤91
	15	15	730	57031 ~ 70350	461 ~ 350	414 ~ 279	≤92

## Fire control fan

### HTF Type A fire-control fan for extraction smoke

It is suitable for ventilation and fire control of tall buildings, subway tunnel, underground stores, gymnasias, etc. This fan is set up with double-speed motor, it operates at a low speed normally and used for ventilation. Once occurrence a fire, the fan is automatically transferred into high-speed and discharge smoke by the electric control system, which facilitates safe evacuation of personnel on the fire spot. The transporting medium is air or other non-spontaneous-combustion and non-explosive combustion air with no harm to human. The air transferred shall not contain any adhesive material, dust and grain and the concentration shall not exceed 150mg/m<sup>3</sup> when the temperature shall not exceed 80°C. When used for fire control, the fans can run more than 30 minutes continually under the condition that the air and smoke temperature is at 280°C.



Series	Model(No.)	Power(W)	Rotation(r/min)	Volume(m <sup>3</sup> /h)	Pressure(Pa)	Static Pressure(Pa)	Noise(A)
HTF-II-(A) Double speed series	5	0.8/3.1	2900	7413 ~ 11019	813 ~ 569	747 ~ 423	≤80
			1450	3707 ~ 5510	203 ~ 142	187 ~ 106	≤75
	6	1.4/5.9	2900	13197 ~ 16090	1104 ~ 862	1007 ~ 689	≤86
			1450	6467 ~ 7884	265 ~ 207	424 ~ 165	≤75
	7	2.2/6.7	1450	18908 ~ 24380	816 ~ 726	710 ~ 542	≤88
			960	12517 ~ 16140	358 ~ 318	311 ~ 238	≤80
	8	2.2/6.7	1450	26012 ~ 31421	702 ~ 572	596 ~ 393	≤89
			960	17220 ~ 20801	308 ~ 251	261 ~ 172	≤80
	9	4-12	1450	27613 ~ 33510	910 ~ 757	821 ~ 626	≤90
			960	18280 ~ 22184	399 ~ 332	360 ~ 275	≤81
	10	4-12	1450	40398 ~ 47322	852 ~ 578	726 ~ 404	≤90
			960	26743 ~ 31327	373 ~ 253	318 ~ 177	≤80
	11	5.1/15.5	1450	46539 ~ 53040	826 ~ 659	702 ~ 511	≤92
			960	30809 ~ 35112	362 ~ 289	3087 ~ 224	≤83
	12	8.5/17	960	57600 ~ 65400	796 ~ 673	671 ~ 517	≤93
			720	43776 ~ 49704	460 ~ 389	388 ~ 299	≤83
	13	8.5/17	960	56100 ~ 74700	930 ~ 594	803 ~ 446	≤94
			720	42636 ~ 56772	537 ~ 343	464 ~ 257	≤84
15	11-21	960	76041 ~ 93800	819 ~ 623	736 ~ 496	≤95	
		720	57031 ~ 70350	461 ~ 350	414 ~ 279	≤85	

### PXG Ring blower type

It is a blowing dual-use generic or inspiratory gas source blower. Featured by compact structure, small size, light weight & low noise, it is using dedicated motor, sending anhydrous oil-free gas. It is mainly used for supporting devices, water treatment aeration, fish farming & raising, dust extraction, gas transmission, eeding, collection etc.

Model(No.)	Power(W)	Rotation(r/min)	Volume(m <sup>3</sup> /h)	Pressure(Pa)	Vacuum(kPa)
PXG-0.18	0.18	2900	20~39	7.4~3.9	3.8
PXG-0.25	0.25	2900	23~45	8.2~4.3	4.2
PXG-0.37	0.37	2900	32~58	9.8~5.3	5.5
PXG-0.55	0.55	2900	36~65	11.2~6.7	6.8
PXG-0.75	0.75	2900	40~70	11.9~7.4	8
PXG-1.1	1.1	2900	62~98	13.8~8.5	11
PXG-1.5	1.5	2900	133~172	25.3~10.2	18
PXG-2.2	2.2	2900	170~210	27.6~15.1	20
PXG-3	3	2900	255~299	29.4~17.2	21
PXG-4	4	2900	276~328	32.6~22.8	26
PXG-5.5	5.5	2900	325~370	39.3~25.7	29
PXG-7.5	7.5	2900	429~478	41.9~29.8	30



## HTF Type B fire-control fan for extraction smoke

## Fire control fan

It is suitable for ventilation and fire control of tall buildings, subway tunnel, underground stores, gymnasium, etc. This fan is set up with double-speed motor, it operates at a low speed normally and used for ventilation. Once occurrence a fire, the fan is automatically transferred into high-speed and discharge smoke by the electric control system, which facilitates safe evacuation of personnel on the fire spot.

Series	Model(No.)	Power(W)	Rotation(r/min)	Volume(m³/h)	Pressure(Pa)	Noise(A)	
HTF-I(B) Single speed series	3	2.2	2800	4070 ~ 5305	915 ~ 710	≤73	
	4	4	2900	5430 ~ 7860	1143 ~ 910	≤78	
	4.5	5.5	2900	5880 ~ 9520	1247 ~ 910	≤80	
	5	5.5	2900	7360 ~ 13000	1250 ~ 805	≤83	
	6	7.5	2900	15600 ~ 20840	916 ~ 776	≤85	
	7	11	1450	19680 ~ 25700	1018 ~ 878	≤82	
	8	15	1450	28320 ~ 37821	978 ~ 866	≤89	
	9	18.5	1450	36547 ~ 44398	978 ~ 895	≤90	
	10	22	1450	40750 ~ 54081	1134 ~ 949	≤91	
	11	30	1470	48530 ~ 60123	1128 ~ 870	≤92	
	12	30	980	46034 ~ 70231	1100 ~ 850	≤93	
	13	30	980	56845 ~ 89536	986 ~ 680	≤94	
	15	37	980	60438 ~ 116420	1150 ~ 650	≤95	
	HTF-II(B) Double speed series	5	1.4/5.9	2900	7360 ~ 13000	1250 ~ 805	≤83
			1.4/5.9	1450	3680 ~ 6500	313 ~ 201	≤75
6		2.8/12.5	2900	15600 ~ 20840	916 ~ 776	≤85	
		2.8/12.5	1450	7800 ~ 10420	229 ~ 194	≤76	
7		4/12	1450	19680 ~ 25700	1018 ~ 878	≤82	
		4/12	960	13029 ~ 17015	644 ~ 385	≤73	
8		6.2/18	1450	28320 ~ 37810	978 ~ 866	≤89	
		6.2/18	960	18750 ~ 25030	429 ~ 380	≤79	
9		6.2/18	1450	36547 ~ 44398	978 ~ 895	≤90	
		6.2/18	960	24196 ~ 29395	429 ~ 392	≤80	
10		8.5/24	1450	40750 ~ 54081	1134 ~ 949	≤91	
		8.5/24	960	26979 ~ 35805	479 ~ 415	≤81	
11		11/33	1450	48530 ~ 60123	1128 ~ 870	≤92	
		11/33	960	36398 ~ 45092	494 ~ 381	≤82	
12		15/30	960	46034 ~ 70231	1100 ~ 850	≤93	
		15/30	720	34526 ~ 52670	619 ~ 478	≤83	
13		15/30	960	56845 ~ 89536	986 ~ 680	≤94	
		15/30	720	42637 ~ 67152	555 ~ 383	≤83	
15		18/37	960	60743 ~ 116420	1150 ~ 650	≤95	
		18/37	720	45328 ~ 87315	647 ~ 366	≤87	



## HL3-2A\HLF-6 Mixed flow fan

HL3-2A\HLF-6 mixed flow fan is a new kind of fan between an axial fan and a centrifugal fan. The product is featured by new design, compact structure, small size, light weight, high efficiency, high pressure, low noise, easy installation, etc. It can take place of the low and middle pressure centrifugal fans under 2000pa and is widely used to transport air and remove dust in industrial civil buildings.

Model(No.)	Power(W)	Voltage(V)	Volume(m³/h)	Pressure(Pa)	Rotation(r/min)
5	2.2	380	9091 ~ 5361	402 ~ 554	1420
	0.75	380	5966 ~ 3549	176 ~ 243	910
6	5.5	380	15571 ~ 9264	578 ~ 798	1450
	1.5	380	10309 ~ 6133	253 ~ 350	960
	0.75	380	7732 ~ 4600	142 ~ 197	720
7	11	380	24726 ~ 14710	787 ~ 1086	1450
	3	380	16370 ~ 9340	345 ~ 476	960
	1.5	380	12278 ~ 7306	194 ~ 268	720
8	18.5	380	36908 ~ 21959	1028 ~ 1419	1450
	5.5	380	24436 ~ 14538	451 ~ 622	960
	2.2	380	18327 ~ 10904	235 ~ 350	720
9	30	380	52551 ~ 31266	1301 ~ 1796	1470
	11	380	34793 ~ 20700	570 ~ 787	960
	4	380	26094 ~ 14789	320 ~ 443	720



Profile

Certificate

Facilities

Product

Summary

Projects

# Fire control fan

## SWF mixed flow fan

It is widely used for the ventilation of industrial and mining enterprises, hotels, restaurants, stadiums, and civil buildings and especially duct augment pressure ventilation. The air transferred shall not be flammable, explosive, corrosive, dust and grain and the concentration shall not exceed 150mg/m<sup>3</sup> when the temperature of transporting medium shall not exceed 80°C.

Series	Model(No.)	Power(W)	Rotation(R/Min)	Volume(m <sup>3</sup> /h)	Pressure(Pa)
SWF-I typenixed flow fan	SWF-I-3.5A	0.25	1400	2045 ~ 2640	142 ~ 128
	SWF-I-4A	0.37	1400	3053 ~ 3916	186 ~ 168
	SWF-I-4.5A	0.55	1400	3392 ~ 4352	203 ~ 207
	SWF-I-5A	1.1	1400	5252 ~ 7433	300 ~ 220
	SWF-I-6A	1.5	1400	8121 ~ 10000	325 ~ 200
	SWF-I-6.5A	2.2	1450	10325 ~ 12714	381 ~ 235
	SWF-I-7A	3	1420	11780 ~ 15889	470 ~ 329
	SWF-I-8A	4	960	18636 ~ 25467	382 ~ 193
	SWF-I-8.5A	5.5	960	22353 ~ 30546	431 ~ 218
	SWF-I-9A	5.5	960	27174 ~ 34206	430 ~ 282
	SWF-I-10A	7.5	960	36916 ~ 44054	371 ~ 288
	SWF-I-11A	11	960	43572 ~ 48729	370 ~ 310
	SWF-I-12A	15	730	27226 ~ 64292	498 ~ 429
SWF-I-13A	15	730	63699 ~ 71565	508 ~ 441	

Series	Model(No.)	Power(W)	Rotation(R/Min)	Volume(m <sup>3</sup> /h)	Pressure(Pa)
SWF-II typenixed flow fan	SWF-II-3.5A	2.2	2850	4145 ~ 5599	970 ~ 920
	SWF-II-4A	4	2850	7681 ~ 8358	1266 ~ 1198
	SWF-II-4.5A	5.5	2850	7315 ~ 9937	1218 ~ 918
	SWF-II-5A	5.5	2850	11058 ~ 13422	1273 ~ 973
	SWF-II-6A	5.5	1450	11146 ~ 14099	821 ~ 722
	SWF-II-6.5A	11	1450	14171 ~ 17925	964 ~ 848
	SWF-II-7A	11	1450	17699 ~ 22388	1118 ~ 983
	SWF-II-8A	7.5	960	17492 ~ 22126	640 ~ 563
	SWF-II-8.5A	11	960	20981 ~ 26539	723 ~ 636
	SWF-II-9A	11	960	24905 ~ 31503	810 ~ 712
	SWF-II-10A	18.5	960	34163 ~ 43214	1000 ~ 879
	SWF-II-11A	18.5	960	45471 ~ 57518	1150 ~ 1011
	SWF-II-12A	22	960	62058 ~ 68359	1184 ~ 1025
	SWF-II-13A	30	960	76280 ~ 84386	1200 ~ 1030





## BF type low noise fan

BF series fan is designed to meet the requirements.operating conditions for the air exhaust equipment , which can regulate air flow according to seasonal variations and operating conditions to save energy consumption Featured by smooth running , low noise,small size , light weight . & convenient maintenance , it can supply air to openings of different directions . Fan is widely used for ventilation in air conditioning system in buildings , factories etc . Upon request,the fan can regulate air flow & pressure through AC POWER SOURCE and it can be remote control by electronic control box BF series fan uses external rotor motor dua-inlet structure.all-metal frame & removable acoustic insulation panels , which is flexible for installation.

Model(No.)	Power(W)	Volume(m <sup>3</sup> /h)	Pressure(Pa)	Static Pressure(Pa)
BF-I-No2.0	0.18-4P	852 ~ 1532	227 ~ 208	217 ~ 176
	0.25-4P	1066 ~ 2348	251 ~ 245	213 ~ 182
	0.32-4P	1568 ~ 3010	266 ~ 245	219 ~ 145
	0.12-6P	931 ~ 1759	110 ~ 102	92 ~ 60
	0.18-6P	1350 ~ 2501	114 ~ 91	94 ~ 40
BF-I-No2.25	0.32-4P	1304 ~ 2090	327 ~ 320	312 ~ 282
	0.45-4P	2159 ~ 3426	320 ~ 301	260 ~ 209
	0.55-4P	2387 ~ 3976	305 ~ 254	243 ~ 151
	0.18-6P	1642 ~ 2548	160 ~ 147	137 ~ 92
	0.25-6P	1905 ~ 3107	142 ~ 110	107 ~ 50
BF-I-No2.5	0.55-4P	1373 ~ 2577	449 ~ 470	433 ~ 427
	0.8-4P	2265 ~ 4302	455 ~ 502	415 ~ 380
	0.25-6P	1576 ~ 2770	220 ~ 250	200 ~ 198
BF-I-No2.8	1.1-4P	2463 ~ 4598	398 ~ 452	367 ~ 344
	1.5-4P	3504 ~ 5866	500 ~ 422	438 ~ 258
	0.37-6P	2363 ~ 3863	241 ~ 231	213 ~ 156
BF-I-No3.0	0.55-6P	2925 ~ 4450	270 ~ 194	226 ~ 127
	1.5-4P	3071 ~ 5520	682 ~ 750	642 ~ 649
	0.55-6P	2033 ~ 4225	298 ~ 336	285 ~ 274
BF-I-No3.15	1.8-4P	3041 ~ 5565	744 ~ 836	711 ~ 741
	2.2-4P	4343 ~ 6820	820 ~ 839	749 ~ 699
	0.8-6P	2875 ~ 5408	359 ~ 353	328 ~ 265
BF-I-No3.55	3.0-4P	4087 ~ 8165	952 ~ 979	915 ~ 847
	4.0-4P	7424 ~ 10913	976 ~ 938	852 ~ 703
	0.8-6P	2803 ~ 5620	407 ~ 451	388 ~ 407
	1.5-6P	4002 ~ 8633	459 ~ 418	418 ~ 271
	0.55-8P	3301 ~ 5646	257 ~ 248	230 ~ 185
BF-I-No4.0	1.5-6P	3080 ~ 6380	552 ~ 605	539 ~ 555
	1.8-6P	5088 ~ 7526	576 ~ 656	538 ~ 857
	2.2-6P	6842 ~ 9130	632 ~ 665	568 ~ 550
	1.1-8P	4812 ~ 6847	355 ~ 374	319 ~ 309
BF-I-No4.5	4.0-6P	8437 ~ 13617	805 ~ 868	744 ~ 708
	5.5-6P	11750 ~ 18520	841 ~ 869	722 ~ 539
	7.5-6P	13710 ~ 21500	867 ~ 881	705 ~ 483
	2.2-8P	9033 ~ 13350	462 ~ 502	410 ~ 309
BF-I-No5.0	6.0-6P	11441 ~ 20500	887 ~ 950	822 ~ 812
	7.5-6P	13845 ~ 23433	938 ~ 974	841 ~ 762
	4.0-8P	11883 ~ 18349	593 ~ 625	494 ~ 412





It is an ideal corollary product for central air-conditioner equipment of different specifications, heating and ventilator and other equipment. It has high versatility, high efficiency, low noise, large volume and other features. The air it transferred shall not contain any flammable, corrosive material with the temperature of air at -20°C to 60°C, dust and grain and the concentration shall not exceed 100mg/m<sup>3</sup>.

Series	Model(No.)	Power(W)	Voltage(V)	Volume(m <sup>3</sup> /h)	Pressure(Pa)	Static pressure (Pa)
220 DKT V fans Series	2.0A	0.22	220	1044 ~ 2314	207 ~ 177	192 ~ 106
				919 ~ 2036	160 ~ 137	149 ~ 82
				836 ~ 1851	133 ~ 113	123 ~ 68
		0.1	220	710 ~ 1573	96 ~ 98	89 ~ 49
				668 ~ 1481	85 ~ 72	79 ~ 43
	2.25A	0.25	220	627 ~ 1388	75 ~ 64	69 ~ 38
				1110 ~ 2393	119 ~ 99	110 ~ 57
				1045 ~ 2252	106 ~ 87	98 ~ 50
		0.55	220	914 ~ 1971	81 ~ 67	75 ~ 38
				1763 ~ 3800	300 ~ 249	278 ~ 143
	2.5A	0.37	220	1502 ~ 3237	218 ~ 180	201 ~ 104
				1306 ~ 2680	165 ~ 136	152 ~ 78
				1178 ~ 2680	159 ~ 163	148 ~ 107
		0.65	220	1109 ~ 2522	141 ~ 144	131 ~ 95
				1040 ~ 2365	124 ~ 127	116 ~ 83
			1377 ~ 3941	344 ~ 352	321 ~ 231	
			1594 ~ 3626	291 ~ 298	272 ~ 196	
			1386 ~ 3153	220 ~ 226	205 ~ 148	



I

Series	Model(No.)	Power(W)	Voltage(V)	Volume(m <sup>3</sup> /h)	Pressure(Pa)	Static pressure (Pa)
38 DKT OV fans Series	2.0A	0.18-4P	380	852 ~ 1532	227 ~ 208	271 ~ 176
		0.25-4P	380	1066 ~ 2348	251 ~ 245	213 ~ 182
		0.32-4P	380	1568 ~ 3010	266 ~ 245	219 ~ 145
	2.25A	0.12-6P	380	931 ~ 1759	110 ~ 102	92 ~ 60
		0.18-6P	380	1350 ~ 2501	114 ~ 91	94 ~ 40
		0.32-4P	380	1304 ~ 2090	327 ~ 320	312 ~ 282
		0.45-4P	380	2159 ~ 3426	320 ~ 301	260 ~ 209
		0.55-4P	380	2387 ~ 3976	305 ~ 254	243 ~ 151
	2.5A	0.18-6P	380	1642 ~ 2548	160 ~ 147	137 ~ 92
		0.25-6P	380	1905 ~ 3107	142 ~ 110	107 ~ 50
		0.55-4P	380	1373 ~ 2577	449 ~ 470	433 ~ 427
		0.8-4P	380	2265 ~ 4302	455 ~ 502	415 ~ 380
		0.25-6P	380	1576 ~ 2770	220 ~ 250	200 ~ 198
	2.8A	1.1-4P	380	2463 ~ 4598	398 ~ 452	367 ~ 344
		1.5-4P	380	3504 ~ 5866	500 ~ 422	438 ~ 258
		0.37-6P	380	2636 ~ 3863	241 ~ 231	213 ~ 156
		0.55-6P	380	2925 ~ 4450	270 ~ 194	226 ~ 127
		1.5-4P	380	3071 ~ 5520	682 ~ 750	642 ~ 649
	3.0A	0.55-6P	380	2033 ~ 4225	298 ~ 336	285 ~ 274
		1.8-4P	380	3041 ~ 5565	744 ~ 836	711 ~ 741
		2.2-4P	380	4343 ~ 6820	820 ~ 839	749 ~ 699
		0.8-6P	380	2875 ~ 5408	359 ~ 353	328 ~ 265
		3.0-4P	380	5673 ~ 10032	952 ~ 979	915 ~ 847
	3.55A	4.0-4P	380	7424 ~ 11299	976 ~ 938	852 ~ 703
		0.8-6P	380	2803 ~ 5620	407 ~ 451	388 ~ 407
		1.5-6P	380	4002 ~ 8633	459 ~ 418	418 ~ 271
		0.55-8P	380	3301 ~ 5646	257 ~ 248	230 ~ 185
		1.5-6P	380	3080 ~ 6380	552 ~ 605	539 ~ 555
	4.0A	1.8-6P	380	5008 ~ 7526	576 ~ 656	538 ~ 587
		2.2-6P	380	6842 ~ 9130	632 ~ 665	568 ~ 550
		1.1-8P	380	4812 ~ 6847	355 ~ 374	319 ~ 309
		4.0-6P	380	8437 ~ 13617	805 ~ 868	744 ~ 7087
		5.5-6P	380	11750 ~ 18520	841 ~ 869	72 ~ 539
	4.5A	7.5-6P	380	13710 ~ 21500	867 ~ 881	705 ~ 483
		2.2-8P	380	9033 ~ 13350	462 ~ 502	410 ~ 309
		6.0-6P	380	11441 ~ 20500	887 ~ 950	822 ~ 812
		7.5-6P	380	13845 ~ 23433	938 ~ 974	841 ~ 762
		4.0-8P	380	11883 ~ 18349	593 ~ 625	494 ~ 412



三#

# DG centrifugal fan

## DG series multi-wings centrifugal fan

DG Series Fan A/C type. Featured by high efficiency, large airflow, easy installation (0°, 90°, 180°, 270°). Use condition: 101.325Kpa, 20 °C, 1.2Kg/m³

Series	Model(No.)	Volume(m³/h)	Pressure(Pa)	Pressure(Pa)	Rotation(R/Min)	Noise dB(A)	Motor Power(KW)	Power(V)
DG series (A type) fan	DG2.5A	1597	467	394	1400	≤69	0.75	50Hz 220/380V
		2086	475	349				
		2312	454	300				
		2528	428	243				
		2738	406	190				
	DG3.0A	1832	724	681	1400	≤73	1.5	50Hz 220/380V
		2389	698	623				
		3046	679	560				
		3625	666	497				
		3961	654	450				
	DG3.2A	2644	751	703	1420	≤75	2.2	50Hz 380V
		3851	820	719				
		4413	823	689				
		4884	809	645				
	DG3.5A	5324	795	601	910	≤71	1.1	50Hz 380V
		2577	406	373				
		3801	404	331				
		4339	382	288				
		4785	359	244				
		5171	300	166				
		3173	948	911				
		4016	985	926				
		4891	997	909				
		5725	987	866				
		6533	960	802				
		3397	977	934				
		4841	1008	922				
	DG4.0A	5990	1003	871	1430	≤77	3	50Hz 380V
		6989	948	768				
		7870	861	633				
		2894	514	494				
		4248	600	557				
		5270	618	552				
		5858	629	547				
		6489	622	521				
		3885	1055	1019				
	DG4.5A	5604	1233	1158	1440	≤79	4	50Hz 380V
		6811	1246	1136				
		7930	1242	1092				
		9132	1211	1013				
5388		715	666					
DG5.0A	7336	787	695	960	≤72	2.2	50Hz 380V	
	8132	778	665					
	8989	766	629					
	10032	738	567					
DG5.6A	5719	897	851	970	≤77	4	50Hz 380V	
	8632	946	841					
	11008	926	756					
	12103	861	656					
	13400	678	426					
DG6.3A	7235	1064	1015	970	≤79	5.5	50Hz 380V	
	9876	1123	1032					
	12491	1156	1010					
	15146	1150	934					
DG6.3A	17320	1103	822	720	≤81	7.5	50Hz 380V	
	7214	803	769					
	12130	919	823					
	16798	924	739					
	19651	898	645					
21073	873	562						



Profile

Certificate

Facilities

Product

Summary

Projects

# DG centrifugal fan



## DG series multi-wings centrifugal fan

DG Series Fan A/C type. Featured by high efficiency, large airflow, easy installation (0°, 90°, 180°, 270°).

Use condition: 101.325Kpa, 20°C, 1.2Kg/m³

Series	Model(No.)	Rotation (R/Min)	Volume(m³/h)	Pressure(Pa)	Pressure (Pa)	Noise dB(A)	Motor	Series	Model(No.)	Rotation (R/Min)	Volume(m³/h)	Pressure(Pa)	Pressure (Pa)	Noise dB(A)	Motor
DG series (E type) fan	DG4.0E	960	2894	514	494	≤72	2.2kw-4	DG series (E type) fan	DG5.6E	800	5962	721	688	≤75	5.5kw-4
			4248	600	557						8140	763	701		
			5270	618	552						10295	785	685		
			5858	629	547						12476	781	635		
			6489	622	521						14270	745	554		
		1250	3372	795	768	7235	1064			1015	≤81	7.5kw-4			
			4864	928	872	9876	1123			1032					
			5912	938	855	12491	1156			1010					
			6883	935	822	15146	1150			934					
			7927	912	763	17320	1103			822					
		1440	3885	1055	1019	8204	1368			1305	≤84	11kw-4			
			5604	1233	1158	11199	1445			1327					
			6811	1246	1136	14172	1486			1297					
			7930	1242	1092	17175	1479			1202					
			9132	1211	1013	19640	1418			1056					
	DG4.5E	800	4440	486	453	7214	803	769	≤78	7.5kw-4					
			6045	535	473	12130	919	823							
			6702	530	454	16798	924	739							
			7407	521	428	19651	898	645							
			8265	502	386	21073	873	562							
		970	5388	715	666	8093	1034	992	≤83	11kw-4					
			7336	787	695	13501	1203	1084							
			8132	778	665	18616	1230	1004							
			8989	766	629	22030	1212	894							
			10032	738	567	23217	1180	778							
		1100	6107	920	855	9195	1294	1238	≤85	15kw-4					
			8319	1012	914	11923	1453	1360							
			9220	997	853	15049	1505	1356							
			10195	983	820	20913	1543	1257							
			11376	945	725	24599	1520	1124							
DG5.0E	800	4713	610	579	10741	656	606	≤81	11kw-4						
		7113	645	574	14558	712	621								
		9071	630	514	18150	723	581								
		9975	585	445	21798	673	468								
		11043	460	289	24975	595	326								
	970	5719	897	851	12523	920	852	≤85	15kw-4						
		8632	946	841	16924	968	846								
		11008	926	756	21165	983	792								
		12103	861	656	25410	916	638								
		13400	678	426	29124	809	443								
	1100	6480	1153	1094	13423	1058	980	≤87	18.5kw-4						
		9790	1216	1082	18142	1113	971								
		12485	1187	968	22683	1130	908								
		13720	1105	841	27242	1052	732								
		15191	870	546	31215	930	509								

Profile

Certificate

Facilities

Product

Summary

Projects

# Axial fan

## SF(G) SF(G) axial fan

SF(G) series are featured by low noise, large air volume, electricity saving, rational structure and etc, whose blades are designed and made according to 3 Flow Theory. Chosen as ideal devices by many departments such as chemical, light industry, civil construction and high-class hotels, the series are applied to prevent sunstroke and lower temperature for the mining industry and the workshop strage, or used for pipeline pressure, the air supply, ventilation and roof ventilation in eneral industey. Further more, according to user's needs, our company can also provide SF- I type for fixed status and SF-

Model(No.)	Power(W)	Voltage(V)	Rotation(R/Min)	Volume(m³/h)	Pressure(Pa)	Noise dB(A)
2G-2	0.18	220	2800	600 ~ 940	80 ~ 60	≤ 58
2.5G-2	0.25	220	2800	1200 ~ 1740	168 ~ 126	≤ 59
2.5G-4	0.18	220/380	1400	790 ~ 1460	45 ~ 24	≤ 60
3G-2	0.37	380	2800	2025 ~ 3552	208 ~ 144	≤ 79
3G-4	0.25	220/380	1400	1000 ~ 2000	73 ~ 42	≤ 63
3.5G-2	0.55	380	2800	3740 ~ 5029	271 ~ 175	≤ 85
3.5G-4	0.37	220/380	1400	2000 ~ 3000	100 ~ 57	≤ 70
4G-2	0.9	380	2800	5000 ~ 8000	352 ~ 131	≤ 88
4G-4	0.55	220/380	1400	2675 ~ 5000	150 ~ 98	≤ 71
5G-2	1.5	380	2800	7103 ~ 9552	347 ~ 158	≤ 89
	2.2	380	2800	5219 ~ 9552	452 ~ 158	≤ 89
5G-4	0.75	220/380	1400	3835 ~ 8001	236 ~ 106	≤ 75
	1.5	380	1400	3694 ~ 8001	248 ~ 152	≤ 75
5G-6	0.55	380	910	1722 ~ 5090	110 ~ 46	≤ 70
	0.37	380	910	2449 ~ 5090	97 ~ 46	≤ 70
5.6G-4	1.5	380	1400	7000 ~ 12700	284 ~ 199	≤ 80
6G-2	3	380	2900	12131 ~ 16000	570 ~ 294	≤ 96
	4	380	2900	8500 ~ 16000	789 ~ 294	≤ 96
6G-4	2.2	220/380	1420	8291 ~ 15640	322 ~ 208	≤ 81
6G-6	1.1	380	910	3000 ~ 10635	177 ~ 119	≤ 71
7G-4	3	380	1420	14000 ~ 22000	236 ~ 137	≤ 84
7G-6	1.5	380	960	7023 ~ 13068	165 ~ 95	≤ 75
7G-8	1.1	380	720	5529 ~ 9618	89 ~ 54	≤ 78
8G-4	4	380	1450	13000 ~ 25000	482 ~ 175	≤ 89
8G-6	2.2	380	960	5875 ~ 16319	283 ~ 75	≤ 79
9G-4	5.5	380	1450	24828 ~ 34759	373 ~ 255	≤ 90
9G-6	3	380	960	13738 ~ 28130	230 ~ 167	≤ 87
10G-6	4	380	960	13235 ~ 33862	300 ~ 196	≤ 84
12G-6	5.5	380	960	18476 ~ 37762	431 ~ 186	≤ 90



SF(G) Type



SF-I



SF-I



SF-II type

## SLG low noise axial fan

SLG series are the axial fans of the new generation, designed and product by our company after the research on drencher drawers and paint tables, whose performance indicators of volume, pressure and noise are at the leading level in our country, the product is good for environmental protection and energy saving, which has a good social and financial benefit.

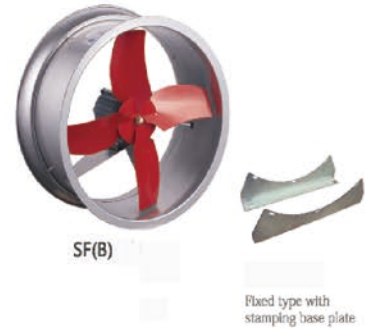
Model(No.)	Power(W)	Rotation(R/Min)	Volume(m³/h)	Pressure(Pa)	Noise dB(A)
4A	0.37	1400	2836 ~ 4036	110 ~ 96	≤ 74
5A	0.75	1400	5540 ~ 7889	172 ~ 135	≤ 80
6A	1.5	1400	9572 ~ 13630	249 ~ 195	≤ 86
7A	3	1420	15200 ~ 31642	388 ~ 266	≤ 91



### SF(B) SF(B) enjanced wall type fan

SF(G) series are featured by low noise,large air volume,electricity saving,rational structure and etc,whose blades are designed and made according to 3 Flow Theory.Chosen as ideal devices by many departments such as chemical,light industry,civil construction and high-class hotels,the series are applied to prevent sunstroke and lower temperature for the mining industry and the workshop strage,or used for pipeline pressure,the air supply, ventilation and roof ventilation in eneral industey. Further more,according to user's needs,our company can also provide SF- I type for fixed status and SF- II type for adjustable status.

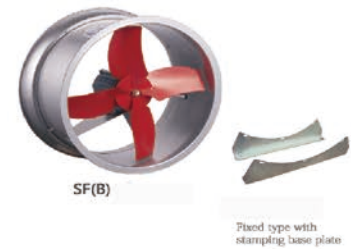
Model(No.)	Power(W)	Voltage(V)	Rotation(r/min)	Volume(m³/h)	Pressure(Pa)	Noise dB(A)
2B	0.06	220	1400	900	25	≤ 58
2.5B	0.09	220/380	1400	1300	26	≤ 59
3B	0.12	220/380	1400	1800	30	≤ 61
3.5B	0.18	220/380	1400	2880	48	≤ 63
4B	0.25	220/380	1400	4370	84	≤ 70
5B	0.18	380	910	3894	45	≤ 68
	0.37	220/380	1400	5760	88	≤ 73
5.6B	0.25	380	910	5470	50	≤ 71
	0.37	380	1400	8092	110	≤ 79
6B	0.55	220/380	1400	8520	120	≤ 80
	0.37	380	910	5760	65	≤ 73
7B	1.1	380	1400	14643	126	≤ 83
	0.75	380	910	9146	85	≤ 78



### EB energy-saving wall type fan

EB series adopt apcial twisted blade design and flange flanging casing,which makes the noise lower and the air volume larger.The series are featured by good performance,easy maintenance and used to transport air in workshop storage andplaces of recreation and other places.But these places shouldn't contain flammable,explosive and corrosive gases,with a temperature no higher than 50 C.

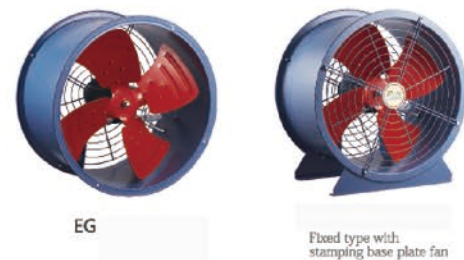
Model(No.)	Power(W)	Voltage(V)	Rotation(r/min)	Volume(m³/h)	Noise dB(A)	Pressure(Pa)
EB-2A	0.06	220/380	1400	865	≤ 57	25
EB-2.5A	0.075	220/380	1400	1105	≤ 58	32
EB-3A	0.09	220/380	1400	1530	≤ 60	40
EB-3.5A	0.15	220/380	1400	2448	≤ 63	56
EB-4A	0.205	220/380	1400	3751	≤ 70	70
EB-5A	0.3	220/380	1400	5140	≤ 72	75
EB-6A	0.46	220/380	1400	7502	≤ 78	116



### EG energy-saving duct fan

EG series are featured by low noise.Large air volume,electricity saving and rational structure and other features,and are choose as ideal devices by many departments such as chemical,light industry,civil construction and high-class hotels,applied to preventsunstroke and lower temperature for the mining industry and the workshopstorage,orused for pipeline pressure,the air supply,ventilation and roof ventilation in general industry.

Model(No.)	Power(W)	Rotation(R/Min)	Volume(m³/h)	Pressure(Pa)	Noise dB(A)
EG-2A-2	0.18	2800	690 ~ 940	80 ~ 60	≤ 57
EG-2.5A-4	0.18	1400	790 ~ 1460	45 ~ 24	≤ 58
EG-2.5A-2	0.25	2800	1200 ~ 1740	168 ~ 126	≤ 71
EG-3A-4	0.205	1400	980 ~ 1988	54 ~ 27	≤ 62
EG-3A-2	0.3	2800	2025 ~ 3552	208 ~ 144	≤ 73
EG-3.5A-4	0.3	1400	1989 ~ 2980	92 ~ 25	≤ 63
EG-3.5A-2	0.38	2800	3740 ~ 5029	271 ~ 175	≤ 80
EG-4A-4	0.46	1400	2675 ~ 4970	150 ~ 98	≤ 66
EG-4A-2	0.58	2800	5000 ~ 8000	352 ~ 131	≤ 83
EG-5A-4	0.66	1400	3238 ~ 6198	159 ~ 95	≤ 74
EG-5A-2	1.5	2800	7103 ~ 9552	347 ~ 158	≤ 85
	2.2	2800	5219 ~ 9552	452 ~ 158	≤ 86
EG-5.6A-4	1.1	1400	6990 ~ 10950	284 ~ 129	≤ 80
EG-6A-4	1.8	1420	11500 ~ 16780	288 ~ 171	≤ 82
EG-6A-6	0.9	910	4680 ~ 8990	160 ~ 92	≤ 72
EG-6A-2	3	2900	12131 ~ 16000	570 ~ 294	≤ 89
	4	2900	8500 ~ 16000	789 ~ 294	≤ 91



POG Series low noise axial fan

POG series are widely used to transport air in factories, workshops, warehouse and other relevant places for Petroleum refining and production, of various alcohols painting, spray drying, rubber production, food processing and medicine production. The series are featured by new design, excellent performance high pressure, efficient energy saving low noise, reverse ventilation and ect, and the fans can transport non-corrosive gases with the quantity of dust and soild impurities≤150mg/m³ and the temperature no higher than 50℃.

Model(No.)	Rotation(r/min)	Power(W)	Ajustable Blade angle	Volume(m³/h)	Pressure(Pa)
3.0A	2800	0.12	20°	2184 ~ 1811	114 ~ 157
	2800	0.25	25°	2647 ~ 2136	131 ~ 166
	2800	0.37	30°	2905 ~ 2290	165 ~ 205
	2800	0.37	35°	3148 ~ 2578	193 ~ 222
3.5A	2800	0.37	20°	3467 ~ 2876	155 ~ 213
	2800	0.55	25°	4204 ~ 3392	224 ~ 285
	2800	0.75	30°	4613 ~ 3637	274 ~ 329
	2800	0.75	35°	4998 ~ 4094	321 ~ 356
	1400	0.09	25°	2102 ~ 1696	72 ~ 100
	1400	0.09	30°	2307 ~ 1818	77 ~ 107
4A	1400	0.12	35°	2499 ~ 2047	80 ~ 112
	2800	1.1	20°	5013 ~ 4054	270 ~ 380
	2800	1.1	25°	6080 ~ 4960	285 ~ 398
	2800	1.5	30°	7600 ~ 6150	305 ~ 428
	2800	2.2	35°	9350 ~ 7800	320 ~ 450
	1400	0.12	20°	2500 ~ 2027	68 ~ 95
5A	1400	0.18	25°	3040 ~ 2480	72 ~ 100
	1400	0.18	30°	3800 ~ 3075	77 ~ 107
	1400	0.25	35°	4675 ~ 3900	80 ~ 112
	2800	1.5	15°	9708 ~ 8216	220 ~ 350
	2800	2.2	20°	11233 ~ 9317	284 ~ 390
	1400	0.37	25°	6809 ~ 5495	103 ~ 129
6A	1400	0.55	30°	7472 ~ 5891	126 ~ 152
	1400	0.55	35°	8096 ~ 6631	147 ~ 163
	1400	0.75	40°	9240 ~ 7557	160 ~ 181
	2900	3	15°	15284 ~ 13502	330 ~ 515
7A	2900	5.5	20°	20103 ~ 16675	489 ~ 674
	2900	7.5	25°	24374 ~ 19668	706 ~ 893
	1450	0.75	20°	10052 ~ 8338	122 ~ 168
	1450	1.1	25°	12187 ~ 9834	176 ~ 223
8A	1450	1.5	30°	13373 ~ 10543	216 ~ 259
	1450	2.2	35°	14489 ~ 11867	253 ~ 281
	1450	2.2	25°	17600 ~ 13300	229 ~ 260
	1450	2.2	30°	18800 ~ 14305	251 ~ 290
9A	1450	3	35°	21500 ~ 16145	297 ~ 370
	960	0.55	25°	11652 ~ 8810	100 ~ 115
	960	0.75	30°	12447 ~ 9470	111 ~ 133
	960	1.1	35°	14234 ~ 10689	130 ~ 165
10A	960	1.5	25°	17743 ~ 15095	160 ~ 185
	960	3	30°	19615 ~ 16377	190 ~ 210
	960	3	35°	21280 ~ 18083	226 ~ 255
	1450	5.5	20°	33924 ~ 28140	275 ~ 380
11.2A	1450	7.5	25°	41131 ~ 33189	397 ~ 500
	1450	11	30°	45133 ~ 35581	487 ~ 584
	1450	15	35°	48900 ~ 40052	569 ~ 632
	1450	15	40°	55810 ~ 45619	617 ~ 696
12A	960	1.5	20°	22460 ~ 18630	120 ~ 160
	960	2.2	25°	27231 ~ 21974	174 ~ 220
	960	3	30°	29881 ~ 23557	213 ~ 256
	960	5.5	35°	32375 ~ 26517	249 ~ 277
11.2A	960	5.5	40°	36950 ~ 30223	270 ~ 305
	1450	7.5	20°	46535 ~ 38600	339 ~ 468
	1450	11	25°	56421 ~ 45527	490 ~ 620
	1450	18.5	30°	61911 ~ 48808	601 ~ 721
10A	1450	22	35°	67079 ~ 54941	703 ~ 781
	960	3	20°	30809 ~ 25556	149 ~ 205
	960	4	25°	34354 ~ 30142	215 ~ 271
	960	5.5	30°	40988 ~ 32314	263 ~ 316
11.2A	960	7.5	35°	44411 ~ 36375	308 ~ 342
	960	7.5	40°	50686 ~ 41458	334 ~ 376
	960	5.5	20°	43285 ~ 35904	186 ~ 257
	960	7.5	25°	52480 ~ 42347	269 ~ 340
12A	960	11	30°	57587 ~ 45699	330 ~ 396
	960	11	35°	62394 ~ 51104	386 ~ 429
	960	15	40°	71211 ~ 58245	419 ~ 475
	960	7.5	20°	53238 ~ 44161	214 ~ 295
11.2A	960	11	25°	64549 ~ 52085	309 ~ 391
	960	15	30°	70829 ~ 55839	379 ~ 455
	960	18.5	35°	76742 ~ 62856	444 ~ 493
	960	22	40°	87586 ~ 71693	481 ~ 542





### T30 A/C (belt driven/motor directly driven type) Axial fan

T30A/C series are based on the type of 30K4- II and featured by rational structure, low noise, high efficiency, high blade strength and etc. The series consist of common type and open type, which are used for ventilation pipeline compression in industrial pipeline, to supply and exhaust high temperature gas and gases no with oil, water and dust. The gassed should be non-flammable, non-corrosive with the temperature no higher than 50 C.

Series	Model(No.)	Power(W)	Voltage(V)	Rotation(r/min)	Volume(m³/h)	Pressure(Pa)	Noise dB(A)
Motor directly driven type	3A	0.25	220/380	1400	1000 ~ 2000	52 ~ 26	≤62
	3.5A	0.37	220/380	1400	2000 ~ 3000	82 ~ 39	≤68
	4A	0.55	220/380	1400	2685 ~ 5000	173 ~ 118	≤74
	5A	0.75	220/380	1400	3238 ~ 6198	159 ~ 95	≤76
		1.5	380	1400	3694 ~ 7660	210 ~ 152	≤79
		0.37	380	910	1722 ~ 5090	86 ~ 73	≤73
	6A	2.2	220/380	1420	14000	173	≤84
		1.1	380	910	3000 ~ 9000	180 ~ 92	≤76
	7A	3	380	1420	14000 ~ 22000	263 ~ 137	≤87
		1.5	380	960	14000	120	≤80
		1.1	380	720	10575	100	≤78
	8A	4	380	1450	9000 ~ 25000	420 ~ 235	≤89
		2.2	380	960	5875 ~ 16319	278 ~ 100	≤84
	9A	5.5	380	1450	25000 ~ 35000	296 ~ 210	≤89
3		380	960	26000	248	≤88	
10A	4	380	960	29142	256	≤89	
12A	5.5	380	960	44731	260	≤91	



Series	Model(No.)	Power(W)	Voltage(V)	Rotation(r/min)	Volume(m³/h)	Pressure(Pa)	Noise dB(A)
Belt directly driven type	3C	0.37	380	1400	1750	30	≤67
	3.5C	0.55	380	1400	2500	40	≤68
	4C	0.75	380	1600	4148	90	≤74
		0.55	380	1400	3500	79	≤73
	5C	1.5	380	1600	8460	128	≤84
		1.1	380	1450	7667	100	≤80
		2.2	380	1800	9517	162	≤85
	6C	1.5	380	1200	11590	123	≤79
		2.2	380	1450	14000	179	≤84
		3	380	1600	15448	217	≤85
	7C	3	380	1450	19000	226	≤89
	8C	4	380	1450	24500	221	≤91
	9C	5.5	380	1450	31421	215	≤92
	10C	4	380	960	27755	134	≤87
12C	7.5	380	960	44731	260	≤93	



### GXF diagonal flow fan

Therefore, the product is especially suitable for pipeline installation of a small space, in places like the mining industry, hotels, museums, sports venues for pipeline pressure, the air supply and exhaust, it also used for ventilation in general buildings and tall buildings with the gas temperature between -20°C to 50°C and the quantity of dust and solid impurities ≤ 100mg/m³.

Model(No.)	Power(W)	Rotation(r/min)	Volume(m³/h)	Pressure(Pa)	Noise dB(A)
3.0F	0.25	1400	864 ~ 2592	179 ~ 125	≤64
3.5S	0.18	910	908 ~ 2725	107 ~ 75	≤59
3.5F	0.37	1400	1372 ~ 4116	243 ~ 170	≤67
4.0S	0.25	910	1356 ~ 4068	139 ~ 97	≤67
4.0F	0.75	1400	2048 ~ 5163	318 ~ 222	≤76
4.5S	0.37	910	1931 ~ 4862	177 ~ 131	≤68
4.5F	1.1	1400	2916 ~ 5832	403 ~ 307	≤77
5.0S	0.75	910	2648 ~ 6676	218 ~ 152	≤71
5.0F	2.2	1420	4000 ~ 10084	498 ~ 347	≤80
6.0S	1.5	960	4576 ~ 11441	312 ~ 233	≤75
6.0F	5.5	1450	6912 ~ 17425	717 ~ 500	≤84
7.0S	3	960	7266 ~ 18168	427 ~ 318	≤77
8.0S	7.5	960	10846 ~ 21697	558 ~ 427	≤81



# Axial fan

## T35 type axial fan

It is the substitute product of 30K-4 type axial fan. BT35 is used for ventilation in places that contain flammable, explosive and corrosive gases; And T35 is used for ventilation and cooling in factories, offices, houses and etc, it is also series installed in longer pipeline to raise the air pressure in pipeline. The air transferred shall not be corrosive with notable dust, the temperature of the air shall not exceed 50°C.

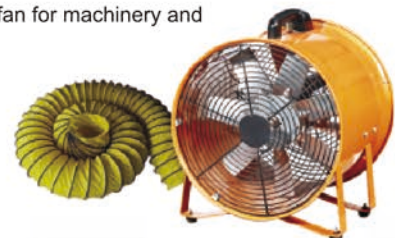
Model(No.)	Power(W)	Rotation(R/Min)	Volume(m³/h)	Pressure(Pa)	Leaf an angle	Noise dB(A)
2.8A	0.37	2800	2778	186	35°	≤75
	0.18	2800	2560	143	25°	≤72
3.15A	0.55	2800	4155	247	35°	≤79
	0.37	2800	3418	189	25°	≤76
	0.12	1400	2078	62	35°	≤64
	0.18	1400	2415	51	25°	≤63
3.55A	0.37	2800	2783	216	25°	≤80
	0.75	2800	5380	280	30°	≤82
	1.1	2800	5951	314	35°	≤83
	0.18	1400	2981	78	35°	≤68
	0.25	1400	3457	65	30°	≤67
4A	1.5	2800	7685	345	30°	≤85
	1.1	2800	6999	305	25°	≤83
	0.25	1400	4261	100	35°	≤73
	0.37	1400	4945	83	35°	≤71
4.5A	0.37	1400	6067	126	25°	≤75
	0.55	1400	6455	108	35°	≤74
5A	0.55	1400	7907	146	30°	≤78
	0.75	1400	8712	165	35°	≤79
	0.37	910	5768	72	35°	≤70
5.6A	0.75	1400	10168	163	25°	≤80
	1.1	1400	12239	206	35°	≤82
	0.37	910	8103	90	35°	≤73
6.3A	2.2	1420	17426	261	35°	≤86
	0.75	910	10472	101	30°	≤76
7.1A	2.2	1420	16501	251	20°	≤85
	1.1	910	16514	145	35°	≤81
7.5A	3	1420	19450	280	20°	≤87
8A	5.5	1450	29644	332	25°	≤90
	7.5	1450	35682	420	35°	≤93
	2.2	960	23624	184	35°	≤84
9A	3	960	30532	206	30°	≤86
	4	960	33937	233	35°	≤88
10A	4	960	38333	227	25°	≤88
	7.5	960	46141	288	35°	≤91
11.2A	7.5	960	53855	285	25°	≤92
	11	960	64825	361	35°	≤86



## SHT Series Portable Fan for Exhaust or Blowing

The series can be use for exhaust or blowing inside container and tunnel. It is a professional fan for machinery and engineering. Antexplosion and different voltahes are alternative for this fan.

Model(No.)	Power(W)	Voltage(V)	Rotation(r/min)	Volume(m³/h)	Pressure(Pa)
SHT2.5A	0.25	220	2800	1492 ~ 1822	154 ~ 134
SHT3.0A	0.37	220	2800	2578 ~ 3148	222 ~ 192
SHT3.5A	0.55	220	2800	3392 ~ 4202	285 ~ 224
SHT4.0A	0.9	220	2800	4054 ~ 5013	380 ~ 270



Telescopic duct

Portable Fan

## GF4-72 glass fiber centrifugal fan

Using the Polyester glass fiber material, this product is featured by high intensity, light weight, uneasy aging, low noise and etc. The product is an ideal anti-corrosion fan, suitable for exhaustion of corrosive gases. It is also used for ventilation in industrial buildings.

Series	Model(No.)	Power(W)	Rotation(R/Min)	Volume(m <sup>3</sup> /h)	Pressure (Pa)
motor directly driven type	3A	0.75	1450	500~2250	100~450
		1.5	2900	1000~3420	400~1800
	4A	1.5	1450	2500~4050	300~500
		3	2900	5000~8100	1200~2000
	5A	2.2	1450	4500~7200	320~600
		7.5	2900	9000~14400	1280~2400
	6A	4	1450	7000~13500	450~1000
	7A	7.5	1450	8500~17500	600~1200
		11	1450	11000~23000	800~1600



A 式风机  
Motor directly driven type

Series	Model(No.)	Power(W)	Rotation(R/Min)	Volume(m <sup>3</sup> /h)	Pressure (Pa)
belt driven type	3C	0.75	1450	500~1250	400~450
		1.5	2900	1000~2500	400~1800
	4C	1.5	1450	2500~4500	300~500
		3	2900	5000~9000	1200~2000
	5C	2.2	1450	4500~8000	320~600
		7.5	2900	9000~16000	1280~2400
	6C	3	1250	5700~11000	400~900
		4	1450	7000~14000	450~1000
		5.5	1600	7500~14500	650~1300
		7.5	1800	8200~15800	1000~1700
	7C	11	2000	9000~18000	1300~2100
		5.5	1120	8000~16000	580~950
		7.5	1250	8500~18000	700~1200
	8C	15	1600	11000~22000	1200~1900
		5.5	1000	11000~18000	700~960
		7.5	1120	12000~20500	880~1200
		11	1250	13600~22800	1100~1500
		15	1450	15800~256500	1500~2000
	10C	22	1600	17000~29000	2300~2400
		30	1120	31000~39000	1900~1500
		18.5	1000	28000~35000	1500~1200
	12C	15	900	25000~31000	1200~1000
		55	1000	48000~61000	2100~1700
		37	900	43000~55000	1800~1400
30		800	38000~49000	1400~1100	
18.5		710	34000~44000	1100~800	
15		630	30000~39000	900~650	



C 式风机  
belt driven type

# Glass fiber fan

## FDT Low noise centrifugal fan (Cabinet type)

Using the Polyester glass fiber material, this product is featured by high intensity, light weight, Uneasy aging,loe noise and ect. The product is an ideal anti-corrosion fan, suitable for exhaustion of corrosive gases. It is also used for ventilation in industrial buildings.It is suitable for ventilation of large factory, warehouse,workshop, laboratory, school etc.The air transferred shall not contain excessivoad adhesive material, dust and grain and the concentration shall not exceed150mg/m³, with the temperature between- 20℃ and 60℃.

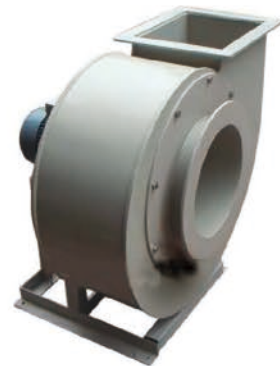
Model(No.)	Power(W)	Rotation(r/min)	Volume(m³/h)	Pressure(Pa)
9	0.55	800	1590 ~ 2408	141 ~ 86
	0.75	900	1790 ~ 2709	178 ~ 110
	1.1	1200	2386 ~ 3612	317 ~ 195
	1.5	1400	2784 ~ 4214	432 ~ 266
10	1.75	800	2238 ~ 3384	177 ~ 108
	1.1	900	2514 ~ 3804	224 ~ 138
	1.5	1200	3352 ~ 5076	398 ~ 245
	2.2	1400	3911 ~ 5922	542 ~ 334
12	1.1	800	3771 ~ 5709	251 ~ 154
	1.5	900	4243 ~ 6423	318 ~ 196
	2.2	1200	5657 ~ 8564	565 ~ 348
	3	1400	6600 ~ 99921	769 ~ 474
15	1.5	600	4607 ~ 6974	196 ~ 121
	2.2	720	5528 ~ 8359	282 ~ 174
	3	850	6526 ~ 9879	393 ~ 242
	4	900	6910 ~ 10460	441 ~ 272
18	2.2	600	7733~11706	284~176
	3	720	9279~14047	408~253
	4	800	10310~48607	504~312
	5.5	830	110697~16193	543~336
20	3	560	9196~13922	290~200
	4	610	10017~15165	345~237
	5.5	720	11824~17900	480~330
	7.5	800	13137~19888	539~407
22	4	600	14026~21231	442~273
	5.5	650	15195~23000	495~320
	7.5	720	16831~55477	607~393
	11	800	18701~28308	750~485
25	5.5	520	16896~25574	373~219
	7.5	580	18845~28525	464~272
	11	650	21120~31968	583~342
	15	720	23394~35410	715~419
28	7.5	500	21224 ~ 32126	422 ~ 262
	11	560	23771 ~ 35982	529 ~ 328
	15	600	25469 ~ 38552	608 ~ 377
	18.5	650	27591 ~ 41764	713 ~ 442
30	22	720	30562 ~ 46262	875 ~ 542
	11	520	27958 ~ 42319	551 ~ 341
	15	560	30108 ~ 45575	639 ~ 395
	18.5	580	31183 ~ 48207	685 ~ 424
33	22	610	32769 ~ 49644	758 ~ 469
	30	650	34947 ~ 52899	860 ~ 532
	11	400	27840 ~ 41220	424 ~ 290
	15	450	31320 ~ 46377	545 ~ 367
36	18.5	500	34800 ~ 51534	680 ~ 453
	22	550	38280 ~ 56682	822 ~ 548
	30	600	41760 ~ 61830	970 ~ 652
	37	630	43850 ~ 64926	1080 ~ 719
36	15	350	31490 ~ 46629	396 ~ 264
	18.5	400	35990 ~ 53289	518 ~ 344
	22	450	40490 ~ 59949	654 ~ 436
	30	500	44990 ~ 66609	808 ~ 538
36	37	550	49490 ~ 73278	970 ~ 651
	45	580	51280 ~ 77269	1086 ~ 723



## PVC4-72 FGXF series of plastic centrifugal fan

This product is suitable for delivering corrosive gases containing acid,alkali,and salt,and is also used for ventilation of industrial buildings.But the fan is not allowed to remove corrosive gases containing aromaticcompounds,halogen derivatives of aliphatic and aromatic hydrocarbons,ketones,etc. Without any heat source nearby,the fan shall not be exposed to the sun,the temperature shall be between -0℃ and 50℃.

Model(No.)	Power(W)	Rotation(r/min)	Volume(m³/h)	Pressure(Pa)
2.8	0.75	1400	565 ~ 1060	288 ~ 126
3.2	0.75	1450	844 ~ 1582	324 ~ 198
3.6	1.1	1450	2006 ~ 3338	393 ~ 247
4	1.1	1450	2006 ~ 3338	501 ~ 329
4.5	1.5	1450	2856 ~ 4752	634 ~ 416
5	2.2	1450	3864 ~ 6955	790 ~ 502
6	4	1450	6677 ~ 12017	1139 ~ 724
	1.5	960	4420 ~ 7956	498 ~ 371
7	7.5	1450	10602 ~ 19083	1550 ~ 984
	3	960	7312 ~ 13161	736 ~ 468



## FT35 Glass fiber reinforced plastic axial flow ventilator

Featured by high efficiency, anti-corrosion, static pressure, low noise stable working and etc, the fan is mainly used for the ventilation of workshop and warehouse and other places like chemical factories, laboratory and basement full of corrosive gases, can transport various flammable, explosive and corrosive gases. Dust and grain and concentration shall not exceed 150mg/m<sup>3</sup>. with the temperature between -20℃ and 60℃

Model(No.)	Power(W)	Rotation(R/Min)	Volume(m <sup>3</sup> /h)	Pressure (Pa)
2.8A	0.25	2900	2500	186
	0.09	1450	1252	47
3.15A	0.55	2900	3739	247
	0.37	2900	3076	189
	0.12	1450	1870	62
	0.18	1450	2173	51
3.55A	0.75	2900	4842	280
	1.1	2900	5356	314
	0.18	1450	2682	78
	0.25	1450	3111	65
4A	1.5	2900	6916	354
	1.1	2900	6299	305
	0.25	1450	3834	100
	0.37	1450	4450	83
4.5A	0.37	1450	5460	126
	0.55	1450	5809	108
5A	0.55	1450	7116	146
	0.75	1450	7840	165
	0.37	690	5191	72
5.6A	0.75	1450	9151	163
	1.1	1450	11015	206
	0.37	960	7292	90
6.3A	2.2	1450	15683	261
	0.75	960	9425	101
7.1A	2.2	1450	14850	251
	1.1	960	14862	145
8A	5.5	1450	26679	332
	7.5	1450	32113	420
	2.2	960	21262	184
9A	3	960	27478	206
	4	960	30543	233
10A	4	960	34499	227
	7.5	960	41526	288
11.2A	7.5	960	48469	285
	11	960	58342	361



## BJT Glass fiber reinforced plastic acid mist purification tower

Featured by high intensity, light weight, low noise and ect, the product is an ideal anti-corrosion fan for purification of corrosive gases containing acid, alkali, and salt, which is suitable to use in lab, chemical, textile, electroplating factories and other places.

型号	设计风量 (m <sup>3</sup> /h)	配用F4-72玻璃钢离心风机				配用耐酸水泵			酸雾初试浓度	净化效率	中和液NaOH溶液浓度	净化塔阻力 (Pa)
		机号	转速 (m <sup>3</sup> /h)	全压 (Pa)	功率 (kw)	型号	流量 (m <sup>3</sup> /h)	功率 (kw)				
650	1500	3.6A	1332 ~ 2634	390 ~ 290	1.1	32FS-6.3-8	6.3	1.1	HCL < 1000mg/m <sup>3</sup> H2SO4 < 1000mg/m <sup>3</sup> Nh3 < 100mg/m <sup>3</sup> HCN < 300mg/m <sup>3</sup> CrO3 < 500mg/m <sup>3</sup>	HCL 95 ~ 99% H2SO4 92 ~ 98% Nh3 95% HCN 90 ~ 95% CrO3 92 ~ 98%	2 ~ 6%	400
800	3000	4.5A	2712 ~ 5084	670 ~ 390	1.1	32FS-12.5-20	12.5	1.5				
1000	5000	5A	4096 ~ 6952	820 ~ 490	2.2	32FS-15-15	15	2.2				
1200	8000	6A	6291 ~ 14124	1230 ~ 710	4	50FS-25-18	25	4				
1400	10000	6C	8288 ~ 16575	1760 ~ 1116	5.5	50FS-30-15	30	4				
1650	15000	8C	12224 ~ 16705	1209 ~ 1166	7.5	65FS-35-15	35	5.5				
2000	20000	10C	22312 ~ 31230	967 ~ 766	11	80FS-60-15	60	11				
2400	24000	10C	25100 ~ 34000	1180 ~ 890	15	100FS-80-15	80	11				
3000	30000	12C	28170 ~ 37000	600 ~ 540	18.5	100FS-100-18	100	15				
3500	35000	12C	34218 ~ 47800	1090 ~ 850	30	100FS-120-15	100	15				

## Glass fiber fan

### FT30C Glass fiber axial fan

FT30C is a new kind of fan improved on the base of 30K- II .Featured by high efficiency,anti-corrosion,high intensity,low oise and etc,the fan is mainly used to expel air with high humidity,and used for ventilation and duct augment pressure.

Model(No.)	Power(W)	Rotation(r/min)	Volume(m <sup>3</sup> /h)	Pressure(Pa)
3.5C	0.55	1450	2250	40
4C	0.75	1600	3600	86
	0.55	1450	3150	66
5C	1.5	1600	7614	100
	1.1	1450	6900	82
6C	1.5	1450	10413	123
	2.2	1600	12600	179
7C	3	1450	17100	226
8C	4	1450	22050	221
9C	5.5	1450	28278	215
10C	4	960	24979	134



### DWT series glass fiber roof axial fan

It is suitable for ventilation of garage , warehouse , workshop , gymnasium and cinema it has low noise , stable working easy maintenance good antiseptis function and a lower pressure than DWT- II type . The air transferred shall not contain excessive adhesive material dust and gain and the concentration shall not exceed 150mg/m<sup>3</sup> , with the temperature between -20°C and 60°C

Model(No.)	Power(W)	Rotation(R/Min)	Volume(m <sup>3</sup> /h)	Pressure (Pa)
3	0.37	2800	3300 ~ 2340	181 ~ 232
	0.18	1400	1900 ~ 1908	90 ~ 110
3.5	0.75	2800	1450 ~ 4788	150 ~ 230
	0.37	1400	3320 ~ 2565	100 ~ 150
4	1.1	2800	7450 ~ 4770	193 ~ 250
	0.55	1400	5700 ~ 4122	176 ~ 190
4.5	0.37	1400	6067 ~ 4968	110 ~ 130
	0.55	1400	6320 ~ 5220	125 ~ 140
5	0.55	1400	8000 ~ 5040	135 ~ 191
	0.37	910	7000 ~ 5760	113 ~ 131
6	1.5	1400	15000 ~ 17000	232 ~ 267
	1.1	940	11000 ~ 8190	168 ~ 193
	0.55	710	8500 ~ 6840	111 ~ 136
7	1.1	960	17500 ~ 11250	165 ~ 212
	0.75	710	12000 ~ 8280	141 ~ 177
8	2.2	960	27000 ~ 20700	175 ~ 228
	1.5	710	20000 ~ 14400	129 ~ 167
9	4	960	34500 ~ 21600	256 ~ 202
	2.2	710	32000 ~ 21600	126 ~ 177
10	5.5	960	50000 ~ 31500	251 ~ 317
	3	720	46000 ~ 31500	141 ~ 183
11.2	7.5	960	41000 ~ 48470	215 ~ 285



### DWT-I Steel Roof Axial Fan

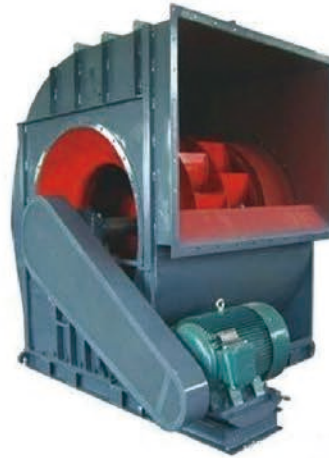
Steel base and body.False ogive made by fiber glass  
Suitable for ventilation in hotel,theater,office,lab,factory,residence and so on  
Models: 3#, 3.5#, 4#, 5#, 6#, 7# and 8# in all 7 models  
Air volume: 1600- 28000 m<sup>3</sup>/h



## 4-2x79 Series double inlets centrifugal fan

This product is use for indoor ventilation in factories, air-condition unit,all and large buildings, which can not only supply but also discharged gases. The transporting medium is air or other nonspontaneous - combustion and nonexplosive - combustion air with no harm to human. The air transferred shall not contain any adhesive material, dust and grain and the concentration shall not exceed 150 mg/m<sup>3</sup>, with the temperatureno higher than 80°C

Model(No.)	Power(W)	Rotation(r/min)	Volume(m <sup>3</sup> /h)	Pressure(Pa)
5E	2.2	1200	6380 ~ 11640	618 ~ 412
	4	1350	7980 ~ 13340	774 ~ 480
	5.5	1550	9620 ~ 15320	1010 ~ 647
	7.5	1800	9850 ~ 17160	1382 ~ 941
	11	2000	13600 ~ 18820	1607 ~ 1206
6E	5.5	1200	10990 ~ 20070	882 ~ 588
	11	1400	12890 ~ 23490	1215 ~ 814
	11	1500	13660 ~ 24550	1392 ~ 990
	15	1650	15190 ~ 27000	1676 ~ 1186
	18.5	1800	16760 ~ 29820	1990 ~ 1362
7E	7.5	900	14000 ~ 27180	627 ~ 473
	11	1000	15570 ~ 30240	774 ~ 461
	11	1120	17370 ~ 33840	970 ~ 549
	15	1250	19470 ~ 37710	1206 ~ 716
	30	1600	24930 ~ 48330	1970 ~ 1166
8E	11	900	19360 ~ 37600	785 ~ 471
	15	1000	21520 ~ 41680	971 ~ 579
	22	1120	24080 ~ 46720	1226 ~ 697
	30	1270	23760 ~ 52960	1570 ~ 932
	11	740	22664 ~ 44019	671 ~ 403
9E	15	800	24502 ~ 47588	784 ~ 471
	18.5	910	27871 ~ 54131	1015 ~ 609
	30	1060	32465 ~ 63054	1377 ~ 826
	37	1150	35222 ~ 68407	1621 ~ 973
	11	580	34320 ~ 56600	520 ~ 353
10E	15	660	39000 ~ 64400	667 ~ 461
	18.5	740	43800 ~ 72200	843 ~ 579
	30	830	49100 ~ 81000	1059 ~ 726
	37	940	55700 ~ 91800	1363 ~ 932
	15	520	53300 ~ 87800	603 ~ 402
12E	22	580	59400 ~ 97800	755 ~ 510
	37	680	69700 ~ 114800	1040 ~ 696
	55	740	75800 ~ 124800	1216 ~ 824
	18.5	420	68100 ~ 112400	530 ~ 363
	30	520	84400 ~ 139000	814 ~ 549
14E	75	660	110600 ~ 181800	1402 ~ 951
	90	740	120200 ~ 117800	1657 ~ 1128
	30	370	89600 ~ 148400	539 ~ 373
	55	470	113800 ~ 188000	873 ~ 520
	90	580	140600 ~ 231800	1334 ~ 902
16E	132	660	160200 ~ 263800	1762 ~ 1177
	37	360	124200 ~ 205000	647 ~ 431
	75	420	145000 ~ 239000	883 ~ 598
	132	520	179800 ~ 296200	1363 ~ 932
	160	580	200400 ~ 330200	1687 ~ 1147
18E	55	330	156600 ~ 257200	677 ~ 461
	90	420	199200 ~ 327400	1098 ~ 745
	132	470	222000 ~ 367000	1373 ~ 932
	200	520	246800 ~ 406000	1677 ~ 1138



## CF Multi-wings centrifugal fan

CF (A) series adopt the centrifugal structure. Featured by electricity-saving ,arge volume ,low noise and long service life , the series are suitable for ventilation and air - extraction in places like hotels and restaurants kitchens,mineral factory and the public.

Model(No.)	Power(W)	Voltage(V)	Rotation(r/min)	Volume(m <sup>3</sup> /h)	Pressure(Pa)	Noise(A)
1.5A	0.37	220/380	2800	830 ~ 1080	790 ~ 748	≤72
2A	1.1	220/380	2800	1248 ~ 2258	1150 ~ 839	≤78
	0.37	220/380	1400	650 ~ 1125	248 ~ 210	≤62
2.5A	2.2	220/380	2800	748 ~ 2617	1542 ~ 1296	≤83
	0.75	220/380	1400	1400 ~ 2300	377 ~ 320	≤65
	0.55	220/380	1400	1500 ~ 2200	367 ~ 312	≤65
3A	1.5	220/380	1400	2033 ~ 3500	800 ~ 715	≤70
	1.1	220/380	1400	1960 ~ 3300	810 ~ 750	≤69
	0.75	380	910	1300 ~ 2252	350 ~ 315	≤65
3.5A	3	220/380	1420	3233 ~ 5000	1050 ~ 800	≤73
	2.2	220/380	1420	3000 ~ 4800	1032 ~ 900	≤70
	1.1	380	910	2300 ~ 3150	460 ~ 385	≤62
4A	4	380	1450	4000 ~ 6500	1300 ~ 980	≤80
	1.1	380	910	2500 ~ 4200	600 ~ 520	≤72
4.5A	3	380	960	4500 ~ 6500	764630	≤72



## 4-72 centrifugal fan

### PTR/PTR(B) roots blower roots vacuum pump

PTR three-blade roots blower is widely used for pneumatic conveying system, in many kinds of industries such as porcelain, building materials, paper making, smelting, power, petroleum, chemical, textiles, aquaculture, sewage treatment, food, etc. But it doesn't apply to transport the gases that are flammable, explosive, toxic and strong corrosive. The product is featured by high accuracy, good performance, reliable operation, long service life, simple structure and easy maintenance. The whole blower including the accessories is standardized, which allows mass production. It needs water coolant within 80Kpa boost pressure.

The PTR1 design is a common type, the PTR2 design is an intensive type. All can match a vertical type or a horizontal type of silencer, or match a noise insulator to attain the best result of lowering the noise.

Model(No.)	Power(W)	Rotation(r/min)	Volume(m³/h)	Pressure Rise(kPa)
PTR-50	1.1 ~ 7.5	800 ~ 1720	0.64 ~ 3.95	9.8 ~ 73.5
PTR-80	2.2 ~ 15	970 ~ 1950	1.90 ~ 8.02	9.8 ~ 73.5
PTR-100	3 ~ 15	1070 ~ 1950	3.13 ~ 8.87	9.8 ~ 73.5
PTR-125	4 ~ 30	980 ~ 1850	5.37 ~ 12.05	9.8 ~ 73.5
PTR-150	7.5 ~ 55	810 ~ 1730	10.39 ~ 26.77	9.8 ~ 73.5
PTR-150A	15 ~ 90	980 ~ 1480	19.07 ~ 41.75	9.8 ~ 98.0
PTR-200	18.5 ~ 110	810 ~ 1480	26.64 ~ 58.46	9.8 ~ 73.5
PTR-200A	11 ~ 110	730 ~ 1390	30.69 ~ 73.43	9.8 ~ 73.5
PTR-250	15 ~ 132	810 ~ 1480	43.4 ~ 93.45	9.8 ~ 58.8
PTR-300	37 ~ 200	970 ~ 1450	63.57 ~ 118.8	9.8 ~ 73.5



PTR1  
(Vertical silencer)



PTR2  
Intensive type



PTR  
D type

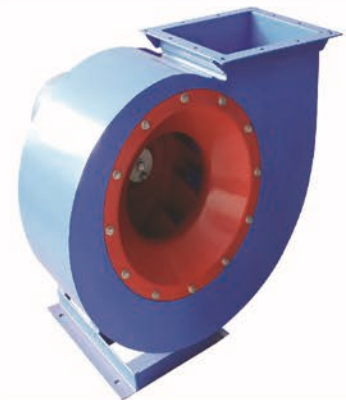


PTR(B)  
roots vacuum pump

## 4-72 centrifugal fan

Featured by high efficiency, low noise, wide use and steady pressure curve, 4-72 type is an ideal equipment for gas recycling, indoor ventilation & cooling mining enterprises, coliseum opera house, basement, large and small hotels, restaurants, shopping malls and major building. The transporting medium is air or other non-spontaneous-combustion and non-explosive combustion air with no harm to humans. With an anti-explode motor, B4-72 can use for ventilation of volatile flammable gases. The air transferred shall not contain any adhesive material, dust and grain and the concentration shall not exceed 150mg/m³, the temperature no higher than 80°C.

Model(No.)	Power(W)	Rotation(r/min)	Volume(m³/h)	Pressure(Pa)
2.5A	0.75	2800	1223 ~ 1981	855 ~ 482
2.8A	1.5	2800	1131 ~ 2356	994 ~ 606
3.2A	2.2	2800	1688 ~ 3517	1300 ~ 792
	1.1	1400	844 ~ 1758	324 ~ 198
3.6A	3	2900	2664 ~ 5268	1578 ~ 989
	1.1	1400	1332 ~ 2634	393 ~ 247
4A	5.5	2900	4012 ~ 7419	2014 ~ 1320
	1.1	1400	2006 ~ 3700	501 ~ 329
4.5A	7.5	2900	5712 ~ 10562	2554 ~ 1673
	1.1	1400	2856 ~ 5281	634 ~ 416
5A	15	2930	7728 ~ 15455	3187 ~ 2019
	2.2	1420	3864 ~ 7728	790 ~ 502
5.6A	22	2930	10122 ~ 25736	4152 ~ 2330
	3	1420	5009 ~ 12736	1017 ~ 570
6A	4	1450	6677 ~ 13353	1139 ~ 724
	1.5	960	4420 ~ 8841	498 ~ 317
7A	11	1450	10602 ~ 21204	1550 ~ 984



Model(No.)	Power(W)	Rotation(r/min)	Volume(m³/h)	Pressure(Pa)
16B	132	900	102810 ~ 111930	3157 ~ 3115
	160	900	121040 ~ 143910	2990 ~ 2497
	110	800	91392 ~ 127920	2489 ~ 1969
	75	710	81110 ~ 113520	1957 ~ 1549
	55	630	71971 ~ 100730	1538 ~ 1218
	37	560	63974 ~ 89544	1214 ~ 961
	30	500	57120 ~ 79950	967 ~ 766
	18.5	450	51408 ~ 71955	783 ~ 620
	15	400	45696 ~ 63960	618 ~ 490
	11	355	40555 ~ 56764	487 ~ 386
20B	7.5	315	35985 ~ 50368	383 ~ 303
	200	710	158410 ~ 221730	3069 ~ 2427
	132	630	140560 ~ 165480	2411 ~ 2284
	160	630	176150 ~ 196750	2172 ~ 1908
	90	560	124950 ~ 147100	1902 ~ 1801
	110	560	156580 ~ 174890	1714 ~ 1501
	75	500	111560 ~ 156150	1514 ~ 1199
	55	450	100400 ~ 140530	1225 ~ 970
	37	400	89250 ~ 124920	967 ~ 766
	30	355	79209 ~ 110860	761 ~ 603
20B	22	315	70284 ~ 98376	599 ~ 475
	15	280	62475 ~ 87445	473 ~ 375
	11	250	55781 ~ 78076	377 ~ 299





This series are use for coercive ventilation in industries such as Ancient furnace, glass, electroplating, ceramics, etc, and are widely used for material transportation in processing industries like food, feed and slag. The transporting medium is air or other non-spontaneous-combustion and non-explosive-combustion air with no harm to human. The air transferred shall not contain any adhesive material, dust and grain and the concentration shall not exceed 150mg/m<sup>3</sup>, with the temperature no higher than 80 °C.

Model(No.)	Power(W)	Rotation(R/Min)	Volume(m <sup>3</sup> /h)	Pressure(Pa)
3.5A	1.5	2800	552 ~ 847	2745 ~ 2744
4A	2.5	2800	824 ~ 1264	3584 ~ 3597
	3	2900	1410 ~ 1704	3507 ~ 3253
4.5A	4	2900	1174 ~ 2062	4603 ~ 4447
	5.5	2900	2281 ~ 2504	4297 ~ 4112
5A	7.5	2900	1610 ~ 2844	5697 ~ 5517
	11	2930	3166 ~ 3488	5323 ~ 5080
5.6A	11	2930	2262 ~ 3619	7182 ~ 7109
	18.5	2930	3996 ~ 4901	6954 ~ 6400
6.3A	18.5	2930	3220 ~ 5153	9149 ~ 9055
	30	2950	5690 ~ 6978	8857 ~ 8148
7.1D	37	2950	4610 ~ 7376	11717 ~ 11596
	55	2970	8144 ~ 9988	11340 ~ 10426
8D	75	2970	6594 ~ 11649	15034 ~ 14546
	110	2980	12968 ~ 14287	14021 ~ 13362
	7.5	1450	3297 ~ 4616	3620 ~ 3647
9D	15	1450	5275 ~ 7144	3584 ~ 3231
	15	1450	4695 ~ 7511	4597 ~ 4551
9D	22	1450	8294 ~ 10171	4453 ~ 4101
	30	1470	6440 ~ 12450	5840 ~ 5495
10D	37	1480	13952 ~ 15455	5244 ~ 4958
	45	1480	9047 ~ 15380	7364 ~ 7236
11.2D	75	1480	17491 ~ 21713	6927 ~ 6246
	15	970	5990 ~ 11580	3182 ~ 2996
	22	970	12978 ~ 14375	2860 ~ 2705
12.5D	75	1480	12577 ~ 18447	9229 ~ 9310
	110	1480	21381 ~ 30186	9068 ~ 7822
14D	220	1490	30040 ~ 42409	11464 ~ 9878
	75	990	19888 ~ 28078	4917 ~ 4249
16D	400	1490	57150 ~ 63305	13808 ~ 13035
	110	990	29687 ~ 41912	6456 ~ 5575
17D	500	1490	61200 ~ 75900	16356 ~ 14715
	160	990	40500 ~ 50300	7169 ~ 6450
18D	630	1490	72600 ~ 90100	18336 ~ 16497
	200	990	48100 ~ 59700	8037 ~ 7231



Motor directly driven type



Driven type with coupling

9-14 High pressure centrifugal fan

9-14(A) type is suitable for furnace and coercive ventilation, and is widely used to transport air as well as materials. The air transferred shall not contain any corrosive, not spontaneous combustion and adhesive material, dust and grain and the concentration shall not exceed 150mg/m<sup>3</sup>, with the temperature no higher than 80 °C.

Model(No.)	Power(W)	Rotation(r/min)	Volume(m <sup>3</sup> /h)	Pressure(Pa)
6.3A	7.5	2900	1183~2100	7867~8233
	11	2930	2167~3667	8213~7533
	15	2930	3734~5500	7467~4767



# High pressure fan

## 9-26 High pressure centrifugal fan

This series are use for coercive ventilation in industries such as Ancient furnace, glass, electroplating, ceramics, etc, and are widely used for material transportation in processing industries like food, Feed and slag. The transporting medium is air or other non-spontaneous combustion and non-explosive-combustion air with no harm to human. The air transferred shall not contain any adhesive material, dust and grain and the concentration shall not exceed 150mg/m<sup>3</sup>, with the temperature no higher than 80 °C.

Model(No.)	Power(W)	Rotation(r/min)	Volume(m <sup>3</sup> /h)	Pressure(Pa)
3.5A	3	2900	1473 ~ 2154	2950 ~ 2608
4A	5.5	2900	2198 ~ 3215	3852 ~ 3407
	7.5	2900	3000 ~ 5000	2835 ~ 1060
4.5A	7.5	2900	3130 ~ 3685	4910 ~ 4776
	11	2930	3963 ~ 4792	4661 ~ 4256
5A	15	2930	4293 ~ 6349	6035 ~ 5381
	18.5	2930	6762	5180
5.6A	22	2930	6032 ~ 7185	7610 ~ 7400
	30	2950	7766 ~ 9500	7218 ~ 6527
6.3A	45	2970	8588 ~ 11883	9698 ~ 8915
	55	2970	12699 ~ 13525	8636 ~ 8310
7.1D	75	2970	12292 ~ 14643	12427 ~ 12078
	110	2980	15826 ~ 19360	11776 ~ 10635
8D	132	2980	17584 ~ 20947	15955 ~ 15504
	200	2980	22640 ~ 27696	15112 ~ 13634
	30	1470	13001 ~ 13848	3421 ~ 3294
	18.5	1450	8792 ~ 13166	3834 ~ 3529
9D	45	1480	16118 ~ 19717	4620 ~ 4181
	30	1470	12518 ~ 14913	4869 ~ 4736
10D	75	1480	23612 ~ 30052	5761 ~ 5065
	55	1480	17172 ~ 21465	6143 ~ 5920
11.2D	132	1490	39205 ~ 42221	6691 ~ 6382
	110	1480	24126 ~ 36189	7747 ~ 7009
	37	980	23959 ~ 27953	3031 ~ 2763
	30	980	15973 ~ 21963	3346 ~ 3140
12.5D	250	1490	46117 ~ 58695	9103 ~ 7993
	160	1490	33540 ~ 41925	9713 ~ 9356
	75	990	33309 ~ 38860	3785 ~ 3450
14D	45	980	22206 ~ 30533	4179 ~ 3921
	75	990	31197 ~ 35097	5262 ~ 5188
16D	250	1490	47121 ~ 53011	12285 ~ 12109
	500	1490	70339 ~ 79131	16250 ~ 16014
	220	990	75675 ~ 81496	5971 ~ 5696



9-26(A式)  
Motor directly driven type

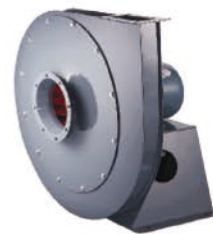


9-26(D式)  
Driven type with coupling

## XQ High pressure centrifugal fan

XQ I/II type is the professional fans designed for coercive ventilation in cement industry. The product is widely used to transport materials and gases with the quantity of dust and solid impurities ≤150mg/m<sup>3</sup> and the temperature no higher than 80 °C.

Model(No.)	Power(W)	Rotation(r/min)	Volume(m <sup>3</sup> /h)	Pressure(Pa)
XQ I-4.5A	3	2900	372~1314	4722~4990
XQ I-5.4A	4	2900	334~1125	6363~6422
XQ II-4.7A	5.5	2900	503~1907	4987~5405



## 9-12 High pressure centrifugal fan

9-12(A) type is the professional fans designed for cupola furnace and carton machine. The air transferred shall not contain any corrosive, not spontaneous combustion and adhesive material, dust and grain and the concentration shall not exceed 150mg/m<sup>3</sup>, with the temperature no higher than 80 °C.

Model(No.)	Power(W)	Rotation(r/min)	Volume(m <sup>3</sup> /h)	Pressure(Pa)
5A	5.5	2900	1000~2680	4800~3239
	7.5	2900	2700~3400	3100~2065
6.3A	7.5	2900	1000~1875	8000~8300
	11	2930	1925~2750	8280~7850
6.8A	15	2930	2800~4000	7830~6100
	15	2930	1667~3600	9880~9420
	18.5	2930	3667~4567	9350~8400
	22	2930	4600~5500	8350~6760
7.1A	15	2930	1201~2978	10515~10821
	18.5	2930	3566~4148	10570~10103
7.7A	30	2950	4818~6344	9490~6933
	18.5	2930	1532~2983	123567~12953
	37	2950	3798~6697	12727~10520
	45	2970	7314~8092	9632~8154

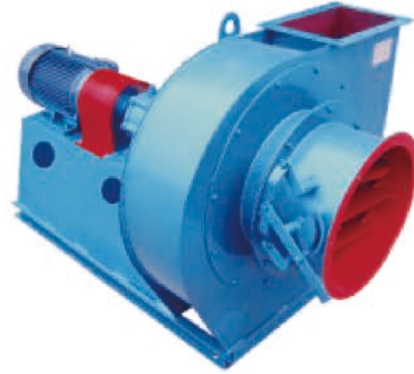


## Y9-35 boiler centrifugal fan (D type)

High pressure fan

It is suitable for making up the fanning and blowing system of the steam boiler beneath 2-240t/h. the highest temperature of air shall not exceed 250°C. before installation ,the fan must equip with the dust-removal fixture whose dust removing efficiency shall not beneath 85%. Our company can provide the stainless steel heat boiler centrifugal blower, when the temperature of air must exceed 250°C.

Model(No.)	Power(W)	Rotation(R/Min)	Volume(m³/h)	Pressure (Pa)
8D	7.5	960	5810-8720	921-1000
	11	960	10180-16000	1010-961
10D	15	970	14200-17050	1510-1559
	18.5	970	19900	1588
	22	970	22750	1598
	30	980	25600-31250	1598-1500
	7.5	720	10800-13000	872-902
	11	730	15150-19450	921
	15	730	21600-23800	912-872
12D	55	980	39230-44140	2294
	75	990	49040-53940	2255-2167
	22	730	26110-29840	1323
	30	730	33570-37300	1323-1304
	37	740	41030	1245
13.5D	75	990	41880-48860	2834-2893
	110	990	62820-76780	2912-2736
15.5D	75	740	48240-64320	2167-2216
	110	740	72360-88440	2216-2088
18D	90	590	70140-80160	1873-1892
	110	590	90180-10020	1892-1853



## Y5-47 boiler centrifugal fan

Composed of C driven type and D driven type, it is designed to fit the equipment of 0.2~20t/h industries boiler and civil boiler of which equipped with the dust-removal fixture and its dust and grain concentration shall not exceed 150mg/m³, the temperature of air must be above 165°C and below 250°C. Our company can provide the stainless steel heat boiler centrifugal blower, when the temp

Series	Model(No.)	Power(W)	Rotation(R/Min)	Volume(m³/h)	Pressure (Pa)
Y5947 (C type) boiler centrifugal fan	3.15C	1.5	3250	1323 ~ 2496	1049 ~ 716
		1.5	2990	1218 ~ 2297	883 ~ 608
		1.5	2750	1120 ~ 2112	745 ~ 520
	4C	4	3300	2751 ~ 5190	1922 ~ 1393
		3	2900	2417 ~ 4561	1481 ~ 1079
	5C	7.5	2900	4723 ~ 8909	2324 ~ 1687
		5.5	2620	4267 ~ 8048	1893 ~ 1373
	6C	18.5	2850	8020 ~ 15129	3364 ~ 2452
		15	2620	7372 ~ 13908	2844 ~ 2069
	7C	30	2850	11529 ~ 21747	3756 ~ 2746
		22	2320	10367 ~ 19556	3040 ~ 2206
		18.5	2200	9830 ~ 18545	2736 ~ 1991
	8C	15	2050	9159 ~ 17280	2373 ~ 1716
		30	2020	13474 ~ 25417	3001 ~ 2187
	9C	22	1860	12407 ~ 23404	2550 ~ 1853
		45	1900	18045 ~ 34039	3364 ~ 2452
		37	1800	17095 ~ 32247	3020 ~ 2197

Series	Model(No.)	Power(W)	Rotation(R/Min)	Volume(m³/h)	Pressure (Pa)
Y5-47(D type) boiler centrifugal fan	4D	3	2900	2393 ~ 4514	1451 ~ 1059
	5D	7.5	2900	4723 ~ 8909	2324 ~ 1687
	6D	18.5	2930	8245 ~ 13492	3550 ~ 3168
	6D	22	2930	14523 ~ 15553	2903V2589
	10D	37	1480	19281 ~ 31551	2697 ~ 2246
	11D	55	1480	25663 ~ 48410	3050 ~ 2216
	12D	90	1480	54520 ~ 62850	3236 ~ 2638
	12.4D	110	1480	36762 ~ 69347	3874 ~ 2824



Profile

Certificate

Facilities

Product

Summary

Projects

## Y4-73 Type D boiler centrifugal fan

It is suitable for making up the fanning and blowing system of the steam boiler for the fire power station beneath 2-670t/h. the media which the fan transferred is smoke and air, whose highest temperature shall not exceed 250 ℃. before installation, the fan must equip with the dust-removal fixture whose dust removing efficiency shall not beneath 85%.

Model(No.)	Power(W)	Rotation(r/min)	Volume(m³/h)	Pressure(Pa)
8D	15	1450	20442 ~ 30993	1284 ~ 868
9D	30	1470	35052 ~ 44128	1511 ~ 481
	7.5	960	15229 ~ 29219	721 ~ 481
10D	45	1480	48083 ~ 60533	1867 ~ 1359
	11	960	20891 ~ 40077	891 ~ 594
	5.5	720	15886 ~ 30475	515 ~ 343
11D	75	1480	53142 ~ 80570	2437 ~ 1646
	18.5	970	27806 ~ 53343	1079 ~ 719
	11	730	32220 ~ 40562	570 ~ 415
12D	110	1480	76040 ~ 104600	2829 ~ 1961
	30	980	36100 ~ 69253	1285 ~ 856
	15	730	28282 ~ 52661	712 ~ 495
14D	220	1490	120740 ~ 166100	3864 ~ 2676
	75	990	79944 ~ 109970	1681 ~ 1167
	30	730	43591 ~ 83624	1010 ~ 674
16D	132	990	130390 ~ 164150	2097 ~ 1526
	55	740	82333 ~ 124820	1302 ~ 880
	45	590	51699 ~ 99178	833 ~ 555
18D	220	990	185650 ~ 233730	2659 ~ 1934
	110	740	141170 ~ 177730	1532 ~ 1115
	55	590	112160 ~ 141210	965 ~ 703
20D	355	990	167130 ~ 320610	3598 ~ 2392
	160	740	160800 ~ 243800	2039 ~ 1378
	90	590	153860 ~ 193700	1192 ~ 868



## Y6-30 Boiler centrifugal induced draft fan

for boiler using, featured by high efficiency and low noise, the fan is used for ventilation system to transport air without corrosive and adhesive materials. The temperature of the media shall not exceed 250 ℃ .

Model(No.)	Power(W)	Rotation(R/Min)	Volume(m³/h)	Pressure (Pa)
3.5C	0.75	2350	655 ~ 1192	853 ~ 727
6.5C	5.5	2150	4263 ~ 4945	2206 ~ 2020
7.5C	7.5	1900	5216 ~ 6600	2598 ~ 2500
	11	1900	7349 ~ 8771	2392 ~ 2196
8.6C	18.5	1850	9494 ~ 14000	3226 ~ 3040



## Y5-48 Type C boiler centrifugal fan

It is designed to fit the equipment of 1~20t/h industries boiler and civil boiler of which equipped with the dust-removal fixture. Before installation, the fan must equip with the dust-removal fixture whose dust removing efficiency shall not beneath 85%. The temperature of air must be below 250 C. Our company can provide the stainless steel heat boiler centrifugai blower, when the temperature of air must exceed 250 C.

Model(No.)	Power(W)	Rotation(r/min)	Volume(m³/h)	Pressure(Pa)
4C	5.5	3550	2932 ~ 5564	2221 ~ 1501
	4	3150	2602 ~ 4937	1746 ~ 1180
	3	2800	2313 ~ 4388	1377 ~ 932
	2.2	2500	2065 ~ 3918	1097 ~ 742
5C	11	3150	5304 ~ 9851	2819 ~ 1913
	7.5	2800	4715 ~ 8757	2223 ~ 1509
	5.5	2500	4210 ~ 7818	1769 ~ 1202
	4	2240	3772 ~ 7005	1419 ~ 9645
6.3C	22	2800	9432 ~ 17516	3545 ~ 2403
	15	2500	8421 ~ 15639	2819 ~ 1913
	11	2240	7546 ~ 14013	2259 ~ 1533
	7.5	2000	6737 ~ 12511	1798 ~ 1221
8C	30	2000	13794 ~ 25619	3323 ~ 2253
	22	1800	12415 ~ 23057	2686 ~ 1823
	15	1600	11035 ~ 20495	2118 ~ 1438
	11	1400	9656 ~ 17933	1619 ~ 1100
10C	75	1800	22250 ~ 44634	4483 ~ 2958
	55	1600	19778 ~ 39674	3531 ~ 2332
	37	1400	17305 ~ 34715	2696 ~ 1782
	22	1250	15451 ~ 30995	2145 ~ 1419
12.5C	110	1400	33800 ~ 67803	4234 ~ 2794
	75	1250	30179 ~ 60538	3365 ~ 2223
	55	1120	27040 ~ 54242	2696 ~ 1782
	37	1000	24143 ~ 48431	2145 ~ 1419



## DZ High pressure centrifugal fan

DZ is suitable for carton machine and coercive ventilation, and is widely used to transport air as well as materials. The air transferred shall not contain any corrosive, not spontaneous combustion and adhesive material, dust and grain and the concentration shall not exceed 150mg/m³, with the temperature no higher than 80 C.

Model(No.)	Power(W)	Rotation(r/min)	Volume(m³/h)	Pressure(Pa)
3.6A	3	2900	1217~3000	2625~1946
4.5A	5.5	2900	1577~3000	4279~3600



## Y8-39D boiler centrifugal induced draft fan (D type)

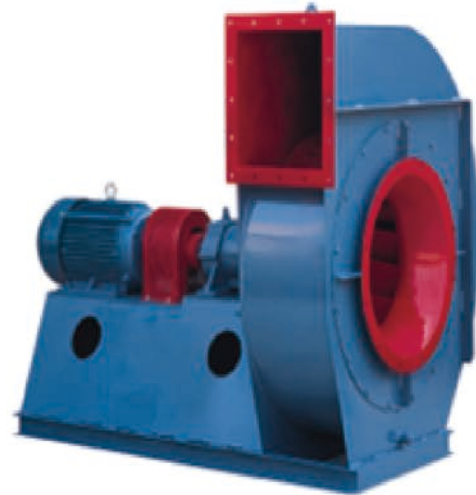
It is suitable for making up the fanning and blowing system of the industries boiler beneath 0.5-35t/h. the highest temperature of air shall not exceed 250℃. before installation, the fan muse equip with the dust-removal fixture whose dust removing efficiency shall not beneath 85%. Our company can provide the stainless steel heat boiler centrifugal blower, when the temperature of air must exceed 250℃.

Model(No.)	Power(W)	Rotation(R/Min)	Volume(m³/h)	Pressure (Pa)
4D	4	2900	3242 ~ 3846	2039 ~ 2049
	5.5	2900	4451 ~ 5660	2030 ~ 1882
4.5D	7.5	2900	4613 ~ 5477	2579 ~ 2589
	11	2930	6338 ~ 8059	2569 ~ 2392
5D	11	2930	6332	3187
	15	2930	7513 ~ 8693	3197 ~ 3167
	18.5	2930	9874 ~ 11055	3079 ~ 2951
5.6D	18.5	2930	8896	4001
	22	2930	10555	4011
	30	2950	12214 ~ 15531	3971 ~ 3707
6.3D	5.5	1450	6333 ~ 8695	1265 ~ 1255
	7.5	1450	9876 ~ 11057	1216 ~ 1167
	37	2950	12667 ~ 15029	5060 ~ 5080
	55	2970	17391 ~ 22114	5031 ~ 4687
7.1D	11	1450	9066 ~ 14136	1647 ~ 1608
	15	1450	15827 ~ 19207	1539 ~ 1333
8D	18.5	1450	12969 ~ 17805	2088 ~ 2098
	22	1450	20223 ~ 22641	2039 ~ 1951
	30	1470	25059 ~ 27477	1833 ~ 1696
9D	30	1470	18456 ~ 21908	2647 ~ 2716
	37	1480	25351 ~ 28794	2657 ~ 2579
	45	1480	32237 ~ 39122	2471 ~ 2147
10D	55	1480	25330 ~ 34775	3265 ~ 3422
	75	1480	39498 ~ 44221	3344 ~ 3246
11.2D	90	1480	48943 ~ 53666	3180 ~ 2922
	90	1480	35587 ~ 42222	4099 ~ 4275
	110	1480	48857 ~ 55492	4295 ~ 4197
	132	1490	62127 ~ 68762	4070 ~ 3903
	160	1490	75397	3667
12.5D	30	980	23561 ~ 32346	1794 ~ 1882
	37	980	36739 ~ 41132	1833 ~ 1784
	45	980	45525 ~ 49918	1706 ~ 1608
	132	1490	49473	5109
	160	1490	58697	5325
	200	1490	67921 ~ 77145	5344 ~ 5227
	250	1490	86369 ~ 104816	5070 ~ 4570
	45	980	32754 ~ 38861	2235 ~ 2334
14D	55	980	44968 ~ 51075	2343 ~ 2285
	75	980	57182 ~ 69385	2226 ~ 2000
	22	730	24907 ~ 34194	1294 ~ 1353
	30	730	38838 ~ 52769	1323 ~ 1157
	75	990	46018 ~ 54597	2804 ~ 2932
	90	990	63177	2942
	110	990	71757 ~ 80336	2873 ~ 2785
16D	132	990	88916 ~ 97496	2667 ~ 2510
	37	740	34993 ~ 48041	1618 ~ 1706
	45	740	54565	1657
	55	740	61089 ~ 74137	1608 ~ 1451
	160	990	68692 ~ 81498	3668 ~ 3825
	200	990	94305 ~ 107113	3844 ~ 3756
16D	250	990	119919 ~ 145533	3638 ~ 3285
	55	740	52234	2118
	75	740	61973 ~ 71711	2206 ~ 2216
	90	740	81450	2167
	110	740	91189 ~ 110666	2108 ~ 1892



It is designed to fit the equipment of 0.5~35t/h industries boiler which equipped with preheated and dust-removal fixture, suitable for the industrial boiler with the similar suction condition and the compatible performance. But the temperature of air must be below 250°C. Before installation, the fan must equip with the dust-removal fixture whose dust removing efficiency shall not be below 85%. With access to lower the amount of dust in the flue gas, the fan will reduce environmental pollution. Moreover, it can reduce wear so as to enhance the service life of the fan.

Model(No.)	Power(W)	Rotation(r/min)	Volume(m³/h)	Pressure(Pa)
4D	5.5	2900	3297 ~ 4396	2275 ~ 2334
	7.5	2900	4945 ~ 5495	2294 ~ 2226
4.5D	11	2900	4694 ~ 7824	2873 ~ 2814
5D	15	2900	6439 ~ 7513	3550 ~ 3648
	18.5	2900	8586 ~ 10733	3658 ~ 3481
5.6D	30	2900	9047 ~ 12063	4452 ~ 4579
	37	2900	13571 ~ 15079	4551 ~ 4364
6.3D	5.5	1450	6441 ~ 7514	1402 ~ 1441
	7.5	1450	8588 ~ 10735	1451 ~ 1372
	45	2900	12882 ~ 15029	5639 ~ 5786
	55	2900	17176 ~ 19323	5805 ~ 5707
	75	2900	21470	5521
7.1D	11	1450	9219 ~ 12292	1784 ~ 1876
	15	1450	13829 ~ 16902	1863 ~ 1794
	18.5	1450	18439	1735
8D	22	1450	13189 ~ 19783	2275 ~ 2363
	30	1450	21982 ~ 26378	2334 ~ 2206
9D	37	1450	18778 ~ 25038	2873 ~ 3010
	55	1450	28168 ~ 37557	2991 ~ 2785
10D	55	1450	25760 ~ 30053	3550 ~ 3687
	75	1450	34346 ~ 42933	3716 ~ 3648
	90	1450	47226 ~ 51519	3569 ~ 3442
11.2D	110	1450	36190 ~ 48254	4462 ~ 4658
	132	1450	54285 ~ 60317	4462 ~ 4570
	160	1450	66349 ~ 72381	4471 ~ 4324
	30	960	23960 ~ 31947	1951 ~ 2039
	45	960	35941 ~ 47921	2030 ~ 1892
12.5D	160	1450	50312 ~ 58697	5560 ~ 5766
	200	1450	67082	5805
	250	1450	75468 ~ 83853	5766 ~ 5697
	315	1450	92238 ~ 100624	5580 ~ 5384
	55	960	33310 ~ 44413	2432 ~ 2540
	75	960	49965 ~ 61068	2530 ~ 2441
	90	960	66620	2353
14D	22	730	25330 ~ 29550	1402 ~ 1461
	30	730	33772 ~ 42215	1471 ~ 1441
	37	730	46437 ~ 50659	1412 ~ 1363
	75	960	46798	3049
	90	960	54597	3167
	110	960	62397 ~ 70197	3187 ~ 3167
	132	960	77997 ~ 85796	3128 ~ 3059
	160	960	93596	2961
	37	730	35586 ~ 41517	1765 ~ 1833
16D	45	730	47448 ~ 53379	1843 ~ 1833
	55	730	59310	1814
	75	730	65241 ~ 71172	1775 ~ 1716
	160	960	69856 ~ 81498	3991 ~ 4138
	200	960	93141	4176
	250	960	104784 ~ 128069	4138 ~ 4001
	280	960	139712	3863
	75	730	53119 ~ 61973	2304 ~ 2392
	90	730	70826 ~ 79679	2402 ~ 2392
	110	730	88533 ~ 97386	2363 ~ 2314
132	730	106239	2235	



Y9-38

# High pressure fan

## C6-46 Centrifugal fan for extraction dust

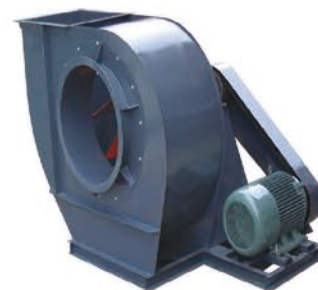
It is suitable to expel air with dirt, wood scraps and fine fiber, it can also be used for ventilation with the temperature of air below 80C. Made of 6 forward curved blades, the fan is not easy to wear and amass dirt. This series consist of A drive type, C drive type as well as D drive type

Series	Model(No.)	Power(W)	Rotation(r/min)	Volume(m³/h)	Pressure(Pa)
C6-46(A式) Motor directly driven type	3A	3	2900	1183 ~ 2891	1452 ~ 1205
	4A	2.2	1420	1404 ~ 3420	676 ~ 568
	5A	5.5	1450	2733 ~ 6660	1117 ~ 931
	6A	7.5	1450	4725 ~ 11552	1607 ~ 1343
	6A	3	960	3130 ~ 7045	706 ~ 598

Series	Model(No.)	Power(W)	Rotation(r/min)	Volume(m³/h)	Pressure(Pa)
Belt driven type	4C	5.5	2320	2240 ~ 5460	1735 ~ 1441
		4	2030	1962 ~ 4790	1333 ~ 1107
		3	1810	1747 ~ 4260	1058 ~ 882
		2.2	1665	1608 ~ 3918	892 ~ 745
		1.5	1520	1468 ~ 3582	745 ~ 617
		1.1	1305	1260 ~ 3080	549 ~ 461
	5C	7.5	1740	3280 ~ 8005	1627 ~ 1333
		5.5	1620	3054 ~ 7450	1401 ~ 1156
		4	1390	2620 ~ 6400	1029 ~ 853
		3	1275	2404 ~ 5840	862 ~ 715
		2.2	1160	2183 ~ 5340	715 ~ 598
		2.2	1004	4378 ~ 4781	510 ~ 480
	6C	1.5	1004	1960 ~ 3975	579 ~ 529
		0.5	1350	8022 ~ 10740	1343 ~ 1156
		5.5	1350	4398 ~ 7116	1400 ~ 1372
		7.5	1255	9120 ~ 9920	1068 ~ 1000
		5.5	1255	4080 ~ 8282	1205 ~ 1117
		5.5	1160	6988 ~ 9219	990 ~ 853
		4	1160	3780 ~ 6111	1029 ~ 1020
		4	1060	6294 ~ 8427	823 ~ 715
		3	1060	3450 ~ 5583	862 ~ 853
		3	965	5729 ~ 7670	686 ~ 588
		2.2	965	3141 ~ 5082	715 ~ 705
		2.2	870	2836 ~ 6910	579 ~ 480



A式

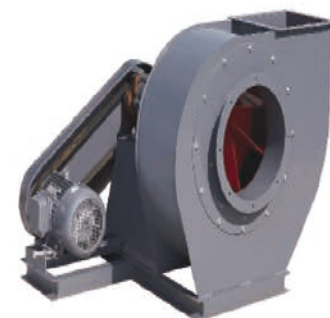


C式

## C6-48 Centrifugal fan for extraction dust (C type)

It is suitable to expel air with dirt, wood scraps and fine fiber. It can also be used for ventilation with the temperature of air below 80 C. There are A motor directly driven type, C belt driven type and D drive type with coupling, users can choose from different driven types according to their needs.

Model(No.)	Power(W)	Rotation(r/min)	Volume(m³/h)	Pressure(Pa)
3.15C	3	3150	3017~3323	1507~1376
	2.2	3150	1487~2711	1880~1615
	2.2	2800	2410~2954	1274~1086
	1.5	2800	1322~2138	1483~1344
	1.5	2500	2152~2637	1015~865
	1.1	2500	1180~1909	1181~1070
	1.1	2240	1057~2363	948~694
	0.75	2000	944~2110	755~553
	0.75	1800	850~1899	611~448
4C	0.75	1600	755~1688	483~354
	4	2500	3932~5495	1737~1384
	3	2500	2369~3411	1933~1810
	3	2240	3056~4924	1451~1110
	2.2	2240	2122~2589	1550~11505
	2.2	2000	1895~4396	1234~884
	1.5	1800	1705~6957	999~716
	1.5	1600	3183~3517	624~565
	1.1	1600	1516~2850	789~472
5C	0.75	1400	1326~3077	603~433
	0.75	1250	1184~2748	481~345
	7.5	2000	7883~8623	1521~1381
	5.5	2000	3553~6958	1953~1647
	5.5	1800	7095~7761	1230~1118
	4	1800	3198~6262	1580~1332
	3	1600	2842~6899	147~882
	2.2	1400	2487~6036	954~675
	1.5	1250	2221~4349	760~641
	2.2	1250	4927~5390	592~538
	1.1	1120	1990~3896	610~514
5C	1.5	1120	4415~4829	475~432
	0.75	1000	1776~3035	486~436
	1.1	1000	3479~4312	410~344





**C6-46** centrifugal fan for extraction dust

It is suitable to expel air with dirt, wood scraps and fine fiber, it can also be used for ventilation with the temperature of air below 80C. Made of 6 forward curved blades, the fan is not easy to wear and amass dirt. This series consist of A drive type, C drive type as well as D drive type

Series	Model(No.)	Power(W)	Rotation(R/Min)	Volume(m³/h)	Pressure (Pa)
Belt driven type	8C	18.5	1085	16975~20415	1480~1333
		15	1085	8375~15255	1607~1539
		15	1015	14288~19124	1353~1166
		11	1015	7840~12676	1401~1382
		11	905	12750~17070	1068~922
		7.5	905	6990~11310	1117~1098
		7.5	864	10790~13540	1000~941
		5.5	864	6655~9415	1020
		7.5	796	11230~15040	833~715
		5.5	796	6150~9960	862~853
		5.5	725	7910~13685	715~598
		3	725	5600~6755	715~725
		4	625	9186~12300	559~480
		3	625	5034~8148	579~569
	10C	37	1000	26900~36050	2068~1803
		30	1000	20300~24000	2156~2136
		30	900	21383~24450	1735~460
		22	900	12300~18300	1754~1745
		22	800	21540~28850	1323~1156
		18.5	800	10920~19200	1382~1369
		18.5	710	21000~25000	1000~911
		11	710	9000~19000	1098~1039
		11	630	8610~22700	862~715
		7.5	560	7650~20200	676~569
	12C	55	768	44600~48770	1607~1509
		37	768	32300~40500	1784~1675
		30	768	20000~28220	1823~1813
		37	720	34220~45800	1529~1323
		30	720	18780~30360	1597~1560
		30	670	31830~42600	1323~1147
		22	670	17470~28240	1382~1353
		22	628	23100~30860	1215~1116
		15	628	16340~19725	1215~1225
		22	582	30680~36900	951~862
		15	582	15130~24460	1029~1019
		15	530	25220~33770	833~715
11		530	13820~22370	862~853	
11		483	22950~25540	686~557	
7.5		483	12590~20360	715~705	
7.5		435	18360~23040	559~540	
5.5	435	11340~16020	588~579		



C6-46 (C式)  
Belt drive type

## High pressure fan

### XBF Multi-wings centrifugal fan for extraction smoke

XBF is our application and development of the "LAV"licensing impeller design technology.The multi-airfoil blades have 11-62 series and CF series and have been modified by our super technology and rich experience to solve the problem that the impeller in the kitchen which is hard to clean

Model(No.)	Power(W)	Voltage(V)	Rotation(r/min)	Volume(m <sup>3</sup> /h)	Pressure(Pa)	Static pressure(Pa)	Noise(A)
2.8A	1.1	220/380	1400	1388 ~ 3500	569 ~ 478	569 ~ 478	≤74
3A	2.2	220	1420	2976 ~ 4500	710 ~ 580	710 ~ 580	≤78
	1.5	220/380	1400	2672 ~ 4118	759 ~ 617	759 ~ 617	≤77
	0.75	380	910	1769 ~ 3065	334 ~ 226	334 ~ 226	≤68
3.5A	3	220/380	1450	4187 ~ 5626	1006 ~ 1008	1006 ~ 1008	≤82
	1.1	220/380	910	2769 ~ 3724	442 ~ 443	442 ~ 443	≤74
4A	5.5	380	1450	4941 ~ 8401	1167 ~ 1100	1167 ~ 1100	≤87
	7.5	380	1450	9639 ~ 10492	954 ~ 357	954 ~ 357	≤90
	2.2	380	960	4539 ~ 6947	544 ~ 156	544 ~ 156	≤80
	3	380	960	4250 ~ 8000	500 ~ 275	500 ~ 275	≤78
4.5A	4	380	960	4290 ~ 9528	709 ~ 653	709 ~ 653	≤75
5A	5.5	380	960	7148 ~ 12000	906 ~ 844	906 ~ 844	≤79
	7.5	380	960	2900 ~ 14388	750 ~ 652	750 ~ 652	≤84
6A	11	380	960	12238 ~ 18500	1225 ~ 858	1225 ~ 858	≤79
	5.5	380	720	9178 ~ 14982	639 ~ 389	693 ~ 389	≤73
6.5A	15	380	960	13024 ~ 21500	1488 ~ 850	1488 ~ 850	≤80
	7.5	380	720	9768 ~ 17858	842 ~ 469	842 ~ 469	≤75
7A	11	380	720	13609 ~ 23912	1020 ~ 783	1020 ~ 783	≤75



### JQZ type scrap paper delivered fan

Featured by firm and rational structure,large volume,high pressure,stable performance,the safe and practical fan can solve the problem with collecting and handing paper edge.This product can collect and cut the paper edge to pieces,than transport it by air to dumps so as to improve the operating environment.The transported shall not be corrosive and flammable with a temperature no greater than 80 C , and shredding thickness shall not exceed 350g/m<sup>3</sup>.

Model(No.)	Drive type	Power(W)	Rotation(R/Min)	Volume(m <sup>3</sup> /h)	Pressure (Pa)
4A	A Type	3	2900	821~2487	2669~1467
4.5A	A Type	5.5	2900	1169~3542	3378~1856
5A	A Type	11	2900	1604~4858	4170~2291
5.5A	A Type	18.5	2900	3148~7800	4608~2153
5.7A	A Type	22	2900	3472~9346	4953~2906
6A	A Type	30	2900	5505~11592	6233~3331
6.8C	C Type	15	2130	4477~7202	4204~3514
	C Type	18.5	2130	7942~8675	3258~2997
	C Type	22	2130	8240~10000	3250~2900
	C Type	30	2450	8499~10415	4310~3698
	C Type	37	2500	8672~11680	4487~3850



### 2JZ series at present are out new product researched

2JZ series at present are out new product researched and developed on the basis of a series of high pressure blower at home and abroad. The fans have two-stage impellers. Featured by high pressure, low noise, rational design, nice outlook, and stable operation, the fans are widely used for high pressure blowing in industries such as ancient furnace, glass, electroplating and ceramics, and also for material transportation in some industries like silos, feed, slag processing, etc. the air transferred shall not contain any toxic, corrosive and adhesive material with the temperature of air no greater than 80 C , dust and grain and the concentration shall not exceed 150mg/m<sup>3</sup>.

	Power(W)	Rotation(R/Min)	Volume(m <sup>3</sup> /h)	Pressure (Pa)
	0.9	2800	200 ~ 300	5100 ~ 4650
	2.2	2800	400 ~ 670	6420 ~ 5300
	4	2900	400 ~ 1300	8100 ~ 2550
	5.5	2900	700 ~ 1100	9700 ~ 8080
	7.5	2900	1150 ~ 1600	7650 ~ 3430
	7.5	2900	709 ~ 1300	10119 ~ 9160
	11	2930	1350 ~ 2314	8950 ~ 2247
	11	2930	1030 ~ 1700	11920 ~ 9520
	15	2930	1720 ~ 2519	9440 ~ 949
	15	2930	980 ~ 2000	14570 ~ 10950
	18.5	2930	2070 ~ 2920	10400 ~ 3500



## C6-48 centrifugal fan for extraction dust (C type)

It is suitable to expel air with dirt, wood scraps and fine fiber. It can also be used for ventilation with the temperature of air below 80°C. There are A motor directly driven type, C belt driven type and D drive type with coupling, users can choose from different driven types according to their needs.

Model(No.)	Power(W)	Rotation(R/Min)	Volume(m³/h)	Pressure (Pa)
6.3C	7.5	1600	5686 ~ 8533	1985 ~ 1866
	11	1600	9713 ~ 13799	1782 ~ 1403
	5.5	1400	4975 ~ 8499	1517 ~ 1362
	7.5	1400	9743 ~ 12074	1279 ~ 1073
	4	1250	4442 ~ 7588	1208 ~ 1085
	5.5	1250	8699 ~ 10781	1019 ~ 855
	3	1120	3980 ~ 7794	969 ~ 818
	4	1120	8831 ~ 9660	755 ~ 686
	2.2	1000	3554 ~ 6071	772 ~ 693
	3	1000	6959 ~ 8625	651 ~ 547
	1.5	900	3198 ~ 4631	625 ~ 588
	2.2	900	5464 ~ 7762	561 ~ 443
	1.1	800	2843 ~ 4116	494 ~ 464
	1.5	800	4857 ~ 6900	443 ~ 350
8C	15	1250	9096 ~ 22075	1953 ~ 1381
	11	1120	11799 ~ 19779	1472 ~ 1108
	7.5	1120	8150 ~ 9763	1566 ~ 1526
	7.5	1000	7276 ~ 17660	1247 ~ 882
	5.5	900	6549 ~ 12824	1009 ~ 851
	7.5	900	14530 ~ 15894	786 ~ 714
	3	800	5821 ~ 8429	797 ~ 749
	4	800	9944 ~ 14128	716 ~ 564
	3	710	5166 ~ 12539	627 ~ 444
	2.2	630	4584 ~ 11126	494 ~ 350
	10C	18.5	1000	14804 ~ 22057
22		1000	25610 ~ 36417	1787 ~ 1381
15		900	13323 ~ 23049	1653 ~ 1445
18.5		900	26247 ~ 32776	1349 ~ 1118
11		800	11843 ~ 23331	1297 ~ 1065
15		800	26291 ~ 29134	978 ~ 882
7.5		710	10510 ~ 20706	1026 ~ 838
11		710	23334 ~ 25856	769 ~ 695
5.5		630	9327 ~ 18373	807 ~ 659
7.5		630	20704 ~ 22943	605 ~ 547
4		560	8290 ~ 16331	638 ~ 521
5.5		560	18404 ~ 20393	478 ~ 432
4		500	7402 ~ 18208	508 ~ 344
12.5C		30	800	23131 ~ 34465
	37	800	40017 ~ 56902	1787 ~ 1381
	22	710	20528 ~ 35515	1607 ~ 1405
	30	710	40442 ~ 50501	1311 ~ 1087
	15	630	18215 ~ 31513	1264 ~ 1105
	18.5	630	35885 ~ 44811	1031 ~ 855
	11	560	16191 ~ 28011	997 ~ 873
	15	560	31897 ~ 39832	814 ~ 675
	7.5	500	14457 ~ 25010	795 ~ 695
	11	500	28480 ~ 35564	649 ~ 538

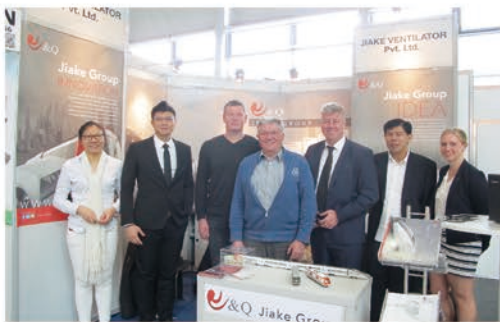


## Events

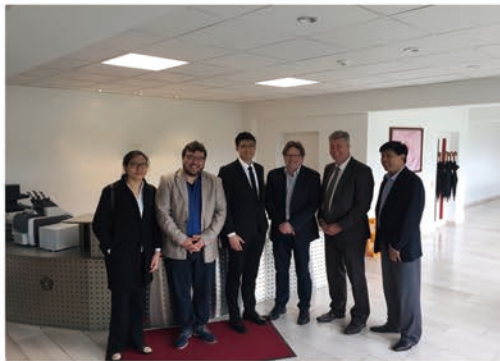
### Company listed in stock market in 2015



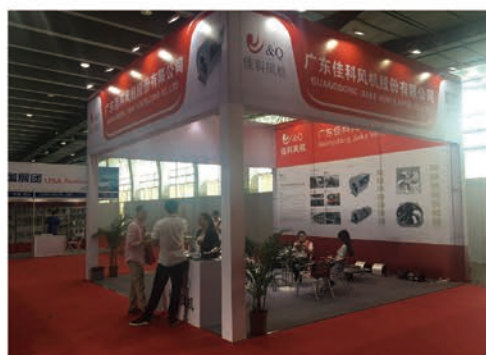
### Join German Exhibition, 2016



### Visit Comanys, 2016



### Promotion Events, 2016



# Partial Projects

Yuyi company	Chongqing Dianjiang Library	Jinke xing chen
Ostrich company	Chongqing Qianjiang Public Service	Jiangjin Jinke Yun Ding Sunshine
Heshan ten miles radius villa	Center Party Office	Hangzhou Construction Bank and Branch
Foshan Hantian Technology City	Zhongshan Nan Lang Jinghua theater	Hangzhou Xiaoshan MIX bar
Foshan MaiGou Company	Chongqing Longxing resettlement housing	Fuzhou Pingtan Island Road roundabout civil
Cangzhou Second Hospital	Hubei Shiyan Accord Hotel	air defense projects
Foshan Agile Bati Island Duplex	Yangxi New Century Hotel	Foshan City Emergency Rescue Command
Apartment	Yangxi Royal Garden Jinghua Park two	Center
Jiangxi Regency Country	Yangjiang Hengda Mingdu	Beijing Lotus Supermarket
Reputation Apartment	Suining Xu Sheng Kee Hotel	Hangzhou Riverside Area
Xiqiao Bibo building clubs	Shenzhen Nanshan International School	Chongqing Dianjiang Guibei community g
Xiqiao Ruilong International Hotel	Hunan Construction Group reconstruction	ardens
Bao Jie Plaza	Founder Changhai Changsha Central Office	Chongqing Yubei Juyi Garden
Folium artemisiae argyi beauty salon	Expansion	Chongqing two routes Air China
Hengda Golden World Hotel	Yangjiang new century	Chongqing Hongta Group Golf
Xingfu Plaza Yangtze Island Silver Hotel	Yangjiang International Trade Center	Sichuan Chengdu qiansheng Store
Dazu Vantage Dynasty Hotel	Jiangjin Jinke Xiangrui City	Chongqing Dianjiang court
Hechuan Vantage Dynasty Hotel	Changshou Jinke World City	Chongqing Dianjiang Country Garden
Jiefangbei Yangze Island Hotel	Shuangbei first Jiajun	Chongqing Dianjiang Mudanjiang City
Leading Temple Tong Hui Hotel	Foreigner blue COCO era	Chongqing Dianjiang Central Mansion
Jiefangbei Thai restaurant	Bristol Township data valley	Chongqing Hechuan Huadi Hotel
Shizhu Tian Yao Hotel	Dragon Bridge world	Sofitel Forebase Chongqing Hotel
New Century Mall	Yangtze River International	Chongqing mountain restaurant
Dianjiang DingFa Hotel	Pearl River Bank of America basement	Chongqing Dianjiang eighth middle school
Tao Ranju Hotel	Yangchun City theater fire control project	Yang West Oasis Garden II
Qinglong Golf	Amway Hunan Branch renovation	Blue Dream Hotel Yangjiang High-tech Zone
Jiefangbei International Trade	East Shore Digital Living Museum	Bank of America Yangjiang Pearl River
Wanzhou Li Kee	Tea house	Garden
Ah Hing restaurant	Super 8 Hotel	Quanzhou Licheng Hotel
Mountain hotel	Quartet Hot Pot Restaurant	Anta sports
Dianjiang Ming Qing Fortune Center	Impression hot pot restaurants	Jordan headquarters in Xiamen
Dianjiang prosperity	Time engine cafes	Quanzhou Prince Hotel
Fuling Heming Garden	Dongan Cafes	Fuzhou 51 Plaza Honor Restaurant
Nine Bin Bafei feast	Pixian County People's Hospital	Xiamen Wanda Plaza
Chongbai Shopping Mall	Chengdu Air Force Guest House	Fuzhou Baolong Plaza Guohui Hotel
Sichuan Wanxing Hotel	Xiamen Xiang Lu International Hotel	Xiantao Data Valley Business Building
Sichuan Changjiang Hotel	Xiamen Kempinski Hotel	Ningbo Lishi Department Store
village base of Chengdu,Sichuan	Ike Xiamen Xinglin Bay Hotel	Guangzhou Panyu Creative Industry Park
village base of Sichuan	Xiamen Dongdu Dongshan Seafood Restaurant	Jiangsu Jinting International Garden
village base of Xi'an	Xiamen Tang banquet central kitchen	Ningbo Veken upper house villa
Jinke Tian Chen	Xiamen 520 Dongshan Seafood Theme Pavilion	Fuzhou Hongshan primary school
Qianjiang Building	Xiamen Tenglong Club food chain	Haikou Jinghua restaurant
Foshan Cyber Park	Foshan Tongxiangli Commercial Building	Huanle Di KTV

## Germany

Add:Karl Kunger str 56,12245 Berlin

Email:Info@jiakegroup.com

## Australia

34 Baroona Road,Northbridge NSW 2063 Australia

Email:lvylin@jiakegroup.com

## Malaysia

11-13-1,Sin Heap Lee Business Centre,Jalan SR Seri Kembangan,Jalan SR 8/1,Taman Serdang Raya,43300 Seri Kembangan,Selangor,Malaysia

Email:Hor@jiakegroup.com

Phone:+60 8941 6122

## China

Marketing Department:

Cyber Park, Guicheng Street, Nanhai District, Foshan City, Guangdong Province

Email:Martin@jiakegroup.com

Phone:+86 18676511918

## Guangdong Jiake Ventilatoe Co.,Ltd

Address:Yingming Industrial Garden,Shatou,Jiujiang  
Town,Nanhai District,Foshan,Guangdong

Telephone:+757 86910345

Fax:+757 86916250

Mailbox:sales@jiakefan.com

Website: www.jiakefan.com

Stock code:833202

Stock name: Jiake group

